



Fulton Cut Transmission Line Clearance Project Overview

March 6, 2025

Project Schedule

Project Phase	What's Happening	When (Estimate)
Design & Engineering	Completing the final design plans	Spring 2025
Mobilization	Moving equipment to the site	Summer 2025
Tower Replacement	Building the new pole foundations	Summer 2026
Power Line Installation	Install new power lines on the newly built structures	December 2026
Project Completion	Remove the old towers, restore the site and complete construction	Summer 2027

Why is this Project Important?

- JEA is partnering with the City of Jacksonville and JAXPORT to raise the transmission lines crossing the St. Johns River to ensure larger container ships can safely access JAXPORT.
- Raising the power lines provides an essential community benefit by upgrading critical JEA infrastructure while supporting the more than 15,000 area jobs created or protected by the growth of international container trade in Jacksonville.
- It's all about modernizing our community's capabilities for future generations to come.

What Are the Benefits?

Economic Growth:

More ships, more jobs and a more resilient supply chain. This keeps JAXPORT – and Jacksonville – thriving.

Improved Infrastructure:

The upgrades strengthen our electric grid, making it more reliable for all JEA customers.

Modern Technology:

Upgrading the electric transmission lines with advanced technology ensures enhanced resiliency and long-term performance.

Construction Activities

What to Expect

Transport of Equipment & Structures:

Large equipment will arrive via barges or helicopter. Construction traffic will be limited to workers, equipment, and material deliveries using designated routes.

Traffic Plan:

Signage will direct construction traffic along safe routes.

Extended Work Periods:

Some phases may require extended hours, including nights/weekends, with prior notice.

Noise & Visual Impact:

Crews will minimize noise, dust, and disruptions, keeping work confined to the project site.

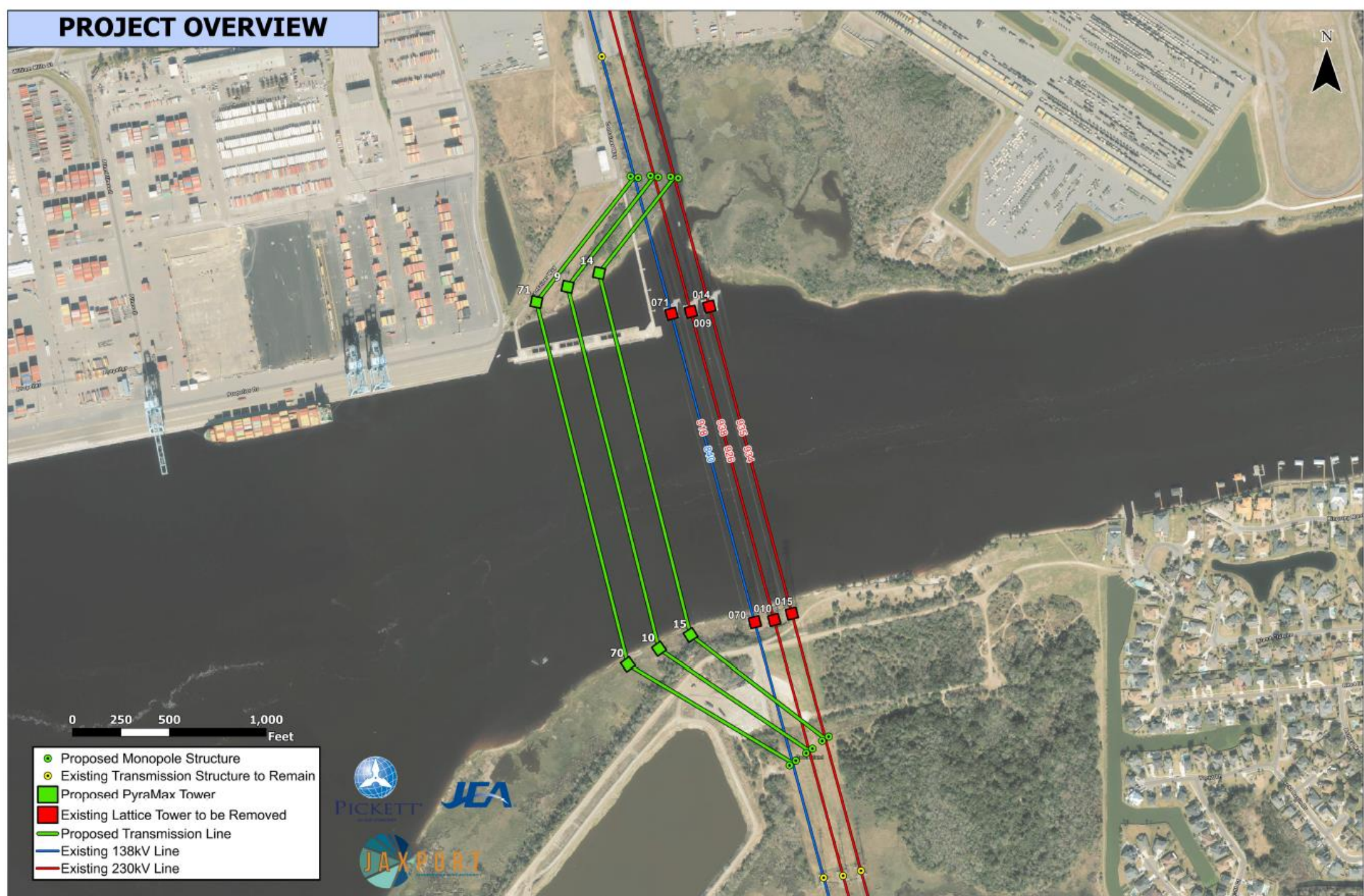
Restoration:

JEA will repair any disturbed areas (landscaping, curbs, sidewalks, etc.) after construction.

Updates:

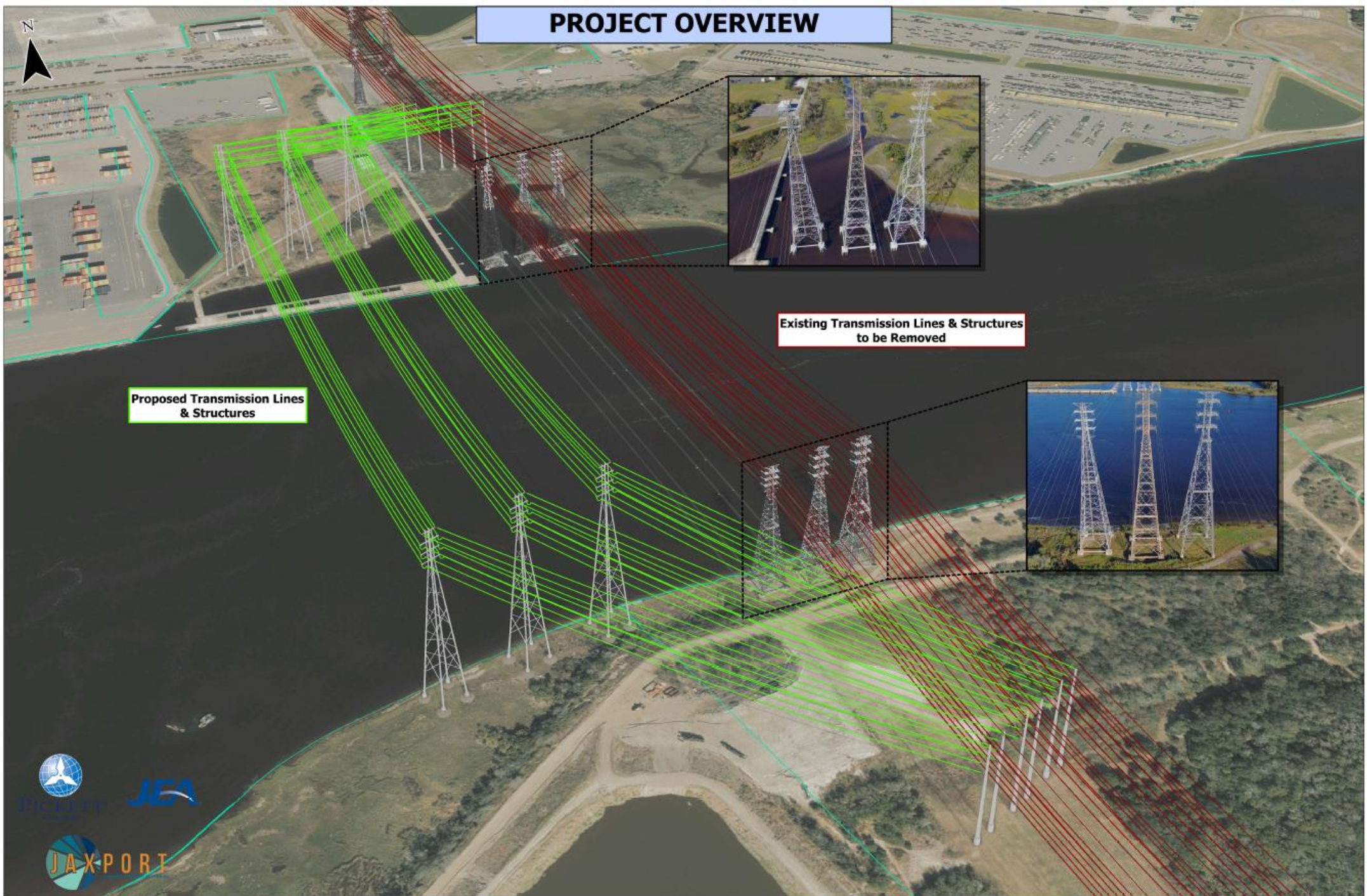
Regular project updates will be provided via flyers, emails, and the project website.

PROJECT OVERVIEW



This product is for informational purposes only and may not have been prepared for legal, engineering, or surveying purposes. It does not represent an on-the-ground survey and represents only the approximate relative location of displayed information.

PROJECT OVERVIEW



Proposed Transmission Lines
& Structures

Existing Transmission Lines & Structures
to be Removed



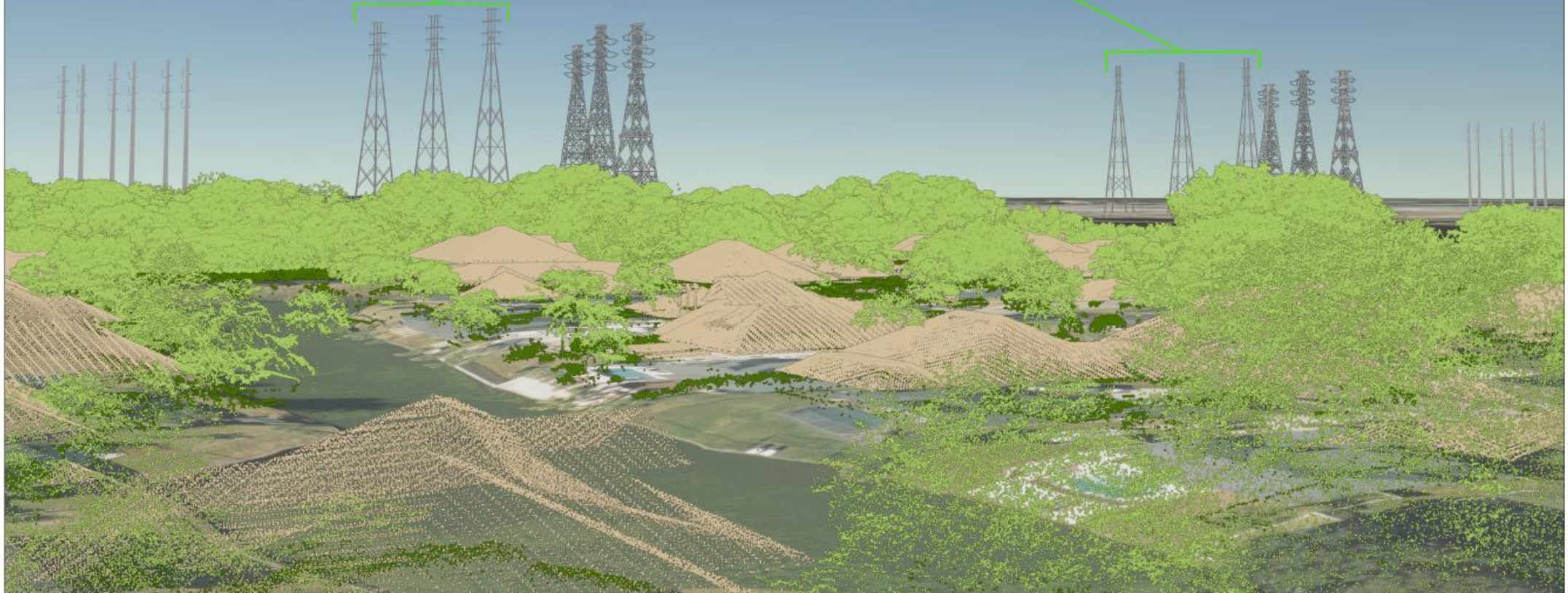
This product is for informational purposes only and may not have been prepared for legal, engineering, or surveying purposes. It does not represent an on-the-ground survey and represents only the approximate relative location of displayed information.



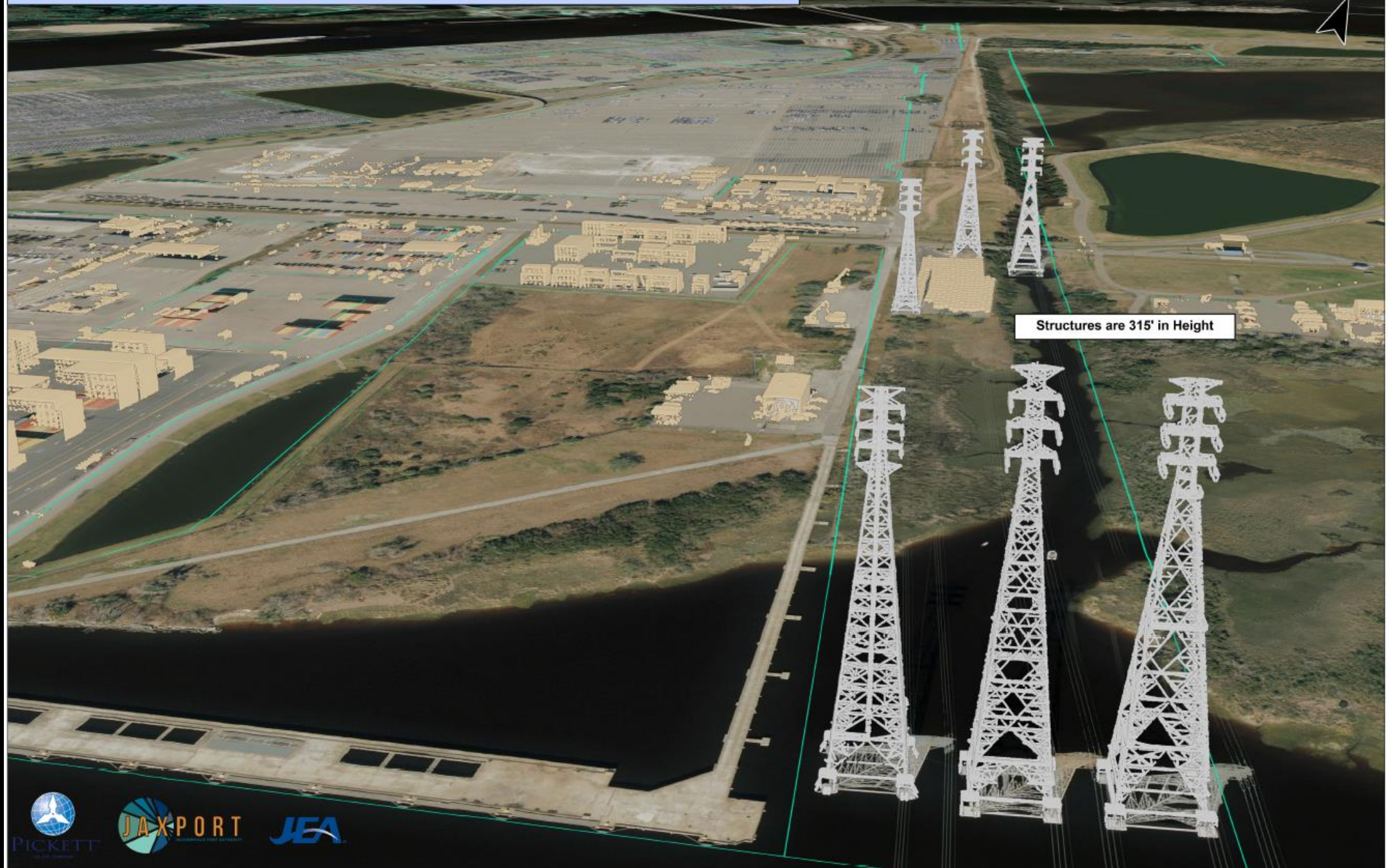
VIEW FROM REED ISLAND RESIDENTIAL



Proposed Transmission Structures
(375' in Height)

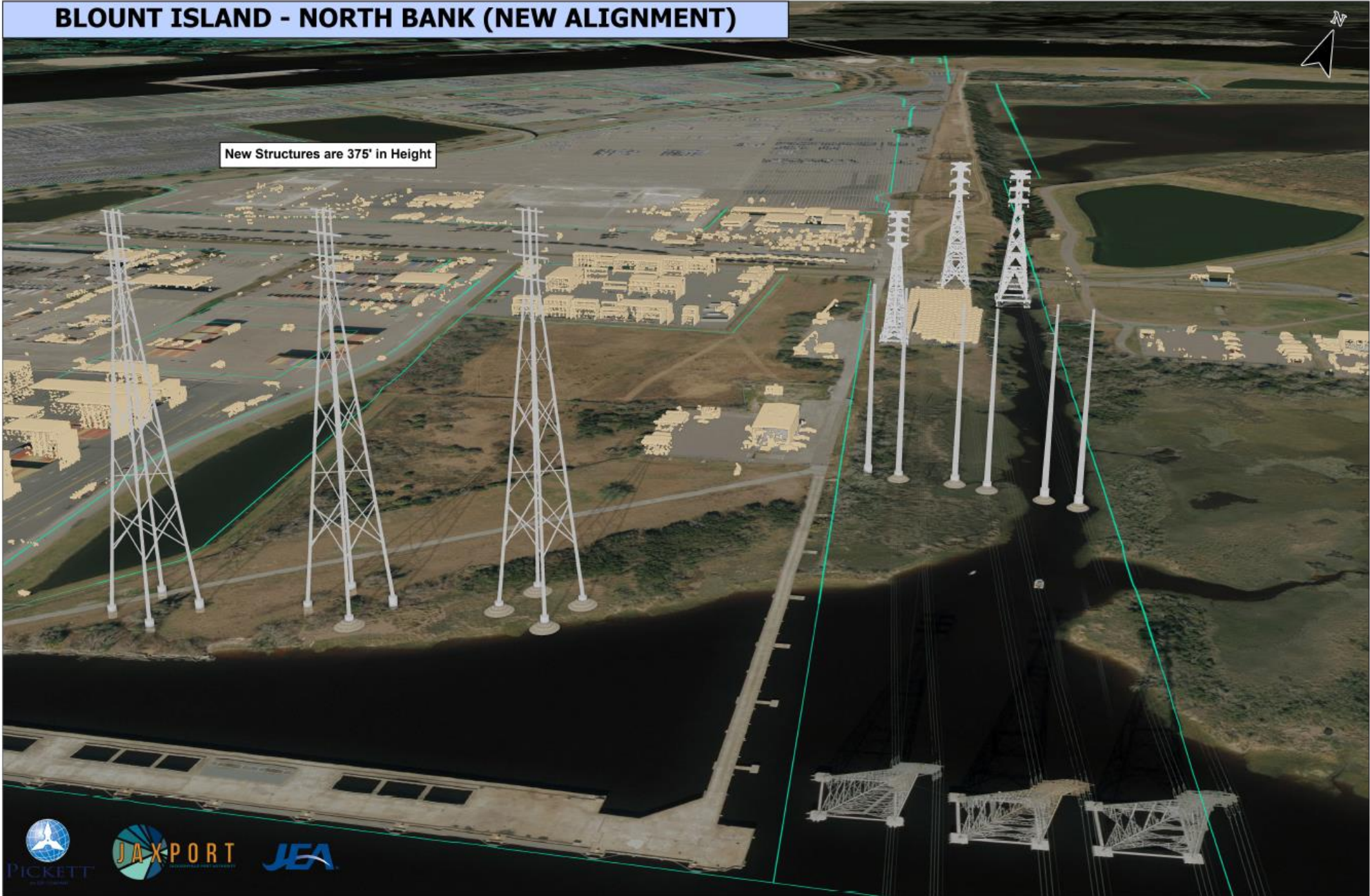


BLOUNT ISLAND - NORTH BANK (CURRENT ALIGNMENT)



BLOUNT ISLAND - NORTH BANK (NEW ALIGNMENT)

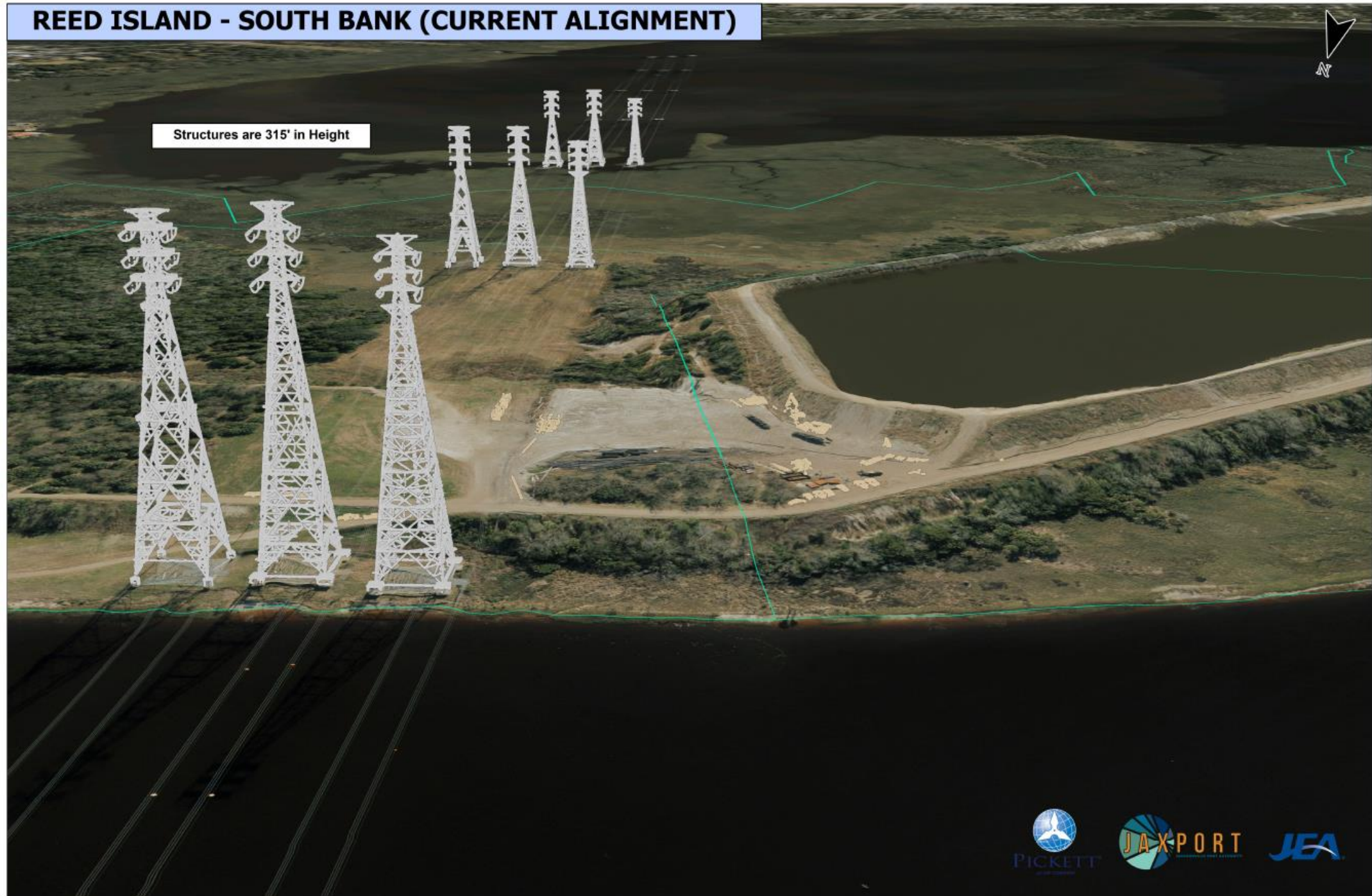
New Structures are 375' in Height



REED ISLAND - SOUTH BANK (CURRENT ALIGNMENT)

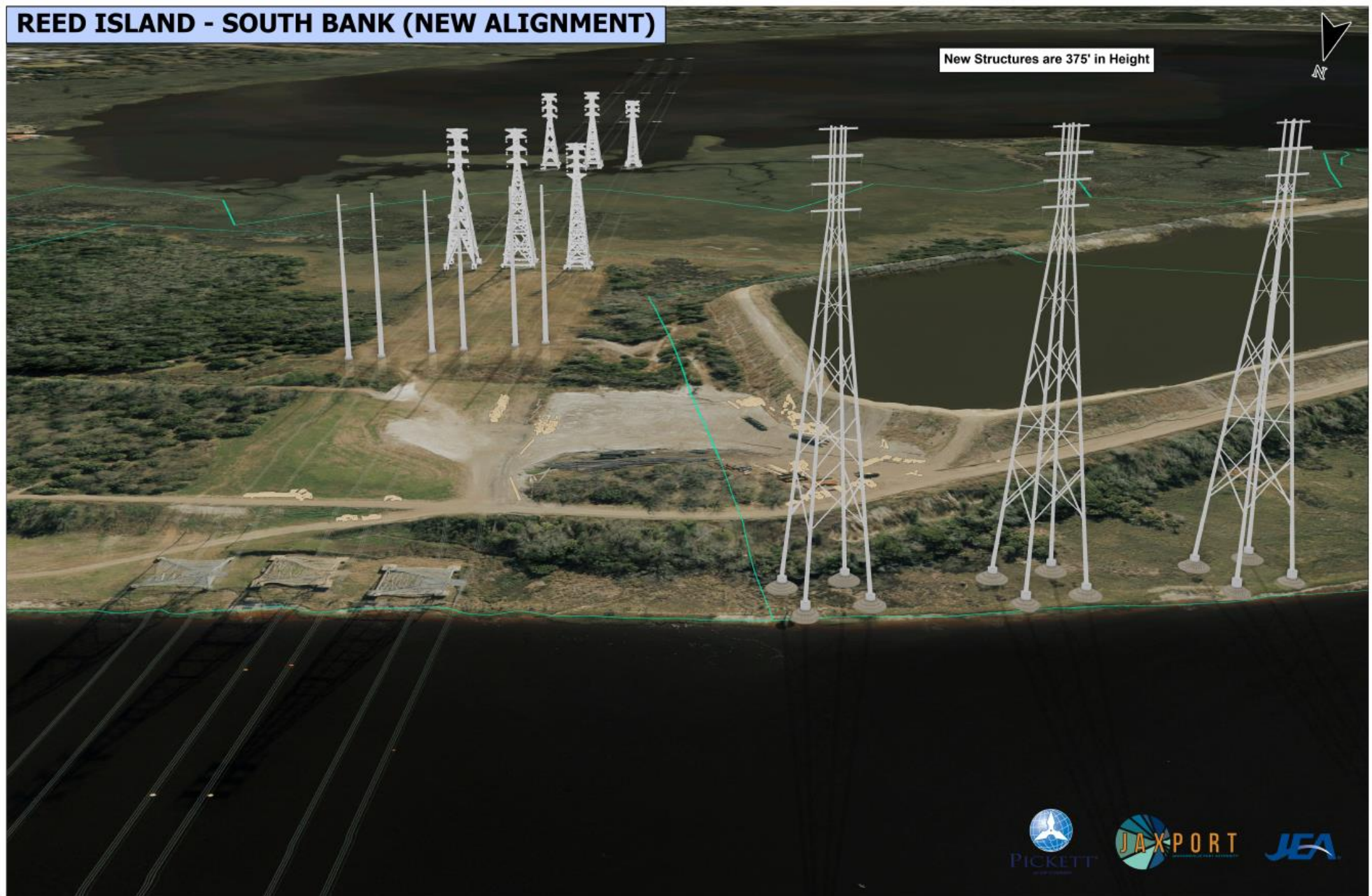


Structures are 315' in Height



REED ISLAND - SOUTH BANK (NEW ALIGNMENT)

New Structures are 375' in Height



View from Reed Island Dr

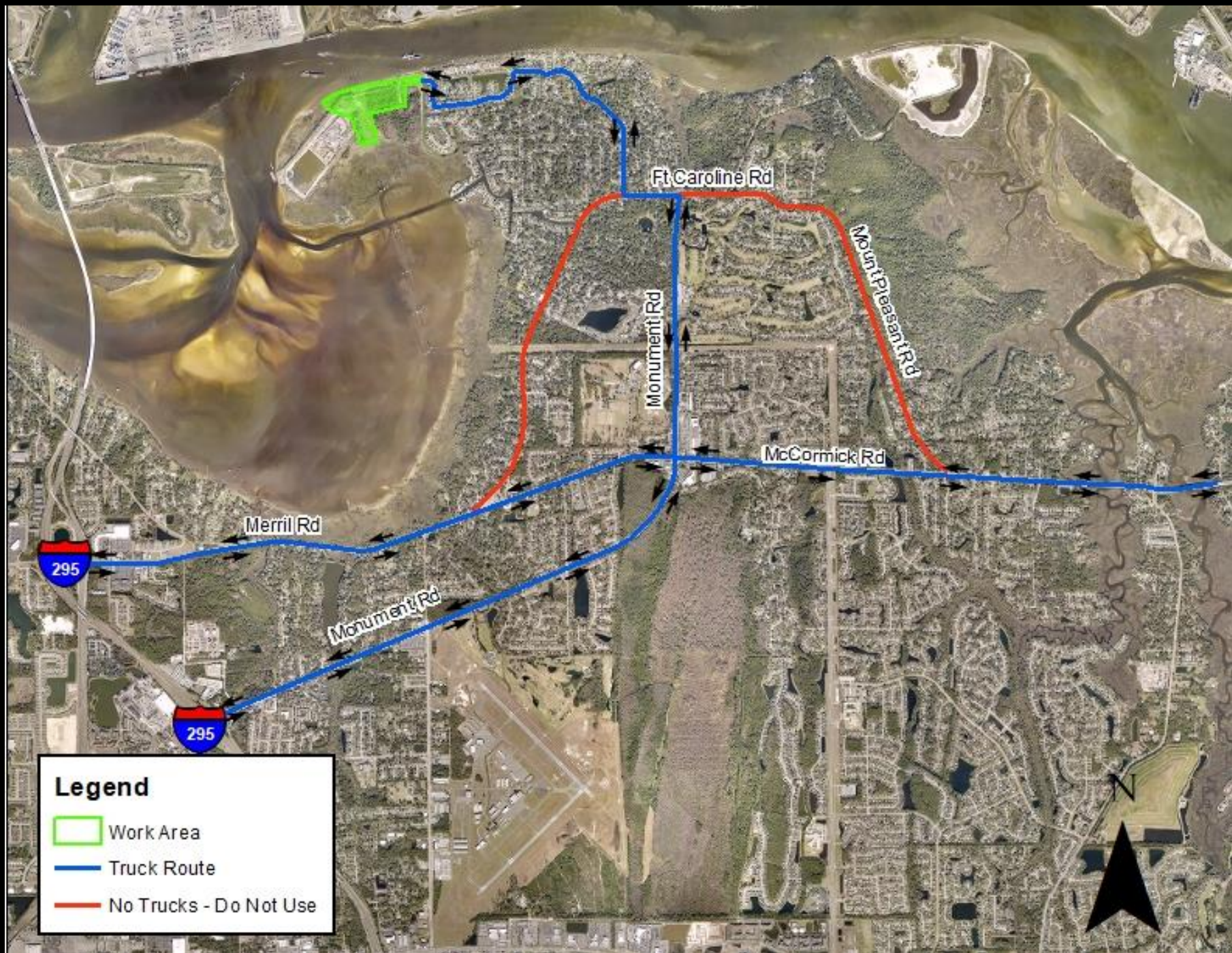


View from Cabana Club



View from Kingsley Manor









MSC SHIRLEY

MSC









Contact Information:

JEA Project Outreach
904-665-7500

Email: projectoutreach@jea.com

