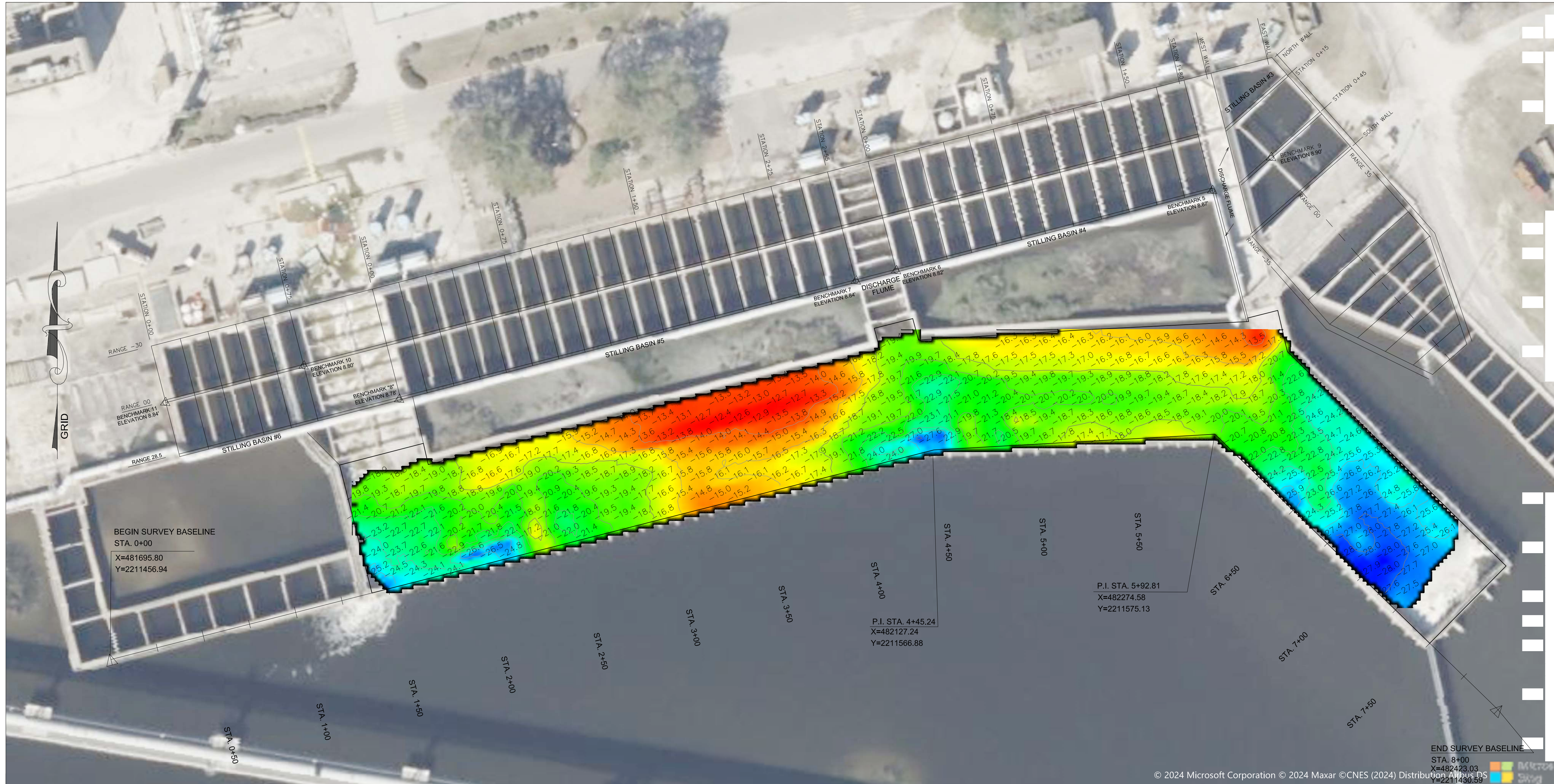


MAP SHOWING A HYDROGRAPHIC SURVEY OF EXISTING CONDITIONS AT THE JEA DISCHARGE FLUME, LOCATED IN DUVAL COUNTY, FLORIDA



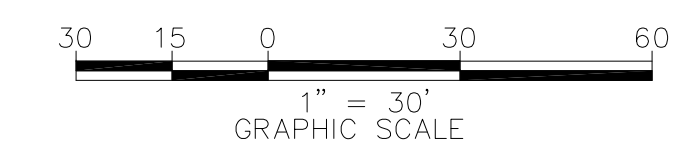
- SURVEY NOTES:**
- HORIZONTAL DATUM: NORTH AMERICAN DATUM OF 1983, STATE PLANE COORDINATES, FLORIDA EAST ZONE.
 - VERTICAL DATUM: NGVD 29 NATIONAL GEODETIC VERTICAL DATUM 1929. ELEVATIONS ARE IN FEET AND TENTHS.
 - UNITS: U.S SURVEY FEET.
 - CONTOUR INTERVAL: 1 FOOT.
 - TIDAL REDUCTIONS WERE MADE USING SITE BENCH #7 MARK ON THE FLUME WALL. (ELEV. 8.8' NGVD 29) REFERENCED FROM CONTROL MONUMENT USCG P325 1970. A MARK ON THE SOUTHWEST CORNER OF THE SOUTHEAST CONCRETE BASE OF A TRANSMISSION TOWER, ELEVATION 11.44 N.G.V.D. 1929.
 - THIS HYDROGRAPHIC SURVEY WAS PERFORMED UTILIZING REAL TIME KINEMATIC (RTK) SURVEYING METHODS FOR HORIZONTAL POSITIONING.
 - SOUNDINGS INSIDE OF THE DISCHARGE FLUME WERE COLLECTED WITH A TELEDYNE E-20 SINGLE FREQUENCY SOUNDER OPERATING AT 200 KHz.
 - DATA PROCESSING WAS COMPLETED USING HYPACK HYSWEEP SOFTWARE.
 - THE INFORMATION DEPICTED ON THIS MAP REPRESENTS THE RESULTS OF A SURVEY PERFORMED ON THE INDICATED DATES BELOW AND CAN ONLY BE CONSIDERED AS INDICATING THE GENERAL CONDITIONS AT THAT TIME.
 - SURVEY QUALITY CONTROL STANDARDS AND FIELD EQUIPMENT CALIBRATIONS WERE FOLLOWED DURING THIS SURVEY IN ACCORDANCE WITH EM 1110-2-1003 FOR CLASS 1 HYDROGRAPHIC SURVEYS.
 - BACKGROUND PHOTOGRAPHY WAS OBTAINED FROM "WWW.LABINS.ORG".

LEGEND/ABBREVIATIONS

	= BENCHMARK FOUND
	"X-CUT" IN CONCRETE
	= BLUEVIEW HYDROGRAPHIC SURVEY ELEVATIONS

- QUANTITY NOTE:**
- MATERIAL AVAILABLE INSIDE PERIMETER IS 10,264± Cubic Yards. WHICH WAS CALCULATED UTILIZING THE MASS AREA VOLUME METHOD.
 - TEMPLATE IS TO -28.0'.

Preliminary



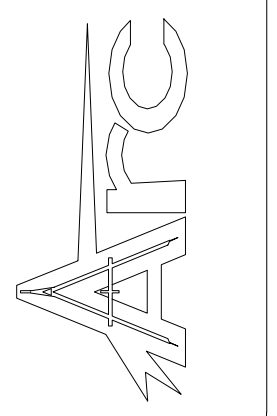
John K. Maffett
Professional Surveyor and Mapper No. 6951
NOT VALID WITHOUT THE SIGNATURE AND THE ORIGINAL RAISED SEAL OF A FLORIDA LICENSED SURVEYOR AND MAPPER

DATE	BY	REVISION

Project Title:
JEA Discharge Flume Hydrographic Survey

Prepared For:
Logan Diving & Salvage
2815 St. Johns Bluff Road South
Jacksonville, FL 32246

Arc Surveying & Mapping, Inc.
Professional Hydrographers • Surveyors • Mappers
5202 San Juan Avenue
Jacksonville, Florida 32210
904.384.8377



LB No. 6487
Drawn By: JKM
Scale: SEE MAP
Plot Date: 12/05/2024
File Name: D-24-196
Fld Bk / Pg: xx/xx/xx
ARC Project No.: 24-196