

TWIN CREEKS WASTEWATER BOOSTER PUMP STATION

DRIVING DIRECTIONS

Address: 106 County Road 210 W., St. Johns, FL 32259

From US-1 / Philips Hwy Option 1

- ↩ ↪ Turn Left or Right depending on direction you are heading off of US-1 on to Old County Road 210 W

- ↪ Turn Right on to County Road 210
 - Travel approximately 750 ft

- ↪ Turn Right on to JEA easement access road
 - Follow Map Option 1 attached.

From I-95 Option 1

- Take Exit 329 from I-95

- ↩ ↪ Turn Right if coming from North Bound and Turn Left if coming from South Bound on County Road 210

- ↪ Turn Right on to JEA easement access road 750ft passed Old County Road 210 Traffic Light
 - Follow Map Option 1 attached.

FROM US-1 / Philips Hwy Option 2

- ↩ ↪ Turn Left or Right depending on direction you are heading off of US-1 on to Old County Road 210 W

- ↩ Turn Left on to JEA easement access road across from Creekside development entrance.
 - Follow Map Option 2 attached.

From I-95 Option 2

- Take Exit 329 from I-95
- ↩ ↪ Turn Right if coming from North Bound and Turn Left if coming from South Bound on County Road 210
- ↪ Turn Right on Old County Road 210 E
- ↩ Turn Left on to JEA easement access road across from Creekside development entrance.
- Follow Map Option 2 attached.



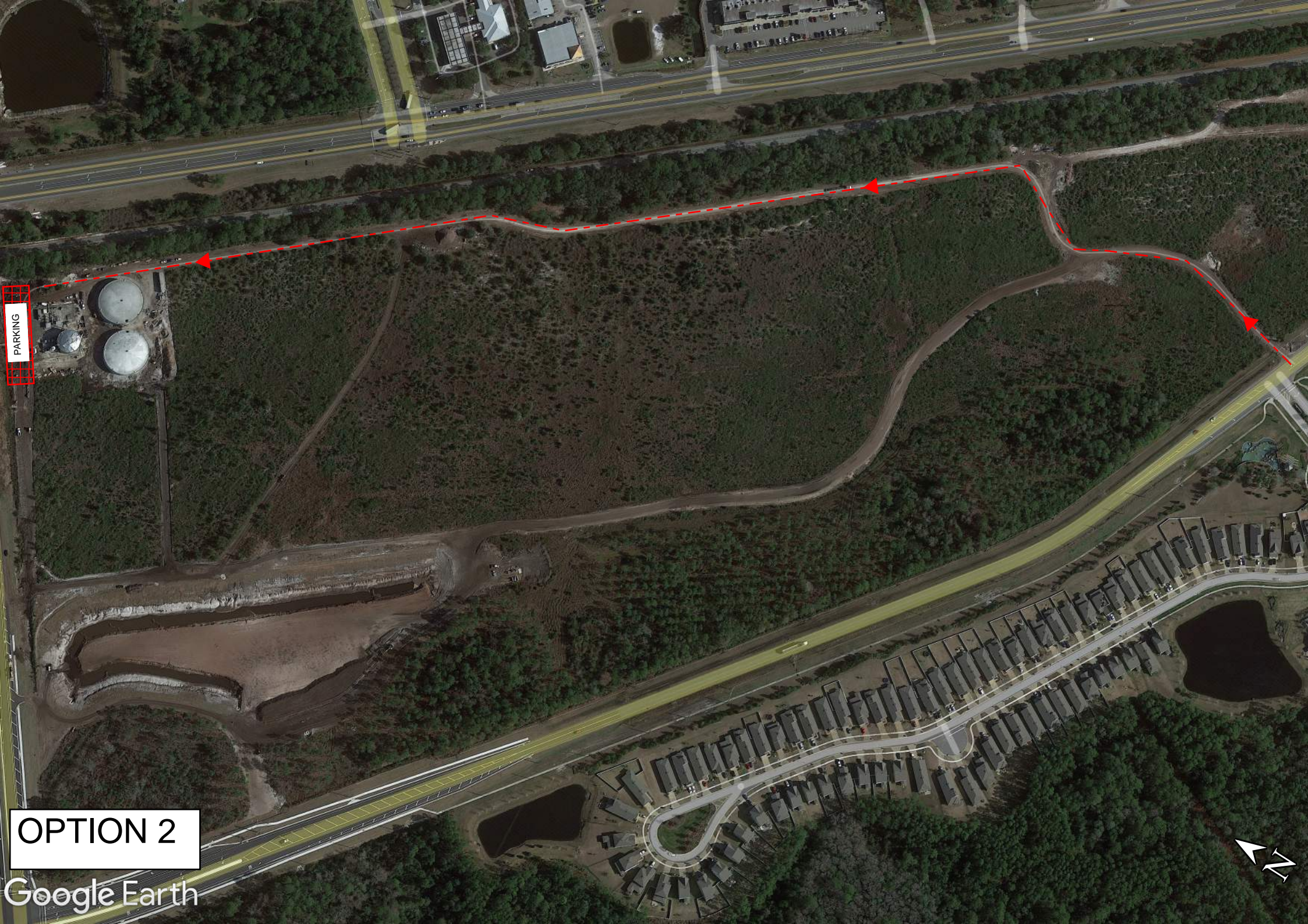
210 West Bound

210 East Bound

PARKING

OPTION 1
Google Earth





PARKING

OPTION 2

Google Earth

