

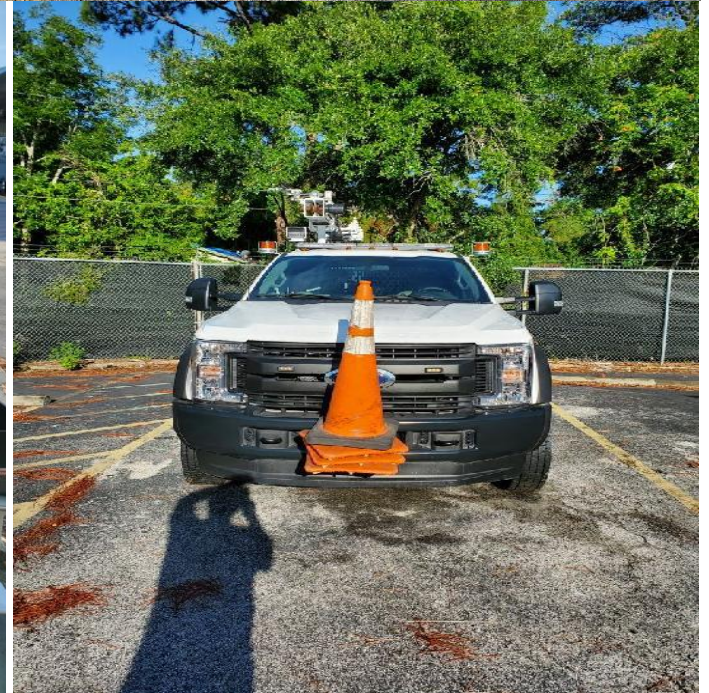
**SPECIFICATION, JEA CLASS 132: TRUCK 1 T 4X4 EXT CAB GROUND ROD DRIVER / FLATBED**  
**UPDATED JULY 2020**

**1. SCOPE**

It is the intent of the JEA to purchase multiple 1 Ton 4X4 Ext Cab Ground Rod Driver / Flatbed (FORD F-550 with 19,500 GVWR or equivalent) with various configurations, up-fits and options. All units must be tested and delivered to the JEA Fleet Facility (5717 New Kings Road Jacksonville, Florida 32209) in complete operational condition, with all required equipment and documentation by the date specified per awarded contract.

**2. MODEL**

New current model year production 1 Ton 4X4 Ext Cab Ground Rod Driver / Flatbed (Ford F-550 with 19,500 GVWR or equivalent). Reference JEA In-Service Unit # 50042 for layout and option details.



**SPECIFICATION, JEA CLASS 132: TRUCK 1 T 4X4 EXT CAB GROUND ROD DRIVER / FLATBED**  
**UPDATED JULY 2020**

**3. CHASSIS (EXTENDED CAB)**

- 3.1 GVWR: 19500 lbs
- 3.2 Wheel Base: Between 189" and 201" to accommodate Flatbed and Ground Rod Driver
- 3.3 Cab to Axle: Between 84" and 108"
- 3.4 Overall Height: Not to exceed 115"
- 3.5 Overall Length: Not to exceed 315"
- 3.6 Width Including Mirrors: not to exceed 102"
- 3.7 Minimum Ground Clearance: 8"
- 3.8 Wheels: 19.5", steel or aluminum
- 3.9 Minimum Seating Capacity: Six (6) Include front seat collapsible center console option with storage and minimum 2-cup holders
- 3.10 Pay Load: 12,500 lbs. or greater

**4. ENGINE (DIESEL)**

- 4.1 Horse Power: Minimum 330 HP
- 4.2 Torque: Minimum 750 LBS
- 4.3 No Automatic Idle Shutdown
- 4.4 B20 Biodiesel Capable

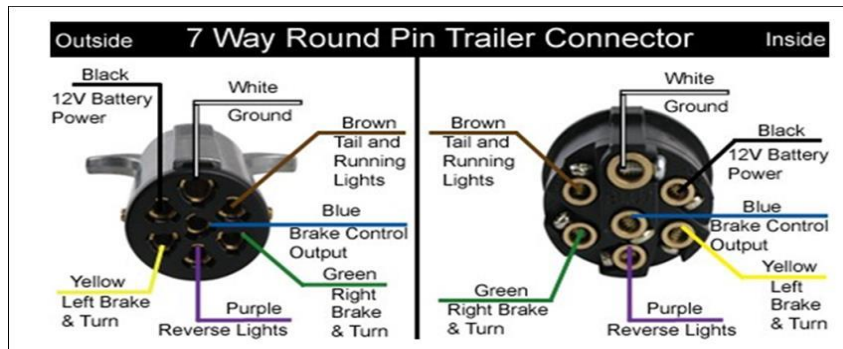
**5. TRANSMISSION WITH PTO PROVISION**

- 5.1 Six (6) or Ten (10)-Speed Automatic
- 5.2 PTO Provision

**6. TOWING**

- 6.1 Class-4 towing package
- 6.2 OEM 7 Pin Round Trailer Plug (JEA Standard)

**SPECIFICATION, JEA CLASS 132: TRUCK 1 T 4X4 EXT CAB GROUND ROD DRIVER / FLATBED**  
**UPDATED JULY 2020**



6.3 Minimum max loaded trailer weight (Conventional) 10,000 lbs

6.4 OEM integrated brake controller

**7. DIFFERENTIALS**

7.1 Limited slip or lockable

**8. TIRES**

8.1 Tires: All terrain tread

**9. BRAKES**

9.1 Four wheel disc brakes

9.2 Anti-Lock brake system (ABS)

**10. FUEL TANK**

10.1 Minimum 40 gallon useable fuel capacity

**11. CHASSIS ELECTRICAL AND LIGHTING (NO SCOTCH LOCK CONNECTIONS)**

**NOTE:** WIRE ALL LED STROBE LIGHTS TO ONE OEM UP-FITTER SWITCH IN CAB with Label. WIRE ALL UTILITY BIN and TOOL BOX LED ROPE LIGHTING TO ONE OEM UP-FITTER SWITCH IN CAB with Label.

11.1 Meters (In Cab / Dash Mounted): hour meter, mileage, engine oil pressure, engine temperature, charging system, fuel level etc.

11.2 Auxiliary Accessory Fuse Block: Purpose is to wire GPS, fuel rings, JEA Radio, DC accessory power outlets etc. Wire to waterproof resettable breaker so we can isolate from the vehicle OEM system if needed. An acceptable example is listed below including picture

Blue Sea Systems ST Blade ATO/ATC Fuse Blocks  
Style Name: 12-Circ Split w/Cover & Neg

**SPECIFICATION, JEA CLASS 132: TRUCK 1 T 4X4 EXT CAB GROUND ROD DRIVER / FLATBED**  
**UPDATED JULY 2020**



- 11.3 All Cab / Chassis Lights: LED only
- 11.4 LED Strobe Light System: Six point recessed with amber light
- 11.5 DC Accessory Power Outlets: One additional DC power outlets in cab for accessories with spring loaded cover. See example below: NAPA Part # BK 7821773 or equal. Wire to the Auxiliary Accessory Fuse BLOCK



- 11.6 Power Package: Power windows, locks, mirrors (Heated), cruise control and tilt wheel
- 11.7 Factory installed air conditioner and heater
- 11.8 Front parking sensors, blind spot monitoring, back up sensors and backup alarm
- 11.9 OEM AM / FM Stereo with auxiliary input, backup camera, and Bluetooth hands free. Units must meet FMVSS111 Requirements.
- 11.10 Whelen Justice JV WeCan Series Super LED (MODEL JV2A) Strobe Light or equivalent: Amber color with aluminum base to include multi-function/pattern light bar controls to include directional. Hard Mount/Wire to the Headache Rack. No exposed wires and do not encroach in bed area
- 11.11 LED Bin Lighting: All utility bins and toolboxes
- 11.12 LED Area/Ground Lighting: Driver side, passenger side and rear of vehicle
- 11.13 OEM UP-FITTER Switches
- 11.14 Power Inverter: 2400W Pure Sine Wave Inverter. Mount inverter in left front weatherproof bin. Mount dual weatherproof 120V GFCI outlet at rear of vehicle underneath bed and accessible from the rear of the truck.

**12. FLATBED WITH INTEGRATED TELESCOPING GROUND ROD DRIVER ATTACHMENT**

- 12.1 Flatbed: 150" Long X 94" Wide
- 12.2 Cab Guard: Use stamped metal around rear window area for rear visibility.

**SPECIFICATION, JEA CLASS 132: TRUCK 1 T 4X4 EXT CAB GROUND ROD DRIVER / FLATBED**  
**UPDATED JULY 2020**

- 12.3 Ground Rod Storage Bin (Open Top): 125" Long X 8" Wide X 8" Deep
- 12.4 Weatherproof Lockable Bin: Mounted left front of flatbed 36" Wide X 18" High X 18" Deep. Hinge door on the top side and include hydraulic openers.
- 12.5 Integrated Slide In Tray: Accessible at the rear under bed 15" Long X 29" Wide X 3" Deep
- 12.6 Aluminum Hand Wash Tank with Ball Valve: 5 Gallon Capacity
- 12.7 JEA standard 5 gallon aluminum water keg holder (full circle aluminum). Include Igloo 5 gallon water keg.
- 12.8 2 Polymer Outrigger Pads with Storage Compartments (Compartments Mounted Under Flat Bed (1 DS & 1 PS))
- 12.9 Integrated Wheel Chock Bins with Wheel Chocks
- 12.10 Spring loaded retractable grounding reel

**13. TELESCOPING GROUND ROD DRIVER WITH WIRELESS REMOTE (ALTEC G10 or Equivalent)**

- 13.1 Turntable:
  - Extension – between 25" – 27"
  - Rotation – between 130 – 140 degrees
- 13.2 Boom
  - Articulation – minimum 0 – 100 degrees
  - Extension – between 46" – 48"
- 13.3 Ground Rod Size
  - Length – up to 10'
  - Diameter – up to 0.63"
- 13.4 Driver Hammer (Hydraulic): 90 lbs
- 13.5 Outriggers with motion alarm, rear mounted
- 13.6 Wireless remote control with emergency stop (must operate all boom functions)
- 13.7 Automatic boom stow latch
- 13.8 Hydraulic tool circuit with 25' retractable reel with dripless fittings
- 13.9 Hydraulic reservoir between 28 – 32 gallon capacity to accommodate ground rod driver and tool circuit
- 13.10 Manual hydraulic controls (all controls must be labeled)

**14. ADDITIONAL REQUIRED EQUIPMENT**

- 14.1 Window Tint: driver, passenger & rear windows (Max Legal in FL)
- 14.2 Spray In Bed Liner: bed, tail gate and inside aluminum tool boxes (LINE X or equal)
- 14.3 OEM Cab Steps: Driver and passenger side

**SPECIFICATION, JEA CLASS 132: TRUCK 1 T 4X4 EXT CAB GROUND ROD DRIVER / FLATBED**  
**UPDATED JULY 2020**

- 14.4 Collapsible Cone Holder (JEA Standard / Template): Mounted centered / front bumper



- 14.5 Seat Belts: Fluorescent Green



- 14.6 Tow/Recovery Hooks: Front

**15. COLOR/GRAPHICS**

- 15.1 White exterior
- 15.2 Delete all vendor and manufacturer identification decals except required safety & reference identification tags, decals, data plates & placards.
- 15.3 Install Vehicle Height Warning Placard with maximum height (feet/inches) in cab on the dash (driver's view) and on driver's side door (outside of vehicle, close to door handle)
- 15.4 Install decal on hitch plate next to pintle hitch to include the MAX tow capacity and MAX tongue weight

**16. MANUALS, VIDEOS, KEYS & OPERATOR ORIENTATION**

- 16.1 (1) set of operator manuals per unit (HARD COPY). (1) Electronic copy maintenance, repair & parts manuals
- 16.2 Provide five (5) complete sets of keys per unit (3 FOB Keys and 2 Standard Keys for Chassis) including attachments, bins and tool boxes. Key all bins and tool boxes alike. Stamp/Engrave JEA provided 5 digit unit number on all keys.
- 16.3 One (1) on-site JEA Operator Orientation Class (Complete Unit: Chassis and Attachments)
- 16.4 One (1) on-site JEA Maintenance Orientation Class (Complete Unit: Chassis and Attachments)

**SPECIFICATION, JEA CLASS 132: TRUCK 1 T 4X4 EXT CAB GROUND ROD DRIVER / FLATBED**  
**UPDATED JULY 2020**

16.5 Include a paper copy Specification / Build Sheet / Drawings in all units including Key Codes

**17. DRAWINGS & WEIGHT STUDY**

17.1 Scaled Drawings will be provided to JEA upon receipt of order. Drawings will include all interior/exterior and equipment layout details & dimensions. Final Drawings / Layout will be approved by JEA before work is started. Include one electronic copy (Flash Drive). Drawings may be used at JEA's discretion for solicitations, request for information, reference for repairs, etc.

17.2 Provide weight study

**18. WARRANTY**

18.1 Minimum 3 Year / 36,000 Mile Cab/Chassis. Must include all standard manufacturer warranties.

18.2 Minimum 2 Year Attachment Warranties (Boom and Body). Must include all standard manufacturer warranties.

18.3 Warranty period starts when units are received at JEA's fleet facility and are inspected and accepted

**19. OTHER REQUIREMENTS**

19.1 Purchase and Install Yellow City License Plates

19.2 Install JEA provided decals (You may use JEA's current vendor at your expense)

19.3 Install JEA provided safety equipment: Purple-K fire extinguisher (5 LB), first aid kit and key safe

19.4 Current DOT Inspection / Certification with decal installed lower left inside corner of windshield. Include current date, current hours, next service due date and next service due hours.

19.5 Include a paper copy specification / build sheet in all units including key codes

19.6 Must include/document the VIN number, make, model, description, JEA PO # and JEA provided 5 digit unit # on all invoices

19.7 Awarded vendor must complete and submit the JEA provided Vehicle and Equipment Attribute Data Spreadsheet

19.8 Reflective roadside triangle warning/hazard kit



**SPECIFICATION, JEA CLASS 132: TRUCK 1 T 4X4 EXT CAB GROUND ROD DRIVER / FLATBED**  
**UPDATED JULY 2020**

**NOTE:** All units, attachments, products and services must meet and comply with all applicable regulations and specifications including but not limited to Federal and State Laws, OSHA Regulations, ANSI Standards, DOT Regulations and ASTM Standards. All units must be delivered to the JEA Fleet Facility with a minimum  $\frac{3}{4}$  tank of fuel. Contact Thurman McGlothlin at 904-576-9382 48 hours prior to delivery. Delivery times are Monday through Friday 07:00 AM – 03:00 PM at 5717 New Kings Road Jacksonville Florida, 32209.