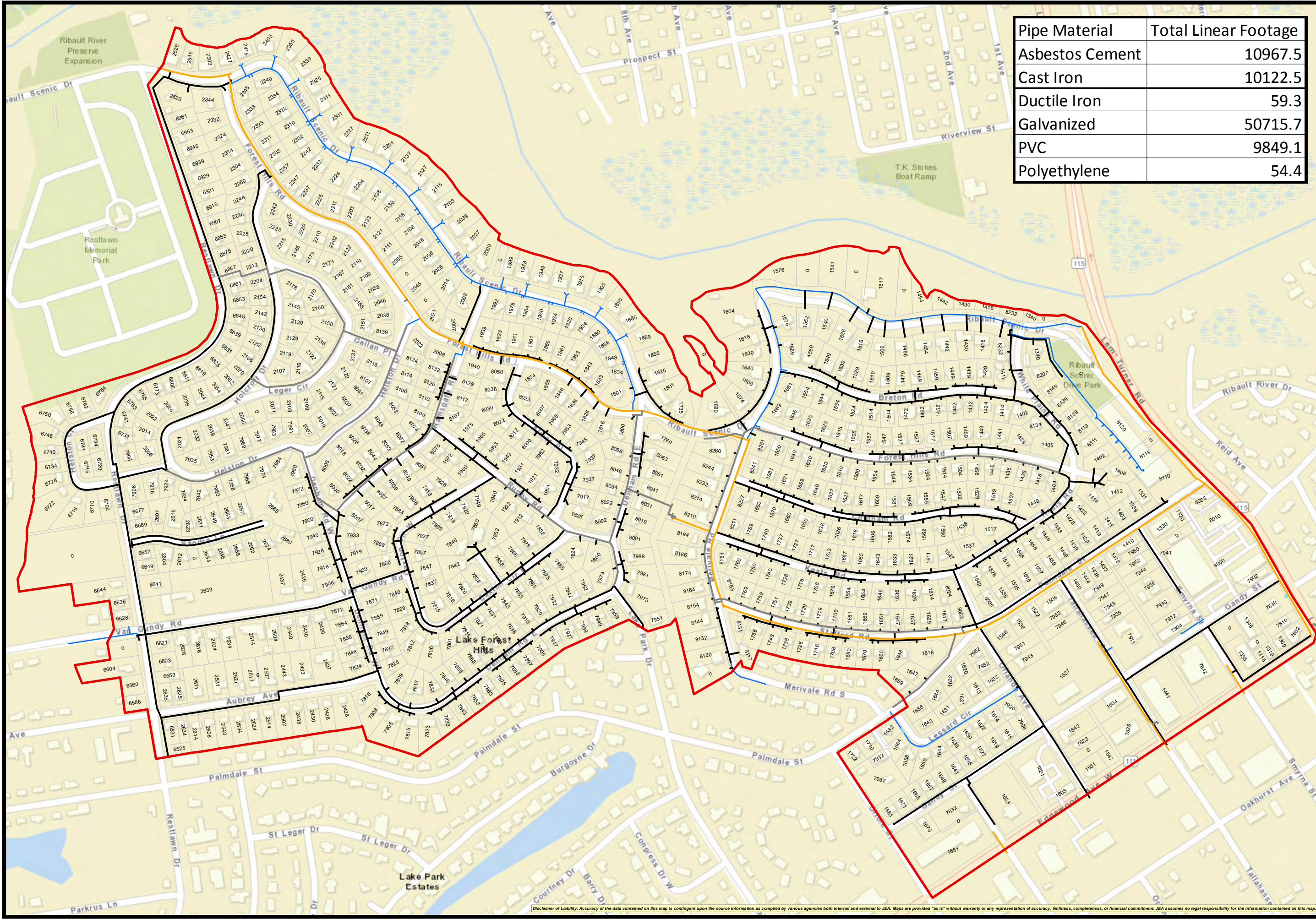




Delivery & Collection  
2434 Pearl Street N  
May 2018

Pipe Material	Total Linear Footage
Asbestos Cement	10967.5
Cast Iron	10122.5
Ductile Iron	59.3
Galvanized	50715.7
PVC	9849.1
Polyethylene	54.4

# BEVERLY HILLS Septic Tank Phase Out (Water)



**Legend**

- █ Beverly Hills STPO
- █ Asbestos Cement
- █ Cast Iron
- █ Ductile Iron
- █ Galvanized
- █ PVC
- █ Polyethylene

Date: 5/10/2018

North  
Northeast Florida

0 100 200 400  
Feet

Disclaimer of Liability: Accuracy of the data contained on this map is contingent upon the source information as compiled by various agencies both internal and external to JEA. Maps are provided "as is" without warranty or any representation of accuracy, timeliness, completeness, or financial commitment. JEA assumes no legal responsibility for the information contained on this map.