

SPECIFICATION, JEA CLASS 123: TRUCK 1 T 4X2 STANDARD CAB AND EXT CAB DRW 9' AND 11' UTILITY BODY – Addendum One

1. SCOPE

It is the intent of the JEA to purchase multiple One Ton 4X2 Standard Cab and Extended Cab DRW Trucks with 9' and 11' Utility Body (FORD F-550 with 19,500 GVWR or Equivalent) and various configurations, up-fits and options. All units must be tested and delivered to the JEA Fleet Facility (5717 New Kings Road Jacksonville, Florida 32209) in complete operational condition, with all required equipment and documentation by the date specified per awarded contract.

2. MODEL:

New current model year production 1 T 4X2 Standard Cab and Extended Cab DRW Trucks with 9' and 11' Utility Body (FORD F-550 with 19,500 GVWR or Equivalent). Reference JEA In-Service Units for layout and option details.

NOTE: ALL UNITS WITH BOOM ATTACHMENTS / WIRELESS CONTROLLERS REQUIRE PROPOTIONING VALVES TO ALLOW FEATHERABLE CONTROLS / VARIABLE FUNCTION SPEEDS.



3. CHASSIS

3.1 GVWR: 19500 lbs

3.2 Wheel Base:

- Standard Cab Long Wheel Base between 165" and 172"
- Extended Cab Long Wheel Base between 191.9" and 193"
- Standard Cab Short Wheel Base between 140" and 148"
- Extended Cab Short Wheel Base between 167" and 169"

3.3 Height: not to exceed 92"

3.4 Length:

- Standard Cab Long Wheel Base not to exceed 310"
- Extended Cab Long Wheel Base not to exceed 324"
- Standard Cab Short Wheel Base not to exceed 287"
- Extended Cab Short Wheel Base not to exceed 302"

3.5 Width Including Mirrors: not to exceed 100"

3.6 Minimum Ground Clearance: 8"

**SPECIFICATION, JEA CLASS 123: TRUCK 1 T 4X2 STANDARD CAB AND EXT CAB DRW 9' AND 11' UTILITY BODY
– Addendum One**

- 3.7 Wheels: 19.5", steel or aluminum
- 3.8 Minimum Seating Capacity: Standard Cab, Three (3) and Extended Cab, Six (6). Include front seat collapsible center console option with storage and minimum 2 cup holders
- 3.9 Pay Load: 12,500 lbs. or greater
- 3.10 Cab to Axle:
 - Standard Cab and Extended Cab Long Wheel Base between 84" and 86"
 - Standard Cab and Extended Cab Short Wheel Base between 59" and 61"

4. ENGINE (DIESEL)

- 4.1 Horse Power: Minimum 330 HP
- 4.2 Torque: Minimum 750 LBS
- 4.3 No Automatic Idle Shutdown
- 4.4 B20 Biodiesel Capable

5. TRANSMISSION WITH PTO PROVISION

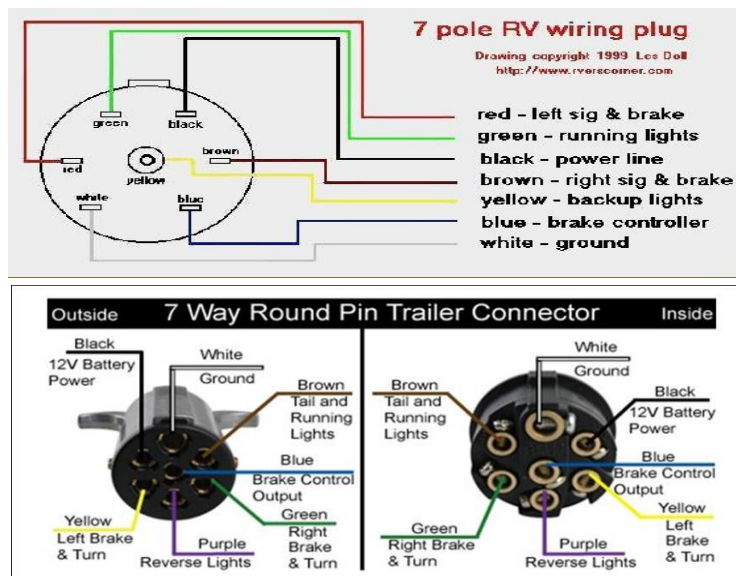
- 5.1 **Six (6) or Ten (10)-Speed Automatic**
- 5.2 PTO Provision

6. TOWING

- 6.1 Class-4 towing package with pintle / 2" ball combination insert (Tow Ready # 63011 and # 63057)



- 6.2 OEM 7 Pin RV Trailer Plug and 7 Pin Round Trailer Plug (JEA Standard). Both plugs are required on all units.



**SPECIFICATION, JEA CLASS 123: TRUCK 1 T 4X2 STANDARD CAB AND EXT CAB DRW 9' AND 11' UTILITY BODY
– Addendum One**

6.3 Minimum max loaded trailer weight (Conventional) 14,000 lbs

6.4 OEM integrated brake controller

7. DIFFERENTIALS

7.1 Limited slip or lockable

8. TIRES

8.1 Tires: All terrain tread

9. BRAKES

9.1 Four wheel disc brakes

9.2 Anti-Lock brake system (ABS)

10. FUEL TANK

10.1 Minimum 40 gallon useable fuel capacity

11. CHASSIS ELECTRICAL AND LIGHTING (NO SCOTCH LOCK CONNECTIONS)

NOTE: WIRE ALL LED STROBE LIGHTS TO ONE OEM UP-FITTER SWITCH IN CAB with Label. WIRE ALL UTILITY BIN and TOOL BOX LED ROPE LIGHTING TO ONE OEM UP-FITTER SWITCH IN CAB with Label.

11.1 Meters (In Cab / Dash Mounted): hour meter, mileage, engine oil pressure, engine temperature, charging system, fuel level etc

11.2 Auxiliary Accessory Fuse Block: Purpose is to wire GPS, fuel rings, JEA Radio, DC accessory power outlets etc. Wire to waterproof resettable breaker so we can isolate from the vehicle OEM system if needed. An acceptable example is listed below including picture.

Blue Sea Systems ST Blade ATO/ATC Fuse Blocks
Style Name: 12-Circ Split w/Cover & Neg



**SPECIFICATION, JEA CLASS 123: TRUCK 1 T 4X2 STANDARD CAB AND EXT CAB DRW 9' AND 11' UTILITY BODY
– Addendum One**

- 11.3 All Cab / Chassis Lights: LED only
- 11.4 LED Strobe Light System: Six point recessed with amber light
- 11.5 DC Accessory Power Outlets: One additional DC power outlets in cab for accessories with spring loaded cover. See example below: NAPA Part # BK 7821773 or equal. Wire to the Auxiliary Accessory Fuse BLOCK



- 11.6 Power Package: Power windows, locks, mirrors (Heated), cruise control and tilt wheel
- 11.7 Factory installed air conditioner and heater
- 11.8 Front parking sensors, blind spot monitoring, back up sensors and backup alarm
- 11.9 OEM AM / FM Stereo with auxiliary input, backup camera, and Bluetooth hands free. Units must meet FMVSS111 Requirements.
- 11.10 Whelen Justice JV WeCan Series Super LED (MODEL JV2A) Strobe Light or equivalent: Amber color with aluminum base. Hard mount and wire to the BACK RACK MODEL DR 150 Headache Rack with the BACK RACK LIGHT BAR BRACKETS # 91006. No exposed wires.
- 11.11 Remote Controlled Spot Light: Model # 20074, Radioray LED or equivalent. Hard wire and mount to the JV WeCan Series Super LED MODEL JV2A Light Bar. No exposed wires.
- 11.12 LED Bin Lighting: All utility bins and tool boxes
- 11.13 LED Area/Ground Lighting: Drivers side, passenger's side and rear of vehicle
- 11.14 OEM UP-FITTER Switches

12. ADDITIONAL REQUIRED EQUIPMENT

- 12.1 Window Tint: driver, passenger & rear windows (Max Legal in FL)
- 12.2 Spray In Bed Liner: bed, tail gate and inside aluminum tool boxes (LINE X or equal)
- 12.3 OEM Cab Steps: Drivers and passenger side
- 12.4 Collapsible Cone Holder (JEA Standard / Template): Mounted centered / front bumper



**SPECIFICATION, JEA CLASS 123: TRUCK 1 T 4X2 STANDARD CAB AND EXT CAB DRW 9' AND 11' UTILITY BODY
– Addendum One**

- 12.5 BACK RACK Headache Rack Model with expanded metal and BACK RACK strobe light mounting brackets or equivalent (Mount Whelen Justice JV WeCan Series Super LED MODEL JV2A Strobe Light). See JEA in-service units for general detail.
- 12.6 Seat Belts: Fluorescent Green



- 12.7 Tow/Recovery Hooks: Front
- 12.8 Masterlock System to Operate from Rear of Body
- 12.9 SIX Collapsible D-Rings: (3 on each side) Inside utility bed mounted approximately 16" from floor/deck & evenly spaced. Purpose: to secure loads.

13. COLOR/GRAPHICS

- 13.1 White exterior
- 13.2 Delete all vendor and manufacturer identification decals except required safety & reference identification tags, decals, data plates & placards

14. MANUALS, VIDEOS, KEYS & OPERATOR ORIENTATION

- 14.1 One (1) Set of operator manuals (Hard Copy) per unit
- 14.2 Provide five (5) complete sets of keys per unit (3 FOB Keys and 2 Standard Keys for Chassis) including attachments, bins and toolboxes. Key all bins and toolboxes alike. Stamp/Engrave JEA provided 5-digit unit number on all keys.
- 14.3 One (1) on-site JEA Operator Orientation Class (Complete Unit: Chassis and Attachments)
- 14.4 One (1) on-site JEA Maintenance Orientation Class (Complete Unit: Chassis and Attachments)

15. DRAWINGS

- 15.1 Scaled Drawings will be provided to JEA upon receipt of order. Drawings will include all interior/exterior and equipment layout details & dimensions. Final Drawings / Layout will be approved by JEA before work is started. Include one electronic copy (Flash Drive). Drawings maybe used at JEA's discretion for solicitations, request for information, reference for repairs, etc.

16. WARRANTY

- 16.1 Minimum 3 Year / 36,000 Mile warranty and all standard manufacturer warranties including component warranties

**SPECIFICATION, JEA CLASS 123: TRUCK 1 T 4X2 STANDARD CAB AND EXT CAB DRW 9' AND 11' UTILITY BODY
– Addendum One**

16.2 Warranty period starts when units are received at JEA's fleet facility and are inspected and accepted

17. OTHER REQUIREMENTS

17.1 Purchase and Install Yellow City License Plates

17.2 Install JEA provided decals (You may use JEA's current vendor at your expense)

17.3 Install JEA provided safety equipment: Purple-K fire extinguisher (5 LB), first aid kit and key safe

17.4 Current DOT Inspection / Certification with decal installed lower left inside corner of windshield. Include current date, current hours, next service due date and next service due hours

17.5 Include a paper copy specification / build sheet in all units including key codes

17.6 Must include/document the VIN number, make, model, description, JEA PO # and JEA provided 5 digit unit # on all invoices

17.7 Awarded vendor must complete and submit the JEA provided Vehicle and Equipment Attribute Data Spreadsheet



17.8 Reflective roadside triangle warning/hazard kit

OPTION A: GENERAL SPECIFICATION SECTIONS 1 through SECTIONS 17 AND THE FOLLOWING

NOTE: Reference JEA Unit # 6941 for Clarification, J Godsey

- 1500 Watt PURE SIGN WAVE Power Inverter: Mounted behind PS seat on bulk head with outlets facing DS
- Aluminum Wash Tank with Ball Valve (5 Gallon): Mounted RR / top of bumper.
- Aluminum Key Rack: Mounted inside RR utility body (Upgraded Design)
- JEA standard 5 gallon aluminum water keg holder (full circle aluminum). Mounted RR top of utility body. Include Igloo 5 gallon water keg.
- 2 Door Aluminum Bin, Doors Hinged Topside: Mounted to DS top of utility body (21" Tall X 20" Wide X 96" Long)

OPTION B: GENERAL SPECIFICATION SECTIONS 1 through SECTIONS 17 AND THE FOLLOWING

- 1500 Watt PURE SIGN WAVE Power Inverter: Mounted behind PS seat on bulk head with outlets facing DS.
- Aluminum Wash Tank with Ball Valve (5 Gallon): Mounted under stowed crane RR / top of utility body.
- JEA standard 5 gallon aluminum water keg holder (full circle aluminum). Mounted LF top of utility body. Include Igloo 5 gallon water keg.
- 7500 LB Capacity Crane: Full hydraulic (Chassis PTO), wireless remote controller, full hydraulic outriggers (Vertical & Horizontal Actuation), level indicators and alarm mounted RR utility body, 21 feet boom reach (STELLER Model 7621 or Equal).

**SPECIFICATION, JEA CLASS 123: TRUCK 1 T 4X2 STANDARD CAB AND EXT CAB DRW 9' AND 11' UTILITY BODY
– Addendum One**

- Aluminum 96 X 20 X 20 topside box with drip rail street side with gas shocks
- VISE: Wilton 6"

OPTION C: GENERAL SPECIFICATION SECTIONS 1 through SECTIONS 17 AND THE FOLLOWING

- 1500 Watt PURE SIGN WAVE Power Inverter: Mounted behind PS seat on bulk head with outlets facing DS.
- Aluminum Wash Tank with Ball Valve (5 Gallon): Mounted LR / top of utility body.
- JEA standard 5 gallon aluminum water keg holder (full circle aluminum). Mounted RF top of utility body. Include Igloo 5 gallon water keg.
- 4400 LB Capacity Crane: Full hydraulic (Chassis PTO), wireless remote controller, full hydraulic outriggers (Vertical & Horizontal Actuation), level indicators and alarm mounted RR utility body, 21 feet boom reach (STELLER Model 4421 or Equal).

OPTION D: GENERAL SPECIFICATION SECTIONS 1 through SECTIONS 17 AND THE FOLLOWING

NOTE: Reference Unit # 50002 / General Layout

- 1500 Watt PURE SIGN WAVE Power Inverter: Mounted behind PS seat on bulk head with outlets facing DS.
- Aluminum Wash Tank with Ball Valve (5 Gallon): Mounted LR / top of utility body.
- JEA standard 5 gallon aluminum water keg holder (full circle aluminum). Mounted RF top of utility body. Include Igloo 5 gallon water keg.
- VISE: Wilton 6" Mounted RR Bumper.
- Gas Cylinder/Bottle Racks (Lockable): TWO 3 bottle capacity racks. 1 mounted RR/inside bed and 1 mounted LR/inside bed.
- HOSE REELS: Mounted LR top of utility body.
- Ladder Bin with Grip Strut Top: Mounted top of utility body curb side. See picture below:



- 1600 LB Capacity Lift Gate: MAXON ME2 SERIES 49" X 27", ALUMINUM with Dual Hydraulic Cylinders and Remote Control Pendant.

**SPECIFICATION, JEA CLASS 123: TRUCK 1 T 4X2 STANDARD CAB AND EXT CAB DRW 9' AND 11' UTILITY BODY
– Addendum One**

OPTION E: GENERAL SPECIFICATION SECTIONS 1 through SECTIONS 17 AND THE FOLLOWING

NOTE: Reference JEA Unit # 6983

- 1500 Watt PURE SIGN WAVE Power Inverter: Mounted inside RF bin to roof with breaker.
- Aluminum Wash Tank with Ball Valve (5 Gallon): Mounted RR / top of bumper.
- JEA standard 5 gallon aluminum water keg holder (full circle aluminum). Mounted LF top of utility body. Include Igloo 5 gallon water keg.
- RESIDENTIAL Meter Box Racks (2): DS & PS top of utility body.
- Aluminum Shovel Rack (10" Wide Version): Mount RR inside utility bed.
- Aluminum Barricade Rack: Mount RF inside utility body.

OPTION F: GENERAL SPECIFICATION SECTIONS 1 through SECTIONS 17 AND THE FOLLOWING

NOTE: Reference JEA COMP Truck # 7154

- 1500 Watt PURE SIGN WAVE Power Inverter: Mounted inside RF bin to roof with breaker.
- Aluminum 16 x 13 x 8 Hand Wash Tank with Ball Valve: Mounted RR / top of bumper.
- JEA standard 5 gallon aluminum water keg holder (full circle aluminum). Mounted LF top of utility body. Include Igloo 5 gallon water keg.
- Boss Model 8060-UBI B-CAN PTO Drive Underdeck Air Compressor (100-125 CFM @ 110 PSIG Continuous). Plum air lines to rear bumper. NOTE: Must be able to run a 90 LB Jack Hammer sustained, at full capacity.
- LED Lighting Horizontal Not Vertical Mount.
- TWO LED Go Lights: 1 mounted DS headache rack & 1 mounted PS headache rack.
- 18" HD Rear Storage Bumper & Vise Plate.
- Aluminum 96 X 20 X 20 topside box with drip rail streetside with gas shocks.
- Aluminum 132 x 12 x 20 Bin (Rear 10" X 20" Door Opening) with Side Access: Mounted curbside RC2012.



- (2) cable style stirrup strips.
- Aluminum Shovel Bin: 10" wide mounted curbside.
- VISE: Wilton 6".

SPECIFICATION, JEA CLASS 123: TRUCK 1 T 4X2 STANDARD CAB AND EXT CAB DRW 9' AND 11' UTILITY BODY – Addendum One

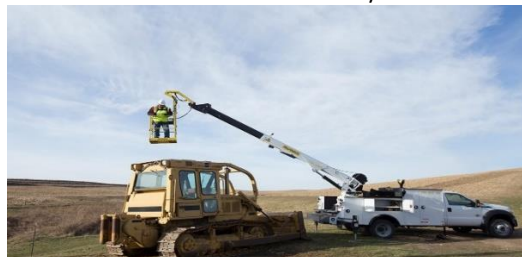
- Aluminum Barricade Rack: Mounted inside bed curbside.
- Aluminum Ladder Rack: Mounted StreetSide.
- Aluminum Poly Rack: Mounted StreetSide.
- Aluminum 65" Meter Rack:
- Aluminum 37" Meter Rack:
- Custom Interior Compartment Bins: Aluminum (See referenced vehicle for dimensions/layout).

OPTION G: GENERAL SPECIFICATION SECTIONS 1 through SECTIONS 17 AND THE FOLLOWING

- 1500 Watt PURE SIGN WAVE Power Inverter: Mounted inside RF bin to roof with breaker.
- Aluminum Ladder Rack: Mounted PS.
- JEA standard 5 gallon aluminum water keg holder (full circle aluminum). Mounted RR top of utility body. Include Igloo 5 gallon water keg.
- VISE: Wilton 6" mounted RR bumper.
- Aluminum Wash Tank with Ball Valve (5 Gallon): Mounted RR / top of bumper.

OPTION H: GENERAL SPECIFICATION SECTIONS 1 through SECTIONS 17 AND THE FOLLOWING

- 1500 Watt PURE SIGN WAVE Power Inverter: Mounted behind PS seat on bulk head with outlets facing DS.
- Aluminum Wash Tank with Ball Valve (5 Gallon): Mounted under stowed crane RR / top of utility body.
- JEA standard 5 gallon aluminum water keg holder (full circle aluminum). Mounted LF top of utility body. Include Igloo 5 gallon water keg.
- 7500 LB Capacity Crane: Full hydraulic (Chassis PTO), wireless remote controller, full hydraulic outriggers (Vertical & Horizontal Actuation), level indicators and alarm mounted RR utility body, 21 feet boom reach (STELLER Model 7621 or Equal).
- Aluminum 96 X 20 X 20 topside box with drip rail streetside with gas shocks.
- VISE: Wilton 6".
- Personnel Carrier Attachment: Stowable man lift / basket to attach to crane.



**SPECIFICATION, JEA CLASS 123: TRUCK 1 T 4X2 STANDARD CAB AND EXT CAB DRW 9' AND 11' UTILITY BODY
– Addendum One**

OPTION I: GENERAL SPECIFICATION SECTIONS 1 through SECTIONS 17 AND THE FOLLOWING

- 1500 Watt PURE SIGN WAVE Power Inverter: Mounted behind PS seat on bulk head with outlets facing DS.
- Aluminum Wash Tank with Ball Valve (5 Gallon): Mounted under stowed crane RR / top of utility body.
- JEA standard 5 gallon aluminum water keg holder (full circle aluminum). Mounted LF top of utility body. Include Igloo 5 gallon water keg.
- 7500 LB Capacity Crane: Full hydraulic (Chassis PTO), wireless remote controller, full hydraulic outriggers (Vertical & Horizontal Actuation), level indicators and alarm mounted RR utility body, 21 feet boom reach (STELLER Model 7621 or Equal).
- Aluminum 96 X 20 X 20 topside box with drip rail streetside with gas shocks.
- VISE: Wilton 6".
- 1600 LB Capacity Lift Gate: MAXON ME2 SERIES 49" X 27", ALUMINUM with Dual Hydraulic Cylinders and Remote Control Pendant.

OPTION J: GENERAL SPECIFICATION SECTIONS 1 through SECTIONS 17 AND THE FOLLOWING

- 1500 Watt PURE SIGN WAVE Power Inverter: Mounted inside RF bin to roof with breaker
- Aluminum Ladder Rack: Mounted PS
- JEA standard 5 gallon aluminum water keg holder (full circle aluminum). Mounted RR top of utility body. Include Igloo 5 gallon water keg.
- Aluminum Wash Tank with Ball Valve (5 Gallon): Mounted RR / top of bumper
- Aluminum Shovel Rack (10" Wide Version): Mount RR inside utility bed
- Aluminum Key Rack: Mounted inside RR utility body (Upgraded Design)
- 1600 LB Capacity Lift Gate: MAXON ME2 SERIES 49" X 27", ALUMINUM with Dual Hydraulic Cylinders and Remote Control Pendant.

OPTION K: GENERAL SPECIFICATION SECTIONS 1 through SECTIONS 17 AND THE FOLLOWING

- 1500 Watt PURE SIGN WAVE Power Inverter: Mounted inside RF bin to roof with breaker
- Aluminum Ladder Rack: Mounted PS
- JEA standard 5 gallon aluminum water keg holder (full circle aluminum). Mounted RR top of utility body. Include Igloo 5 gallon water keg.
- Expanded Metal Bin: 21.5"W X 36"L X 15"H
- Aluminum Tool Box: 36"W X 24"H X 20" mounted in the bed, front side
- VISE: Wilton 6" mounted RR bumper

SPECIFICATION, JEA CLASS 123: TRUCK 1 T 4X2 STANDARD CAB AND EXT CAB DRW 9' AND 11' UTILITY BODY – Addendum One

- Aluminum Wash Tank with Ball Valve (5 Gallon): Mounted RR / top of bumper
- SPITZLIFT CRANE (Mount right rear of body): Compact SPITZLIFT Aluminum, Collapsible/Stowable/Removable, 350LB Capacity (MODEL # LSEQRT10-3M/H).

Double Corner Mount - DC Powered Mount



This mount system is designed and engineered for service trucks in which field service technicians need a lower position for the crane in order to access parking garages. Both mount positions have full lifting capacity.

Call to speak with a SpitzLift application expert or get a quote.

Request a Quote | (619) 713-5061

Custom Lift Request

OPTION L: GENERAL SPECIFICATION SECTIONS 1 through SECTIONS 17 AND THE FOLLOWING

- 1500 Watt PURE SIGN WAVE Power Inverter: Mounted inside RF bin to roof with breaker.
- Aluminum Ladder Rack: Mounted PS.
- JEA standard 5 gallon aluminum water keg holder (full circle aluminum). Mounted RR top of utility body. Include Igloo 5 gallon water keg.
- Aluminum Wash Tank with Ball Valve (5 Gallon): Mounted RR / top of bumper.
- 1600 LB Capacity Lift Gate: MAXON ME2 SERIES 49" X 27", ALUMINUM with Dual Hydraulic Cylinders and Remote Control Pendant.

NOTE: All units, attachments, products and services must meet and comply with all applicable regulations and specifications including but not limited to Federal and State Laws, OSHA Regulations, ANSI Standards, DOT Regulations and ASTM Standards. All units must be delivered to the JEA Fleet Facility with a minimum $\frac{3}{4}$ tank of fuel. Contact Thurman McGlothlin at 904-576-9382 48 hours prior to delivery. Delivery times are Monday through Friday 07:00 AM – 03:00 PM at 5717 New Kings Road Jacksonville Florida, 32209.