



JEA Engineering and Contractor Workshop

January 11, 2011

Agenda

- Welcome and Safety Briefing
 - Greg Perrine, Vice President Facilities & Logistics Services
- New Procurement Process for JEA's Water, Sewer & Environmental Services Engineering Work - Greg Perrine
- Changes to “Locate” Statute
 - Kris Rosenhauer, Director Standards & Utility Services
- ECS Project Work Review
 - Robert Kermitz, Director Projects
- Recent & Proposed Changes Affecting the Development Community - Robert Kermitz
- Closing - Greg Perrine

New Procurement Process for JEA's Water, Sewer & Environmental Services Engineering Work

- Since last Workshop ...
 - 16 Qualified Proposers List (QPL) Categories established and posted on jea.com,
 - ~ 20 – 30 firms have been approved per QPL Category
 - First opportunity for new process went well
 - River Oaks Project ... RFP published 11/8, received 4 proposals, Award made 12/16; cycle time ~ 6 weeks.
 - Positive feedback from Public Scoring Approval Meeting
 - 2nd RFP for Normandy Blvd published 11/17
 - JEA received 19 proposals on 12/7, evaluating through holidays
- < \$35K process will be formalized by 1/31/11
 - Coincides with expiration of GSA for Small Eng Firms

JEA Locate Process Overview

In 2005, JEA began locating all UG infrastructure in house. The group consists of 20 employees and performed over 117,000 locates in FY10.

Discussion:

- How JEA receives and processes locate requests
- Tools used
- Locate documentation



Ticket Management:



Ticket: FL241709123 **Description:** locate
State: FL **County:** DUVAL
Place: JACKSONVILLE **Address:** 5247 LEXINGTON AVE

Status: Closed **Type:** Routine
Customers: ELECTRIC, SEWER, WATER

Address: 5247 LEXINGTON AVE
 Cross 1: RETAV ST
 Within 1/4 mile: Y

Remarks: *** LOOKUP BY ADDRESS ***

Work date: 09/03/07 **Time:** 06:59ET **Hrs note:** 057 **Category:** 3 **Duration:** 30 DAYS
Due Date: 08/31/07 **Time:** 23:59ET **Exp Date:** 09/28/07 **Time:** 23:59ET
Work type: RESURFACE ROADSIDE DITCHES **Boxing:** N **Water-lined:** N
Up/Ob/Both: Y **Machinery:** Y **Depth:** 4FT **Permits:** N N/A
Done for: CITY OF JACKSONVILLE

Company: CITY OF JACKSONVILLE STREETS & HIGHWAY **Type:** COMT
Co addr: 2637 N 1ST ST
City: JACKSONVILLE **State:** FL **Zip:** 32254
Caller: BRUCE GILLIS **Phone:** 904-387-8640
BestTime: 7AM-5:30PM

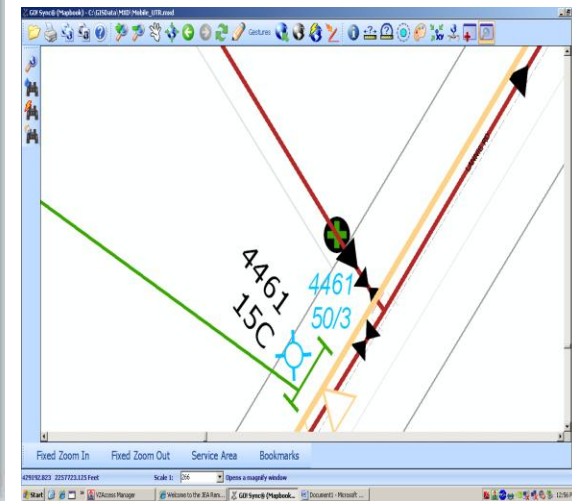
Submitted: 08/29/07 14:49ET **Oper:** BRU Chan: WEB
Hrs: OCT903 JE1359 JEA JEA773 PGSJAX SBF17 IS1104

Date	Time	Screenor	Description
08/30/07	15:24:10	JEAJCE	View locate
08/30/07	15:24:10	JEAJCE	View locate

Ticket History (All times Eastern)

Date	Time	Screenor	Remark
08/29/07	14:52:19	DigTrack	Ticket received from the One Call Center.
08/29/07	14:52:19	DigTrack	Ticket assigned to JEAJCE [Creel] for 08/29/2007
08/29/07	14:54:23	jeacree	Ticket Downloaded to Field Unit
08/30/07	08:09:45	JEA001	Ticket Reassigned to JEAJCE
08/30/07	15:22:40	JEAJCE	Ticket completed for ELECTRIC on 08/30/2007 at 15:22 by JEAJCE. Close code 5-No Conflict -Outside Work Site. Area was not marked.
08/30/07	15:22:48	JEAJCE	Ticket completed for SEWER on 08/30/2007 at 15:22 by JEAJCE. Close code 1-Marked Area was painted.
08/30/07	15:22:57	JEAJCE	Ticket completed for WATER on 08/30/2007 at 15:22 by JEAJCE. Close code 1-Marked Area was painted.
08/30/07	15:25:35	DigTrack	Positive response to One Call Center successful

Tools:





Recent Changes to Chapter 556, Florida Statutes (Effective 10/1/10)

556.107 Violations

- s. 556.107(1)(c) Raises the minimum fine from \$250 to \$500 for all citable Chapter 556, F.S. violations.

Impact

- Potential increase in citations written.
- Higher penalty helps local governments recover associated enforcement costs.
- Greater compliance with the law.

556.107 Violations

s.556.107(1)(a)6 and s.556.109(2)

- Creates a non-criminal violation for requesting emergency locate tickets for non-emergency situations.

Impact

- The only time an emergency ticket is to be requested is when there is an emergency. Not wanting to wait two full business days for marking is not an emergency.

556.107 Violations

Emergency situation defined

- Clear & present danger to life or property.
- Leaking substance.
- Vital public service/communication interruption.
- Public roads/utilities impairment that requires immediate repair.

556.114 Low-impact marking practices

s.556.114 (1), (2), (3) and (4) Establishes low impact marking practices for excavators and member operators.

556.114 Low-impact marking practices

Excavator Low Impact Marking Guidelines

1. Locate ticket requests should cover only those portions of a job site where digging will occur within 30 calendar days of the date the ticket is requested.

556.114 Low-impact marking practices

Excavator Low Impact Marking Guidelines

2. When renewing tickets for jobs lasting longer than 30 calendar days, identify only the areas where excavation will occur (i.e. eliminate any areas where digging is complete).

556.114 Low-impact marking practices

Excavator Low Impact Marking Guidelines

3. Difficult-to-explain dig sites should be pre-marked if the excavator and member have not mutually agreed otherwise.

556.114 Low-impact marking practices

Impact

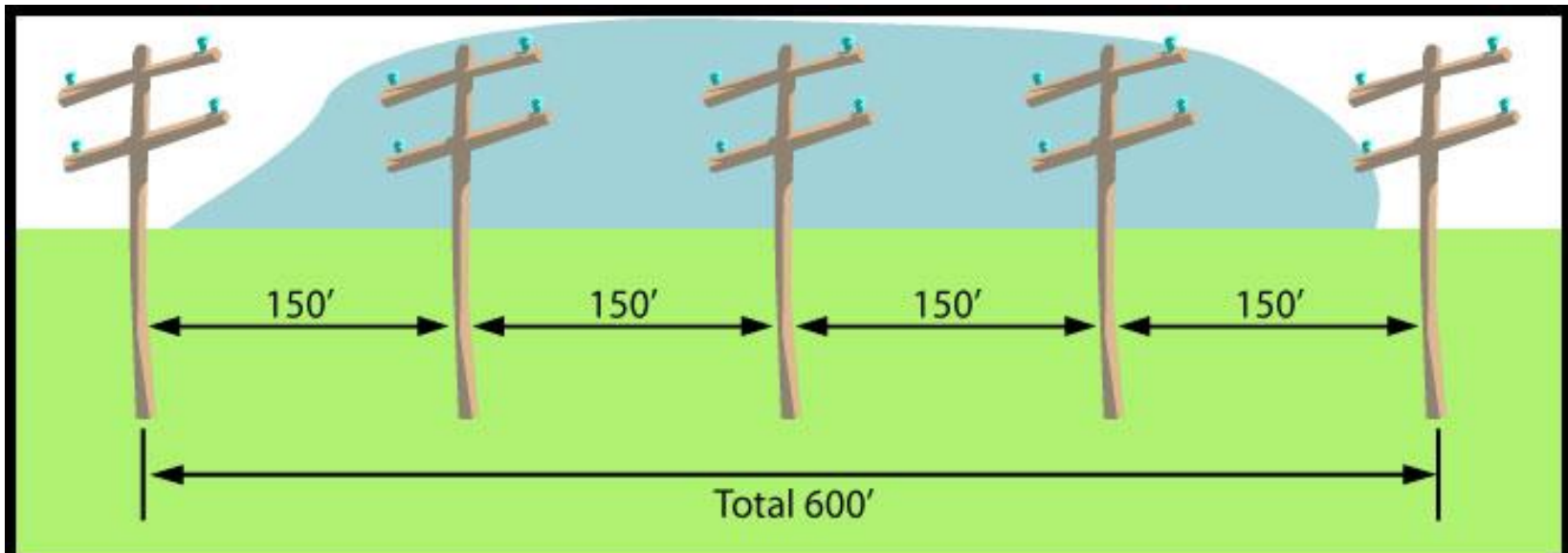
- Excavators will need to plan ahead and determine how much excavation can be done within the 30-day ticket life.
- Simply renewing a locate ticket will not suffice any longer. Excavators who use office staff to renew tickets may need to change procedures.
- Tell staff what's completed
 - Tell staff when a job is complete

556.114 Low-impact marking practices

Impact

- Reduced time spent locating at a job site.
- The 500-foot limitation for pre-marking a job site has been eliminated.

556.114 Low-impact marking practices



Under the old law, pre-marking would not be required because the area is greater than 500 feet. Under the new law, you must be able to give a clear locate description or reach some other mutual agreement with the member, when the locate is complicated. If not, a member may ask you to pre-mark around the poles, thus delaying your start date.



For complete text of the law, visit
www.callsunshine.com



Finally, when damages do occur they can be very expensive and cause extended outages to our customers...so please call before you dig. It's not only for your own safety...it's the law.

ECS Project Work Review

- Specific Work to Bid Second Quarter FY11 and 3rd/4th Quarter FY11
- Total Water Management Plan (TWMP) Project Update

Bid Activity

01/01/11 – 03/30/11

Electric

- Plants:
 - Liquid fuel storage at Greenland Energy Center (Engineering) \$250K
 - Kennedy Generating Station Intake Structure Demolition \$800K

Bid Activity

04/01/11 – 09/30/11

Electric

- Substations/Transmission:

- Duval to Jacksonville Heights 230 kv Circuit Addition \$3.5M
- Firestone Autotransformer Addition \$450K

- Plants:

- Northside Units 1 & 2 Intrex Tube Replacement (Fall, 2011 Outage) \$3.7M
- Northside Units 1 & 2 Boiler Tube Surface Restoration (Fall, Outage 2011) \$4.0M

- Miscellaneous:

- Plaza III Parking Garage Concrete Restoration \$2.2M

Water & Sewer

- Plants:
 - Buckman WWTP Biosolids Processing System Expansion – 3rd Biosolids Digester \$9.2M
 - Corona Rd WTP Rehabilitation \$280K
 - River Oaks WTP Reservoir Rehabilitation \$1.1M
 - Main St WTP – Orange St Reservoir Rehabilitation (Design/Build) \$7.0M

Bid Activity

01/01/11 – 03/30/11

Water & Sewer

- Grid:

- Royal Lakes Master Pump Station \$1.7M
- Royal Lakes Phase 1 \$1.8M
- Royal Lakes Phase 2 \$610K
- Carder St. FM Replacement (Engineering) \$100K
- Riverside Ave. WM Rehab (Engineering) \$250K
- Nassau FM: Phase 1 – Amelia Concourse to Lofton Creek \$2.5M
- Nassau FM: Phase 2 – Lofton Creek to Wetlands \$900K
- Nassau FM: Phase 3 – Wetlands to Harts Road \$1.6M
- Kenyon Street Sewer Park to 68th \$417K
- Day Av – College St to Phyllis Force Main \$613K
- Division St – Webster St to 3rd St \$1.M
- CR-210 Twin Creeks MPS to Russell Sampson Rd \$3.M

Bid Activity

04/01/11 – 9/30/11

Water & Sewer

- **Plants:**

- Buckman WWTP BNR - Phase I \$10.5M
- Bradley Rd Lift Station Ventilation Improvements \$450K
- Talleyrand Lift Station Ventilation Improvements \$500K

Water & Sewer

- Grid:

- Kingsbury Master Pump Station \$1.6M
- Ortega Hills FM Replacement \$160K
- University Blvd. WM Replacement \$500K
- TWMP: Segments 1, 3,4,5,6 (Engineering) \$1.5M
- TWMP: Segment 2 – (Design/Build) \$15M
- Royal Lakes Phase Out: JTB FM Replacement (Design/Build) \$1.5M
- Ponte Vedra WM Replacement \$400K
- Normandy Blvd.: WM Replacement \$800K
- Melvin St. WM Replacement \$700K

TWMP Water Line Project

- \$35M Project, March 2013 in service date. Project pipeline routing includes St. Johns River crossing and 5 other pipeline Segments:
 - Design-Bid-Build Methodology
 - Segment 1: 36 inch Pipeline from Tie-in on Franklin St. to River Entry of HDD
 - Segment 3: 36 inch Pipeline from River Exit to Arlington WTP
 - Segment 4: 30 inch Pipeline from Arlington WTP to Arlington Expressway near Bert Rd
 - Segment 5: 30 inch Pipeline from Arlington Expressway near Bert Rd. to Southside Blvd at Bradley Rd
 - Segment 6: 24 inch Pipeline from Southside Blvd at Bradley Rd. to Cortez Rd
 - Design-Build Methodology
 - Segment 2: 36 inch Pipeline under St. Johns River near Matthews Bridge

TWMP Water Line Project

- Program Management Services RFP Scope includes PM/CM, cost/schedule, outreach, inspection and technical engineering services.
 - Second Phase Presentations complete
 - Currently negotiating with CH2MHill
 - Targeting Award of Contract in mid-January, 2011
- Segment Design RFPs targeted for March/Apr. 2011
- Design/Build RFP targeted for May 2011

Developers & Engineers

- Recap of 2009/2010 Improvements
 - Water and Sewer Pre-Design Meetings
 - Dedication required of all infrastructure
 - Water and Sewer As-built drawings
 - Must contain easement and O/R document numbers
 - Payment of all applicable W/S connection fees prior to service
 - Mylars no longer required for W/S as-built approval

Developers & Engineers

- Recap of 2009/2010 Improvements (cont.)
 - Review and approval by JEA Real Estate prior to recording an easement
 - Recording of easements prior to service
 - Required Project Documents
 - Agent of Letter Authorization
 - Ownership and Easement Report/Opinion of Title
 - Division of Corporation/Sunbiz
 - Approved Addressing

Developers & Engineers

- What's Planned for 2011
 - Updates to jea.com documents
 - Water and Sewer Design Guidelines
 - Water and Sewer Inspection Guidelines
 - Water and Sewer Rules and Regulations
 - Project Acceptance Documents
 - To be added jea.com documents/tools
 - Real Estate email box
 - Electric Conduit Design Guidelines
 - Specifications for Digital Files

Developers & Engineers

- What's Planned for 2011 (cont.)
 - Project Documents submittal prior to scheduling JEA Final Inspection
 - Addresses notated on Water and Sewer Plans
 - Communication of proposed W/S fees based on approved plans
 - E-Plan Review and Project Status Tracking
 - Water/Sewer and Electric

Closing

- Next meeting in approximately 3 months
 - Will continue until no longer desired
- Contact information
 - Jon Eckenbach – eckejp@jea.com – 904-665-7895
 - Greg Perrine – perrgl@jea.com – 904-665-7952
- Questions???