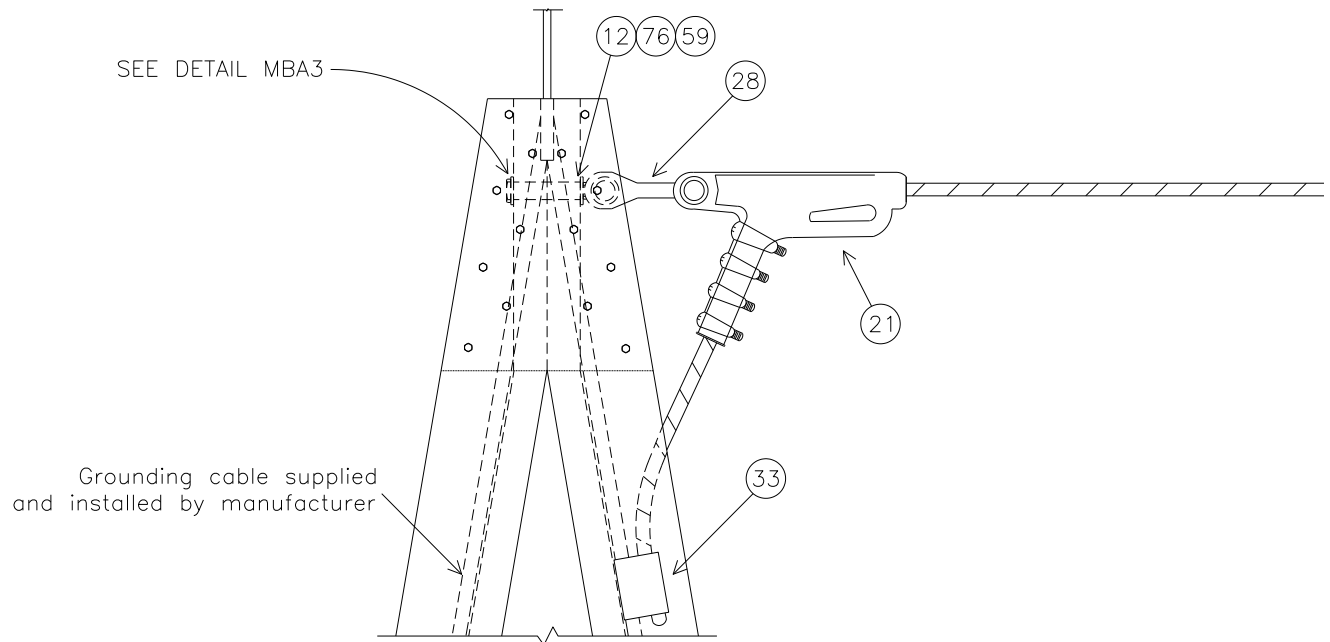


SHIELD PLATE INDEX

	PAGE
A-FRAME AND LATTICE STRUCTURES FOR SUBSTATIONS	
1. SASI: SINGLE IN-LINE FOR SUBSTATION STRUCTURES	SH-2
SPUN CONCRETE POLES	
2. SSBAB: BAYONET WITH ANGLE CLAMP, BOTTOM GUY	SH-3
3. SSBAB: BAYONET WITH ANGLE CLAMP, FRONT GUY	SH-4
4. SSBABN: BAYONET WITH ANGLE CLAMP, NO GUY	SH-5
5. SSBAN: BAYONET WITH ANGLE CLAMP, NO GUY	SH-6
6. SSBAN: BAYONET WITH SUSPENSION CLAMP, NO GUY	SH-7
7. SSDD: DOUBLE DAVIT ARM	SH-8
8. SSDEX: DEAD END EXTENSION	SH-9
9. SSDI90DG: DOUBLE IN-LINE 90°, DOUBLE GUY	SH-10
10. SSDI90SG: DOUBLE IN-LINE 90°, SINGLE GUY	SH-11
11. SSDI135SG: DOUBLE IN-LINE 135°, SINGLE GUY	SH-12
12. SSDI180: DOUBLE IN-LINE 180°	SH-13
13. SSDI180G: DOUBLE IN-LINE 180°, GUY	SH-14
14. SSSDG: SINGLE DAVIT ARM, GUY	SH-15
15. SSSDN: SINGLE DAVIT ARM, NO GUY	SH-16
16. SSSIG: SINGLE IN-LINE, GUY	SH-17
17. SSSIN: SINGLE IN-LINE, NO GUY	SH-18
18. SSS90: SPLIT SHIELD	SH-19
WOOD POLES	
19. SWBAB: BAYONET WITH ANGLE CLAMP, BOTTOM GUY	SH-21
20. SWBAF: BAYONET WITH ANGLE CLAMP, FRONT GUY	SH-22
21. SWBSN: BAYONET WITH SUSPENSION CLAMP, NO GUY	SH-23
22. SWDI90DG: DOUBLE IN-LINE 90°, DOUBLE GUY	SH-24
23. SWDI150: DOUBLE IN-LINE 150°	SH-25
24. SWHS: HORIZONTAL SUSPENSION	SH-26
25. SWSIG: SINGLE IN-LINE GUYED	SH-27
26. SW2PH90: 2 POLE, H-FRAME, 90°	SH-28
27. SW2PH135: 2 POLE, H-FRAME, 135°	SH-29

SASI

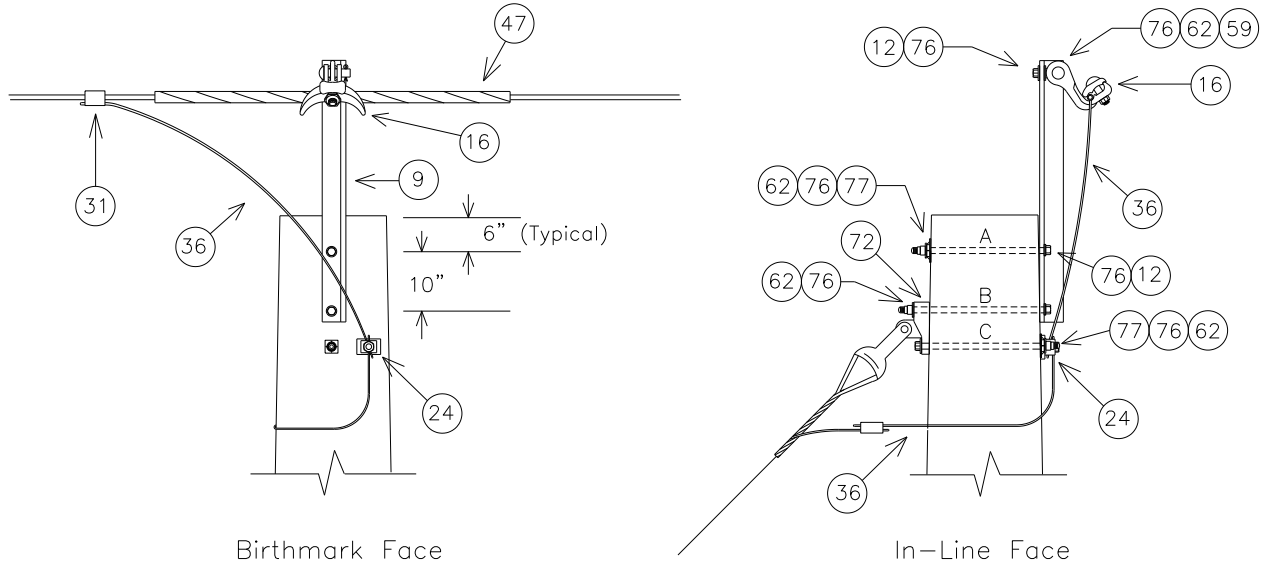
SHIELD FOR A-FRAME/LATTICE STRUCTURES SINGLE IN-LINE



NO.	ITEM ID	QTY	DESCRIPTION
12	BOLMS 016	2	MACHINE BOLT, 5/8" X 3", SQUARE HEAD, GALVANIZED, WITH SQUARE NUT ATTACHED
21	CLAQD 008	2	DEADEND CLAMP (.2 - .55") 19,000# STRENGTH, GAP = 7/8", PIN = 5/8" CLAMP, DUCT. IRON, 3#6 AW
28	CLETE 001	2	TOWER Y-EYE CLEVIS, 3/4" PIN, 5/8" EYE THICKNESS, 11/16" EYE DIAMETER H.D.G.
33	CNNPA 590	2	TWO BOLT PARALLEL CONNECTOR
59	NUTEY 002	2	EYE NUT FOR 5/8" BOLT, 1 1/2" OPENING, H.D.G.
76	WASRD 004	4	ROUND WASHER FOR 5/8" BOLT, 1 3/4" DIAMETER, GALVANIZED

SSBAB

SHIELD FOR SPUN CONCRETE POLES BAYONET WITH ANGLE CLAMP, BOTTOM GUY



NOTE: SEE MBA1 FOR BOLT ASSEMBLY DETAILS

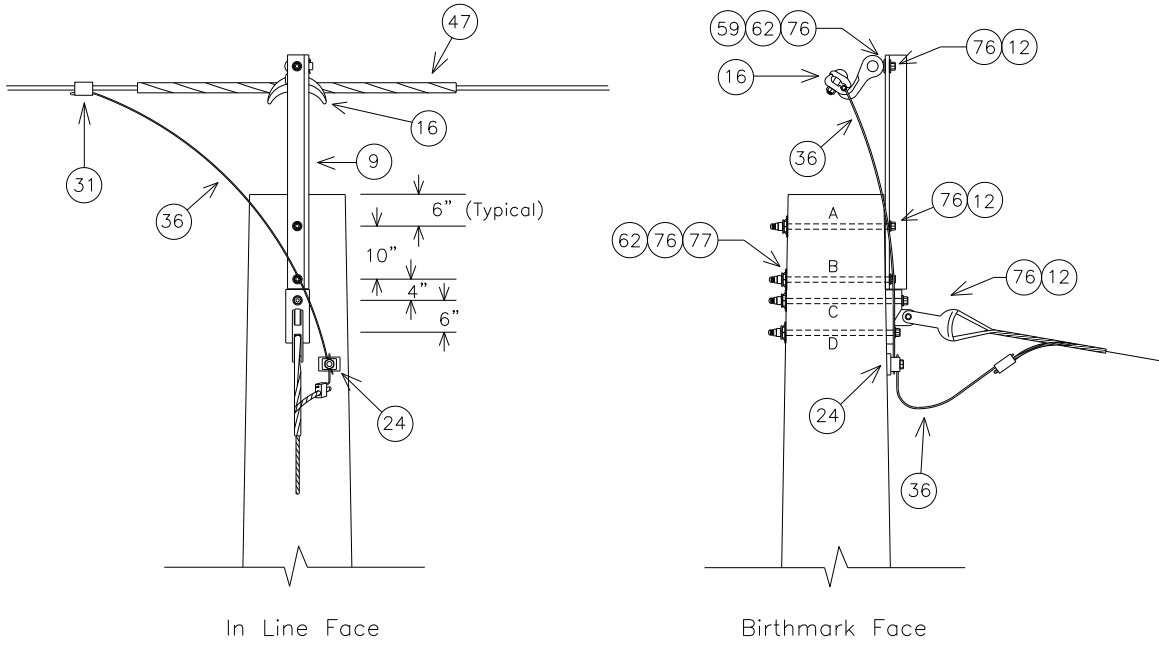
MINIMUM REQUIRED BOLT LENGTH 'A' (INCHES)	19.6
MINIMUM REQUIRED BOLT LENGTH 'B' (INCHES)	20.9
MINIMUM REQUIRED BOLT LENGTH 'C' (INCHES)	20.3

NOTE: BOLT CALCULATIONS ASSUME A 17" POLE TOP DIAMETER

NO.	ITEM ID	QTY	DESCRIPTION
9	BAYSW 003	1	BAYONET FOR SHIELD WIRE, CORNER 40"
12	BOLMS 032	1	MACHINE BOLT, 3/4" X 6", SQUARE HEAD, GALVANIZED, WITH SQUARE NUT ATTACHED
12	BOLMS 039	1	MACHINE BOLT, 3/4" X 20", SQUARE HEAD, GALVANIZED, WITH SQUARE NUT ATTACHED
12	BOLMS 040	2	MACHINE BOLT, 3/4" X 22", SQUARE HEAD, GALVANIZED, WITH SQUARE NUT ATTACHED
16	CLAA 001	1	ANGLE CLAMP FOR 4-SOL - 250MCM, 7000#
24	CLATG 001	1	CLAMP, TRANSFORMER TANK GROUND, "BRONZE" #6 SOL - #1 STR.
31	CNNCP 002	1	COMPRESSION CONNECTOR, TYPE H, (3#6 AW) TO (#4 CU); (.258 - .420) TO (.162 - .332), ALUMINUM
36	COBCO 028	6 ft	#4 SOLID BARE COPPER CONDUCTOR, SOFT DRAWN (50# COIL)
47	GUALI 001	1	ALUMINUM LINE GUARD FOR 3#6AW, 23" LG, RANGE .347" - 366"
59	NUTEY 003	1	NUT EYE FOR 3/4" BOLT
62	NUTSL 004	4	SQUARE LOCK NUT FOR 3/4" BOLT, H.D.G.
72	TEEDE 003	1	TEE, DUCTILE IRON, H.D.G. 6" HOLE SPACING, STRENGTH = 60,000#
76	WASRD 005	8	ROUND WASHER FOR 3/4" BOLT, 2" DIAMETER, GALVANIZED
77	WASSC 001	2	SQUARE CURVED WASHER FOR 5/8" BOLTS, RIBBED MALLEABLE IRON-GALVANIZED, 4" X 4"

SSBAF

SHIELD FOR SPUN CONCRETE POLES BAYONET WITH ANGLE CLAMP, FRONT GUY



NOTE: SEE MBA1 FOR BOLT ASSEMBLY DETAILS

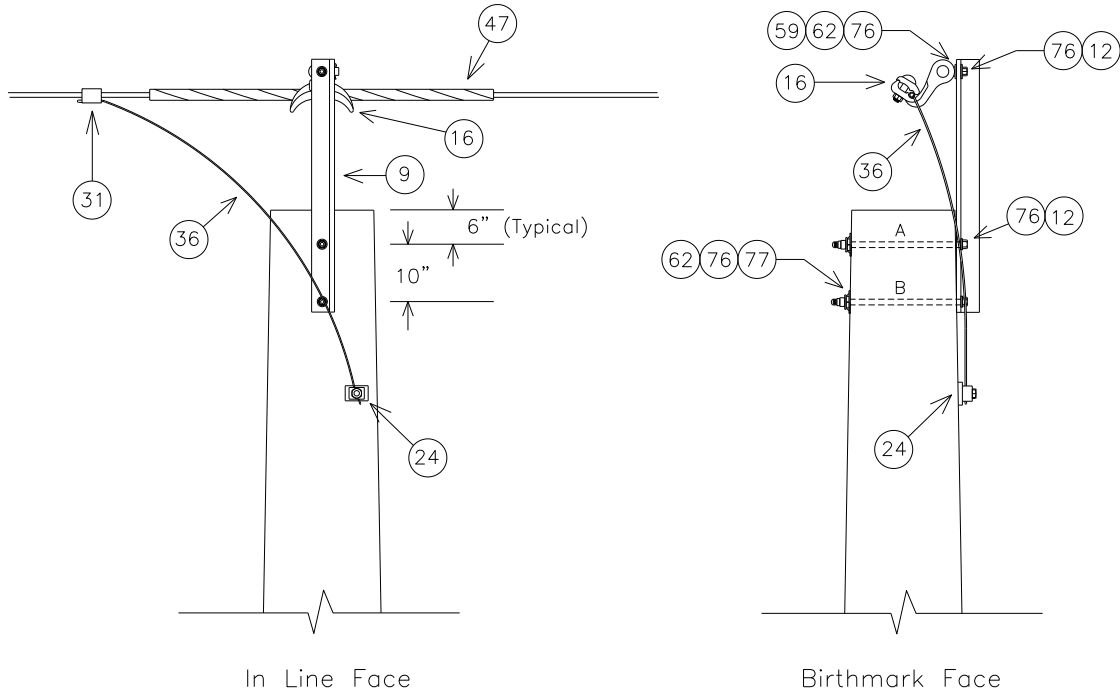
	'A'	'B'	'C'	'D'
MINIMUM REQUIRED BOLT LENGTH (INCHES)	19.6	19.8	21.7	20.8

NOTE: BOLT CALCULATIONS ASSUME A 17" POLE TOP DIAMETER;
USE 3/4" BOLTS FOR A&B AND 7/8" BOLTS FOR C&D

NO.	ITEM ID	QTY	DESCRIPTION
9	BAYSW 003	1	BAYONET FOR SHIELD WIRE, CORNER 40"
12	BOLMS 032	1	MACHINE BOLT, 3/4" X 6", SQUARE HEAD, GALVANIZED, WITH SQUARE NUT ATTACHED
12	BOLMS 039	2	MACHINE BOLT, 3/4" X 20", SQUARE HEAD, GALVANIZED, WITH SQUARE NUT ATTACHED
12	BOLMS 052	2	MACHINE BOLT, 7/8" X 22", SQUARE HEAD, GALVANIZED, WITH SQUARE NUT ATTACHED
16	CLAN 001	1	ANGLE CLAMP FOR 4-SOL - 250MCM, 7000#
24	CLATG 001	1	CLAMP, TRANSFORMER TANK GROUND, "BRONZE" #6 SOL - #1 STR.
31	CNNCP 002	1	COMPRESSION CONNECTOR, TYPE H, (3#6 AW) TO (#4 CU); (.258 - .420) TO (.162 - .332), ALUMINUM
36	COBCO 028	6 ft	#4 SOLID BARE COPPER CONDUCTOR, SOFT DRAWN (50# COIL)
47	GUALI 001	1	ALUMINUM LINE GUARD FOR 3#6AW, 23" LG, RANGE .347" - 366"
59	NUTEY 003	1	NUT EYE FOR 3/4" BOLT
62	NUTSL 004	3	SQUARE LOCK NUT FOR 3/4" BOLT, H.D.G.
62	NUTSL 005	2	SQUARE LOCK NUT FOR 7/8" BOLT, H.D.G.
72	TEEDE 003	1	TEE, A36 STEEL, H.D.G. 6" HOLE SPACING, 13/16" BOLT HOLE DIA., 1 1/4" HOLE ATTACHMENT
76	WASRD 005	6	ROUND WASHER FOR 3/4" BOLT, 2" DIAMETER, GALVANIZED
76	WASRD 006	4	ROUND WASHER FOR 7/8" BOLT, 2" DIAMETER, GALVANIZED
77	WASSC 001	2	SQUARE CURVED WASHER FOR 3/4" BOLTS, RIBBED MALLEABLE IRON-GALVANIZED, 4" X 4"
77	WASSC 002	2	SQUARE CURVED WASHER FOR 7/8" BOLTS, RIBBED MALLEABLE IRON-GALVANIZED, 4" X 4"

SSBAFN

SHIELD FOR SPUN CONCRETE POLES
BAYONET WITH ANGLE CLAMP, NO GUY



NOTE: SEE MBA1 FOR BOLT ASSEMBLY DETAILS

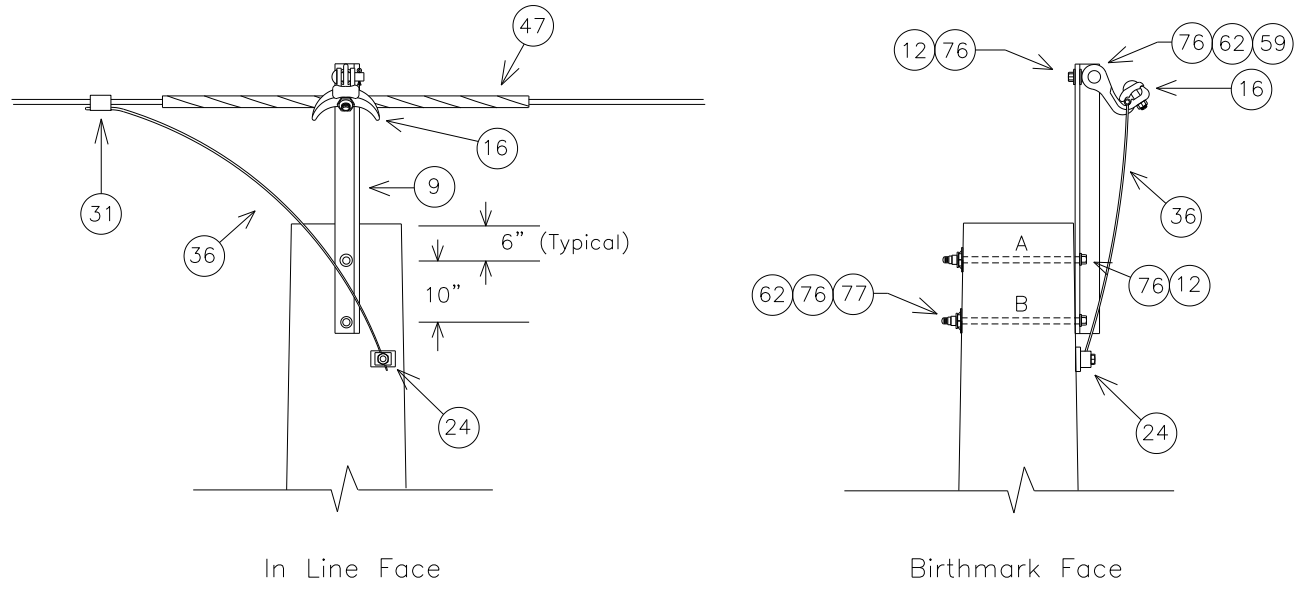
	'A'	'B'
MINIMUM REQUIRED BOLT LENGTH (INCHES)	19.6	19.8

NOTE: BOLT CALCULATIONS ASSUME A 17 INCH POLE TOP DIAMETER;

NO.	ITEM ID	QTY	DESCRIPTION
9	BAYSW 003	1	BAYONET FOR SHIELD WIRE, CORNER 40"
12	BOLMS 032	1	MACHINE BOLT, 3/4" X 6", SQUARE HEAD, GALVANIZED, WITH SQUARE NUT ATTACHED
12	BOLMS 039	2	MACHINE BOLT, 3/4" X 20", SQUARE HEAD, GALVANIZED, WITH SQUARE NUT ATTACHED
16	CLAA 001	1	ANGLE CLAMP FOR 4-SOL - 250MCM, 7000#
24	CLATG 001	1	CLAMP, TRANSFORMER TANK GROUND, "BRONZE" #6 SOL - #1 STR.
31	CNNCP 002	1	COMPRESSION CONNECTOR, TYPE H, (3#6 AW) TO (#4 CU); (.258 - .420) TO (.162 - .332), ALUMINUM
36	COBCO 028	6 ft	#4 SOLID BARE COPPER CONDUCTOR, SOFT DRAWN (50# COIL)
47	GUALI 001	1	ALUMINUM LINE GUARD FOR 3#6AW, 23" LG, RANGE .347" - 366"
59	NUTEY 003	1	NUT EYE FOR 3/4" BOLT
62	NUTSL 004	3	SQUARE LOCK NUT FOR 3/4" BOLT, HOT DIPPED GALVANIZED
76	WASRD 005	6	ROUND WASHER FOR 3/4" BOLT, 2" DIAMETER, GALVANIZED
77	WASSC 001	2	SQUARE CURVED WASHER FOR 3/4" BOLTS, RIBBED MALLEABLE IRON-GALVANIZED, 4" X 4"

SSBAN

SHIELD FOR SPUN CONCRETE POLES
BAYONET WITH ANGLE CLAMP, NO GUY



NOTE: SEE MBA1 FOR BOLT ASSEMBLY DETAILS

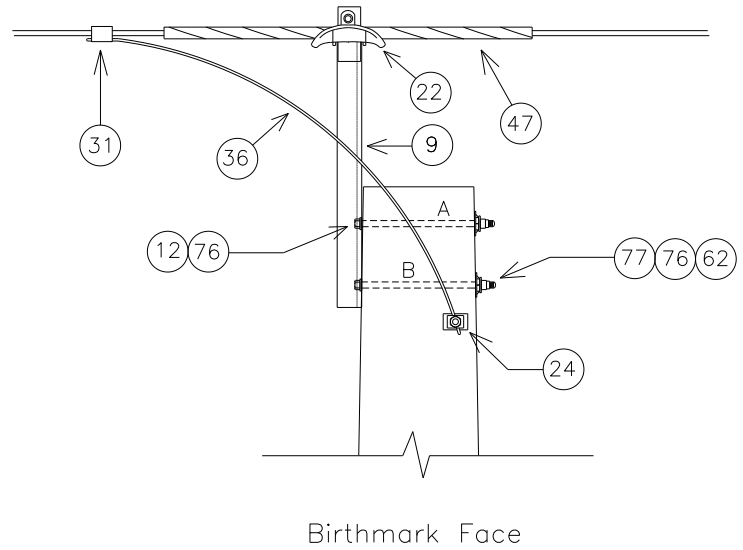
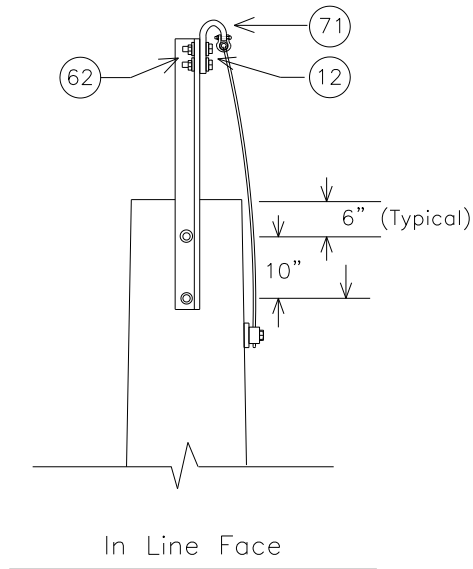
MINIMUM REQUIRED BOLT LENGTH 'A' (INCHES)	19.6
MINIMUM REQUIRED BOLT LENGTH 'B' (INCHES)	19.8

NOTE: BOLT CALCULATIONS ASSUME A 17" POLE TOP DIAMETER

NO.	ITEM ID	QTY	DESCRIPTION
9	BAYSW 003	1	BAYONET FOR SHIELD WIRE, CORNER 40"
12	BOLMS 032	1	MACHINE BOLT, 3/4" X 6", SQUARE HEAD, GALVANIZED, WITH SQUARE NUT ATTACHED
12	BOLMS 039	2	MACHINE BOLT, 3/4" X 20", SQUARE HEAD, GALVANIZED, WITH SQUARE NUT ATTACHED
16	CLAA001	1	ANGLE CLAMP FOR 4-SOL - 250MCM, 7000#
24	CLATG 001	1	CLAMP, TRANSFORMER TANK GROUND, "BRONZE" #6 SOL - #1 STR.
31	CNNCP 002	1	COMPRESSION CONNECTOR, TYPE H, (3#6 AW) TO (#4 CU); (.258 - .420) TO (.162 - .332), ALUMINUM
36	COBCO 028	6 ft	#4 SOLID BARE COPPER CONDUCTOR, SOFT DRAWN (50# COIL)
47	GUALI 001	1	ALUMINUM LINE GUARD FOR 3#6AW, 23" LG, RANGE .347" - 366"
59	NUTEY 003	1	NUT EYE FOR 3/4" BOLT
62	NUTSL 004	3	SQUARE LOCK NUT FOR 3/4" BOLT, H.D.G.
76	WASRD 005	6	ROUND WASHER FOR 3/4" BOLT, 2" DIAMETER, GALVANIZED
77	WASSC 001	2	SQUARE CURVED WASHER FOR 3/4" BOLTS, RIBBED MALLEABLE IRON-GALVANIZED, 4" X 4"

SSBSN

SHIELD FOR SPUN CONCRETE POLES
BAYONET WITH SUSPENSION CLAMP, NO GUY



NOTE: SEE MBA1 FOR BOLT ASSEMBLY DETAILS

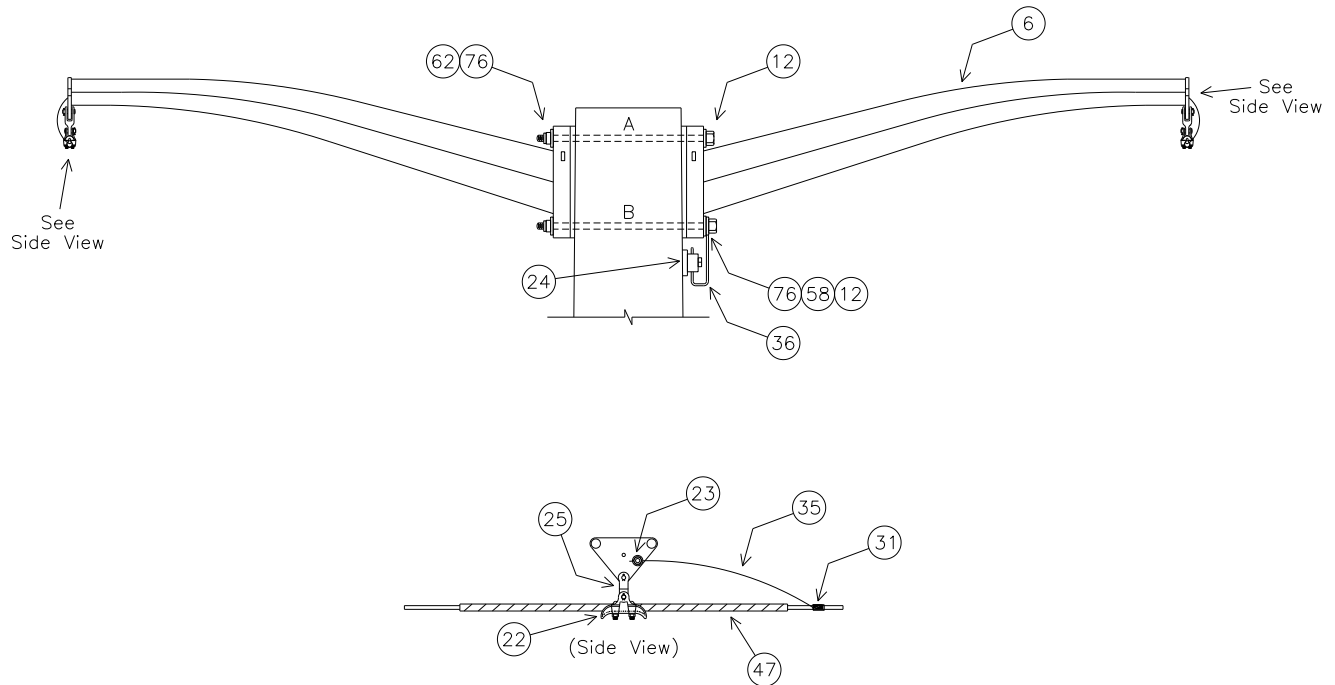
MINIMUM REQUIRED BOLT LENGTH 'A' (INCHES)	19.6
MINIMUM REQUIRED BOLT LENGTH 'B' (INCHES)	19.8

NOTE: BOLT CALCULATIONS ASSUME A 17" POLE TOP DIAMETER

NO	ITEM ID	QTY	DESCRIPTION
9	BAYSW 004	1	BAYONET FOR SHIELD WIRE, STRAIGHT 40"
12	BOLMS 001	0	MACHINE BOLT, 1/2" X 2 1/2", PROVIDED WITH SUPSH001
12	BOLMS 039	2	MACHINE BOLT, 3/4" X 20", SQUARE HEAD, GALVANIZED, WITH SQUARE NUT ATTACHED
22	CLASU 001	1	ALUMINUM SUSPENSION CLAMP FOR 3#6AW / 7#10AW, 15000#
24	CLATG 001	1	CLAMP, TRANSFORMER TANK GROUND, "BRONZE" #6 SOL - #1 STR.
31	CNNCP 002	1	COMPRESSION CONNECTOR, TYPE H, (3#6 AW) TO (#4 CU); (.258 - .420) TO (.162 - .332), ALUMINUM
36	COBCO 028	6 ft	#4 SOLID BARE COPPER CONDUCTOR, SOFT DRAWN (50# COIL)
47	GUALI 001	1	ALUMINUM LINE GUARD FOR 3#6AW, 23" LG, RANGE .347" - 366"
62	NUTSL 002	0	SQUARE LOCK NUT FOR 1/2" BOLT, PROVIDED WITH SUPSH001
62	NUTSL 004	2	SQUARE LOCK NUT FOR 3/4" BOLT, H.D.G.
71	SUPSH 001	1	SUPPORT, SHIELD WIRE, GALVANIZED, WITH TWO 2 1/2" MACHINE BOLTS AND LOCK NUTS
76	WASRD 005	4	ROUND WASHER FOR 3/4" BOLT, 1 3/4" DIAMETER, GALVANIZED
77	WASSC 001	2	SQUARE CURVED WASHER FOR 3/4" BOLTS, RIBBED MALLEABLE IRON-GALVANIZED, 4" X 4"

SSDD

SHIELD FOR SPUN CONCRETE POLES DOUBLE DAVIT ARM



NOTE: SEE MBA1 FOR BOLT ASSEMBLY DETAILS

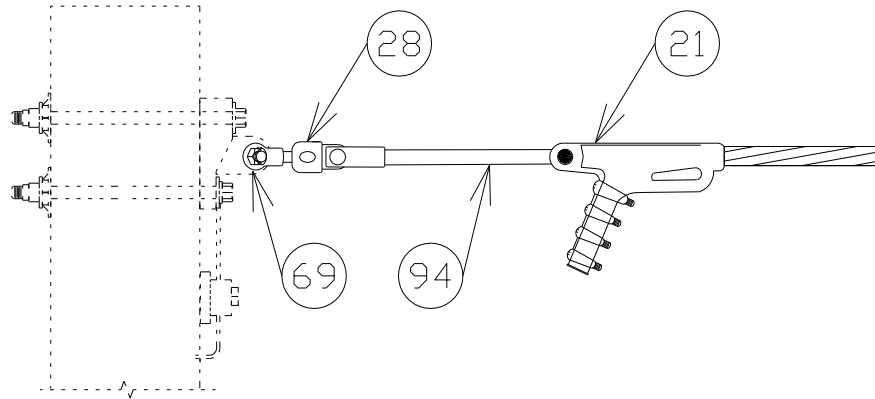
MINIMUM REQUIRED BOLT LENGTH 'A' (INCHES)	20.2
MINIMUM REQUIRED BOLT LENGTH 'B' (INCHES)	20.7

NOTE: BOLT CALCULATIONS ASSUME A 17" POLE TOP DIAMETER

NO.	ITEM ID	QTY	DESCRIPTION
6	ARMST 012	2	6.5 FT SHEILD ARM, 14" HOLE SPACING SUPPLIED WITH 5/8 HOLE FOR GROUNDING
12	BOLMS 052	2	MACHINE BOLT, 7/8" X 22", SQUARE HEAD, GALVANIZED, WITH SQUARE NUT ATTACHED
22	CLASU 001	2	ALUMINUM SUSPENSION CLAMP FOR 3#6AW / 7#10AW, 15000#
23	CLASW 001	2	SHIELD WIRE CLAMP FOR 3#6AW / 3#7CU, GALV.
24	CLATG 001	1	CLAMP, TRANSFORMER TANK GROUND, BRONZE, #6 SOL - #1 STR
25	CLECY 001	2	90 DEGREE EYE CLEVIS, 30,000#, 1/2" EYE THICKNESS, 11/16" HOLE DIAM. H.D.G., 5/8" PIN DIA.,
31	CNNCP 003	2	COMPRESSION CONNECTOR, TYPE H, (3#6 AW) TO (3#6 AW), ALUMINUM
35	COBAS 005	8 ft	CONDUCTOR, 3#6 AW
36	COBCO 028	3 ft	#4 SOLID BARE COPPER CONDUCTOR, SOFT DRAWN
47	GUALI 001	2	ALUMINUM LINE GUARD FOR 3#6AW, 23" LG, RANGE .347" - 366"
58	LUGGR 002	1	LUG FOR 7/8" BOLT, #4 SOLID WIRE, TIN PLATED COPPER COMPRESSION
62	NUTSL 005	2	LOCKNUT FOR 7/8" BOLT
76	WASRD 006	4	ROUND WASHER FOR 7/8" BOLT, 2 1/2" DIAMETER, GALVANIZED

SSDEX

SHIELD FOR SPUN CONCRETE POLES DEAD END EXTENSION

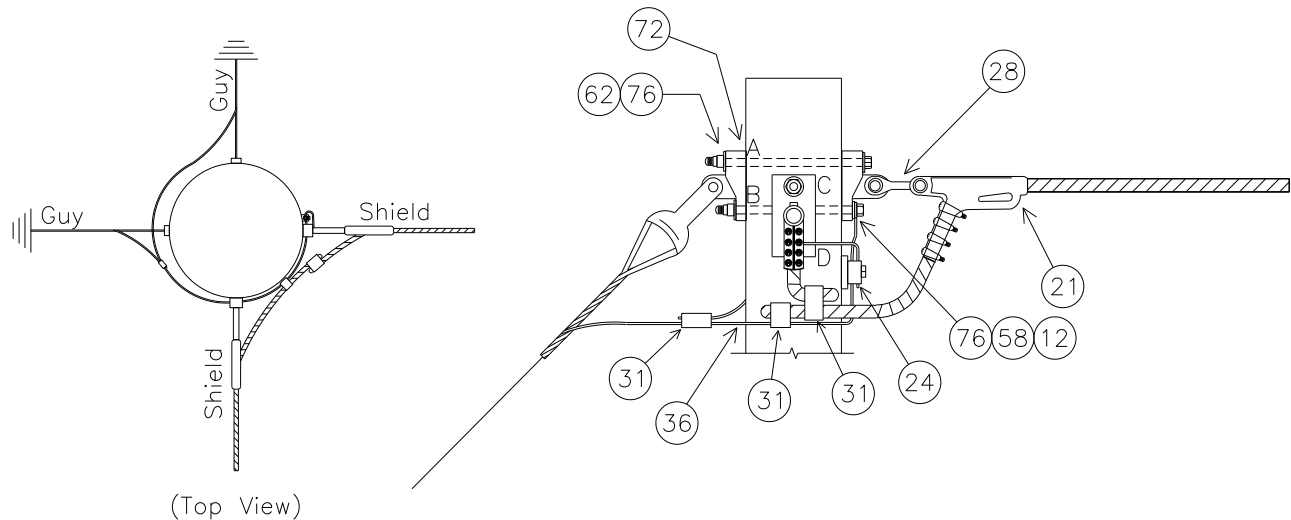


NO.	ITEM ID	QTY	DESCRIPTION
21	CLAQD 008	1	DEADEND CLAMP (.2 - .55") 19,000# STRENGTH, GAP = 7/8", PIN = 5/8"CLAMP, DUCT. IRON, 3#6 AW
28	CLETE 001	1	CLEVIS, TOWER EYE, 90 DEGREE, 30,000# 5/8" EYE THICKNESS, 11/16" HOLE DIAMETER, HDG
94	LIKEX 002	1	LINK, EXTENSION, CLEVIS/EYE TYPE FITTING 14" LENGTH, ULTIMATE STRENGTH 15,000#
69	SOCEY 003	1	SOCKET, EYE, SE5154, FORGED STEEL GALVANIZED

11/19/2011

SSDI90DG

SHIELD FOR SPUN CONCRETE POLES
DOUBLE IN-LINE 90°, DOUBLE GUY



NOTE: SEE MBA1 FOR BOLT ASSEMBLY DETAILS

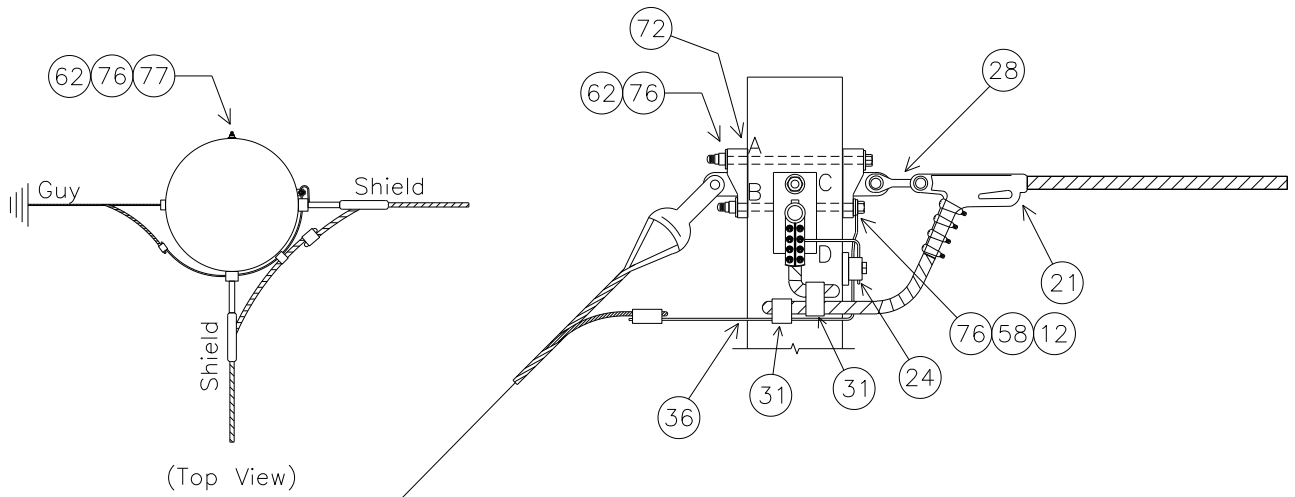
MINIMUM REQUIRED BOLT LENGTH 'A' (INCHES)	22.6
MINIMUM REQUIRED BOLT LENGTH 'B' (INCHES)	20.9
MINIMUM REQUIRED BOLT LENGTH 'C' (INCHES)	22.6
MINIMUM REQUIRED BOLT LENGTH 'D' (INCHES)	21.0

NOTE: BOLT CALCULATIONS ASSUME A 17" POLE TOP DIAMETER

NO.	ITEM ID	QTY	DESCRIPTION
12	BOLMS 040	2	MACHINE BOLT, 3/4" X 22", SQUARE HEAD, GALVANIZED, WITH SQUARE NUT ATTACHED
12	BOLMS 041	2	MACHINE BOLT, 3/4" X 24", SQUARE HEAD, GALVANIZED, WITH SQUARE NUT ATTACHED
21	CLAQD 008	2	DEADEND CLAMP (.2 - .55") 19,000# STRENGTH, GAP = 7/8", PIN = 5/8" CLAMP, DUCT. IRON, 3#6 AW
24	CLATG 001	1	CLAMP, TRANSFORMER TANK GROUND, BRONZE, #6 SOL - #1 STR
28	CLETE 001	2	TOWER Y-EYE CLEVIS, 3/4" PIN, 5/8" EYE THICKNESS, 11/16" EYE DIAMETER H.D.G., 90 DEG
31	CNNCP 002	1	COMPRESSION CONNECTOR, TYPE H (3#6 AW) TO (#4 CU), ALUMINUM
31	CNNCP 003	1	COMPRESSION CONNECTOR, TYPE H, (3#6 AW) TO (3#6 AW), ALUMINUM
31	CNNCP 016	1	COMPRESSION CONNECTOR, #4 SOL. CU. TO #4 SOL. CU., COPPER, FOR CU CONNECTIONS ONLY
36	COBCO 028	6 ft	#4 SOLID BARE COPPER CONDUCTOR, SOFT DRAWN
58	LUGGR 001	2	LUG FOR 3/4" BOLT, #4 SOLID WIRE, TIN PLATED COPPER COMPRESSION
62	NUTSL 004	4	SQUARE LOCK NUT FOR 3/4" BOLT, H.D.G.
72	TEEDE 003	4	TEE, DUCTILE IRON, H.D.G. 6" HOLE SPACING, STRENGTH = 60,000#
76	WASRD 005	8	ROUND WASHER FOR 3/4" BOLT, 2" DIAMETER, GALVANIZED

SSDI90SG

SHIELD FOR SPUN CONCRETE POLES
DOUBLE IN-LINE 90°, SINGLE GUY



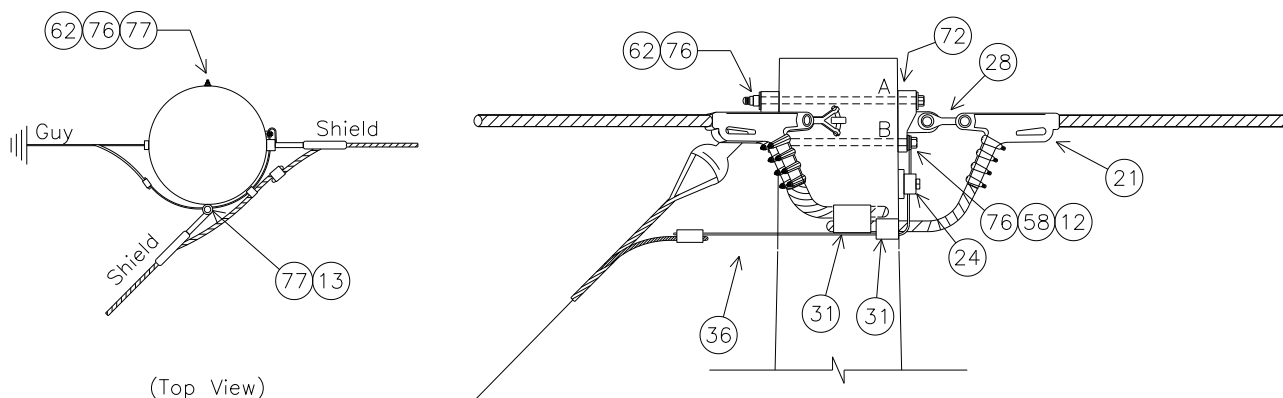
NOTE: SEE MBA1 FOR BOLT ASSEMBLY DETAILS

SUBSTRUCTURE	DOUBLE TEE SIDE	SINGLE TEE SIDE
UPPER BOLT LENGTH	22.6	21.3
LOWER BOLT LENGTH	20.9	20.6

NOTE: BOLT CALCULATIONS ASSUME A 17" POLE TOP DIAMETER

NO.	ITEM ID	QTY	DESCRIPTION
12	BOLMS 040	3	MACHINE BOLT, 3/4" X 22", SQUARE HEAD, GALVANIZED, WITH SQUARE NUT ATTACHED
12	BOLMS 041	1	MACHINE BOLT, 3/4" X 24", SQUARE HEAD, GALVANIZED, WITH SQUARE NUT ATTACHED
21	CLAQD 008	2	DEADEND CLAMP (.2 - .55") 19,000# STRENGTH, GAP = 7/8", PIN = 5/8" CLAMP, DUCT. IRON, 3#6 AW
24	CLATG 001	1	CLAMP, TRANSFORMER TANK GROUND, BRONZE, #6 SOL - #1 STR
28	CLETE 001	2	TOWER Y-EYE CLEVIS, 3/4" PIN, 5/8" EYE THICKNESS, 11/16" EYE DIAMETER H.D.G. 90 DEG
31	CNNCP 002	1	COMPRESSION CONNECTOR, TYPE H (3#6 AW) TO (#4 CU), ALUMINUM
31	CNNCP 003	1	COMPRESSION CONNECTOR, TYPE H, (3#6 AW) TO (3#6 AW), ALUMINUM
36	COBCO 028	3 ft	#4 SOLID BARE COPPER CONDUCTOR, SOFT DRAWN
58	LUGGR 001	2	LUG FOR 3/4" BOLT, #4 SOLID WIRE, TIN PLATED COPPER COMPRESSION
62	NUTSL 004	4	SQUARE LOCK NUT FOR 3/4" BOLT, H.D.G.
72	TEEDE 003	3	TEE, DUCTILE IRON, H.D.G. 6" HOLE SPACING, STRENGTH = 60,000#
76	WASRD 005	8	ROUND WASHER FOR 3/4" BOLT, 2" DIAMETER, GALVANIZED
77	WASSC 001	2	SQUARE CURVED WASHER FOR 3/4" BOLTS, GALVANIZED, 4" X 4"

SSDI135SG

SHIELD FOR SPUN CONCRETE POLES
DOUBLE IN-LINE 135°, SINGLE GUY

NOTE: SEE MBA1 FOR BOLT ASSEMBLY DETAILS

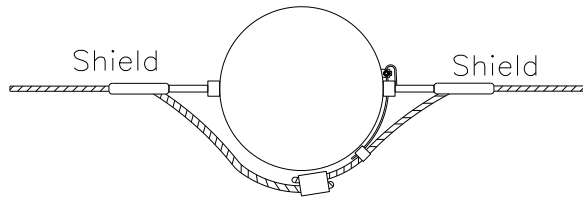
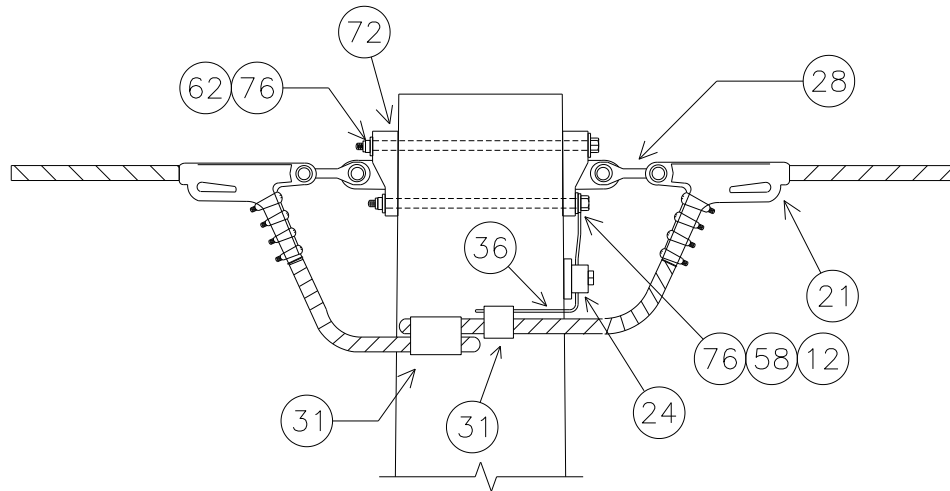
MINIMUM REQUIRED BOLT LENGTH 'A' (INCHES)	22.6
MINIMUM REQUIRED BOLT LENGTH 'B' (INCHES)	20.9
MINIMUM REQUIRED SHOULDER EYE BOLT LENGTH (INCHES)	20.1

NOTE: BOLT CALCULATIONS ASSUME A 17" POLE TOP DIAMETER

NO.	ITEM ID	QTY	DESCRIPTION
12	BOLMS 040	1	MACHINE BOLT, 3/4" X 22", SQUARE HEAD, GALVANIZED, WITH SQUARE NUT ATTACHED
12	BOLMS 041	1	MACHINE BOLT, 3/4" X 24", SQUARE HEAD, GALVANIZED, WITH SQUARE NUT ATTACHED
13	BOLSE 021	1	SHOULDER BOLTEYE, GALVANIZED, 7/8" X 22" PROVIDED BY CONTRACTOR
21	CLAQD 008	2	DEADEND CLAMP (.2 - .55") 19,000# STRENGTH, GAP = 7/8", PIN = 5/8" CLAMP, DUCT. IRON, 3#6 AW
24	CLATG 001	1	CLAMP, TRANSFORMER TANK GROUND, BRONZE, #6 SOL - #1 STR
28	CLETE 001	1	TOWER Y-EYE CLEVIS, 3/4" PIN, 5/8" EYE THICKNESS, 11/16" EYE DIAMETER H.D.G.
28	CLETE 004	1	TOWER Y-EYE CLEVIS, 3/4" PIN, 5/8" EYE THICKNESS, 11/16" EYE DIAMETER H.D.G., 90 DEG
31	CNNCP 002	1	COMPRESSION CONNECTOR, TYPE H (3#6 AW) TO (3#6 AW), ALUMINUM
31	CNNCP 003	1	COMPRESSION CONNECTOR, TYPE H, (3#6 AW) TO (3#6 AW), ALUMINUM
36	COBCO 028	3 ft	#4 SOLID BARE COPPER CONDUCTOR, SOFT DRAWN
58	LUGGR 001	1	LUG FOR 3/4" BOLT, #4 SOLID WIRE, TIN PLATED COPPER COMPRESSION
62	NUTSL 004	2	SQUARE LOCK NUT FOR 3/4" BOLT, H.D.G.
62	NUTSL 005	1	SQUARE LOCK NUT FOR 7/8" BOLT, H.D.G.
72	TEEDE 003	2	TEE, DUCTILE IRON, H.D.G. 6" HOLE SPACING, STRENGTH = 60,000#
76	WASRD 005	4	ROUND WASHER FOR 3/4" BOLT, 2" DIAMETER, GALVANIZED
76	WASRD 006	1	ROUND WASHER FOR 7/8" BOLT, 2 1/2" DIAMETER, GALVANIZED
77	WASSC 002	2	SQUARE CURVED WASHER FOR 7/8" BOLTS, GALVANIZED, 4" X 4"

SSDI180

SHIELD FOR SPUN CONCRETE POLES
DOUBLE INLINE 180°



(Top View)

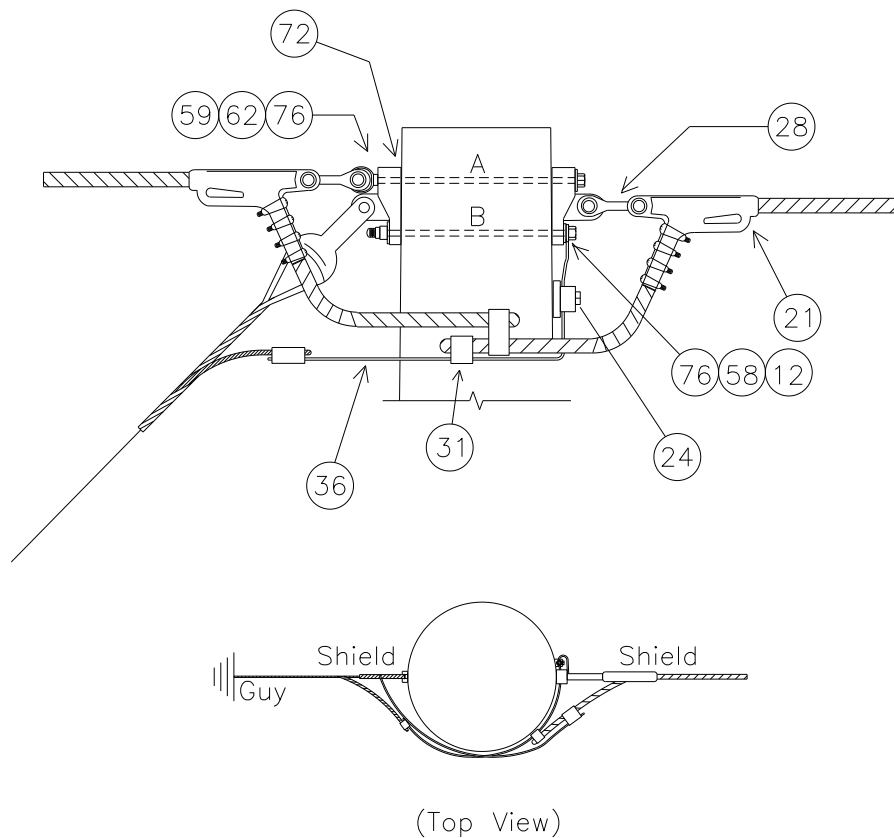
NOTE: SEE SUBSTRUCTURE DETAIL MBA1 FOR BOLT ASSEMBLY DETAILS

UPPER BOLT LENGTH	22.6
LOWER BOLT LENGTH	20.9

NOTE: BOLT CALCULATIONS ASSUME A 17" POLE TOP DIAMETER

NO.	ITEM ID	QTY	DESCRIPTION
12	BOLMS 040	1	MACHINE BOLT, 3/4" X 22", SQUARE HEAD, GALVANIZED, WITH SQUARE NUT ATTACHED
12	BOLMS 041	1	MACHINE BOLT, 3/4" X 24", SQUARE HEAD, GALVANIZED, WITH SQUARE NUT ATTACHED
21	CLAQD 008	2	DEADEND CLAMP (.2 - .55") 19,000# STRENGTH, GAP = 7/8", PIN = 5/8" CLAMP, DUCT. IRON, 3#6 AW
24	CLATG 001	1	CLAMP, TRANSFORMER TANK GROUND, BRONZE, #6 SOL - #1 STR
28	CLETE 001	2	TOWER Y-EYE CLEVIS, 3/4" PIN, 5/8" EYE THICKNESS, 11/16" EYE DIAMETER H.D.G., 90 DEG
31	CNNCP 002	1	COMPRESSION CONNECTOR, TYPE H (3#6 AW) TO (#4 CU), ALUMINUM
31	CNNCP 003	1	COMPRESSION CONNECTOR, TYPE H, (3#6 AW) TO (3#6 AW), ALUMINUM
36	COBCO 028	3 ft	#4 SOLID BARE COPPER CONDUCTOR, SOFT DRAWN
58	LUGGR 001	1	LUG FOR 3/4" BOLT, #4 SOLID WIRE, TIN PLATED COPPER COMPRESSION
62	NUTSL 004	2	SQUARE LOCK NUT FOR 3/4" BOLT, H.D.G.
72	TEEDE 003	2	TEE, DUCTILE IRON, H.D.G. 6" HOLE SPACING, STRENGTH = 60,000#
76	WASRD 005	4	ROUND WASHER FOR 3/4" BOLT, 2" DIAMETER, GALVANIZED

SSDI180G

SHIELD FOR SPUN CONCRETE POLES
DOUBLE INLINE 180°, GUY

NOTE: SEE SUBSTRUCTURE DETAIL MBA1 FOR BOLT ASSEMBLY DETAILS

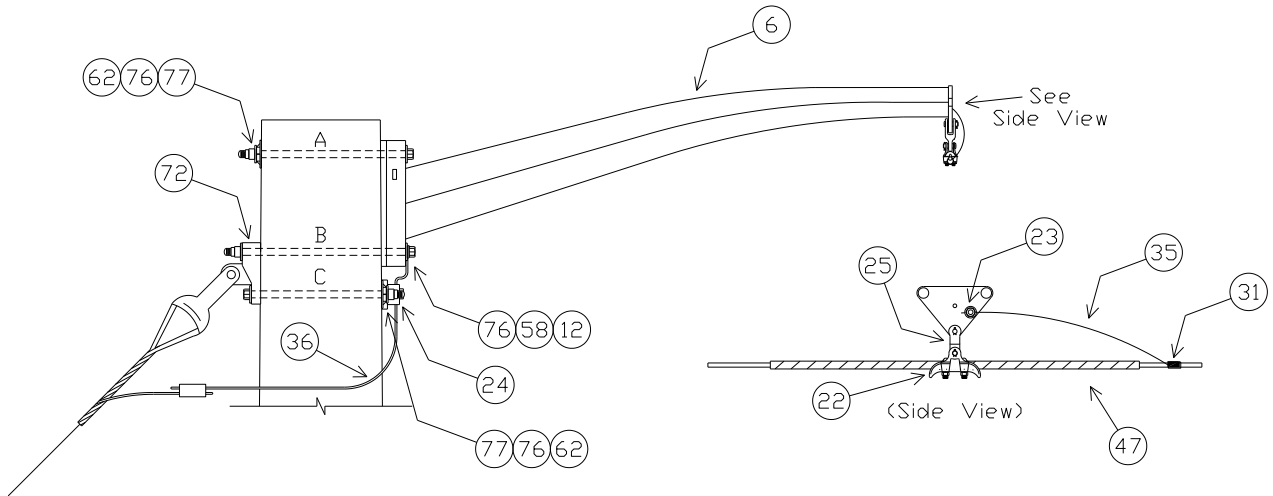
UPPER BOLT LENGTH	23.6
LOWER BOLT LENGTH	20.9

NOTE: BOLT CALCULATIONS ASSUME A 17" POLE TOP DIAMETER

NO.	ITEM ID	QTY	DESCRIPTION
12	BOLMS 040	1	MACHINE BOLT, 3/4" X 22", SQUARE HEAD, GALVANIZED, WITH SQUARE NUT ATTACHED
12	BOLMS 041	1	MACHINE BOLT, 3/4" X 24", SQUARE HEAD, GALVANIZED, WITH SQUARE NUT ATTACHED
21	CLAQD 008	2	DEADEND CLAMP (.2 - .55") 19,000# STRENGTH, GAP = 7/8", PIN = 5/8" CLAMP, DUCT. IRON, 3#6 AW
24	CLATG 001	1	CLAMP, TRANSFORMER TANK GROUND, BRONZE, #6 SOL - #1 STR
28	CLETE 001	2	TOWER Y-EYE CLEVIS, 3/4" PIN, 5/8" EYE THICKNESS, 11/16" EYE DIAMETER H.D.G., 90 DEG
31	CNNCP 002	1	COMPRESSION CONNECTOR, TYPE H (3#6 AW) TO (#4 CU), ALUMINUM
31	CNNCP 003	1	COMPRESSION CONNECTOR, TYPE H, (3#6 AW) TO (3#6 AW), ALUMINUM
36	COBCO 028	3 ft	#4 SOLID BARE COPPER CONDUCTOR, SOFT DRAWN
58	LUGGR 001	1	LUG FOR 3/4" BOLT, #4 SOLID WIRE, TIN PLATED COPPER COMPRESSION
59	NUTEY 003	1	NUTEYE FOR 3/4" BOLT
62	NUTSL 004	3	SQUARE LOCK NUT FOR 3/4" BOLT, H.D.G.
72	TEEDE 003	2	TEE, DUCTILE IRON, H.D.G. 6" HOLE SPACING, STRENGTH = 60,000#
76	WASRD 005	4	ROUND WASHER FOR 3/4" BOLT, 2" DIAMETER, GALVANIZED

SSSDG

SHIELD FOR SPUN CONCRETE POLES SINGLE DAVIT ARM, GUYED



NOTE: SEE MBA1 FOR BOLT ASSEMBLY DETAILS

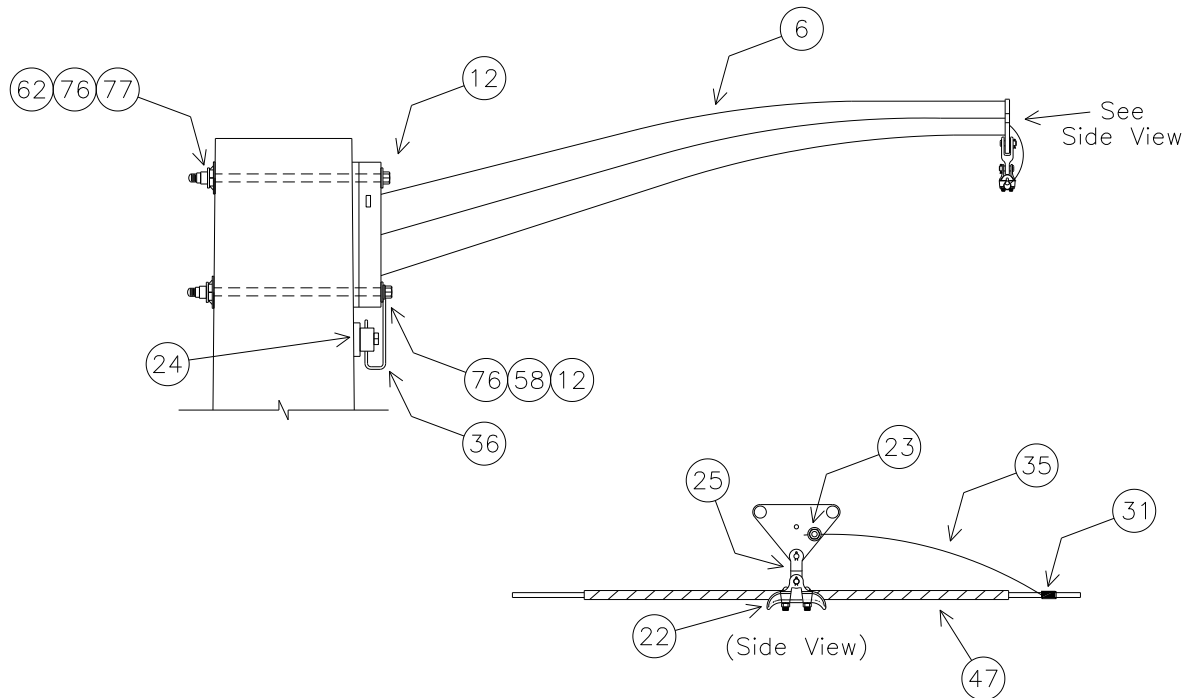
BOLT LENGTH 'A' (INCHES)	20.1
BOLT LENGTH 'B' (INCHES)	21.9
BOLT LENGTH 'C' (INCHES)	20.7

NOTE: BOLT CALCULATIONS ASSUME A 17" POLE TOP DIAMETER

NO.	ITEM ID	QTY	DESCRIPTION
6	ARMST 012	1	6.5 FT SHIELD ARM, 14" HOLE SPACING SUPPLIED WITH 5/8" HOLE FOR GROUNDING
12	BOLMS 052	3	MACHINE BOLT, 7/8" X 22", SQUARE HEAD, GALVANIZED, WITH SQUARE NUT ATTACHED
22	CLASU 001	1	ALUMINUM SUSPENSION CLAMP FOR 3#6AW / 7#10AW, 15000#
23	CLASW 001	1	SHIELD WIRE CLAMP FOR 3#6AW / 3#7CU, GALV.
24	CLATG 001	1	CLAMP, TRANSFORMER TANK GROUND, BRONZE, #6 SOL - #1 STR
25	CLECY 001	1	90 DEGREE EYE CLEVIS, 30,000#, H.D.G.,
31	CNNCP 003	1	COMPRESSION CONNECTOR, TYPE H, (3#6 AW) TO (3#6 AW), ALUMINUM
35	COBAS 005	4 ft	CONDUCTOR, 3#6 AW
36	COBCO 028	3 ft	#4 SOLID BARE COPPER CONDUCTOR, SOFT DRAWN
47	GUALI 001	1	ALUMINUM LINE GUARD FOR 3#6AW, 23" LG, RANGE .347" - 366"
58	LUGGR 002	1	LUG FOR 7/8" BOLT, #4 SOLID WIRE, TIN PLATED COPPER COMPRESSION
62	NUTSL 005	3	LOCKNUT FOR 7/8" BOLT
72	TEEDE 003	1	TEE, A36 STEEL, H.D.G. 6" HOLE SPACING, 13/16" BOLT HOLE DIA., 1 1/4" HOLE ATTACHMENT
76	WASRD 006	6	ROUND WASHER FOR 7/8" BOLT, 2 1/2" DIAMETER, GALVANIZED
77	WASSC 002	2	SQUARE CURVED WASHER FOR 7/8" BOLTS, RIBBED MALLEABLE IRON-GALVANIZED, 4" X 4"

SSSDN

SHIELD FOR SPUN CONCRETE POLES
SINGLE DAVIT ARM, NO GUY



NOTE: SEE MBA1 FOR BOLT ASSEMBLY DETAILS

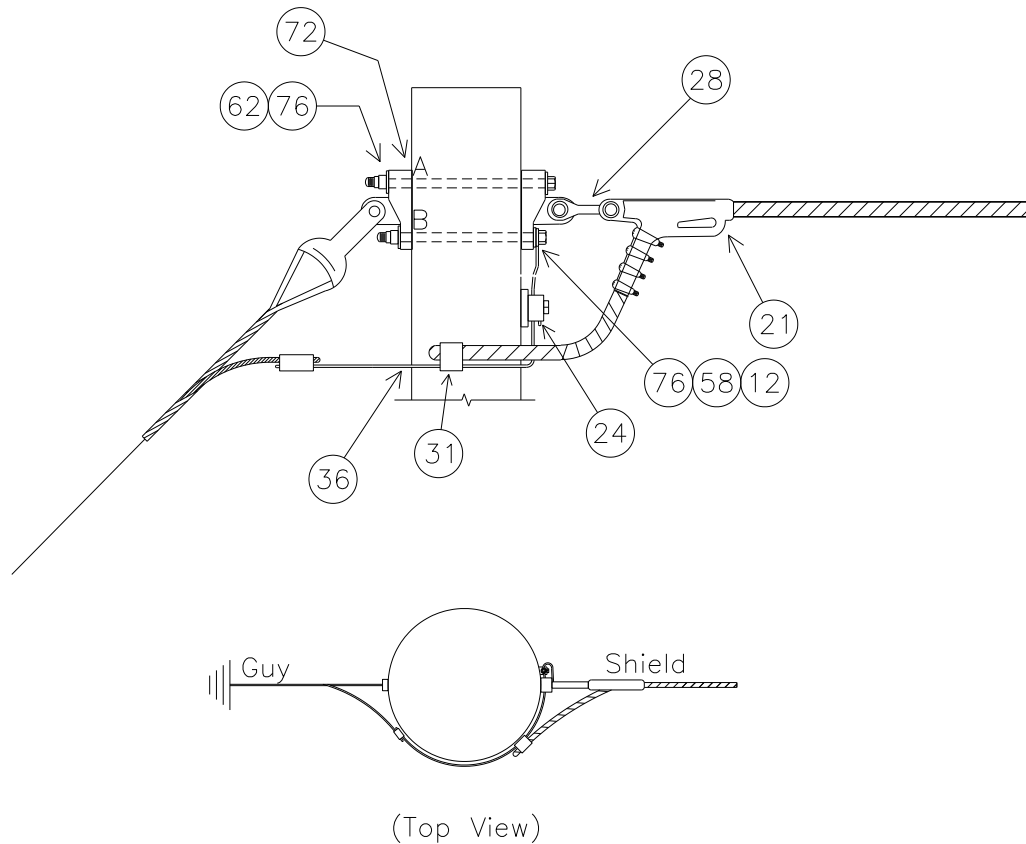
UPPER BOLT LENGTH (INCHES)	20.1
LOWER BOLT LENGTH (INCHES)	20.5

NOTE: BOLT CALCULATIONS ASSUME A 17" POLE TOP DIAMETER

NO.	ITEM ID	QTY	DESCRIPTION
6	ARMST 012	1	6.5 FT SHEILD ARM, 14" HOLE SPACING SUPPLIED WITH 5/8 HOLE FOR GROUNDING
12	BOLMS 052	2	MACHINE BOLT, 7/8" X 22", SQUARE HEAD, GALVANIZED, WITH SQUARE NUT ATTACHED
22	CLASU 001	1	ALUMINUM SUSPENSION CLAMP FOR 3#6AW / 7#10AW, 15000#
23	CLASW 001	1	SHIELD WIRE CLAMP FOR 3#6AW / 3#7CU, GALV.
24	CLATG 001	1	CLAMP, TRANSFORMER TANK GROUND, BRONZE, #6 SOL - #1 STR
25	CLECY 001	1	90 DEGREE EYE CLEVIS, 30,000#, H.D.G.,
31	CNNCP 003	1	COMPRESSION CONNECTOR, TYPE H, (3#6 AW) TO (3#6 AW), ALUMINUM
35	COBAS 005	4 ft	CONDUCTOR, 3#6 AW
36	COBCO 028	3 ft	#4 SOLID BARE COPPER CONDUCTOR, SOFT DRAWN
47	GUALI 001	1	ALUMINUM LINE GUARD FOR 3#6AW, 23" LG, RANGE .347" - 366"
58	LUGGR 002	1	LUG FOR 7/8" BOLT, #4 SOLID WIRE, TIN PLATED COPPER COMPRESSION
62	NUTSL 005	2	LOCKNUT FOR 7/8" BOLT
76	WASRD 006	4	ROUND WASHER FOR 7/8" BOLT, 2 1/2" DIAMETER, GALVANIZED
77	WASSC 002	2	SQUARE CURVED WASHER FOR 7/8" BOLTS, RIBBED MALLEABLE IRON-GALVANIZED, 4" X 4"

SSSIG

SHIELD FOR SPUN CONCRETE POLES SINGLE IN-LINE, GUY



NOTE: SEE MBA1 FOR BOLT ASSEMBLY DETAILS

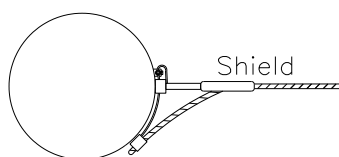
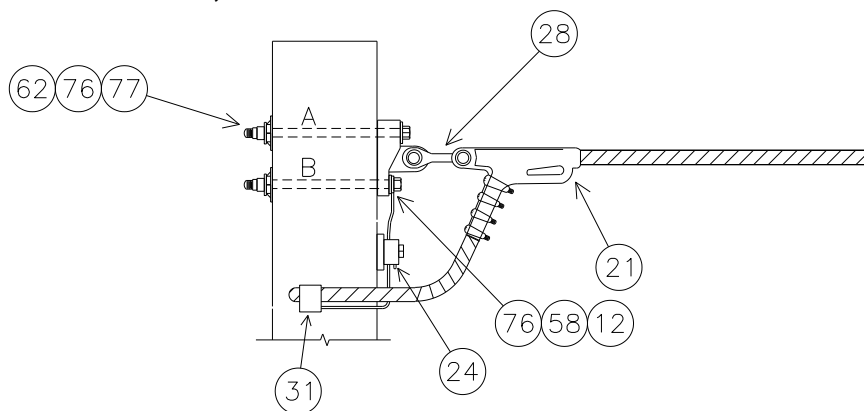
BOLT LENGTH 'A' (INCHES)	22.6
BOLT LENGTH 'B' (INCHES)	20.9

NOTE: BOLT CALCULATIONS ASSUME A 17" POLE TOP DIAMETER

NO.	ITEM ID	QTY	DESCRIPTION
12	BOLMS 040	1	MACHINE BOLT, 3/4" X 22", SQUARE HEAD, GALVANIZED, WITH SQUARE NUT ATTACHED
12	BOLMS 041	1	MACHINE BOLT, 3/4" X 24", SQUARE HEAD, GALVANIZED, WITH SQUARE NUT ATTACHED
21	CLAQD 008	1	DEADEND CLAMP (.2 - .55") 19,000# STRENGTH, GAP = 7/8", PIN = 5/8" CLAMP, DUCT. IRON, 3#6 AW
24	CLATG 001	1	CLAMP, TRANSFORMER TANK GROUND, BRONZE, #6 SOL - #1 STR
28	CLETE 001	1	TOWER Y-EYE CLEVIS, 3/4" PIN, 5/8" EYE THICKNESS, 11/16" EYE DIAMETER H.D.G., 90 DEG
31	CNNCP 002	1	COMPRESSION CONNECTOR, TYPE H (3#6 AW) TO (#4 CU), ALUMINUM
36	COBCO 028	4 ft	#4 SOLID BARE COPPER CONDUCTOR, SOFT DRAWN
58	LUGGR 001	1	LUG FOR 3/4" BOLT, #4 SOLID WIRE, TIN PLATED COPPER COMPRESSION
62	NUTSL 004	2	SQUARE LOCK NUT FOR 3/4" BOLT, H.D.G.
72	TEEDE 003	2	TEE, DUCTILE IRON, H.D.G. 6" HOLE SPACING, STRENGTH = 60,000#
76	WASRD 005	4	ROUND WASHER FOR 3/4" BOLT, 2" DIAMETER, GALVANIZED

SSSIN

SHIELD FOR SPUN CONCRETE POLES SINGLE IN-LINE, NO GUY



(Top View)

NOTE: SEE MBA1 FOR BOLT ASSEMBLY DETAILS

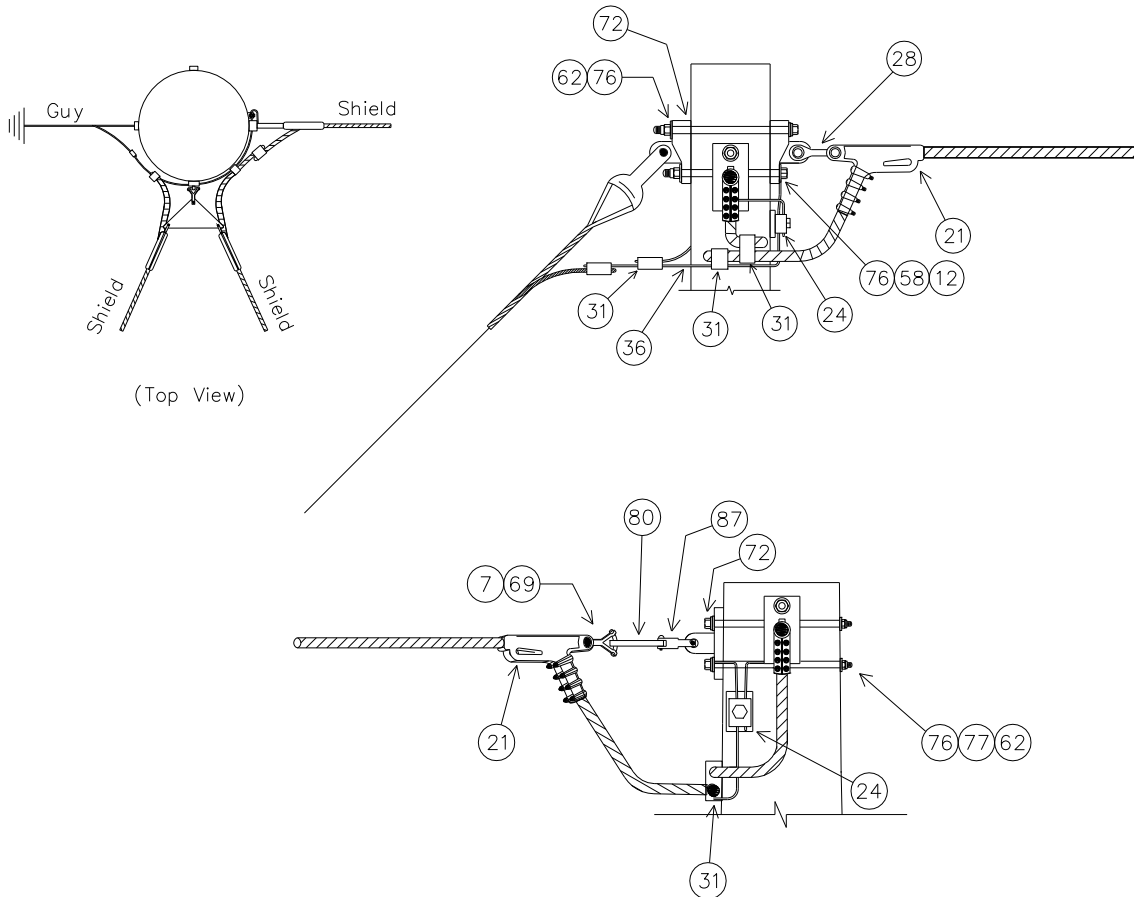
BOLT LENGTH 'A' (INCHES)	21.2
BOLT LENGTH 'B' (INCHES)	20.6

NOTE: BOLT CALCULATIONS ASSUME A 17" POLE TOP DIAMETER

NO.	ITEM ID	QTY	DESCRIPTION
12	BOLMS 040	2	MACHINE BOLT, 3/4" X 22", SQUARE HEAD, GALVANIZED, WITH SQUARE NUT ATTACHED
21	CLAQD 008	1	DEADEND CLAMP (.2 - .55") 19,000# STRENGTH, GAP = 7/8", PIN = 5/8" CLAMP, DUCT. IRON, 3#6 AW
24	CLATG 001	1	CLAMP, TRANSFORMER TANK GROUND, BRONZE, #6 SOL - #1 STR
28	CLETE 001	1	TOWER Y-EYE CLEVIS, 3/4" PIN, 5/8" EYE THICKNESS, 11/16" EYE DIAMETER H.D.G., 90 DEG
31	CNNCP 002	1	COMPRESSION CONNECTOR, TYPE H (3#6 AW) TO (#4 CU), ALUMINUM
36	COBCO 028	4 ft	#4 SOLID BARE COPPER CONDUCTOR, SOFT DRAWN
58	LUGGR 001	1	LUG FOR 3/4" BOLT, #4 SOLID WIRE, TIN PLATED COPPER COMPRESSION
62	NUTSL 004	2	SQUARE LOCK NUT FOR 3/4" BOLT, H.D.G.
72	TEEDE 003	2	TEE, DUCTILE IRON, H.D.G. 6" HOLE SPACING, STRENGTH = 60,000#
76	WASRD 005	4	ROUND WASHER FOR 3/4" BOLT, 2" DIAMETER, GALVANIZED
77	WASSC 001	2	SQUARE CURVED WASHER FOR 3/4" BOLTS, RIBBED MALLEABLE IRON-GALVANIZED, 4" X 4"

SSS90

SPLIT SHIELD FOR SPUN CONCRETE POLES DOUBLE IN-LINE 90°, SINGLE GUY



NOTE: SEE MBA1 FOR BOLT ASSEMBLY DETAILS

SUBSTRUCTURE	DOUBLE TEE SIDE	SINGLE TEE SIDE
UPPER BOLT LENGTH (INCHES)	22.6	21.3
LOWER BOLT LENGTH (INCHES)	20.9	20.6

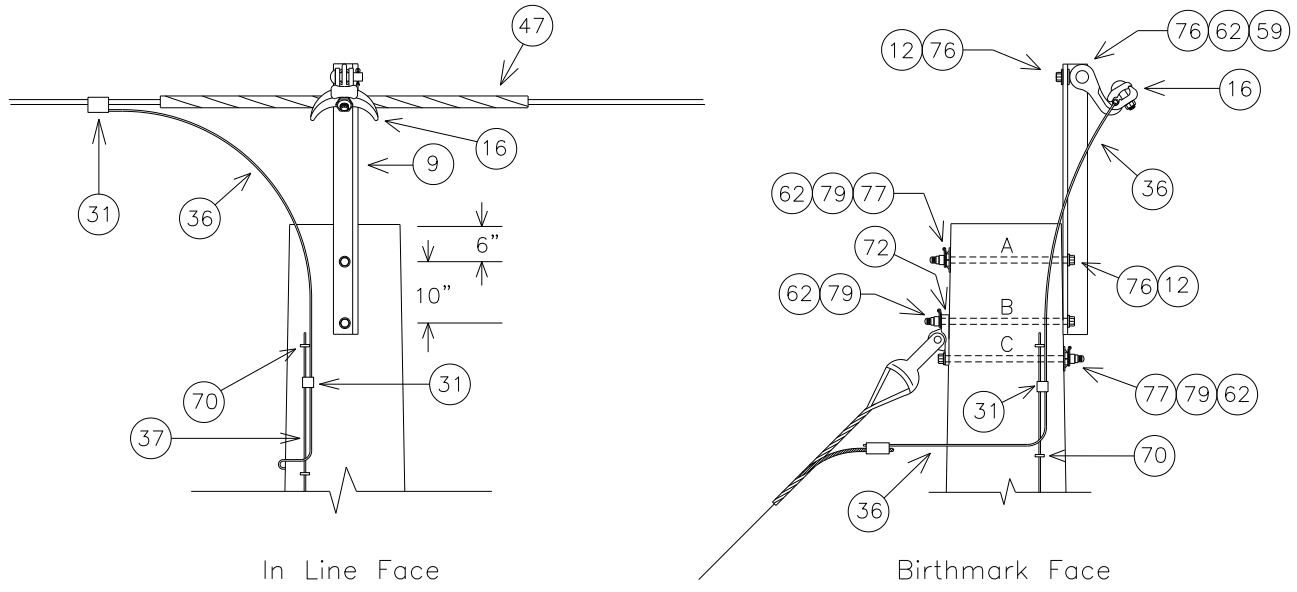
NOTE: BOLT CALCULATIONS ASSUME A 17" POLE TOP DIAMETER

SSS90**SPLIT SHIELD FOR SPUN CONCRETE POLES
DOUBLE IN-LINE 90°, SINGLE GUY**

NO.	ITEM ID	QTY	DESCRIPTION
7	BALFI 007	2	BALL FITTING, TYPE Y-CLEVIS, 30000# ULTM STRENGTH, NEMA HDWH 52-3, GALV.
12	BOLMS 040	3	MACHINE BOLT, 3/4" X 22", SQUARE HEAD, GALVANIZED, WITH SQUARE NUT ATTACHED
12	BOLMS 041	1	MACHINE BOLT, 3/4" X 24", SQUARE HEAD, GALVANIZED, WITH SQUARE NUT ATTACHED
21	CLAQD 008	3	DEADEND CLAMP (.2 - .55") 19,000# STRENGTH, GAP = 7/8", PIN = 5/8" CLAMP, DUCT. IRON, 3#6 AW
24	CLATG 001	1	CLAMP, TRANSFORMER TANK GROUND, BRONZE, #6 SOL - #1 STR
28	CLETE 001	1	TOWER Y-EYE CLEVIS, 3/4" PIN, 5/8" EYE THICKNESS, 11/16" EYE DIAMETER H.D.G., 90 DEG
87	CLEYY 001	1	CLEVIS, "Y", 90-DEGREE, 13/16" OPENING 3/4" Y-PIN, 5/8" CLEVIS PIN, 30,000#
31	CNNCP 002	2	COMPRESSION CONNECTOR, TYPE H (3#6 AW) TO (#4 CU), ALUMINUM
31	CNNCP 003	2	COMPRESSION CONNECTOR, TYPE H, (3#6 AW) TO (3#6 AW), ALUMINUM
36	COBCO 028	4 ft	#4 SOLID BARE COPPER CONDUCTOR, SOFT DRAWN
58	LUGGR 001	2	LUG FOR 3/4" BOLT, #4 SOLID WIRE, TIN PLATED COPPER COMPRESSION
62	NUTSL 004	4	SQUARE LOCK NUT FOR 3/4" BOLT, H.D.G.
69	SOCEY 004	2	SOCKET, EYE, 52-3 & 4 NEMA, FORGED STEEL GALVANIZED, LAPP P/N 36912
72	TEEDE 003	3	TEE, DUCTILE IRON, H.D.G. 6" HOLE SPACING, STRENGTH = 60,000#
76	WASRD 005	8	ROUND WASHER FOR 3/4" BOLT, 2" DIAMETER, GALVANIZED
77	WASSC 001	2	SQUARE CURVED WASHER FOR 3/4" BOLTS, GALVANIZED, 4" X 4"
80	YOKPL001	1	YOKE PLATE, SUSPENSION, VEE STRING TYPE, 8" INSULATOR SPACING, 30000#, GALVANIZED , 15/16" HOLE DIA

SWBAB

SHIELD FOR WOOD POLES BAYONET WITH ANGLE CLAMP, BOTTOM GUYED



NOTE: SEE MBA1 FOR BOLT ASSEMBLY DETAILS

MINIMUM REQUIRED BOLT LENGTH 'A' (INCHES)	11.4
MINIMUM REQUIRED BOLT LENGTH 'B' (INCHES)	12.4
MINIMUM REQUIRED BOLT LENGTH 'C' (INCHES)	11.9

NOTE: BOLT CALCULATIONS ASSUME A 9 INCH POLE TOP DIAMETER

NO.	ITEM ID	QTY	DESCRIPTION
9	BAYSW 003	1	BAYONET FOR SHIELD WIRE, CORNER 40"
12	BOLMS 032	1	MACHINE BOLT, 3/4" X 6", SQUARE HEAD, GALVANIZED, WITH SQUARE NUT ATTACHED
12	BOLMS 035	2	MACHINE BOLT, 3/4" X 12", SQUARE HEAD, GALVANIZED, WITH SQUARE NUT ATTACHED
12	BOLMS 036	1	MACHINE BOLT, 3/4" X 14", SQUARE HEAD, GALVANIZED, WITH SQUARE NUT ATTACHED
16	CLAA N 001	1	ANGLE CLAMP FOR 4-SOL - 250MCM, 7000#
31	CNNCP 002	1	COMPRESSION CONNECTOR, TYPE H, (3#6 AW) TO (#4 CU); (.258 - .420) TO (.162 - .332), ALUMINUM
31	CNNCP 016	1	COMPRESSION CONNECTOR, #4 SOL. CU. TO #4 SOL. CU., COPPER
36	COBCO 028	4 ft	#4 SOLID BARE COPPER CONDUCTOR, SOFT DRAWN
37	COBCW 014	80 ft	#4 COPPERWELD CONDUCTOR
47	GUALI 001	1	ALUMINUM LINE GUARD FOR 3#6AW, 23" LG, RANGE .347" - 366"
59	NUTEY 003	1	NUT EYE FOR 3/4" BOLT
62	NUTSL 004	4	SQUARE LOCK NUT FOR 3/4" BOLT, HOT DIPPED GALVANIZED
70	STAPL 002	40	STAPLE, COPPERWELD, 3/8" X 1 1/2"
72	TEEDE 002	1	TEE, MALLIABLE IRON, FOR WOOD POLE APPLICATION, H.D.G., 6" HOLE SPACING
76	WASRD 005	5	ROUND WASHER FOR 3/4" BOLT, 2" DIAMETER, GALVANIZED
77	WASSC 001	2	SQUARE CURVED WASHER FOR 3/4" BOLTS, RIBBED MALLEABLE IRON-GALVANIZED, 4" X 4"
79	WASSP 005	3	SPRING WASHER FOR 3/4" BOLT, LEAF TYPE, GALVANIZED

REVISED/REVIEWED: OCTOBER 2013

REVISED/REVIEWED BY: MLR

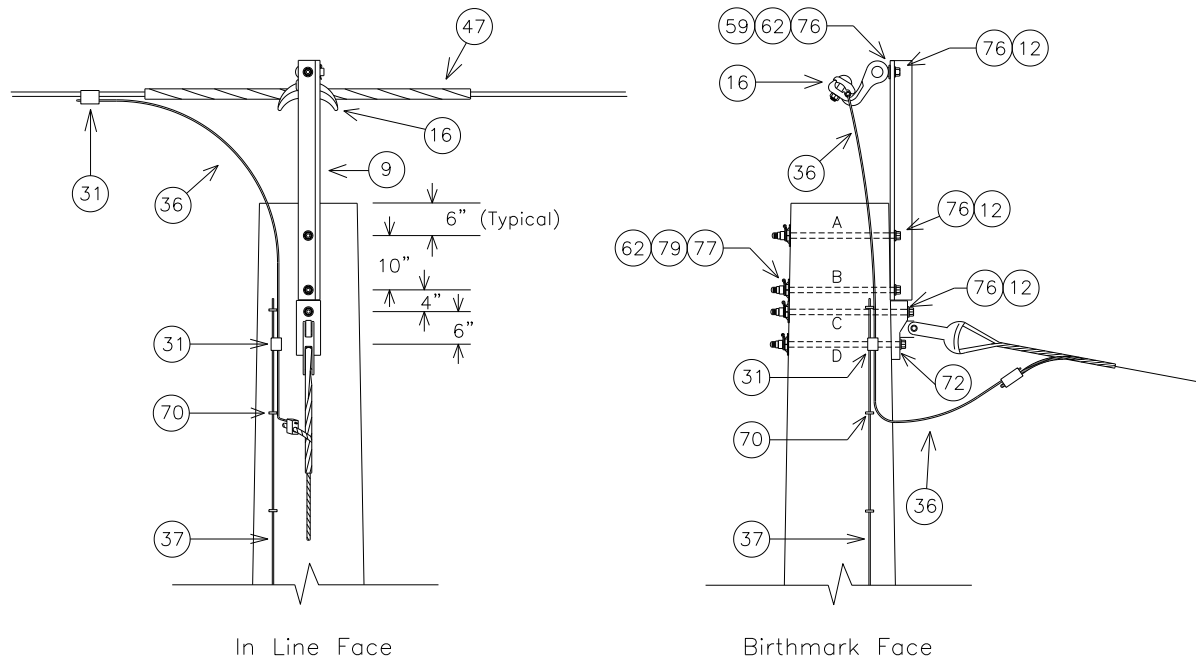
APPROVED BY: KKR

SHIELDS

SH-21

SWBAF

SHIELD FOR WOOD POLES BAYONET WITH ANGLE CLAMP, FRONT GUYED



NOTE: SEE MBA1 FOR BOLT ASSEMBLY DETAILS

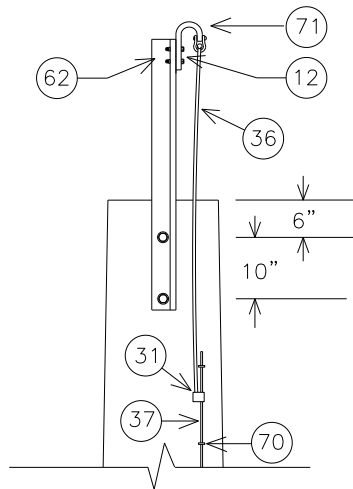
	'A'	'B'	'C'	'D'
MINIMUM REQUIRED BOLT LENGTH (INCHES)	11.5	11.6	13.0	12.2

NOTE: BOLT CALCULATIONS ASSUME A 9 INCH POLE TOP DIAMETER;
USE $\frac{3}{4}$ " BOLTS FOR A&B AND $\frac{7}{8}$ " FOR BOLTS C&D

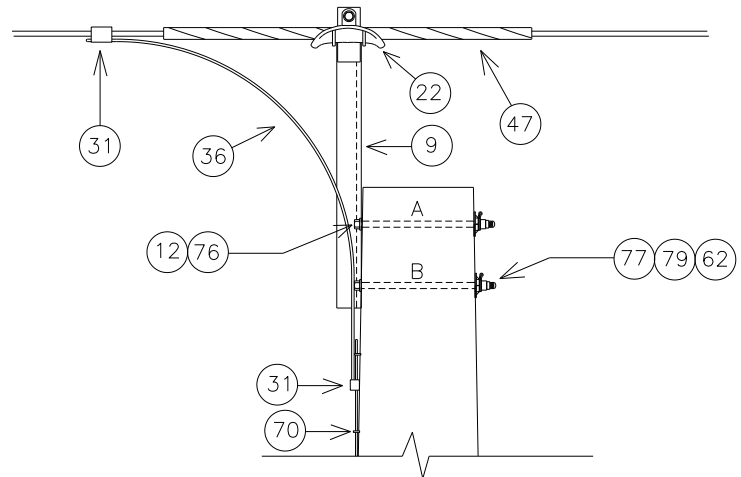
NO.	ITEM ID	QTY	DESCRIPTION
9	BAYSW 003	1	BAYONET FOR SHIELD WIRE, CORNER 40"
12	BOLMS 032	1	MACHINE BOLT, 3/4" X 6", SQUARE HEAD, GALVANIZED, WITH SQUARE NUT ATTACHED
12	BOLMS 035	2	MACHINE BOLT, 3/4" X 12", SQUARE HEAD, GALVANIZED, WITH SQUARE NUT ATTACHED
12	BOLMS 048	2	MACHINE BOLT, 7/8" X 14", SQUARE HEAD, GALVANIZED, WITH SQUARE NUT ATTACHED
16	CLAAAN 001	1	ANGLE CLAMP FOR 4-SOL - 250MCM, 7000#
31	CNNCP 002	1	COMPRESSION CONNECTOR, TYPE H, (3#6 AW) TO (#4 CU); (.258 - .420) TO (.162 - .332), ALUMINUM
31	CNNCP 016	1	COMPRESSION CONNECTOR, #4 SOL. CU. TO #4 SOL. CU., COPPER
36	COBCO 028	4 ft	#4 SOLID BARE COPPER CONDUCTOR, SOFT DRAWN (50# COIL)
37	COBCW 014	80 ft	#4 COPPERWELD CONDUCTOR
47	GUALI 001	1	ALUMINUM LINE GUARD FOR 3#6AW, 23" LG, RANGE .347" - 366"
59	NUTUY 003	1	NUT EYE FOR 3/4" BOLT
62	NUTSL 004	3	SQUARE LOCK NUT FOR 3/4" BOLT, HOT DIPPED GALVANIZED
62	NUTSL 005	2	SQUARE LOCK NUT FOR 7/8" BOLT, HOT DIPPED GALVANIZED
70	STAPL 002	40	STAPLE, COPPERWELD, 3/8" X 1 1/2"
72	TEEDE 002	1	TEE, MALLIABLE IRON, FOR WOOD POLE APPLICATION, H.D.G., 6" HOLE SPACING
76	WASRD 005	4	ROUND WASHER FOR 3/4" BOLT, 2" DIAMETER, GALVANIZED
76	WASRD 006	2	ROUND WASHER FOR 7/8" BOLT, 2" DIAMETER, GALVANIZED
77	WASSC 001	2	SQUARE CURVED WASHER FOR 3/4" BOLTS, RIBBED MALLEABLE IRON-GALVANIZED, 4" X 4"
77	WASSC 002	2	SQUARE CURVED WASHER FOR 7/8" BOLTS, RIBBED MALLEABLE IRON-GALVANIZED, 4" X 4"
79	WASSP 005	2	SPRING WASHER FOR 3/4" BOLT, LEAF TYPE, GALVANIZED
79	WASSP 006	2	SPRING WASHER FOR 7/8" BOLT, LEAF TYPE, GALVANIZED

SWBSN

SHIELD FOR WOOD POLES
BAYONET WITH SUSPENSION CLAMP, NO GUY



In Line Face



Birthmark Face

NOTE: SEE MBA1 FOR BOLT ASSEMBLY DETAILS

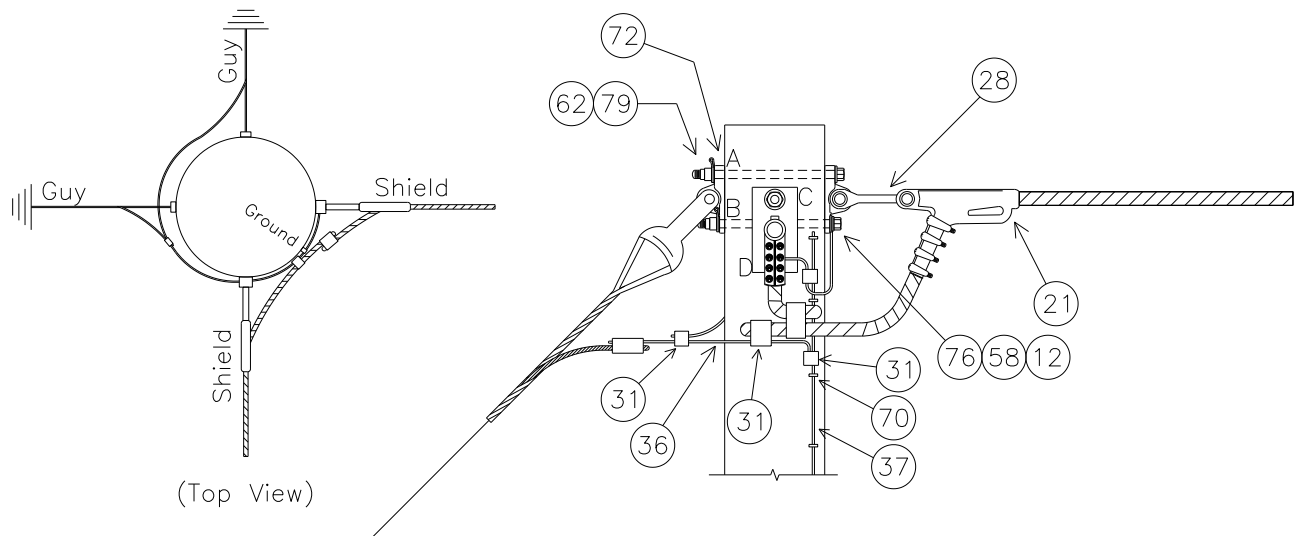
MINIMUM REQUIRED BOLT LENGTH 'A' (INCHES)	11.5
MINIMUM REQUIRED BOLT LENGTH 'B' (INCHES)	11.6

NOTE: BOLT CALCULATIONS ASSUME A 9 INCH POLE TOP DIAMETER

NO.	ITEM ID	QTY	DESCRIPTION
9	BAYSW 004	1	BAYONET FOR SHIELD WIRE, STRAIGHT 40"
12	BOLMS 001	0	MACHINE BOLT, 1/2" X 2 1/2", PROVIDED WITH SUPSH001
12	BOLMS 035	2	MACHINE BOLT, 3/4" X 12", SQUARE HEAD, GALVANIZED, WITH SQUARE NUT ATTACHED
22	CLASU 001	1	ALUMINUM SUSPENSION CLAMP FOR 3#6AW / 7#10AW, 15000#
31	CNNCP 002	1	COMPRESSION CONNECTOR, TYPE H, (3#6 AW) TO (#4 CU); (.258 - .420) TO (.162 - .332), ALUMINUM
31	CNNCP 016	1	COMPRESSION CONNECTOR, #4 SOL. CU. TO #4 SOL. CU., COPPER
36	COBCO 028	4 ft	#4 SOLID BARE COPPER CONDUCTOR, SOFT DRAWN
37	COBCW 014	80 ft	#4 COPPERWELD CONDUCTOR
47	GUALI 001	1	ALUMINUM LINE GUARD FOR 3#6AW, 23" LG, RANGE .347" - 366"
62	NUTSL 002	0	SQUARE LOCK NUT FOR 1/2" BOLT, PROVIDED WITH SUPSH001
62	NUTSL 004	2	SQUARE LOCK NUT FOR 3/4" BOLT, HOT DIPPED GALVANIZED
70	STAPL 002	40	STAPLE, COPPERWELD, 3/8" X 1 1/2"
71	SUPSH 001	1	SUPPORT, SHIELD WIRE, GALVANIZED, WITH TWO 2 1/2" MACHINE BOLTS AND LOCK NUTS
76	WASRD 005	2	ROUND WASHER FOR 3/4" BOLT, 1 3/4" DIAMETER, GALVANIZED
77	WASSC 001	2	SQUARE CURVED WASHER FOR 3/4" BOLTS, RIBBED MALLEABLE IRON-GALVANIZED, 4" X 4"
79	WASSP 005	2	SPRING WASHER FOR 3/4" BOLT, LEAF TYPE, GALVANIZED

SWDI90DG

SHIELD FOR WOOD POLES
DOUBLE INLINE 90° WITH DOUBLE GUY



NOTE: SEE MISCELLANEOUS DETAIL MBA1 FOR BOLT ASSEMBLY DETAILS

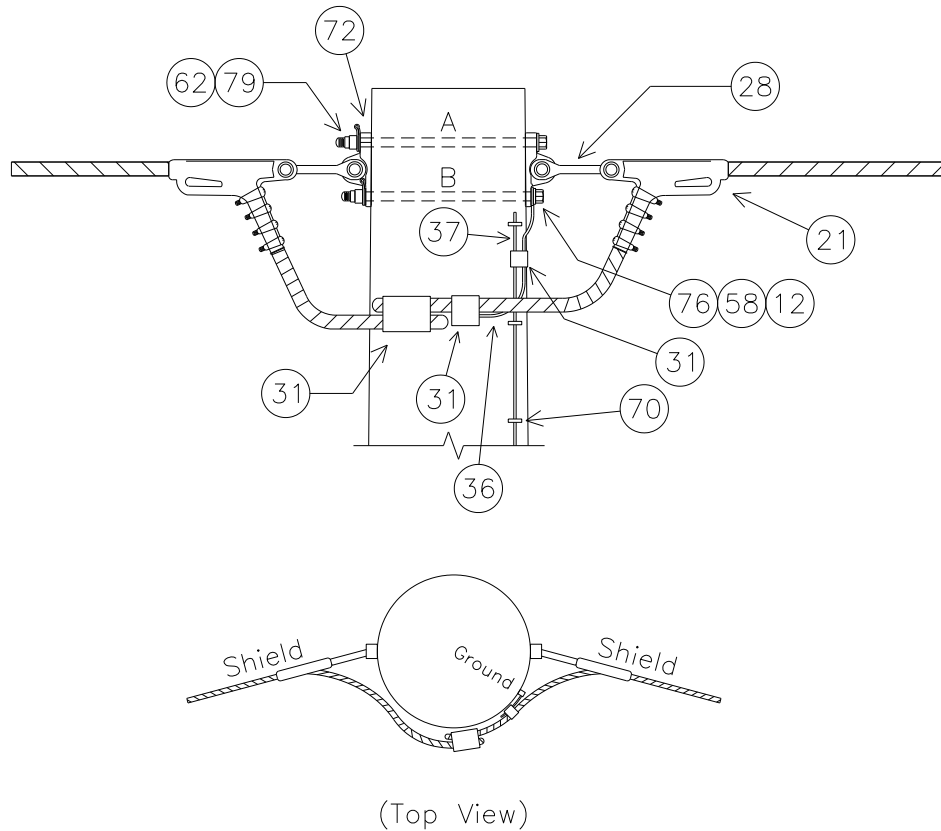
MINIMUM REQUIRED BOLT LENGTH 'A' (INCHES)	13.7
MINIMUM REQUIRED BOLT LENGTH 'B' (INCHES)	12.5
MINIMUM REQUIRED BOLT LENGTH 'C' (INCHES)	13.7
MINIMUM REQUIRED BOLT LENGTH 'D' (INCHES)	12.6

NOTE: BOLT CALCULATIONS ASSUME A 9 INCH POLE TOP DIAMETER

NO.	ITEM ID	QTY	DESCRIPTION
12	BOLMS 036	4	MACHINE BOLT, 3/4" X 14", SQUARE HEAD, GALVANIZED, WITH SQUARE NUT ATTACHED
21	CLAQD 008	2	DEADEND CLAMP (.2 - .55") 19,000# STRENGTH, GAP = 7/8", PIN = 5/8" CLAMP, DUCT. IRON, 3#6 AW
28	CLETE 001	2	TOWER Y-EYE CLEVIS, 3/4" PIN, 5/8" EYE THICKNESS, 11/16" EYE DIAMETER H.D.G. 90 DEG
31	CNNCP 002	1	COMPRESSION CONNECTOR, TYPE H (3#6 AW) TO (#4 CU), ALUMINUM
31	CNNCP 003	1	COMPRESSION CONNECTOR, TYPE H, (3#6 AW) TO (3#6 AW), ALUMINUM
31	CNNCP 016	2	COMPRESSION CONNECTOR, #4 SOL. CU. TO #4 SOL. CU., COPPER
36	COBCO 028	9 ft	#4 SOLID BARE COPPER CONDUCTOR, SOFT DRAWN
37	COBCW 014	80 ft	#4 COPPERWELD CONDUCTOR
58	LUGGR 001	2	LUG FOR 3/4" BOLT, #4 SOLID WIRE, TIN PLATED COPPER COMPRESSION
62	NUTSL 004	4	SQUARE LOCK NUT FOR 3/4" BOLT, H.D.G.
70	STAPL 002	40	STAPLE, COPPERWELD, 3/8" X 1 1/2"
72	TEEDE 002	4	TEE, MALLIABLE IRON, FOR WOOD POLE APPLICATION, H.D.G., 6" HOLE SPACING
76	WASRD 005	4	ROUND WASHER FOR 3/4" BOLT, 2" DIAMETER, GALVANIZED
79	WASSP 005	4	SPRING WASHER FOR 3/4" BOLT, LEAF TYPE, GALVANIZED

SWDI150

SHIELD FOR WOOD POLES
DOUBLE INLINE 150°



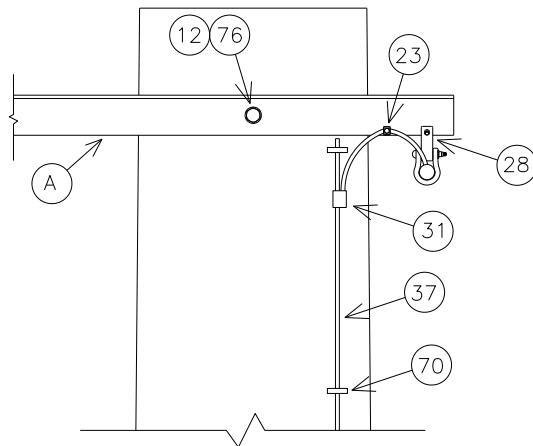
NOTE: SEE MISCELLANEOUS DETAIL MBA1 FOR BOLT ASSEMBLY DETAILS

UPPER BOLT LENGTH (INCHES)	13.7
LOWER BOLT LENGTH (INCHES)	12.3

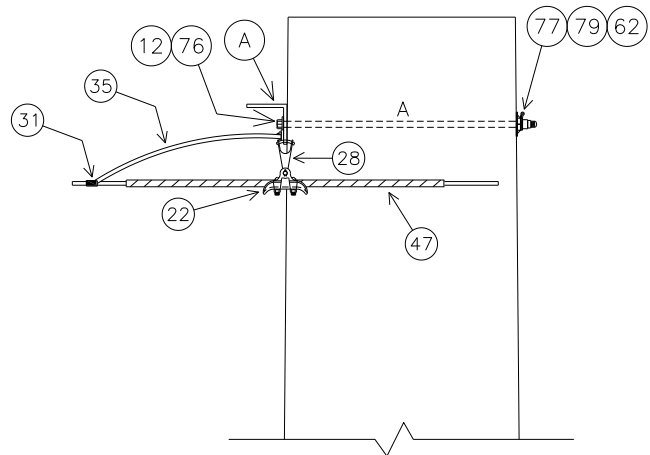
NOTE: BOLT CALCULATIONS ASSUME A 9 INCH POLE TOP DIAMETER

NO.	ITEM ID	QTY	DESCRIPTION
12	BOLMS 036	2	MACHINE BOLT, 3/4" X 14", SQUARE HEAD, GALVANIZED, WITH SQUARE NUT ATTACHED
21	CLAQD 008	2	DEADEND CLAMP (.2 - .55") 19,000# STRENGTH, GAP = 7/8", PIN = 5/8" CLAMP, DUCT. IRON, 3#6 AW
28	CLETE 001	2	TOWER Y-EYE CLEVIS, 3/4" PIN, 5/8" EYE THICKNESS, 11/16" EYE DIAMETER H.D.G. 90 DEG
31	CNNCP 002	1	COMPRESSION CONNECTOR, TYPE H (3#6 AW) TO (#4 CU), ALUMINUM
31	CNNCP 003	1	COMPRESSION CONNECTOR, TYPE H, (3#6 AW) TO (3#6 AW), ALUMINUM
31	CNNCP 016	1	COMPRESSION CONNECTOR, #4 SOL. CU. TO #4 SOL. CU., COPPER
36	COBCO 028	3 ft	#4 SOLID BARE COPPER CONDUCTOR, SOFT DRAWN
37	COBCW 014	80 ft	#4 COPPERWELD CONDUCTOR
58	LUGGR 001	1	LUG FOR 3/4" BOLT, #4 SOLID WIRE, TIN PLATED COPPER COMPRESSION
62	NUTSL 004	2	SQUARE LOCK NUT FOR 3/4" BOLT, H.D.G.
70	STAPL 002	40	STAPLE, COPPERWELD, 3/8" X 1 1/2"
72	TEEDE 002	2	TEE, MALLIABLE IRON, FOR WOOD POLE APPLICATION, H.D.G., 6" HOLE SPACING
76	WASRD 005	2	ROUND WASHER FOR 3/4" BOLT, 2" DIAMETER, GALVANIZED
79	WASSP 005	2	SPRING WASHER FOR 3/4" BOLT, LEAF TYPE, GALVANIZED

SWHS

SHIELD FOR WOOD POLES
HORIZONTAL SUSPENSION

Front View



Side View

BOLT LENGTH 'A' (INCHES)

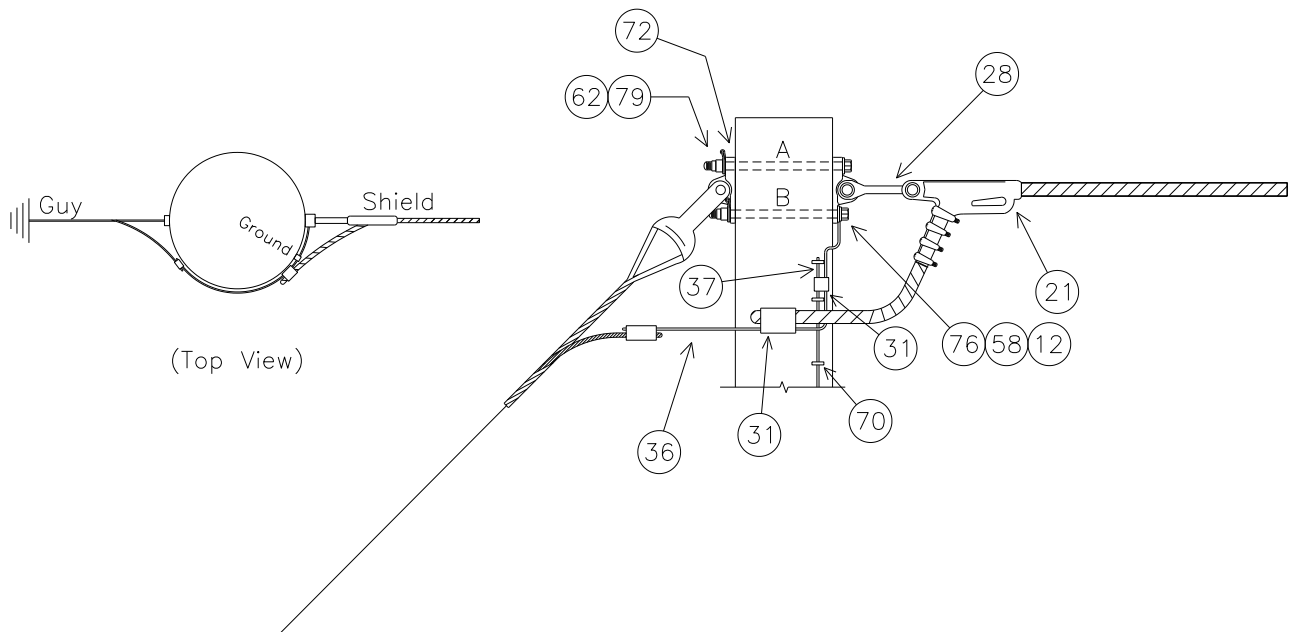
11.6

NOTE: BOLT CALCULATIONS ASSUME A 9 INCH POLE TOP DIAMETER

NO.	ITEM ID	QTY	DESCRIPTION
A	NON-STOCK	1	ANGLE STEEL, 3" X 3" X 1/4" X 13', PROVIDED BY CONTRACTOR
12	BOLMS 035	2	MACHINE BOLT, 3/4" X 12", SQUARE HEAD, GALVANIZED, WITH SQUARE NUT ATTACHED
21	CLAQD 008	2	DEADEND CLAMP (.2 - .55") 19,000# STRENGTH, GAP = 7/8", PIN = 5/8" CLAMP, DUCT. IRON, 3#6 AW
22	CLASU 001	2	ALUMINUM SUSPENSION CLAMP FOR 3#6AW / 7#10AW, 15000#
23	CLASW 001	2	SHIELD WIRE CLAMP FOR 3#6AW / 3#7CU, GALV.
28	CLETE 004	2	TOWER Y-EYE CLEVIS, 90 DEGREE, 3/4" PIN, 5/8" EYE THICKNESS, H.D.G.
31	CNNCP 002	2	COMPRESSION CONNECTOR, TYPE H (3#6 AW) TO (#4 CU), ALUMINUM
31	CNNCP 016	2	COMPRESSION CONNECTOR, #4 SOL. CU. TO #4 SOL. CU., COPPER
35	COBAS 005	6 ft	CONDUCTOR, 3#6 AW
37	COBCW 014	180 ft	#4 COPPERWELD CONDUCTOR
47	GUALI 001	2	ALUMINUM LINE GUARD FOR 3#6AW, 23" LG, RANGE .347" - 366"
58	LUGGR 001	2	LUG FOR 3/4" BOLT, #4 SOLID WIRE, TIN PLATED COPPER COMPRESSION
62	NUTSL 004	2	SQUARE LOCK NUT FOR 3/4" BOLT, H.D.G.
70	STAPL 002	90	STAPLE, COPPERWELD, 3/8" X 1 1/2"
76	WASRD 005	2	ROUND WASHER FOR 3/4" BOLT, 2" DIAMETER, GALVANIZED
77	WASSC 001	2	SQUARE CURVED WASHER FOR 3/4" BOLTS, GALVANIZED, 4" X 4" SIZE
79	WASSP 005	2	SPRING WASHER FOR 3/4" BOLT, LEAF TYPE, GALVANIZED

SWSIG

SHIELD FOR WOOD POLES SINGLE INLINE, GUYED



NOTE: SEE MISCELLANEOUS DETAIL MBA1 FOR BOLT ASSEMBLY DETAILS

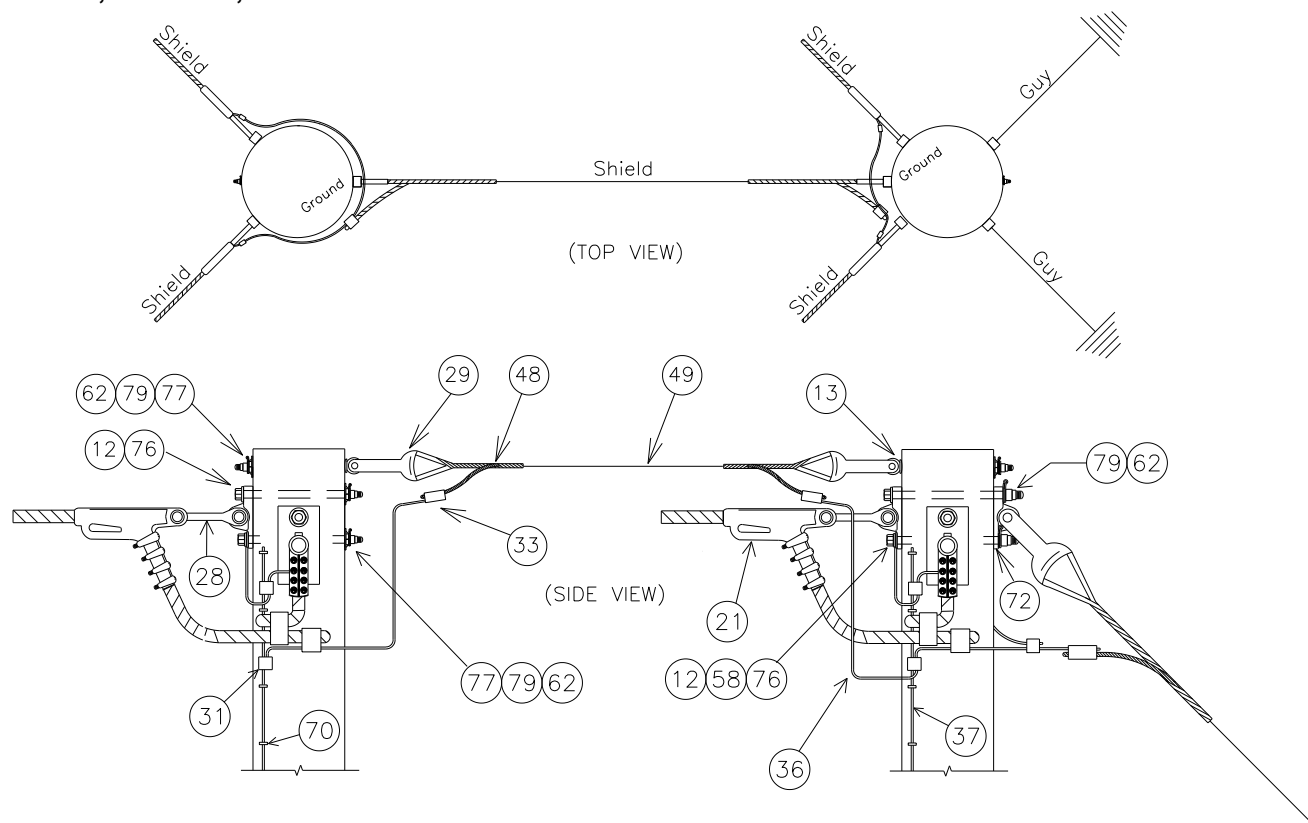
UPPER BOLT LENGTH (INCHES)	13.7
LOWER BOLT LENGTH (INCHES)	12.3

NOTE: BOLT CALCULATIONS ASSUME A 9 INCH POLE TOP DIAMETER

NO.	ITEM ID	QTY	DESCRIPTION
12	BOLMS 036	2	MACHINE BOLT, 3/4" X 14", SQUARE HEAD, GALVANIZED, WITH SQUARE NUT ATTACHED
21	CLAQD 008	1	DEADEND CLAMP (.2 - .55") 19,000# STRENGTH, GAP = 7/8", PIN = 5/8" CLAMP, DUCT. IRON, 3#6 AW
28	CLETE 001	1	TOWER Y-EYE CLEVIS, 3/4" PIN, 5/8" EYE THICKNESS, 11/16" EYE DIAMETER H.D.G. 90 DEG
31	CNNCP 002	1	COMPRESSION CONNECTOR, TYPE H (3#6 AW) TO (#4 CU), ALUMINUM
31	CNNCP 016	1	COMPRESSION CONNECTOR, #4 SOL. CU. TO #4 SOL. CU., COPPER
36	COBCO 028	3 ft	#4 SOLID BARE COPPER CONDUCTOR, SOFT DRAWN
37	COBCW 014	80 ft	#4 COPPERWELD CONDUCTOR
58	LUGGR 001	1	LUG FOR 3/4" BOLT, #4 SOLID WIRE, TIN PLATED COPPER COMPRESSION
62	NUTSL 004	2	SQUARE LOCK NUT FOR 3/4" BOLT, H.D.G.
70	STAPL 002	40	STAPLE, COPPERWELD, 3/8" X 1 1/2"
72	TEEDE 002	2	TEE, MALLIABLE IRON, FOR WOOD POLE APPLICATION, H.D.G., 6" HOLE SPACING
76	WASRD 005	2	ROUND WASHER FOR 3/4" BOLT, 2" DIAMETER, GALVANIZED
79	WASSP 005	2	SPRING WASHER FOR 3/4" BOLT, LEAF TYPE, GALVANIZED

SW2PH90

SHIELD FOR WOOD POLES
2-POLE, H-FRAME, 90° TURN

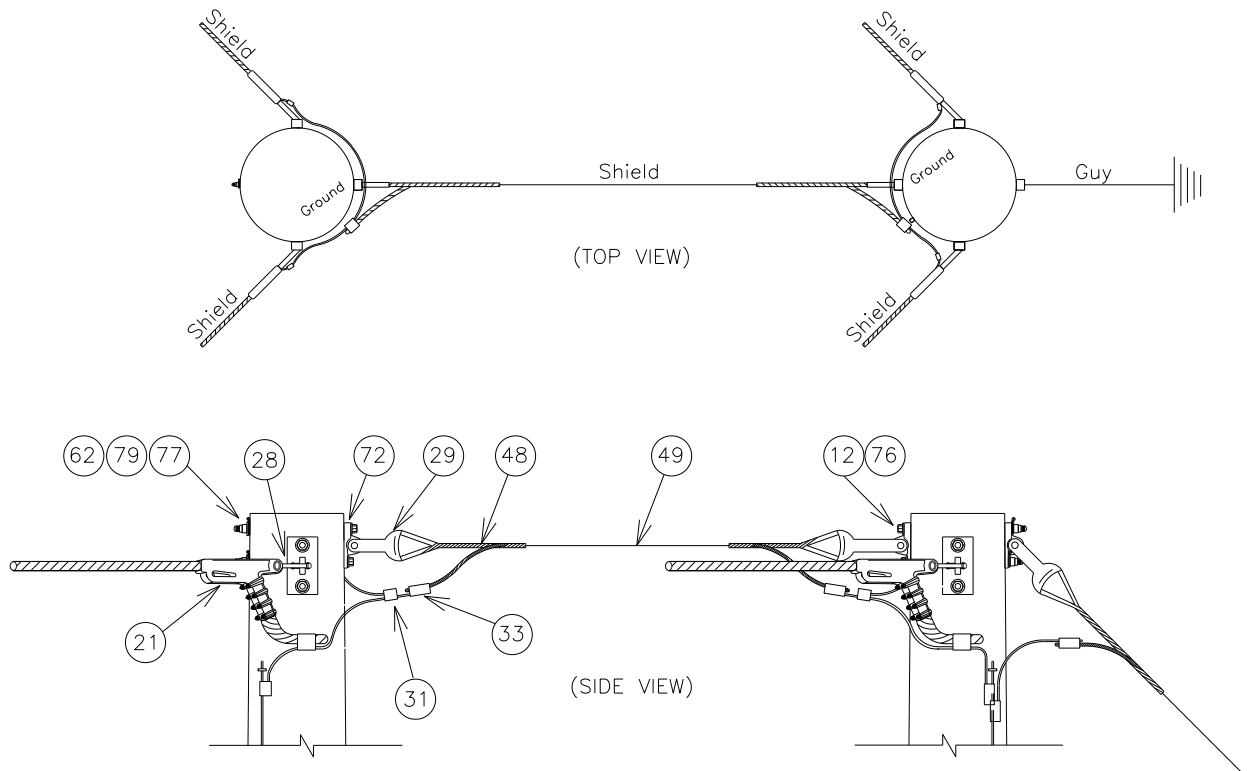


NOTE: DRILL HOLES FOR GUY SPAN AS PART OF THIS SUBSTRUCTURE
BOLT CALCULATIONS ASSUME A 9 INCH POLE TOP DIAMETER

NO.	ITEM ID	QTY	DESCRIPTION
12	BOLMS 036	8	MACHINE BOLT, 3/4" X 14", SQUARE HEAD, GALVANIZED, WITH SQUARE NUT ATTACHED
13	BOLSE 010	2	SHOULDER EYE BOLT, 3/4" X 12", WITH SQUARE NUT ATTACHED
21	CLAQD 008	4	DEADEND CLAMP (.2 - .55") 19,000# STRENGTH, GAP = 7/8", PIN = 5/8" CLAMP, DUCT. IRON, 3#6 AW
28	CLETE 001	4	TOWER Y-EYE CLEVIS, 3/4" PIN, 5/8" EYE THICKNESS, 11/16" EYE DIAMETER H.D.G.
29	CLETH 001	2	20,000# THIMBLE CLEVIS, GALVANIZED, PIN DIAMETER = 5/8", USED WITH 3/8" & 7/16"
31	CNNCP 002	2	COMPRESSION CONNECTOR, TYPE H (3#6 AW) TO (#4 CU), ALUMINUM
31	CNNCP 003	5	COMPRESSION CONNECTOR, #4 SOL. CU. TO #4 SOL. CU., COPPER
31	CNNCP 016	4	COMPRESSION CONNECTOR, #4 SOL. CU. TO #4 SOL. CU., COPPER
33	CNNTB 001	2	TWO BOLT PARALLEL CONNECTOR FOR CU TO CU CONNECTIONS, 1/0-4/0 MAIN, 8-4/0 TAP
36	COBCO 028	12 ft	#4 SOLID BARE COPPER CONDUCTOR, SOFT DRAWN
37	COBCW 014	160 ft	#4 COPPERWELD CONDUCTOR
48	GUYGR 002	2	GRIP, GUY, 7/16", GREEN, GALVANIZED
49	GUYST 006	10 ft	7/16" DIAMETER GUY STRAND, 7 PER STRAND, CLASS "B" GALV. (500' COIL)
58	LUGGR 001	3	LUG FOR 3/4" BOLT, #4 SOLID WIRE, TIN PLATTED COPPER COMPRESSION
62	NUTSL 004	10	SQUARE LOCK NUT FOR 3/4" BOLT, H.D.G.
70	STAPL 002	80	STAPLE, COPPERWELD, 3/8" X 1 1/2"
72	TEEDE 002	6	TEE, MALLIABLE IRON, FOR WOOD POLE APPLICATION, H.D.G., 6" HOLE SPACING
76	WASRD 005	8	ROUND WASHER FOR 3/4" BOLT, 2" DIAMETER, GALVANIZED
77	WASSC 001	6	SQUARE CURVED WASHER FOR 3/4" BOLTS, RIBBED MALLEABLE IRON-GALVANIZED, 4" X 4"
79	WASSP 005	6	SPRING WASHER FOR 3/4" BOLT, LEAF TYPE, GALVANIZED

SW2PH135

SHIELD FOR WOOD POLES
2-POLE, H-FRAME, 135° TURN



DEADEND INSULATOR	SINGLE TEE (1)	DOUBLE TEE (3)
UPPER BOLT 'A' LENGTH (INCHES)	12.8	13.7
LOWER BOLT 'B' LENGTH (INCHES)	12.1	12.2

NOTE: BOLT CALCULATIONS ASSUME A 9 INCH POLE TOP DIAMETER

NO.	ITEM ID	QTY	DESCRIPTION
12	BOLMS 036	8	MACHINE BOLT, 3/4" X 14", SQUARE HEAD, GALVANIZED, WITH SQUARE NUT ATTACHED
21	CLAQD 008	4	DEADEND CLAMP (.2 - .55") 19,000# STRENGTH, GAP = 7/8", PIN = 5/8" CLAMP, DUCT. IRON, 3#6 AW
28	CLETE 001	4	TOWER Y-EYE CLEVIS, 3/4" PIN, 5/8" EYE THICKNESS, 11/16" EYE DIAMETER H.D.G.
29	CLETH 001	2	20,000# THIMBLE CLEVIS, GALVANIZED, PIN DIAMETER = 5/8", USED WITH 3/8" & 7/16"
31	CNNCP 002	4	COMPRESSION CONNECTOR, TYPE H (3#6 AW) TO (#4 CU), ALUMINUM
31	CNNCP 016	4	COMPRESSION CONNECTOR, #4 SOL. CU. TO #4 SOL. CU., COPPER
33	CNNTB 001	2	TWO BOLT PARALLEL CONNECTOR FOR CU TO CU CONNECTIONS, 1/0-4/0 MAIN, 8-4/0 TAP
36	COBCO 028	10 ft	#4 SOLID BARE COPPER CONDUCTOR, SOFT DRAWN
37	COBCW 014	160 ft	#4 COPPERWELD CONDUCTOR
48	GUYGR 002	2	GRIP, GUY, 7/16", GREEN, GALVANIZED
49	GUYST 006	10 ft	7/16" DIAMETER GUY STRAND, 7 PER STRAND, CLASS "B" GALV. (500' COIL)
62	NUTSL 004	8	SQUARE LOCK NUT FOR 3/4" BOLT, H.D.G.
70	STAPL 002	80	STAPLE, COPPERWELD, 3/8" X 1 1/2"
72	TEEDE 002	7	TEE, MALLIABLE IRON, FOR WOOD POLE APPLICATION, H.D.G., 6" HOLE SPACING
76	WASRD 005	8	ROUND WASHER FOR 3/4" BOLT, 2" DIAMETER, GALVANIZED
77	WASSC 001	2	SQUARE CURVED WASHER FOR 3/4" BOLTS, RIBBED MALLEABLE IRON-GALVANIZED, 4" X 4"
79	WASSP 005	8	SPRING WASHER FOR 3/4" BOLT, LEAF TYPE, GALVANIZED

THIS PAGE IS INTENTIONALLY LEFT BLANK