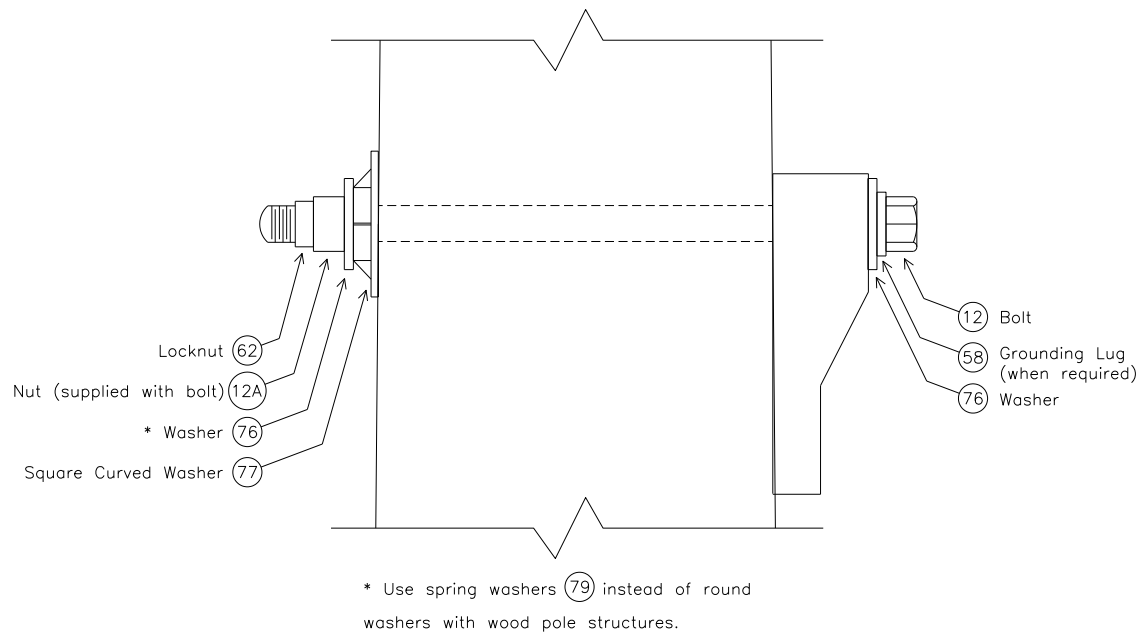


MISCELLANEOUS CONSTRUCTION PLATES & INFORMATION

	PAGE
BOLTS	
MBA1: Typical machine bolt assembly	STM-2
MBA2: Typical double arming bolt assembly	STM-3
MBA3: Typical bolt assembly for substation structures	STM-3
BRACING AND CROSSARMS	
WCD100: Double cross-arm for 10'0" center to center pole spacing	STM-4
XW100: X Cross bracing for 10'0" center to center pole spacing	STM-5
GUYING	
MGA: Guying with anchors	STM-6
MGN: Guying without anchors	STM-8
POLE DRILLING & INSERT DETAILS	
PGI: Ground insert details	STM-10
PSBI: Step bolt inserts	STM-11
UDA: Drilling detail for under-built distribution with phase A at 39'11"	STM-12
UDB: Drilling detail for under-built distribution with phase A at 42'5"	STM-13
POLE GROUNDING	
MPG-1C/S: Pole grounding details for concrete/steel poles	STM-14
MPG-1FT: Pole grounding details for steel pole foundations	STM-15
MPG-1WT: Pole grounding details for wood poles	STM-16
VIBRATION DAMPER PLATES	
MVDDI: Vibration damper (double) for dead-end insulators	STM-17
MVDDS: Vibration damper (double) for dead-end shield	STM-18
MVDTI: Vibration damper (double) for tangent insulators	STM-19
MVDTS: Vibration damper (double) for tangent shield	STM-20
MVSDI: Vibration damper (single) for dead-end insulators	STM-21
MVSDS: Vibration damper (single) for dead-end shield	STM-22
MVSTI: Vibration damper (single) for tangent insulators	STM-23
MVSTS: Vibration damper (single) for tangent shield	STM-24
IDENTIFICATION PLATES	
VN - VNC Pole Address	STM-25
VNCS: Vertical numbering for spun concrete poles.	STM-26
VNCW: Vertical numbering for wood poles.	STM-27

MBA1

TYPICAL MACHINE BOLT ASSEMBLY

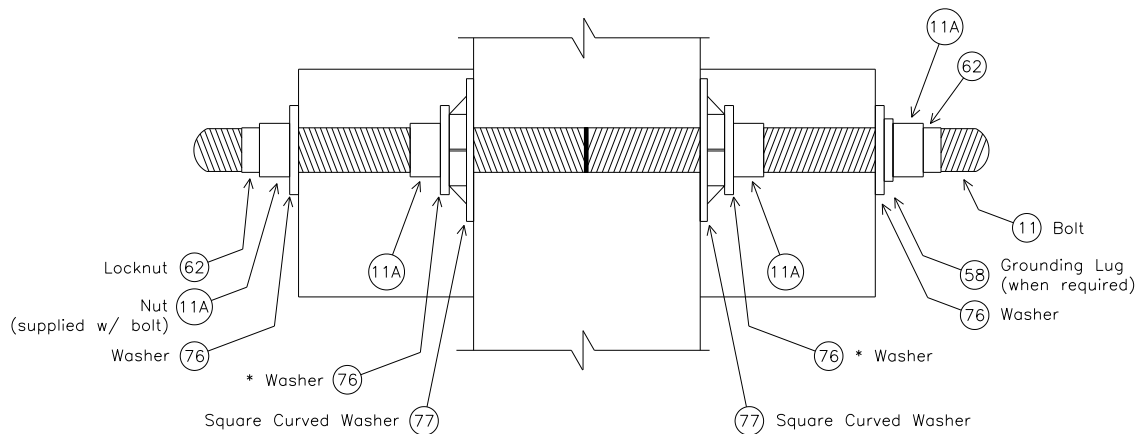


Notes: Bolts are sized to handle construction loads (i.e. hoist, etc.) which are often higher than normal loading loads.

1. Use 1" bolts to support insulators for dead-end full tension structures with 1590 conductor.
2. Use $\frac{7}{8}$ " bolts to support insulators for dead-end full tension structures with 954 or 556 conductors. Also use $\frac{7}{8}$ " bolts for all tangent structures and shield arms.
3. Use $\frac{3}{4}$ " bolts to support all dead-end shield brackets TEEDE 001, TEEDE 002.

MBA2

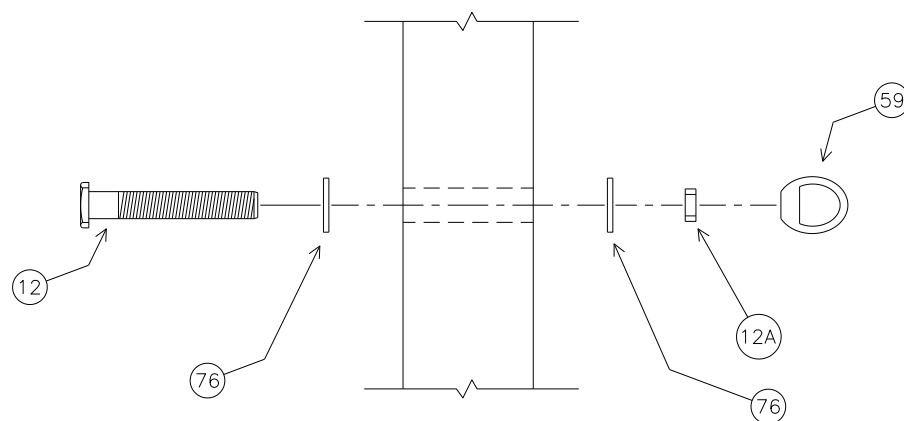
TYPICAL DOUBLE ARMING BOLT ASSEMBLY



* Use spring washers (79) instead of round washers with wood pole structures.

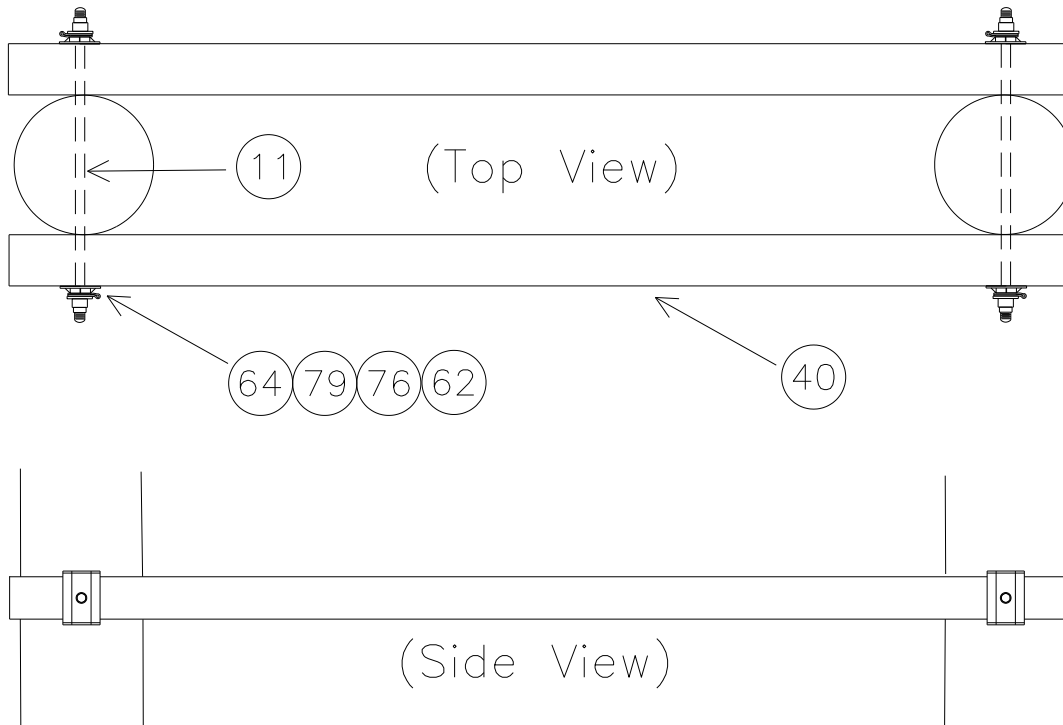
MBA3

TYPICAL BOLT ASSEMBLY FOR SUBSTATION STRUCTURES



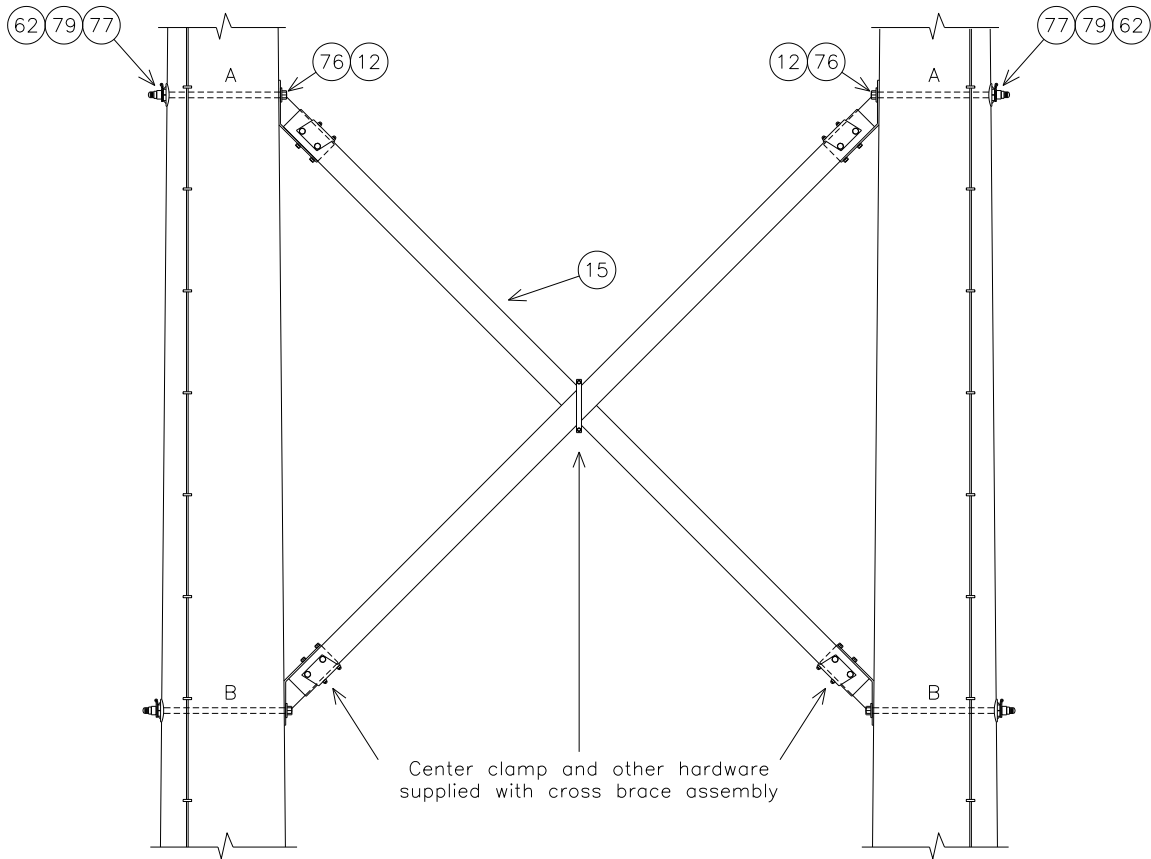
WCD100

WOOD CROSS ARM, DOUBLE
10'0" FEET CENTER TO CENTER



WC1 – 4 SETS

NO.	ITEM ID	QTY	DESCRIPTION
11	BOLDA 022	8	DOUBLE ARMING BOLT, 3/4" X 30", GALVANIZED, WITH 4 SQUARE NUT ATTACHED
40	CXAWO 008	8	CROSSARM, WOOD, 5 3/4" X 7 3/4" X 11'
62	NUTSL 004	16	SQUARE LOCK NUT FOR 3/4" BOLT, H.D.G.
64	PLACR 001	16	PLATE, CROSSARM REINFORCING
76	WASRD 005	16	ROUND WASHER FOR 3/4" BOLT, 2" DIAMETER, GALVANIZED
79	WASSP 005	16	SPRING WASHER FOR 3/4" BOLT, LEAF TYPE, GALVANIZED

XW100**X BRACE FOR WOOD POLES 10'0" CENTER TO CENTER SPACING**

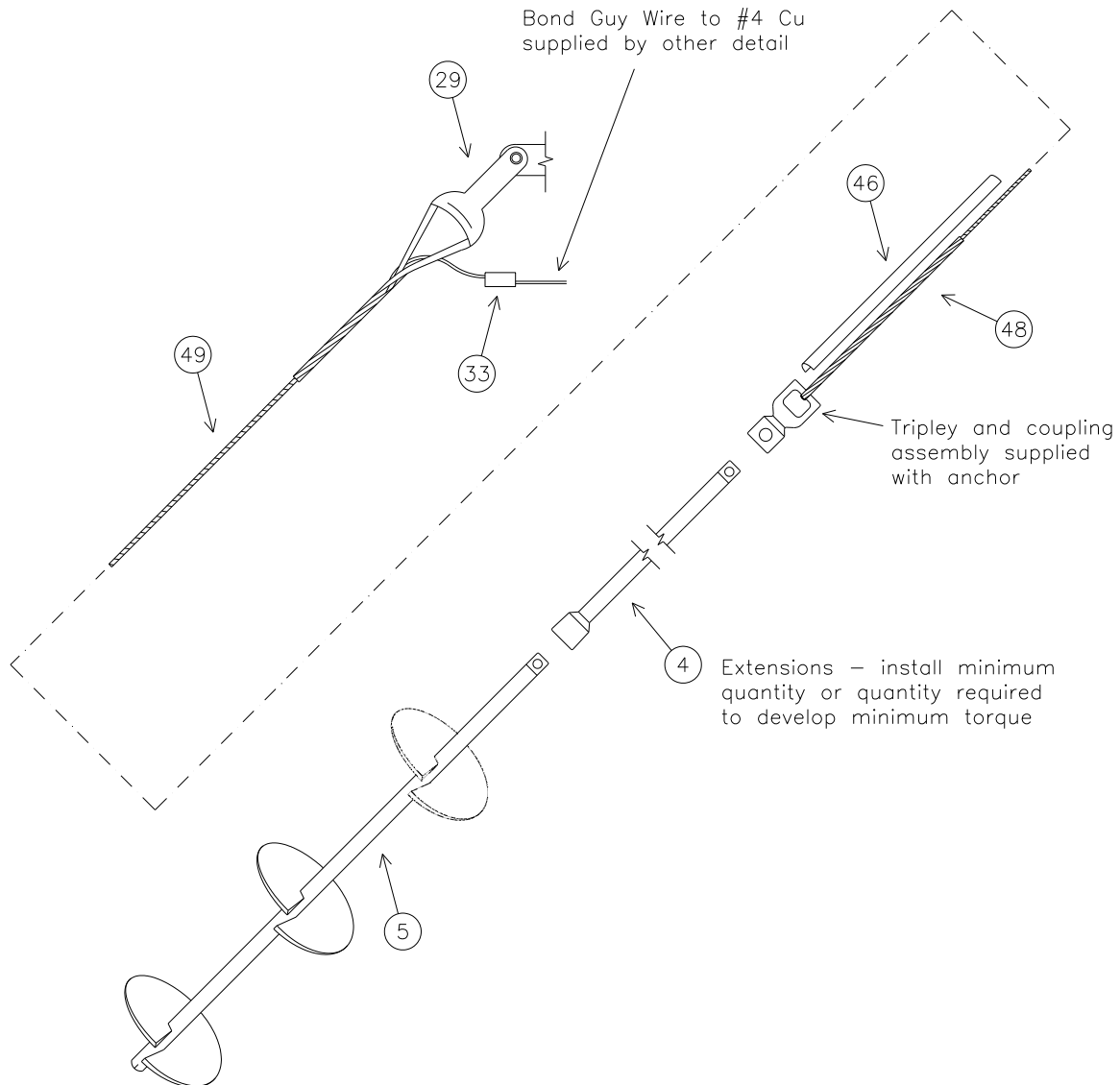
NOTE: DRILL ALL HOLES AS PART OF THIS SUBSTRUCTURE

XWHA3

NO.	ITEM ID	QTY	DESCRIPTION
12	BOLMS 050	4	MACHINE BOLT, 7/8" X 18", SQUARE HEAD, GALVANIZED, WITH SQUARE NUT ATTACHED
15	BRCCX 001	1 PR	BRACE, WOOD, X, 10' POLE SPACING CENTER TO CENTER
62	NUTSL 005	4	SQUARE LOCK NUT FOR 7/8" BOLT, H.D.G.
76	WASRD 006	4	ROUND WASHER FOR 7/8" BOLT, 2" DIAMETER, GALVANIZED
77	WASSC 002	4	SQUARE CURVED WASHER FOR 7/8" BOLTS, GALVANIZED, 4" X 4" SIZE
79	WASSP 006	4	SPRING WASHER FOR 7/8" BOLT, LEAF TYPE, GALVANIZED

MGA

GUYING WITH ANCHORS



GUY TYPE	MINIMUM REQUIRED 5' EXTENSIONS	MINIMUM INSTALLED TORQUE REQUIRED	MAXIMUM WORKING LOAD	ULTIMATE HOLDING POWER	GUY TYPE
E1-21	3	3,000 ft-lbs	12,000 lbs	20,800 lbs	E1-21
E1-35	3	3,000 ft-lbs	20,000 lbs	35,000 lbs	E1-35
E1-58	4	4,600 ft-lbs	32,000 lbs	58,000 lbs	E1-58

MGA PLATES

MGAE1-21

NO.	ITEM ID	QTY	DESCRIPTION
4	ANCEX 002	1	42" ANCHOR EXTENSION, GALVANIZED, MULTI-HELIX, 1-1/2" SQ SHAFT, W/ BOLT
4	ANCEX 003	*3	60" ANCHOR EXTENSION, GALVANIZED, MULTI-HELIX, 1-1/2" SQ SHAFT, W/ BOLT
5	ANCMS 002	1	5 FT. MULTI-HELIX (10", 11.3") SCREW ANCHOR, WITH TRIPLEYE AND COUPLING ASSEMBLY, HDG
29	CLETH 001	1	20,000# THIMBLE CLEVIS, GALVANIZED, PIN DIAMETER = 5/8", USED WITH 3/8" & 7/16"
33	CNNTB 001	1	TWO BOLT PARALLEL CONNECTOR FOR CU TO CU CONNECTIONS, 1/0-4/0 MAIN, 8-4/0 TAP
46	GUAGW 002	1	8' PVC YELLOW GUY GUARD 1 1/2" O.D.
48	GUYGR 002	2	GRIP, GUY, 7/16", GREEN, GALVANIZED
49	GUYST 006	100 ft	7/16" DIAMETER GUY STRAND, 7 PER STRAND, CLASS "B" GALV. (500' COIL)

MGAE1-35

NO.	ITEM ID	QTY	DESCRIPTION
4	ANCEX 002	1	42" ANCHOR EXTENSION, GALVANIZED, MULTI-HELIX, 1-1/2" SQ SHAFT, W/ BOLT
4	ANCEX 003	*3	60" ANCHOR EXTENSION, GALVANIZED, MULTI-HELIX, 1-1/2" SQ SHAFT, W/ BOLT
5	ANCMS 003	1	7.5 FT. MULTI-HELIX (10", 11.3, 13.5") SCREW ANCHOR, W/ TRIPLEYE AND COUPLING ASSEM., HDG
29	CLETH 002	1	40,000# THIMBLE CLEVIS, GALVANIZED, PIN DIAMETER = 3/4", USED WITH 1/2" & 9/16"
33	CNNTB 002	1	TWO BOLT PARALLEL CONNECTOR FOR CU TO CU CONNECTIONS, 250-350 MAIN, 8-350 TAP
46	GUAGW 003	1	8' PVC YELLOW GUY GUARD 2" O.D.
48	GUYGR 004	2	GRIP, GUY, 9/16", YELLOW, GALVANIZED
49	GUYST 007	100 ft	9/16" DIAMETER GUY STRAND, 7 PER STRAND, GALVANIZED, CLASS C. CODE 378 (1000' REEL)

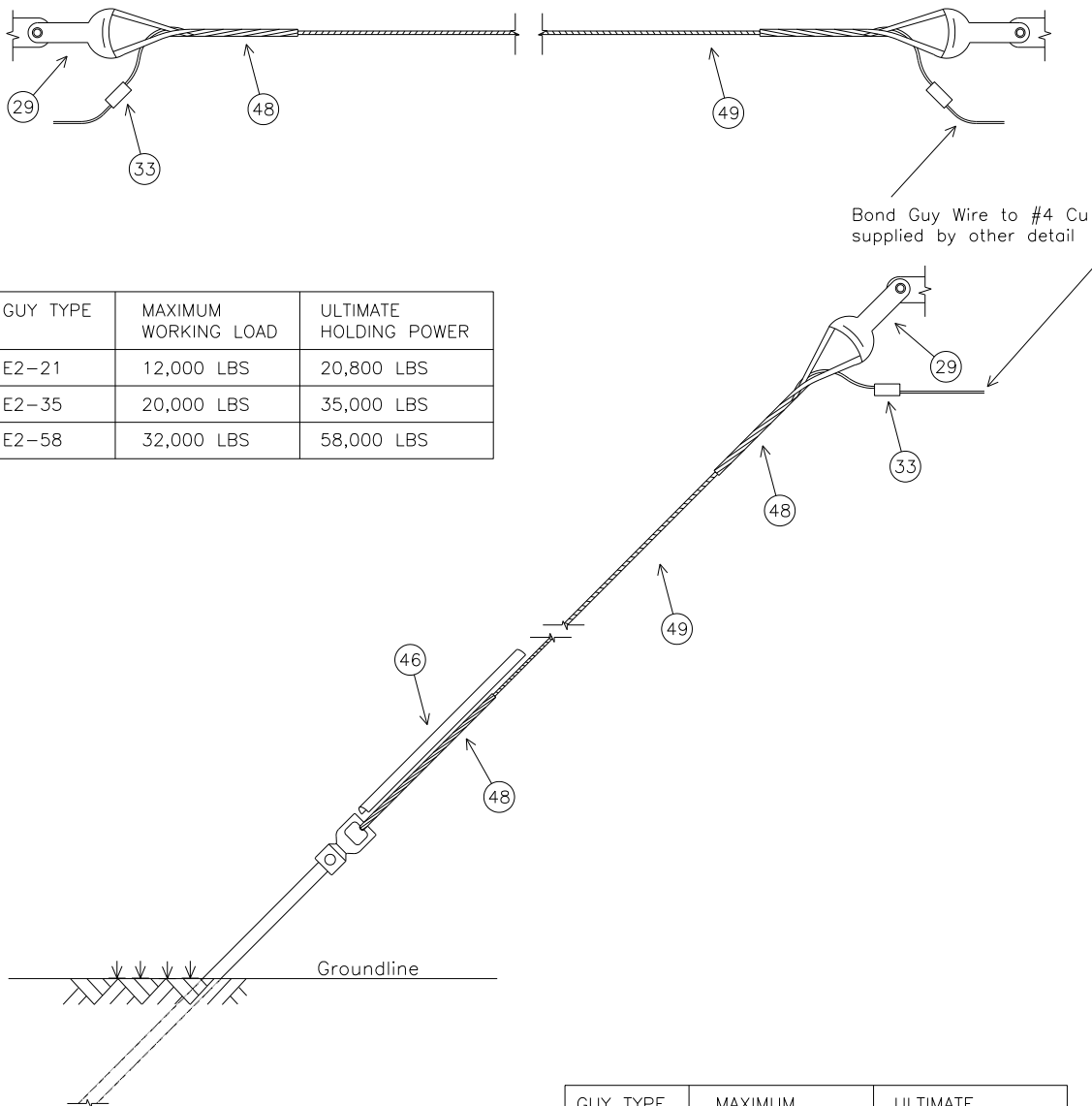
MGAE1-58

NO.	ITEM ID	QTY	DESCRIPTION
4	ANCEX 002	1	42" ANCHOR EXTENSION, GALVANIZED, MULTI-HELIX, 1-1/2" SQ SHAFT, W/ BOLT
4	ANCEX 003	*4	60" ANCHOR EXTENSION, GALVANIZED, MULTI-HELIX, 1-1/2" SQ SHAFT, W/ BOLT
5	ANCMS 003	1	7.5 FT. MULTI-HELIX (10", 11.3, 13.5") SCREW ANCHOR, W/ TRIPLEYE AND COUPLING ASSEM., HDG
29	CLETH 003	1	60,000# THIMBLE CLEVIS, GALVANIZED, PIN DIAMETER = 1", USED WITH 5/8" & 3/4"
33	CNNTB 003	1	TWO BOLT PARALLEL CONNECTOR FOR CU TO CU CONNECTIONS, 400-500 MAIN, 8-500 TAP
46	GUAGW 004	1	8' PVC YELLOW GUY GUARD 2 1/2" O.D.
48	GUYGR 005	2	GRIP, GUY, 3/4", ORANGE, GALVANIZED
49	GUYST 008	100 ft	3/4" DIAMETER GUY STRAND, 19 PER STRAND, GALVANIZED, CLASS "C" GALV. (1000'/REEL)

*THESE ITEMS ARE MINIMUM QUANTITIES, MORE MAY BE REQUIRED TO DEVELOP PROPER TORQUE

MGN

GUYING WITHOUT ANCHORS



GUY TYPE	MAXIMUM WORKING LOAD	ULTIMATE HOLDING POWER
E2-21	12,000 LBS	20,800 LBS
E2-35	20,000 LBS	35,000 LBS
E2-58	32,000 LBS	58,000 LBS

GUY TYPE	MAXIMUM WORKING LOAD	ULTIMATE HOLDING POWER
E1-22	12,000 LBS	20,800 LBS
E1-36	20,000 LBS	35,000 LBS
E1-59	32,000 LBS	58,000 LBS

MGN PLATES

E1

MGNE1-22

NO.	ITEM ID	QTY	DESCRIPTION
29	CLETH 001	1	20,000# THIMBLE CLEVIS, GALVANIZED, PIN DIAMETER = 5/8", USED WITH 3/8" & 7/16"
33	CNNTB 001	1	TWO BOLT PARALLEL CONNECTOR FOR CU TO CU CONNECTIONS, 1/0-4/0 MAIN, 8-4/0 TAP
46	GUAGW 002	1	8' PVC YELLOW GUY GUARD 1 1/2" O.D.
48	GUYGR 002	2	GRIP, GUY, 7/16", GREEN, GALVANIZED
49	GUYST 006	100 ft	7/16" DIAMETER GUY STRAND, 7 PER STRAND, CLASS "B" GALV. (500' COIL)

MGNE1-36

NO.	ITEM ID	QTY	DESCRIPTION
29	CLETH 002	1	40,000# THIMBLE CLEVIS, GALVANIZED, PIN DIAMETER = 3/4", USED WITH 1/2" & 9/16"
33	CNNTB 002	1	TWO BOLT PARALLEL CONNECTOR FOR CU TO CU CONNECTIONS, 250-350 MAIN, 8-350 TAP
46	GUAGW 003	1	8' PVC YELLOW GUY GUARD 2" O.D.
48	GUYGR 004	2	GRIP, GUY, 9/16", YELLOW, GALVANIZED
49	GUYST 007	100 ft	9/16" DIAMETER GUY STRAND, 7 PER STRAND, GALVANIZED, CLASS C. CODE 378 (1000' REEL)

MGNE1-59

NO.	ITEM ID	QTY	DESCRIPTION
29	CLETH 003	1	60,000# THIMBLE CLEVIS, GALVANIZED, PIN DIAMETER = 1", USED WITH 5/8" & 3/4"
33	CNNTB 003	1	TWO BOLT PARALLEL CONNECTOR FOR CU TO CU CONNECTIONS, 400-500 MAIN, 8-500 TAP
46	GUAGW 003	1	8' PVC YELLOW GUY GUARD 2" O.D.
48	GUYGR 005	2	GRIP, GUY, 3/4", ORANGE, GALVANIZED
49	GUYST 008	100 ft	3/4" DIAMETER GUY STRAND, 19 PER STRAND, GALVANIZED, CLASS "C" GALV. (1000'/REEL)

E2

MGNE2-21

NO.	ITEM ID	QTY	DESCRIPTION
29	CLETH 001	2	20,000# THIMBLE CLEVIS, GALVANIZED, PIN DIAMETER = 5/8", USED WITH 3/8" & 7/16"
33	CNNTB 001	2	TWO BOLT PARALLEL CONNECTOR FOR CU TO CU CONNECTIONS, 1/0-4/0 MAIN, 8-4/0 TAP
48	GUYGR 002	2	GRIP, GUY, 7/16", GREEN, GALVANIZED
49	GUYST 006	100 ft	7/16" DIAMETER GUY STRAND, 7 PER STRAND, CLASS "B" GALV. (500' COIL)

MGNE2-35

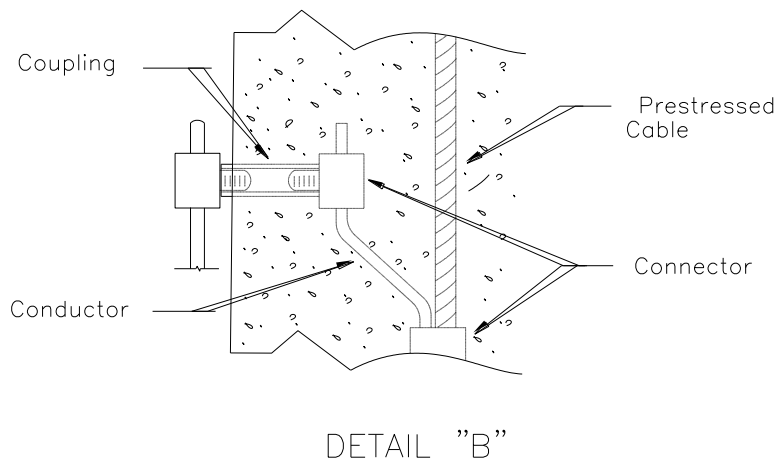
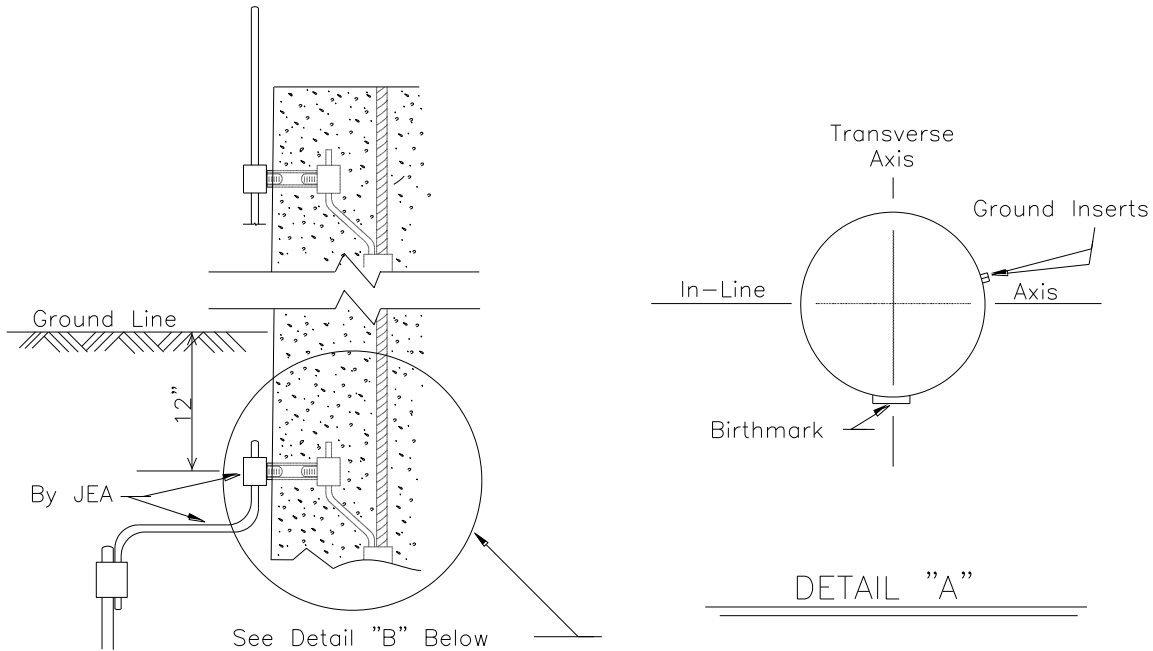
NO.	ITEM ID	QTY	DESCRIPTION
29	CLETH 002	2	40,000# THIMBLE CLEVIS, GALVANIZED, PIN DIAMETER = 3/4", USED WITH 1/2" & 9/16"
33	CNNTB 002	2	TWO BOLT PARALLEL CONNECTOR FOR CU TO CU CONNECTIONS, 250-350 MAIN, 8-350 TAP
48	GUYGR 004	2	GRIP, GUY, 9/16", YELLOW, GALVANIZED
49	GUYST 007	100 ft	9/16" DIAMETER GUY STRAND, 7 PER STRAND, GALVANIZED, CLASS C. CODE 378 (1000' REEL)

MGNE2-58

NO.	ITEM ID	QTY	DESCRIPTION
29	CLETH 003	2	60,000# THIMBLE CLEVIS, GALVANIZED, PIN DIAMETER = 1", USED WITH 5/8" & 3/4"
33	CNNTB 003	2	TWO BOLT PARALLEL CONNECTOR FOR CU TO CU CONNECTIONS, 400-500 MAIN, 8-500 TAP
48	GUYGR 005	2	GRIP, GUY, 3/4", ORANGE, GALVANIZED
49	GUYST 008	100 ft	3/4" DIAMETER GUY STRAND, 19 PER STRAND, GALVANIZED, CLASS "C" GALV. (1000'/REEL)

PGI

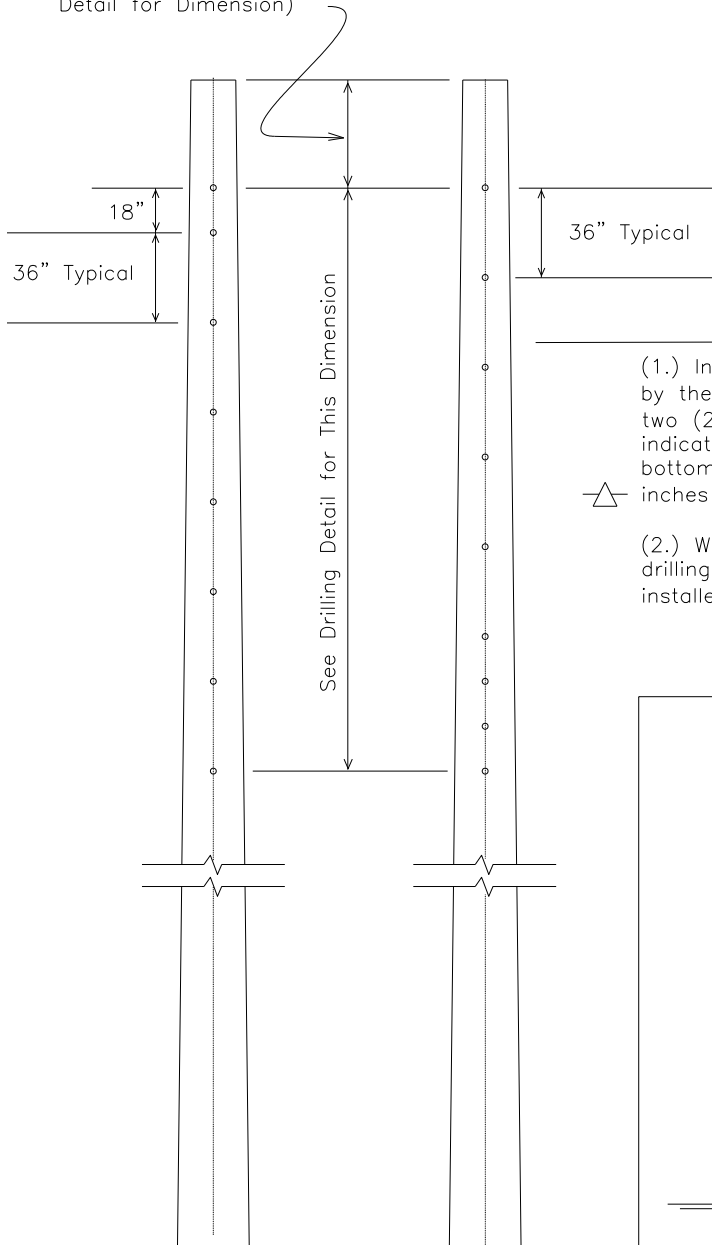
GROUND INSERT DETAILS



Note: Coupling and Internal Cable with Connectors To Be Furnished By Pole Manufacturer

PSBI STEP BOLT INSERTS

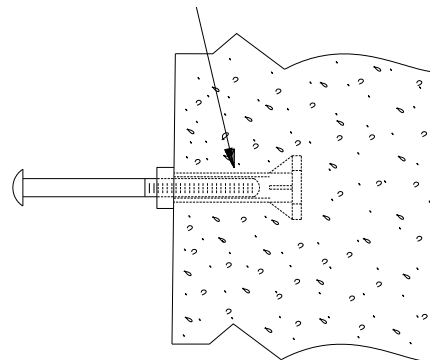
No Inserts In This Area.
(Refer to Pole Drilling
Detail for Dimension)



Notes

- (1.) In general, step inserts shall be installed by the pole manufacturer 18" on center on two (2) adjacent faces, within the area indicated on the pole drilling detail. The bottom insert shall be a minimum of 72 inches below "C" phase.
- (2.) When this symbol occurs on the pole drilling detail, the step inserts shall be installed on all four (4) pole faces.

Step Inserts Star
Catalog No. P56T



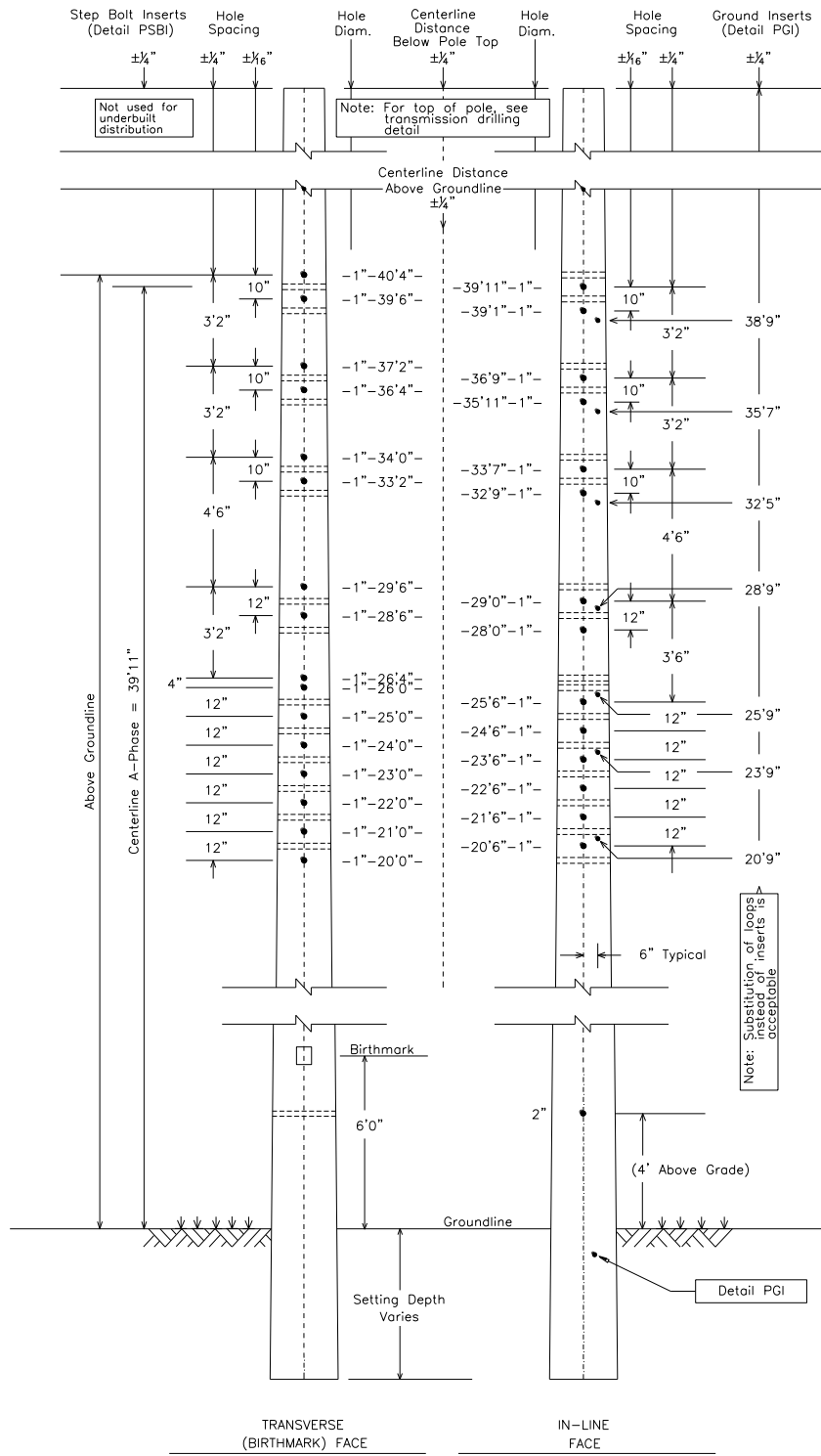
Step Bolt and Insert Installation

IN-LINE
FACE

TRANSVERSE
(BIRTHMARK) FACE

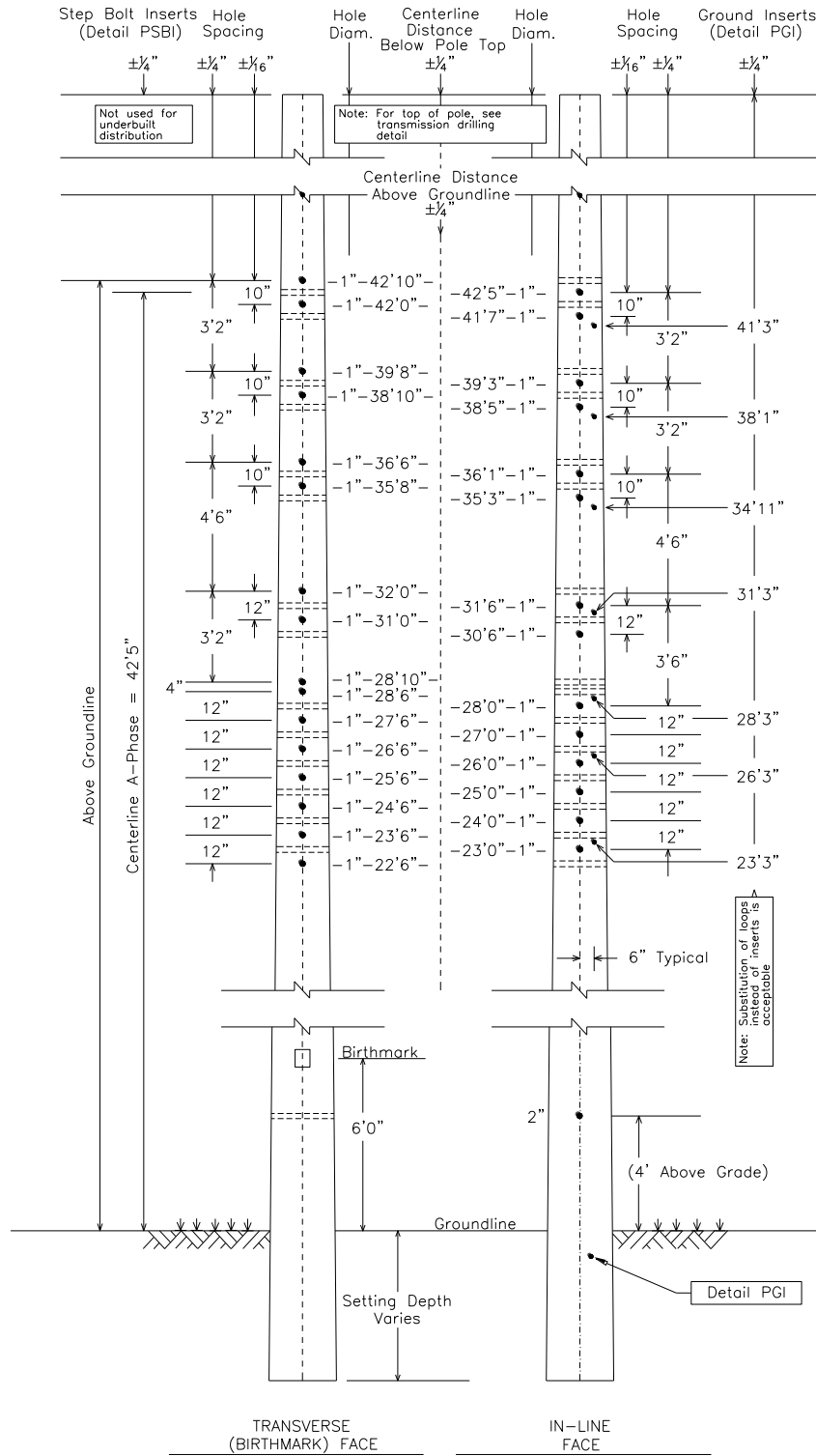
UDA

UNDER-BUILT DISTRIBUTION WITH PHASE A AT 39'11"



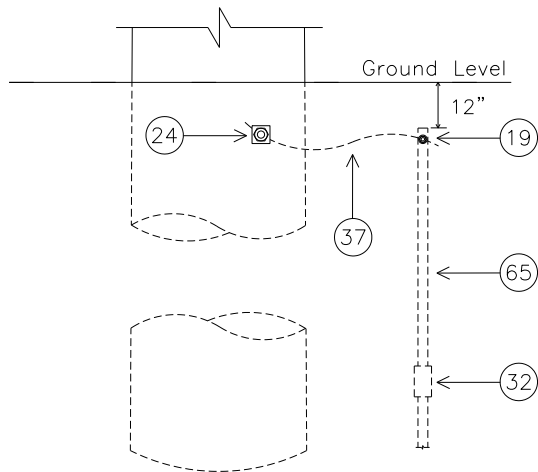
UDB

UNDER-BUILT DISTRIBUTION WITH PHASE A AT 42'5"

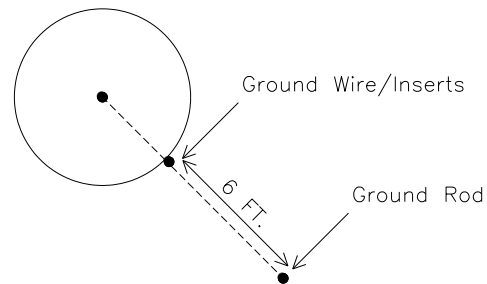


MPG-1C/S

POLE GROUNDING FOR DIRECT BURIED CONCRETE/STEEL POLES



Direct Buried Concrete or Steel Pole



TOP VIEW

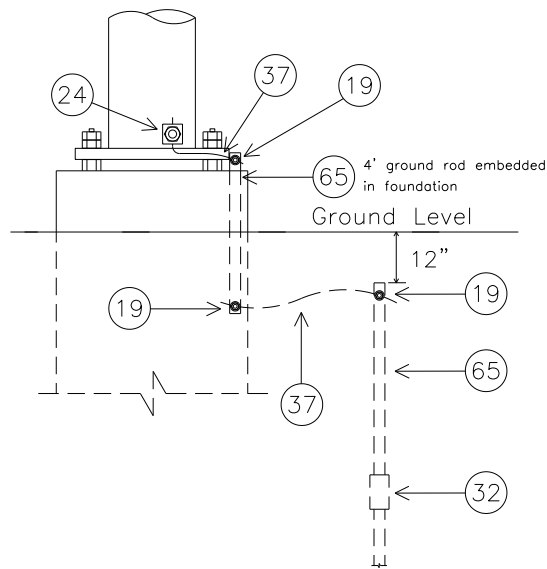
MPG-1C/S

NO.	ITEM ID	QTY	DESCRIPTION
19	CLAGR 001	1	5/8" GROUND ROD CLAMP, BRONZE
24	CLATG 001	1	CLAMP, TRANSFORMER TANK GROUND, BRONZE, #6 SOL - #1 STR
32	CNNGR 002	*2	THREADEDLESS COUPLING FOR 5/8" GROUND ROD, 2 3/4", BRONZE
37	COBCW 014	8ft	CONDUCTOR, #4 CW
65	RODGR 003	*3	5/8" GROUND ROD, "THREADLESS", L= 8'

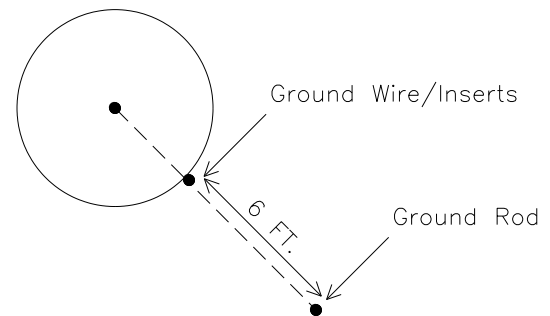
* These items are minimum quantities; more may be required for proper resistance.

MPG-1FT

POLE GROUNDING FOR STEEL POLES ON FOUNDATION



Steel Pole on Foundation



TOP VIEW

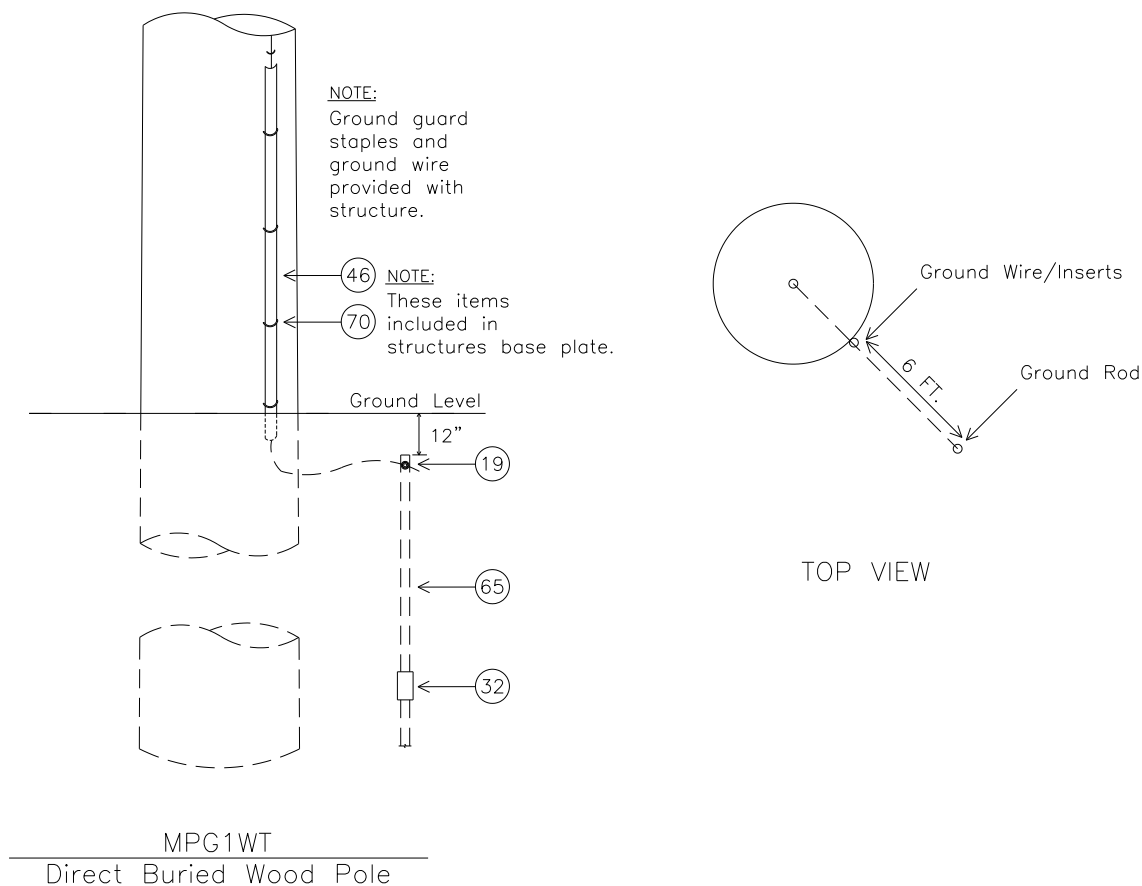
MPG-1FT

NO.	ITEM ID	QTY	DESCRIPTION
19	CLAGR 001	3	5/8" GROUND ROD CLAMP, BRONZE
24	CLATG 001	1	CLAMP, TRANSFORMER TANK GROUND, BRONZE, #6 SOL - #1 STR
32	CNNGR 002	*2	THREADEDLESS COUPLING FOR 5/8" GROUND ROD, 2 3/4", BRONZE
37	COBCW 014	8ft	CONDUCTOR, #4 CW
65	RODGR 003	*4	5/8" GROUND ROD, "THREADLESS", L= 8'

* These items are minimum quantities; more may be required for proper resistance.

MPG-1WT

POLE GROUNDING FOR WOOD POLES



MPG-1WT

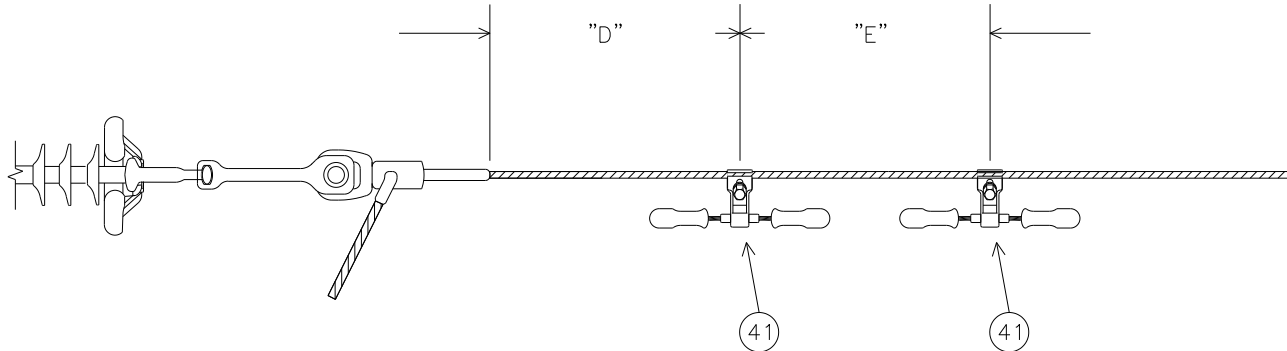
NO.	ITEM ID	QTY	DESCRIPTION
19	CLAGR 001	1	5/8" GROUND ROD CLAMP, BRONZE
32	CNNGR 002	*2	THREADLESS COUPLING FOR 5/8" GROUND ROD, 2 3/4", BRONZE
65	RODGR 003	*3	5/8" GROUND ROD, "THREADLESS", L= 8'

* These items are minimum quantities; more may be required for proper resistance.

MVDDI

VIBRATION DAMPER (DOUBLE) FOR DEAD-END INSULATORS

CONDUCTOR OPTIONS: 556ACSR, 954AAC, 954 ACSR, 1590 ACSR



DAMPER LOCATION		
CONDUCTOR SIZE	"D"	"E"
556 ACSR	2' 8"	N/A
954 AAC	3' 0"	2' 0"
954 ACSR	3' 11"	2' 8"
1590 ACSR	4' 11"	3' 4"

MVDDI*556S

NO.	ITEM ID	QTY	DESCRIPTION
41	DAPVI 003	1	VIBRATION DAMPER FOR 556-MCM ACSR

MVDDI*954A

NO.	ITEM ID	QTY	DESCRIPTION
41	DAPVI 004	2	VIBRATION DAMPER FOR 954-MCM ACSR

MVDDI*954S

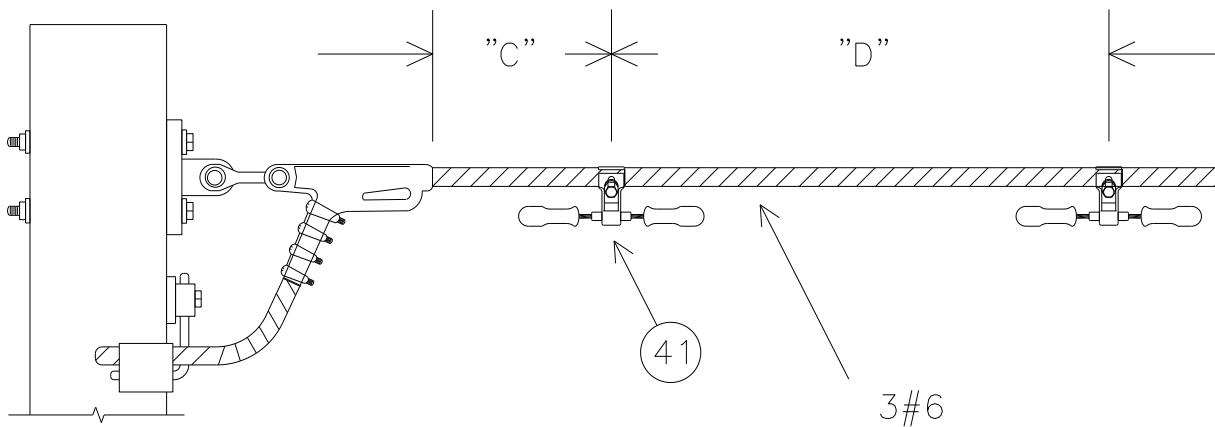
NO.	ITEM ID	QTY	DESCRIPTION
41	DAPVI 004	2	VIBRATION DAMPER FOR 954-MCM ACSR

MVDDI*1590

NO.	ITEM ID	QTY	DESCRIPTION
41	DAPVI 005	2	VIBRATION DAMPER FOR 1590-MCM ACSR

MVDDS

VIBRATION DAMPER (DOUBLE) FOR DEAD-END SHIELD



DAMPER LOCATION		
CONDUCTOR SIZE	"C"	"D"
3#6	1' 5"	1' 0"

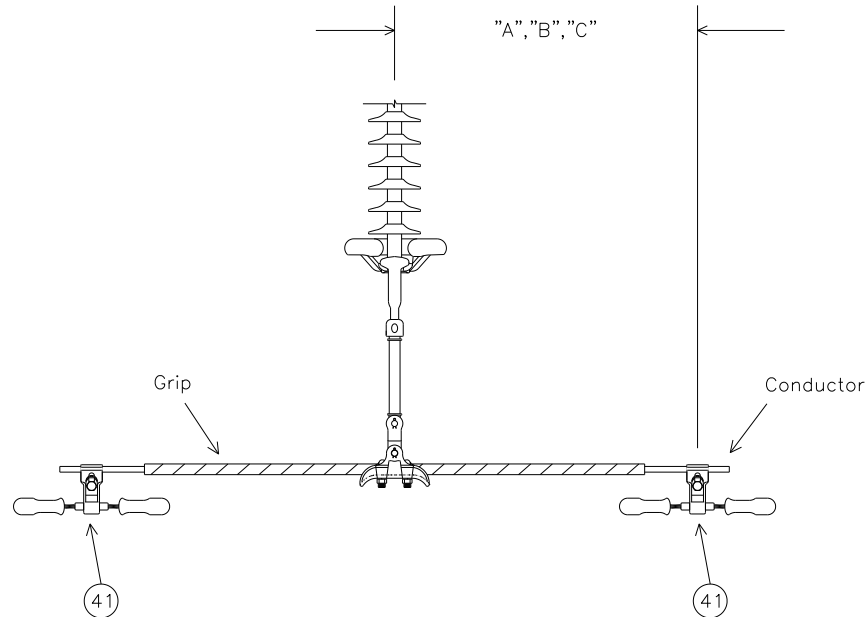
MVDDS

NO.	ITEM ID	QTY	DESCRIPTION
41	DAPVI001	2	VIBRATION DAMPER FOR 3#6AW & 7#10AW

MVDTI

VIBRATION DAMPER (DOUBLE) FOR TANGENT INSULATORS

CONDUCTOR OPTIONS: 556 ACSR, 954AAC, 954 ACSR, 1590 ACSR



DAMPER LOCATION			
CONDUCTOR SIZE	"A" WITHOUT ARMOR RODS OR AGS UNIT	"B" WITH ARMOR RODS	"C" WITH AGS UNIT
556 ACSR	2' 8"	3' 7"	2' 10"
954 AAC	3' 0"	4' 5"	3' 8"
954 ACSR	3' 11"	4' 5"	4' 0"
1590 ACSR	4' 11"	4' 5"	4' 5"

MVDTI*556S

NO.	ITEM ID	QTY	DESCRIPTION
41	DAPVI003	2	VIBRATION DAMPER FOR 556-MCM ACSR

MVDTI*954A

NO.	ITEM ID	QTY	DESCRIPTION
41	DAPVI004	2	VIBRATION DAMPER FOR 954-MCM ACSR

MVDTI*954S

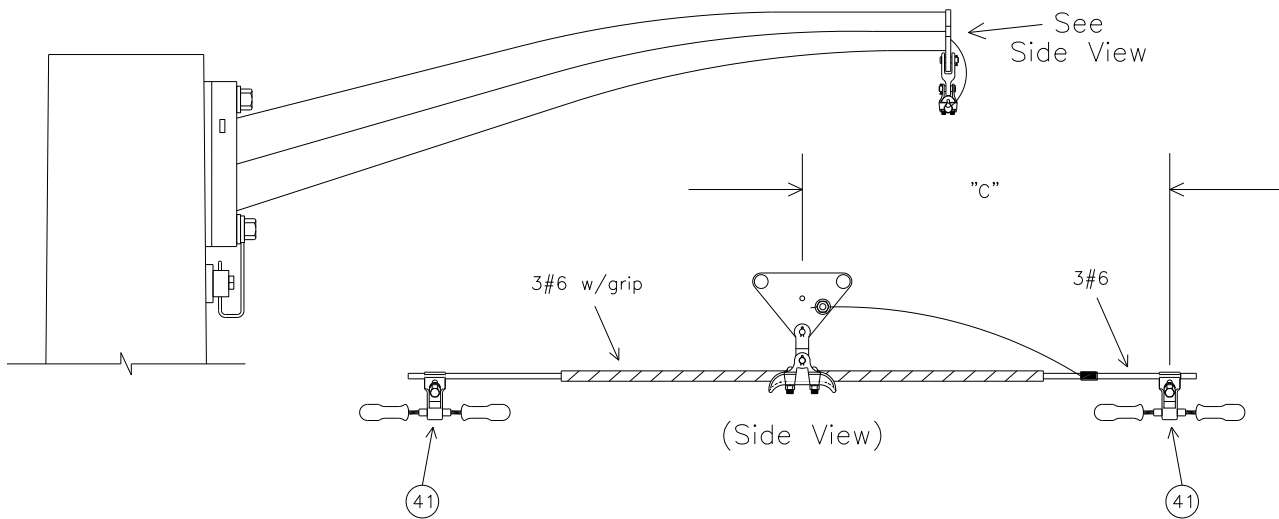
NO.	ITEM ID	QTY	DESCRIPTION
41	DAPVI004	2	VIBRATION DAMPER FOR 954-MCM ACSR

MVDTI*1590

NO.	ITEM ID	QTY	DESCRIPTION
41	DAPVI005	2	VIBRATION DAMPER FOR 1590-MCM ACSR

MVDTS

VIBRATION DAMPER (DOUBLE) FOR TANGENT SHIELD



DAMPER LOCATION	
CONDUCTOR SIZE	"C"
3#6	1' 7"

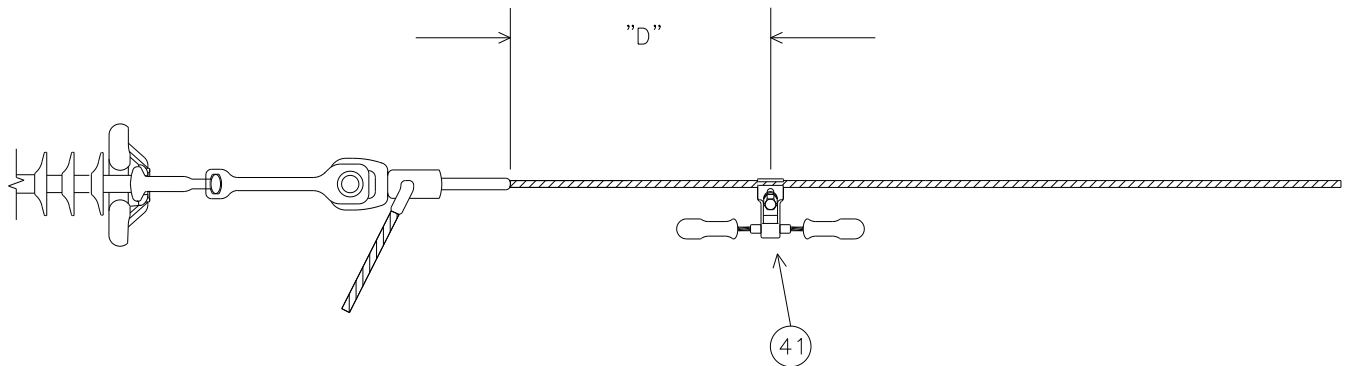
MVDTS

NO.	ITEM ID	QTY	DESCRIPTION
1	DAPVI 001	2	VIBRATION DAMPER FOR 3#6AW & 7#10AW

MVSDI

VIBRATION DAMPER (SINGLE) FOR DEAD-END INSULATORS

CONDUCTOR OPTIONS: 556ACSR, 954AAC, 954 ACSR, 1590 ACSR



DAMPER LOCATION	
CONDUCTOR SIZE	"D"
556 ACSR	2' 8"
954 AAC	3' 0"
954 ACSR	3' 11"
1590 ACSR	4' 11"

MVSDI*556S

NO.	ITEM ID	QTY	DESCRIPTION
41	DAPVI 003	1	VIBRATION DAMPER FOR 556-MCM ACSR

MVSDI*954A

NO.	ITEM ID	QTY	DESCRIPTION
41	DAPVI 004	1	VIBRATION DAMPER FOR 954-MCM ACSR

MVSDI*954S

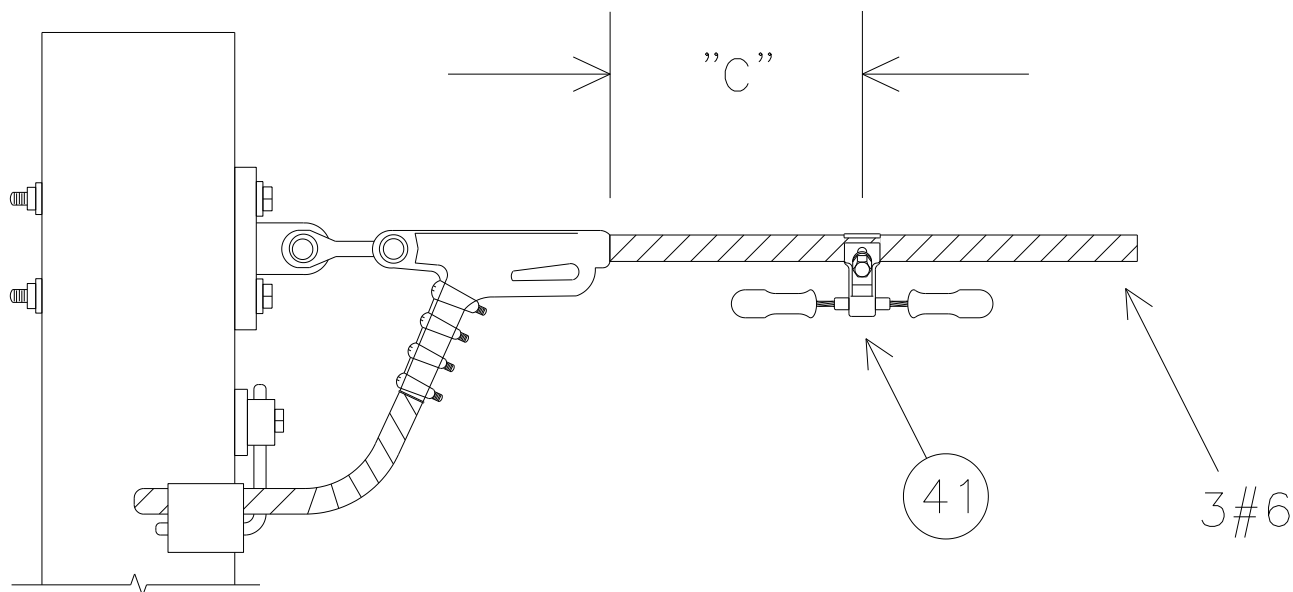
NO.	ITEM ID	QTY	DESCRIPTION
41	DAPVI 004	1	VIBRATION DAMPER FOR 954-MCM ACSR

MVSDI*1590

NO.	ITEM ID	QTY	DESCRIPTION
41	DAPVI 005	1	VIBRATION DAMPER FOR 1590-MCM ACSR

MVSDS

VIBRATION DAMPER (SINGLE) FOR DEAD-END SHIELD



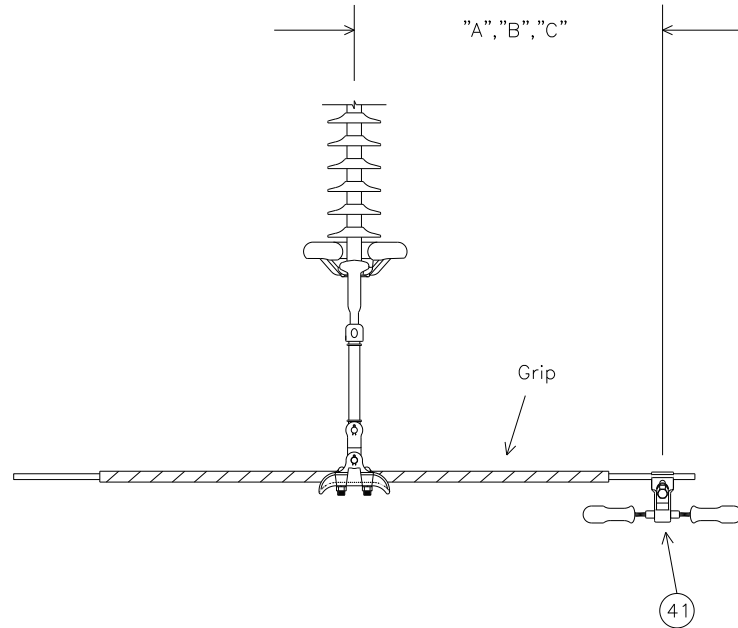
DAMPER LOCATION	
CONDUCTOR SIZE	"C"
3#6	1' 5"

NO.	ITEM ID	QTY	DESCRIPTION
41	DAPVI002	1	VIBRATION DAMPER FOR 3#6AW WITH GRIP

MVSTI

VIBRATION DAMPER (SINGLE) FOR TANGENT INSULATORS

CONDUCTOR OPTIONS: 556ACSR, 954AAC, 954 ACSR, 1590 ACSR



DAMPER LOCATION			
CONDUCTOR SIZE	"A" WITHOUT ARMOR RODS OR AGS UNIT	"B" WITH ARMOR RODS	"C" WITH AGS UNIT
556 ACSR	2' 8"	3' 7"	2' 10"
954 AAC	3' 0"	4' 5"	3' 8"
954 ACSR	3' 11"	4' 5"	4' 0"
1590 ACSR	4' 11"	4' 5"	4' 5"

MVSTI*556S

NO.	ITEM ID	QTY	DESCRIPTION
41	DAPVI 003	1	VIBRATION DAMPER FOR 556 MCM ACSR

MVSTI*954A

NO.	ITEM ID	QTY	DESCRIPTION
41	DAPVI 004	1	VIBRATION DAMPER FOR 954-MCM ACSR

MVSTI*954S

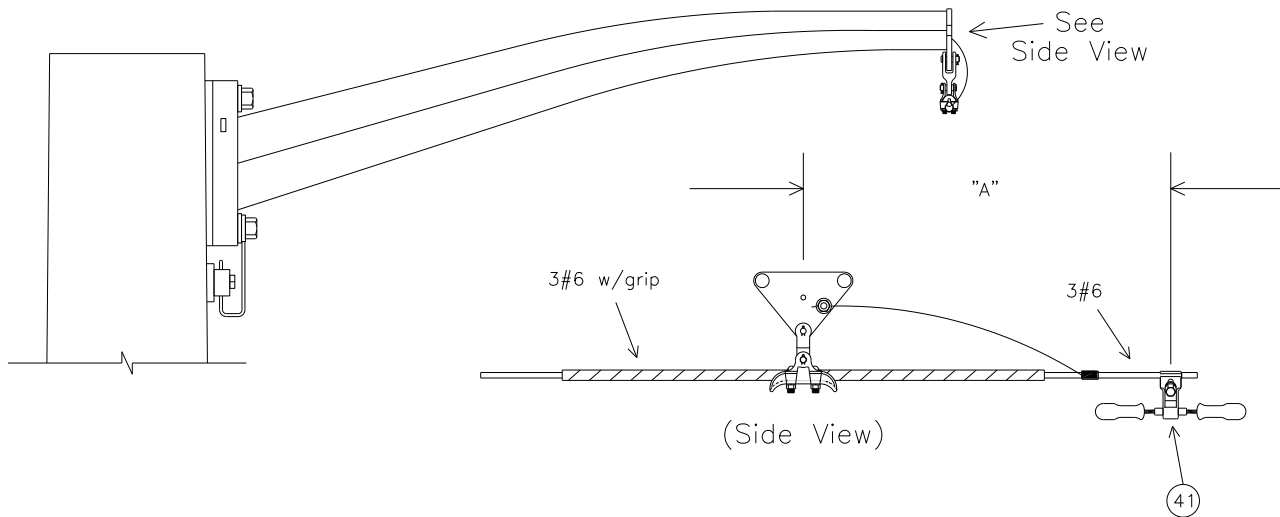
NO.	ITEM ID	QTY	DESCRIPTION
41	DAPVI 004	1	VIBRATION DAMPER FOR 954-MCM ACSR

MVSTI*1590

NO.	ITEM ID	QTY	DESCRIPTION
41	DAPVI 005	1	VIBRATION DAMPER FOR 1590-MCM ACSR

MVSTS

VIBRATION DAMPER (SINGLE) FOR TANGENT SHIELD



DAMPER LOCATION	
CONDUCTOR SIZE	"A"
3#6	1' 7"

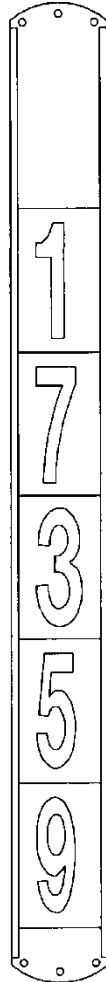
MVSTS

NO.	ITEM ID	QTY	DESCRIPTION
41	DAPVI001	1	VIBRATION DAMPER FOR 3#6AW & 7#10AW

VN

VNC

POLE ADDRESS



VN

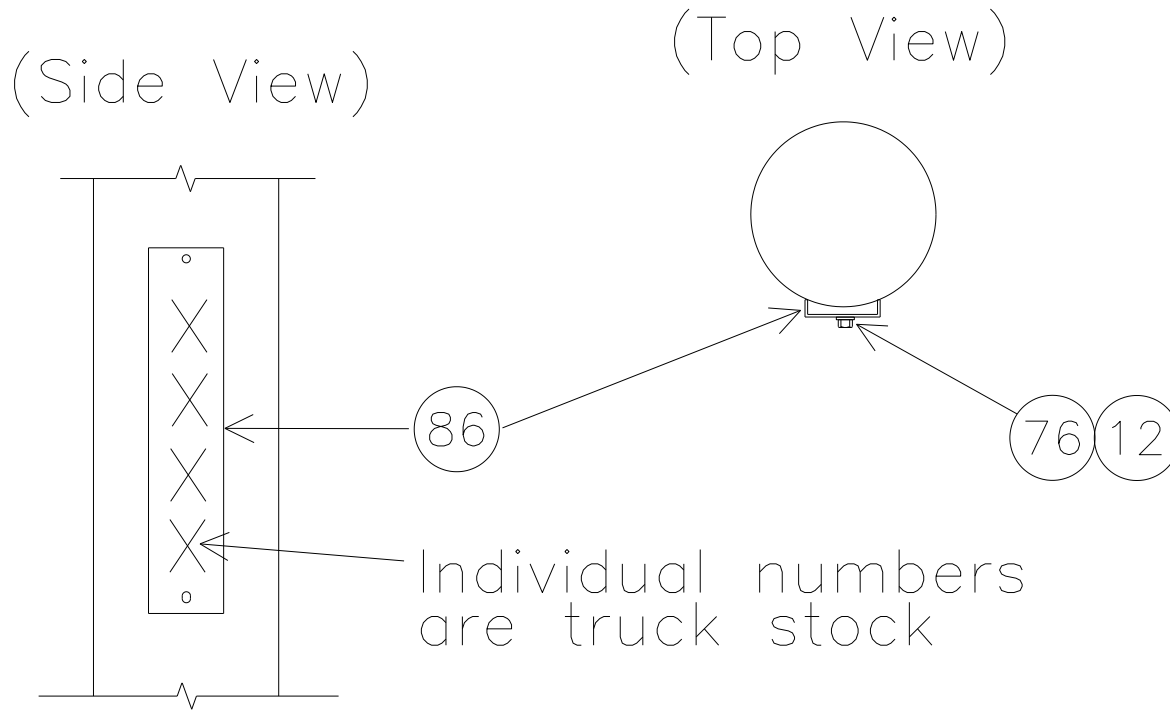
NO	ITEM ID	QTY	DESCRIPTION
1	TAG HO 001	1	TAG HOLDER, 6 CHARACTER, VERTICAL, FOR 2 IN. TAGS
2	TAG NA 002	2	ALUMINUM NAILS SUPPLIED BY TRUCK STOCK
3	TAG YX ***	*	TAGS SUPPLIED BY TRUCK STOCK

VNC

1	ADC MI 001	1	ADHESIVE FOR POLE TAG HOLDER
2	TAG HO 001	1	TAG HOLDER, 6 CHARACTER, VERTICAL, FOR 2 IN. TAGS
3	TAG YX ***	*	TAGS SUPPLIED BY TRUCK STOCK

VNCS

VERTICAL NUMBERING FOR SPUN CONCRETE POLES



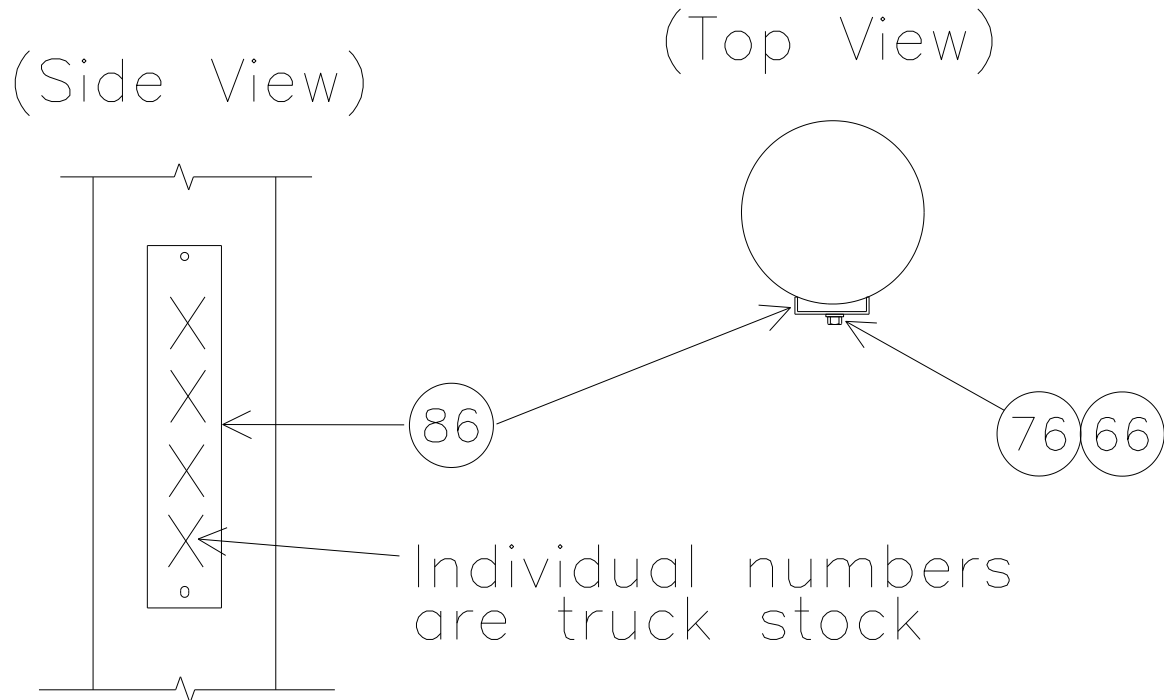
NOTE: INSTALL BELOW C PHASE IN STEP BOLT INSERTS. MOUNT ON NORTH OR EAST SIDE ONLY

VNC1

NO.	ITEM ID	QTY	DESCRIPTION
12	BOLMS 016	2	MACHINE BOLT, 5/8" X 3", SQUARE HEAD, GALVANIZED, WITH SQUARE NUT ATTACHED
76	WASRD 004	2	ROUND WASHER FOR 5/8" BOLT, 1 3/4" DIAMETER, GALVANIZED
86	TAGHO 009	1	TAG HOLDER, FIBERGLASS 39.5" L X 6" W
X	TAGRT 001	0	TAG NUMBER "1", YELLOW WITH BLACK BACKGROUND, 7" L X 5" W, BAG OF 25
X	TAGRT 002	0	TAG NUMBER "2", YELLOW WITH BLACK BACKGROUND, 7" L X 5" W, BAG OF 25
X	TAGRT 003	0	TAG NUMBER "3", YELLOW WITH BLACK BACKGROUND, 7" L X 5" W, BAG OF 25
X	TAGRT 004	0	TAG NUMBER "4", YELLOW WITH BLACK BACKGROUND, 7" L X 5" W, BAG OF 25
X	TAGRT 005	0	TAG NUMBER "5", YELLOW WITH BLACK BACKGROUND, 7" L X 5" W, BAG OF 25
X	TAGRT 006	0	TAG NUMBER "6", YELLOW WITH BLACK BACKGROUND, 7" L X 5" W, BAG OF 25
X	TAGRT 007	0	TAG NUMBER "7", YELLOW WITH BLACK BACKGROUND, 7" L X 5" W, BAG OF 25
X	TAGRT 008	0	TAG NUMBER "8", YELLOW WITH BLACK BACKGROUND, 7" L X 5" W, BAG OF 25
X	TAGRT 009	0	TAG LETTER "T", YELLOW WITH BLACK BACKGROUND, 7" L X 5" W, BAG OF 25
X	TAGRT 010	0	TAG NUMBER "0", YELLOW WITH BLACK BACKGROUND, 7" L X 5" W, BAG OF 25

VNCW

VERTICAL NUMBERING FOR WOOD POLES



NOTE: INSTALL BELOW C PHASE. MOUNT ON NORTH OR EAST SIDE ONLY

VNC1

NO.	ITEM ID	QTY	DESCRIPTION
66	SCWLA 002	2	SCREW, LAG, 1/2" X 4", GALVANIZED,
76	WASRD 003	2	ROUND WASHER FOR 1/2" BOLT, 1 3/8" DIAMETER, GALVANIZED
86	TAGHO 008	1	TAG HOLDER, FIBERGLASS 33" L X 6" W
X	TAGRT 001	0	TAG NUMBER "1", YELLOW WITH BLACK BACKGROUND, 7" L X 5" W, BAG OF 25
X	TAGRT 002	0	TAG NUMBER "2", YELLOW WITH BLACK BACKGROUND, 7" L X 5" W, BAG OF 25
X	TAGRT 003	0	TAG NUMBER "3", YELLOW WITH BLACK BACKGROUND, 7" L X 5" W, BAG OF 25
X	TAGRT 004	0	TAG NUMBER "4", YELLOW WITH BLACK BACKGROUND, 7" L X 5" W, BAG OF 25
X	TAGRT 005	0	TAG NUMBER "5", YELLOW WITH BLACK BACKGROUND, 7" L X 5" W, BAG OF 25
X	TAGRT 006	0	TAG NUMBER "6", YELLOW WITH BLACK BACKGROUND, 7" L X 5" W, BAG OF 25
X	TAGRT 007	0	TAG NUMBER "7", YELLOW WITH BLACK BACKGROUND, 7" L X 5" W, BAG OF 25
X	TAGRT 008	0	TAG NUMBER "8", YELLOW WITH BLACK BACKGROUND, 7" L X 5" W, BAG OF 25
X	TAGRT 009	0	TAG LETTER "T", YELLOW WITH BLACK BACKGROUND, 7" L X 5" W, BAG OF 25
X	TAGRT 010	0	TAG NUMBER "0", YELLOW WITH BLACK BACKGROUND, 7" L X 5" W, BAG OF 25

THIS PAGE IS INTENTIONALLY LEFT BLANK