

# SYSTEM PROTECTION - PLATING

## INTRODUCTION

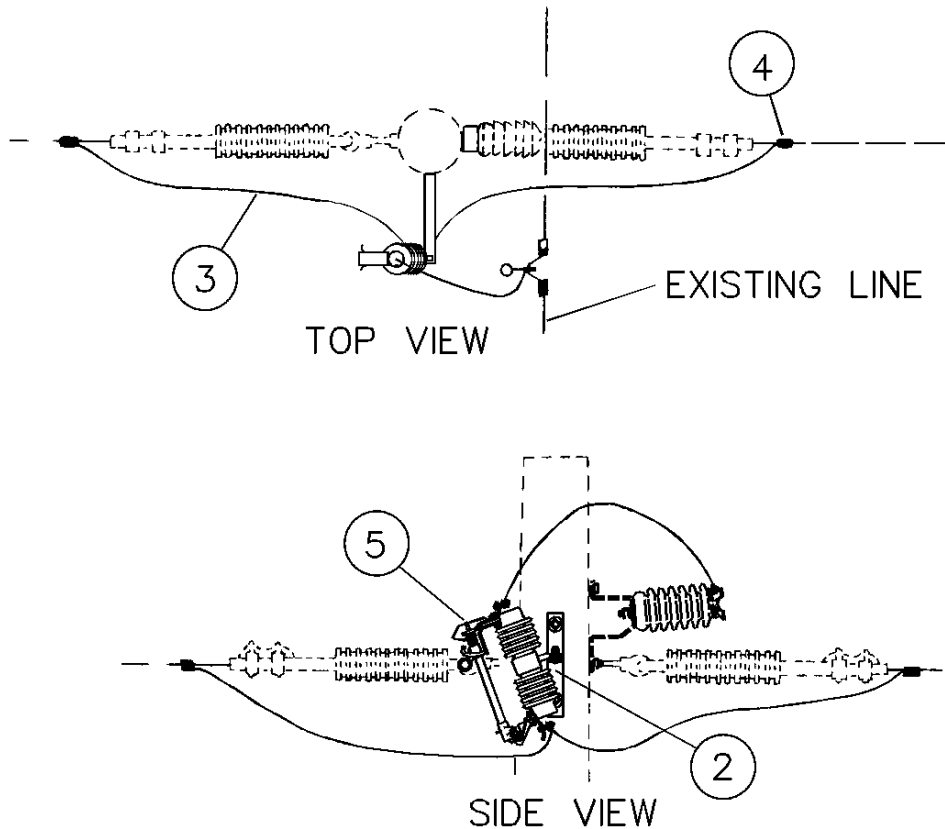
1. Plates F1 thru F10 supply only the material required for one-phase. Therefore, for three-phase construction, you will be required to call for the specified plate three times at that station.
2. Plate options are listed on each construction standard page.
3. Single-phase sectionalizers consist of an electronic barrel assembly that replaces the standard fuse barrel that is supplied with the fuse cutout. Two options for this unit are available -- 2S and 3S. The first is for a two-shot sectionalizer and the other is for a three-shot sectionalizer. These options are available for plates F1 thru F10. Application of sectionalizers shall only be initiated by the System Analysis section of Technical Support Engineering.
4. Recloser Options:
  - I.4.1. FCRDA (NOVA)  
The plate name is followed by the type of recloser and the corresponding conductor size.  
AVAILABLE RECLOSERS:      TIE      For new construction/ Distribution Automation (NOVA)
5. Reclosers and Sectionalizers:
  - I.5.1. Reclosers both single phase and three phase shall only be plated by System Analysis personnel.
  - I.5.2. Include the following note on your construction drawings for each recloser or sectionalizer installation:
6. 150QR fuses (FUSOH052) are only to be installed in 200A barrels (FUSHO150). This fuse and barrel are to be itemized individually. These barrels fit into our 100A cutout (CUTOT004).
7. The plates have been updated with the new animal guarding system. The #4 covered copper (CAI RH 010) is used for all jumpers. The bushing cover (GUA AN 002) is used on the top skirt of the recloser bushings. The cutout guard (GUA AN 006) is installed on the top of each cutout.
8. Add the suffix F for Fiberglass Construction. Examples: F1F, F11F, FCRSVF.
9. All the plates in the section can be plated as Fiberglass Construction or Contaminated Environment simply by adding an F or C suffix.
10. Do not install Sectionalizers on multiphase laterals (See System Analysis).
11. The ANTENNA plate has been added to the following plates: AR-TSE, AR-TSH
12. 200QR fuses (FUSOH012) are only to be installed in 200A cutouts (CUTOT007).

# F1

## WISHBONE MOUNTED FUSE FOR TAP

OPTIONS: 2S, 3S, 10T, 12T, 15T, 20T, 25T, 30T, 40T, 50T, 65T, 80T, 100T, 100TS

BOLT PLATE: NONE



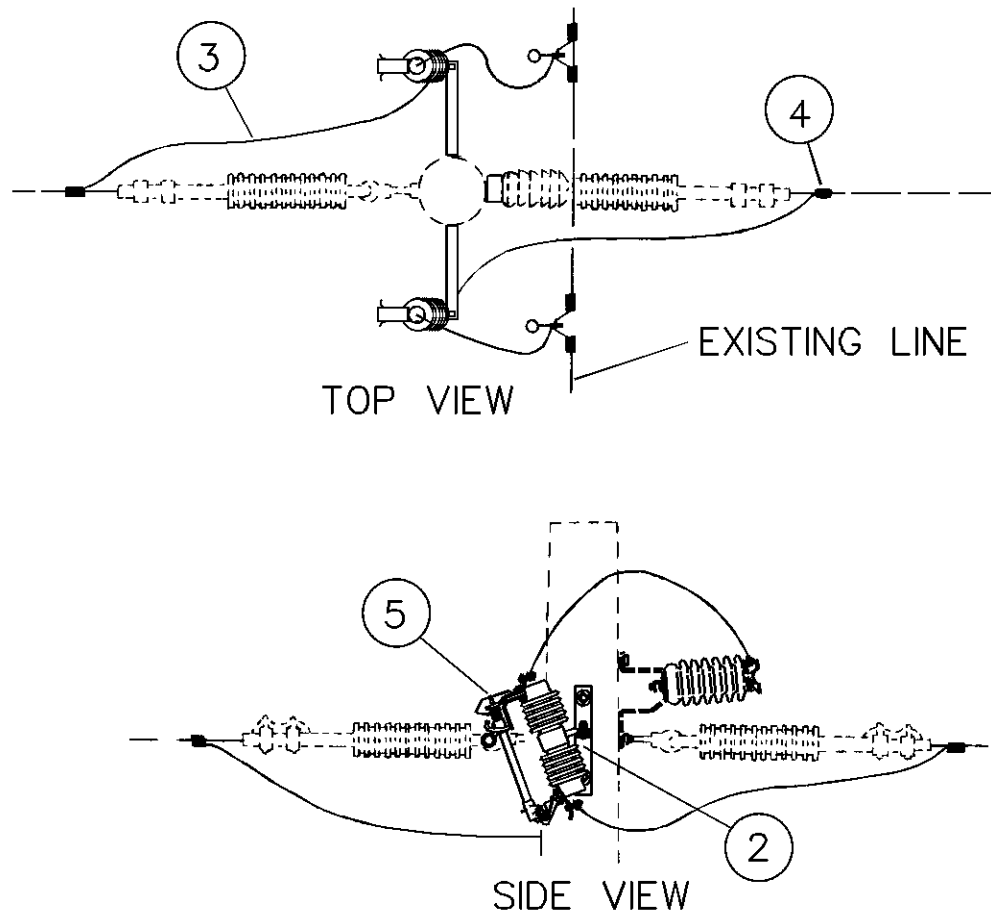
NO.	ITEM ID	QTY	DESCRIPTION
1	BOL MS 036	2	BOLT, MACHINE, SQUARE HEAD, 3/4X14
2	BKT AC 007	1	BRACKET, CUTOUT OR ARRESTER, MODIFIED WISHBONE
3	COB CO 029	12	CONDUCTOR, COPPER, #2 SOLID
4	CNN CP 002	2	CONNECTOR, AL. COMP., SIDE-BY, 6-2 2-1/0
5	CUT OT 004	1	CUTOUT, FUSED, 150KV BIL, 100 AMP, 27KV
6	WAS RD 005	4	WASHER, ROUND, 2 IN. DIA., FOR 3/4 IN. BOLT
7	WAS SP 002	2	WASHER, SPRING, DOUBLE HELIX, FOR 3/4 IN. BOLT
8	WAS SF 004	2	WASHER, SQUARE, FLAT, 3 IN., FOR 3/4 IN. BOLT
9	FUS OH ***	1	GENERAL CODE FOR T-LINK FUSE
	OR		
9	SEC EL 001	1	SECTIONALIZER, ELECTRONIC, 2-SHOT
	OR		
9	SEC EL 004	1	SECTIONALIZER, ELECTRONIC, 3-SHOT

## F2

### WISHBONE MOUNTED FUSE FOR DOUBLE TAP

OPTIONS: 2S, 3S, 10T, 12T, 15T, 20T, 25T, 30T, 40T, 50T, 65T, 80T, 100T

BOLT PLATE: NONE



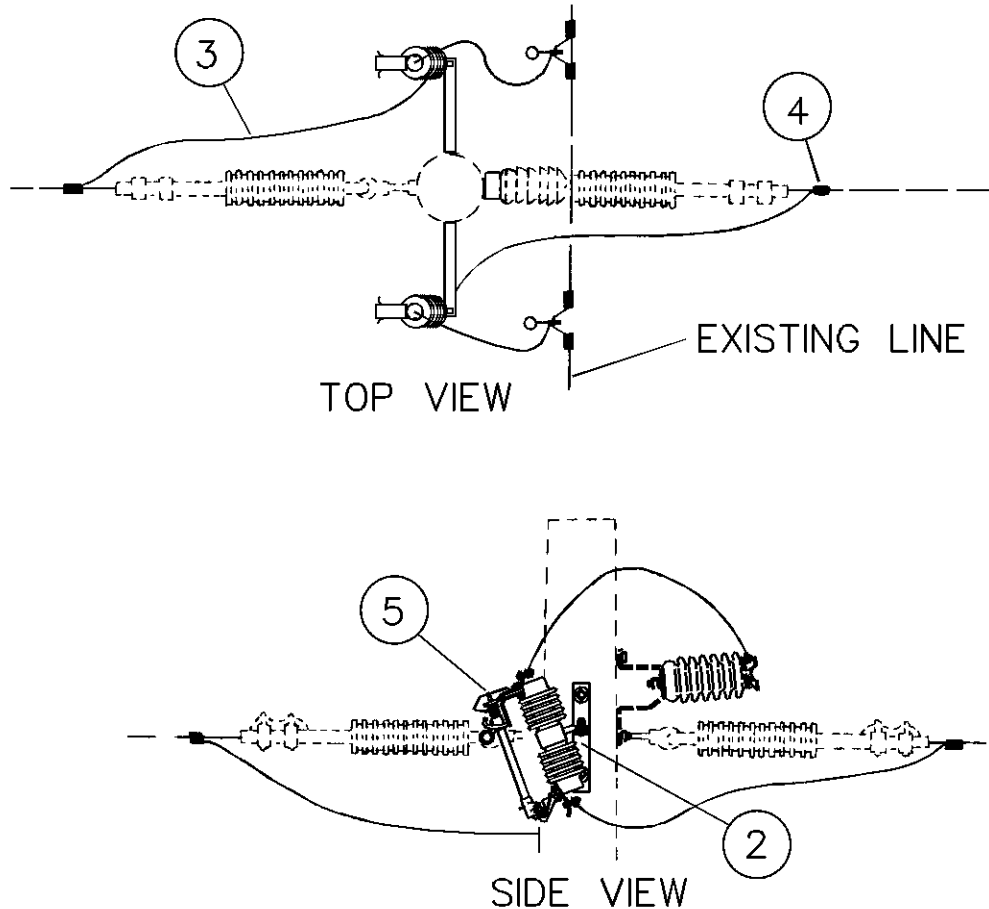
NO.	ITEM ID	QTY	DESCRIPTION
1	BOL DA 015	2	BOLT, DOUBLE ARMING, 3/4X14
2	BKT AC 007	2	BRACKET, CUTOUT OR ARRESTER, MODIFIED WISHBONE
3	COB CO 029	24	CONDUCTOR, COPPER, #2 SOLID
4	CNN CP 002	2	CONNECTOR, AL. COMP., SIDE-BY, 6-2 2-1/0
5	CUT OT 004	2	CUTOUT, FUSED, 150KV BIL, 100 AMP, 27KV
6	WAS RD 005	6	WASHER, ROUND, 2 IN. DIA., FOR 3/4 IN. BOLT
7	WAS SP 002	2	WASHER, SPRING, DOUBLE HELIX, FOR 3/4 IN. BOLT
8	FUS OH ***	2	GENERAL CODE FOR T-LINK FUSE
	OR		
8	SEC EL 001	2	SECTIONALIZER, ELECTRONIC, 2-SHOT
	OR		
8	SEC EL 004	2	SECTIONALIZER, ELECTRONIC, 3-SHOT

# F3

## WISHBONE MOUNTED FUSE FOR CROSS

OPTIONS: 2S, 3S, 10T, 12T, 15T, 20T, 25T, 30T, 40T, 50T, 65T, 80T, 100T

BOLT PLATE: NONE



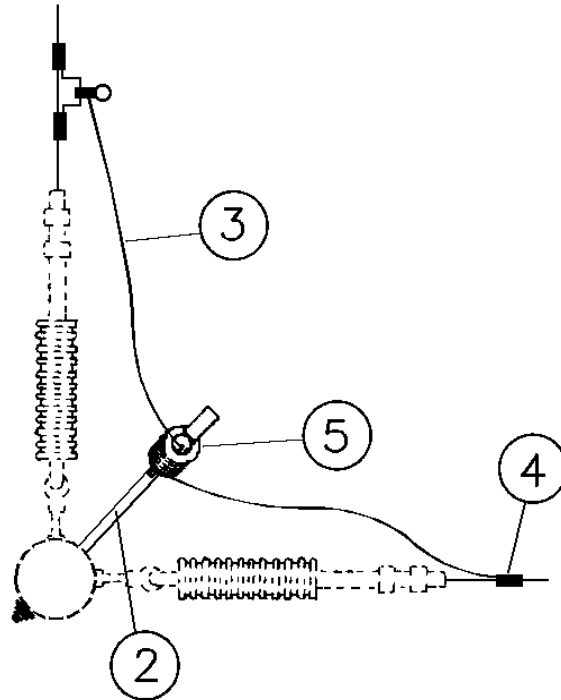
NO.	ITEM ID	QTY	DESCRIPTION
1	BOL MS 036	2	BOLT, MACHINE, SQUARE HEAD, 3/4X14
2	BKT AC 007	1	BRACKET, CUTOFF OR ARRESTER, MODIFIED WISHBONE
3	COB CO 029	12	CONDUCTOR, COPPER, #2 SOLID
4	CNN CP 002	2	CONNECTOR, AL. COMP., SIDE-BY, 6-2 2-1/0
5	CUT OT 004	1	CUTOFF, FUSED, 150KV BIL, 100 AMP, 27KV
6	WAS RD 005	4	WASHER, ROUND, 2 IN. DIA., FOR 3/4 IN. BOLT
7	WAS SP 002	2	WASHER, SPRING, DOUBLE HELIX, FOR 3/4 IN. BOLT
8	FUS OH ***	1	GENERAL CODE FOR T-LINK FUSE
	OR		
8	SEC EL 001	1	SECTIONALIZER, ELECTRONIC, 2-SHOT
	OR		
8	SEC EL 004	1	SECTIONALIZER, ELECTRONIC, 3-SHOT

# F5

## WISHBONE MOUNTED FUSE FOR SECTIONALIZING

OPTIONS: 2S, 3S, 10T, 12T, 15T, 20T, 25T, 30T, 40T, 50T, 65T, 80T, 100T

BOLT PLATE: NONE



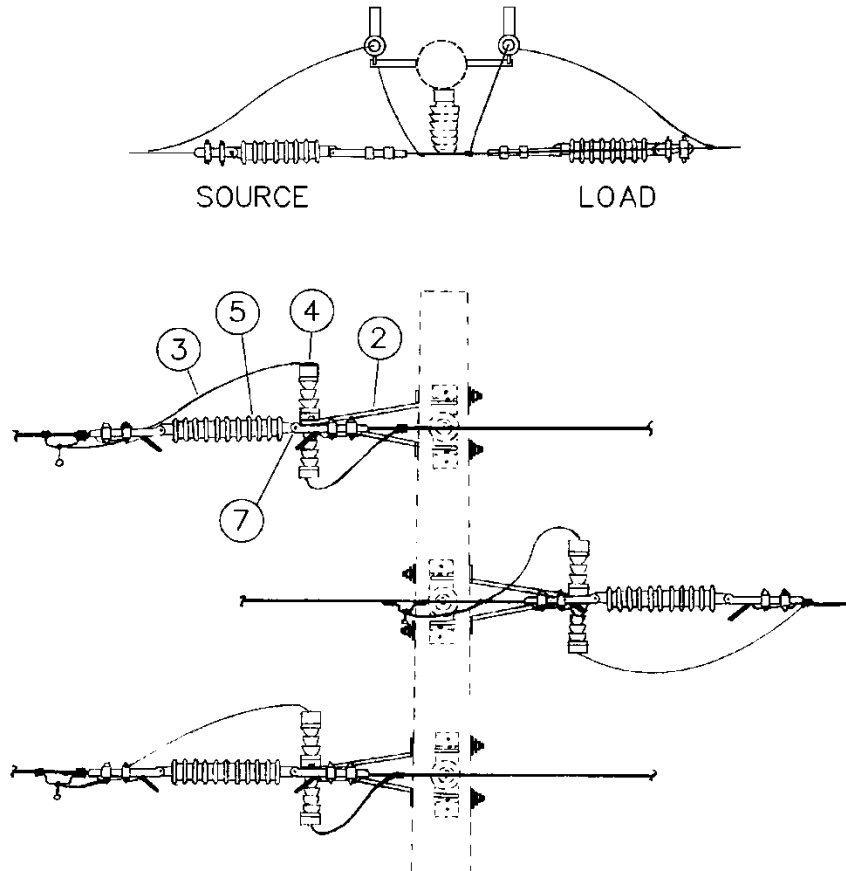
NO.	ITEM ID	QTY	DESCRIPTION
1	BOL MS 036	2	BOLT, MACHINE, SQUARE HEAD, 3/4X14
2	BKT AC 007	1	BRACKET, CUTOUT OR ARRESTER, MODIFIED WISHBONE
3	COB CO 029	12	CONDUCTOR, COPPER, #2 SOLID
4	CNN CP 002	2	CONNECTOR, AL. COMP., SIDE-BY, 6-2 2-1/0
5	CUT OT 004	1	CUTOUT, FUSED, 150KV BIL, 100 AMP, 27KV
6	WAS RD 005	4	WASHER, ROUND, 2 IN. DIA., FOR 3/4 IN. BOLT
7	WAS SP 002	2	WASHER, SPRING, DOUBLE HELIX, FOR 3/4 IN. BOLT
8	WAS SF 004	2	WASHER, SQUARE, FLAT, 3 IN., FOR 3/4 IN. BOLT
9	FUS OH ***	1	GENERAL CODE FOR T-LINK FUSE
	OR		
9	SEC EL 001	1	SECTIONALIZER, ELECTRONIC, 2-SHOT
	OR		
9	SEC EL 002	1	SECTIONALIZER, ELECTRONIC, 3-SHOT

# F5-1

## WISHBONE MOUNTED FUSE FOR SECTIONALIZING

OPTIONS: 2S, 3S, 10T, 12T, 15T, 20T, 25T, 30T, 40T, 50T, 65T, 80T, 100T

BOLT PLATE: NONE



NOTE: STRAIGHT STRAIN CLAMPS MUST BE ITEMIZED ACCORDING TO CONDUCTOR SIZE

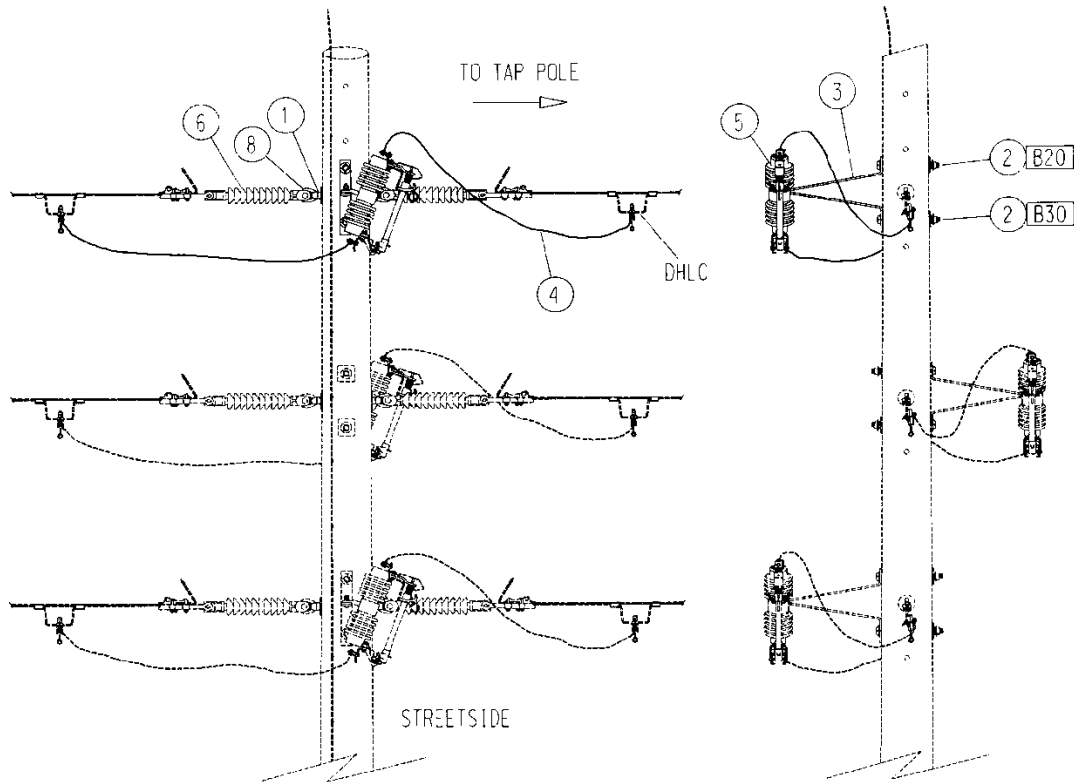
NO.	ITEM ID	QTY	DESCRIPTION
1	BOL MS 036	2	BOLT, MACHINE, SQUARE HEAD, 3/4X14
2	BKT AC 007	1	BRACKET, CUTOUT OR ARRESTER, MODIFIED WISHBONE
3	COB CO 029	12	CONDUCTOR, COPPER, #2 SOLID
4	CUT OT 004	1	CUTOUT, FUSED, 150KV BIL, 100 AMP, 27KV
5	INS CO 001	1	INSULATOR, DEADEND, POLYMER
6	LIK EX 001	1	EXTENSION LINK, 6 IN.
7	WAS RD 005	4	WASHER, ROUND, 2 IN. DIA., FOR 3/4 IN. BOLT
8	WAS SP 002	2	WASHER, SPRING, DOUBLE HELIX, FOR 3/4 IN. BOLT
9	WAS SF 004	2	WASHER, SQUARE, FLAT, 3 IN., FOR 3/4 IN. BOLT
10	FUS OH ***	1	GENERAL CODE FOR T-LINK FUSE
	OR		
10	SEC EL 001	1	SECTIONALIZER, ELECTRONIC, 2-SHOT
	OR		
10	SEC EL 002	1	SECTIONALIZER, ELECTRONIC, 3-SHOT

## F5-2

### WISHBONE MOUNTED FUSE FOR SECTIONALIZING

OPTIONS: 2S, 3S, 10T, 12T, 15T, 20T, 25T, 30T, 40T, 50T, 65T, 80T, 100T

BOLT PLATE: NONE



**NOTE:** STRAIGHT STRAIN CLAMPS MUST BE ITEMIZED ACCORDING TO CONDUCTOR SIZE

**NOTE:** DRAWING IS FOR REFERENCE, PLATING IS DONE ONE PHASE AT A TIME

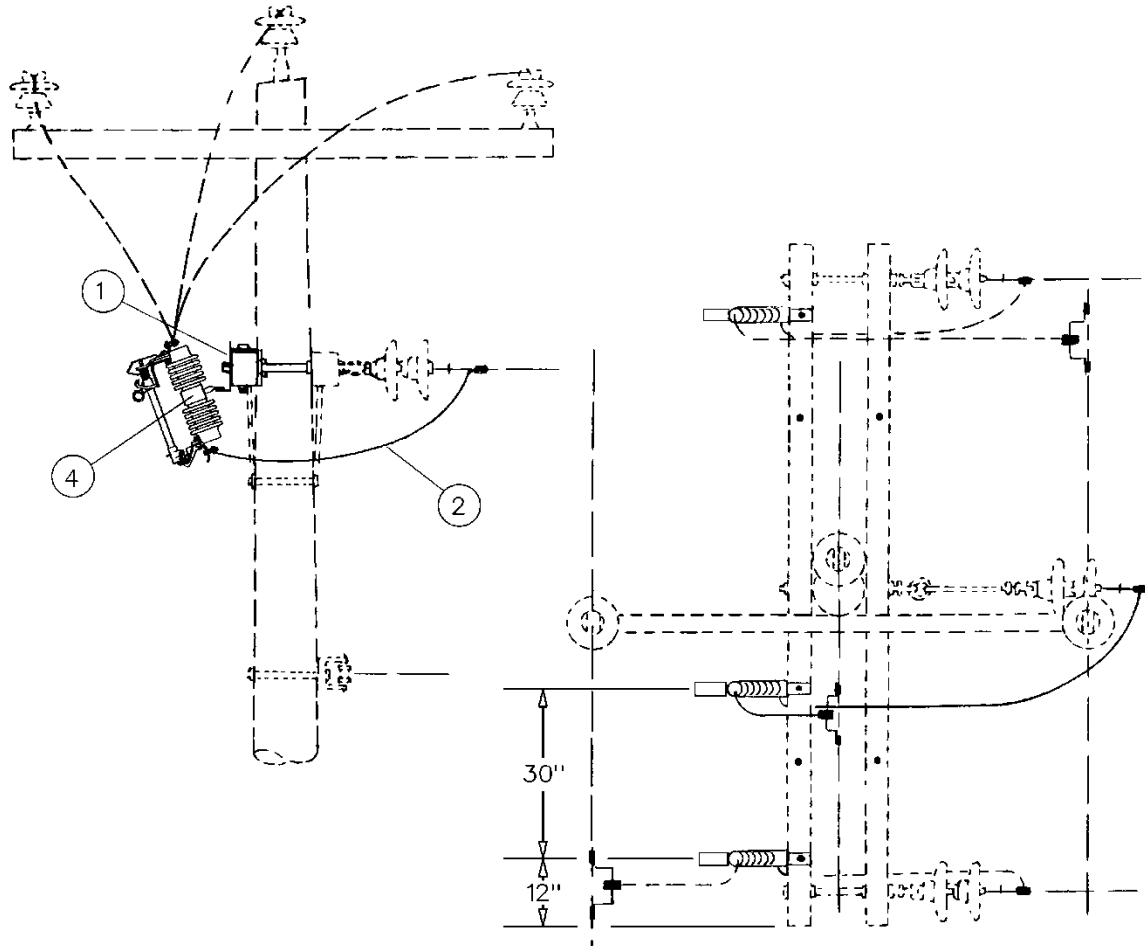
NO.	ITEM ID	QTY	DESCRIPTION
1	BOL DA 015	1	BOLT, DOUBLE ARMING, 3/4X14
2	BOL MS 036	2	BOLT, MACHINE, SQUARE HEAD, 3/4X14
3	BKT AC 007	1	BRACKET, CUTOFF OR ARRESTER, MODIFIED WISHBONE
4	COB CO 029	12	CONDUCTOR, COPPER, #2 SOLID
5	CUT OT 004	1	CUTOFF, FUSED, 150KV BIL, 100 AMP, 27KV
6	INS CO 001	2	INSULATOR, DEADEND, POLYMER
7	NUT EY 003	2	NUT, EYE, 3/4
8	WAS RD 005	5	WASHER, ROUND, 2 IN. DIA., FOR 3/4 IN. BOLT
9	WAS SP 002	3	WASHER, SPRING, DOUBLE HELIX, FOR 3/4 IN. BOLT
10	WAS SF 004	4	WASHER, SQUARE, FLAT, 3 IN., FOR 3/4 IN. BOLT
11	FUS OH ***	1	GENERAL CODE FOR T-LINK FUSE
	OR		
11	SEC EL 001	1	SECTIONALIZER, ELECTRONIC, 2-SHOT
	OR		
11	SEC EL 002	1	SECTIONALIZER, ELECTRONIC, 3-SHOT

# F6

## CROSSARM MOUNTED FUSE FOR TAP

OPTIONS: 2S, 3S, 10T, 12T, 15T, 20T, 25T, 30T, 40T, 50T, 65T, 80T, 100T

BOLT PLATE: NONE



NO.	ITEM ID	QTY	DESCRIPTION
1	BKT AC 003	1	BRACKET, CUTOUT OR ARRESTER, CROSSARM
2	COB CO 029	24	CONDUCTOR, COPPER, #2 SOLID
3	CNN CP 002	1	CONNECTOR, AL. COMP., SIDE-BY, 6-2 2-1/0
4	CUT OT 004	1	CUTOUT, FUSED, 150KV BIL, 100 AMP, 27KV
5	FUS OH ***	1	GENERAL CODE FOR T-LINK FUSE
	OR		
5	SEC EL 001	1	SECTIONALIZER, ELECTRONIC, 2-SHOT
	OR		
5	SEC EL 002	1	SECTIONALIZER, ELECTRONIC, 3-SHOT

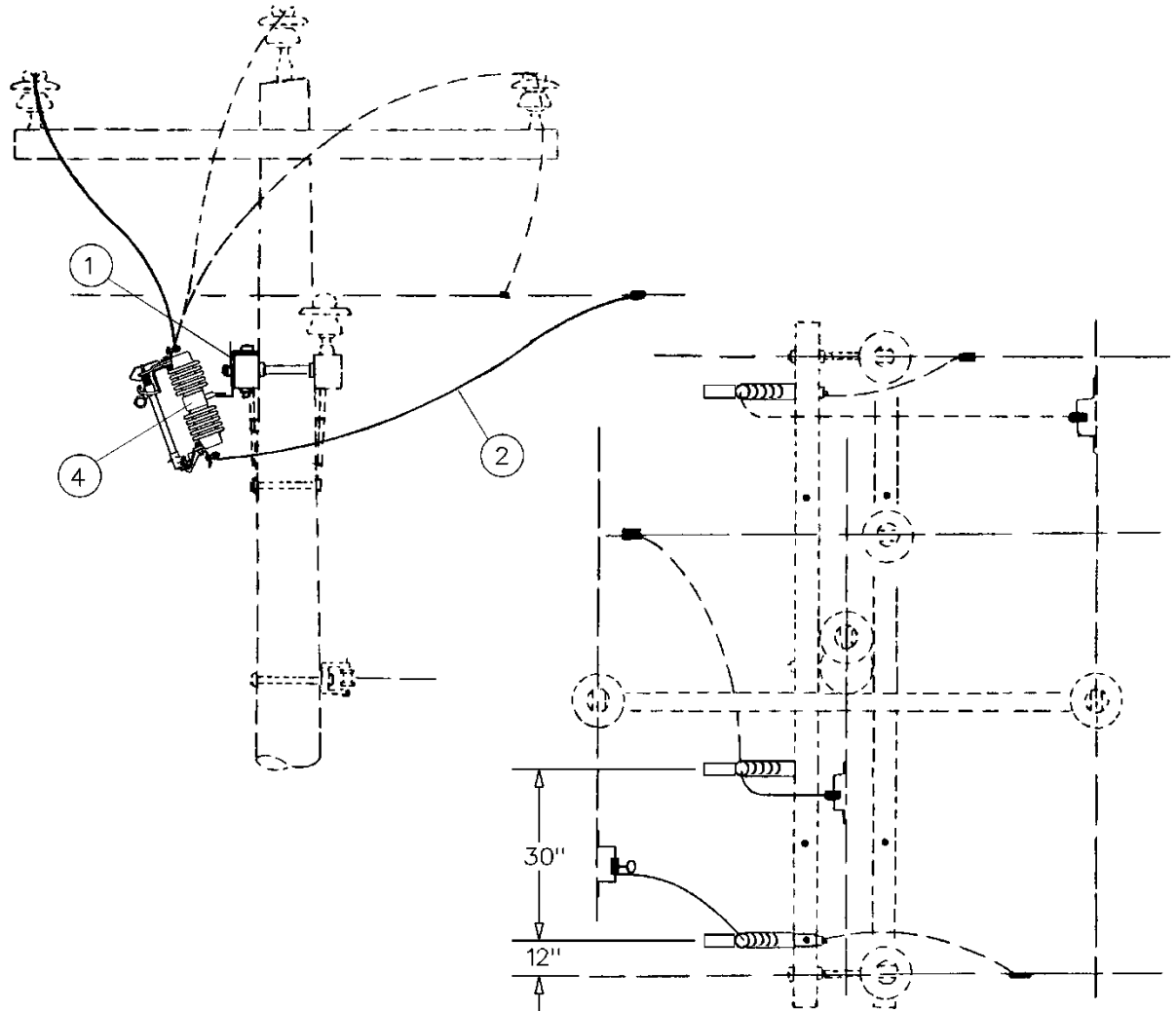


# F7

## CROSSARM MOUNTED FUSE FOR CROSS

OPTIONS: 2S, 3S, 10T, 12T, 15T, 20T, 25T, 30T, 40T, 50T, 65T, 80T, 100T

BOLT PLATE: NONE



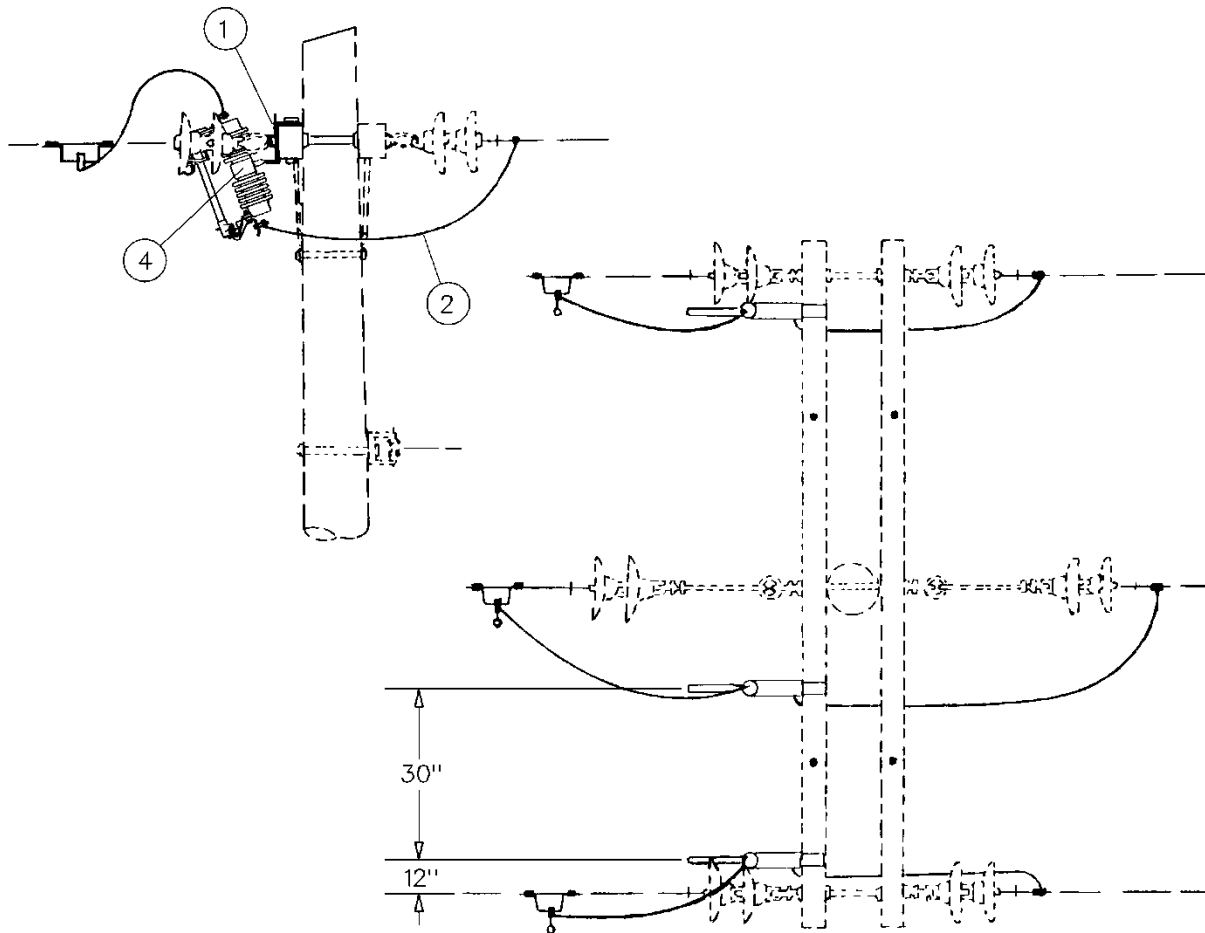
NO.	ITEM ID	QTY	DESCRIPTION
1	BKT AC 003	1	BRACKET, CUTOUT OR ARRESTER, CROSSARM
2	COB CO 029	24	CONDUCTOR, COPPER, #2 SOLID
3	CNN CP 002	1	CONNECTOR, AL. COMP., SIDE-BY, 6-2 2-1/0
4	CUT OT 004	1	CUTOUT, FUSED, 150KV BIL, 100 AMP, 27KV
5	FUS OH ***	1	GENERAL CODE FOR T-LINK FUSE
	OR		
5	SEC EL 001	1	SECTIONALIZER, ELECTRONIC, 2-SHOT
	OR		
5	SEC EL 002	1	SECTIONALIZER, ELECTRONIC, 3-SHOT

# F8

## CROSSARM MOUNTED FUSE FOR SECTIONALIZING

OPTIONS: 2S, 3S, 10T, 12T, 15T, 20T, 25T, 30T, 40T, 50T, 65T, 80T, 100T

BOLT PLATE: NONE



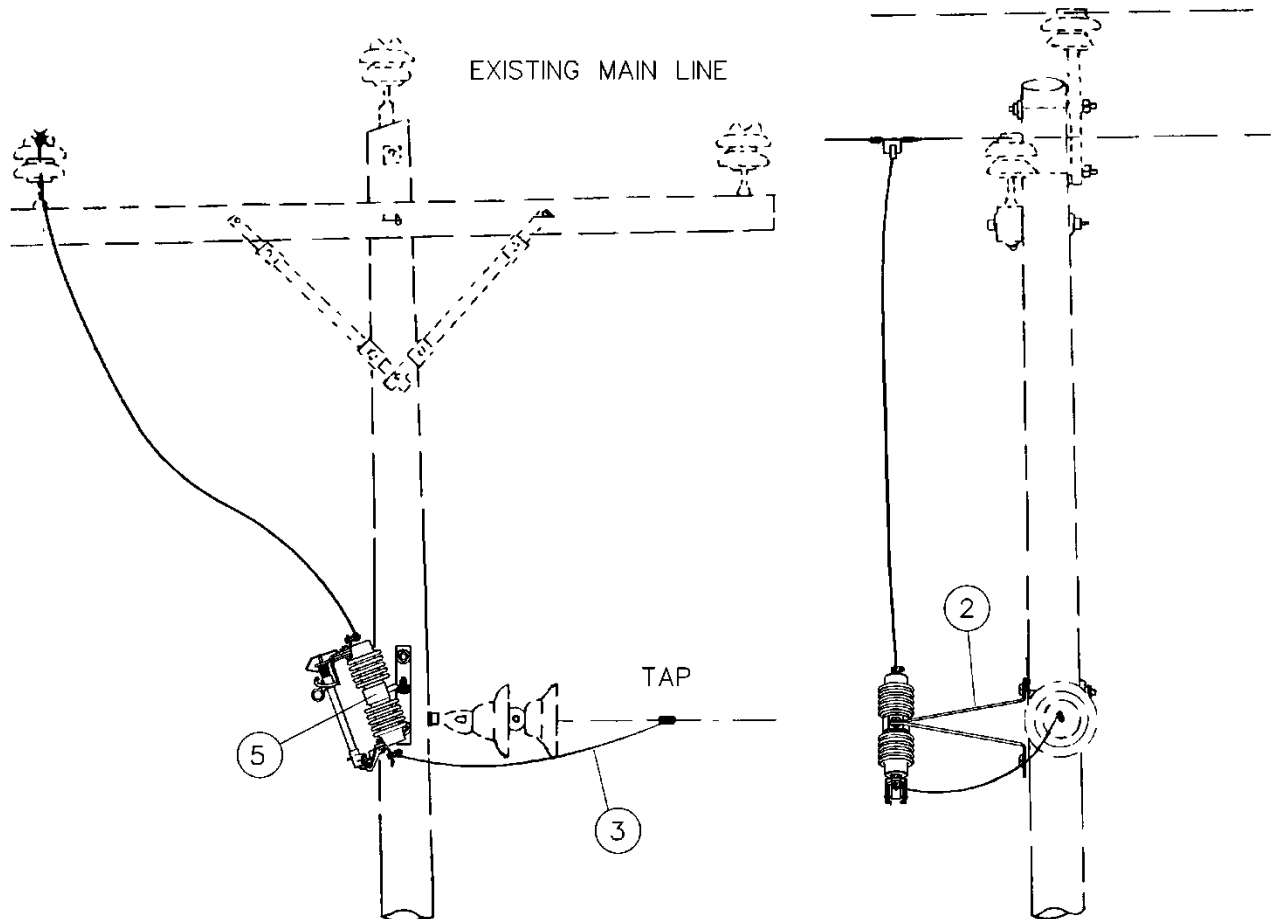
NO.	ITEM ID	QTY	DESCRIPTION
1	BKT AC 003	1	BRACKET, CUTOUT OR ARRESTER, CROSSARM
2	COB CO 029	24	CONDUCTOR, COPPER, #2 SOLID
3	CNN CP 002	1	CONNECTOR, AL. COMP., SIDE-BY, 6-2 2-1/0
4	CUT OT 004	1	CUTOUT, FUSED, 150KV BIL, 100 AMP, 27KV
5	FUS OH ***	1	GENERAL CODE FOR T-LINK FUSE
	OR		
5	SEC EL 001	1	SECTIONALIZER, ELECTRONIC, 2-SHOT
	OR		
5	SEC EL 002	1	SECTIONALIZER, ELECTRONIC, 3-SHOT

# F9

## SINGLE PHASE TAP FUSE FROM CROSSARM OR POLETOP PIN

OPTIONS: 2S, 3S, 10T, 12T, 15T, 20T, 25T, 30T, 40T, 50T, 65T, 80T, 100T

BOLT PLATE: NONE



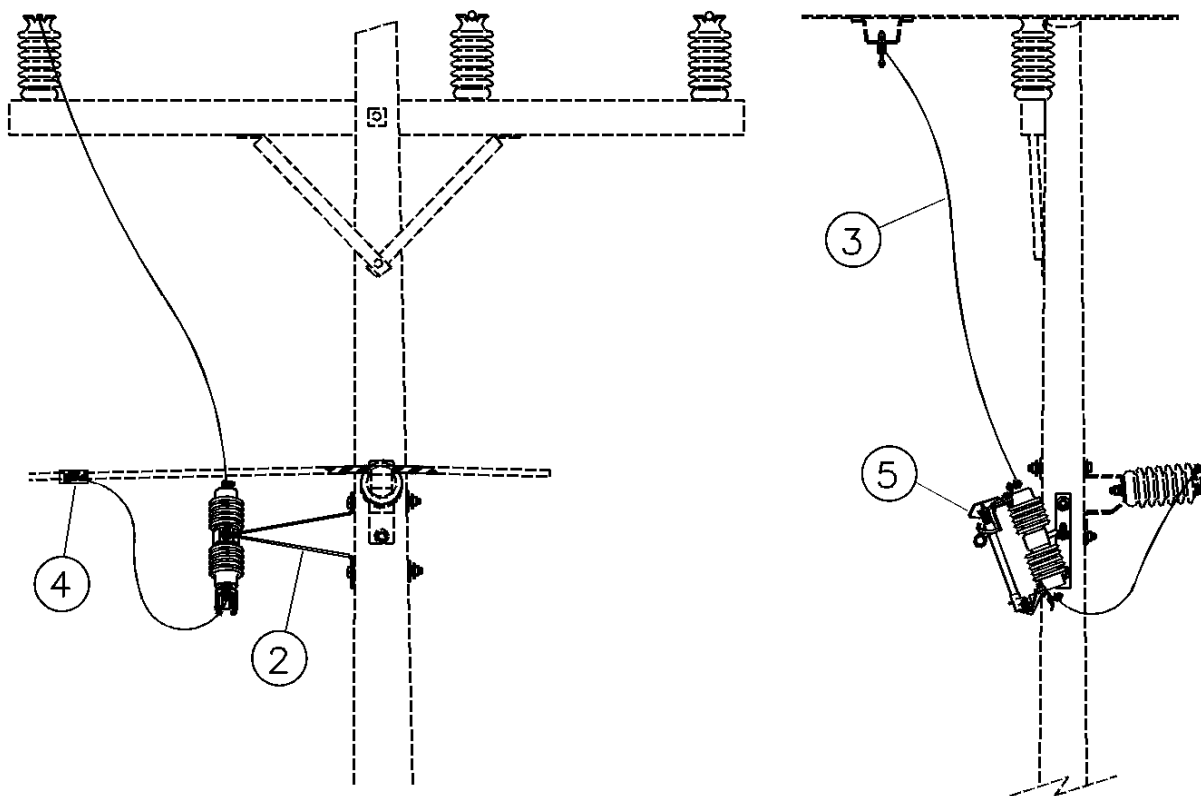
NO.	ITEM ID	QTY	DESCRIPTION
1	BOL MS 036	2	BOLT, MACHINE, SQUARE HEAD, 3/4X14
2	BKT AC 007	1	BRACKET, CUTOFF OR ARRESTER, MODIFIED WISHBONE
3	COB CO 029	12	CONDUCTOR, COPPER, #2 SOLID
4	CNN CP 002	2	CONNECTOR, AL. COMP., SIDE-BY, 6-2 2-1/0
5	CUT OT 004	1	CUTOFF, FUSED, 150KV BIL, 100 AMP, 27KV
6	WAS RD 005	4	WASHER, ROUND, 2 IN. DIA., FOR 3/4 IN. BOLT
7	WAS SP 002	2	WASHER, SPRING, DOUBLE HELIX, FOR 3/4 IN. BOLT
8	WAS SF 004	2	WASHER, SQUARE, FLAT, 3 IN., FOR 3/4 IN. BOLT
9	FUS OH ***	1	GENERAL CODE FOR T-LINK FUSE
	OR		
9	SEC EL 001	1	SECTIONALIZER, ELECTRONIC, 2-SHOT
	OR		
9	SEC EL 002	1	SECTIONALIZER, ELECTRONIC, 3-SHOT

## F10

### SINGLE PHASE CROSS FUSE FROM CROSSARM OR POLETOP PIN

OPTIONS: 2S, 3S, 10T, 12T, 15T, 20T, 25T, 30T, 40T, 50T, 65T, 80T, 100T

BOLT PLATE: NONE



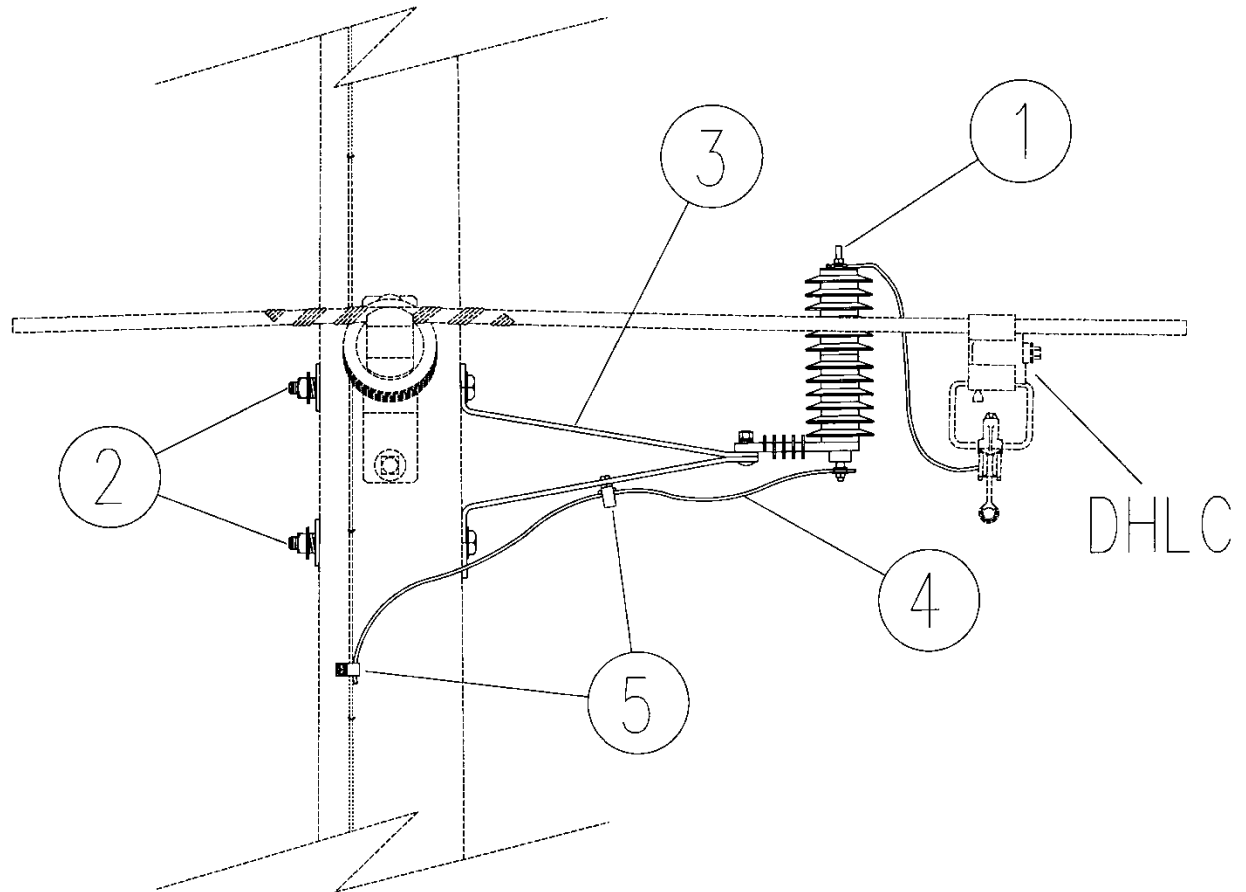
NO.	ITEM ID	QTY	DESCRIPTION
1	BOL MS 036	2	BOLT, MACHINE, SQUARE HEAD, 3/4X14
2	BKT AC 007	1	BRACKET, CUTOFF OR ARRESTER, MODIFIED WISHBONE
3	COB CO 029	12	CONDUCTOR, COPPER, #2 SOLID
4	CNN CP 002	2	CONNECTOR, AL. COMP., SIDE-BY, 6-2 2-1/0
5	CUT OT 004	1	CUTOFF, FUSED, 150KV BIL, 100 AMP, 27KV
6	WAS RD 005	4	WASHER, ROUND, 2 IN. DIA., FOR 3/4 IN. BOLT
7	WAS SP 002	2	WASHER, SPRING, DOUBLE HELIX, FOR 3/4 IN. BOLT
8	WAS SF 004	2	WASHER, SQUARE, FLAT, 3 IN., FOR 3/4 IN. BOLT
9	FUS OH ***	1	GENERAL CODE FOR T-LINK FUSE
	OR		
9	SEC EL 001	1	SECTIONALIZER, ELECTRONIC, 2-SHOT
	OR		
9	SEC EL 002	1	SECTIONALIZER, ELECTRONIC, 3-SHOT

# F11

## ARRESTER STATION – VERTICAL CONSTRUCTION

OPTIONS: 3, 10, 21

BOLT PLATE: NONE



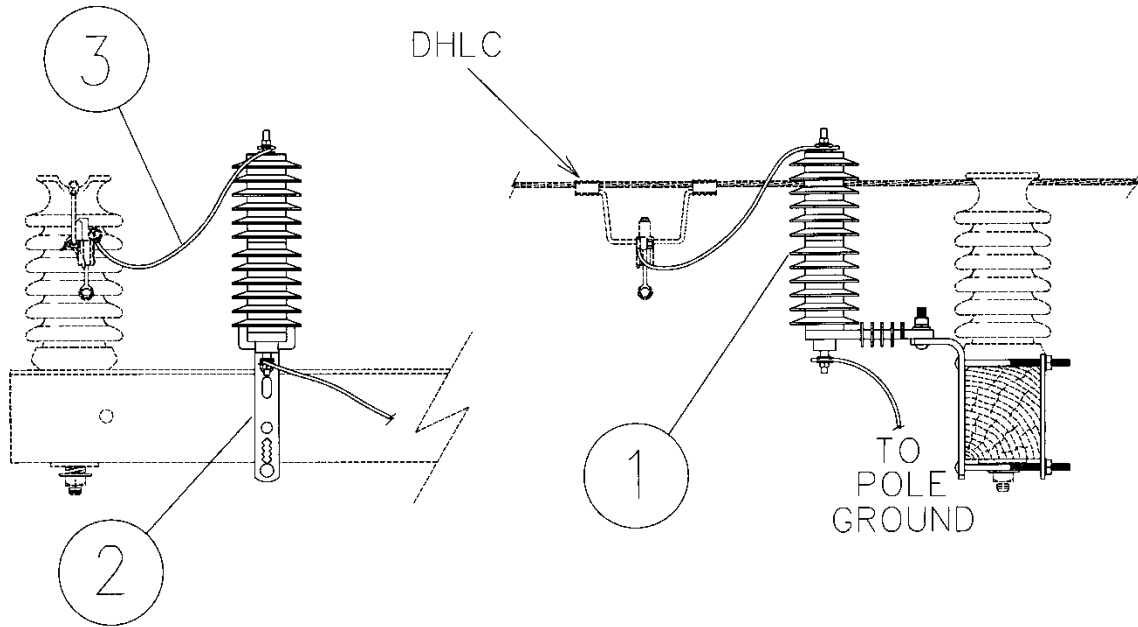
NO.	ITEM ID	QTY	DESCRIPTION
1	ARR LI ***	1	GENERAL CODE FOR ARRESTER, DISTRIBUTION CLASS, POLYMER
2	BOL MS 036	2	BOLT, MACHINE, SQUARE HEAD, 3/4X14
3	BKT AC 008	1	BRACKET, ARRESTER OR CUTOUT, SINGLE MOUNT, FIBERGLASS WITH RAYCHEM MATERIAL OVER ROD, TYPE: SINGLE PHASE
4	COB CO 028	12	CONDUCTOR, COPPER, #4 SOFT DRAWN
5	CNN VG 003	2	CONNECTOR, VISE TYPE, 6-2 SOL. 10-2 SOL.
6	WAS RD 005	4	WASHER, ROUND, 2 IN. DIA., FOR 3/4 IN. BOLT
7	WAS SP 002	2	WASHER, SPRING, DOUBLE HELIX, FOR 3/4 IN. BOLT
8	WAS SF 004	2	WASHER, SQUARE, FLAT, 3 IN., FOR 3/4 IN. BOLT

# F11-H

## ARRESTER STATION – HORIZONTAL CONSTRUCTION

OPTIONS: 3, 10, 21

BOLT PLATE: NONE

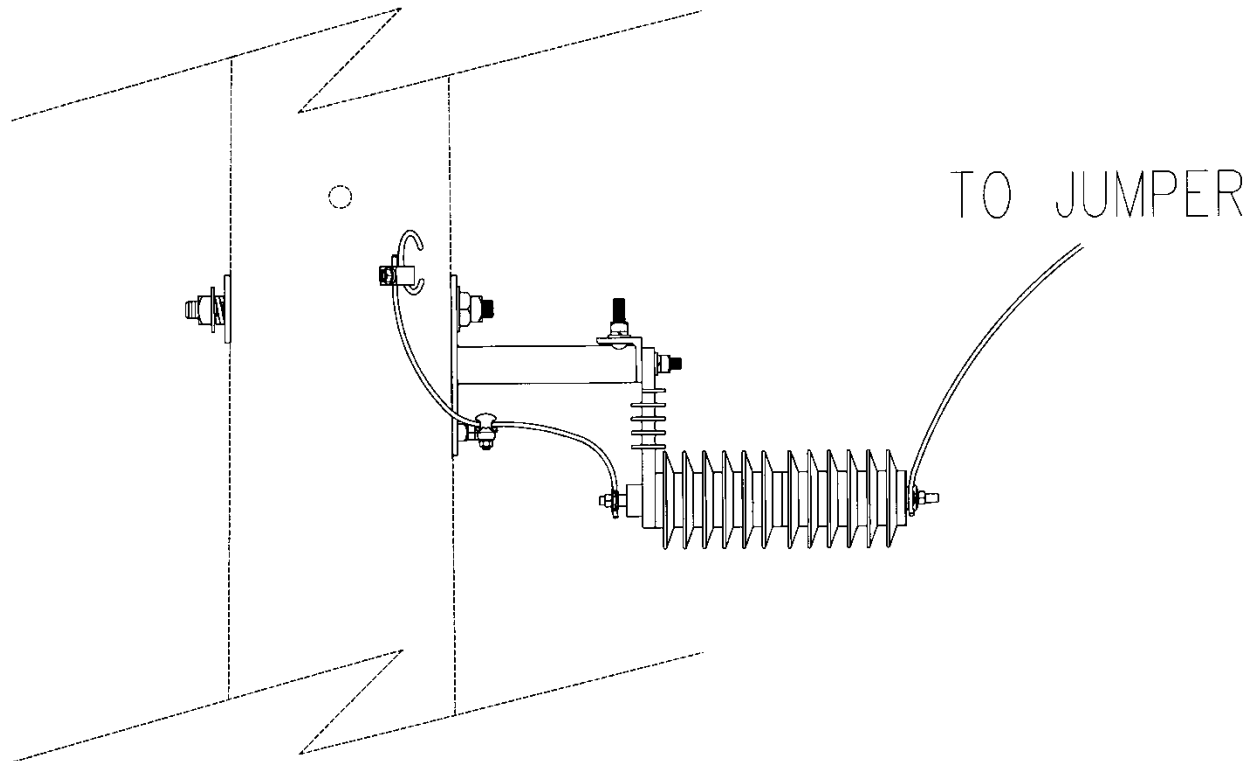


NO.	ITEM ID	QTY	DESCRIPTION
1	ARR LI ***	1	GENERAL CODE FOR ARRESTER, DISTRIBUTION CLASS, POLYMER, 21KV
2	BKT AC 003	1	BRACKET, CUTOUT OR ARRESTER, CROSSARM
3	COB CO 028	6	CONDUCTOR, COPPER, #4 SOFT DRAWN
4	CNN VG 003	1	CONNECTOR, VISE TYPE, 6-2 SOL. 10-2 SOL.

**F11-S****SWITCH ARRESTER STATION – ONE SIDE**

OPTIONS: 3, 10, 21

BOLT PLATE: NONE

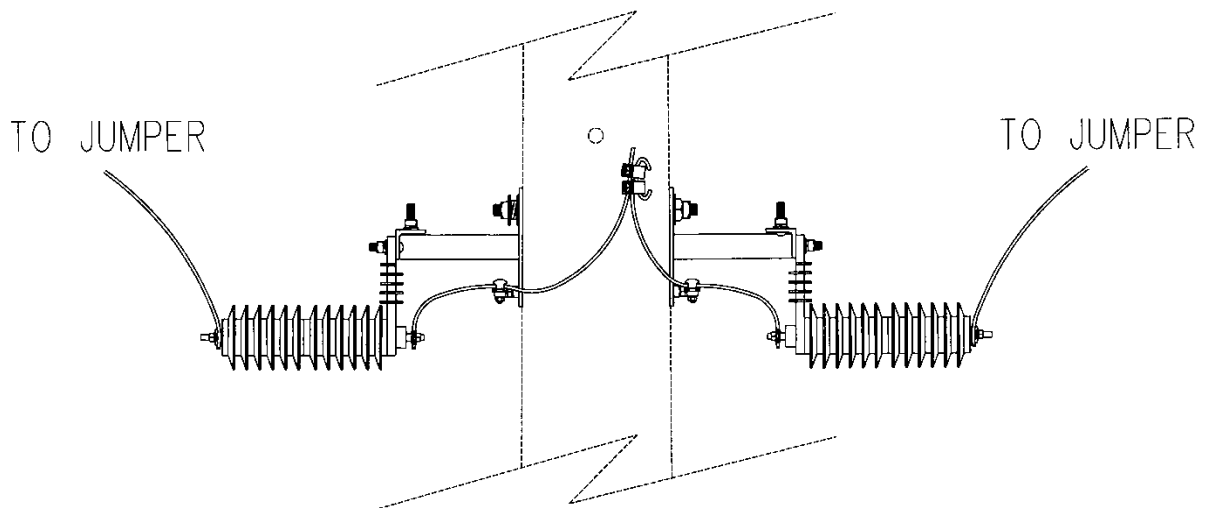


NO.	ITEM ID	QTY	DESCRIPTION
1	ARR LI ***	1	GENERAL CODE FOR ARRESTER, DISTRIBUTION CLASS, POLYMER, 21KV
2	BOL DA 015	1	BOLT, DOUBLE ARMING, 3/4X14
3	BKT RP 001	1	BRACKET, RISER POLE ARRESTER
4	CLA TG 001	1	CLAMP, TRANSFORMER TANK GROUND
5	CNN VG 003	1	CONNECTOR, VISE TYPE, 6-2 SOL. 10-2 SOL.
6	COB CO 028	6	CONDUCTOR, COPPER, #4 SOFT DRAWN
7	WAS RD 005	2	WASHER, ROUND, 2 IN. DIA., FOR 3/4 IN. BOLT
8	WAS SP 002	1	WASHER, SPRING, DOUBLE HELIX, FOR 3/4 IN. BOLT
9	WAS SF 004	1	WASHER, SQUARE, FLAT, 3 IN., FOR 3/4 IN. BOLT

**F11-SS****SWITCH ARRESTER STATION – TWO SIDES**

OPTIONS: 3, 10, 21

BOLT PLATE: NONE



NO.	ITEM ID	QTY	DESCRIPTION
1	ARR LI ***	2	GENERAL CODE FOR ARRESTER, DISTRIBUTION CLASS, POLYMER, 21KV
2	BOL DA 015	1	BOLT, DOUBLE ARMING, 3/4X14
3	BKT RP 001	2	BRACKET, RISER POLE ARRESTER
4	CLA TG 001	2	CLAMP, TRANSFORMER TANK GROUND
5	CNN VG 003	2	CONNECTOR, VISE TYPE, 6-2 SOL. 10-2 SOL.
6	COB CO 028	12	CONDUCTOR, COPPER, #4 SOFT DRAWN
7	WAS RD 005	3	WASHER, ROUND, 2 IN. DIA., FOR 3/4 IN. BOLT
8	WAS SP 002	1	WASHER, SPRING, DOUBLE HELIX, FOR 3/4 IN. BOLT



**FCRDA (FOR REFERENCE ONLY)****NOVA THREE-PHASE RECLOSER**

OPTIONS: TIE

BOLT PLATE: NONE

NO.	ITEM ID	QTY	DESCRIPTION
1	ANC ST 001	30	ANCHOR, STUD BOLT, 1/4 X 3/4 IN.
2	BKT RE 001	1	BRACKET, RECLOSER JUMPER PIN
3	BOL DA 015	2	BOLT, DOUBLE ARMING, 3/4 X 14
4	BOL DA 016	4	BOLT, DOUBLE ARMING, 3/4 X 16
5	BOL MS 037	2	BOLT, MACHINE, SQUARE HEAD, 3/4X16
6	BOL MS 038	2	BOLT, MACHINE, SQUARE HEAD, 3/4X18
7	BOL TE 001	12	BOLT, TERMINAL KIT
8	CLA AR 003	6	CLAMP, ARRESTER HOT-LINE, 336-636
9	CLA TG 001	6	CLAMP, TRANS. TANK GROUND
10	COB AA 026	60	GENERAL CODE FOR 636MCM ALUMINUM CONDUCTOR
11	COB CO 028	20	CONDUCTOR, COPPER, #4 SOFT DRAWN
12	CNN TA 004	6	CONNECTOR, TAP, 636-636
13	CNN TE 047	6	CONNECTOR, TERMINAL, 2/0-800MCM
14	CNN VG 003	8	CONNECTOR, VISE TYPE, 6-2 SOL. 10-2 SOL.
15	INS VP 001	2	INSULATOR, POST, 34.5kV
16	LOC PA 002	2	PADLOCK, BRASS
17	NUT PG 300	30	NUT, 1/4 - 20
18	REC CK 001	1	NOVA RECLOSER CABLE KIT
19	REC CO 001	1	NOVA FORM 5 CONTROL
20	REC DA 002	1	NOVA RECLOSER W/ 6 PT'S
21	STP ST 001	20	STRAP, STEEL, 1 IN.
22	WAS RD 002	30	WASHER, ROUND 1 IN. FOR 3/8 BOLT
23	WAS RD 005	17	WASHER, ROUND, 2 IN. DIA., FOR 3/4 IN. BOLT
24	WAS SF 003	4	WASHER, SQUARE, FLAT, 3 IN., FOR 3/4 IN. BOLT
25	WAS SP 002	7	WASHER, SPRING, DOUBLE HELIX, FOR 3/4 IN. BOLT

**NOTES:**

Recloser must be installed on a Class H concrete pole only.

The plate DS3-5 is used for bypassing the recloser for horizontal construction, and must be plated in addition to this construction standard. Also, the wood crossarms and braces need to be itemized out, and the steel crossarms itemized in. The plate DS5-5 is used for bypassing with vertical construction. The plate ANTENNA must be plated separate also.

The new NOVA design is self-powered. Therefore, NO external 120V source is required.

## FCRDA (FOR REFERENCE ONLY)

### NOVA THREE-PHASE RECLOSER – VERTICAL CONSTRUCTION



**NOTE:** Antenna shown is not correct. A Yagi-type antenna is supplied with the ANTENNA plate as shown on the NOVA horizontal construction standard. Notice DS5-5 plate on back of pole used for bypassing the recloser.

## **FCRDA (FOR REFERENCE ONLY)**

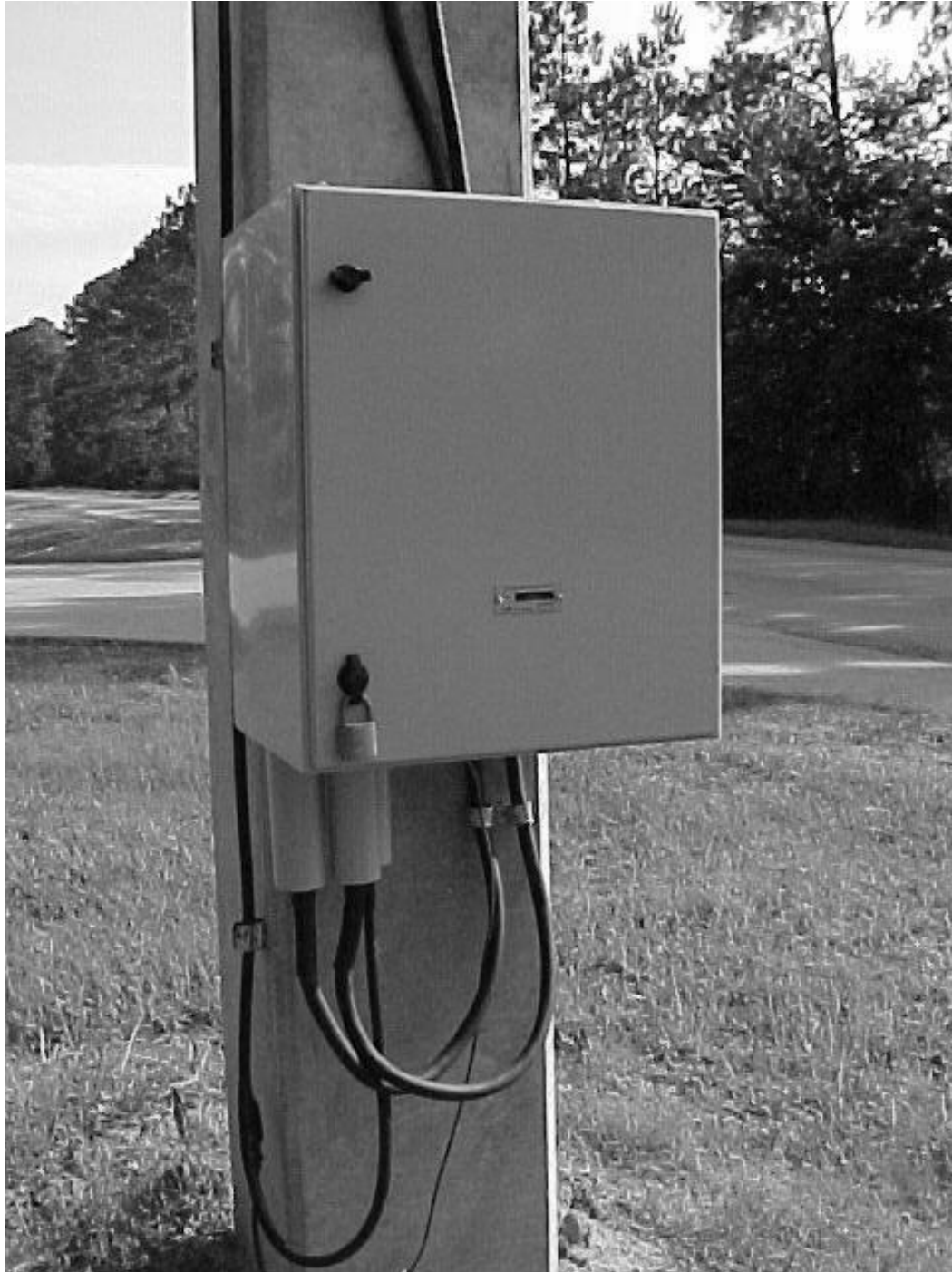
### **NOVA THREE-PHASE RECLOSER – HORIZONTAL CONSTRUCTION**



**NOTE:** Use steel crossarms on concrete pole as shown. Plate DS3-5 must be modified using item plates to do this. Aim yagi-type antenna as directed by Communications Group. Antenna is plated separately using the ANTENNA plate.

# FCRDA (FOR REFERENCE ONLY)

## NOVA THREE-PHASE RECLOSER – CONTROL INSTALLATION



# ANTENNA

## ANTENNA FOR RECLOSER COMMUNICATION

NO.	ITEM ID	QTY	DESCRIPTION
1	ANC ST 001	16	ANCHOR, STUD BOLT 1/4X3/4 IN.
2	BOL AN 002	16	BOLT, ANCHOR 1/4 IN. DIA. W/ WASHER
3	BOL MS 036	2	BOLT, MACHINE, SQUARE HEAD, 3/4X14
4	CNN VG 003	2	CONNECTOR, VISE TYPE, 6-2 SOL. 10-2 SOL.
5	COD PC 016	20	CONDUIT, PVC, 1 IN. SCH40
6	COD SC 002	6	STRAP, PVC CONDUIT, 1 IN.
7	NUT PG 300	16	NUT, 1/4 IN.-20
8	RAD AN 002	1	ANTENNA, YAGI, 10DBI GAIN, 890-960 MHZ
9	RAD GR 001	2	ANTENNA GROUNDING KIT
10	RAD HG 001	1	COAXIAL CABLE HANGER KIT
11	RAD MP 001	1	1-1/2 IN. MOUNTING PIPE FOR ANTENNA
12	RAD MT 001	1	CLAMP, ANTENNA MOUNTING
13	STP ST 001	6	STRAP, CONDUIT, STEEL, 1 IN.
14	WAS RD 002	16	WASHER, ROUND, 1 IN. DIA. FOR 3/8 IN. BOLT
15	WAS RD 005	4	WASHER, ROUND, 2 IN. DIA., FOR 3/4 IN. BOLT
16	WAS SF 003	2	WASHER, SQUARE, FLAT, 3 IN., FOR 3/4 IN. BOLT
17	WAS SP 002	2	WASHER, SPRING, DOUBLE HELIX, FOR 3/4 IN. BOLT

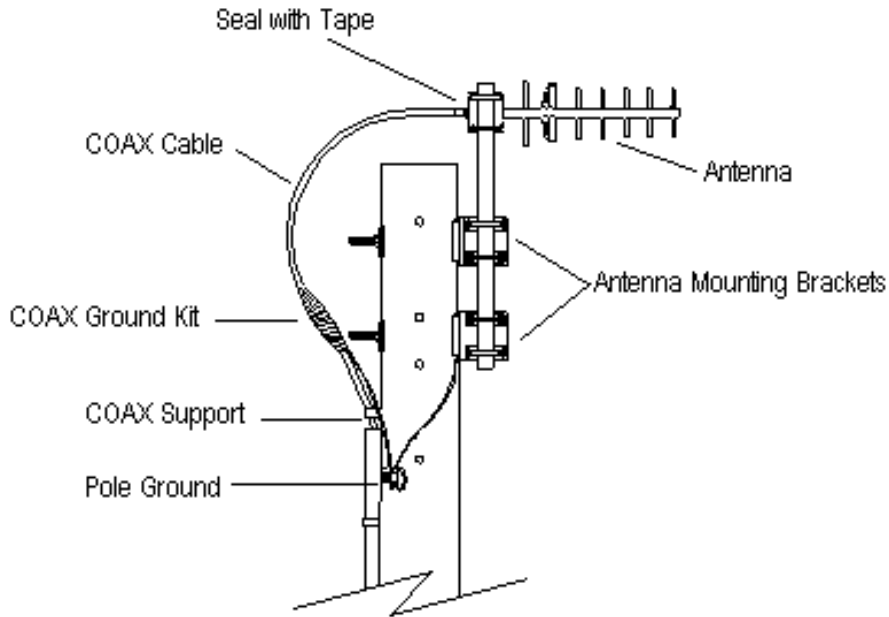
# ANTENNA

## ANTENNA FOR RECLOSER COMMUNICATION

OPTIONS: NONE

BOLT PLATE: NONE

### POLETOP DETAIL



#### INSTALLATION NOTES:

1. The coaxial cable kit is now supplied with the plate. The kit consists of the coaxial cable, pre-cold shrunk ground kit, and pre-made coaxial connector for antenna connection.
2. The antenna is to be mounted to the pipe and the pipe connected to the bayonet with the antenna mounting brackets rather than mounting the pipe to the pole.
3. Aim Yagi antenna as directed by the individual jobs. A compass is to be provided by the coordinator.
4. Install a coaxial support bracket above PVC pipe. Space the other supports four to five feet apart below the PVC pipe. Support the PVC pipe every 3 to 4 feet.
5. Bond the grounding strap installed on the coaxial cable to the pole ground using the connector "CNNVG003". Cut the Ground wire from the Coax to make the ground as short as possible, Do not make a curve in the ground wire. Orient the strap as shown. Ground antenna pipe to pole ground.
6. The PVC shall be run all the way down to the top of the control box.
7. The coaxial cable is to be coiled up and tie-wrapped to the control box.
8. The Telecommunications Group will then connect the coaxial cable to the box and install the radio.



# FARS

## SINGLE-PHASE RECLOSERS – VERTICAL CONSTRUCTION

### SINGLE-PHASE APPLICATION

NO.	ITEM ID	QTY	DESCRIPTION
1	BKT AC 007	1	BRACKET; CUTOUT OR ARRESTER
2	ARR LI 003	2	ARRESTER; LIGHTNING 21KV POLYMER
3	BKT RP 001	2	BRACKET; RISER POLE ARRESTER
4	BKT TM 001	1	BRACKET; TRANSFORMER MOUNTING SIGNLE MOUNT
5	BOL MS 015	2	BOLT; MACHINE; SQUARE HEAD 5/8 X 2
6	BOL MS 036	5	BOLT; MACHINE; SQUARE HEAD ¾ X 14
7	CLA TG 001	3	CONNECTOR; TRANSFORMER TANK GROUND
8	CNN VG 003	3	CONNECTOR; VISE TYPE 6-2 SOL 10-2 SOL
9	COB CO 025	6	CONDUCTOR; BARE CU 6 SOL SOFT DRAWN
10	COB CO 028	30	CONDUCTOR; BARE CU 4 SOL SOFT DRAWN
11	CUT OT 004	1	CUTOUT; FUSED; 150KV BIL; 100 AMP; 27KV
12	FUS OH 011	1	FUSE LINK; TYPE T 100 AMP
13	INS VP 001	1	INSULATOR; POST 35KV
14	REC SP 001	1	70-A, 26 INCH CREEP BUSHINGS
15	STU LI 001	1	STUD; LINE POST ¾ HEAD-3/4 DIA X 1-3/4
16	WAS RD 005	16	WASHER; ROUND 2 DIA. ¾ BOLT
17	WAS SF 004	4	WASHER; SQ. FLAT 4 SQ. X ¼ IN. 7/8 BOLT
18	WAS SP 002	8	WASHER; SPRING DOUBLE HELIX FOR ¾ IN.

# FARS

## SINGLE-PHASE RECLOSERS – VERTICAL CONSTRUCTION

### SINGLE-PHASE APPLICATION





# FBRS

## SINGLE-PHASE RECLOSERS – VERTICAL CONSTRUCTION

### 2-PHASE APPLICATION

NO.	ITEM ID	QTY	DESCRIPTION
1	ARR LI 003	4	ARRESTER; LIGHTNING 21KV POLYMER
2	BKT AC 007	2	BRACKET; CUTOUT OR ARRESTER
3	BKT RE 001	1	BRACKET; 3-PHASE RECLOSER OR SECT. JUMPER
4	BKT RP 001	4	BRACKET; RISER POLE ARRESTER
5	BKT TM 001	2	BRACKET; TRANSFORMER MOUNTING SIGNLE MOUNT
6	BOL MS 015	4	BOLT; MACHINE; SQUARE HEAD 5/8 X 2
7	BOL MS 036	10	BOLT; MACHINE; SQUARE HEAD ¾ X 14
8	CLA TG 001	6	CONNECTOR; TRANSFORMER TANK GROUND
9	CNN VG 003	6	CONNECTOR; VISE TYPE 6-2 SOL 10-2 SOL
10	COB CO 025	6	CONDUCTOR; BARE CU 6 SOL SOFT DRAWN
11	COB CO 028	40	CONDUCTOR; BARE CU 4 SOL SOFT DRAWN
12	CUT OT 004	2	CUTOUT; FUSED; 150KV BIL; 100 AMP; 27KV
13	FUS OH 011	2	FUSE LINK; TYPE T 100 AMP
14	INS VP 001	2	INSULATOR; POST 35KV
15	REC SP 001	2	70-A, 26 INCH CREEP BUSHINGS
16	STU LI 001	2	STUD; LINE POST ¾ HEAD-3/4 DIA X 1-3/4
17	WAS RD 005	24	WASHER; ROUND 2 DIA. ¾ BOLT
18	WAS SF 004	4	WASHER; SQ. FLAT 4 SQ. X ¼ IN. 7/8 BOLT
19	WAS SP 002	10	WASHER; SPRING DOUBLE HELIX FOR ¾ IN.

# **FBRS**

**SINGLE-PHASE RECLOSERS – VERTICAL CONSTRUCTION**

**2-PHASE APPLICATION**

**OPTIONS: 2**

**BOLT PLATE: NONE**



## FCRSH

### SINGLE-PHASE RECLOSERS – HORIZONTAL CONSTRUCTION

### 3-PHASE APPLICATION

OPTIONS: 70\*2, 70\*1/0, 200\*2, 200\*1/0

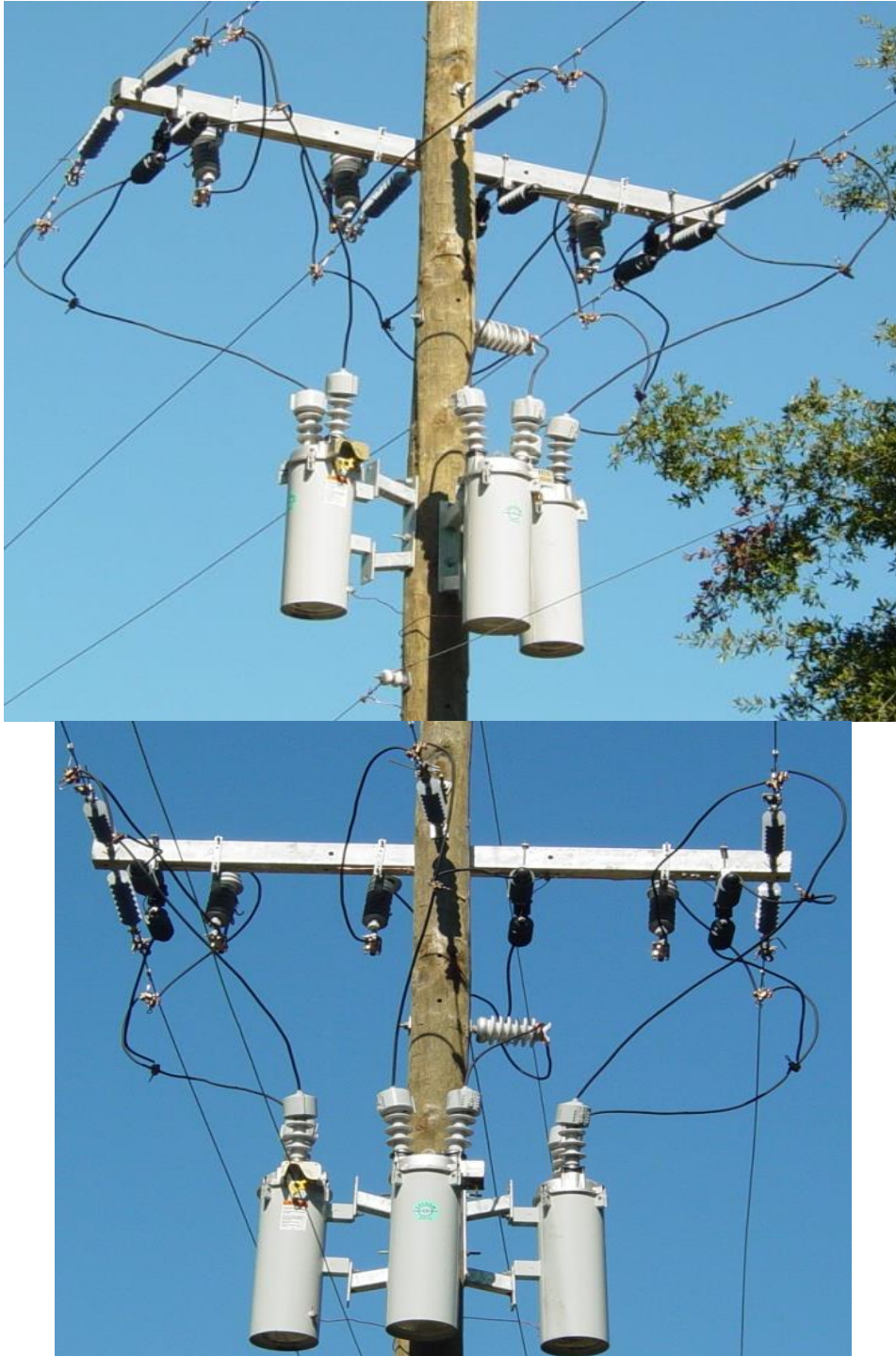
NO.	ITEM ID	QTY	DESCRIPTION
1	ARR LI 003	6	ARRESTER; LIGHTNING 21KV POLYMER
2	BKT AC 003	9	BRACKET; CROSSARM MOUNTING CUTOUTS OR ARRESTERS
3	BKT TM 001	3	BRACKET; TRANSFORMER MOUNTING SINGLE MOUNT
4	BOL DA 015	1	BOLT; DOUBLE ARMING ¾ x 14
5	BOL DA 016	2	BOLT; DOUBLE ARMING ¾ x 16
6	BOL DA 021	8	BOLT; DOUBLE ARMING ¾ x 26
7	BOL MS 015	6	BOLT; MACHINE; SQUARE HEAD 5/8 x 2
8	BOL MS 036	3	BOLT; MACHINE; SQUARE HEAD 3/4 x 14
9	CLA HL 001	12	CLAMP; HOTLINE 6SOL-1/0STR
10	CLA SS 004	6	CLAMP; STRAIGHT STRAIN 4-3/0 AL
11	CLA TG 001	3	CONNECTOR; TRANSFORMER TANK GROUND
12	CNN VG 003	6	CONNECTOR; VISE TYPE 6-2 SOL 10-2 SOL
13	COB CO 028	24	CONDUCTOR; BARE CU 4 SOL SOFT DRAWN
14	CUT OT 004	3	CUTOUT; FUSED, 150KV BIL, 100 AMP, 27KV
15	FUS OH 011	3	FUSE, OVERHEAD DISTRIBUTION, 100T FULL LINK DESIGNATION
16	CXA FG 001	1	CROSSARM; FIBERGLASS, 3 5/8" x 4 5/8" X 10'
17	GUA AN 002	6	GUARD; ANIMAL, MINI SHED MOUNT
18	GUA AN 006	3	GUARD; ANIMAL, FOR FUSE CUTOUTS, JEA UNIVERSAL DESIGN
19	INS CO 001	6	INSULATOR; DEADEND, SILICONE RUBBER, 34.5 KV
20	INS VP 001	1	INSULATOR; POST 35KV
21	NUT EY 003	6	NUT; EYE 3/4
22	WAS RD 005	35	WASHER; ROUND 2 DIA. ¾ BOLT
23	WAS SF 003	4	WASHER; SQ. FLAT 3 SQ. x ¼ in. 5/8 & ¾ BOLT
24	WAS SP 002	10	WASHER; SPRING DOUBLE HELIX FOR ¾ in.
25	REC SP ***	3	GENERAL CODE FOR RECLOSER, SINGLE-PHASE, 150KV BIL
26	CAI RH ***	75	GENERAL CODE FOR COVERED TAP WIRE

# **FCRSH**

## **SINGLE-PHASE RECLOSERS – HORIZONTAL CONSTRUCTION**

### **3-PHASE APPLICATION**

**OPTIONS:** 70\*2, 70\*1/0, 200\*2, 200\*1/0



## FCRSV

### SINGLE-PHASE RECLOSERS – VERTICAL CONSTRUCTION

### 3-PHASE APPLICATION

OPTIONS: 70\*2, 70\*1/0, 200\*2, 200\*1/0

NO.	ITEM ID	QTY	DESCRIPTION
1	ARR LI 003	6	ARRESTER; LIGHTNING 21KV POLYMER
2	BKT AC 007	3	BRACKET, ARRESTER OR CUTOUT, MODIFIED WISHBONE TYPE
3	BKT RP 001	6	BRACKET, RISER POLE ARRESTER
4	BKT TM 001	3	BRACKET; TRANSFORMER MOUNTING SINGLE MOUNT
5	BOL DA 015	2	BOLT; DOUBLE ARMING ¾ x 14
6	BOL DA 016	8	BOLT; DOUBLE ARMING ¾ x 16
7	BOL MS 015	6	BOLT; MACHINE; SQUARE HEAD 5/8 x 2
8	BOL MS 036	3	BOLT; MACHINE; SQUARE HEAD 3/4 x 14
9	BOL MS 037	4	BOLT; MACHINE; SQUARE HEAD 3/4 x 16
10	CLA HL 001	12	CLAMP, HOTLINE 6SOL-1/0STR
11	CLA SS 004	6	CLAMP; STRAIGHT STRAIN 4-3/0 AL
12	CLA TG 001	3	CONNECTOR; TRANSFORMER TANK GROUND
13	CNN VG 003	6	CONNECTOR; VISE TYPE 6-2 SOL 10-2 SOL
14	COB CO 028	24	CONDUCTOR; BARE CU 4 SOL SOFT DRAWN
15	CUT OT 004	3	CUTOUT, FUSED, 150KV BIL, 100 AMP, 27KV
16	FUS OH 011	3	FUSE, OVERHEAD DISTRIBUTION, 100T FULL LINK DESIGNATION
17	GUA AN 002	6	GUARD, ANIMAL, FOR USE WITH ENERGIZED TRANSFORMERS
18	GUA AN 006	3	GUARD, ANIMAL, FOR FUSE CUTOUTS, JEA UNIVERSAL DESIGN
19	INS CO 001	6	INSULATOR; DEADEND, SILICONE RUBBER, 34.5 KV
20	NUT EY 003	6	NUT; EYE 3/4
21	WAS RD 005	35	WASHER; ROUND 2 DIA. ¾ BOLT
22	WAS SF 003	4	WASHER; SQ. FLAT 3 SQ. x ¼ in. 5/8 & ¾ BOLT
23	WAS SP 002	10	WASHER; SPRING DOUBLE HELIX FOR ¾ in.
24	REC SP ***	3	GENERAL CODE FOR RECLOSER, SINGLE-PHASE, 150KV BIL
25	CAI RH ***	75	GENERAL CODE FOR COVERED TAP WIRE

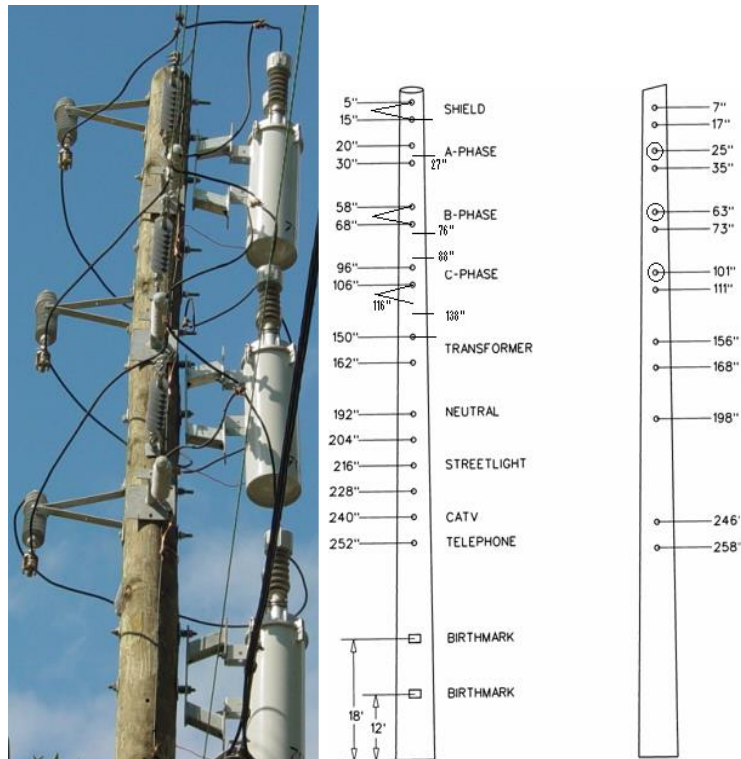


# FCRSV

## SINGLE-PHASE RECLOSERS – VERTICAL CONSTRUCTION

### 3-PHASE APPLICATION

OPTIONS: 70\*2, 70\*1/0, 200\*2, 200\*1/0



**AR-TSE****OVR-3SP THREE-PHASE RECLOSER – VERTICAL CONSTRUCTION**

OPTIONS: TIE

BOLT PLATE: NONE

NO.	ITEM ID	QTY	DESCRIPTION
1	ANC ST 001	30	ANCHOR, STUD BOLT, 1/4 X 3/4 IN.
2	ADC MI 002	1	CEMENT; PVC PIPE
3	BKT RE 001	1	BRACKET, RECLOSER JUMPER PIN
4	BOL DA 015	2	BOLT, DOUBLE ARMING, 3/4 X 14
5	BOL DA 016	5	BOLT, DOUBLE ARMING, 3/4 X 16
6	BOL MS 037	2	BOLT, MACHINE, SQUARE HEAD, 3/4X16
7	BOL MS 038	2	BOLT, MACHINE, SQUARE HEAD, 3/4X18
8	BOL TE 001	24	BOLT, TERMINAL KIT
9	CAI RH 010	30	#4 COVERED COPPER
10	CAI UF 001	40	CABLE, STREETLIGHT UF 12 CU 2/C
11	CLA AR 003	6	CLAMP, ARRESTER HOT-LINE, 336-636
12	CLA TG 001	6	CLAMP, TRANS. TANK GROUND
13	COB AA 026	90	GENERAL CODE FOR 636MCM ALUMINUM CONDUCTOR
14	COB CO 028	40	CONDUCTOR, COPPER, #4 SOFT DRAWN
15	COB TW 004	20	TIE WIRE, ALUMINUM INSULATED
16	CNN TA 004	6	CONNECTOR, TAP, 636-636
17	CNN TL 029	6	TERMINAL; COMPRESSION, 4 HOLE, 636AAC
18	CNN VG 003	8	CONNECTOR, VISE TYPE, 6-2 SOL. 10-2 SOL.
19	COD AF 010	1	1" SCHEDULE 40 PVC LB
20	FUS OH 005	1	FUSE, OVERHEAD DISTRIBUTION, 23" MINIMUM LENGTH, 25T.
21	COD EF 002	2	CONNECTOR, FLEXIBLE PVC, 90 DEGREE; 1 IN
22	COD PC 016	40	CONDUIT; PVC; 1 IN DIA; SCHEDULE 40
23	COD PC 017	10	CONDUIT; FLEXIBLE PVC; 1 IN DIA
24	COD WH 002	1	WEATHERHEAD; PVC; FOR 1 IN DIA PIPE
25	GUA AN 007	6	GUARD, ANIMAL, FOR ARRESTERS
26	INS VP 001	2	INSULATOR, POST, 34.5kV
27	LOC PA 002	2	PADLOCK, BRASS
28	NUT PG 300	30	NUT, 1/4 - 20
29	SWE RC 002	1	RECLOSER, CONTROL, FOR USE WITH SWE RC 001
30	REC GU 001	6	GUARD, ANIMAL, RECLOSER TERMINAL COVER
31	REC GU 002	100	GUARD, ANIMAL, RECLOSER LINE INSULATION
32	SWE RC 001	1	RECLOSER, THREE-PHASE, WITH 3 INTERNAL VOLTAGE SENSORS
33	STP ST 001	25	STRAP, STEEL, 1 IN.
34	FUS UG 046	1	FUSE, 1-TIME, 20-AMP, 125-VOLT, FERRULE TYPE-B
35	TIE CA 002	25	TIE, CABLE, 24" LENGTH
36	WAS RD 002	30	WASHER, ROUND 1 IN. FOR 3/8 BOLT
37	WAS RD 005	17	WASHER, ROUND, 2 IN. DIA., FOR 3/4 IN. BOLT
38	WAS SF 003	4	WASHER, SQUARE, FLAT, 3 IN., FOR 3/4 IN. BOLT

# AR-TSE

## OVR-3SP THREE-PHASE RECLOSER – VERTICAL CONSTRUCTION

### NOTES:

- 1) Pre-crimped jumper CNN JU 001 includes the jumper and pad connector.
- 2) The pad-to-pad connection shall be torqued to 40 ft-lbs.
- 3) The control box is powered with 120V. Streetlight 12/2 is to be run from the secondary, into the weatherhead, through the 1" PVC pipe, into the PVC LB, to the AC disconnect, then to the control box via 1" flexible PVC and 90 degree connectors. Inside, the hot leg is connected to L1 and the neutral to L2.
- 4) The control cables are run from each recloser to the junction box at the appropriate phase and a single control cable is run down the pole via 1" steel straps and connected to the bottom of the control box. Any slack should be coiled and tied with cable ties.
- 5) Each individual recloser and each side frame shall be grounded.
- 6) The recloser line insulation shall cover the 636AAC jumper from the 4 hole terminal connector to the wedge tap connector. It should only be cut to install the arrester clamp.
- 7) The recloser channel should be installed in the transformer positions. The top two holes are 12" apart and the third hole is 50.75" from the top hole.





## **AR-TSE**

### **OVR-3SP THREE-PHASE RECLOSER – VERTICAL CONSTRUCTION**



# AR-TSE

## OVR-3SP THREE-PHASE RECLOSER – CONTROL INSTALLATION



## AR-TSH

### OVR-3SP THREE-PHASE RECLOSER – HORIZONTAL CONSTRUCTION

OPTIONS: TIE

BOLT PLATE: NONE

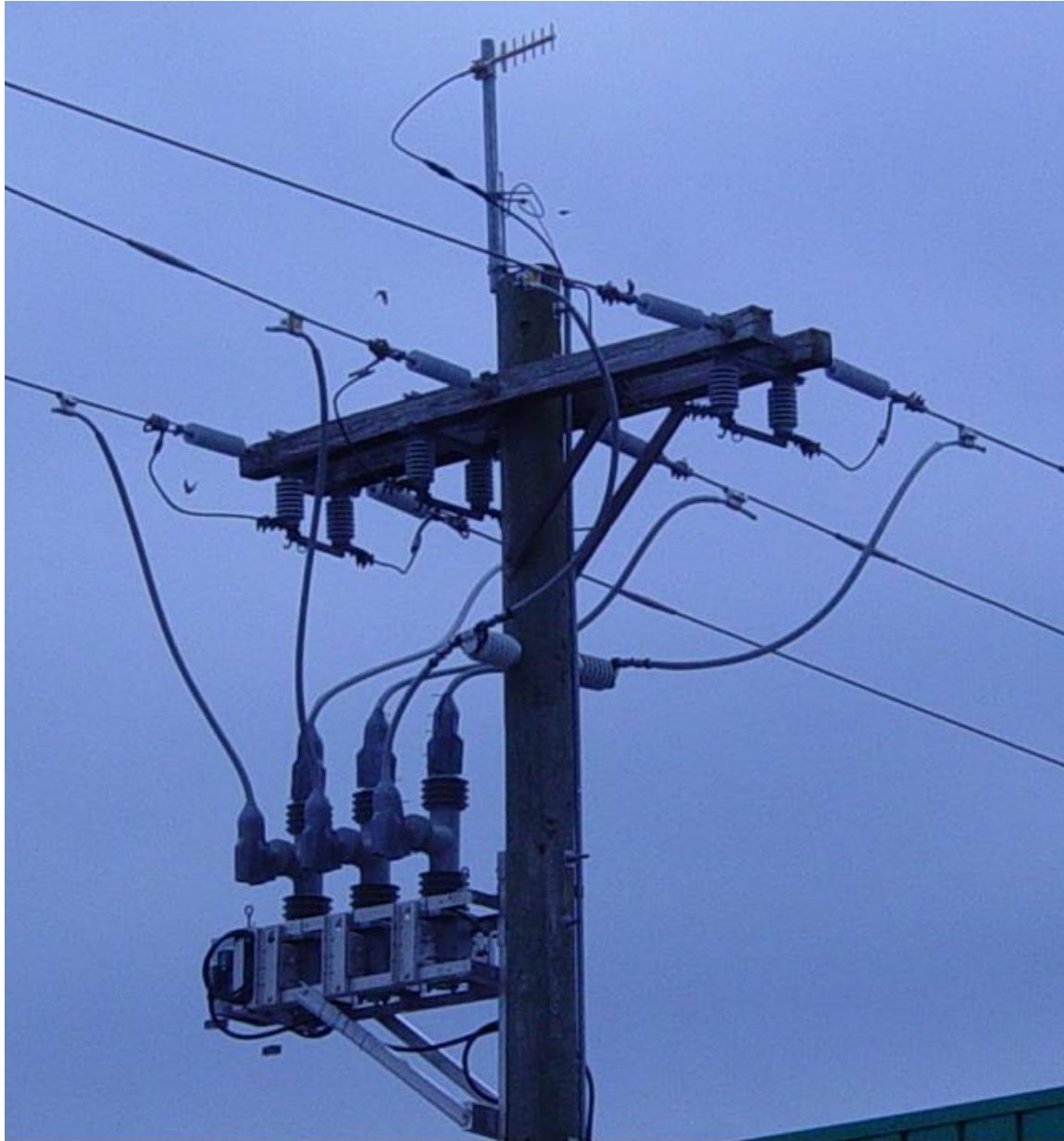
NO.	ITEM ID	QTY	DESCRIPTION
1	ANC ST 001	30	ANCHOR, STUD BOLT, 1/4 X 3/4 IN.
2	ADC MI 002	1	CEMENT; PVC PIPE
3	BOL DA 015	2	BOLT, DOUBLE ARMING, 3/4 X 14
4	BOL DA 016	5	BOLT, DOUBLE ARMING, 3/4 X 16
5	BOL MS 037	2	BOLT, MACHINE, SQUARE HEAD, 3/4X16
6	BOL MS 038	2	BOLT, MACHINE, SQUARE HEAD, 3/4X18
7	BOL TE 001	24	BOLT, TERMINAL KIT
8	CAI RH 010	30	#4 COVERED COPPER
9	CAI UF 001	40	CABLE, STREETLIGHT UF 12 CU 2/C
10	CLA AR 003	6	CLAMP, ARRESTER HOT-LINE, 336-636
11	CLA TG 001	6	CLAMP, TRANS. TANK GROUND
12	COB AA 026	90	GENERAL CODE FOR 636MCM ALUMINUM CONDUCTOR
13	COB CO 028	40	CONDUCTOR, COPPER, #4 SOFT DRAWN
14	COB TW 004	20	TIE WIRE, ALUMINUM INSULATED
15	CNN TA 004	6	CONNECTOR, TAP, 636-636
16	CNN TL 029	6	TERMINAL; COMPRESSION, 4 HOLE, 636AAC
17	CNN VG 003	8	CONNECTOR, VISE TYPE, 6-2 SOL. 10-2 SOL.
18	COD AF 010	1	1" SCHEDULE 40 PVC LB
19	FUS OH 005	1	FUSE, OVERHEAD DISTRIBUTION, 23" MINIMUM LENGTH, 25T.
20	COD EF 002	2	CONNECTOR, FLEXIBLE PVC, 90 DEGREE; 1 IN
21	COD PC 016	40	CONDUIT; PVC; 1 IN DIA; SCHEDULE 40
22	COD PC 017	10	CONDUIT; FLEXIBLE PVC; 1 IN DIA
23	COD WH 002	1	WEATHERHEAD; PVC; FOR 1 IN DIA PIPE
24	GUA AN 007	6	GUARD, ANIMAL, FOR ARRESTERS
25	INS VP 001	2	INSULATOR, POST, 34.5kV
26	LOC PA 002	2	PADLOCK, BRASS
27	NUT PG 300	30	NUT, 1/4 - 20
28	SWE RC 002	1	RECLOSER, CONTROL, FOR USE WITH SWE RC 001
29	REC GU 001	6	GUARD, ANIMAL, RECLOSER TERMINAL COVER
30	REC GU 002	100	GUARD, ANIMAL, RECLOSER LINE INSULATION
31	SWE RC 001	1	RECLOSER, THREE-PHASE, WITH 3 INTERNAL VOLTAGE SENSORS
32	STP ST 001	25	STRAP, STEEL, 1 IN.
33	FUS UG 046	1	FUSE, 1-TIME, 20-AMP, 125-VOLT, FERRULE TYPE-B
34	TIE CA 002	25	TIE, CABLE, 24" LENGTH
35	WAS RD 002	30	WASHER, ROUND 1 IN. FOR 3/8 BOLT
36	WAS RD 005	17	WASHER, ROUND, 2 IN. DIA., FOR 3/4 IN. BOLT
37	WAS SF 003	4	WASHER, SQUARE, FLAT, 3 IN., FOR 3/4 IN. BOLT

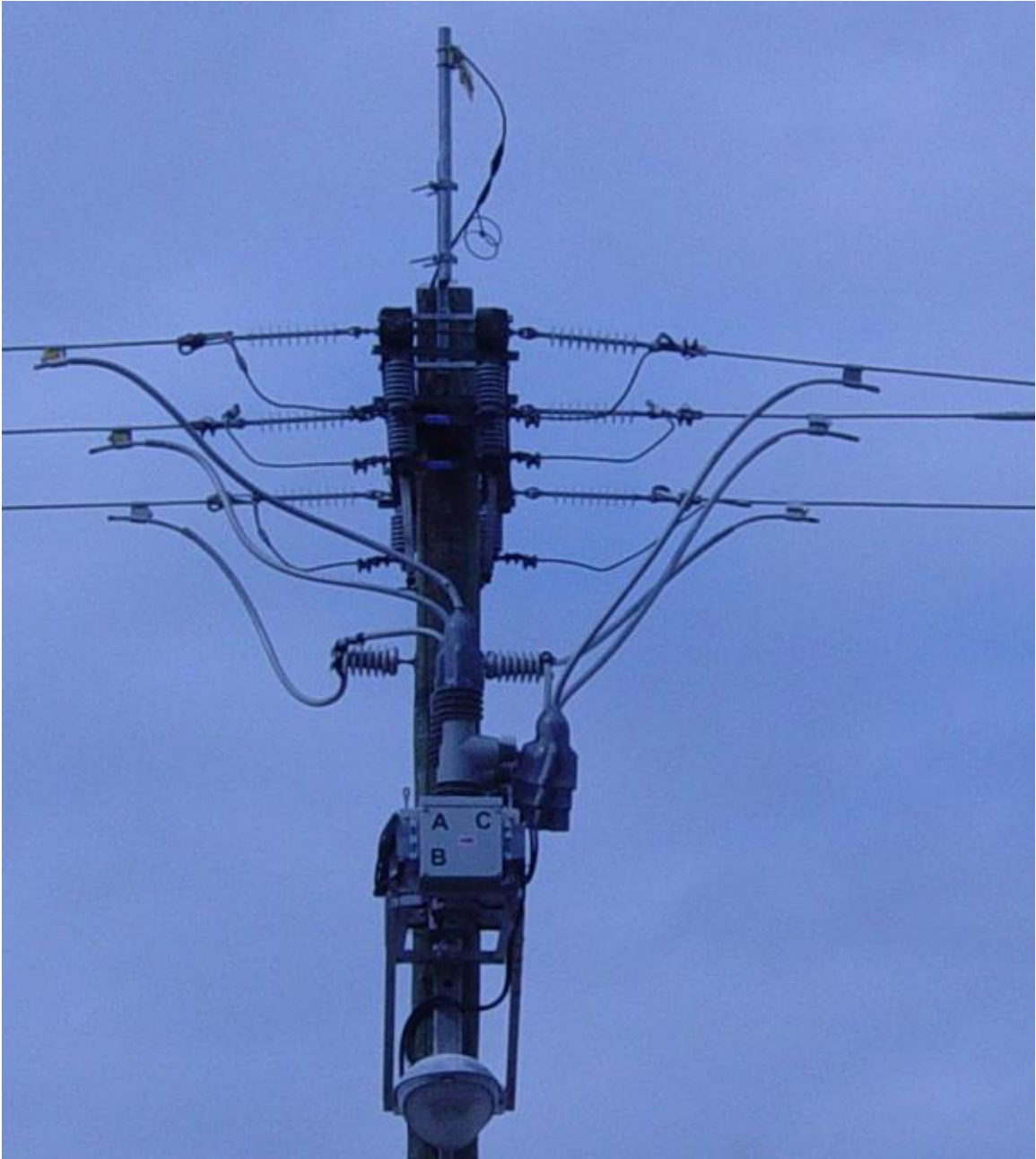
The material in plate is the same as AR-TSE, except that there is no recloser spreader bracket BKT RE 001.



# AR-TSH

## OVR-3SP THREE-PHASE RECLOSER – HORIZONTAL CONSTRUCTION





## DG-TSE

### OVR-3SP THREE-PHASE RECLOSER – VERTICAL CONSTRUCTION

OPTIONS: TIE

BOLT PLATE: NONE

NO.	ITEM ID	QTY	DESCRIPTION
1	ANC ST 001	30	ANCHOR, STUD BOLT, 1/4 X 3/4 IN.
2	ADC MI 002	1	CEMENT; PVC PIPE
3	BKT RE 001	1	BRACKET, RECLOSER JUMPER PIN
4	BOL DA 015	2	BOLT, DOUBLE ARMING, 3/4 X 14
5	BOL DA 016	5	BOLT, DOUBLE ARMING, 3/4 X 16
6	BOL MS 037	2	BOLT, MACHINE, SQUARE HEAD, 3/4X16
7	BOL MS 038	2	BOLT, MACHINE, SQUARE HEAD, 3/4X18
8	BOL TE 001	24	BOLT, TERMINAL KIT
9	CAI RH 010	30	#4 COVERED COPPER
10	CAI UF 001	40	CABLE, STREETLIGHT UF 12 CU 2/C
11	CLA AR 003	6	CLAMP, ARRESTER HOT-LINE, 336-636
12	CLA TG 001	6	CLAMP, TRANS. TANK GROUND
13	COB AA 026	90	GENERAL CODE FOR 636MCM ALUMINUM CONDUCTOR
14	COB CO 028	40	CONDUCTOR, COPPER, #4 SOFT DRAWN
15	COB TW 004	20	TIE WIRE, ALUMINUM INSULATED
16	CNN TA 004	6	CONNECTOR, TAP, 636-636
17	CNN TL 029	6	TERMINAL; COMPRESSION, 4 HOLE, 636AAC
18	CNN VG 003	8	CONNECTOR, VISE TYPE, 6-2 SOL. 10-2 SOL.
19	COD AF 010	1	1" SCHEDULE 40 PVC LB
20	FUS OH 005	1	FUSE, OVERHEAD DISTRIBUTION, 23" MINIMUM LENGTH, 25T.
21	COD EF 002	2	CONNECTOR, FLEXIBLE PVC, 90 DEGREE; 1 IN
22	COD PC 016	40	CONDUIT; PVC; 1 IN DIA; SCHEDULE 40
23	COD PC 017	10	CONDUIT; FLEXIBLE PVC; 1 IN DIA
24	COD WH 002	1	WEATHERHEAD; PVC; FOR 1 IN DIA PIPE
25	GUA AN 007	6	GUARD, ANIMAL, FOR ARRESTERS
26	INS VP 001	2	INSULATOR, POST, 34.5kV
27	LOC PA 002	2	PADLOCK, BRASS
28	NUT PG 300	30	NUT, 1/4 - 20
29	SWE RC 002	1	RECLOSER, CONTROL, FOR USE WITH SWE RC 003
30	REC GU 001	6	GUARD, ANIMAL, RECLOSER TERMINAL COVER
31	REC GU 002	100	GUARD, ANIMAL, RECLOSER LINE INSULATION
32	SWE RC 003	1	RECLOSER, THREE-PHASE, WITH 6 INTERNAL VOLTAGE SENSORS
33	STP ST 001	25	STRAP, STEEL, 1 IN.
34	FUS UG 046	1	FUSE, 1-TIME, 20-AMP, 125-VOLT, FERRULE TYPE-B
35	TIE CA 002	25	TIE, CABLE, 24" LENGTH
36	WAS RD 002	30	WASHER, ROUND 1 IN. FOR 3/8 BOLT
37	WAS RD 005	17	WASHER, ROUND, 2 IN. DIA., FOR 3/4 IN. BOLT
38	WAS SF 003	4	WASHER, SQUARE, FLAT, 3 IN., FOR 3/4 IN. BOLT





## DG-TSH

### OVR-3SP THREE-PHASE RECLOSER – HORIZONTAL CONSTRUCTION

OPTIONS: TIE

BOLT PLATE: NONE

NO.	ITEM ID	QTY	DESCRIPTION
1	ANC ST 001	30	ANCHOR, STUD BOLT, 1/4 X 3/4 IN.
2	ADC MI 002	1	CEMENT; PVC PIPE
3	BOL DA 015	2	BOLT, DOUBLE ARMING, 3/4 X 14
4	BOL DA 016	5	BOLT, DOUBLE ARMING, 3/4 X 16
5	BOL MS 037	2	BOLT, MACHINE, SQUARE HEAD, 3/4X16
6	BOL MS 038	2	BOLT, MACHINE, SQUARE HEAD, 3/4X18
7	BOL TE 001	24	BOLT, TERMINAL KIT
8	CAI RH 010	30	#4 COVERED COPPER
9	CAI UF 001	40	CABLE, STREETLIGHT UF 12 CU 2/C
10	CLA AR 003	6	CLAMP, ARRESTER HOT-LINE, 336-636
11	CLA TG 001	6	CLAMP, TRANS. TANK GROUND
12	COB AA 026	90	GENERAL CODE FOR 636MCM ALUMINUM CONDUCTOR
13	COB CO 028	40	CONDUCTOR, COPPER, #4 SOFT DRAWN
14	COB TW 004	20	TIE WIRE, ALUMINUM INSULATED
15	CNN TA 004	6	CONNECTOR, TAP, 636-636
16	CNN TL 029	6	TERMINAL; COMPRESSION, 4 HOLE, 636AAC
17	CNN VG 003	8	CONNECTOR, VISE TYPE, 6-2 SOL. 10-2 SOL.
18	COD AF 010	1	1" SCHEDULE 40 PVC LB
19	FUS OH 005	1	FUSE, OVERHEAD DISTRIBUTION, 23" MINIMUM LENGTH, 25T.
20	COD EF 002	2	CONNECTOR, FLEXIBLE PVC, 90 DEGREE; 1 IN
21	COD PC 016	40	CONDUIT; PVC; 1 IN DIA; SCHEDULE 40
22	COD PC 017	10	CONDUIT; FLEXIBLE PVC; 1 IN DIA
23	COD WH 002	1	WEATHERHEAD; PVC; FOR 1 IN DIA PIPE
24	GUA AN 007	6	GUARD, ANIMAL, FOR ARRESTERS
25	INS VP 001	2	INSULATOR, POST, 34.5kV
26	LOC PA 002	2	PADLOCK, BRASS
27	NUT PG 300	30	NUT, 1/4 - 20
28	SWE RC 002	1	RECLOSER, CONTROL, FOR USE WITH SWE RC 003
29	REC GU 001	6	GUARD, ANIMAL, RECLOSER TERMINAL COVER
30	REC GU 002	100	GUARD, ANIMAL, RECLOSER LINE INSULATION
31	SWE RC 003	1	RECLOSER, THREE-PHASE, WITH 6 INTERNAL VOLTAGE SENSORS
32	STP ST 001	25	STRAP, STEEL, 1 IN.
33	FUS UG 046	1	FUSE, 1-TIME, 20-AMP, 125-VOLT, FERRULE TYPE-B
34	TIE CA 002	25	TIE, CABLE, 24" LENGTH
35	WAS RD 002	30	WASHER, ROUND 1 IN. FOR 3/8 BOLT
36	WAS RD 005	17	WASHER, ROUND, 2 IN. DIA., FOR 3/4 IN. BOLT
37	WAS SF 003	4	WASHER, SQUARE, FLAT, 3 IN., FOR 3/4 IN. BOLT

The material in plate is the same as AR-TSE, except that there is no recloser spreader bracket BKT RE 001.