

# SECONDARY

## INTRODUCTION

1. All Secondary will attach at the location shown in the box. If no location is shown, special provisions may be necessary, such as drilling an additional hole, and must be called for by the engineer.
2. Open-wire secondary shall be maintained only and should be removed if possible and replaced with multiplex cable. In some situations, such as supplying overhead power to streetlighting poles with long spans, open-wire secondary may be more practical from a design standpoint. However, consult your supervisor before plating any open-wire secondary.
3. Plate options are listed under the brief description for each construction standard and the bolt plates if available.
4. The S8 plate is to be used on angle main-line structures only. Do not use this plate on clearance poles. Instead, use the S6 plate and itemize two wedge clamps to attach the cut-in to the clearance pole.
5. When working with quadraplex, the plates S20 and S21 can be modified to include an additional connector and cover by adding a "Q" to the plate name. Example: S20Q\*2/0-1/0
6. Plate options for the S20 and S21 plates are explained as follows: The first number after the asterisk is the secondary buss size, and the second number is the service drop size.
7. The S20 plate has been copied into the S20ES (Existing Service) and is used for all existing (and new) services that require side-by connectors. The S20NS (New Service) is for all new services fed from multi-tap transformer connectors. For S20NS, only the service drop size is required because only the wedge clamp is needed. These two new designations will force the plating engineer to choose existing or new service so that the appropriate connectors will be included with the job. Examples of the new plates are listed below.

S20ES\*1/0-1/0 for existing services that require connectors

item	#	description
I.CLASR003	1	CLAMP, STRAIN RELIEF WEDGE MESSENGER, SIZE: #6 - 2/0
I.CNNCP002	1	CONNECTOR, #2, 6-2 MAIN, 2-1/0 TAP, COMPRESSION PARALLEL TAP, ALUMINUM
I.CNNCP004	2	CONNECTOR, #4, 1/0-2/0 MAIN, 1/0-3/0 TAP COMPRESSION PARALLEL TAP, ALUMINUM
I.COVC002	2	COVER, "D" DIE, INSULATING, 2-1/2"

S20NS\*1/0 for all new services fed from multi-taps

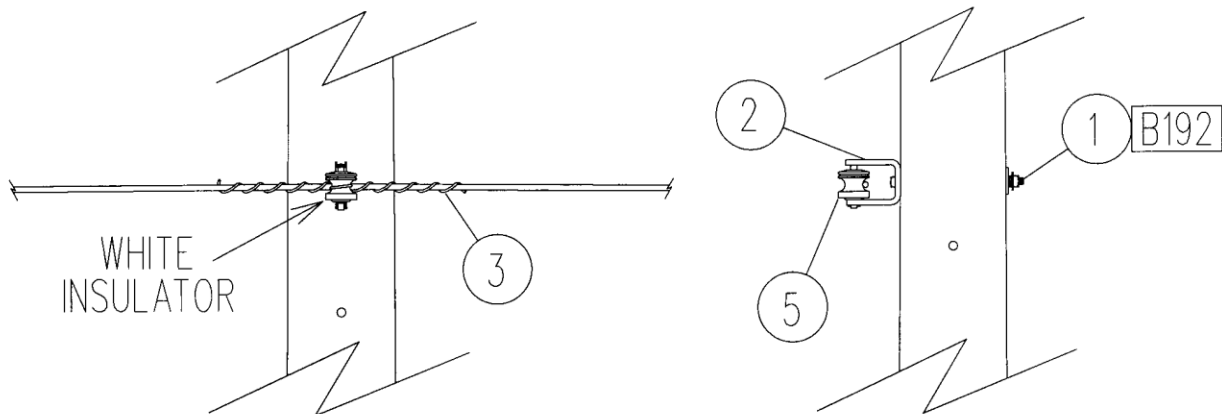
item	#	description
I.CLASR003	1	CLAMP, STRAIN RELIEF WEDGE MESSENGER, SIZE: #6 - 2/0

# S1

## OPEN WIRE SPOOL – NEUTRAL

OPTIONS: NONE

BOLT PLATE: NONE

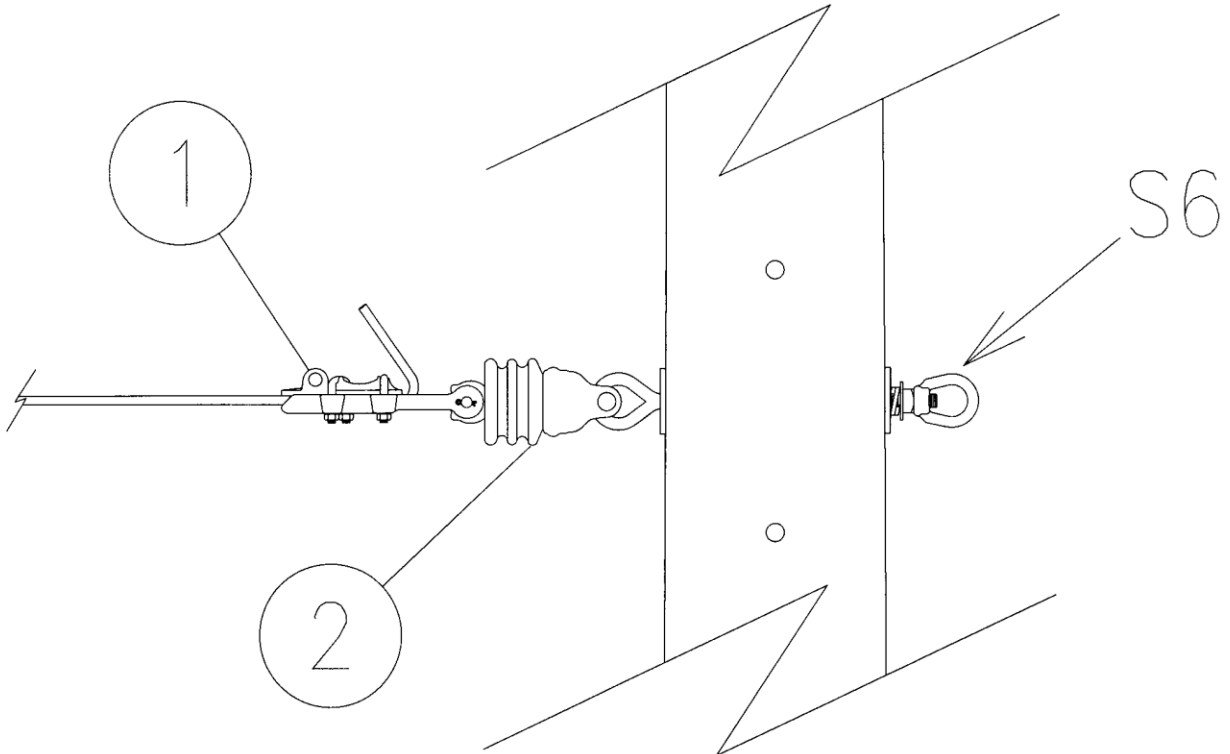


NO.	ITEM ID	QTY	DESCRIPTION
1	BOL MS 020	1	BOLT, MACHINE, SQUARE HEAD, 5/8X14
2	CLE IN 001	1	CLEVIS, SECONDARY FORK
3	COB TW 006	1	CONDUCTOR, EC GRADE #2AAC
4	CNN VG 003	1	CONNECTOR, VISE TYPE, 6-2 SOL. 10-2 SOL.
5	INS ST 002	1	INSULATOR, SPOOL, WHITE
6	WAS RD 004	1	WASHER, ROUND, 1-3/4 IN. DIA., FOR 5/8 IN. DIA. BOLT
7	WAS SF 003	1	WASHER, SQUARE, FLAT, 3 IN., FOR 3/4 OR 5/8 IN. DIA. BOLT
8	WAS SP 002	1	WASHER, SPRING, DOUBLE HELIX, FOR 3/4 IN. DIA. BOLT

**S4****SECONDARY DEADEND**

OPTIONS: 6CU, 4CU, 2CU, 1/0CU, 2/0CU, 4/0CU, 2, 1/0, 2/0, 3/0, 4/0

BOLT PLATE: NONE

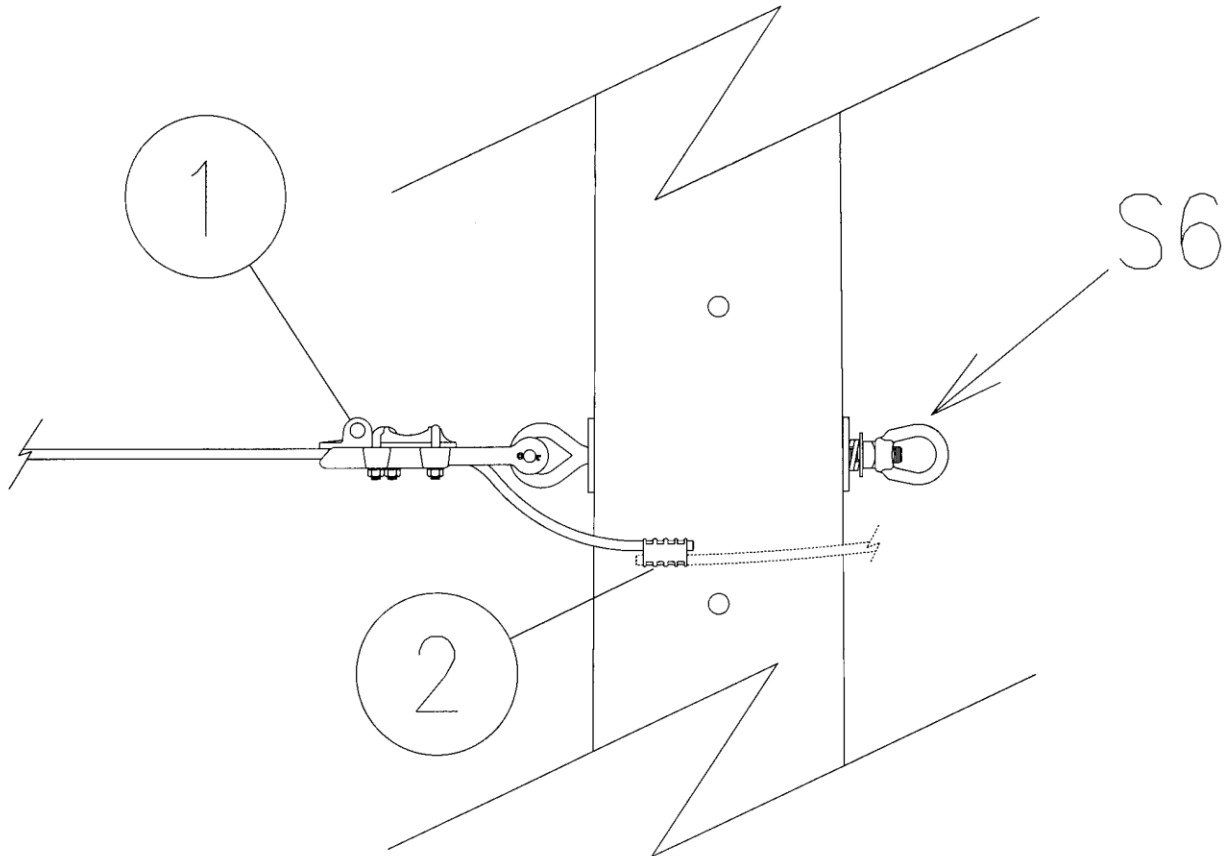


NO.	ITEM ID	QTY	DESCRIPTION
1	CLA SS ***	1	GENERAL CODE FOR STRAIGHT STRAIN CLAMP
2	INS SU 002	1	INSULATOR, SUSPENSION, 4 IN., 10,000 LB

**S5****NEUTRAL DEADEND**

OPTIONS: 6CU, 4CU, 2CU, 1/0CU, 2/0CU, 4/0CU, 6, 4, 2, 1/0, 2/0, 3/0, 4/0, 636

BOLT PLATE: NONE

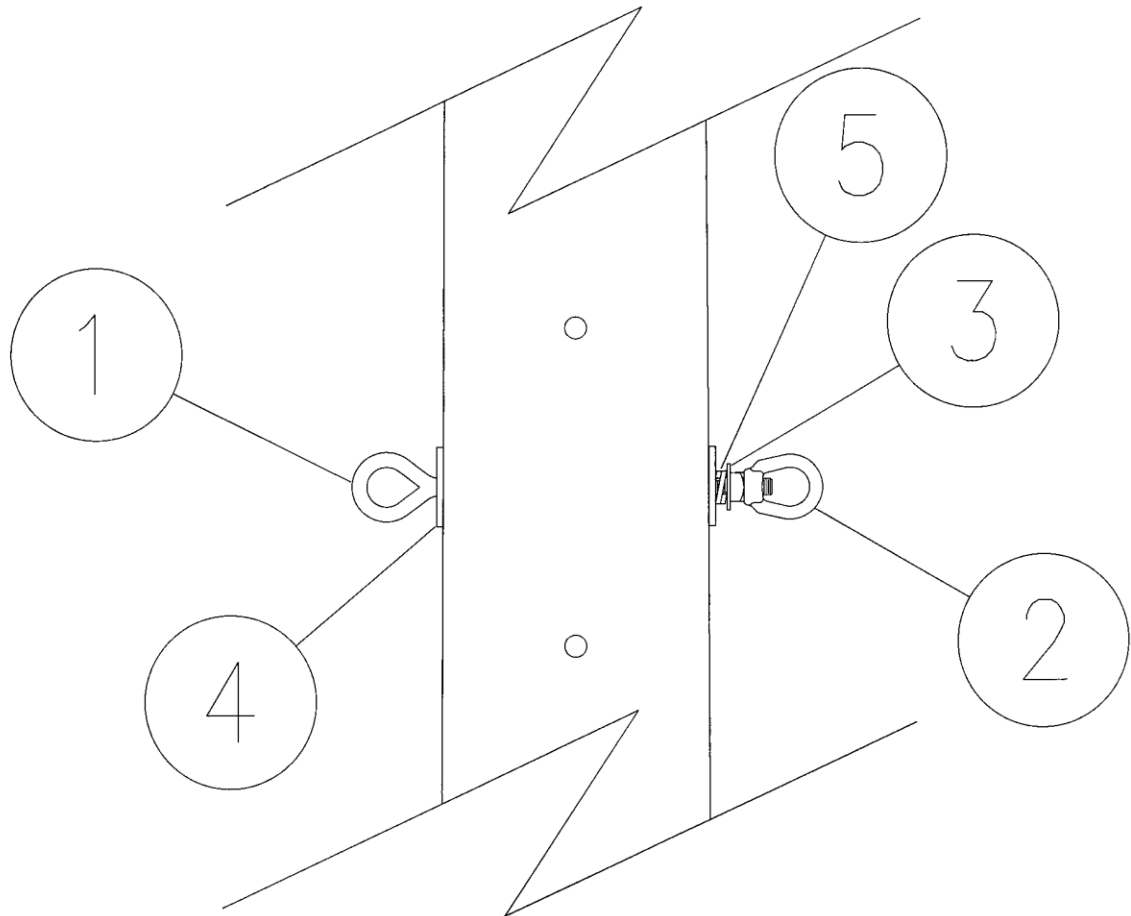


NO.	ITEM ID	QTY	DESCRIPTION
1	CLA SS ***	1	GENERAL CODE FOR STRAIGHT STRAIN CLAMP
2	CNN ** ***	1	GENERAL CODE FOR CONNECTOR

**S6****DOUBLE EYEBOLT**

OPTIONS: NONE

BOLT PLATE: NONE

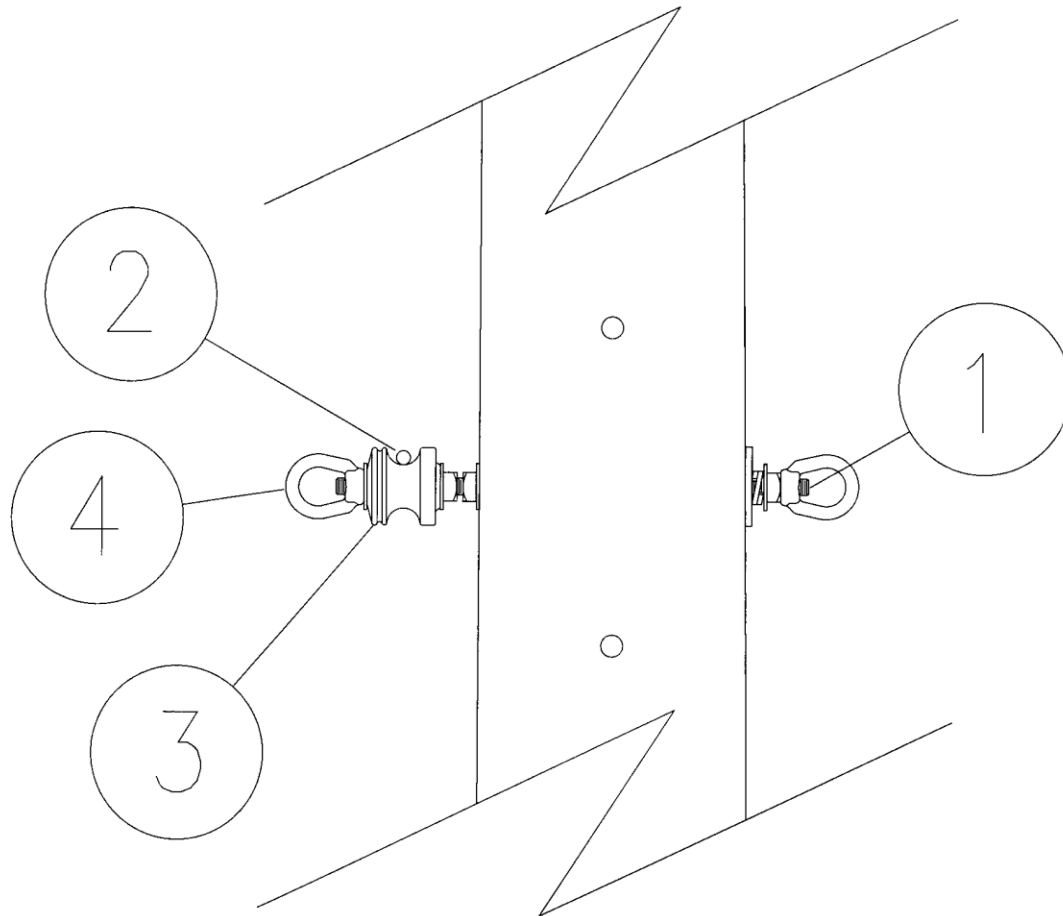


NO.	ITEM ID	QTY	DESCRIPTION
1	BOL EY 003	1	BOLT, EYE, 5/8X12
2	NUT EY 002	1	NUT, EYE, 5/8
3	WAS RD 004	1	WASHER, ROUND, 1-3/4 IN. DIA., FOR 5/8 IN. DIA. BOLT
4	WAS SF 003	2	WASHER, SQUARE, FLAT, 3 IN., FOR 3/4 OR 5/8 IN. DIA. BOLT
5	WAS SP 002	1	WASHER, SPRING, DOUBLE HELIX, FOR 3/4 IN. DIA. BOLT

**S7****TANGENT ASSEMBLY**

OPTIONS: NONE

BOLT PLATE: NONE



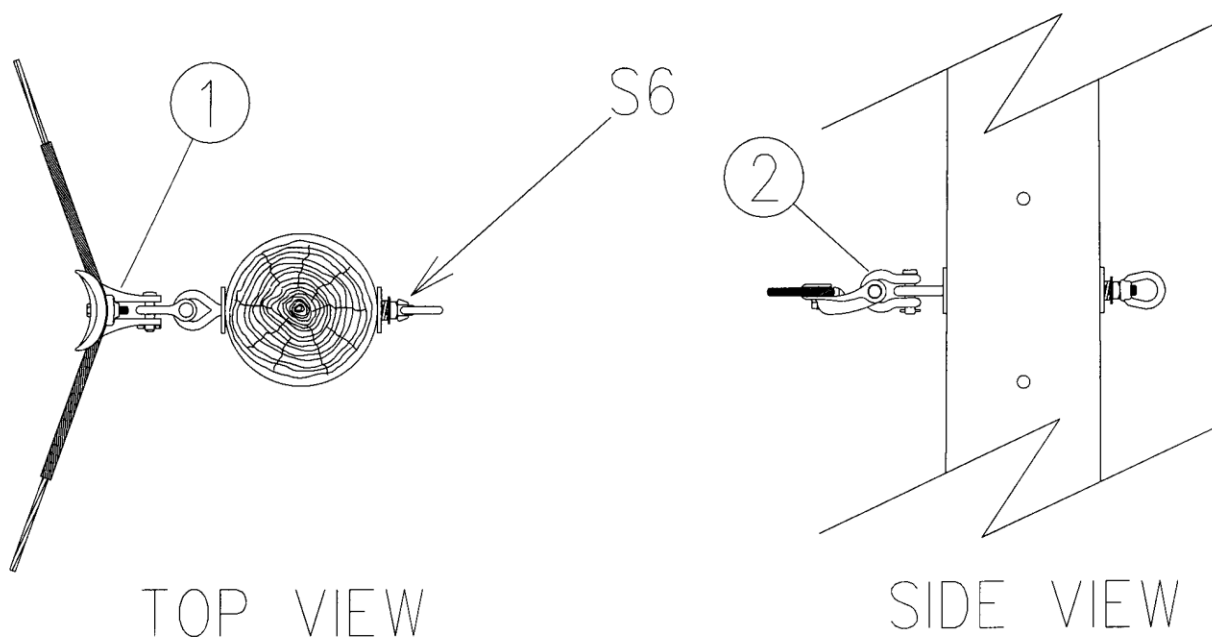
NO.	ITEM ID	QTY	DESCRIPTION
1	BOL DA 004	1	BOLT, DOUBLE ARMING, 5/8X18
2	COB TW 006	1	CONDUCTOR, EC GRADE #2AAC
3	INS ST 002	1	INSULATOR, SPOOL, WHITE
4	NUT EY 002	2	NUT, EYE, 5/8
5	WAS RD 004	3	WASHER, ROUND, 1-3/4 IN. DIA., FOR 5/8 IN. DIA. BOLT
6	WAS SF 003	2	WASHER, SQUARE, FLAT, 3 IN., FOR 3/4 OR 5/8 IN. DIA. BOLT
7	WAS SP 002	1	WASHER, SPRING, DOUBLE HELIX, FOR 3/4 IN. DIA. BOLT

# S8

## FLYING ANGLE ASSEMBLY

OPTIONS: 2, 1/0, 2/0, 3/0, 4/0

BOLT PLATE: NONE



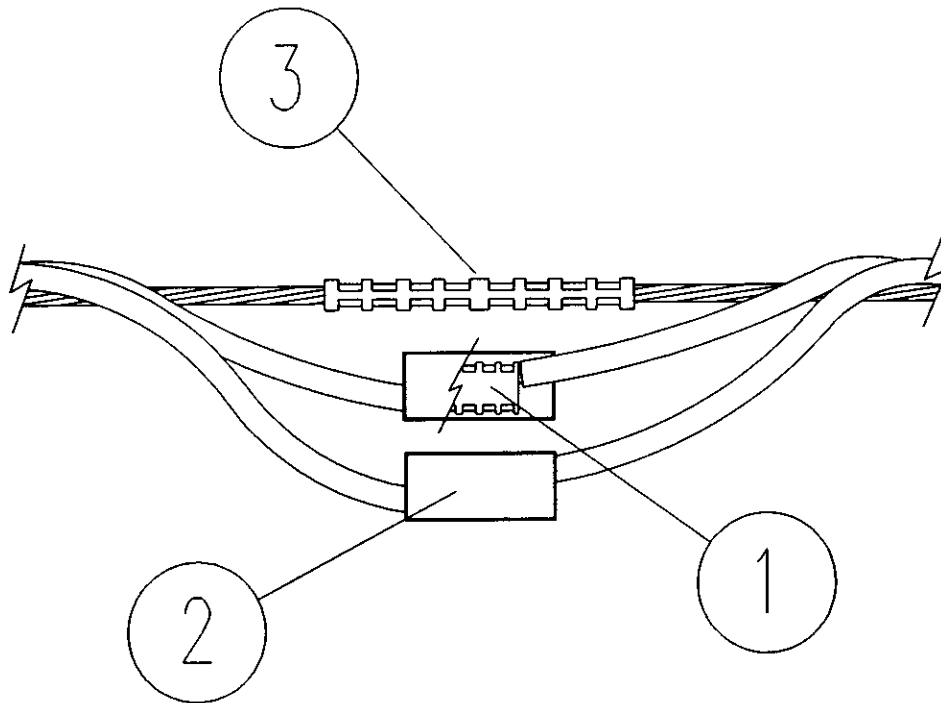
NO.	ITEM ID	QTY	DESCRIPTION
1	CLA ** ***	1	GENERAL CODE FOR SUSPENSION OR ANGLE CLAMP
2	SHA AN 002	1	SHACKLE, ANCHOR, 20,000 LBS.

## S9

### SECONDARY SPLICE

OPTIONS: 6, 4, 2, 1/0, 2/0, 4/0, 2/0Q, 4/0Q

BOLT PLATE: NONE

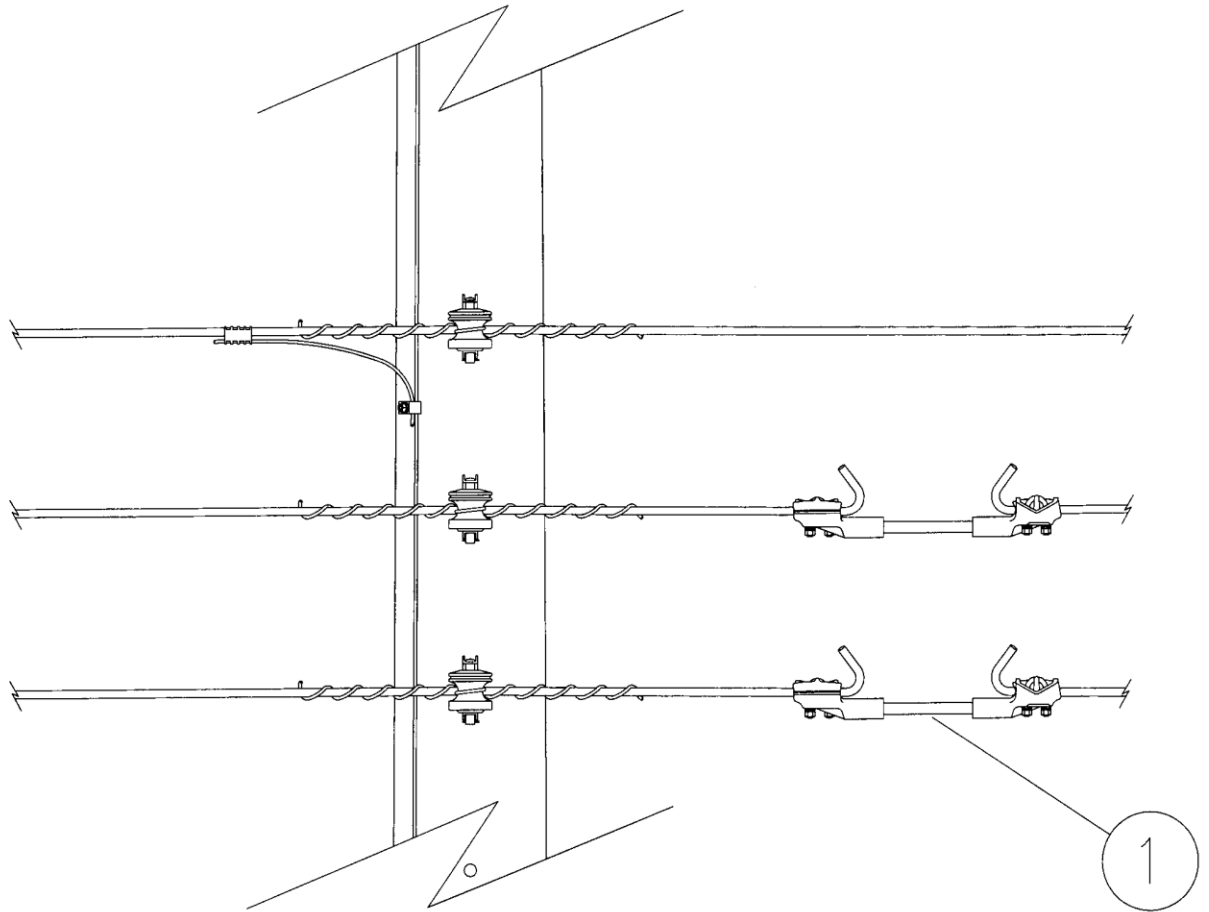


NO.	ITEM ID	QTY	DESCRIPTION
1	CNN CP ***	2	GENERAL CODE FOR AL. COMP. SIDE-BY CONNECTOR
2	COV IC ***	2	GENERAL CODE FOR CONNECTOR COVER
3	SLE ** ***	1	GENERAL CODE FOR SLEEVE
	OR		
1	CNN CP ***	3	GENERAL CODE FOR AL. COMP. SIDE-BY CONNECTOR
2	COV IC ***	3	GENERAL CODE FOR CONNECTOR COVER
3	SLE ** ***	1	GENERAL CODE FOR SLEEVE

**S10****SECONDARY BREAK**

OPTIONS: NONE

BOLT PLATE: NONE

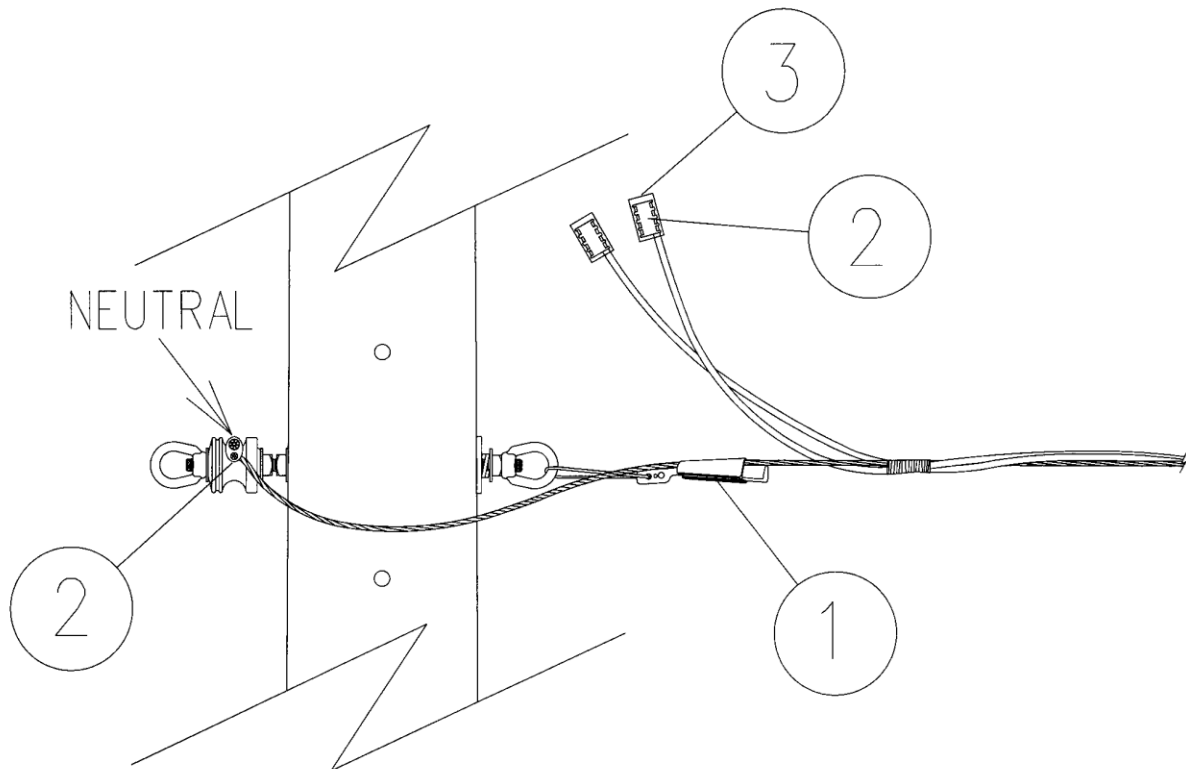


NO.	ITEM ID	QTY	DESCRIPTION
1	BRE SE 002	1	BREAKER, SECONDARY, #2-336 KCM

**S20****SECONDARY DEADEND CONNECTION AT POLE  
AND TRANSFORMER CONNECTION**

OPTIONS: 6 – 6, 4 – 4, 4 – 6, 2 – 6, 2 – 4, 2 – 2, 1/0 – 6, 1/0 – 4, 1/0 – 2, 1/0 – 1/0, 2/0 – 6,  
2/0 – 4, 2/0 – 2, 2/0 – 1/0, 2/0 – 2/0, 4/0 – 6, 4/0 – 4, 4/0 – 2, 4/0 – 1/0, 4/0 – 2/0,  
4/0 – 4/0, 500 – 6, 500 – 2, 500 – 1/0, 500 – 2/0, 500 – 4/0

BOLT PLATE: NONE

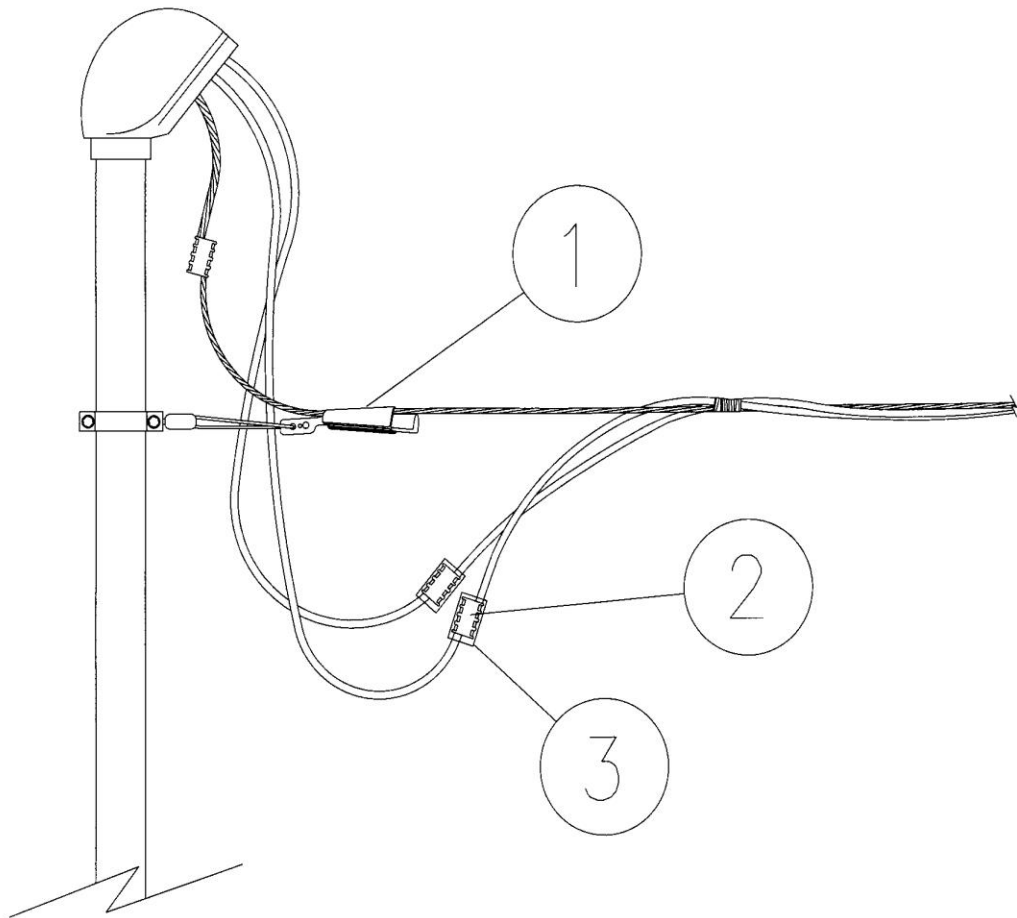


NO.	ITEM ID	QTY	DESCRIPTION
1	CLA SR ***	1	GENERAL CODE FOR STRAIN RELIEF WEDGE CLAMP
2	CNN CP ***	3	GENERAL CODE FOR AL. COMP. SIDE-BY CONNECTOR
3	COV IC ***	2	GENERAL CODE FOR CONNECTOR COVER

**S21****SECONDARY CONNECTION AT HOUSE**

OPTIONS: 6 – 6, 4 – 4, 4 – 6, 2 – 6, 2 – 4, 2 – 2, 1/0 – 6, 1/0 – 4, 1/0 – 2, 1/0 – 1/0, 2/0 – 6,  
2/0 – 4, 2/0 – 2, 2/0 – 1/0, 2/0 – 2/0, 4/0 – 6, 4/0 – 4, 4/0 – 2, 4/0 – 1/0, 4/0 – 2/0,  
4/0 – 4/0

BOLT PLATE: NONE



NO.	ITEM ID	QTY	DESCRIPTION
1	CLA SR ***	1	GENERAL CODE FOR STRAIN RELIEF WEDGE CLAMP
2	CNN CP ***	3	GENERAL CODE FOR AL. COMP. SIDE-BY CONNECTOR

