

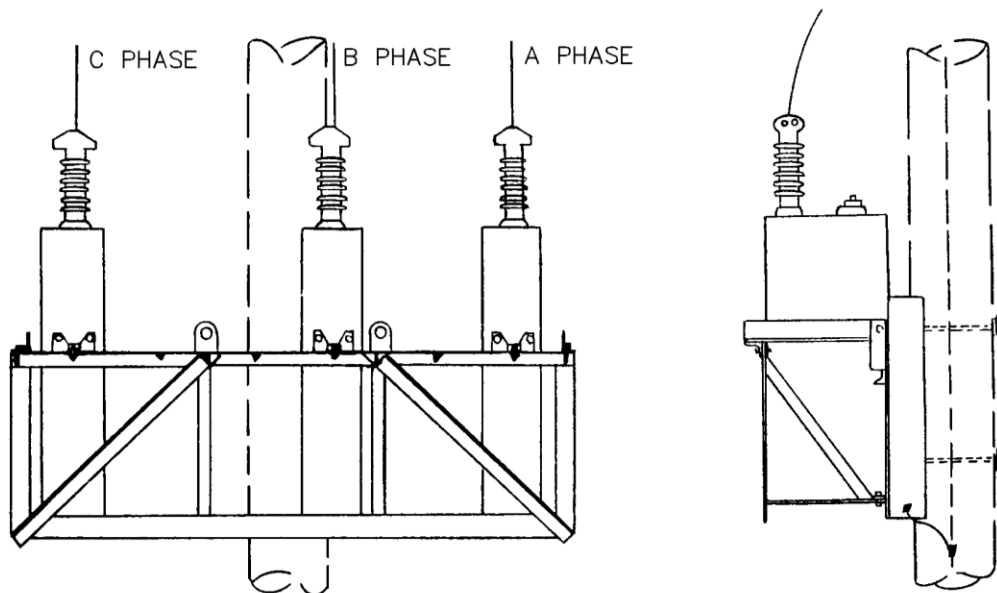
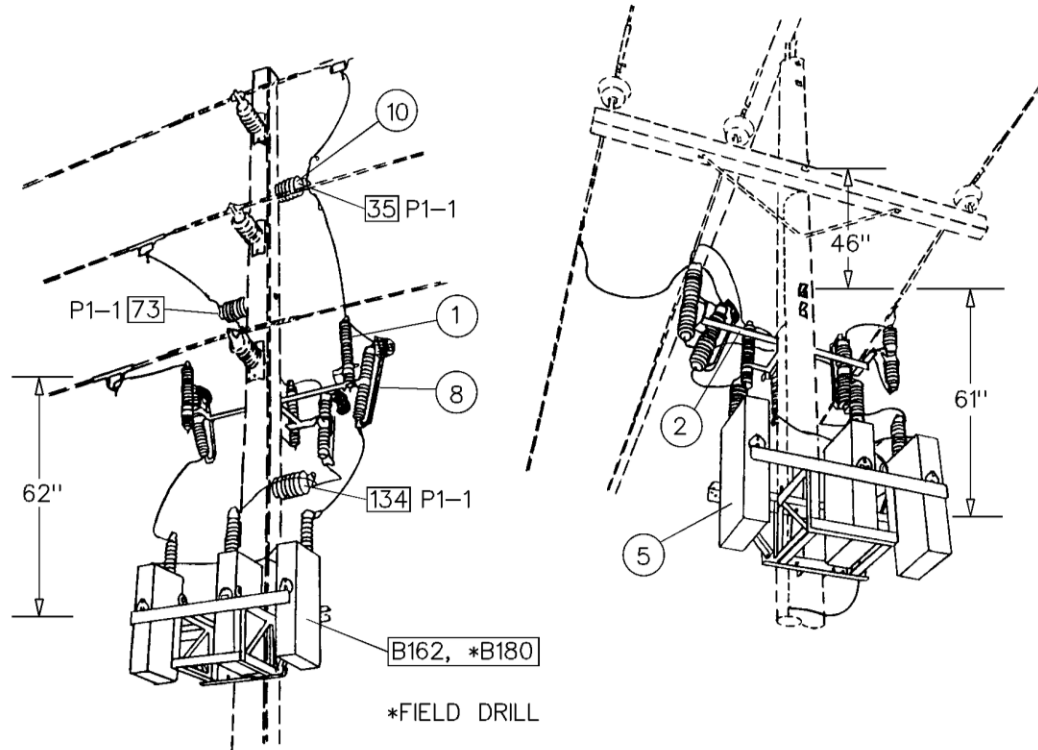
REGULATORS & CAPACITORS

INTRODUCTION

1. Capacitors come in several standard sizes. All banks used on the 26.4kV distribution system are constructed with different quantities of individual 200kVAR capacitors. For example, a 600kVAR bank is made up of three capacitors and a 1200kVAR bank is made up of six capacitors. Capacitor banks used on the 4kV distribution system may include either 50kVAR, 100kVAR, or 150kVAR capacitors depending on the size of the bank. However, all units that make up the bank will be the same size (i.e. all 50's, 100's, or 150's).
2. Jumper pins, where required, are included with each plate.
3. The cutout and arrester bracket will always mount behind the lowest phase regardless if multiple phases are present. For horizontal construction, the bracket will always be 40 inches below the crossarm attachment bolt.
4. Note: Install capacitor banks in a location that has access on both the field and street-side of the pole. Do not install banks where there is heavy tree growth, ditches, or steep slopes that would impede the access to the structure by a 35 foot trouble truck.
5. The plate suffixes F, S, and SN stand for "Fixed", "Switched", and "Switched Neutral".
6. These drawings and item listings have not been updated to include the animal guarding system, but the proper material is included in the plating.
7. Although the plates are not shown, the fiberglass construction plates are available. Example: YDC-6SF.

YDC-6S

600KVAR BANK – 26.4KV SYSTEM – SWITCHED

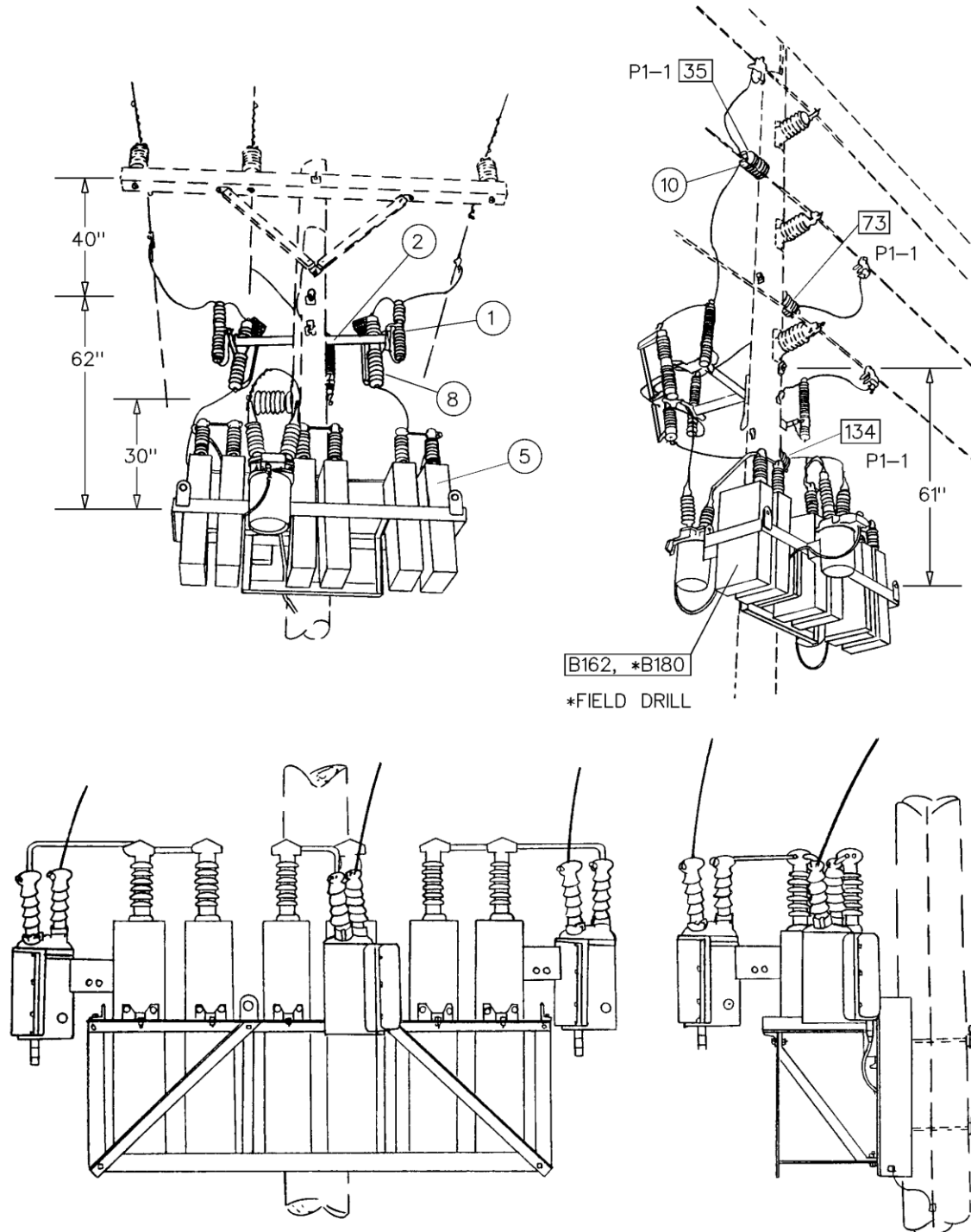


YDC-6S**600KVAR BANK – 26.4KV SYSTEM – SWITCHED****OPTIONS: NONE****BOLT PLATE: NONE**

NO.	ITEM ID	QTY	DESCRIPTION
1	ARR LI 003	3	ARRESTER, LIGHTNING, POLYMER, 21kV
2	BKT AC 002	1	BRACKET, ARRESTER/CUTOUT, TRI-MOUNT
3	BOL MS 036	4	BOLT, MACHINE, SQUARE HEAD, 3/4X14
4	BOL DA 015	3	BOLT, DOUBLE ARMING, 3/4X14
5	CAP BA 002	1	CAPACITOR BANK, 600kVAR, FIXED, FOR USE ON 26.4kV
6	CNN VG 003	3	CONNECTOR, VISE TYPE, 6-2 SOL. 10-2 SOL.
7	COB CO 028	30	CONDUCTOR, BARE COPPER, #4 SOFT DRAWN
8	CUT OT 004	3	CUTOUT, FUSED, 150kV BIL, 100 AMP, 27kV
9	FUS OH 014	3	FUSE LINK, TYPE K, 15 AMP
10	INS VP 001	3	INSULATOR, VERTICAL POST, 34.5kV
11	WAS RD 005	5	WASHER, ROUND, 2 IN. DIA., FOR 3/4 IN. BOLT
12	WAS SF 003	8	WASHER, SQUARE, FLAT, 3 IN., FOR 3/4 IN. BOLT
13	WAS SP 002	5	WASHER, SPRING, DOUBLE HELIX, FOR 3/4 IN. BOLT

YDC-12S

1200KVAR BANK – 26.4KV SYSTEM – SWITCHED



YDC-12S

1200KVAR BANK – 26.4KV SYSTEM – SWITCHED

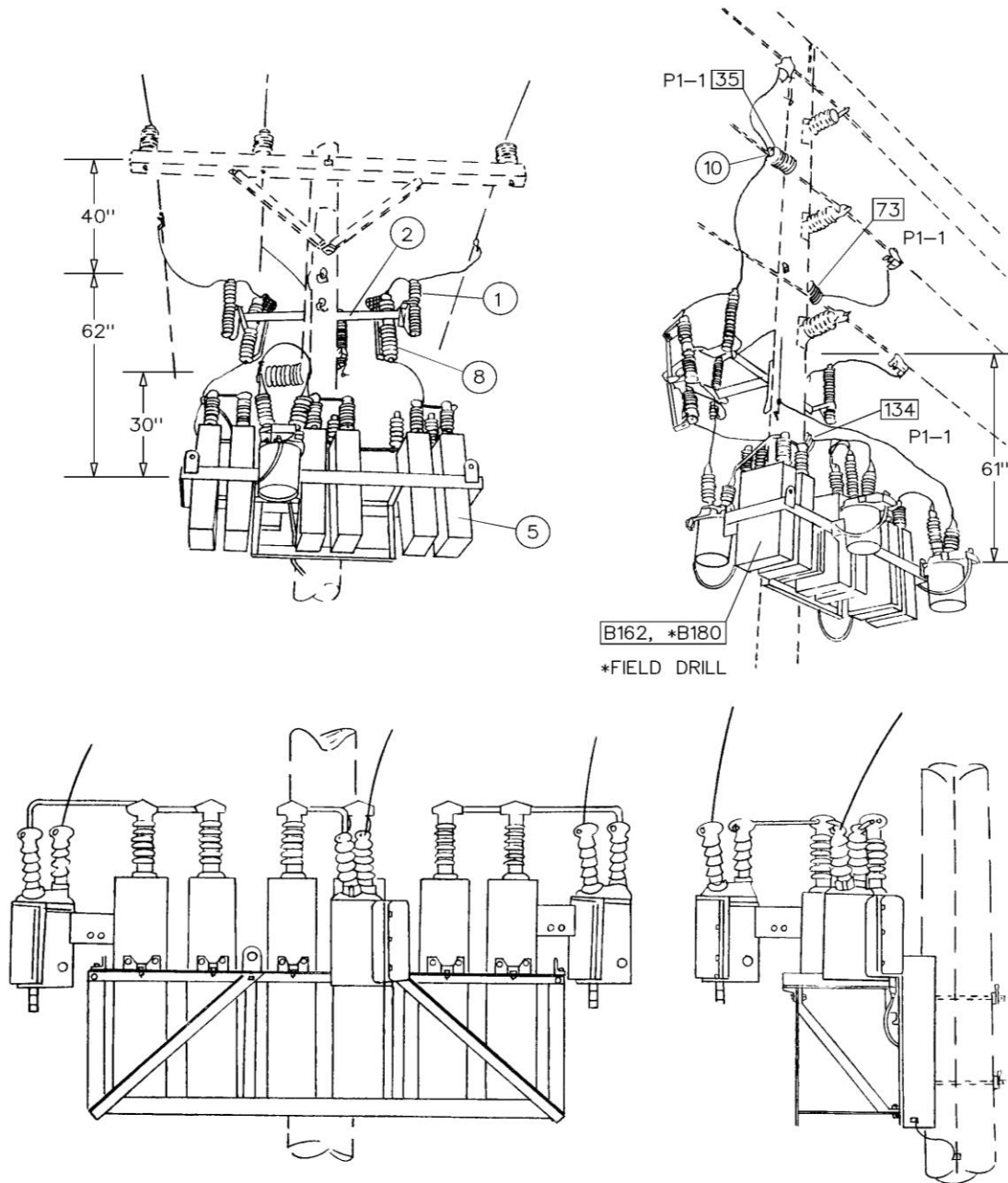
OPTIONS: NONE

BOLT PLATE: NONE

NO.	ITEM ID	QTY	DESCRIPTION
1	ARR LI 003	3	ARRESTER, LIGHTNING, POLYMER, 21kV
2	BKT AC 002	1	BRACKET, ARRESTER/CUTOUT, TRI-MOUNT
3	BOL MS 036	4	BOLT, MACHINE, SQUARE HEAD, 3/4X14
4	BOL DA 015	3	BOLT, DOUBLE ARMING, 3/4X14
5	CAP BA 001	1	CAPACITOR BANK, 1200kVAR, SWITCHED, FOR USE ON 26.4kV
6	CNN VG 003	3	CONNECTOR, VISE TYPE, 6-2 SOL. 10-2 SOL.
7	COB CO 028	30	CONDUCTOR, BARE COPPER, #4 SOFT DRAWN
8	CUT OT 004	3	CUTOUT, FUSED, 150kV BIL, 100 AMP, 27kV
9	FUS OH 016	3	FUSE LINK, TYPE K, 25 AMP
10	INS VP 001	3	INSULATOR, VERTICAL POST, 34.5kV
11	WAS RD 005	5	WASHER, ROUND, 2 IN. DIA., FOR 3/4 IN. BOLT
12	WAS SF 003	8	WASHER, SQUARE, FLAT, 3 IN., FOR 3/4 IN. BOLT
13	WAS SP 002	5	WASHER, SPRING, DOUBLE HELIX, FOR 3/4 IN. BOLT

YDC-12SN

1200KVAR BANK – 26.4KV SYSTEM – SWITCHED NEUTRAL

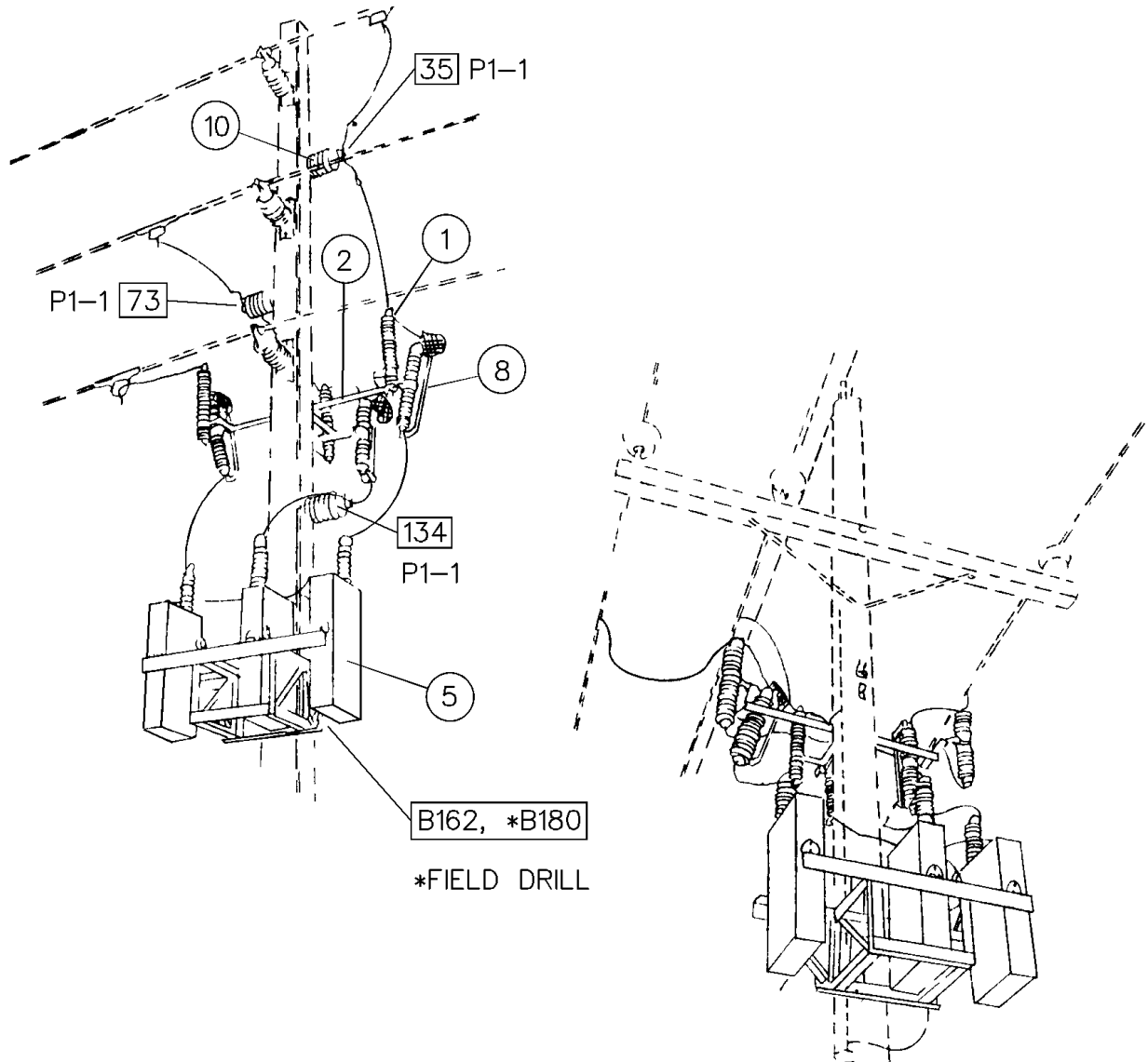


YDC-12SN**1200KVAR BANK – 26.4KV SYSTEM – SWITCHED NEUTRAL****OPTIONS: NONE****BOLT PLATE: NONE**

NO.	ITEM ID	QTY	DESCRIPTION
1	ARR LI 003	3	ARRESTER, LIGHTNING, POLYMER, 21kV
2	BKT AC 002	1	BRACKET, ARRESTER/CUTOUT, TRI-MOUNT
3	BOL MS 036	4	BOLT, MACHINE, SQUARE HEAD, 3/4X14
4	BOL DA 015	3	BOLT, DOUBLE ARMING, 3/4X14
5	CAP BA 003	1	CAPACITOR BANK, 1200kVAR, SWITCHED NEUTRAL, FOR USE ON 26.4kV
6	CNN VG 003	3	CONNECTOR, VISE TYPE, 6-2 SOL. 10-2 SOL.
7	COB CO 028	30	CONDUCTOR, BARE COPPER, #4 SOFT DRAWN
8	CUT OT 004	3	CUTOUT, FUSED, 150kV BIL, 100 AMP, 27kV
9	FUS OH 016	3	FUSE LINK, TYPE K, 25 AMP
10	INS VP 001	3	INSULATOR, VERTICAL POST, 34.5kV
11	WAS RD 005	5	WASHER, ROUND, 2 IN. DIA., FOR 3/4 IN. BOLT
12	WAS SF 003	8	WASHER, SQUARE, FLAT, 3 IN., FOR 3/4 IN. BOLT
13	WAS SP 002	5	WASHER, SPRING, DOUBLE HELIX, FOR 3/4 IN. BOLT

YRC-1.5

150KVAR BANK – 4KV SYSTEM



YRC-1.5

150KVAR BANK – 4KV SYSTEM

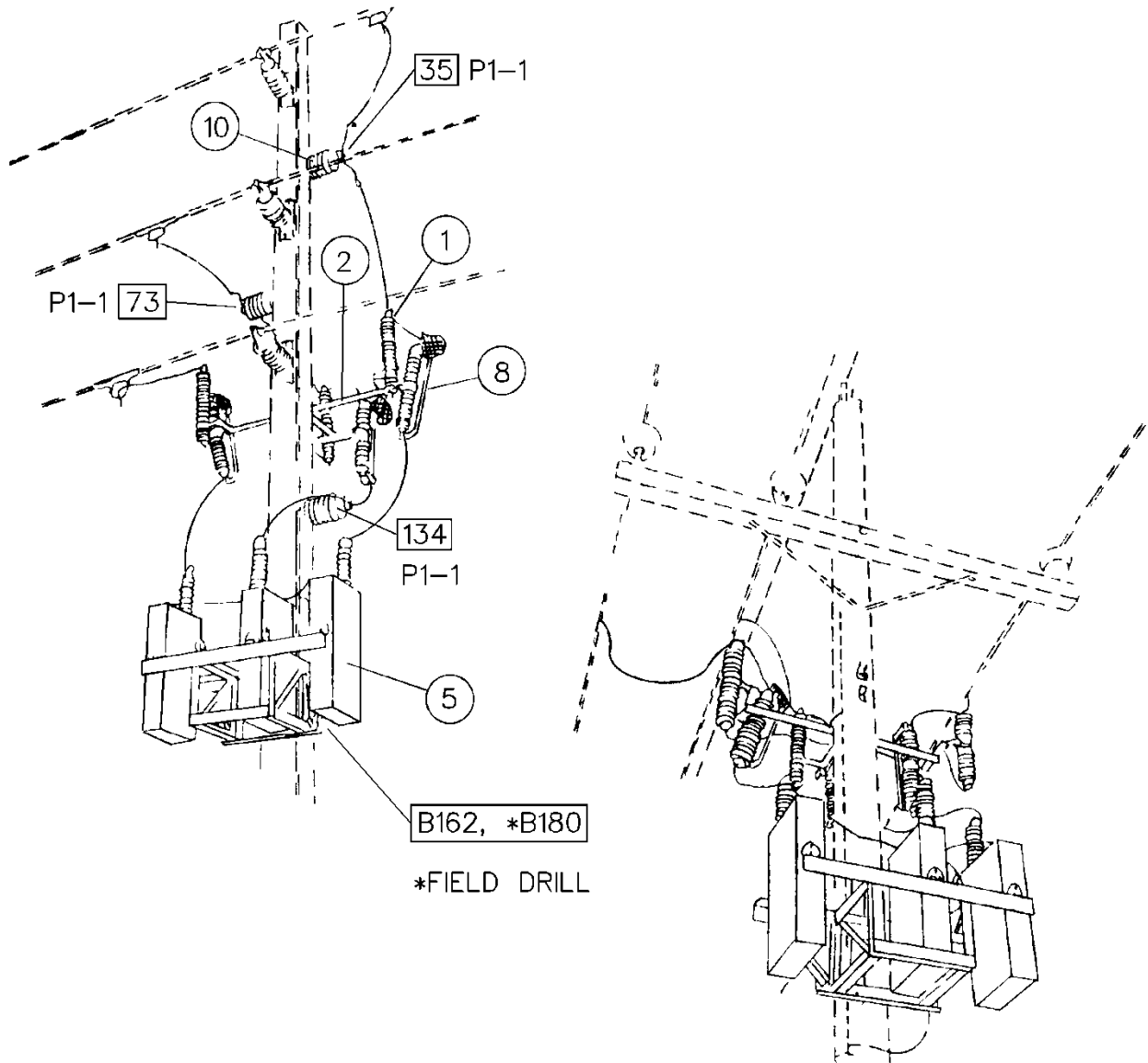
OPTIONS: F, S, SN

BOLT PLATE: NONE

NO.	ITEM ID	QTY	DESCRIPTION
1	ARR LI 001	3	ARRESTER, LIGHTNING, POLYMER, 3kV
2	BKT AC 002	1	BRACKET, ARRESTER/CUTOUT, TRI-MOUNT
3	BOL MS 036	4	BOLT, MACHINE, SQUARE HEAD, 3/4X14
4	BOL DA 015	3	BOLT, DOUBLE ARMING, 3/4X14
5	CAP BA ***	1	GENERAL CODE FOR 4kV CAPACITOR BANK
6	CNN VG 003	3	CONNECTOR, VISE TYPE, 6-2 SOL. 10-2 SOL.
7	COB CO 028	50	CONDUCTOR, BARE COPPER, #4 SOFT DRAWN
8	CUT OT 004	3	CUTOUT, FUSED, 125kV BIL, 100 AMP, 27kV
9	FUS OH ***	3	GENERAL CODE FOR K-LINK FUSE
10	INS VP 001	3	INSULATOR, VERTICAL POST, 34.5kV
11	WAS RD 005	5	WASHER, ROUND, 2 IN. DIA., FOR 3/4 IN. BOLT
12	WAS SF 003	8	WASHER, SQUARE, FLAT, 3 IN., FOR 3/4 IN. BOLT
13	WAS SP 002	5	WASHER, SPRING, DOUBLE HELIX, FOR 3/4 IN. BOLT

YRC-3

300KVAR BANK – 4KV SYSTEM

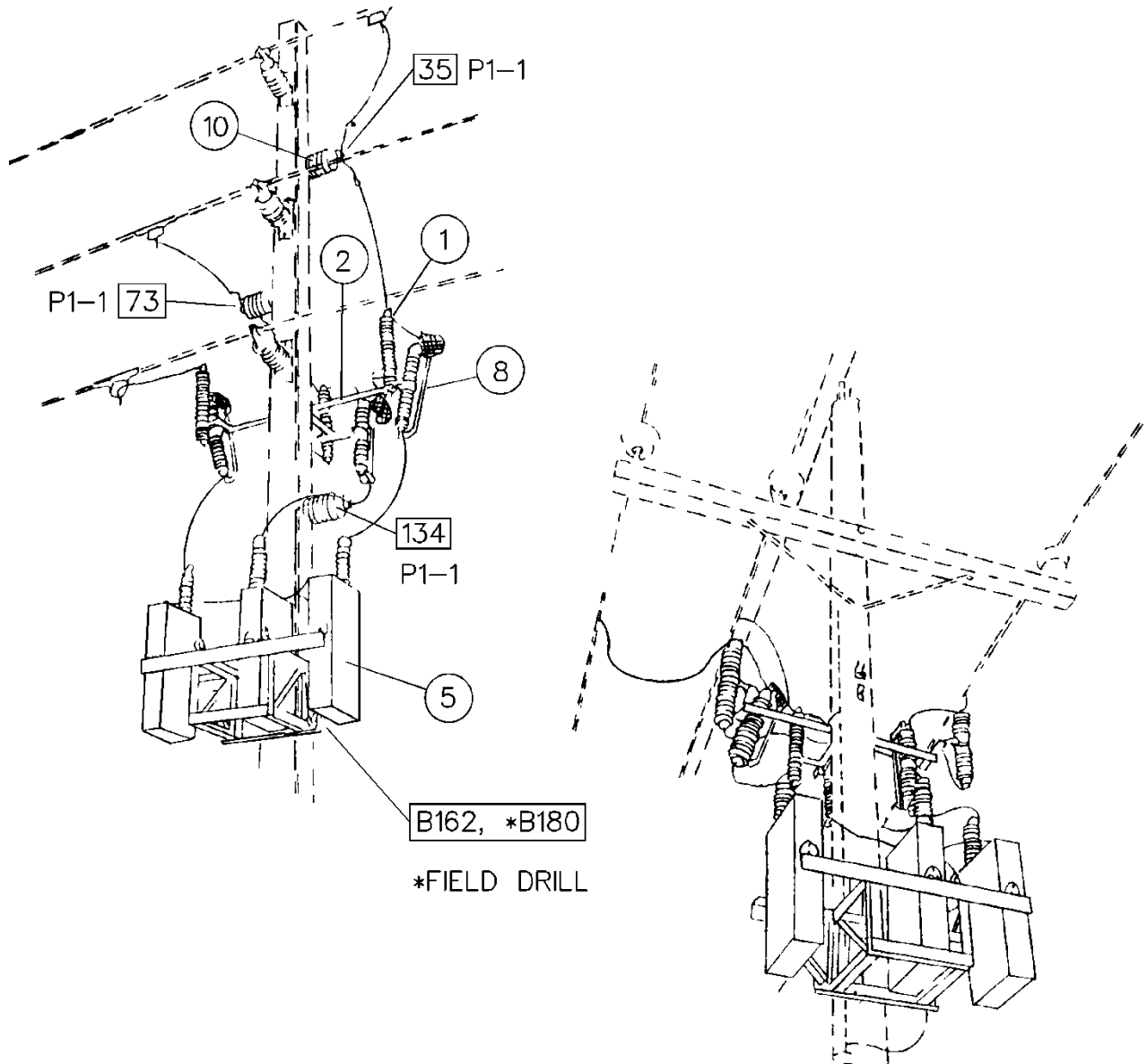


YRC-3**300KVAR BANK – 4KV SYSTEM****OPTIONS: F, S, SN****BOLT PLATE: NONE**

NO.	ITEM ID	QTY	DESCRIPTION
1	ARR LI 001	3	ARRESTER, LIGHTNING, POLYMER, 3kV
2	BKT AC 002	1	BRACKET, ARRESTER/CUTOUT, TRI-MOUNT
3	BOL MS 036	4	BOLT, MACHINE, SQUARE HEAD, 3/4X14
4	BOL DA 015	3	BOLT, DOUBLE ARMING, 3/4X14
5	CAP BA ***	1	GENERAL CODE FOR 4kV CAPACITOR BANK
6	CNN VG 003	3	CONNECTOR, VISE TYPE, 6-2 SOL. 10-2 SOL.
7	COB CO 028	50	CONDUCTOR, BARE COPPER, #4 SOFT DRAWN
8	CUT OT X01	3	CUTOUT, FUSED, 125kV BIL, 100 AMP, 27kV
9	FUS OH ***	3	GENERAL CODE FOR K-LINK FUSE
10	INS VP 001	3	INSULATOR, VERTICAL POST, 34.5kV
11	WAS RD 005	5	WASHER, ROUND, 2 IN. DIA., FOR 3/4 IN. BOLT
12	WAS SF 003	8	WASHER, SQUARE, FLAT, 3 IN., FOR 3/4 IN. BOLT
13	WAS SP 002	5	WASHER, SPRING, DOUBLE HELIX, FOR 3/4 IN. BOLT

YRC-6

600KVAR BANK – 4KV SYSTEM



YRC-6

600KVAR BANK – 4KV SYSTEM

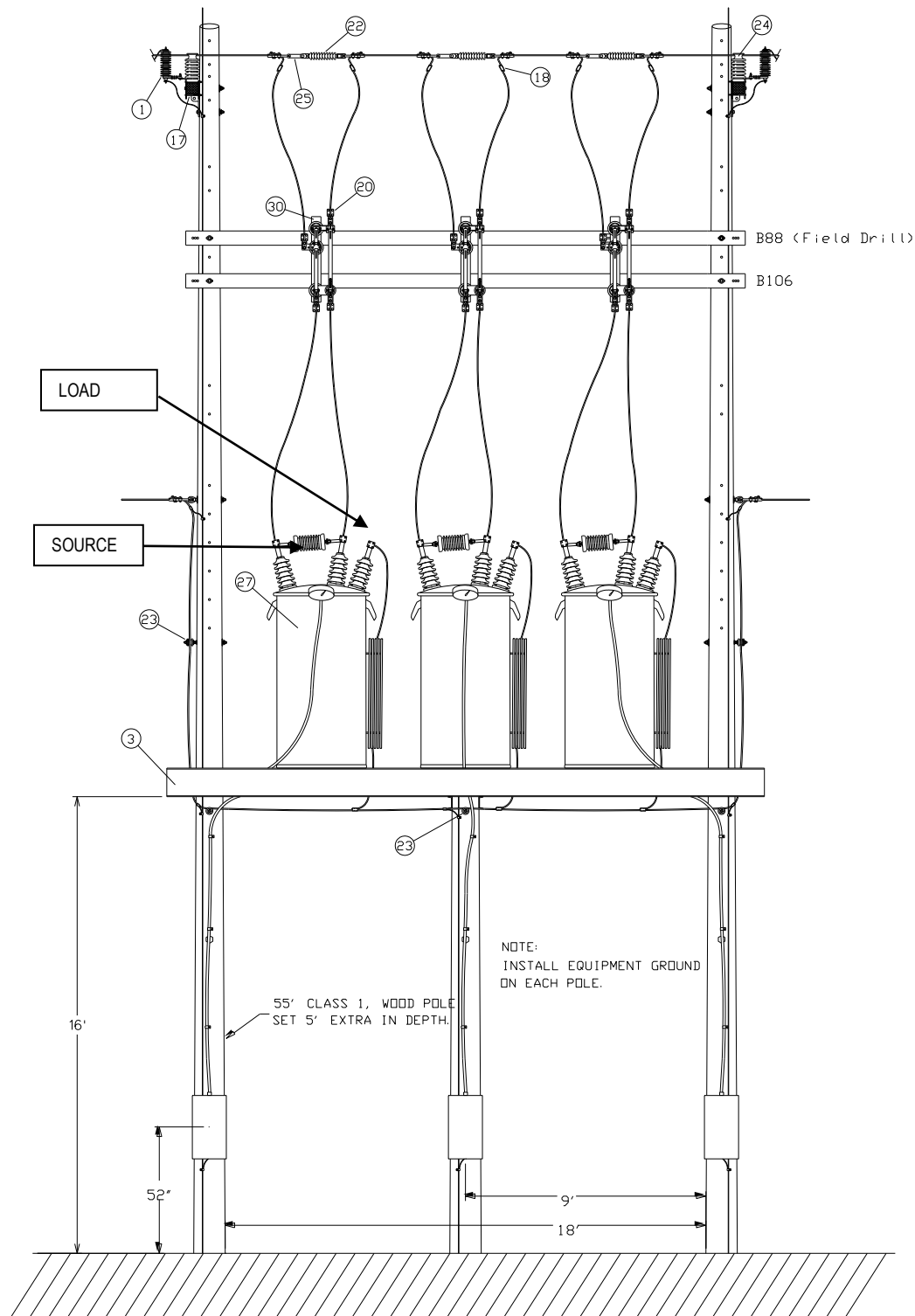
OPTIONS: F, S, SN

BOLT PLATE: NONE

NO.	ITEM ID	QTY	DESCRIPTION
1	ARR LI 001	3	ARRESTER, LIGHTNING, POLYMER, 3kV
2	BKT AC 002	1	BRACKET, ARRESTER/CUTOUT, TRI-MOUNT
3	BOL MS 036	4	BOLT, MACHINE, SQUARE HEAD, 3/4X14
4	BOL DA 015	3	BOLT, DOUBLE ARMING, 3/4X14
5	CAP BA ***	1	GENERAL CODE FOR 4kV CAPACITOR BANK
6	CNN VG 003	3	CONNECTOR, VISE TYPE, 6-2 SOL. 10-2 SOL.
7	COB CO 028	50	CONDUCTOR, BARE COPPER, #4 SOFT DRAWN
8	CUT OT X01	3	CUTOUT, FUSED, 125kV BIL, 100 AMP, 27kV
9	FUS OH ***	3	GENERAL CODE FOR K-LINK FUSE
10	INS VP 001	3	INSULATOR, VERTICAL POST, 34.5kV
11	WAS RD 005	5	WASHER, ROUND, 2 IN. DIA., FOR 3/4 IN. BOLT
12	WAS SF 003	8	WASHER, SQUARE, FLAT, 3 IN., FOR 3/4 IN. BOLT
13	WAS SP 002	5	WASHER, SPRING, DOUBLE HELIX, FOR 3/4 IN. BOLT

REG2

200 AMP VOLTAGE REGULATOR – 26.4KV SYSTEM



REG2

200 AMP VOLTAGE REGULATOR – 26.4KV SYSTEM

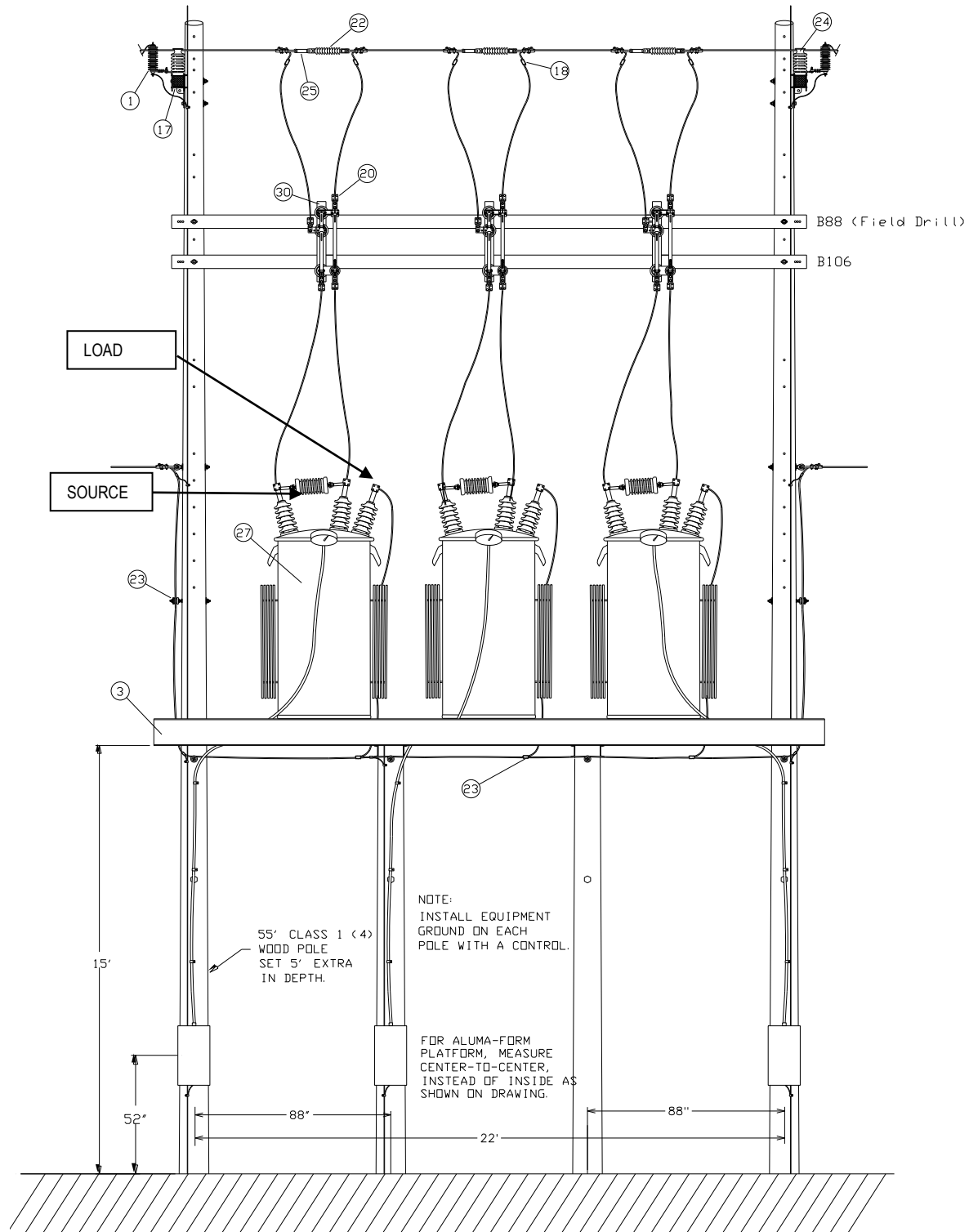
OPTIONS: 2, 1/0, 636

BOLT PLATE: NONE

NO.	ITEM ID	QTY	DESCRIPTION
1	ARR LI 003	6	ARRESTER, LIGHTNING, POLYMER, 21kV
2	BKT AC 003	6	BRACKET, CROSSARM MOUNTING CUTOOTS-ARRESTERS
3	BKT RG 001	1	BRACKET, 18' REGULATOR PLATFORM W/ BYPASS SWITCH CHANNEL(S)
4	BOL DA 004	5	BOLT, DOUBLE ARMING, 5/8 X 18
5	BOL MS 031	6	BOLT, MACHINE, SQUARE HEAD, 3/4X4
6	BOL MS 035	2	BOLT, MACHINE, SQUARE HEAD, 3/4X12
7	BOL MS 036	4	BOLT, MACHINE, SQUARE HEAD, 3/4X14
8	BOL MS 037	4	BOLT, MACHINE, SQUARE HEAD, 3/4X16
9	BOL MS 038	13	BOLT, MACHINE, SQUARE HEAD, 3/4X18
10	BOL MS 039	13	BOLT, MACHINE, SQUARE HEAD, 3/4X20
11	BOL TE 001	24	BOLT, TERMINAL KIT, S.S. BOLT, WASHERS
12	CLA SS ***	8	GENERAL CODE FOR STRAIGHT STRAIN CLAMP
13	COB AA ***	120	GENERAL CODE FOR PRIMARY CONDUCTOR
14	COB AA ***	60	GENERAL CODE FOR NEUTRAL CONDUCTOR
15	COB CO 028	30	CONDUCTOR, BARE COPPER, #4 SOFT DRAWN
16	COB TW 005	50	CONDUCTOR, EC GRADE, 4 AAC
18	CNN ** ***	6	GENERAL CODE FOR PRIMARY CONNECTOR
19	CNN CP ***	6	GENERAL CODE FOR NEUTRAL CONNECTOR
20	CNN TE ***	12	GENERAL CODE FOR TERMINAL CONNECTOR
21	CNN VG 003	8	CONNECTOR, VISE TYPE, 6-2 SOL. 10-2 SOL.
22	INS CO 001	3	INSULATOR, COMPOSITE, DEAD-END, 34.5KV
23	INS ST 002	5	INSULATOR, SPOOL TYPE, WHITE
24	INS VP 001	6	INSULATOR, VERTICAL POST, 34.5KV
25	LIK EX 001	3	LINK, EXTENSION, 18,000LB.
26	NUT PG 500	12	1/2"-13 NUT
27	REG VO 001	3	REGULATOR, VOLTAGE, 200A, 150KV BIL
28	SCW LA 005	24	SCREW, LAG, 1/4" X 2"
29	SCW HG 525	12	SCREW, 1/2"-13 X 4", HEX HEAD CAP, PLATE
30	SWE RB 001	3	SWITCH, REGULATOR BYPASS, 27KV
31	STP ST 002	12	STRAP, CONDUIT, 1 HOLE, 3/4"
32	STU LI 003	6	STUD, LINE POST, 3/4" HEAD- 3/4" DIA. X 7" SHANK
33	WAS RD 003	12	WASHER, ROUND, 1-3/8 IN. DIA., FOR 1/2 IN. BOLT
34	WAS RD 004	15	WASHER, ROUND, 1-3/4 IN. DIA., FOR 5/8 IN. BOLT
35	WAS RD 005	36	WASHER, ROUND, 2 IN. DIA., FOR 3/4 IN. BOLT
36	WAS SF 001	12	WASHER, SQUARE FLAT, 2 IN., FOR 1/2 IN. BOLT
37	WAS SF 003	48	WASHER, SQUARE, FLAT, 3 IN., FOR 3/4 IN. BOLT
38	WAS SL 001	12	WASHER, SPLIT LOCK, FOR 1/2 IN. BOLT
39	WAS SP 002	5	WASHER, SPRING, DOUBLE HELIX, FOR 3/4 IN. BOLT

REG4

418 AMP VOLTAGE REGULATOR – 26.4KV SYSTEM



REG4

418 AMP VOLTAGE REGULATOR – 26.4KV SYSTEM

OPTIONS: 636

BOLT PLATE: NONE

NO.	ITEM ID	QTY	DESCRIPTION
1	ARR LI 003	6	ARRESTER, LIGHTNING, POLYMER, 21kV
2	BKT AC 003	6	BRACKET, CROSSARM MOUNTING CUTOOTS-ARRESTERS
3	BKT RG 002	1	BRACKET, 22' REGULATOR PLATFORM W/ BYPASS SWITCH CHANNEL(S)
4	BOL DA 004	5	BOLT, DOUBLE ARMING, 5/8 X 18
5	BOL MS 031	6	BOLT, MACHINE, SQUARE HEAD, 3/4X4
6	BOL MS 035	2	BOLT, MACHINE, SQUARE HEAD, 3/4X12
7	BOL MS 036	4	BOLT, MACHINE, SQUARE HEAD, 3/4X14
8	BOL MS 037	4	BOLT, MACHINE, SQUARE HEAD, 3/4X16
9	BOL MS 038	18	BOLT, MACHINE, SQUARE HEAD, 3/4X18
10	BOL MS 039	18	BOLT, MACHINE, SQUARE HEAD, 3/4X20
11	BOL TE 001	24	BOLT, TERMINAL KIT, S.S. BOLT, WASHERS
12	CLA SS ***	8	GENERAL CODE FOR STRAIGHT STRAIN CLAMP
13	COB AA ***	120	GENERAL CODE FOR PRIMARY CONDUCTOR
14	COB AA ***	60	GENERAL CODE FOR NEUTRAL CONDUCTOR
15	COB CO 028	30	CONDUCTOR, BARE COPPER, #4 SOFT DRAWN
16	COB TW 005	50	CONDUCTOR, EC GRADE, 4 AAC
18	CNN ** ***	6	GENERAL CODE FOR PRIMARY CONNECTOR
19	CNN CP ***	6	GENERAL CODE FOR NEUTRAL CONNECTOR
20	CNN TE ***	12	GENERAL CODE FOR TERMINAL CONNECTOR
21	CNN VG 003	8	CONNECTOR, VISE TYPE, 6-2 SOL. 10-2 SOL.
22	INS CO 001	3	INSULATOR, COMPOSITE, DEAD-END, 34.5KV
23	INS ST 002	5	INSULATOR, SPOOL TYPE, WHITE
24	INS VP 001	6	INSULATOR, VERTICAL POST, 34.5kV
25	LIK EX 001	3	LINK, EXTENSION, 18,000LB.
26	NUT PG 500	12	1/2"-13 NUT
27	REG VO 002	3	REGULATOR, VOLTAGE, 418A/833KVA, 150KV BIL
28	SCW LA 005	24	SCREW, LAG, 1/4" X 2"
29	SCW HG 525	12	SCREW, 1/2"-13 X 4", HEX HEAD CAP, PLATE
30	SWE RB 001	3	SWITCH, REGULATOR BYPASS, 27KV
31	STP ST 002	12	STRAP, CONDUIT, 1 HOLE, 3/4"
32	STU LI 003	6	STUD, LINE POST, 3/4" HEAD- 3/4" DIA. X 7" SHANK
33	WAS RD 003	12	WASHER, ROUND, 1-3/8 IN. DIA., FOR 1/2 IN. BOLT
34	WAS RD 004	15	WASHER, ROUND, 1-3/4 IN. DIA., FOR 5/8 IN. BOLT
35	WAS RD 005	36	WASHER, ROUND, 2 IN. DIA., FOR 3/4 IN. BOLT
36	WAS SF 001	12	WASHER, SQUARE FLAT, 2 IN., FOR 1/2 IN. BOLT
37	WAS SF 003	48	WASHER, SQUARE, FLAT, 3 IN., FOR 3/4 IN. BOLT
38	WAS SL 001	12	WASHER, SPLIT LOCK, FOR 1/2 IN. BOLT
39	WAS SP 002	5	WASHER, SPRING, DOUBLE HELIX, FOR 3/4 IN. BOLT

VOLTAGE REGULATOR – 26.4KV SYSTEM