

# HORIZONTAL PRIMARY

## INTRODUCTION

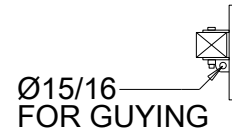
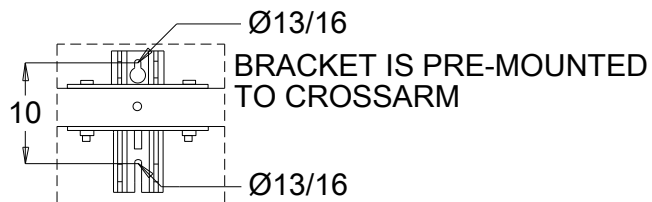
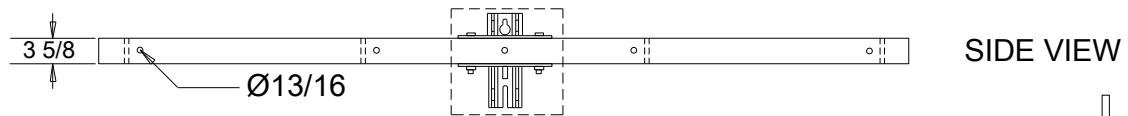
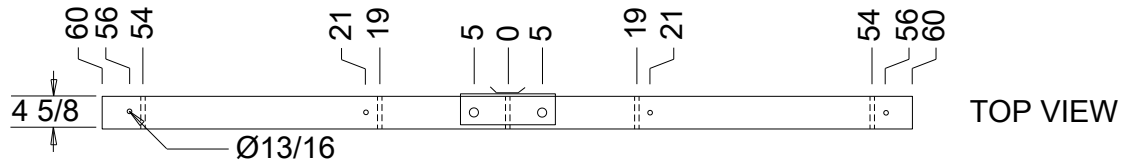
1. Horizontal Primary will be used for distribution lines crossing over structures, roads, waterways, railroads, and under transmission lines, or any condition that required clearances cannot be maintained by conventional vertical construction.
2. Single-phase taps from existing crossarm structures will not require a crossarm. The tap's pole location will be 40 inches below the centerline of the tangent crossarm. The crossarm for two-phase and three-phase lateral taps will be 40 inches below the centerline of the tangent.
3. If the pole has a shield mounted on a bayonet, the crossarm shall be mounted at 63 and 73 inches (B phase position) from the top of the pole. If there is no shield on the pole, the crossarm shall be mounted at 25 and 35 inches (A phase position) from the top of the pole.
4. Armor rods are issued with the plates T2 and T2-5 when primary conductor is 336KCM or larger.
5. All Horizontal Construction plates now include fiberglass crossarms instead of wood and steel crossarms. Since all the plates include the proper fiberglass crossarms, there is no modification or itemizing required when designing jobs. The details of the two fiberglass crossarms are listed below for reference:

APPLICATION	CROSSARM	DIMENSIONS (H x W x L)	WEIGHT	MOUNTING HARDWARE
Deadend	CXA FG 001	3 5/8" X 4 5/8" X 10'	72 lbs	3/4"
Tangent	CXA FG 002	4 5/8" X 3 5/8" X 10'	39 lbs	3/4"

6. A single deadend fiberglass crossarm CXA FG 001 is included for deadends and double-deadends.
7. For double circuit poles with no static wire, the crossarms should be installed at the static and C phase positions.

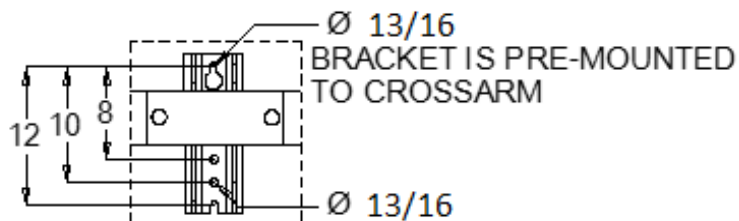
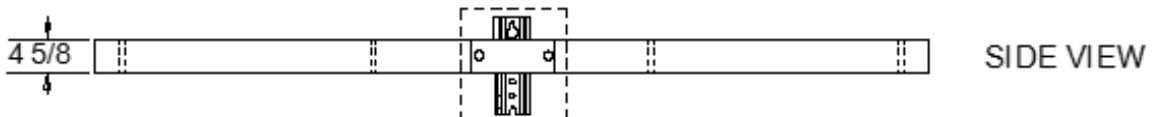
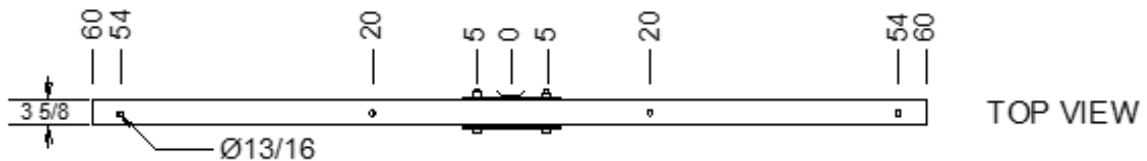
## II. CROSSARM DRILLING DETAIL (ALL DIMENSIONS ARE INCHES)

### CXA FG 001 (DEADEND)



WEIGHT: 72 LBS

### CXA FG 002 (TANGENT)



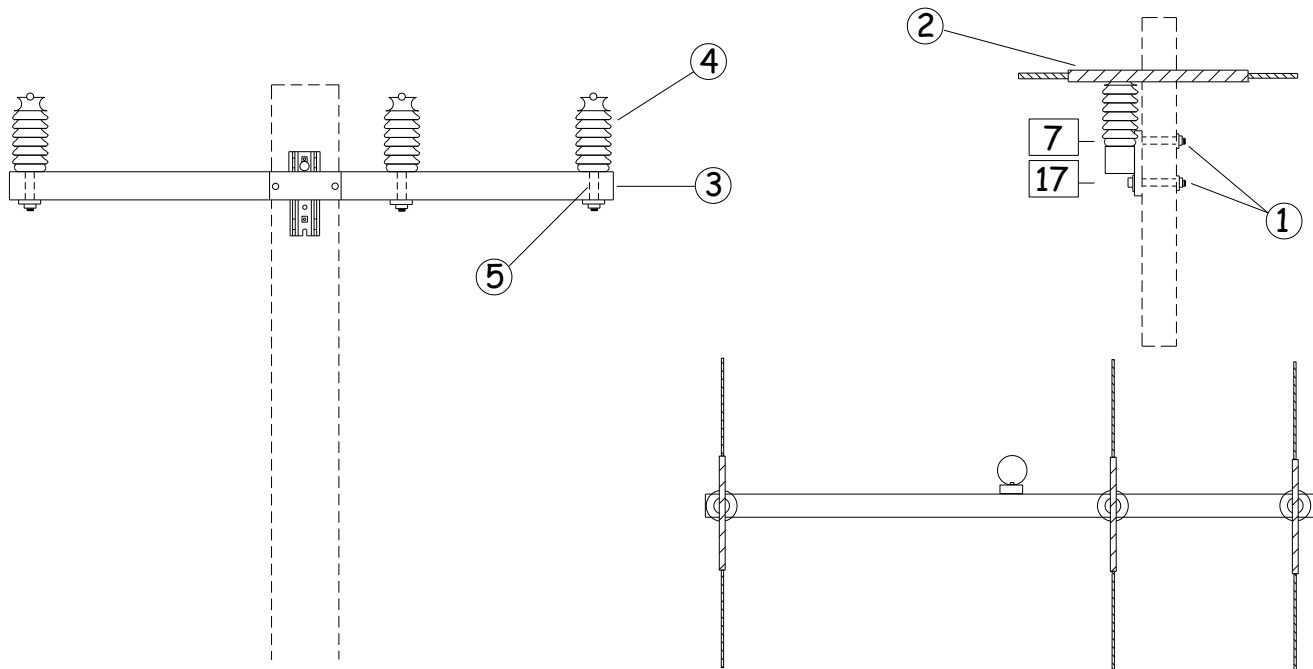
WEIGHT: 39 LBS

## T1-5

### 0 TO 5 DEGREE ANGLE – UNSHIELDED

OPTIONS: 6CU, 4CU, 2CU, 1/0CU, 2/0CU, 4/0CU, 2, 1/0, 3/0, 336, 636

BOLT PLATE: NONE



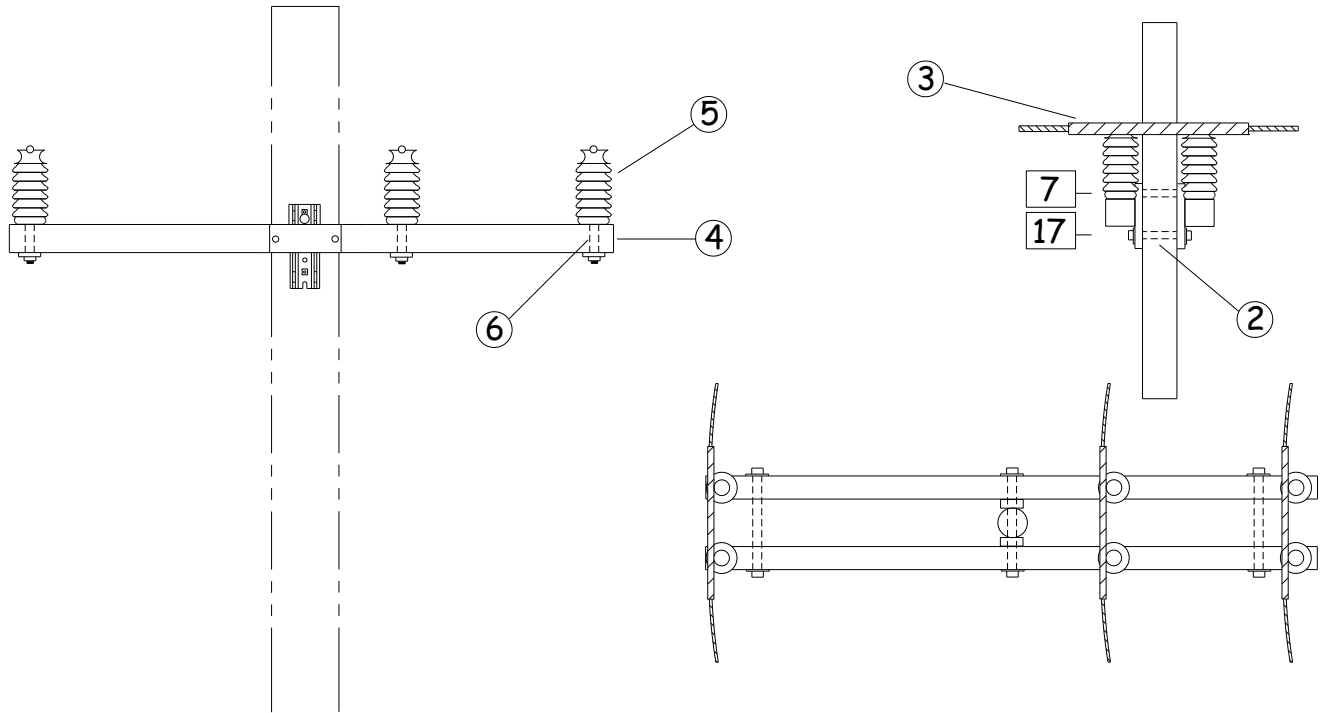
NO.	ITEM ID	QTY	DESCRIPTION
1	BOL MS 021	2	BOLT, MACHINE, 5/8X16
2	COB TW 005	12	CONDUCTOR, EC GRADE 4AAC
3	CXA FG 002	1	CROSSARM, FIBERGLASS TANGENT, 3 5/8" X 4 5/8" X 10', 39 LBS
4	INS VP 001	3	INSULATOR, VERTICAL POST, 34.5KV
5	STU LI 003	3	STUD, LINE POST, 3/4 IN. HEAD, 3/4 IN. DIA. X 7 IN. SHANK
6	WAS RD 004	4	WASHER, ROUND, 1-3/4 IN., FOR 5/8 IN. DIA. BOLT
7	WAS RD 005	6	WASHER, ROUND, 2 IN., FOR 3/4 IN. DIA. BOLT
8	WAS SF 003	7	WASHER, SQUARE, FLAT, 3 IN., FOR 3/4 IN. DIA. BOLT
9	WAS SP 001	2	WASHER, SPRING, DOUBLE HELIX, FOR 5/8 IN. DIA. BOLT
10	WAS SP 002	5	WASHER, SPRING, DOUBLE HELIX, FOR 3/4 IN. DIA. BOLT

## T2-5

### 5 TO 10 DEGREE ANGLE – UNSHIELDED

OPTIONS: 6CU, 4CU, 2CU, 1/0CU, 2/0CU, 4/0CU, 2, 1/0, 3/0, 336, 636

BOLT PLATE: NONE



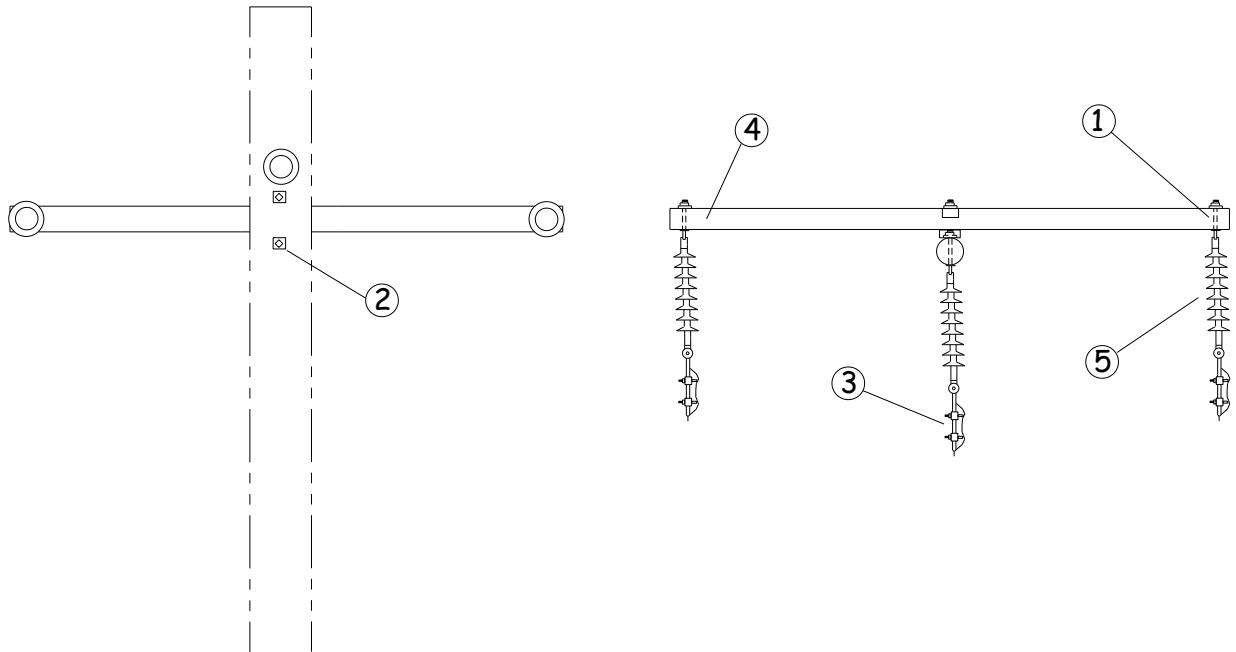
NO.	ITEM ID	QTY	DESCRIPTION
1	BOL DA 021	3	BOLT, DOUBLE ARMING, 3/4X26
2	BOL MS 021	2	BOLT, MACHINE, 5/8X16
3	COB TW 005	24	CONDUCTOR, EC GRADE 4AAC
4	CXA FG 002	2	CROSSARM, FIBERGLASS TANGENT, 3 5/8" X 4 5/8" X 10', 39 LBS
5	INS VP 001	6	INSULATOR, VERTICAL POST, 34.5KV
6	STU LI 003	6	STUD, LINE POST, 3/4 IN. HEAD, 3/4 IN. DIA. X 7 IN. SHANK
7	WAS RD 004	4	WASHER, ROUND, 1-3/4 IN., FOR 5/8 IN. DIA. BOLT
8	WAS RD 005	7	WASHER, ROUND, 2 IN., FOR 3/4 IN. DIA. BOLT
9	WAS SF 003	8	WASHER, SQUARE, FLAT, 3 IN., FOR 3/4 IN. DIA. BOLT
10	WAS SP 001	2	WASHER, SPRING, DOUBLE HELIX, FOR 5/8 IN. DIA. BOLT
11	WAS SP 002	6	WASHER, SPRING, DOUBLE HELIX, FOR 3/4 IN. DIA. BOLT

## T5-5

### DEADEND – UNSHIELDED

OPTIONS: 6CU, 4CU, 2CU, 1/0CU, 2/0CU, 4/0CU, 2, 1/0, 3/0, 336, 636

BOLT PLATE: NONE



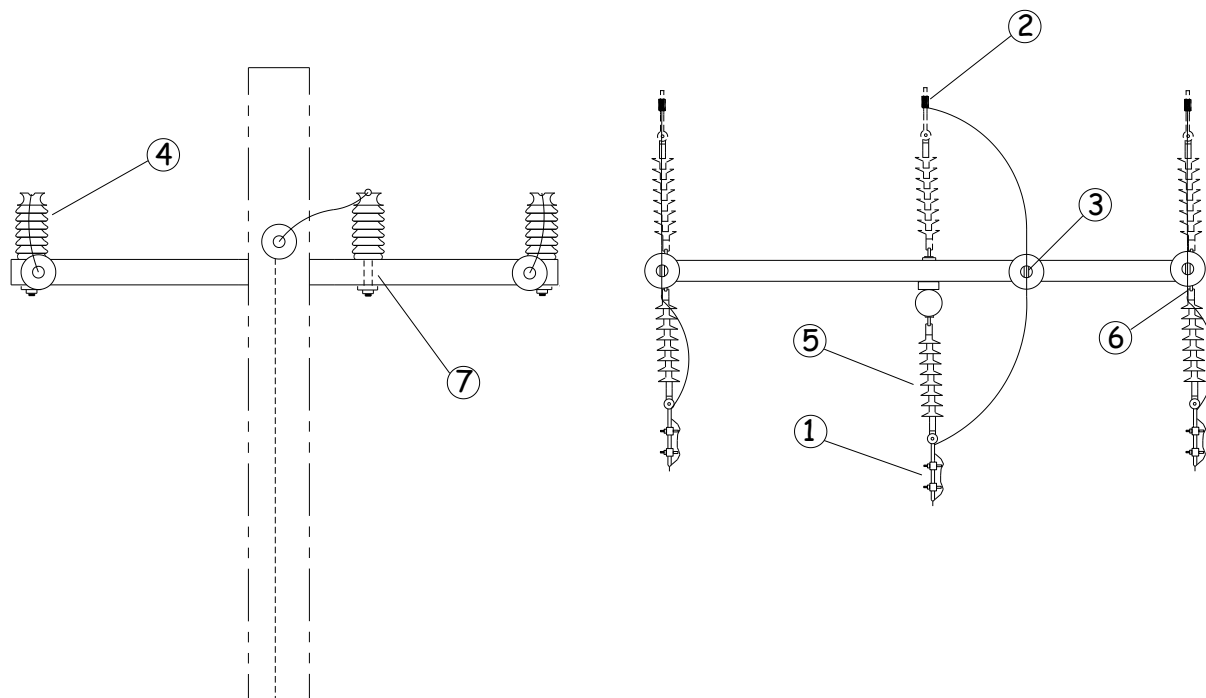
NO.	ITEM ID	QTY	DESCRIPTION
1	BOL DA 021	3	BOLT, DOUBLE ARMING, 3/4X26
2	BOL MS 037	2	BOLT, MACHINE, 3/4X16
3	CLA SS ***	3	GENERAL CODE FOR STRAIGHT STRAIN CLAMP
4	CXA FG 001	1	CROSSARM, FIBERGLASS DEADEND, 3 5/8" X 4 5/8" X 10', 63 LBS
5	INS CO 001	3	INSULATOR, DEADEND, POLYMER, 27KV
6	NUT EY 003	3	NUT, EYE 3/4
7	WAS RD 005	5	WASHER, ROUND, 2 IN., FOR 3/4 IN. DIA. BOLT
8	WAS SF 003	10	WASHER, SQUARE, FLAT, 3 IN., FOR 3/4 IN. DIA. BOLT
9	WAS SP 002	5	WASHER, SPRING, DOUBLE HELIX, FOR 3/4 IN. DIA. BOLT

## T6-5

### EXTENSION OF EXISTING DEADEND – UNSHIELDED

OPTIONS: 6CU, 4CU, 2CU, 1/0CU, 2/0CU, 4/0CU, 2, 1/0, 3/0, 336, 636

BOLT PLATE: NONE



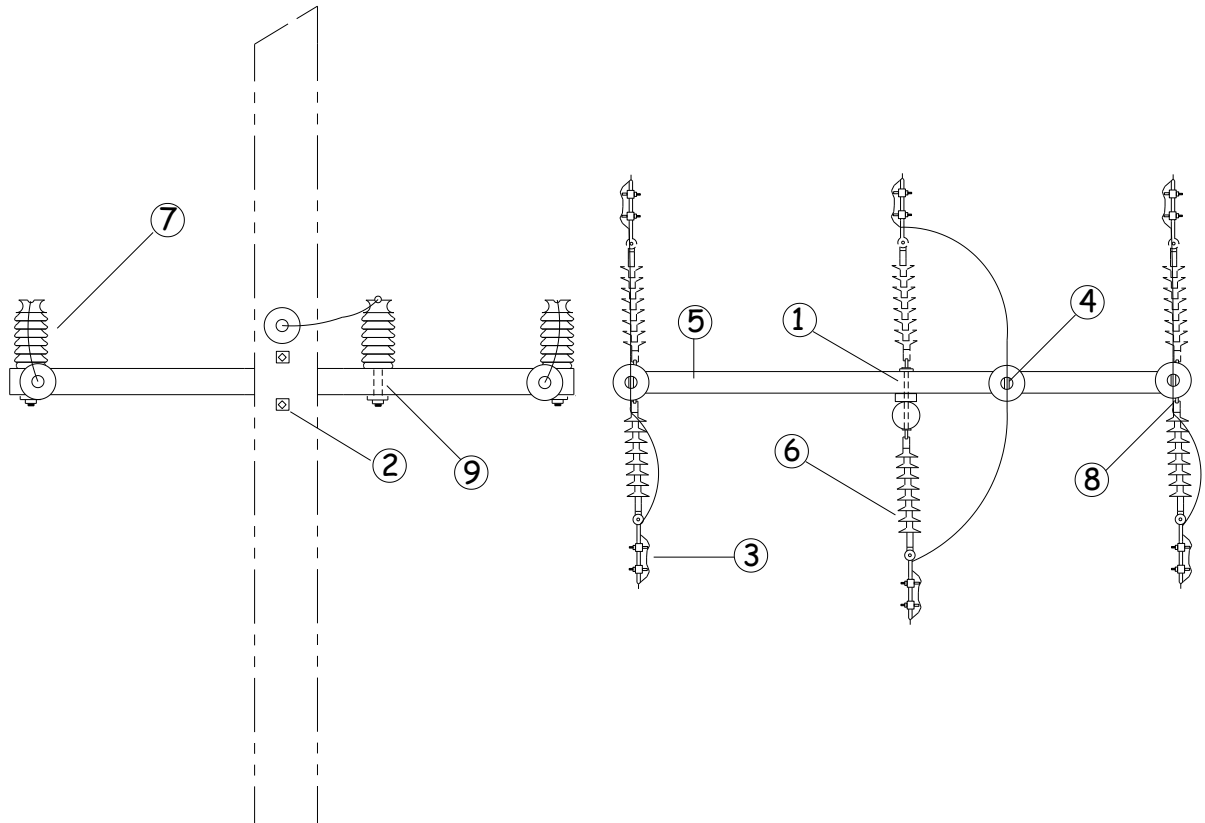
NO.	ITEM ID	QTY	DESCRIPTION
1	CLA SS ***	3	GENERAL CODE FOR STRAIGHT STRAIN CLAMP
2	CNN ** ***	3	GENERAL CODE FOR CONNECTOR
3	COB ** ***	12	GENERAL CODE FOR TIE WIRE
4	INS VP 001	3	INSULATOR, VERTICAL POST, 34.5KV
5	INS CO 001	3	INSULATOR, DEADEND, POLYMER, 27KV
6	NUT EY 003	3	NUT, EYE 3/4
7	STU LI 003	3	STUD, LINE POST, 3/4 IN. DIA. HEAD, 3/4 IN. DIA. X 7 IN. SHANK
8	WAS SF 003	3	WASHER, SQUARE, FLAT, 3 IN., FOR 3/4 IN. DIA. BOLT

# T8-5

## DOUBLE DEADEND – UNSHIELDED

OPTIONS: 6CU, 4CU, 2CU, 1/0CU, 2/0CU, 4/0CU, 2, 1/0, 3/0, 336, 636

BOLT PLATE: NONE



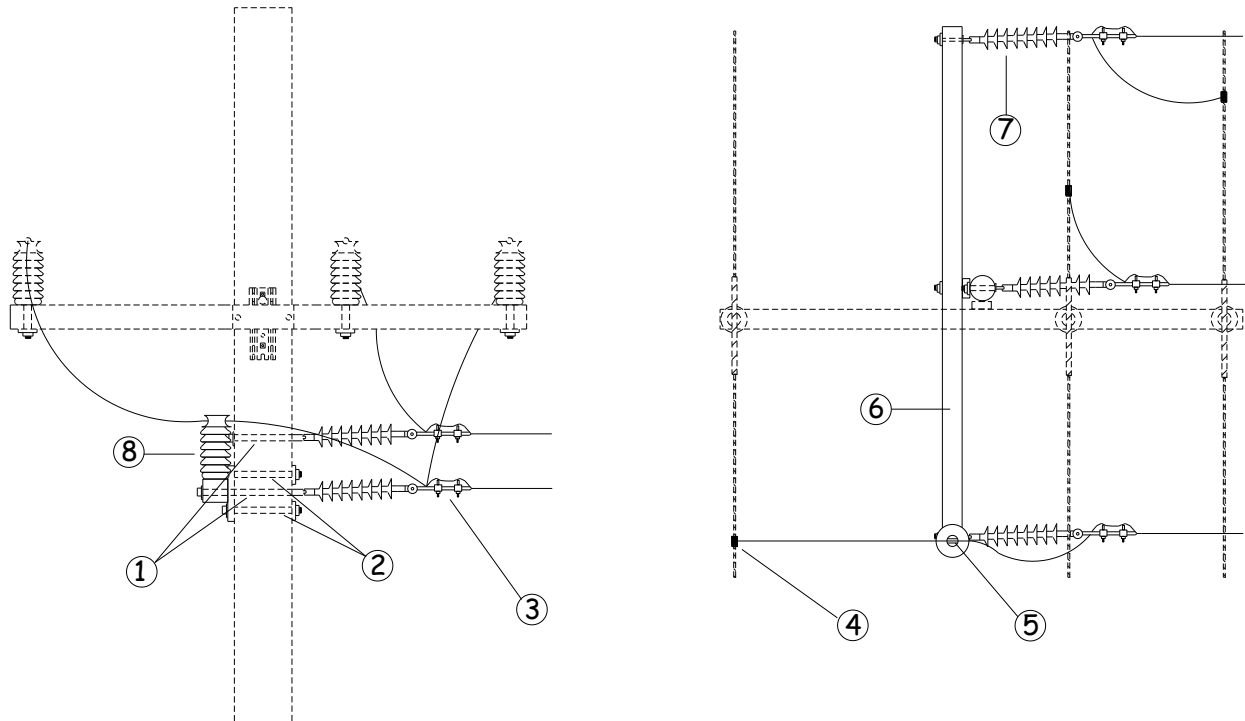
NO.	ITEM ID	QTY	DESCRIPTION
1	BOL DA 021	3	BOLT, DOUBLE ARMING, 3/4X26
2	BOL MS 037	2	BOLT, MACHINE, 3/4X16
3	CLA SS ***	3	GENERAL CODE FOR STRAIGHT STRAIN CLAMP
4	COB ** ***	12	GENERAL CODE FOR TIE WIRE
5	CXA FG 001	1	CROSSARM, FIBERGLASS DEADEND, 3 5/8" X 4 5/8" X 10", 63 LBS
6	INS CO 001	6	INSULATOR, DEADEND, POLYMER, 27KV
7	INS VP 001	3	INSULATOR, VERTICAL POST, 34.5KV
8	NUT EY 003	6	NUT, EYE 3/4
9	STU LI 003	3	STUD, LINE POST, 3/4 IN. DIA. HEAD, 3/4 IN. DIA. X 7 IN. SHANK
10	WAS RD 005	2	WASHER, ROUND, 2 IN., FOR 3/4 IN. DIA. BOLT
11	WAS SF 003	16	WASHER, SQUARE, FLAT, 3 IN., FOR 3/4 IN. DIA. BOLT
12	WAS SP 002	2	WASHER, SPRING, DOUBLE HELIX, FOR 3/4 IN. DIA. BOLT

## T20-5

### TAP – UNSHIELDED

OPTIONS: 6CU, 4CU, 2CU, 1/0CU, 2/0CU, 4/0CU, 2, 1/0, 3/0, 336, 636

BOLT PLATE: NONE



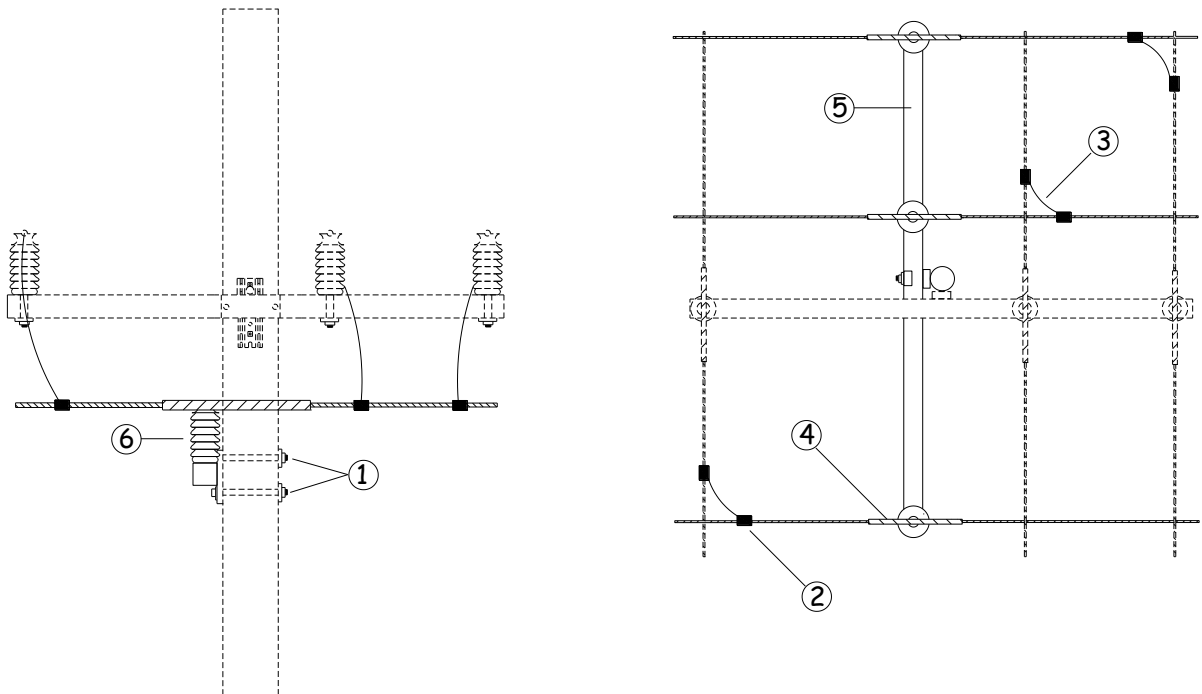
NO.	ITEM ID	QTY	DESCRIPTION
1	BOL DA 021	3	BOLT, DOUBLE ARMING, 3/4X26
2	BOL MS 037	2	BOLT, MACHINE, 3/4X16
3	CLA SS ***	3	GENERAL CODE FOR STRAIGHT STRAIN CLAMP
4	CNN ** ***	3	GENERAL CODE FOR CONNECTOR
5	COB ** ***	8	GENERAL CODE FOR TIE WIRE
6	CXA FG 001	1	CROSSARM, FIBERGLASS DEADEND, 3 5/8" X 4 5/8" X 10", 63 LBS
7	INS CO 001	3	INSULATOR, DEADEND, POLYMER, 27KV
8	INS VP 001	1	INSULATOR, VERTICAL POST, 34.5KV
9	NUT EY 003	3	NUT, EYE 3/4
10	STU LI 003	1	STUD, LINE POST, 3/4 IN. DIA. HEAD, 3/4 IN. DIA. X 7 IN. SHANK
11	WAS RD 005	2	WASHER, ROUND, 2 IN., FOR 3/4 IN. DIA. BOLT
12	WAS SF 003	12	WASHER, SQUARE, FLAT, 3 IN., FOR 3/4 IN. DIA. BOLT
13	WAS SP 002	2	WASHER, SPRING, DOUBLE HELIX, FOR 3/4 IN. DIA. BOLT



**T22-5****0 TO 5 DEGREE ANGLE CROSS TAP – UNSHIELDED**

OPTIONS: 6CU, 4CU, 2CU, 1/0CU, 2/0CU, 4/0CU, 2, 1/0, 3/0, 336, 636

BOLT PLATE: NONE



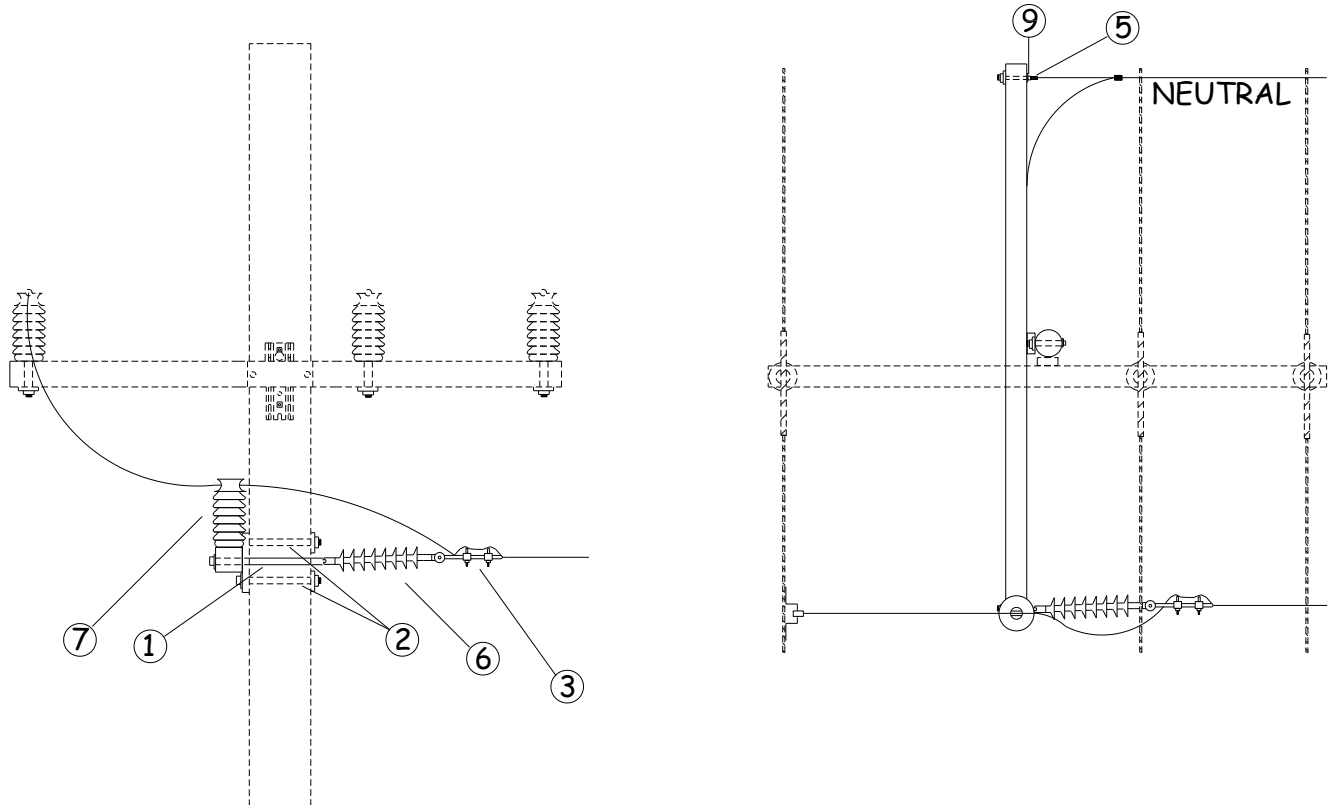
NO.	ITEM ID	QTY	DESCRIPTION
1	BOL MS 021	2	BOLT, MACHINE, 5/8X16
2	CNN ** ***	6	GENERAL CODE FOR CONNECTOR
3	COB CO ***	24	GENERAL CODE FOR CONDUCTOR
4	COB TW 005	12	CONDUCTOR, EC GRADE 4AAC
5	CXA FG 002	1	CROSSARM, FIBERGLASS TANGENT, 3 5/8" X 4 5/8" X 10", 39 LBS
6	INS VP 001	3	INSULATOR, VERTICAL POST, 34.5KV
7	STU LI 003	3	STUD, LINE POST, 3/4 IN. HEAD, 3/4 IN. DIA. X 7 IN. SHANK
8	WAS RD 004	2	WASHER, ROUND, 1-3/4 IN., FOR 5/8 IN. DIA. BOLT
9	WAS RD 005	8	WASHER, ROUND, 2 IN., FOR 3/4 IN. DIA. BOLT
10	WAS SF 003	6	WASHER, SQUARE, FLAT, 3 IN., FOR 3/4 IN. DIA. BOLT
11	WAS SP 001	2	WASHER, SPRING, DOUBLE HELIX, FOR 5/8 IN. DIA. BOLT
12	WAS SP 002	2	WASHER, SPRING, DOUBLE HELIX, FOR 3/4 IN. DIA. BOLT

## VA20-1

### TAP OFF EXISTING T1-5 OR T2-5 – UNSHIELDED

OPTIONS: 6CU, 4CU, 2CU, 1/0CU, 2, 1/0

BOLT PLATE: NONE



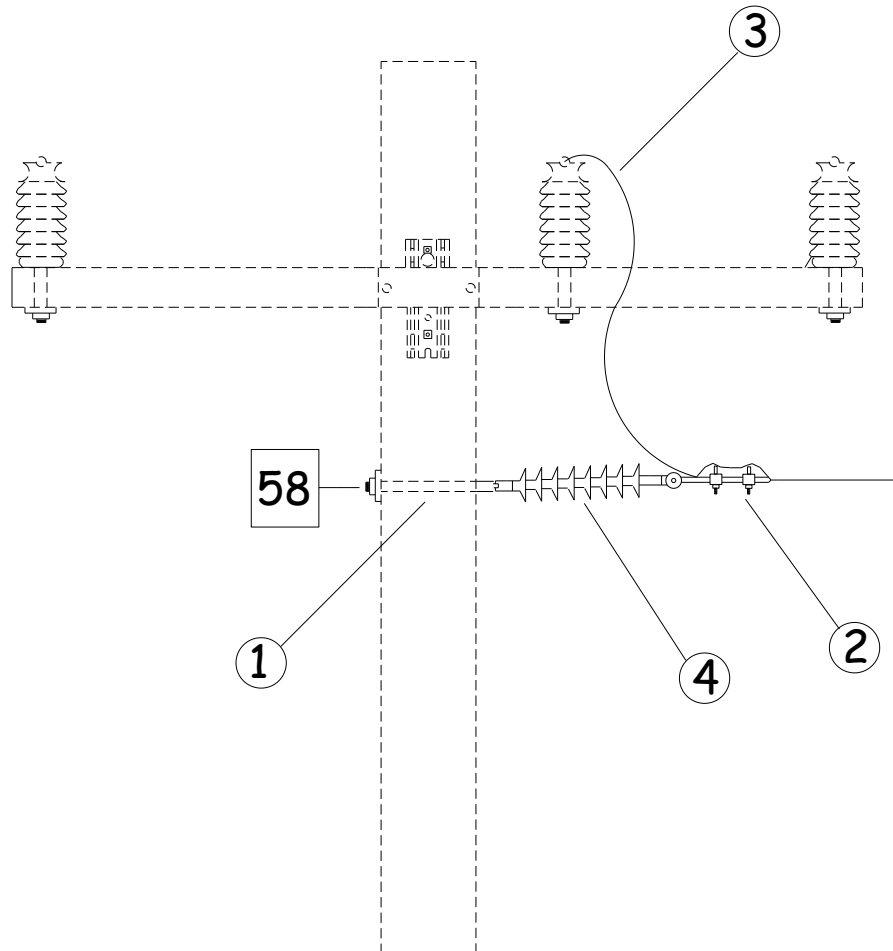
NO.	ITEM ID	QTY	DESCRIPTION
1	BOL DA 015	2	BOLT, DOUBLE ARMING, 3/4X14
2	BOL MS 037	2	BOLT, MACHINE, 3/4X16
3	CLA SS ***	1	GENERAL CODE FOR STRAIGHT STRAIN CLAMP
4	CXA FG 001	1	CROSSARM, FIBERGLASS DEADEND, 3 5/8" X 4 5/8" X 10", 63 LBS
5	GRI PR 001	1	GRIP, PREFORMED, 3 NO 6 AW
6	INS CO 001	1	INSULATOR, DEADEND, POLYMER
7	INS VP 001	1	INSULATOR, VERTICAL POST, 34.5KV
8	NUT EY 003	1	NUT, EYE 3/4
9	NUT TE 002	1	NUT, THIMBLE EYE, 3/4, SINGLE EYE
10	STU LI 002	1	STUD, LINE POST, 3/4 IN. HEAD, 5/8 IN. DIA. X 7 IN. SHANK
11	WAS RD 005	4	WASHER, ROUND, 2 IN., FOR 3/4 IN. DIA. BOLT
12	WAS SF 003	11	WASHER, SQUARE, FLAT, 3 IN., FOR 3/4 IN. DIA. BOLT
13	WAS SP 002	2	WASHER, SPRING, DOUBLE HELIX, FOR 3/4 IN. DIA. BOLT

## VA20-5

### TAP OFF EXISTING T1 OR T2 – UNSHIELDED

OPTIONS: 6CU, 4CU, 2CU, 1/0CU, 2, 1/0

BOLT PLATE: NONE



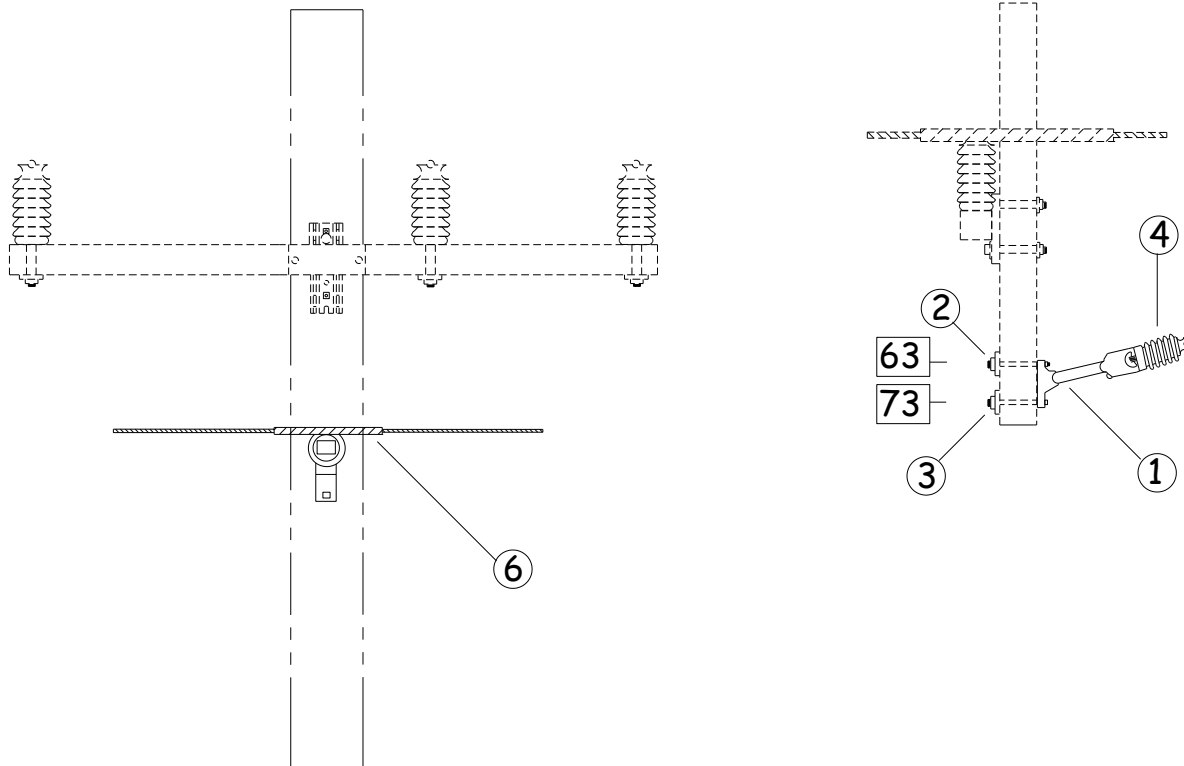
NO.	ITEM ID	QTY	DESCRIPTION
1	BOL DA 015	1	BOLT, DOUBLE ARMING, 3/4X14
2	CLA SS ***	1	GENERAL CODE FOR STRAIGHT STRAIN CLAMP
3	COB CO ***	10	GENERAL CODE FOR CONDUCTOR
4	INS CO 001	1	INSULATOR, DEADEND, POLYMER, 27KV
5	NUT EY 003	1	NUT, EYE 3/4
6	WAS RD 005	2	WASHER, ROUND, 2 IN., FOR 3/4 IN. DIA. BOLT
7	WAS SF 003	2	WASHER, SQUARE, FLAT, 3 IN., FOR 3/4 IN. DIA. BOLT
8	WAS SP 002	2	WASHER, SPRING, DOUBLE HELIX, FOR 3/4 IN. DIA. BOLT

## VA22-5

### 0 TO 5 DEGREE CROSS – UNSHIELDED

OPTIONS: 6CU, 4CU, 2CU, 1/0CU, 2, 1/0

BOLT PLATE: NONE



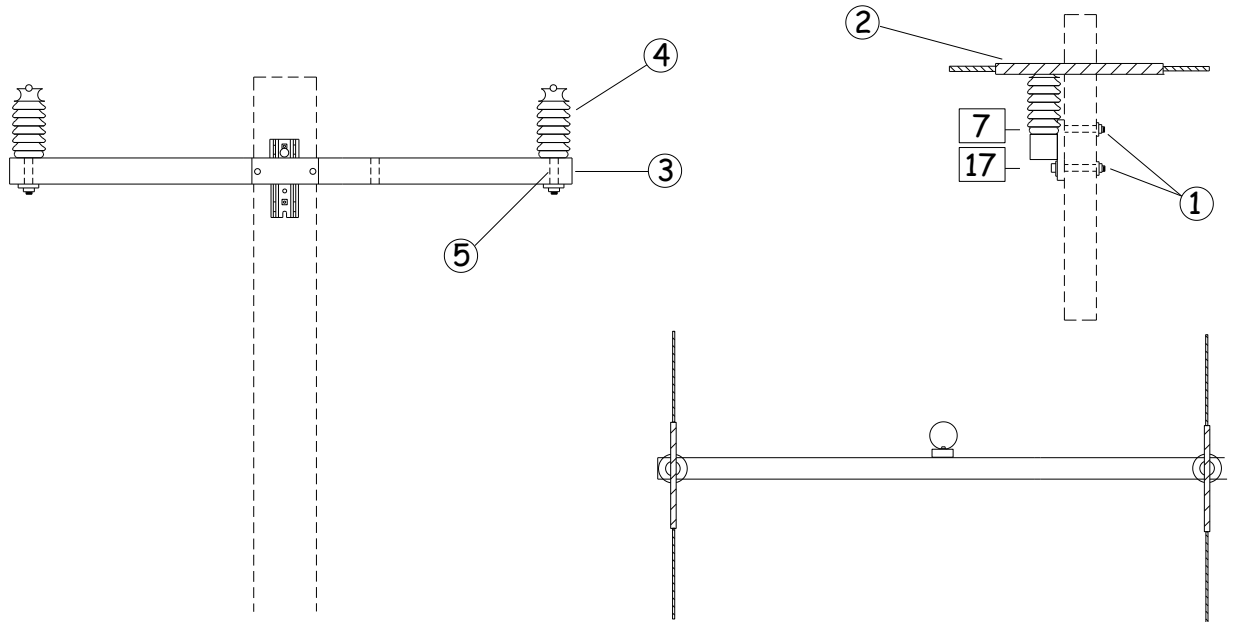
NO.	ITEM ID	QTY	DESCRIPTION
1	BKT FS 001	1	BRACKET, FIBERGLASS STANDOFF, 18 IN., 2 IN. ROD
2	BOL DA 015	1	BOLT, DOUBLE ARMING, 3/4X14
3	BOL MS 035	1	BOLT, MACHINE, SQUARE HEAD, 3/4X12
4	INS VP 001	3	INSULATOR, VERTICAL POST, 34.5KV
5	STU LI 001	1	STUD, LINE POST, 3/4 IN. HEAD, 3/4 IN. DIA. X 1-3/4 IN. SHANK
6	TIE PR ***	1	GENERAL CODE FOR PREFORMED TIE
7	WAS RD 005	4	WASHER, ROUND, 2 IN., FOR 3/4 IN. DIA. BOLT
8	WAS SF 003	2	WASHER, SQUARE, FLAT, 3 IN., FOR 3/4 IN. DIA. BOLT
9	WAS SP 002	2	WASHER, SPRING, DOUBLE HELIX, FOR 3/4 IN. DIA. BOLT

## VB1-5

0 TO 5 DEGREE ANGLE – UNSHIELDED

OPTIONS: 6CU, 4CU, 2CU, 1/0CU, 2, 1/0

BOLT PLATE: NONE



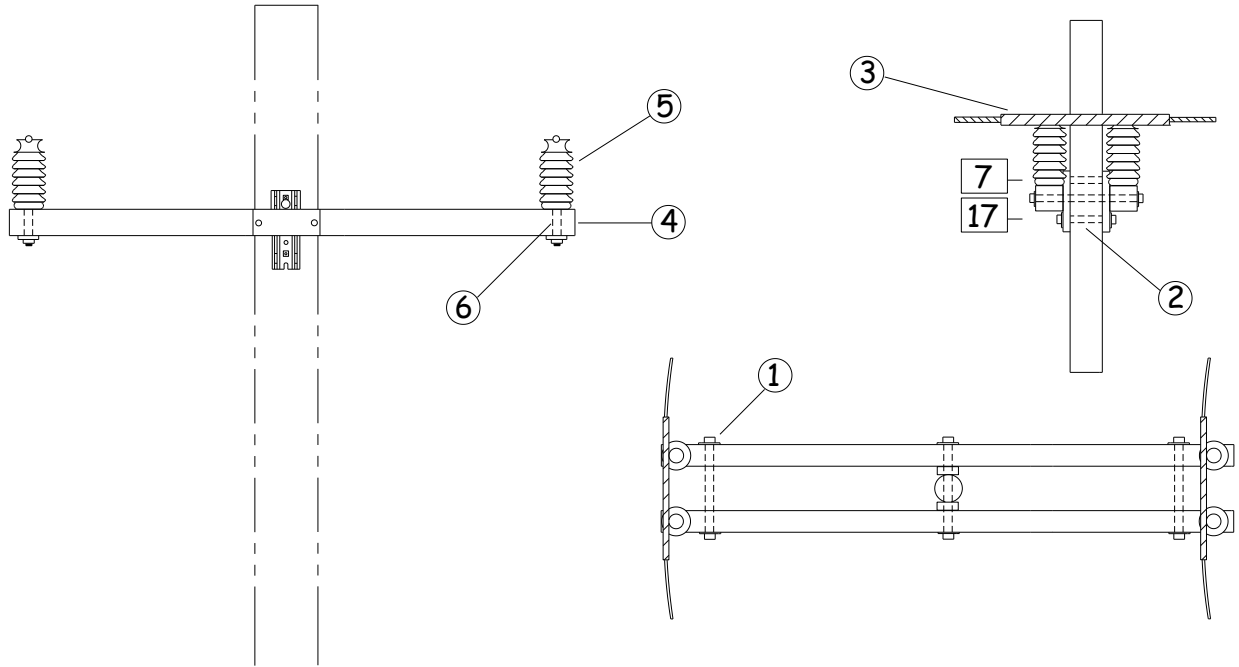
NO.	ITEM ID	QTY	DESCRIPTION
1	BOL MS 021	2	BOLT, MACHINE, 5/8X16
2	COB TW 005	8	CONDUCTOR, EC GRADE 4AAC
3	CXA FG 002	1	CROSSARM, FIBERGLASS TANGENT, 3 5/8" X 4 5/8" X 10', 39 LBS
4	INS VP 001	2	INSULATOR, VERTICAL POST, 34.5KV
5	STU LI 003	2	STUD, LINE POST, 3/4 IN. HEAD, 3/4 IN. DIA. X 7 IN. SHANK
6	WAS RD 004	3	WASHER, ROUND, 1-3/4 IN., FOR 5/8 IN. DIA. BOLT
7	WAS RD 005	5	WASHER, ROUND, 2 IN., FOR 3/4 IN. DIA. BOLT
8	WAS SF 003	6	WASHER, SQUARE, FLAT, 3 IN., FOR 3/4 IN. DIA. BOLT
9	WAS SP 001	2	WASHER, SPRING, DOUBLE HELIX, FOR 5/8 IN. DIA. BOLT
10	WAS SP 002	4	WASHER, SPRING, DOUBLE HELIX, FOR 3/4 IN. DIA. BOLT

# VB2-5

## 5 TO 10 DEGREE ANGLE – UNSHIELDED

OPTIONS: 6CU, 4CU, 2CU, 1/0CU, 2, 1/0

BOLT PLATE: NONE



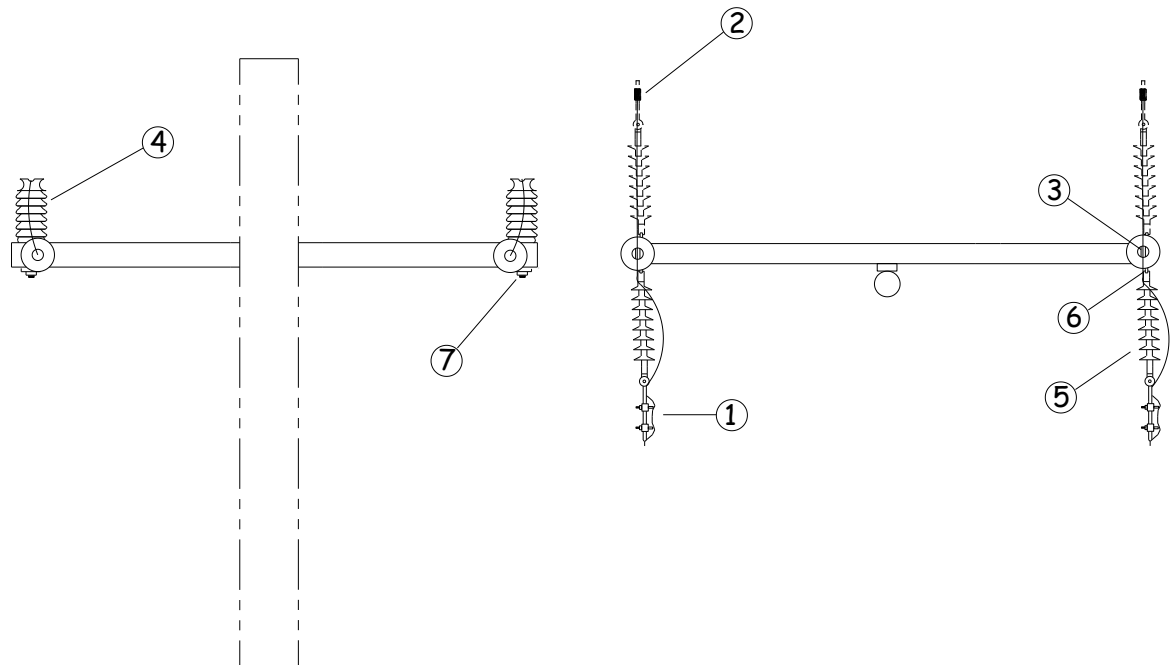
NO.	ITEM ID	QTY	DESCRIPTION
1	BOL DA 021	2	BOLT, DOUBLE ARMING, 3/4X26
2	BOL MS 021	2	BOLT, MACHINE, 5/8X16
3	COB TW 005	16	CONDUCTOR, EC GRADE 4AAC
4	CXA FG 002	2	CROSSARM, FIBERGLASS TANGENT, 3 5/8" X 4 5/8" X 10", 39 LBS
5	INS VP 001	4	INSULATOR, VERTICAL POST, 34.5KV
6	STU LI 003	4	STUD, LINE POST, 3/4 IN. HEAD, 3/4 IN. DIA. X 7 IN. SHANK
7	WAS RD 004	4	WASHER, ROUND, 1-3/4 IN., FOR 5/8 IN. DIA. BOLT
8	WAS RD 005	7	WASHER, ROUND, 2 IN., FOR 3/4 IN. DIA. BOLT
9	WAS SF 003	8	WASHER, SQUARE, FLAT, 3 IN., FOR 3/4 IN. DIA. BOLT
10	WAS SP 001	2	WASHER, SPRING, DOUBLE HELIX, FOR 5/8 IN. DIA. BOLT
11	WAS SP 002	6	WASHER, SPRING, DOUBLE HELIX, FOR 3/4 IN. DIA. BOLT

# VB6-5

## EXTENSION OF EXISTING DEADEND – UNSHIELDED

OPTIONS: 6CU, 4CU, 2CU, 1/0CU, 2, 1/0

BOLT PLATE: NONE



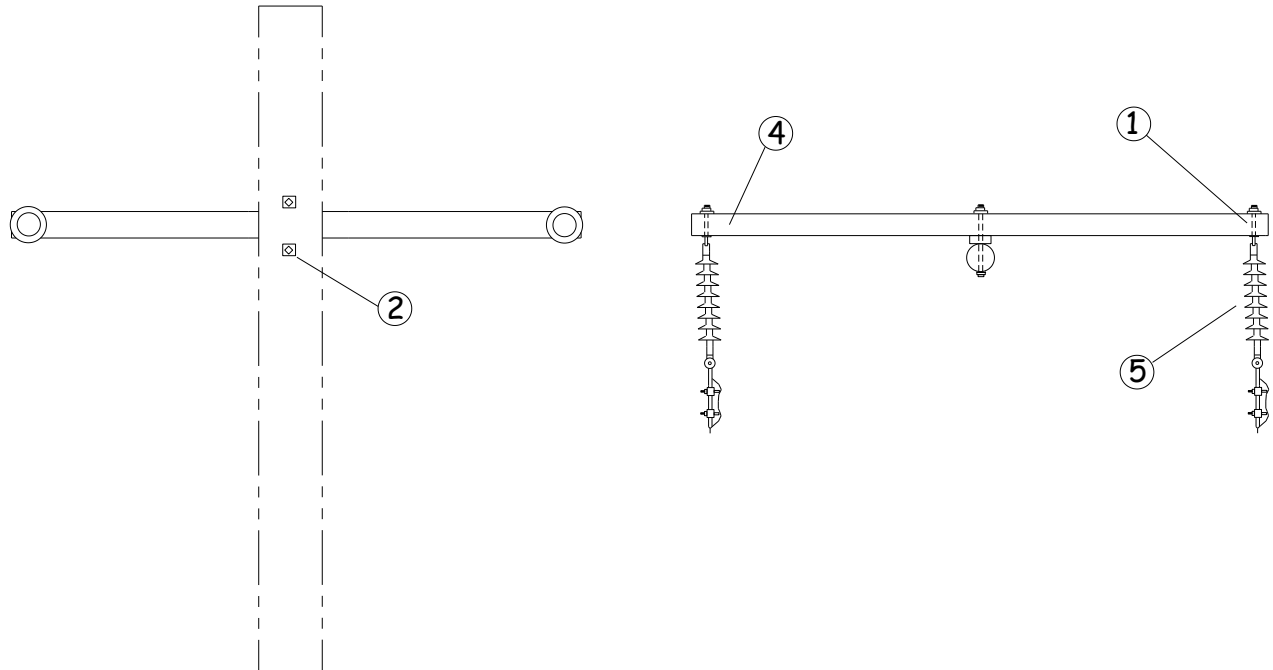
NO.	ITEM ID	QTY	DESCRIPTION
1	CLA SS ***	2	GENERAL CODE FOR STRAIGHT STRAIN CLAMP
2	CNN ** ***	2	GENERAL CODE FOR CONNECTOR
3	COB ** ***	8	GENERAL CODE FOR TIE WIRE
4	INS VP 001	2	INSULATOR, VERTICAL POST, 34.5KV
5	INS CO 001	2	INSULATOR, DEADEND, POLYMER, 27KV
6	NUT EY 003	2	NUT, EYE 3/4
7	STU LI 003	2	STUD, LINE POST, 3/4 IN. DIA. HEAD, 3/4 IN. DIA. X 7 IN. SHANK
8	WAS SF 003	2	WASHER, SQUARE, FLAT, 3 IN., FOR 3/4 IN. DIA. BOLT

## VB7-5

### DEADEND – UNSHIELDED

OPTIONS: 6CU, 4CU, 2CU, 1/0CU, 2, 1/0

BOLT PLATE: NONE



NO.	ITEM ID	QTY	DESCRIPTION
1	BOL DA 021	3	BOLT, DOUBLE ARMING, 3/4X26
2	BOL MS 037	2	BOLT, MACHINE, 3/4X16
3	CLA SS ***	3	GENERAL CODE FOR STRAIGHT STRAIN CLAMP
4	CXA FG 001	1	CROSSARM, FIBERGLASS DEADEND, 3 5/8" X 4 5/8" X 10', 63 LBS
5	INS CO 001	3	INSULATOR, DEADEND, POLYMER, 27KV
6	NUT EY 003	3	NUT, EYE 3/4
7	WAS RD 005	5	WASHER, ROUND, 2 IN., FOR 3/4 IN. DIA. BOLT
8	WAS SF 003	10	WASHER, SQUARE, FLAT, 3 IN., FOR 3/4 IN. DIA. BOLT
9	WAS SP 002	5	WASHER, SPRING, DOUBLE HELIX, FOR 3/4 IN. DIA. BOLT

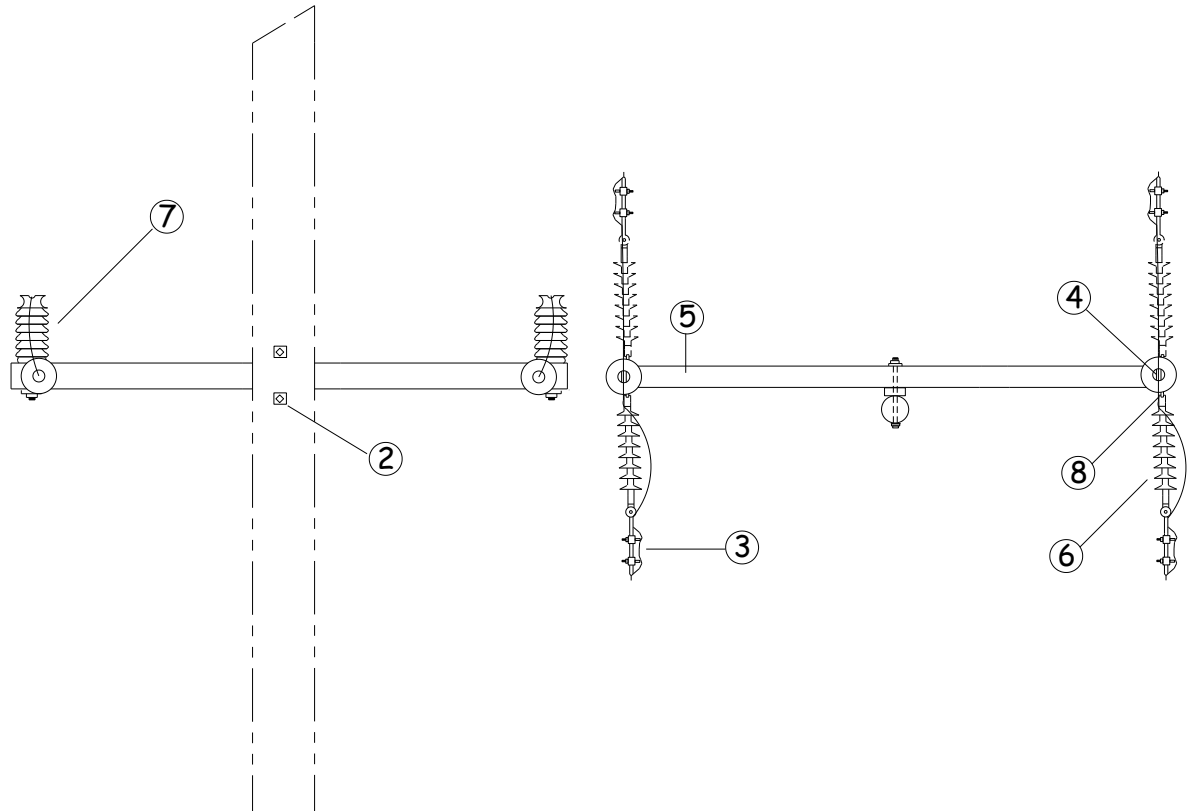


## VB8-5

### DOUBLE DEADEND – UNSHIELDED

OPTIONS: 6CU, 4CU, 2CU, 1/0CU, 2, 1/0

BOLT PLATE: NONE



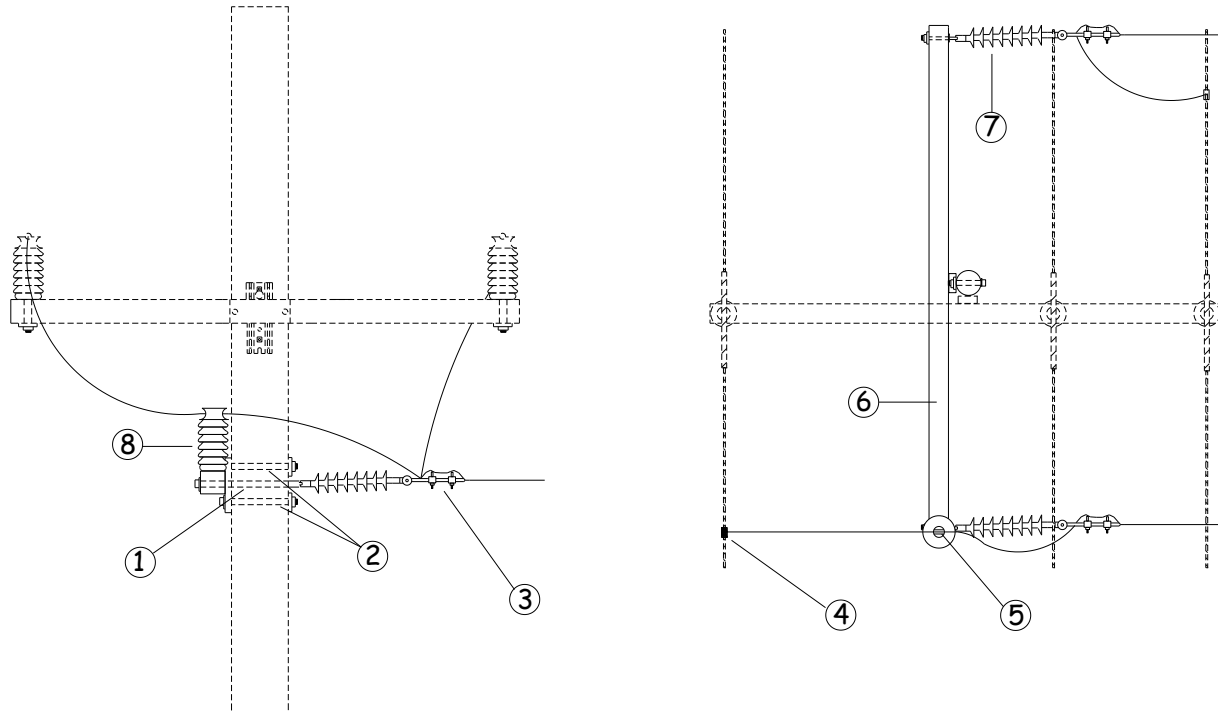
NO.	ITEM ID	QTY	DESCRIPTION
1	BOL DA 021	2	BOLT, DOUBLE ARMING, 3/4X26
2	BOL MS 037	2	BOLT, MACHINE, 3/4X16
3	CLA SS ***	2	GENERAL CODE FOR STRAIGHT STRAIN CLAMP
4	COB ** ***	8	GENERAL CODE FOR TIE WIRE
5	CXA FG 001	1	CROSSARM, FIBERGLASS DEADEND, 3 5/8" X 4 5/8" X 10', 63 LBS
6	INS CO 001	4	INSULATOR, DEADEND, POLYMER, 27KV
7	INS VP 001	2	INSULATOR, VERTICAL POST, 34.5KV
8	NUT EY 003	4	NUT, EYE 3/4
9	STU LI 003	2	STUD, LINE POST, 3/4 IN. DIA. HEAD, 3/4 IN. DIA. X 7 IN. SHANK
10	WAS RD 005	2	WASHER, ROUND, 2 IN., FOR 3/4 IN. DIA. BOLT
11	WAS SF 003	16	WASHER, SQUARE, FLAT, 3 IN., FOR 3/4 IN. DIA. BOLT
12	WAS SP 002	2	WASHER, SPRING, DOUBLE HELIX, FOR 3/4 IN. DIA. BOLT

## VB20-5

### TAP – UNSHIELDED

OPTIONS: 6CU, 4CU, 2CU, 1/0CU, 2, 1/0

BOLT PLATE: NONE



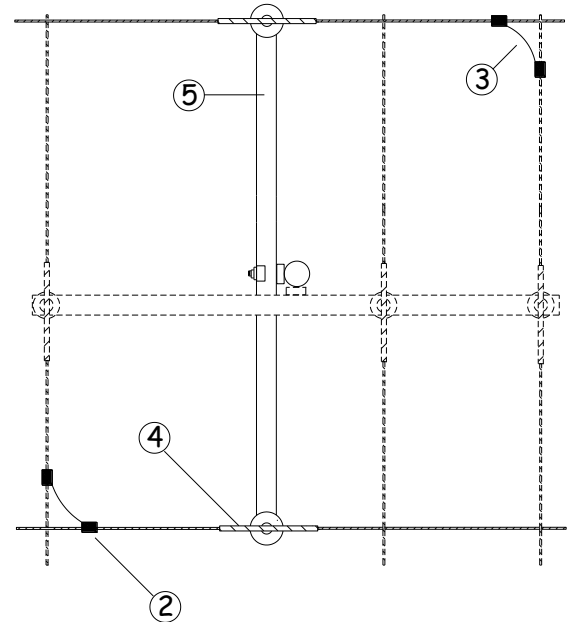
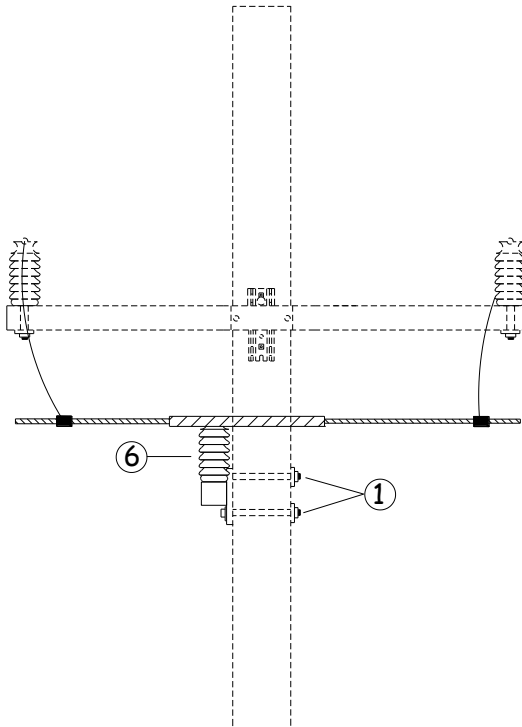
NO.	ITEM ID	QTY	DESCRIPTION
1	BOL DA 021	2	BOLT, DOUBLE ARMING, 3/4X26
2	BOL MS 037	2	BOLT, MACHINE, 3/4X16
3	CLA SS ***	2	GENERAL CODE FOR STRAIGHT STRAIN CLAMP
4	CNN ** ***	2	GENERAL CODE FOR CONNECTOR
5	COB ** ***	8	GENERAL CODE FOR TIE WIRE
6	CXA FG 001	1	CROSSARM, FIBERGLASS DEADEND, 3 5/8" X 4 5/8" X 10", 63 LBS
7	INS CO 001	2	INSULATOR, DEADEND, POLYMER, 27KV
8	INS VP 001	1	INSULATOR, VERTICAL POST, 34.5KV
9	NUT EY 003	2	NUT, EYE 3/4
10	STU LI 003	1	STUD, LINE POST, 3/4 IN. DIA. HEAD, 3/4 IN. DIA. X 7 IN. SHANK
11	WAS RD 005	2	WASHER, ROUND, 2 IN., FOR 3/4 IN. DIA. BOLT
12	WAS SF 003	12	WASHER, SQUARE, FLAT, 3 IN., FOR 3/4 IN. DIA. BOLT
13	WAS SP 002	2	WASHER, SPRING, DOUBLE HELIX, FOR 3/4 IN. DIA. BOLT

## VB22-5

0 TO 5 DEGREE ANGLE – UNSHIELDED

OPTIONS: 6CU, 4CU, 2CU, 1/0CU, 2, 1/0

BOLT PLATE: NONE



NO.	ITEM ID	QTY	DESCRIPTION
1	BOL MS 021	2	BOLT, MACHINE, 5/8X16
2	CNN ** ***	6	GENERAL CODE FOR CONNECTOR
3	COB CO ***	24	GENERAL CODE FOR CONDUCTOR
4	COB TW 005	12	CONDUCTOR, EC GRADE 4AAC
5	CXA FG 002	1	CROSSARM, FIBERGLASS TANGENT, 3 5/8" X 4 5/8" X 10', 39 LBS
6	INS VP 001	3	INSULATOR, VERTICAL POST, 34.5KV
7	STU LI 003	3	STUD, LINE POST, 3/4 IN. HEAD, 3/4 IN. DIA. X 7 IN. SHANK
8	WAS RD 004	2	WASHER, ROUND, 1-3/4 IN., FOR 5/8 IN. DIA. BOLT
9	WAS RD 005	8	WASHER, ROUND, 2 IN., FOR 3/4 IN. DIA. BOLT
10	WAS SF 003	6	WASHER, SQUARE, FLAT, 3 IN., FOR 3/4 IN. DIA. BOLT
11	WAS SP 001	2	WASHER, SPRING, DOUBLE HELIX, FOR 5/8 IN. DIA. BOLT
12	WAS SP 002	2	WASHER, SPRING, DOUBLE HELIX, FOR 3/4 IN. DIA. BOLT