

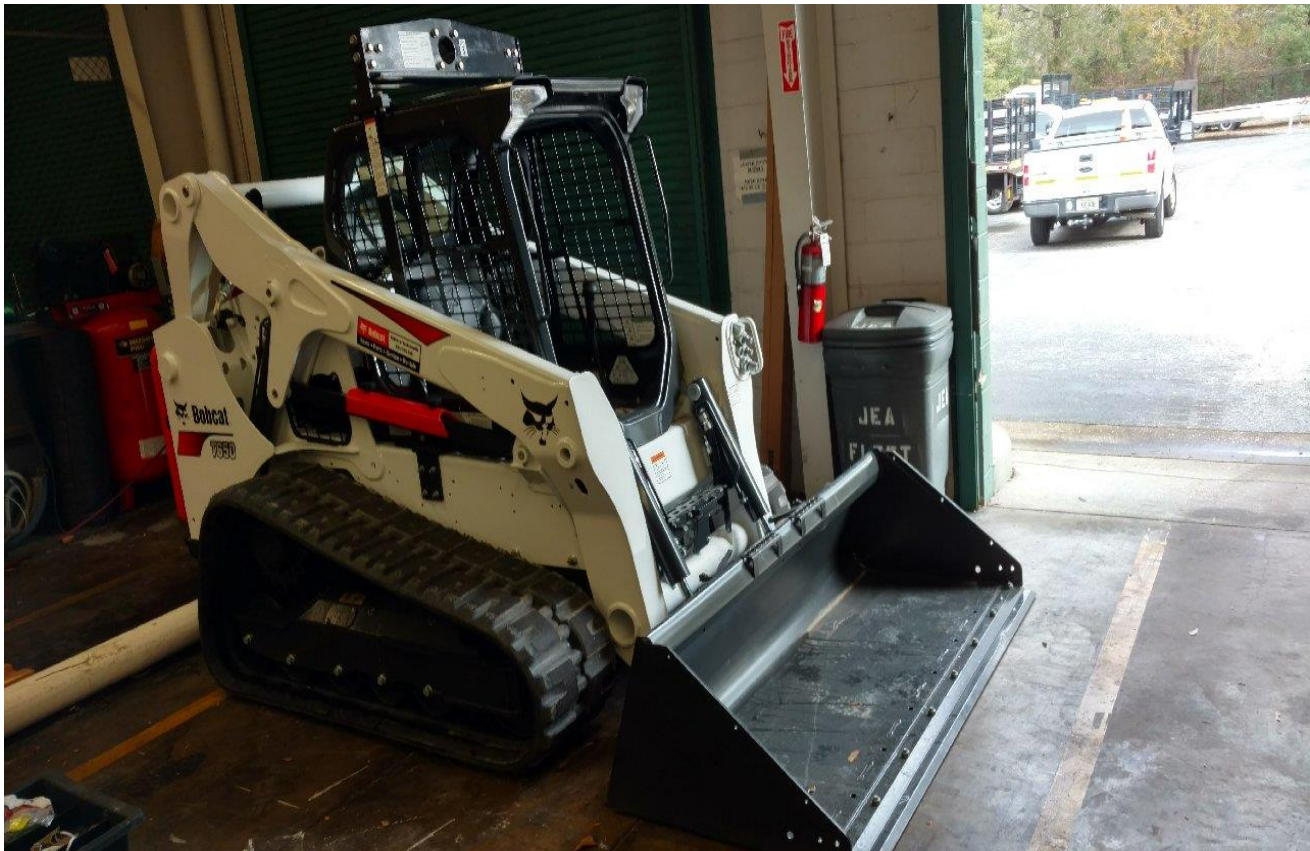
SPECIFICATION, JEA CLASS 322T SKID STEER TRACK LOADER with REMOTE CONTROL OPTION
(9,200 LB Unit)
UPDATED MAY 2019

1. SCOPE

It is the intent of the JEA to purchase **(1) ONE 9,200 LB SKID STEER TRACKED LOADER** with **WIRELESS REMOTE CONTROLS**. Unit must be tested and delivered to the JEA Fleet Facility (5717 New Kings Road Jacksonville, Florida 32209) in complete operational condition, with all required equipment and documentation by **September 25, 2019. Liquidated Damages (\$300.00 per day) Starting September 25, 2019.**

2. MODEL

New Current Model Year **SKID STEER TRACKED LOADER** with **WIRELESS REMOTE CONTROL** (BOBCAT T650 with Joystick Controls and Wireless Remote Controls or Equal), Single Vertical Lifting Point, 80" Low Profile Bucket with Bolt On Cutting Edge and all Plumbing, Controls and Weldments/Brackets for Other Attachments (Hydraulic Ram and).



3. CAB

- 3.1 OSHA Certified ROPS / OPG Enclosed Air Conditioned Cab (Cooling & Heat), with Suspension Seat and Seatbelt.

4. JOY STICK CONTROLS / WIRELESS REMOTE CONTROL WITH CHARGER

- 4.1 Joystick Cab Controls: Ergonomic & readily accessible from the operator seat.

SPECIFICATION, JEA CLASS 322T SKID STEER TRACK LOADER with REMOTE CONTROL OPTION

(9,200 LB Unit)

UPDATED MAY 2019

4.2 **Wireless Remote Controller with Battery Charger and All Required Hardware and Software:** Portable controller with shoulder strap, guard and emergency stop switch. Function requirements are drive, lift, tilt, auxiliary hydraulics etc.

4.3 Switchable Controls Option

5. BUCKET

5.1 BUCKET (QUICK COUPLER)

- **80"** Quick Coupler Low Profile Bucket with replaceable bolt on cutting edge.
- Hydraulic Bucket Positioning

6. VANDALISM PROTECTION

6.1 **Locking Caps/Compartments:** Required for battery, fuel, hydraulic oil, engine oil, coolant reservoirs etc.

6.2 Three (3) complete sets of keys per unit (Including Attachments, Bins & Tool Boxes). Key bins & tool boxes alike. **Stamp/Engrave JEA PROVIDED 5 Digit Unit Number on all KEYS.** If not able to stamp keys, provide a Brass Key Tag.

12. ENGINE (DIESEL)

12.1 **Four Cylinder:** Liquid Cooled with minimum 74 GROSS HP.

12.2 **Diesel Exhaust Fluid:** NO DEF.

12.3 **ANTI FREEZE:** Extended Life, Highest Quality Available with Corrosion Protection.

12.4 **Exhaust with Spark Arrester:** Include rain cap if required.

12.5 **AIR CLEANER:** Dry type with service indicator.

7. ELECTRICAL SYSTEM

7.1 Twelve Volt System.

7.2 Electric tachometer and fuel shutoff.

7.3 Safety start device.

8. FUEL TANK

8.1 **Capacity:** Minimum **43** gallons with operator station fuel gauge.

9. OTHER PERFORMANCE REQUIREMENTS

9.1 Operating Capacity: Minimum **2,570 LB**

9.2 Tipping Load: **7,443 LB** or Greater

9.3 Ground Pressure: Not to Exceed **5.7 PSI**

SPECIFICATION, JEA CLASS 322T SKID STEER TRACK LOADER with REMOTE CONTROL OPTION
(9,200 LB Unit)
UPDATED MAY 2019

- 9.4 Turning Radius: **87.7"** or Less
- 9.5 Bucket Breakout Force: Minimum **6,950 LBS**
- 10. TRACKS (RUBBER)**
 - 10.1 Track Width: Between 17.5" and 17.7"
 - 10.2 Track Length: Not to Exceed 59"
- 11. TRAVEL SPEED (TWO SPEED)**
 - 11.1 Low Speed: Between 6 MPH and 7 MPH
 - 11.2 High Speed: Between 9 MPH and 10 MPH
- 12. HEIGHT, LENGTH, WIDTH (Stowed/Transport Position) and REACH**
 - 12.1 Overall Height: Not to Exceed **82"**.
 - 12.2 Overall Length without Attachments: Not to Exceed **109"**.
 - 12.3 Overall Length with Standard Bucket Attachment: Not to Exceed **137"**.
 - 12.4 Overall Width with 80" Low Profile Bucket: Not to Exceed **80"**.
 - 12.5 Reach (Lift/Dump): Minimum **34"**
- 13. HYDRAULIC SYSTEM**
 - 13.1 Hydraulic Pressure: **3500 PSI at Quick Coupler.**
 - 13.2 Auxiliary High Flow: Minimum **30.5 GPM.**
- 14. WEIGHT**
 - 14.1 **OPERATING WEIGHT: Between 9,100 LBS and 9,500 LBS. USING MANUFACTURER'S STANDARD COUNTER WEIGHT. NO OPTIONAL COUNTERWEIGHT SHALL BE USED IN ORDER TO BRING THE MACHINE TO THE MINIMUM WEIGHTS SPECIFIED.**
- 15. ADDITIONAL REQUIRED EQUIPMENT / OPTIONS**

If not furnished as standard equipment/options, the following items shall be furnished, installed and included in the bid price

 - 15.1 Oil pressure, engine temperature, hydraulic temperature and charging indicator or gauges in cab.
 - 15.2 LED Work Light Package: 2 front mounted and 2 rear mounted on upper corners of cab.
 - 15.3 Hydraulic system temperature warning light.
 - 15.4 Enclosed Conditioned Cab: Cooling & Heating.

SPECIFICATION, JEA CLASS 322T SKID STEER TRACK LOADER with REMOTE CONTROL OPTION
(9,200 LB Unit)
UPDATED MAY 2019

- 15.5 Auxiliary Hydraulics, Attachment Combination Kit: INCLUDE ALL Plumbing & Controls for Hydraulic Attachments and Dripless Quick Connect Couplings for a Handy Ram Etc.
- 15.6 Back Up Camera (Night Vision) with Travel Alarm.
- 15.7 Vertical Lifting Point: Used to allow a crane to lift/position unit in elevated and below ground work areas.
- 15.8 **MASTER SWITCH WITH LOCKOUT/TAGOUT:**



16. TRAINING / ORIENTATION, MANUALS & DOCUMENTATION

- 16.1 Must provide TWO (2) onsite JEA Operator Orientation Training Sessions.
- 16.2 Must provide ONE (1) onsite JEA Maintenance Training Session.
- 16.3 Must include ONE (1) operator manual per unit (Hard Copy).
- 16.4 Must include a paper copy Specification / Build Sheet with all units. Or, an electronic copy.
- 16.5 Must include/document the **Vin Number, Make, Model Description, JEA PO #** and **JEA Provided 5 Digit Unit #** on all Invoices.
- 16.6 Must include a **Current Inspection / Service** with **Decal** installed lower left inside corner of front glass. Decal must include current hours, current Inspection date, next service due date and next service due hours.

17. COLOR/GRAPHICS

- 17.1 Manufacturer's standard color.
- 17.2 Delete all vendor and manufacturer identification decals **except required** safety & reference identification tags, decals, data plates & placards.

SPECIFICATION, JEA CLASS 322T SKID STEER TRACK LOADER with REMOTE CONTROL OPTION
(9,200 LB Unit)
UPDATED MAY 2019

18. WARRANTEE

- 18.1 TWO (2) Year or 2000 Hour Full Machine Warranty including Parts, Travel Time, Transport and Mileage. Must include and list all Standard Manufacturer's Warranties. Include and list all Standard Component Warranties.
- 18.2 Warranty period starts when units received at the JEA Fleet Facility, Inspected and Accepted.

19. PARTS AVAILABILITY

- 19.1 Engine Oil Filters, Hydraulic Filters, Tracks, Sprockets, Pins, Rollers & Etc. must be readily available within 48 hours.
- 19.2 Awarded Vendor must have a Facility located in the JEA Service Area. The Vendor must be certified to perform Preventive maintenance, repairs and warranty repairs on the equipment.

NOTE: All Units, Attachments, Products & Services must meet & comply with all applicable regulations and specifications including but not limited to Federal and State Laws, OSHA Regulations, ANSI Standards, DOT Regulations and ASTM Standards. All Units must be delivered to the JEA Fleet Facility with a minimum $\frac{3}{4}$ tank of fuel. Contact **Mark Murray** at **904-328-8501** 48 Hours prior to delivery. Delivery times are **Monday** through **Friday 08:00 AM – 03:00 PM** at **5717 New Kings Road Jacksonville Florida, 32209.**