

Appendix A Technical Specifications

97294: 7200 AC Skinner Lift Station Fiber Build

JEA DOCUMENT REFERENCES

All construction work shall be completed in accordance with details and specifications contained in the documents listed below. These documents can be found on www.jea.com at Working with JEA / Engineering and Construction / Reference Materials / Reference Materials. JEA Contractors are required to fully understand and comply with these specifications.

- A. Fiber Optic Cable Standards – Latest Edition
- B. Underground Distribution Construction Standards – Latest Edition
- C. Overhead Distribution Construction Standards – Latest Edition

AS-BUILT/POST CONSTRUCTION/POST SPLICING DOCUMENTATION REQUIRED:

- 1) Contractor shall mark up supplemental project drawings, site plans, overhead installation and underground installation and submit on supplied drawings to JEA in an as built format.
- 2) Contractor shall provide electronic and hard copies of fiber optic testing documentation before and after installation.
- 3) Contractor shall perform bi-directional tests with a JEA approved OTDR/software package NetTest or EXFO from patch panel to patch panel.
- 4) Contractor shall perform bi-directional tests for Optical Return Loss with a JEA approved power meter and light source on terminated fibers from patch panel to patch panel.
- 5) Contractor shall provide electronic and hard copies of fiber optic testing documentation before and after splicing.

Scope of Work for Fiber Installation and Splicing

1. The JEA contractor shall perform a pre-construction test of the new fiber cable (CAIUF0144) to insure its integrity prior to installation.
2. All underground construction will include conduit(s) as designed, a locate wire (#12 minimum solid), fiber route cove markers, and fiber optic vaults, as indicated on the construction drawings.
3. The Contractor will perform post construction fiber integrity testing. The Contractor will inform JEA the fiber plant is ready for pre splicing inspection. JEA will inspect the completed fiber plant construction within ten working days after the Contractor informs JEA that it is ready for inspection. Upon acceptance by JEA of the fiber, plant construction the Contractor will begin fiber splicing, post splicing testing and documentation.
4. The JEA Contractor shall identify and tag all exposed project related fiber cables within the project area with JEA provided tags.

Scope of Work

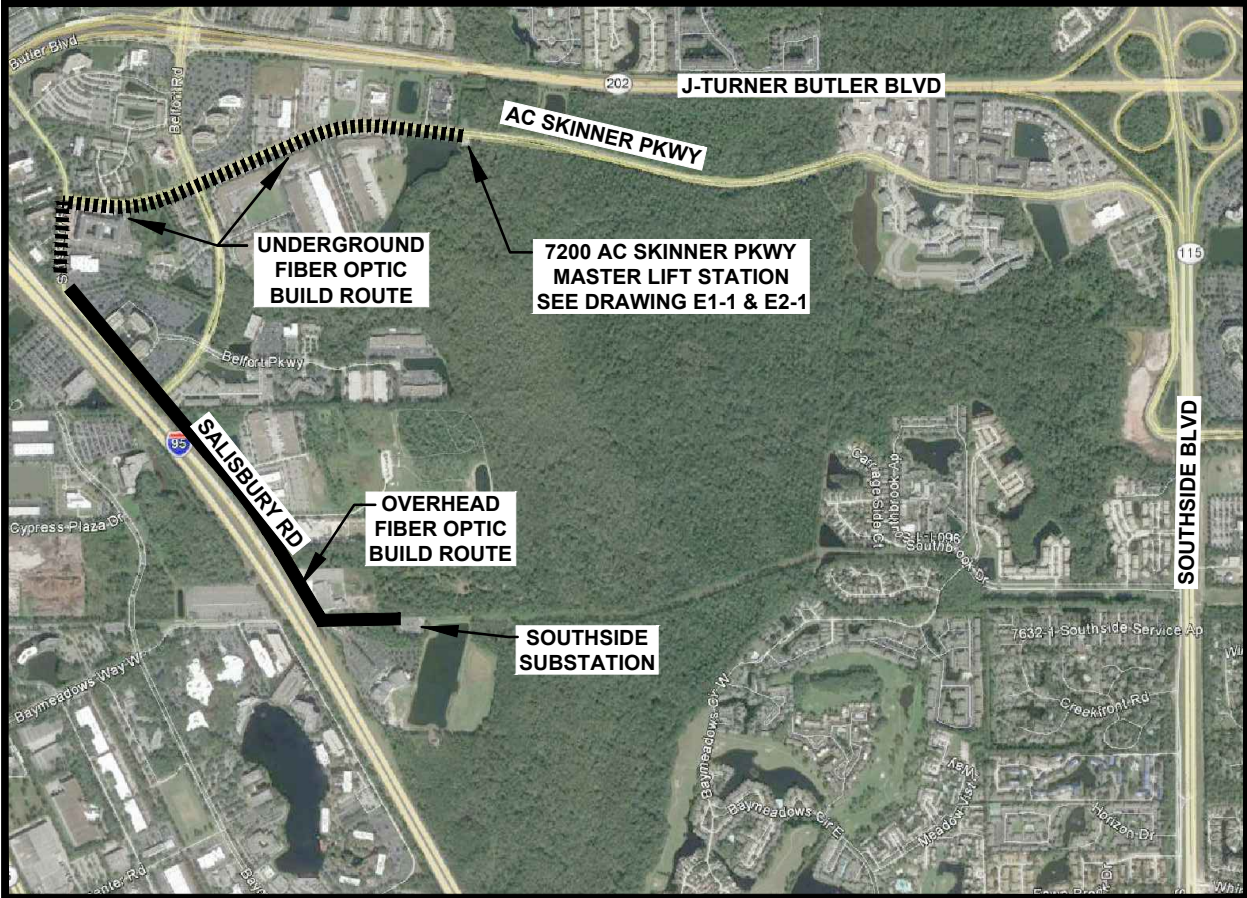
1. Directional Drill along AC Skinner Parkway starting at 7200 AC Skinner Master Lift Station to the corner of Salisbury Rd and along Salisbury Rd.
2. Install JEA furnished handhole according to the drawing, some adjustments may be necessary.
3. Pull approximately 5280ft of 144ct fiber. The print calls for a 48 count fiber but replaced with a 144 count fiber.
4. Install riser pole and pull fiber into substation
5. On site design and build into 7200 AC Skinner MLS
 - a. Furnish and install approximately 75ft of 2' conduit
 - b. Furnish and install Nema Cabinet on outside building per drawings
 - c. Install Rack in control building
6. Furnish and install patch panel and terminate 12 fibers in AC Skinner Control room
7. Terminate 12 fibers and install contractor supplied patch panel in existing rack inside Southside Substation
8. Label all fiber terminations and provide as-build per JEA Standards
9. Install new ARC conduit from existing power panel to new cabinet. Install (2) new 120v/20amp

JEA shall provide the following:

1. 144 count single mode fiber.
2. Fiber route markers, fiber optic vaults and hand holes.
3. Maps, plans, drawings, design specifications and permits.

Contractor shall provide:

1. All equipment, tools and work force.
2. All consumables and other materials needed for the underground construction.
3. All conduit, inner ducts and locate wire.
4. All splicing and consumables.



THE IMAGE USED IS WITH THE EXPRESSED WRITTEN PERMISSION FROM GOOGLE INCORPORATED © 2018 GOOGLE

PROJECT LOCATION MAP

NOT TO SCALE



JEA - FIBER BUILD PROJECT

7200 AC SKINNER PKWY MASTER LIFT STATION

B&V PROJECT 400479

PROJECT DRAWING LIST

SHEET COUNT	DRAWING NUMBER	DRAWING TITLE
1 OF 15	E0-1	LOCATION MAP, & DESCRIPTION OF WORK
2 OF 15	E0-2	TYPICAL DETAILS AND NOTES
3 OF 15	E0-2A	TYPICAL DETAILS
4 OF 15	E0-2B	TYPICAL HDD DETAILS AND NOTES
5 OF 15	E0-3	LEGEND, CONSTRUCTION & GENERAL NOTES
6 OF 15	E1-1	FIBER OPTIC ROUTING PLAN
7 OF 15	E1-2	FIBER OPTIC ROUTING PLAN
8 OF 15	E1-3	FIBER OPTIC ROUTING PLAN
9 OF 15	E1-4	FIBER OPTIC ROUTING PLAN
10 OF 15	E1-5	FIBER OPTIC ROUTING PLAN
11 OF 15	E1-6	FIBER OPTIC ROUTING PLAN
12 OF 15	E1-7	FIBER OPTIC ROUTING PLAN
13 OF 15	E1-8	FIBER OPTIC ROUTING PLAN
14 OF 15	E2-1	7200 AC SKINNER PKWY ENLARGED PLAN
15 OF 15	E2-2	SOUTHSIDE SUBSTATION ENLARGED PLAN

DESCRIPTION OF WORK:

- PROJECT OBJECTIVE TO UPGRADE JEA'S FIBER OPTIC COMMUNICATION SYSTEM. THIS ROUTE REQUIRES THE INSTALLATION OF NEW UNDERGROUND CONDUIT AND ATTACHING TO EXISTING DISTRIBUTION AND TRANSMISSION POLES. FROM THE MASTER LIFT STATION ON AC SKINNER PARKWAY RUNNING ALONG THE SOUTH RIGHT-OF-WAY, WEST TO TO SALISBURY RD. CONVERTING TO OVERHEAD INSTALLATION THEN ALONG THE WEST SIDE OF SALISBURY ROAD TO THE TRANSMISSION EASEMENT LEADING INTO THE SOUTHSIDE SUBSTATION AND THE CONTROL BUILDING.
- CONTRACTOR SHALL INSTALL OWNER FURNISHED FIBER OPTIC CABLE IN EXISTING CONDUITS AND MANHOLES ALONG THE ROUTE ADDING CONDUIT AND FIBER OPTIC MANHOLES WHERE NECESSARY. UNDERGROUND INSTALLATION MAY INCLUDE HAND DIGGING, TRENCHING AND HORIZONTAL DIRECTIONAL DRILLING (HDD).
- INSTALLATION METHODS WILL INCLUDE BUT NOT LIMITED TO HDD AND TRENCHING MACHINES, CABLE DOLLY TRUCKS, AND SUPPORT VEHICLES.

2018-2019 FDOT DESIGN STANDARDS ATTACHED FOR REFERENCE ONLY

NOTE: THE CONTRACTOR IS RESPONSIBLE FOR VERIFYING AND COMPLYING WITH NECESSARY STANDARDS

DESIGN STANDARDS INDEX	STANDARD PLANS INDEX	NUMBER OF SHEETS	INDEX TITLE
600	102-600	12	GENERAL INFORMATION FOR TRAFFIC CONTROL THROUGH WORK ZONES
601	102-601	1	TWO-LANE, TWO-WAY, WORK OUTSIDE SHOULDER
602	102-602	1	TWO-LANE, TWO-WAY, WORK ON SHOULDER
603	102-603	3	TWO-LANE, TWO-WAY, WORK WITHIN THE TRAVEL WAY
604	102-604	1	TWO-LANE, TWO-WAY, WORK IN INTERSECTION
605	102-605	1	TWO-LANE, TWO-WAY, WORK NEAR INTERSECTION
611	102-611	1	MULTILANE, WORK OUTSIDE SHOULDER
612	102-612	1	MULTILANE, WORK ON SHOULDER
613	102-613	2	MULTILANE, WORK WITHIN THE TRAVEL WAY MEDIAN OR OUTSIDE LANE
615	102-615	1	MULTILANE, WORK IN INTERSECTION
616	102-616	3	MULTILANE, WORK NEAR INTERSECTION MEDIAN OR OUTSIDE LANE
625	102-625	1	TEMPORARY ROAD CLOSURE - 5 MINUTES OR LESS
660	102-660	1	PEDESTRIAN CONTROL FOR CLOSURE OF SIDEWALKS
670	102-670	1	MOTORIST AWARENESS SYSTEM

ESTIMATED MATERIAL QUANTITIES		
DESCRIPTION	LINEAR FEET	UNIT QUANTITY
24 COUNT FIBER OPTIC CABLE	9880'	NA
2" PVC CONDUIT	100'	NA
2" HDPE CONDUIT (HDD INSTALLATION)	3800'	NA
FIBER OPTIC MANHOLES	NA	5
FIBER OPTIC COTT MARKERS	NA	2
FIBER OPTIC CURB MARKERS	NA	5
FO-TX-RIS1C	NA	1
FO-RIS1W	NA	1
FO-A	NA	1
FO-CS (AERIAL STORAGE)	NA	2
FO-T	NA	15
FO-TX-DDE	NA	1

NOTE: CABLE LENGTH ESTIMATE INCLUDES OVERHEAD AND MANHOLE STORAGE ONLY.

CONTACTS

PROJECT MANAGER: GREG RAGER
(904) 665-8136

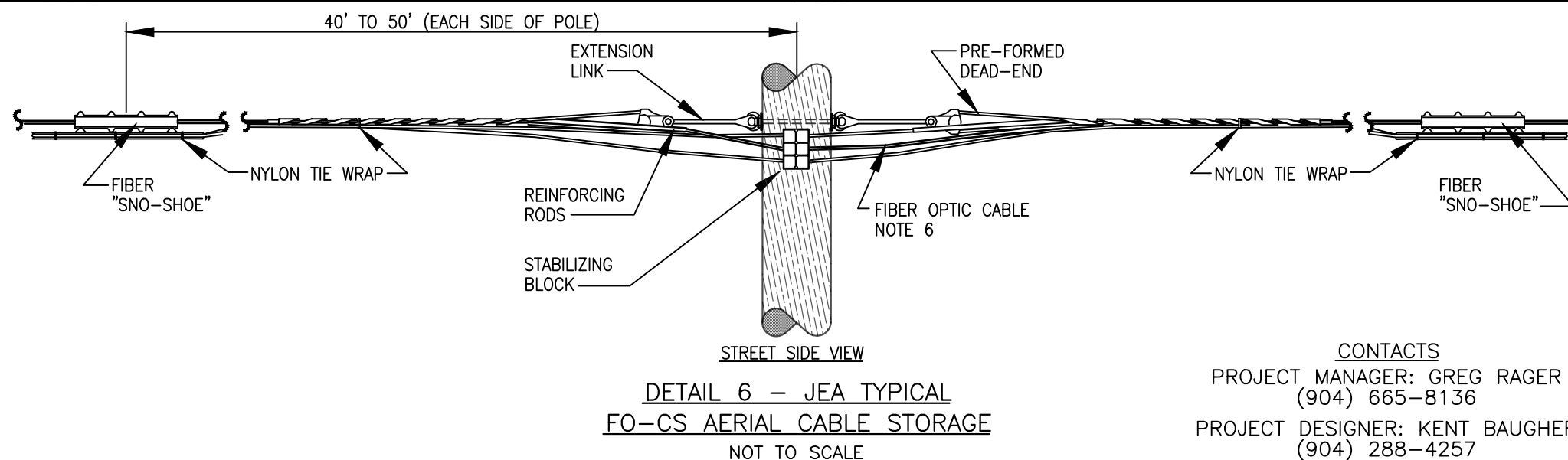
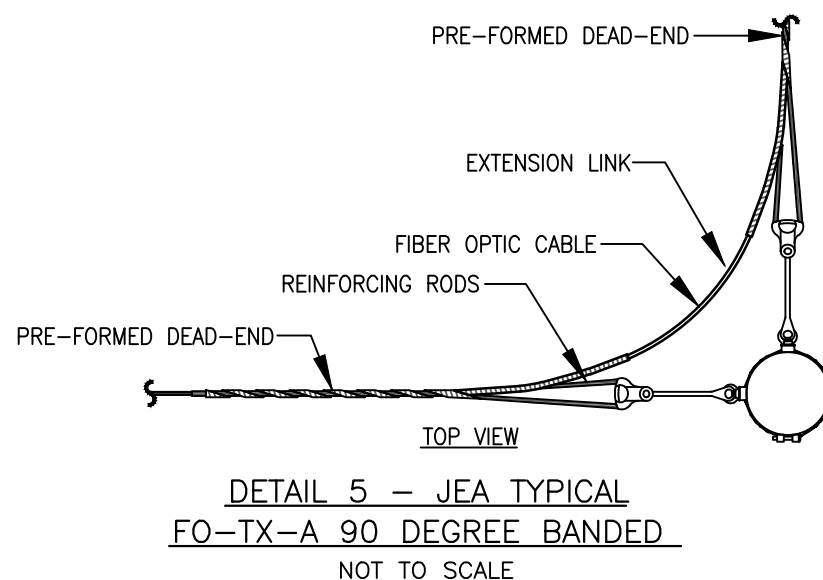
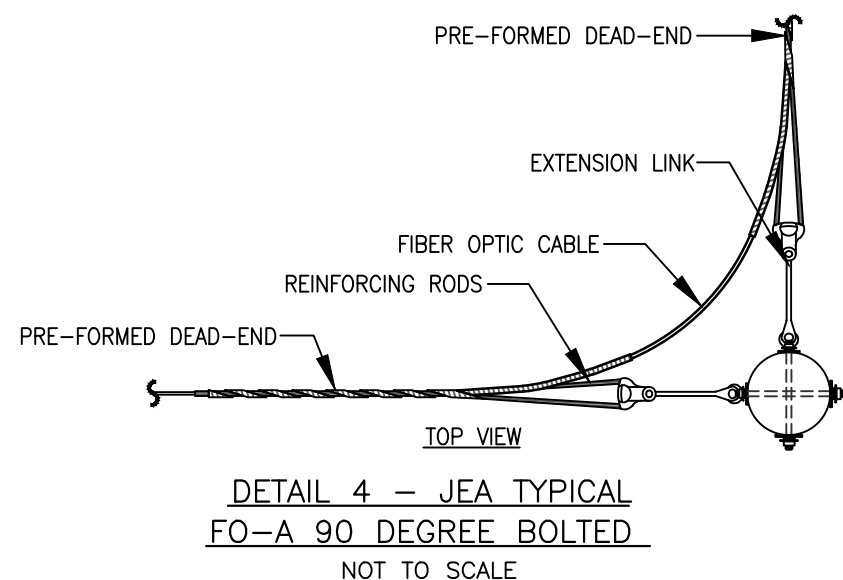
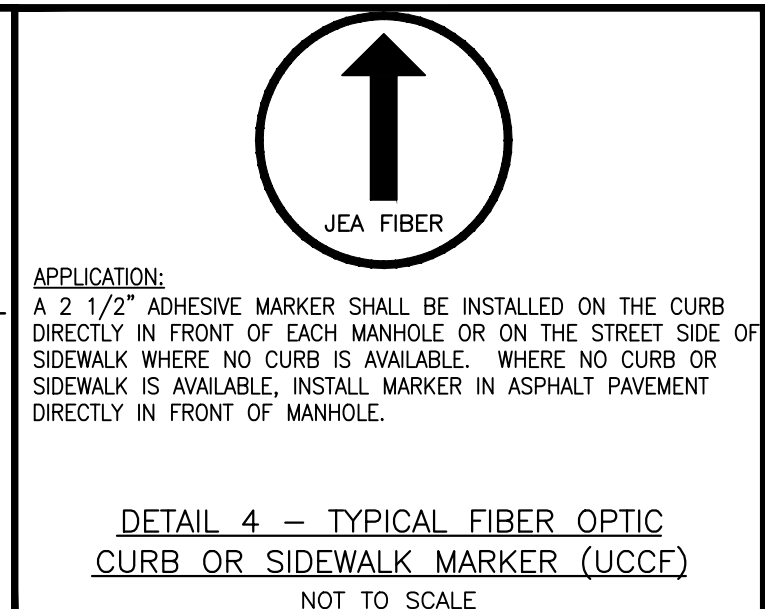
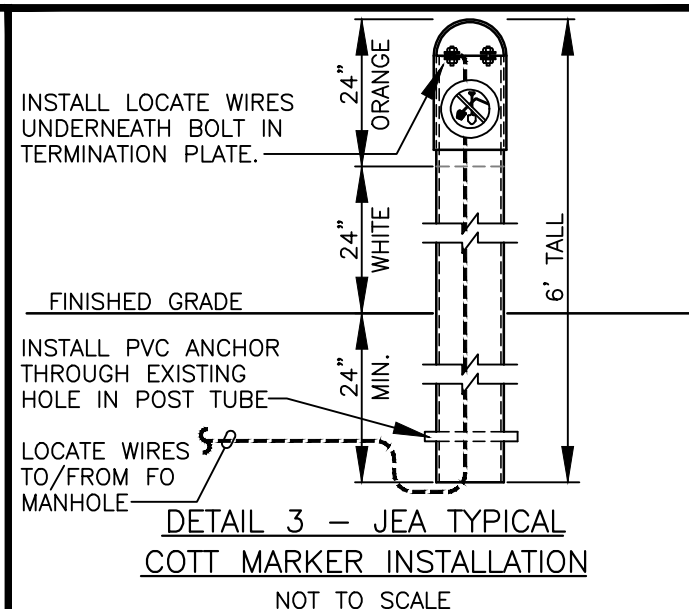
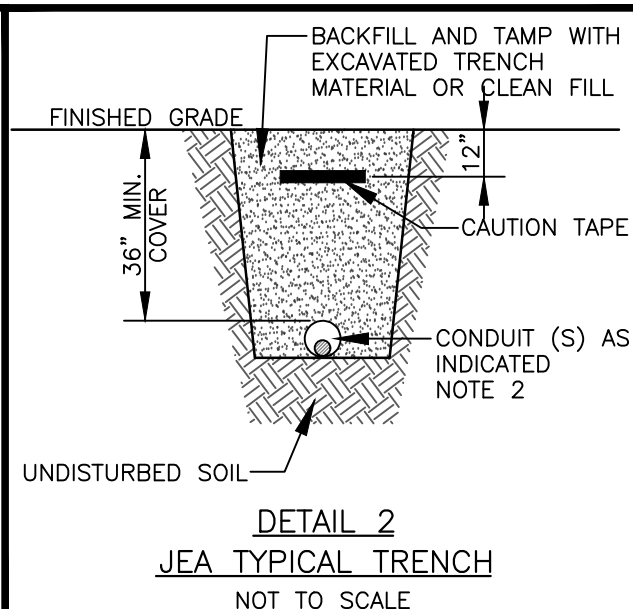
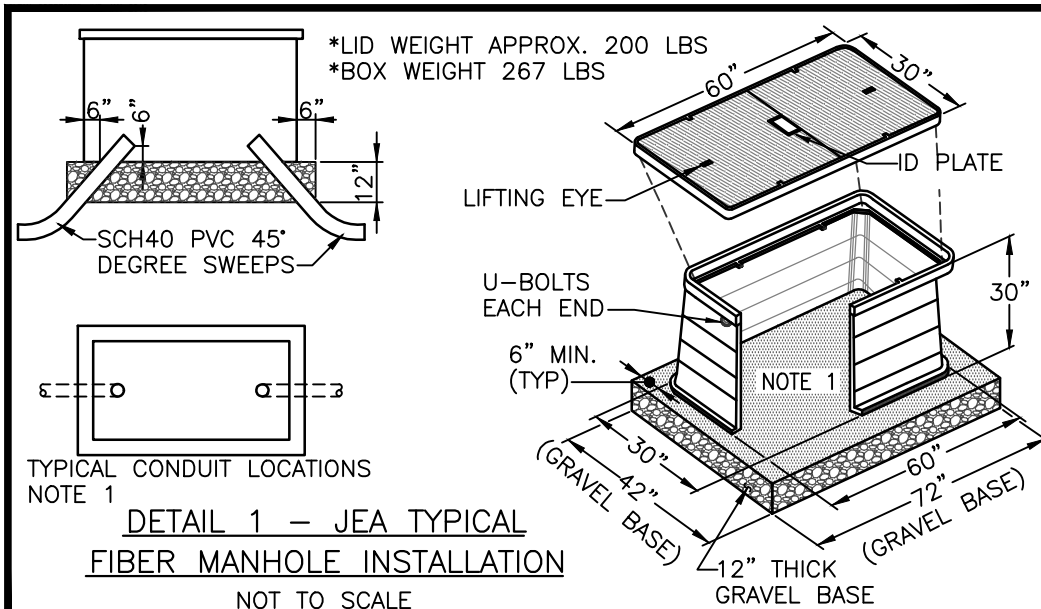
PROJECT DESIGNER: KENT BAUGHER
(904) 288-4257

APPROVED FOR
CONSTRUCTION

THE DISTRIBUTION AND USE OF THE NATIVE FORMAT CAD FILE OF THIS DRAWING IS UNCONTROLLED. THE USER SHALL VERIFY TRACEABILITY OF THIS DRAWING TO THE LATEST CONTROLLED VERSION.



NO	REVISION DESCRIPTION	BY	DATE	ENGINEER: -	PAGER #	RADIO #	PHONE #	ENGINEERING RECORD			7200 AC SKINNER PARKWAY - MLS			PROJ PHASE
0	APPROVED FOR CONSTRUCTION	JKB	09/JAN/19			4.16 kV	13.2 kV	26.4 kV		BY	DATE	FIBER OPTIC BUILD		0050
				SUBSTATION NAME		00479			DRAWN BY:	JKB	NOV/18	LOCATION MAP, & DESCRIPTION OF WORK		PROJ NO.
				CIRCUIT NUMBER/S					DESIGNED BY:	JKB	NOV/18			400479
				SWITCH MAP NUMBER/S					CHECKED BY:			DWG SCALE:		DRAWING NO.
				OVERHEAD MAP NUMBER/S					APPROVED BY:			AS_INDICATED		E0-1
									APPROVED FOR CONST BY:			JEA BUILDING COMMUNITY JACKSONVILLE, FLORIDA		SHEET CNT
												TECHNOLOGY SERVICES		1 OF 15



- TYPICAL DETAIL NOTES:

1. INSTALL CONDUITS 6" FROM INSIDE WALL CENTERED ALONG THE LONG AXIS OF THE MANHOLE. STORE MINIMUM 150' COIL OF SLACK FO CABLE IN EACH MANHOLE.
2. INSTALL 2" HDPE SDR 13.5 OR ELECTRICAL PVC (SCH. 40) AS INDICATED. INSTALL FIBER CABLE AND 12G TRACER WIRE UNLESS SPECIFIED OTHERWISE. TRACER WIRE SHALL NOT EXTEND BEYOND THE PROTECTIVE FENCE AT SUBSTATIONS.
3. WHERE INDICATED, REPLACE BOTTOM LIGHT BRACKET BOLT WITH NEW ASSEMBLY BOLT WHEN LIGHT BRACKET IS PRESENT.
4. FIBER CABLE SHALL MAINTAIN GREATER THAN 2'-0" CLEARANCE FROM 26KV CONDUCTORS.
5. COVER RISER CONDUIT (S) WITH CABLE GUARD TO 10' ABOVE GRADE.
6. CONTRACTOR SHALL PROVIDE SLACK CABLE AS INDICATED ON DRAWINGS. FIELD VERIFY CABLE SAG AND RISER DROP/RETURN CABLE LENGTH BASED ON INSTALLED CONDITIONS.

APPROVED FOR
CONSTRUCTION

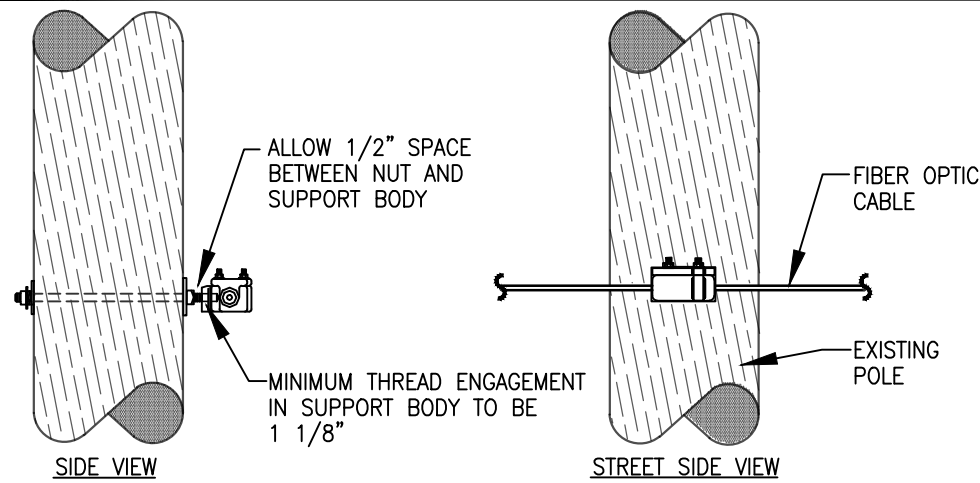
THE DISTRIBUTION AND USE OF THE NATIVE FORMAT CAD FILE OF THIS DRAWING IS UNCONTROLLED. THE USER SHALL VERIFY TRACEABILITY OF THIS DRAWING TO THE LATEST CONTROLLED VERSION.



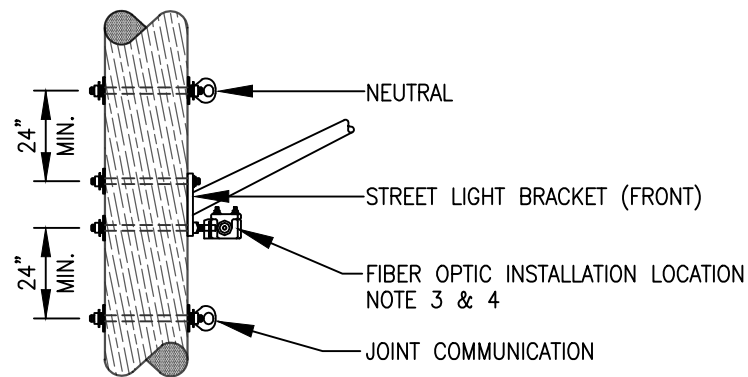
BLACK
&
VEATCH

12740 Gran Bay Parkway West
Suite 2140
Jacksonville, Florida 32258

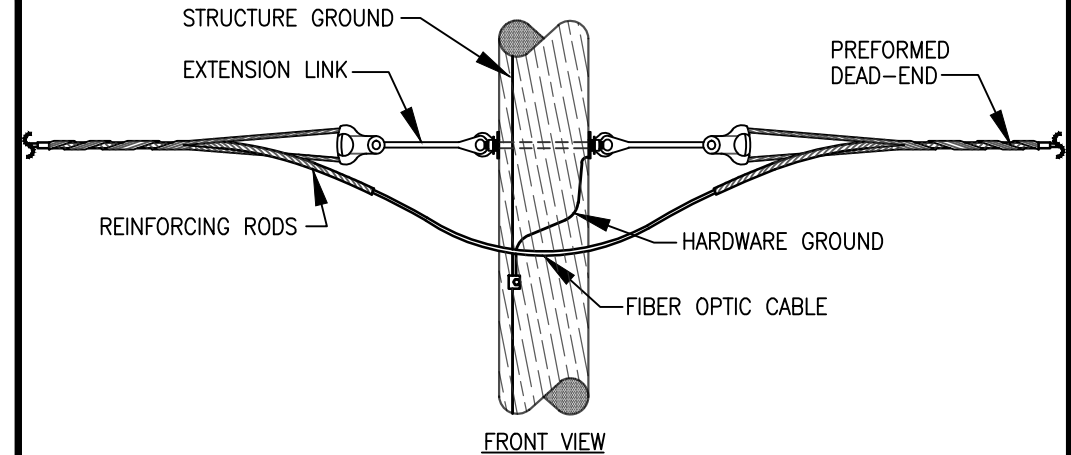
[illegible]



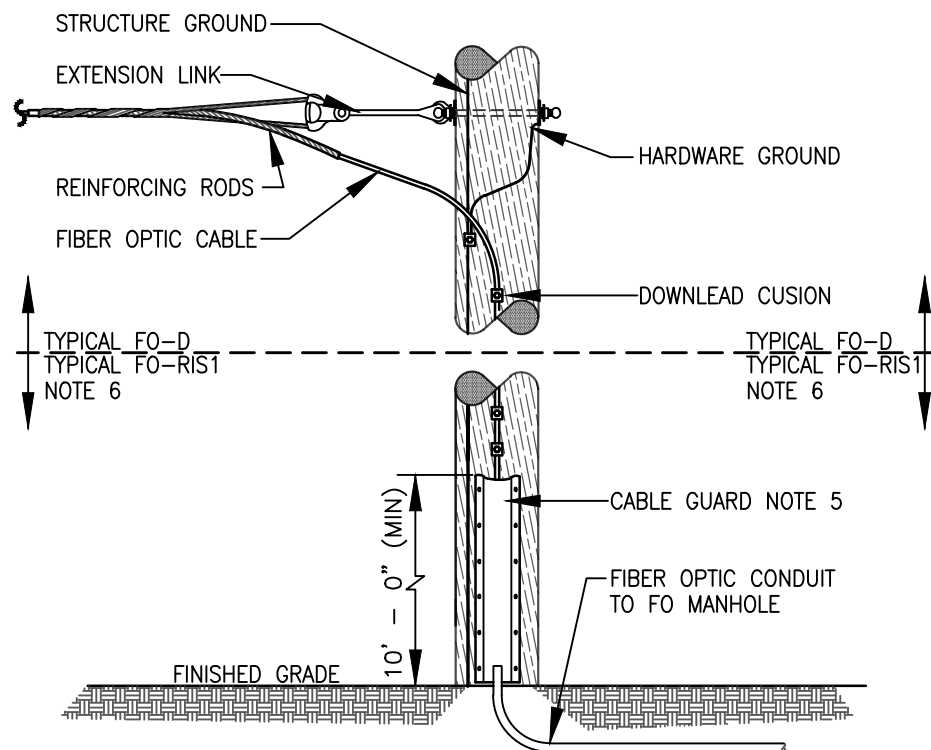
DETAIL 7 - JEA TYPICAL
FO-T (TANGENT)
NOT TO SCALE



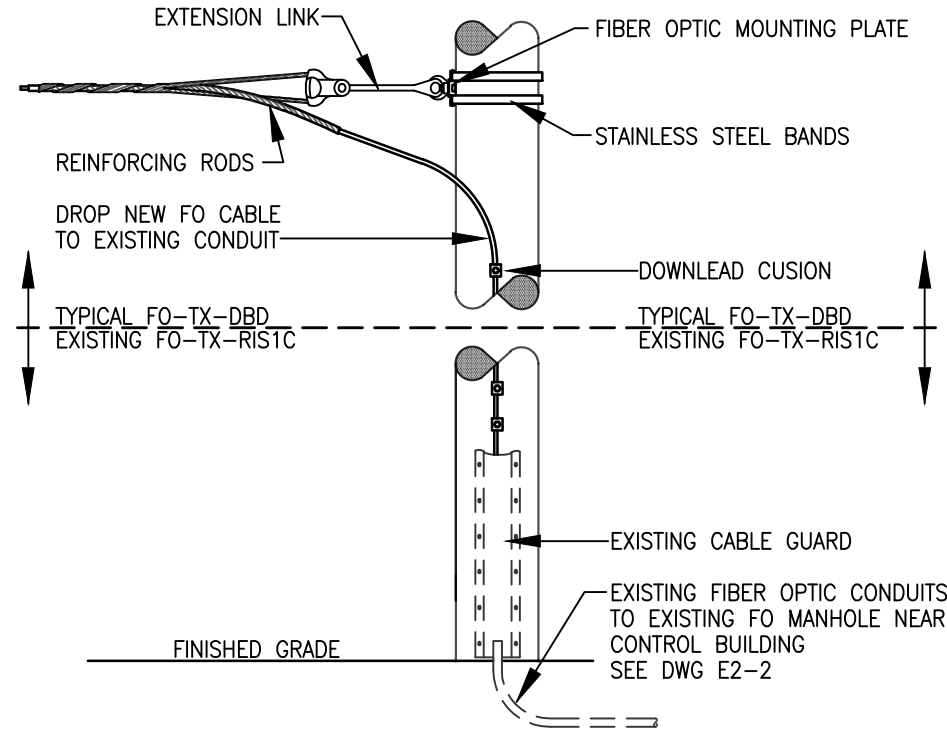
DETAIL 8 - JEA TYPICAL
FO-T (TANGENT) AT STREET LIGHT ASSEMBLY
NOT TO SCALE



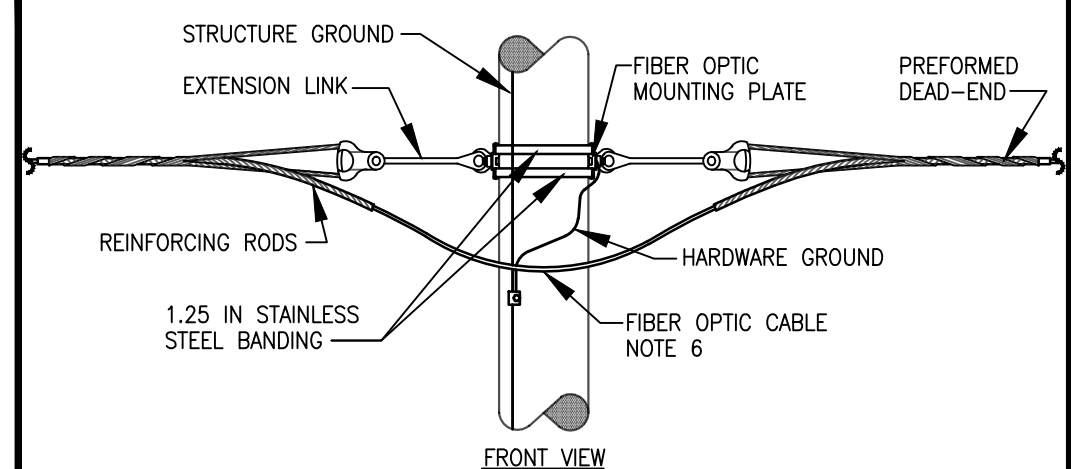
DETAIL 9 - JEA TYPICAL
FO-DDE DOUBLE DEAD END
NOT TO SCALE



DETAIL 10 - JEA TYPICAL FIBER OPTIC
OVERHEAD TO UNDERGROUND RISER
NOT TO SCALE



DETAIL 11 - JEA TYPICAL FIBER OPTIC OVERHEAD
TX DOUBLE DEAD END BANDED WITH EXISTING RISER
NOT TO SCALE



DETAIL 9A - JEA TYPICAL
FO-TX-DDEBD DOUBLE DEAD END BANDED
NOT TO SCALE

APPROVED FOR
CONSTRUCTION

THE DISTRIBUTION AND USE OF THE NATIVE FORMAT CAD FILE OF THIS DRAWING IS UNCONTROLLED. THE USER SHALL VERIFY TRACEABILITY OF THIS DRAWING TO THE LATEST CONTROLLED VERSION.

BLACK & VEATCH
12740 Gran Bay Parkway West
Suite 2140
Jacksonville, Florida 32258
CERTIFICATE OF AUTHORIZATION
NO. 8132

CONTACTS

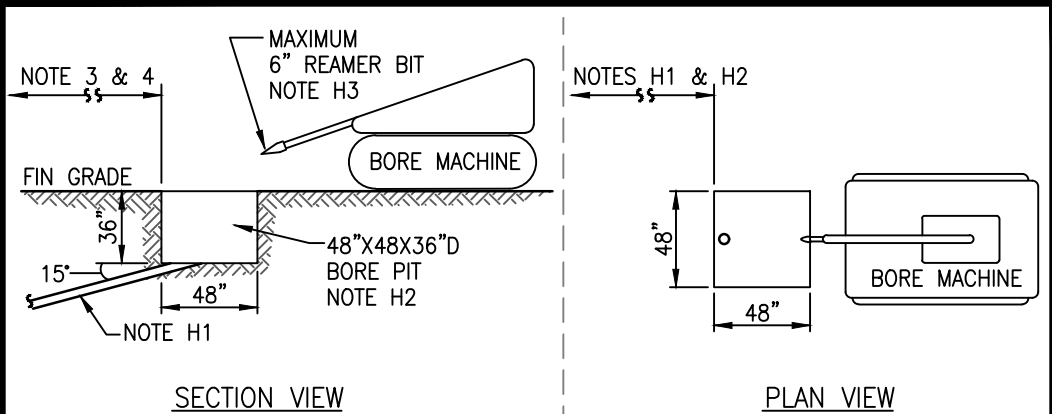
PROJECT MANAGER: GREG RAGER
(904) 665-8136

PROJECT DESIGNER: KENT BAUGHER
(904) 288-4257

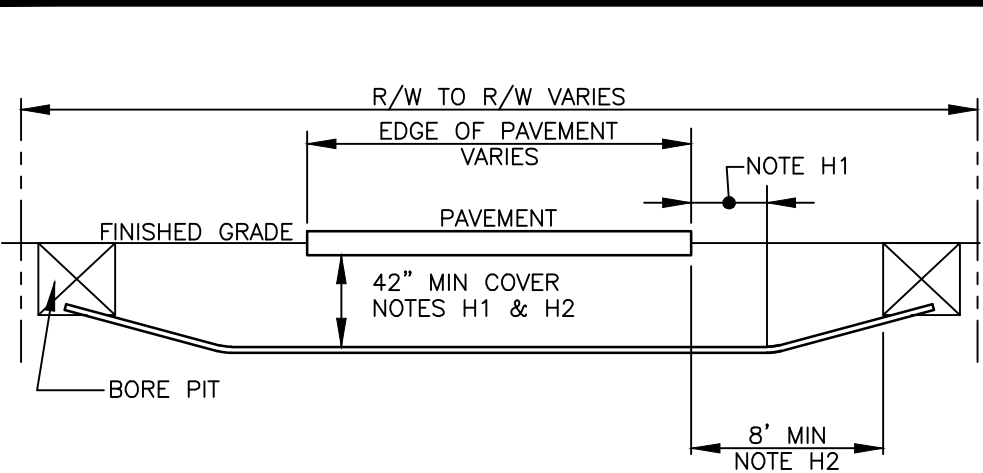
NO	REVISION DESCRIPTION	BY	DATE	ENGINEER: -	PAGER #	RADIO #	PHONE #	ENGINEERING RECORD	BY	DATE	7200 AC SKINNER PARKWAY - MLS	PROJ PHASE
0	APPROVED FOR CONSTRUCTION	JKB	09/JAN/19			4.16 kV	13.2 kV	26.4 kV			FIBER OPTIC BUILD	0050
				SUBSTATION NAME					DRAWN BY:	JKB	TYPICAL DETAILS	PROJ NO.
				CIRCUIT NUMBER/S					DESIGNED BY:	JKB		400479
				SWITCH MAP NUMBER/S					CHECKED BY:			DRAWING NO.
				OVERHEAD MAP NUMBER/S					APPROVED BY:			E0-2A
									APPROVED FOR CONST BY:			SHEET CNT
												3 OF 15

JEA
BUILDING COMMUNITY
JACKSONVILLE, FLORIDA

TECHNOLOGY
SERVICES

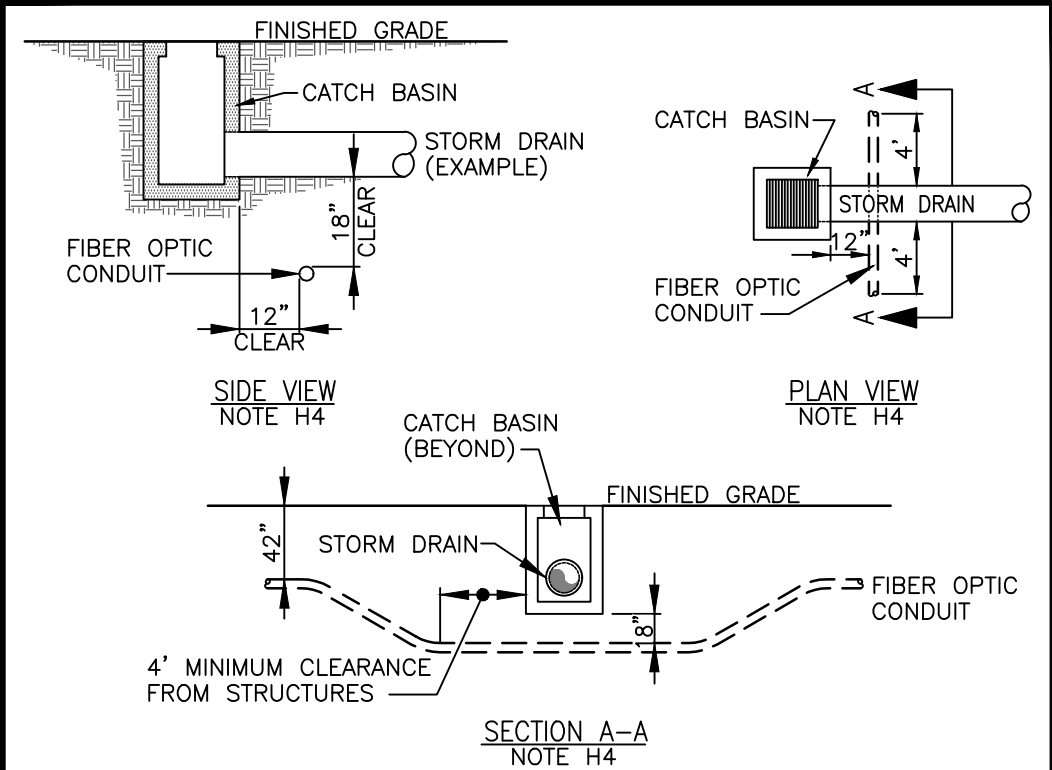


DETAIL 12 – TYPICAL HDD
BORE PIT AND MACHINE REQUIRMENTS
NOT TO SCALE



DETAIL 13 – TYPICAL HDD
PERPENDICULAR TO ROAD OR DRIVEWAY
NOT TO SCALE

- HDD DETAIL NOTES:
- H1. CONDUIT SHALL MAINTAIN 42" MINIMUM COVER FROM TOP OF CONDUIT TO BOTTOM OF PAVEMENT AT LEAST 5' BEYOND PAVEMENT FOR RESIDENTIAL DRIVEWAYS, AND AT LEAST 7' BEYOND EDGE OF PAVEMENT FOR LOCAL OR STATE ROADWAYS.
 - H2. BORE PITS MAY BE USED FOR FIBER OPTIC MANHOLE PLACEMENT AFTER CONDUIT IS RETRIEVED AND GRAVEL BASE IS INSTALLED. UNDER STATE ROADWAYS, BORE PITS SHALL BE NO LESS THAN 8' FROM EDGE OF PAVEMENT.
 - H3. BORE MACHINE REAMER BITS AND SIMILAR EQUIPMENT SHALL REMAIN ON SITE FOR INSPECTION FOR THE DURATION OF THE CONSTRUCTION PROJECT.
 - H4. WHERE UNDERGROUND FIBER OPTIC CONDUIT INTERSECTS EXISTING UTILITIES NOT PARALLEL WITH FIBER OPTIC CONDUIT:
BURIAL DEPTH OF FO CONDUIT SHALL INCREASE TO AT LEAST 18" COVER BELOW OTHER UTILITY FOR MINIMUM 48" BEYOND INTERSECTING AREA. EXCEPTIONS WILL BE CONSIDERED INDIVIDUALLY IF OTHER UTILITY ALLOWS FO CONDUIT TO MAINTAIN MIN. 36" COVER AND MINIMUM 18" COVER FROM TOP OF FO CONDUIT TO BOTTOM OF OTHER UTILITY PIPE. STRUCTURES SUCH AS CATCH BASINS SHALL NOT BE BORED UNDER WITHOUT PRIOR APPROVAL.




DETAIL 14 – MINIMUM CLEARANCE TO OTHER UTILITIES
NOT PARALLEL TO FIBER OPTIC CONDUIT
NOT TO SCALE

CONTACTS
PROJECT MANAGER: GREG RAGER
(904) 665-8136
PROJECT DESIGNER: KENT BAUGHER
(904) 288-4257

APPROVED FOR
CONSTRUCTION

THE DISTRIBUTION AND USE OF THE NATIVE FORMAT CAD FILE OF THIS DRAWING IS UNCONTROLLED. THE USER SHALL VERIFY TRACEABILITY OF THIS DRAWING TO THE LATEST CONTROLLED VERSION.

 **BLACK & VEATCH**
12740 Gran Bay Parkway West
Suite 2140
Jacksonville, Florida 32258
CERTIFICATE OF AUTHORIZATION
NO. 8132

REVISION DESCRIPTION				ENGINEERING RECORD				7200 AC SKINNER PARKWAY – MLS FIBER OPTIC BUILD TYPICAL HDD DETAILS & NOTES				PROJ PHASE	
0	APPROVED FOR CONSTRUCTION	JKB	09/JAN/19	ENGINEER: –	PAGER #	RADIO #	PHONE #	DRAWN BY:	BY	DATE	DWG SCALE:	0050	PROJ NO.
				SUBSTATION NAME		4.16 kV	13.2 kV	DESIGNED BY:	JKB	JAN/19	AS INDICATED	400479	DRAWING NO.
				CIRCUIT NUMBER/S				CHECKED BY:	JKB	JAN/19		E0-2B	SHEET CNT
				SWITCH MAP NUMBER/S				APPROVED BY:				4 OF 15	
				OVERHEAD MAP NUMBER/S				APPROVED FOR CONST BY:					

CONSTRUCTION NOTES:

1. CONTRACTOR IS RESPONSIBLE FOR LOCATING UTILITIES AT LEAST 72 HOURS PRIOR TO CONSTRUCTION ACTIVITY, USING FLORIDA ONE CALL 1-800-432-4770.
2. BURIED CONDUIT FOR FIBER OPTIC CABLE SHALL BE PLACED WITH 36" MINIMUM COVER WITH CAUTION MARKER TAPE PLACED 12" BELOW FINISHED GRADE ABOVE FIBER OPTIC CABLE OR CONDUIT. PROVIDE 18" MINIMUM CLEARANCE TO OTHER BURIED UTILITIES.
3. BENDS IN CONDUIT FOR FIBER OPTIC CABLE SHALL BE 36" MINIMUM RADIUS UNLESS SPECIFIED OTHERWISE.
4. WHERE INDICATED, STATIONING IS BASED ON INFORMATION OBTAINED IN THE FIELD OR AERIAL MAPS. SOME VARIANCES SHOULD BE ANTICIPATED, ADJUST AS NEEDED.
5. CONDUITS TERMINATING IN PULL BOXES OR EMPTY SHALL BE PURGED AND LEFT CLEAN, DRY AND FREE OF DEBRIS. EMPTY CONDUITS SHALL BE CAPPED AT EACH END.
6. CONDUIT INSTALLATION MAY BE BY PLOW, OPEN TRENCHING, HAND DIGGING, MISSILE BORE OR HORIZONTAL DIRECTIONAL DRILL, AS INDICATED BY THE CONSTRUCTION DRAWINGS AND ALLOWED PER APPLICABLE STANDARDS.
7. CONDUITS PASSING UNDER EXISTING DRIVEWAYS, WALKWAYS, OR SIMILAR IMPROVEMENTS PAVED OR UNPAVED, PERPENDICULAR TO THE PRIMARY ROADWAY SHALL BE INSTALLED BY DIRECTIONAL BORE METHOD. UNLESS NOTED OR OTHERWISE RESTRICTED BY CONDITIONS OR APPLICABLE REGULATIONS, PAVED OR IMPROVED AREAS LESS THAN 15' WIDE, MISSILE BORE IS ACCEPTABLE.
8. WORK SITE CLEANUP SHALL BE CONDUCTED ON A DAILY BASIS. TRENCHES, BORE PITS AND DEPRESSIONS GREATER THAN 12" DEEP SHALL BE BACKFILLED AND COMPACTED BEFORE CONTRACTOR LEAVES THE WORK SITE EACH DAY.
9. BACKFILL MATERIAL SHALL CONSIST OF CLEAN FILL PLACED IN 6 TO 8 INCH LIFTS ABOVE THE CONDUIT(S). THE METHOD OF COMPACTION AND THE EQUIPMENT USED SHALL BE APPROPRIATE FOR THE MATERIAL TO BE COMPACTED. RELATIVE COMPACTION SHALL BE TO 95 PERCENT STANDARD DENSITY AND AS REQUIRED BY THE LOCAL GOVERNING AGENCY THROUGH WHICH THE WORK IS BEING DONE.
10. CURB OR COTT MARKERS SHALL BE PLACED AT NEW FIBER MANHOLES AND EXISTING FIBER MANHOLES WHERE EXISTING MARKER IS DAMAGED OR MISSING.
11. FOR UNDERGROUND INSTALLATION IN CONDUIT, 12GA LOCATE WIRE SHALL BE PULLED IN WITH FIBER OPTIC CABLE, EXCEPT WITHIN ELECTRICAL SUBSTATION FENCED AREAS.
12. EROSION AND SEDIMENT CONTROL IS THE RESPONSIBILITY OF THE CONTRACTOR. CURB AND GUTTER INLETS SHALL BE PROTECTED BY DOUBLE FILTER SOCK. DITCHES SHALL BE PROTECTED BY HAY BALES AND SILT FENCE.
13. EXISTING CONCRETE OR PAVEMENT, DAMAGED OR REMOVED SHALL BE REPLACED FROM JOINT TO JOINT.
14. UNLESS INDICATED OTHERWISE OH FIBER CABLES SHALL BE ATTACHED APPROXIMATELY 2'-0" BELOW NEUTRAL CONDUCTOR.
15. INSTALLED FIBER OPTIC CABLES SHALL MAINTAIN THE FOLLOWING VERTICAL CLEARANCES:

A. WHERE CABLE IS PARALLEL TO ROADWAY AND CABLE DOES NOT CROSS DRIVE OR ROADWAY: MAINTAIN MINIMUM 16' VERTICAL CLEARANCE FROM PAVEMENT OR GRADE TO LOWEST POINT OF FIBER OPTIC CABLE.

B. WHERE CABLE IS PARALLEL TO ROADWAY AND CABLE CROSSES OVER DRIVE OR ROADWAY: MAINTAIN MINIMUM 18' VERTICAL CLEARANCE FROM PAVEMENT OR GRADE TO LOWEST POINT OF FIBER OPTIC CABLE.

C. WHERE CABLE IS PARALLEL OR CROSSES OVER PAVEMENT WITH LIMITED ROW ACCESS OR AS DIRECTED: MAINTAIN 24' MINIMUM VERTICAL CLEARANCE FROM PAVEMENT OR GRADE TO LOWEST POINT OF FIBER OPTIC CABLE.

GENERAL NOTES:

1. CONSTRUCTION ACTIVITIES AND WORK PERFORMED UNDER THIS CONTACT SHALL ADHERE TO THE CURRENT JEA STANDARDS FOR UNDERGROUND AND AERIAL INSTALLATION.
2. CONSTRUCTION WORK SHALL BE PERFORMED IN STRICT ACCORDANCE WITH CURRENT APPLICABLE CODES AND REQUIREMENTS OF JURISDICTIONAL AGENCIES, AND THE RIGHT OF WAY GRANTOR. WORK SHALL COMPLY WITH O.S.H.A. STANDARDS AT ALL TIMES.
4. THE EXACT LOCATION OF EXISTING UTILITIES ARE NOT KNOWN. EXISTING UTILITIES, AND OTHER FEATURES, SUCH AS RIGHT-OF-WAY, EASEMENTS, DRIVEWAYS, AND SIMILAR UTILITY FACILITIES UNDERGROUND OR OVERHEAD WHERE SHOWN, HAVE BEEN INDICATED FOR REFERENCE PURPOSES ONLY. THE CONTRACTOR SHALL LOCATE EXISTING UTILITIES AND OBSTRUCTIONS AT LEAST 100 FEET IN ADVANCE OF ANY PHYSICAL INSTALLATION, SO THAT CHANGES IN ROUTE PLACEMENT CAN BE MADE AS NEEDED.
5. THE CONTRACTOR IS RESPONSIBLE FOR LOCATING AND PROTECTING EXISTING OBJECTS ABOVE GRADE, POLE MOUNTED, AT GRADE AND BURIED, INCLUDING BUT NOT LIMITED TO UTILITIES. THE CONTRACTOR SHALL NOTIFY OWNER OF DAMAGE AND REPAIR OR MAKE ARRANGEMENTS FOR REPAIR OF DAMAGED OBSTRUCTIONS AND UTILITIES.
6. EXISTING IMPROVEMENTS SUCH AS, ASPHALT OR CONCRETE PAVEMENT, CURBS, GUTTERS, WALKS, DRAINAGE DITCHES, EMBANKMENTS, SHRUBS, TREES, GRASS, SOD, ETC., IF DAMAGED, SHALL BE RESTORED TO ORIGINAL OR BETTER CONDITION.
7. THESE DRAWINGS ARE DIAGRAMMATIC IN NATURE AND INTEND TO CONVEY THE DESIGN INTENT, AND GENERAL ARRANGEMENT OF EQUIPMENT, DEVICES, AND UTILITIES, BUT NOT NECESSARILY IN THEIR PRECISE LOCATION. SOME VARIATION SHOULD BE ANTICIPATED. OMISSIONS BY THE ENGINEER DO NOT RELIEVE THE CONTRACTOR OF OBLIGATIONS TO PROVIDE CONTRACTED PRODUCTS AND SERVICES. THE ENGINEER RESERVES THE RIGHT TO PROVIDE CLARIFICATIONS OR INTERPRETATION OF THE DESIGN INTENT OR REQUIREMENTS.

PROTECTION OF HISTORIC ARTIFACTS:

DURING THE CONSTRUCTION PROCESS THE CONTRACTOR SHALL MONITOR EARTH SPOILS FOR SIGNS OF PREHISTORIC OR HISTORIC ARTIFACTS, SUCH AS POTTERY OR CERAMICS, PROJECTILE POINTS, DUGOUT CANOES, METAL IMPLEMENTS, HISTORIC BUILDING MATERIALS, OR ANY OTHER PHYSICAL REMAINS THAT COULD BE ASSOCIATED WITH NATIVE AMERICAN, EARLY EUROPEAN, OR AMERICAN SETTLEMENT.

IF THESE ARE ENCOUNTERED AT ANY TIME WITHIN THE PROJECT SITE AREA, THE PERMITTED PROJECT SHALL CEASE ALL ACTIVITIES INVOLVING SUBSURFACE DISTURBANCE IN THE VICINITY OF THE DISCOVERY. THE CONTRACTOR SHALL NOTIFY JEA, BLACK & VEATCH AND THE FLORIDA DEPARTMENT OF STATE, DIVISION OF HISTORICAL RESOURCES, COMPLIANCE REVIEW SECTION AT (850)-245-6333 IMMEDIATELY. PROJECT ACTIVITIES SHALL NOT RESUME WITHOUT VERBAL AND/OR WRITTEN AUTHORIZATION.

IN THE EVENT THAT UNMARKED HUMAN REMAINS ARE ENCOUNTERED DURING PERMITTED ACTIVITIES, ALL WORK SHALL STOP IMMEDIATELY AND THE PROPER AUTHORITIES NOTIFIED IN ACCORDANCE WITH SECTION 872.05, FLORIDA STATUTES.

LEGEND

NOTE: UNLESS OTHERWISE INDICATED, SYMBOLS MAY BE SHOWN LARGER THAN ACTUAL SIZE FOR CLARITY. THE SYMBOL LOCATIONS ARE APPROXIMATE ON DESIGN DRAWINGS, TO ALLOW FOR FIELD ADJUSTMENTS DURING CONSTRUCTION.

- — — — —

RIGHT OF WAY OR EASEMENT
- — — — —

PROPERTY BOUNDARY
- EXISTING UNDERGROUND FIBER OPTIC CONDUIT
- UNDERGROUND FIBER OPTIC CABLE IN CONDUIT
- AERIAL FIBER OPTIC CABLE
- — — — —

EXISTING AERIAL FIBER OPTIC CABLE
- · - · - · - · - · -

HDD INSTALLATION ROUTE/AREA
- ☒

FIBER OPTIC BORE PIT (48" X 48" X 36"D)
- NMH

FIBER OPTIC MANHOLE (30" X 60" X 30")
- EMH

EXISTING MANHOLE (30" X 60" X 30" UON)
- ◀001

CONSTRUCTION SEQUENCE NUMBER
- ⋈

FIBER SPLICE LOCATION
- ⓄM

COTT MARKER POST
- ⓄB

CURB / SIDEWALK MARKER
- EXISTING CONCRETE POLE
- EXISTING WOOD POLE
- EXISTING SPUN CONCRETE POLE
- ∞

OVERHEAD FIBER STORAGE (FO-CS) STORE 150' OF FIBER OPTIC CABLE
- ∞

EXISTING OVERHEAD FIBER STORAGE

APPROVED FOR CONSTRUCTION


THE DISTRIBUTION AND USE OF THE NATIVE FORMAT CAD FILE OF THIS DRAWING IS UNCONTROLLED. THE USER SHALL VERIFY TRACEABILITY OF THIS DRAWING TO THE LATEST CONTROLLED VERSION.



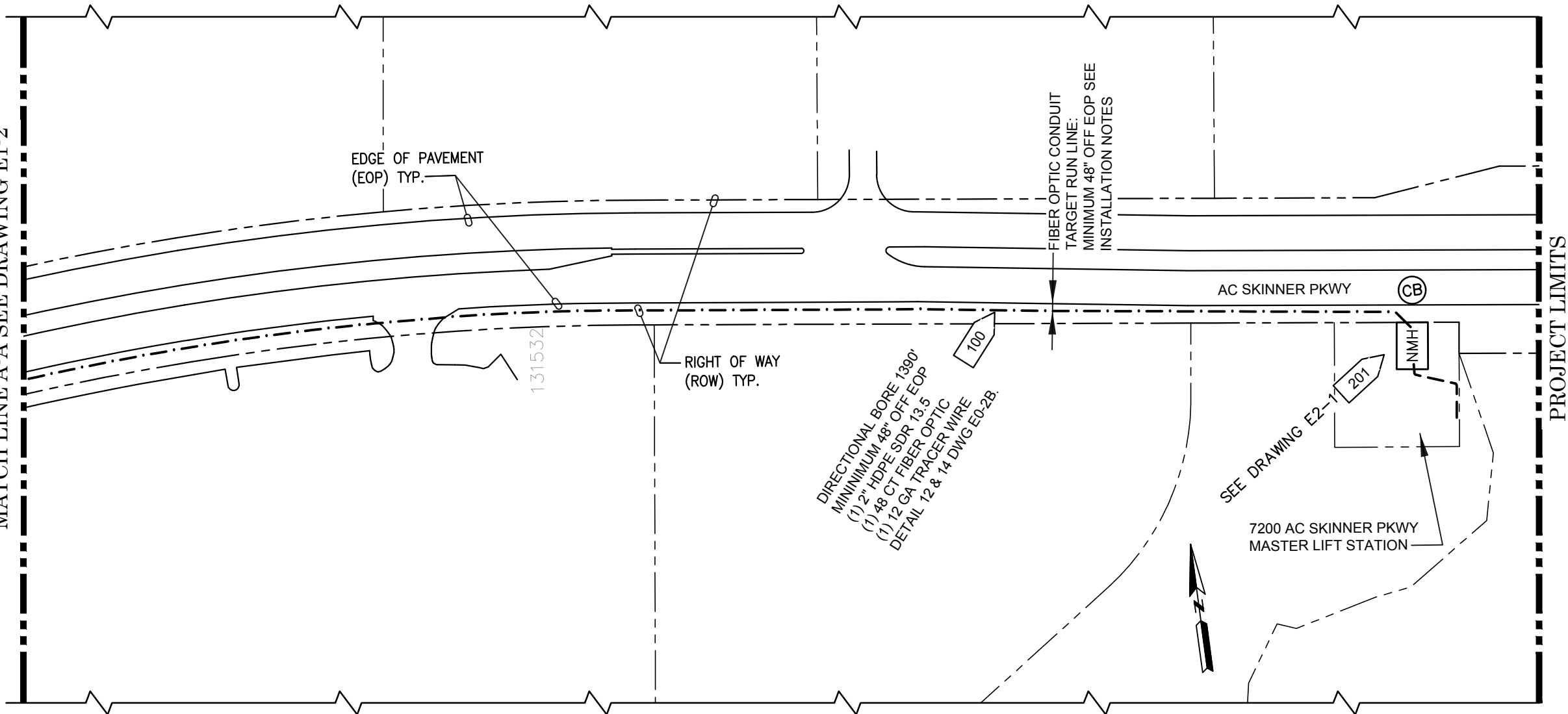
BLACK & VEATCH

12740 Gran Bay Parkway West
Suite 2140
Jacksonville, Florida 32258
CERTIFICATE OF AUTHORIZATION
NO. 8132

CONTACTS
PROJECT MANAGER: GREG RAGER
(904) 665-8136
PROJECT DESIGNER: KENT BAUGHER
(904) 288-4257

NO	REVISION DESCRIPTION	BY	DATE	ENGINEER: —	PAGER #	RADIO #	PHONE #	ENGINEERING RECORD			7200 AC SKINNER PARKWAY — MLS		PROJ PHASE
0	APPROVED FOR CONSTRUCTION	JKB	09/JAN/19			4.16 kV	13.2 kV	26.4 kV			FIBER OPTIC BUILD		0050
									DRAWN BY:	JKB	LEGEND AND CONSTRUCTION NOTES		PROJ NO. 400479
									DESIGNED BY:	JKB	DWG SCALE:		DRAWING NO. E0-3
									CHECKED BY:		 BUILDING COMMUNITY JACKSONVILLE, FLORIDA		SHEET CNT 5 OF 15
									APPROVED BY:				
									APPROVED FOR CONST BY:		TECHNOLOGY SERVICES		

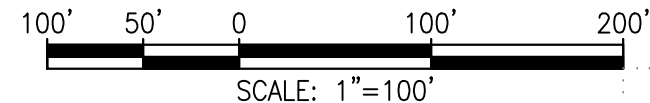
MATCH LINE A-A SEE DRAWING E1-2



PROJECT LIMITS

UNDERGROUND CONDUIT INSTALLATION NOTES:

1. CONTRACTOR SHALL FIELD DETERMINE OPTIMUM "RUN-LINE" OFF EDGE OF PAVEMENT FOR CONDUIT INSTALLATION REGARDLESS OF INSTALLATION METHOD. INSTALLATION SHALL REMAIN WITHIN THE ROADWAY RIGHT-OF-WAY BUT NO LESS THAN 48" OFF EOP.
2. WHERE EXISTING UTILITIES ARE PARALLEL TO FIBER OPTIC (FO) CONDUIT INSTALLATION, MAINTAIN 18" CLEARANCE. WHERE EXISTING UTILITIES ARE PERPENDICULAR TO FO CONDUIT, PROVIDE 18" MINIMUM VERTICAL CLEARANCE BELOW / UNDER EXISTING UTILITY. SEE DETAILS 12 & 14, DRAWING E0-2B.
3. WHERE UTILITY LOCATE SERVICE INDICATES POTENTIAL RUN-LINE CLEAR OF OTHER UTILITIES THE CONTRACTOR MAY AT THEIR OWN RISK, CHOOSE TO INSTALL FO CONDUIT BY PLOWING OR MACHINE TRENCHING.



APPROVED FOR
CONSTRUCTION

THE DISTRIBUTION AND USE OF THE NATIVE FORMAT CAD FILE OF THIS DRAWING IS UNCONTROLLED. THE USER SHALL VERIFY TRACEABILITY OF THIS DRAWING TO THE LATEST CONTROLLED VERSION.

CONTACTS


PROJECT MANAGER: GREG RAGER
(904) 665-8136

PROJECT DESIGNER: KENT BAUGHER
(904) 288-4257



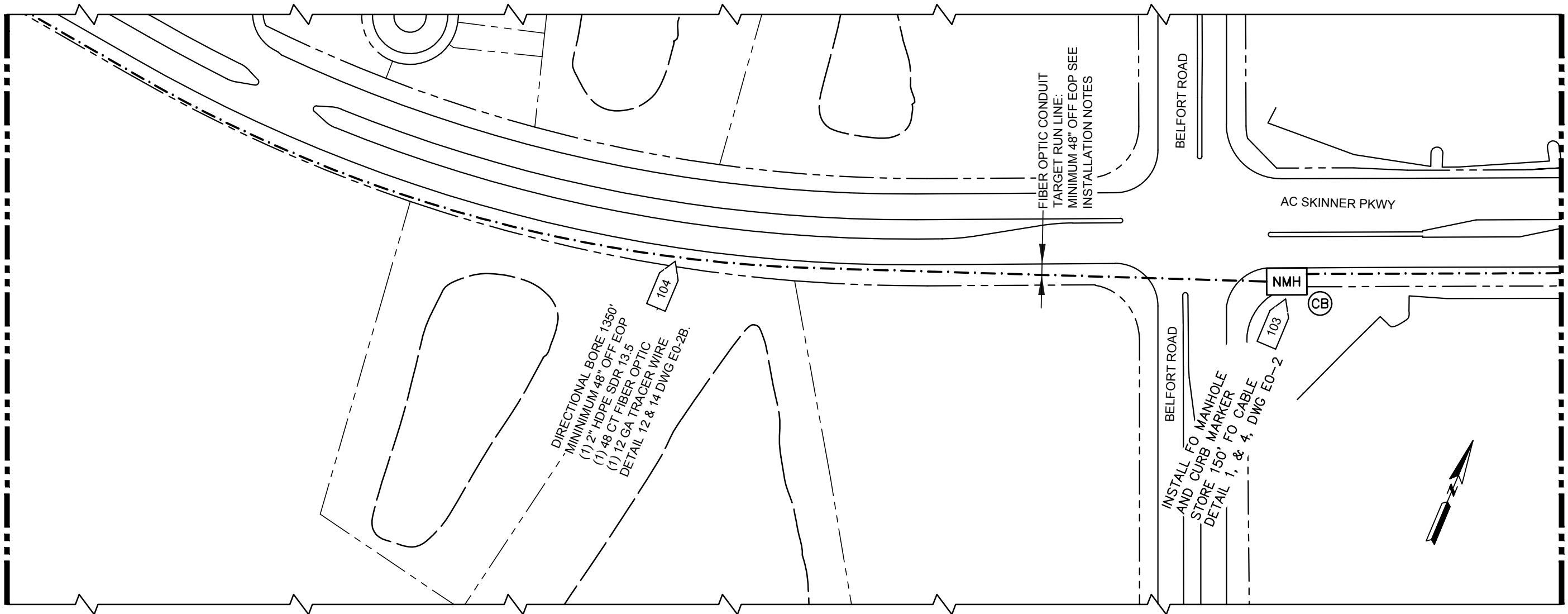
BLACK
&
VEATCH

12740 Gran Bay Parkway West
Suite 2140
Jacksonville, Florida 32258
CERTIFICATE OF AUTHORIZATION
NO. 8132

NO		REVISION DESCRIPTION		BY	DATE	ENGINEER: —				PAGER #				RADIO #		PHONE #		ENGINEERING RECORD			7200 AC SKINNER PARKWAY — MLS FIBER OPTIC BUILD FIBER ROUTING PLAN				PROJ PHASE		
0		APPROVED FOR CONSTRUCTION		JKB	09/JAN/19									4.16 kV		13.2 kV		26.4 kV							BY		DATE
						SUBSTATION NAME				00479										DRAWN BY:		JKB		NOV/18		PROJ NO.	
						CIRCUIT NUMBER/S														DESIGNED BY:		JKB		NOV/18		400479	
						SWITCH MAP NUMBER/S														CHECKED BY:						DRAWING NO.	
						OVERHEAD MAP NUMBER/S														APPROVED BY:						E1-1	
																				APPROVED FOR CONST BY:						SHEET CNT	
																										6 OF 15	
																				AS_INDICATED		 BUILDING COMMUNITY JACKSONVILLE, FLORIDA		TECHNOLOGY SERVICES			

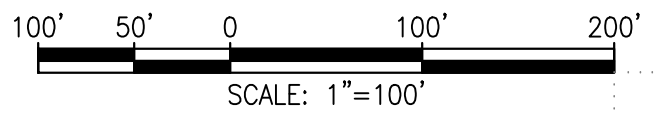
MATCH LINE C-C SEE DRAWING E1-4

MATCH LINE B-B SEE DRAWING E1-2



INSTALLATION NOTES:

1. CONTRACTOR SHALL FIELD DETERMINE OPTIMUM "RUN-LINE" OFF EDGE OF PAVEMENT FOR CONDUIT INSTALLATION REGARDLESS OF INSTALLATION METHOD. INSTALLATION SHALL REMAIN WITHIN THE ROADWAY RIGHT-OF-WAY BUT NO LESS THAN 48" OFF EOP.
2. WHERE EXISTING UTILITIES ARE PARALLEL TO FIBER OPTIC (FO) CONDUIT INSTALLATION, MAINTAIN 18" CLEARANCE. WHERE EXISTING UTILITIES ARE PERPENDICULAR TO FO CONDUIT, PROVIDE 18" MINIMUM VERTICAL CLEARANCE BELOW / UNDER EXISTING UTILITY. SEE DETAILS 12 & 14, DRAWING E0-2B.
3. WHERE UTILITY LOCATE SERVICE INDICATES POTENTIAL RUN-LINE CLEAR OF OTHER UTILITIES THE CONTRACTOR MAY AT THEIR OWN RISK, CHOOSE TO INSTALL FO CONDUIT BY PLOWING OR MACHINE TRENCHING.




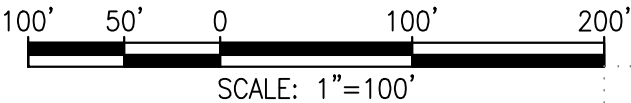
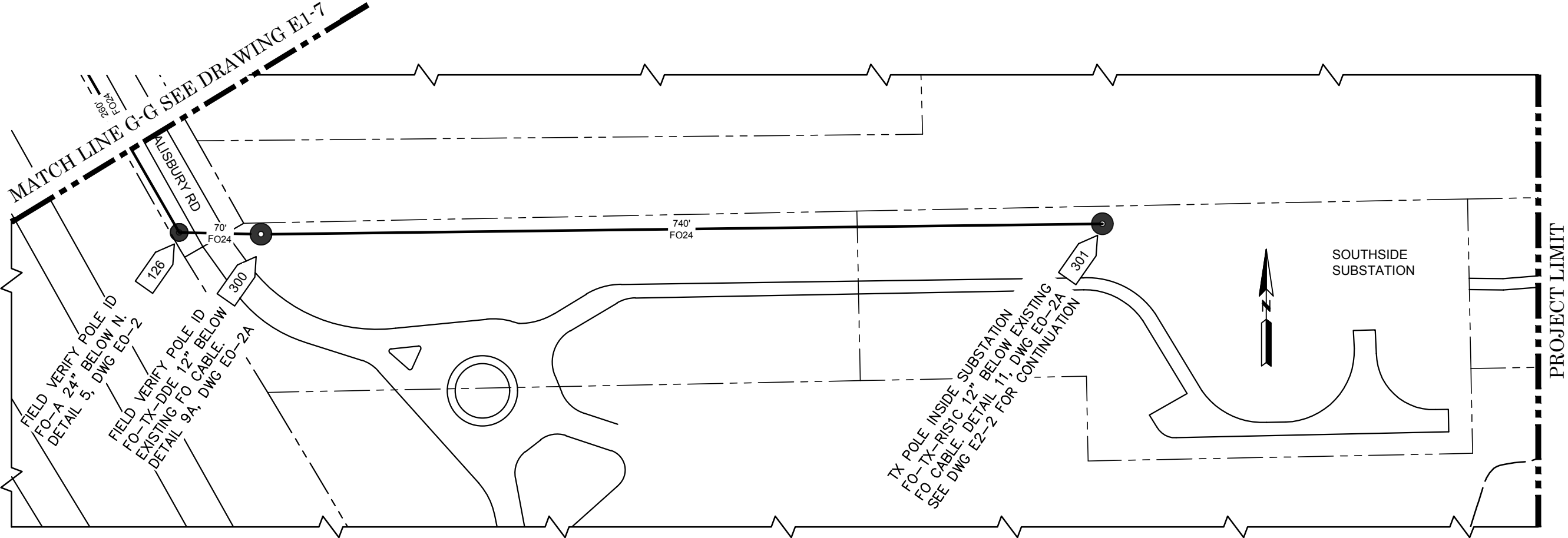
CONTACTS

PROJECT MANAGER: GREG RAGER
(904) 665-8136
PROJECT DESIGNER: KENT BAUGHER
(904) 288-4257

**BLACK
&
VEATCH**

12740 Gran Bay Parkway West
Suite 2140
Jacksonville, Florida 32258
CERTIFICATE OF AUTHORIZATION
NO. 8132

NO		REVISION DESCRIPTION	BY	DATE	ENGINEER: — PAGER # RADIO # PHONE #				ENGINEERING RECORD			7200 AC SKINNER PARKWAY – MLS FIBER OPTIC BUILD FIBER ROUTING PLAN			PROJ PHASE			
0		APPROVED FOR CONSTRUCTION	JKB	09/JAN/19											0050			
					SUBSTATION NAME				DRAWN BY:			JKB	NOV/18	PROJ NO.				
					CIRCUIT NUMBER/S				DESIGNED BY:			JKB	NOV/18	400479				
					SWITCH MAP NUMBER/S				CHECKED BY:					DRAWING				
					OVERHEAD MAP NUMBER/S				APPROVED BY:					E1–3				
									APPROVED FOR CONST BY:					SHEET C				
												DWG SCALE:	 BUILDING COMMUNITY JACKSONVILLE, FLORIDA		TECHNOLOGY SERVICES		8 OF 1	
												AS_INDICATED						



APPROVED FOR
CONSTRUCTION

THE DISTRIBUTION AND USE OF THE NATIVE FORMAT CAD
FILE OF THIS DRAWING IS UNCONTROLLED. THE USER
SHALL VERIFY TRACEABILITY OF THIS DRAWING TO THE
LATEST CONTROLLED VERSION.

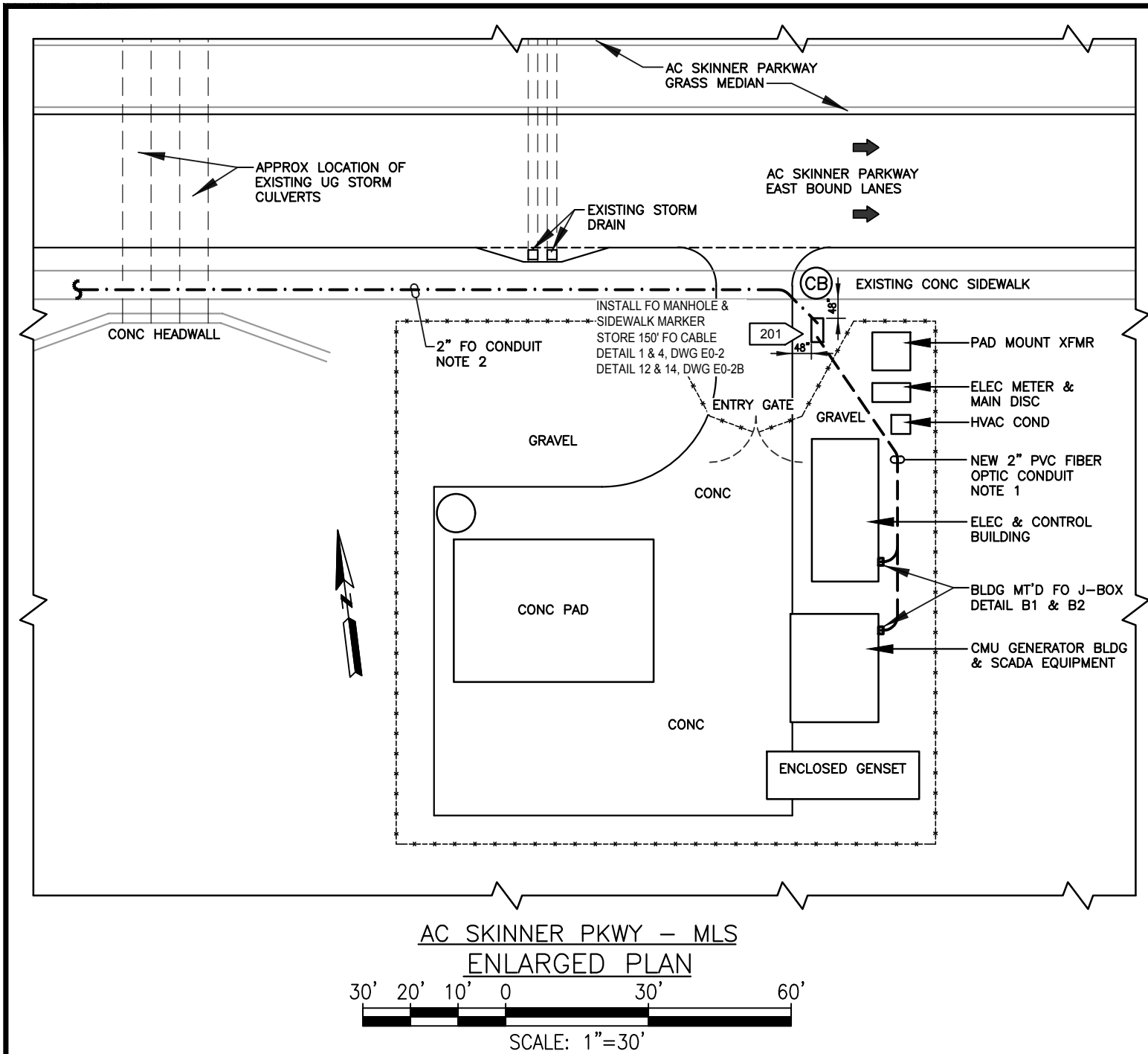
CONTACTS
PROJECT MANAGER: GREG RAGER
(904) 665-8136
PROJECT DESIGNER: KENT BAUGHER
(904) 288-4257



BLACK
&
VEATCH

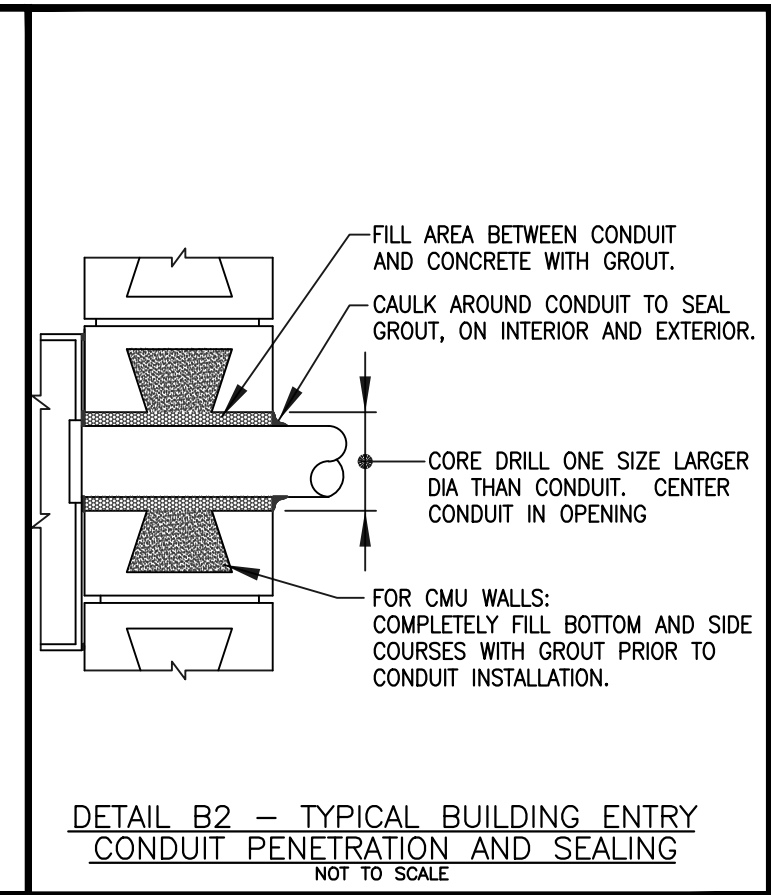
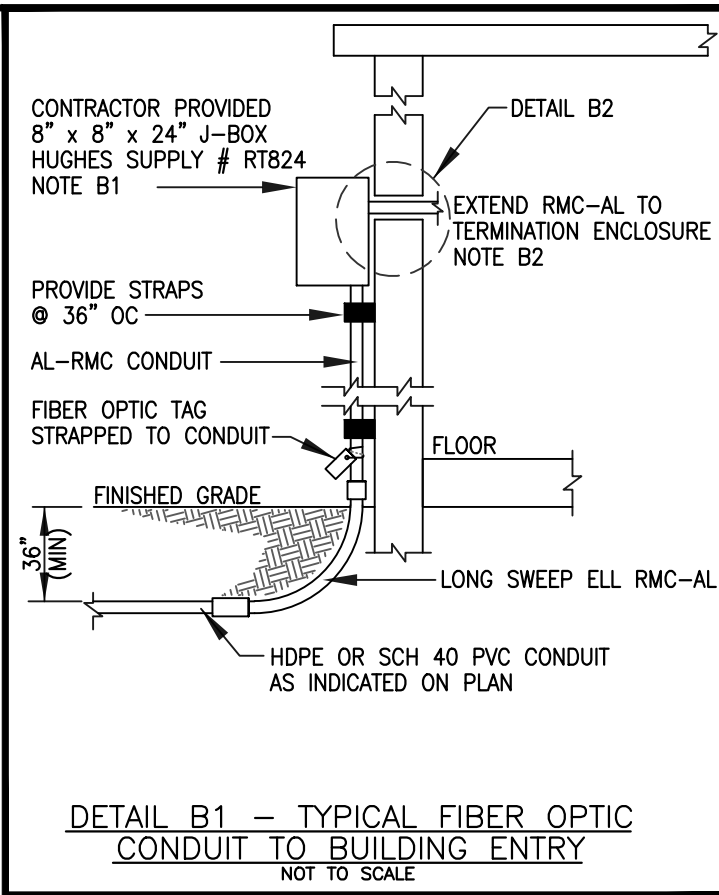
12740 Gran Bay Parkway West
Suite 2140
Jacksonville, Florida 32258
CERTIFICATE OF AUTHORIZATION
NO. 8132

NO		REVISION DESCRIPTION	BY	DATE	ENGINEER: —		PAGER #	RADIO #	PHONE #		ENGINEERING RECORD			7200 AC SKINNER PARKWAY — MLS FIBER OPTIC BUILD FIBER ROUTING PLAN			PROJ PHASE
0		APPROVED FOR CONSTRUCTION	JKB	09/JAN/19				4.16 kV	13.2 kV	26.4 kV			BY				DATE
					SUBSTATION NAME			00479			DRAWN BY:		JKB	JAN/19			PROJ NO.
					CIRCUIT NUMBER/S						DESIGNED BY:		JKB	JAN/19			400479
					SWITCH MAP NUMBER/S						CHECKED BY:						DRAWING NO.
					OVERHEAD MAP NUMBER/S						APPROVED BY:						E1-8
											APPROVED FOR CONST BY:						SHEET CNT
																	13 OF 15



PLAN NOTES:

1. INSTALL APPROXIMATELY 60' 2" PVC FO CONDUIT WITHOUT UNDERMINING CONCRETE SLABS OR FOUNDATIONS. FIELD VERIFY FIBER OPTIC CABLE TERMINATION LOCATION WITH JEA.
2. INSTALL 2" CONDUIT FROM NEW MANHOLE, UNDER SIDEWALK USING HDD ACROSS WATER CROSSING. SEE DWG E1-1 FOR INSTALLATION NOTES.



FIBER OPTIC BUILDING ENTRY NOTES:

- B1. INSTALL 2" PVC FROM FO MANHOLE TO BUILDING RISER. TRANSITION TO RMC-AL AT UG ELBOW AS SHOWN. EXTEND RMC-AL TO J-BOX APPROX. 5' ABOVE FINISHED GRADE/PAVEMENT. FIELD VERIFY BOX MOUNTING HEIGHT.
- B2. ROUTE 2" RMC-AL FROM J-BOX THRU WALL TO TERMINATION LOCATION PER JEA. PROVIDE MINIMUM 50' SLACK CABLE INSIDE BUILDING NEAR TERMINATION POINT.

CONTACTS
PROJECT MANAGER: GREG RAGER
(904) 665-8136
PROJECT DESIGNER: KENT BAUGHER
(904) 288-4257

APPROVED FOR
CONSTRUCTION

THE DISTRIBUTION AND USE OF THE NATIVE FORMAT CAD FILE OF THIS DRAWING IS UNCONTROLLED. THE USER SHALL VERIFY TRACEABILITY OF THIS DRAWING TO THE LATEST CONTROLLED VERSION.

BLACK & VEATCH
12740 Gran Bay Parkway West
Suite 2140
Jacksonville, Florida 32258
CERTIFICATE OF AUTHORIZATION
NO. 8132

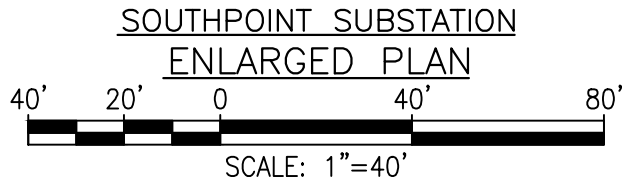
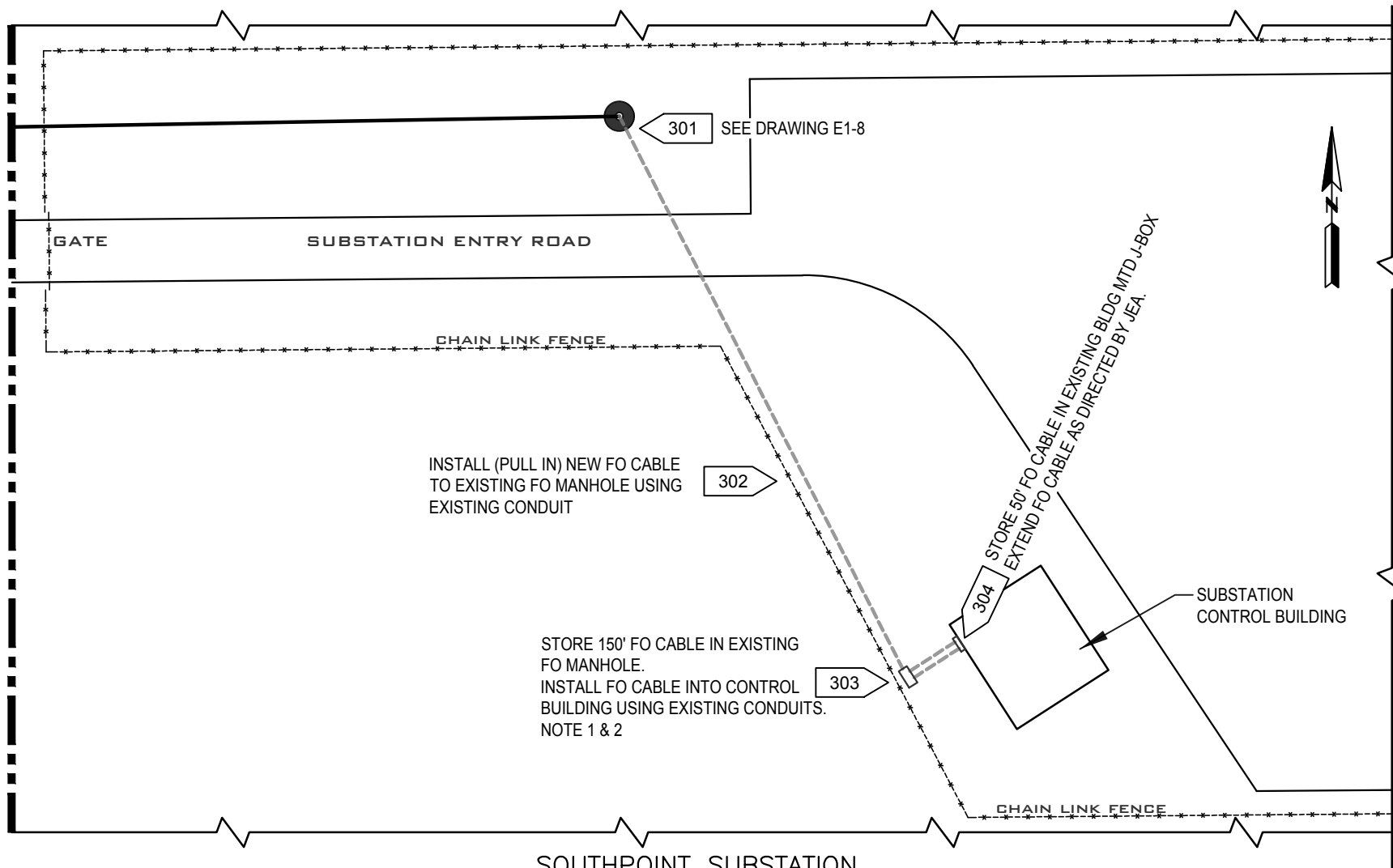
NO	REVISION DESCRIPTION	BY	DATE	ENGINEER: -	PAGER #	RADIO #	PHONE #	ENGINEERING RECORD	BY	DATE	7200 AC SKINNER PARKWAY - MLS FIBER OPTIC BUILD MATER LIFT STATION ENLARGED PLAN	PROJ PHASE 0050
0	APPROVED FOR CONSTRUCTION	JKB	09/JAN/19			4.16 kV	13.2 kV	26.4 kV	DRAWN BY:	JKB	NOV/18	PROJ NO. 400479
				SUBSTATION NAME		00479			DESIGNED BY:	JKB	NOV/18	DRAWING NO. E2-1
				CIRCUIT NUMBER/S					CHECKED BY:			SHEET CNT 14 OF 15
				SWITCH MAP NUMBER/S					APPROVED BY:			
				OVERHEAD MAP NUMBER/S					APPROVED FOR CONST BY:			

DWG SCALE:
AS INDICATED

BUILDING COMMUNITY
JACKSONVILLE, FLORIDA

TECHNOLOGY
SERVICES

MATCH LINE - SEE DRAWING E1-7



- PLAN NOTES:
1. FIELD VERIFY FIBER OPTIC BUILDING ENTRY AND CABLE TERMINATION LOCATIONS WITH JEA.
 2. PROVIDE 50' SLACK FO CABLE INSIDE CONTROL BUILDING NEAR TERMINATION LOCATION IDENTIFIED BY JEA.

APPROVED FOR
CONSTRUCTION

THE DISTRIBUTION AND USE OF THE NATIVE FORMAT CAD FILE OF THIS DRAWING IS UNCONTROLLED. THE USER SHALL VERIFY TRACEABILITY OF THIS DRAWING TO THE LATEST CONTROLLED VERSION.

CONTACTS
PROJECT MANAGER: GREG RAGER
(904) 665-8136
PROJECT DESIGNER: KENT BAUGHER
(904) 288-4257



BLACK
&
VEATCH

12740 Gran Bay Parkway West
Suite 2140
Jacksonville, Florida 32258
CERTIFICATE OF AUTHORIZATION
NO. 8132

NO		REVISION DESCRIPTION	BY	DATE	ENGINEER: —	PAGER #	RADIO #	PHONE #	ENGINEERING RECORD			7200 AC SKINNER PARKWAY — MLS FIBER OPTIC BUILD SOUTHPOINT SUBSTATION ENLARGED PLAN			PROJ PHASE
0		APPROVED FOR CONSTRUCTION	JKB	09/JAN/19			4.16 kV	13.2 kV	26.4 kV		BY				DATE
					SUBSTATION NAME		00479			DRAWN BY:	JKB	NOV/18	PROJ NO.		
					CIRCUIT NUMBER/S					DESIGNED BY:	JKB	NOV/18	400479		
					SWITCH MAP NUMBER/S					CHECKED BY:			DRAWING NO.		
					OVERHEAD MAP NUMBER/S					APPROVED BY:			E2-1		
										APPROVED FOR CONST BY:			SHEET CNT		
													12 OF 12		

APPENDIX B RESPONSE FORM
97294: 7200 AC Skinner Lift Station Fiber Build

Submit via email along with other required forms to: garljb@jea.com

Company Name: _____

Company's Address _____

Phone Number: _____ FAX No: _____ Email Address: _____

BID SECURITY REQUIREMENTS

- ☒ None required
☐ Certified Check or Bond (Five Percent (5%) of Total Bid Price)

TERM OF CONTRACT

- ☒ One Time Purchase
☐ Annual Requirements 1 yr. term

SAMPLE REQUIREMENTS

- ☒ None required
☐ Samples required prior to Bid Opening
☐ Samples may be required subsequent to Bid Opening

SECTION 255.05, FLORIDA STATUTES CONTRACT BOND

- ☒ None required
☐ Bond required 100% of Bid Award

QUANTITIES

- ☐ Quantities indicated are exacting
☒ Quantities indicated reflect the approximate quantities to be purchased Throughout the Contract period and are subject to fluctuation in accordance with actual requirements.

INSURANCE REQUIREMENTS

Insurance required

PAYMENT DISCOUNTS

- ☐ 1% 20, net 30
☐ 2% 10, net 30
☐ Other _____
☐ None Offered

ENTER YOUR RESPONSE FOR THE ITN 95880	TOTAL BID PRICE
Total Bid Price for ITN 97294: 7200 AC Skinner Lift Station Fiber Build (Transfer total from Appendix B Response Workbook)	\$ _____

☐ I have read and understood the Sunshine Law/Public Records clauses contained within this solicitation. I understand that in the absence of a redacted copy my proposal will be disclosed to the public "as-is".

RESPONDENT'S CERTIFICATION

By submitting this Response, the Respondent certifies that it has read and reviewed all of the documents pertaining to this Solicitation, that the person signing below is an authorized representative of the Respondent's Company, that the Company is legally authorized to do business in the State of Florida, and that the Company maintains in active status an appropriate contractor's license for the work (if applicable). The Respondent also certifies that it complies with all sections (including but not limited to Conflict Of Interest and Ethics) of this Solicitation, and that the Respondent is an authorized distributor or manufacturer of the equipment that meets the Technical Specifications stated herein.

We have received addenda _____

Handwritten Signature of Authorized Officer of Company or Agent _____ Date _____

_____ through _____

Printed Name and Title



PROCUREMENT SERVICES PROCEDURE: OS A0500 PS 120B Contractor Travel

TITLE: Travel Approval and Expense Reimbursement (Contractor)

CREATION DATE: May 26, 1988

REVISED: April 1, 2010

POLICY: JEA's travel requirements for contractors parallel the same travel guidelines in OS A0500 PS 120A for JEA Employee Travel. JEA is authorized to provide reimbursements for certain expenses incurred by a non-JEA employee upon the traveler meeting all the requirements stated in this procedure. The proper approval process must be followed for a non-JEA employee to travel and receive reimbursements for expenses incurred.

OBJECTIVES: Provide assistance to the non-JEA traveler in making travel arrangements and filing a travel claim for reimbursement of travel expenses occurred.

ASSIGNMENT: Director, Procurement Services is responsible for maintenance and implementation of this procedures. All using employees are responsible for compliance herewith.

PROCEDURE:

I. TRAVEL REQUESTS - Contractors must request approval for travel on official JEA business prior to commencement of travel. A Travel Request/Reimbursement Form is located in **Quest, Enabling Processes, Travel** and must be completed and submitted to the traveler's approving authority before travel begins.

II. GENERAL TRAVEL GUIDELINES

- A. Constructive Point of Origin** - The application of the constructive point of origin regulation will ensure that the traveler travels the shortest reasonable distance on business. Travel shall be deemed to have begun at the usual place of business or residence, or the place where travel actually began, whichever is less.
- B. Constructive Travel Time** is the time the traveler actually departs for his/her destination, or at the latest time the traveler could reasonably have departed in order to arrive at his/her destination in time to accomplish the official business, whichever is later. The same applies to the return back to the point of origin.
1. Common Carrier (excluding rental automobile) Travel Time begins two hours prior to the time the traveler's conveyance actually departs.
 2. Motor vehicle (including rental automobile) Travel Time begins at the time travelers actually begin driving to their destination.
 3. If a traveler conducts personal business during official travel, the personal business shall be considered to have been conducted at the beginning or at the end of the travel.

C. Transportation

1. The traveler requesting approval to travel shall choose the most economical means of transportation, considering the nature of the business, the traveler's time, cost of transportation, meals, lodging and incidental expenses required.
2. Reimbursement shall be made only for travel performed over usually regularly traveled routes to the destination. When travel is by indirect route for the traveler's own convenience, reimbursement for expenses shall be based only on such charges as would have been incurred over the usually traveled route.
3. If the total miles from the departure point to destination exceeds 400 miles round trip, the mileage reimbursement for use of a private motor vehicle shall be limited to the lesser of:
 - a. IRS-authorized mileage rates described in Section 106.706 of the Ordinance Code, City of Jacksonville; or
 - b. the lowest airline common carrier coach fare available to the nearest airport plus IRS-authorized mileage rate per mile from the airport to the destination.

IV. AUTHORIZED EXPENSES

A. Airplane

1. Travel by Common Carrier shall be reimbursed at the lowest coach fare rate available (except that the first class rate is authorized if coach fare is not available). The Common Carrier shall complete The Certification of Unavailability of Coach Accommodation (Appendix A)
2. Reservations for a Saturday night stay over are encouraged if it results in a net savings after considering all incremental travel related expenses.
3. Reimbursement for rented aircraft shall be based on the hourly rental rate for the aircraft, including fuel, if the cost of renting the aircraft can be demonstrated to be less than the lowest available common carrier coach fare.
4. A copy of the ticket and itinerary must be submitted along with the expense statements.

B. Automobiles

1. If travel is by private automobile, reimbursement shall be based on IRS authorized mileage rate in existence at the time of travel. All mileage shall be completed from the constructive point of origin to the point of destination. Vicinity mileage incurred while driving on official business may also be reimbursed. Current mileage rates are listed on **Quest, Enabling Processes, Travel**.
2. No other reimbursement for expenses related to the operation, maintenance and ownership of a vehicle shall be allowed when a private motor vehicle is used on public business.

C. Car Rental

1. Rental cars shall be approved only if taxis or other means of transportation are less economical or otherwise impractical. Avis Car Rental is JEA's current rental car agency. Complete rental car information on **Quest, Enabling Processes, Travel**.
2. Every effort shall be made to coordinate travel so that travelers share a rental car and thereby eliminate multiple cars at the same location.
3. Travelers shall use the Compact (Class B) vehicles unless the number of passengers or the volume of equipment makes the compact class impractical.

4. Personal accident insurance purchased by the traveler will not be reimbursed by JEA.
5. A copy of itemized rental car charges will be made and submitted with the expense statement.

D. Lodging

1. Reasonable reimbursement will be made for the cost of overnight lodging when a traveler is away from his/her place of residence. Travelers shall select lodging which is the most economically available, consistent with the duties being performed.
2. Travelers will be reimbursed for a single room rate; double occupancy rates may be obtained if two travelers share a room.
3. An extended stay facility may be obtained, however the expense must be reasonable and the daily cost shall not exceed \$100 per night.
4. Travelers must document all lodging expenses with itemized statement and paid receipt from lodging facility. A copy of the receipt must be submitted with the expense statement.

E. Meals

1. IRS per diem rates vary from City to City. The maximum rate allowed for JEA travel is \$50 per day. You may travel in cities whose IRS per diem rates are less than JEA's per diem rates. If that is the case, the lesser rate applies. There are no meal reimbursements over the maximum JEA rate of \$50 unless travel is international. International travel is calculated at twice the JEA per diem rate of \$50.
2. Per diem is reimburseable as follows:
 - a. Breakfast - when Travel Time begins before 6:00 a.m. and extends beyond 8:00 a.m.
 - b. Lunch - when Travel Time begins before 12:00 noon and extends beyond 2:00 p.m.
 - c. Dinner - when Travel Time begins before 6:00 p.m. and extends beyond 8:00 p.m.
 - d. International Travel – for travel outside of the United States, the per diem rate is doubled to \$100 per day.
3. The maximum JEA per diem rate of up to \$50 will be paid for an entire day when Travel Time for that day begins before 6:00 a.m. and extends beyond 8:00 p.m. Lesser IRS rates apply if applicable to your travel city.
4. Per diem rates may not be claimed for meals (except those provided by common carrier transportation) made available without specific charge at a seminar, conference or training session.
5. Current per diem for various cities is located on **Quest, Enabling Processes, Travel.**

F. Telephone Calls

1. Communication expenses, necessary to conduct official JEA business shall be allowed as a reimbursable expense.
2. Personal long distance phone charges shall be allowed as a reimbursable expense when travelers must call family members, or caretakers for dependents, to tell of travel delays. Any other routine or non-emergency personal calls shall be at the expense of the traveler and shall not be reimbursed.
3. A receipt documenting the telephone charges shall be submitted with the Travel Expense Statement.

G. Incidental Transportation Expenses

The following expenses incidental to transportation of the traveler may be reimbursed:

1. Taxi fare
2. Ferry fares, bridge, rail and tunnel tolls
3. Storage and parking fees
4. Reasonable tips for transportation of baggage (not to exceed \$1.00 per bag per transfer/2 bags maximum). Receipts not required.

V. TRAVEL REIMBURSEMENT:

- A. JEA will reimburse the contractor in accordance with the payment terms and conditions as outlined in the company's contract or purchase order. All invoices must be submitted to Travel Services for auditing purposes. Once approved, the traveler's claim will be submitted to Accounts Payable for payment. A Direct Deposit form must be completed for payment. Form located on **Quest, Enabling Processes, Travel**.
- B. JEA will only reimburse the contractor for travel expenses that are documented with receipts submitted with the expense statement.
- C. The traveler's copy of the itinerary, ticket stubs, detailed paid hotel bill, rental car receipt, parking receipts, toll receipts, storage receipts, taxi receipts, telephone charges receipt, must accompany the request for reimbursement.

VI. DOCUMENTATION AND FORMS REQUIRED:

The Contractor's Travel Request/Reimbursement Form shall include, but not be limited to:

- A. Name of each traveler
- B. Destination of the traveler (place of departure and destination)
- C. Dates encompassed by the travel (the time & date of departure and the time & date of return)
- D. Each day of travel will be entered in a separate column/line. Items of travel applicable to that day will be entered on the appropriate column/line. The cost of transportation (air, rental car) may be entered on day 1 of the travel.
- E. Per diem or meal allowance will be claimed as provided in Section IV. E. of this document. Subsistence rates for eligible meals will be entered in the column/line of the day claimed.
- F. Traveler shall include the actual miles traveled on official business. Current IRS mileage rates may be viewed on **Quest, Enabling Processes, Travel**.
- G. All other expenses associated with travel are to be itemized and entered on the specific day incurred on the appropriate column/line of the form.
- H. A Direct Deposit form must be completed and submitted to Accounts Payable. A Direct Deposit Form is located on **Quest, Enabling Processes, Travel**.

SIGNED: _____ John P. McCarthy

EFFECTIVE DATE: _____ April 1, 2010

Revised: 6/25/07; 12/11/2001; 6/18/2001; 11/29/200