

JEA Energy Production: Brandy Branch Control Room Console Upgrade

PREPARED BY: David Biruk

DATE : 3/27/2025

1. Purpose

JEA is requesting a quote for turn key replacement of the control room consoles at Brandy Branch Generation Station (BGS)

2. Site Information

JEA Brandy Branch Generating Station (BGS) is located at 15701 West Beaver Street, Jacksonville, Florida 32234. The BGS control room has a “U” shaped console on a raised tile floor. Operators sitting at these consoles operate various units. When the console was originally installed, it was designed to house large HMI computers and CRT monitors that have smaller screens than many we use today. It also houses some instrumentation and controls.

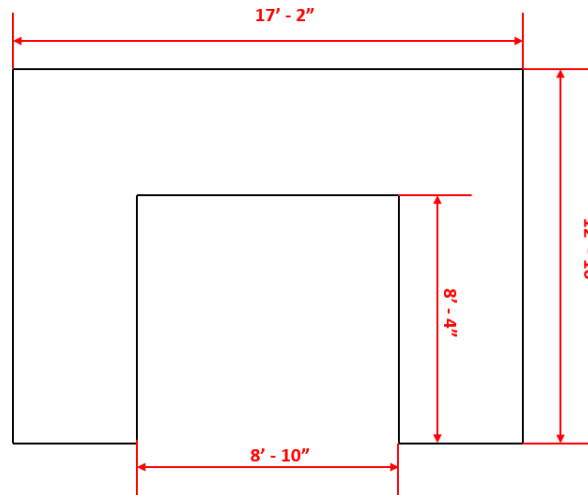


3. Scope of Work

3.1 Pre - Outage

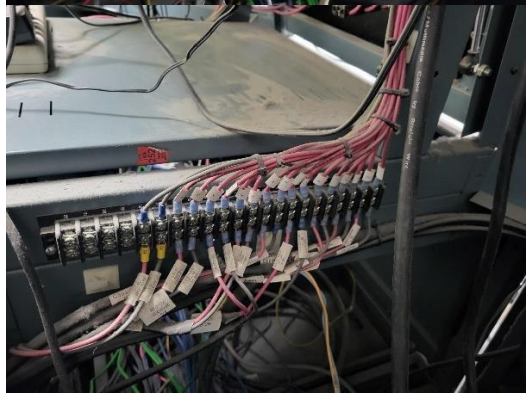
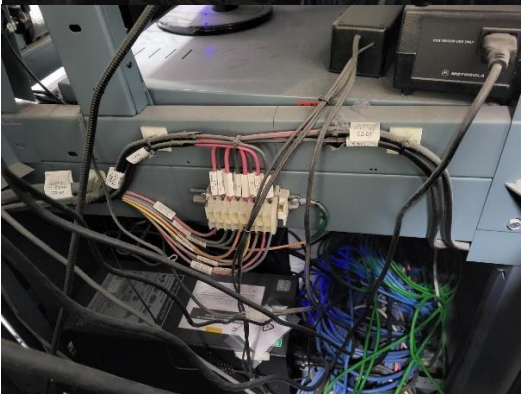
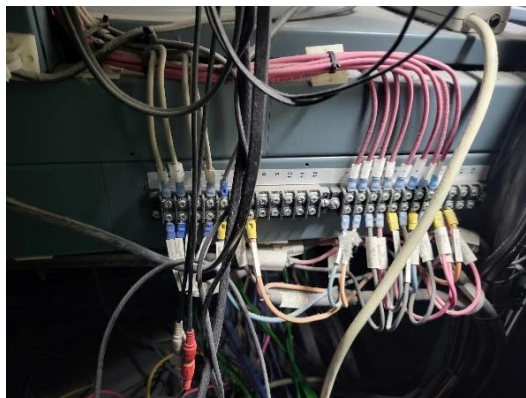
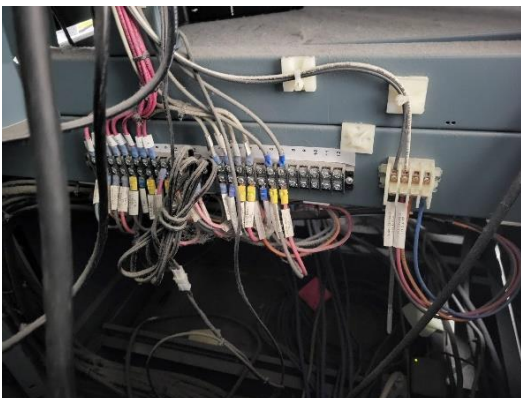
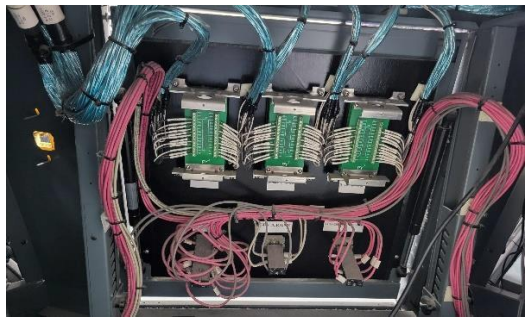
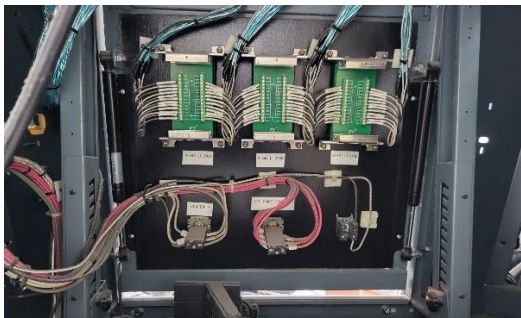
3.1.1 Vendor to deliver new console equipment to site prior to the outage start date. Console design must include the following:

- “U” shaped design capable of comfortably seating (4) operators
- Dimensions of new console
 - Outside dimensions shall not exceed 17’ - 2” across and 12’ - 10” deep
 - Inside dimensions must be at least 8’ - 10” across and 8’ - 4” deep.
 - Measurements of the existing console below.



- The edges of the console inside of the u shall be straight with no curves.
 - Any beveled pieces in the corners shall not extend more than 6” in either direction
- Design must include mounting hardware for six (6) 50” monitors above the console mounted to the ceiling and for seventeen (17) 22” to 27” monitors mounted to the console.
- Vendor to provide (6) new Iron Horse 4000 series chairs.
- Design must include combo outlets consisting of 2 power outlets and 1 USB A+C charging port. The layout should include 2 on the left section, 2 on the center section, and 2 on the right section, for a total of 6.
- Design must include a pedestal in each corner for drum level indications and emergency trip pushbuttons.
 - The instrumentation is currently mounted on a panel board that is approximately 19” wide and 17” high. The new pedestal must include a window and mounting for mounting the panel. The vendor is responsible for confirming measurements and ensuring fit.
 - New console shall include space for mounting terminal strips needed for pedestal wiring.
 - Console shall be configured so that all instrument and control connections can be accessed from the front of the console without having to access the back.

- Vendor will be responsible for confirming measurements



3.2 Outage

- 3.2.1 Prior to demo, JEA system admins, I&C and electricians will label, determinate and remove any existing computer equipment, controls and instrumentation from the console.
- 3.2.2 Vendor will demo and remove existing console
- 3.2.3 Floor tiles will be replaced by others
- 3.2.4 Vendor will install new consoles and mounting hardware. New console will be mounted with the back of the console along the south wall.
- 3.2.5 Vendor to mount 50” monitors provided by JEA, JEA to mount 27” and 22” monitors
- 3.2.6 After console replacement, JEA system admins, I&C and electricians will re-terminate and install computer equipment, controls and instrumentation back into the console.

4. Codes and Standards

The following codes and standards, as amended to date, are applicable under this contract for supplied equipment and services:

- Occupational Safety and Health (OSHA)
- ISO 11064 – Ergonomic Design of Control Centers
- ISO 9241 - Ergonomics of human-system interaction and related, human-centered design processes

5. Reference Drawings

- 700F018 – Control Room Floor Plan

6. Minimum requirements

The vendor must have provided a minimum of three generating station control room consoles in the last five years.

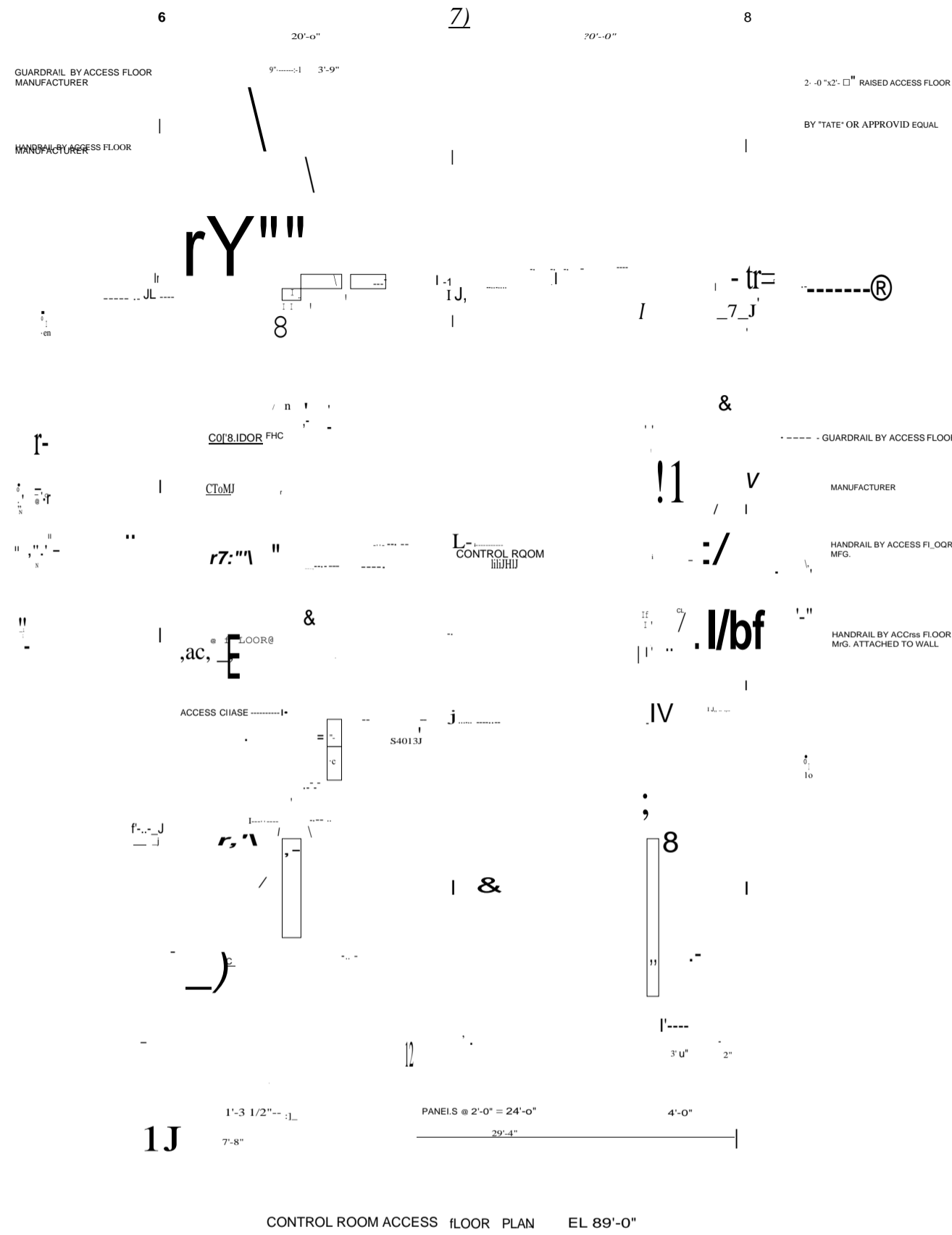
7. Pricing

The vendor shall provide lump sum pricing that includes all costs associated with the equipment and services listed in the work scope in section 3 above as well as any other equipment, service or other costs that will be required to complete the console replacement.

8. Bid Submittals

The vendor shall provide in addition to a lump sum cost, a milestone payment schedule that is broken down into payments required upon order, upon delivery of equipment and upon completion of installation and commissioning of the new console.

The vendor shall also provide a list of references for verifying minimum requirements.



1J 7'-8" 29'-4" 4'-0" 3'-0" 2"

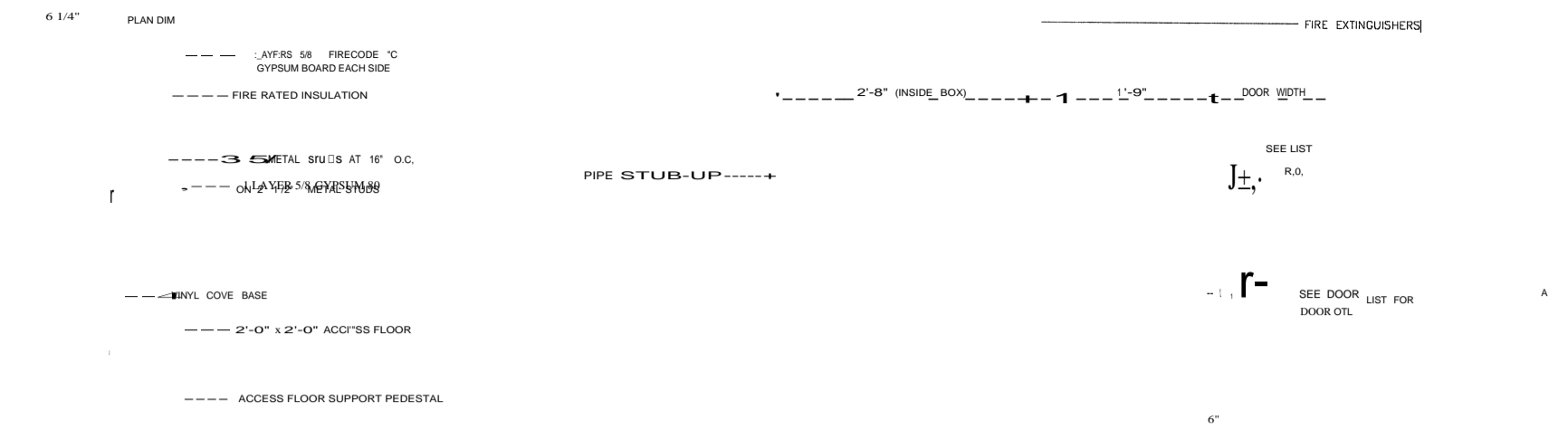
CONTROL ROOM ACCESS FLOOR PLAN EL 89'-0"

TOSULL HEIGHT WALL
EL 103'-0"

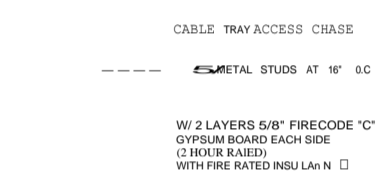
FINISH CEILING
EL 98'-2"

(2) 4'-0" (w), 4'-0" (h)
LIGHTWGT
ACCESS PANELS

ELEVATION



SECTION 1



DETAIL 2



JAMB SECTION 3
NOT TO SCALE

2 1/2" METAL STUDS
1 LAYER 5/8" GYPSUM BOARD, 1 SIDE

FIRE EXTINGUISHERS
PIPE STUB-UP
SEE LIST R.O.
SEE DOOR LIST FOR DOOR OTL.
6"

2 LAYERS 5/8 FIRECODE 'C' GYPSUM BOARD EACH SIDE
1 LAYER 5/8 GYPSUM BD
ON 2 1/2" METAL STUDS
3 5/8 METAL STUDS AT 16" O.C.
FIRE RATED INSULATION

M010322-700F018 R1
JEA BRANDY BRANCH 1/11/202

REVISIONS NOTED
CONTRACTOR FROM RESPONSIBILITY OF 115e FOR MANUFACTURE FOR CORRECTIONS

EXCEPTIONS NOTED
REVISIONS NOTED

ENGINEERING
CORRECTION
115e FOR MANUFACTURE FOR CORRECTIONS

