

CUSTOMER: DELAVAL TURBINE, INC.
 CUSTOMER P.O.: 500289-003
 PRATT ORDER NO.: 7-5427-1, 2, 5 & 6
 PROJECT: JACKSONVILLE, FLA. #1

ITEM NO.	DESCRIPTION	MATERIAL
1	BODY	CAST IRON ASTM A126 CLASS B
2	BEARINGS	TEFLON LINED-FIBERGLASS BACKED
3	DISC	ALUMINUM BRONZE ASTM B-148 GR. 90
		CAST IRON ASTM A48-64 CLASS 40
4	STUB SHAFTS	DUCTILE IRON ASTM A536 CLASS 65-45-12
		STAINLESS STEEL 18-8 TYPE 304
5	PACKING	STAINLESS STEEL 18-8 TYPE 316
		COTTON DUCK IMPREGNATED W/ RUBBER & VULCANIZED
6	BOTTOM COVER	CAST IRON ASTM A126 CLASS B
7	BOTTOM COVER CAP	CAST IRON ASTM A126 CLASS B
8	CAP SCREWS	STAINLESS STEEL 18-8 TYPE 304
9	TAPER PINS	STAINLESS STEEL 18-8 TYPE 316
10	LOCKWASHERS	STAINLESS STEEL 18-8 TYPE 316
11	HEX NUTS	STAINLESS STEEL 18-8 TYPE 316
12	SQUARE KEY	STEEL AISI COLD DRAWN
13	STUD-FULL THREAD	STAINLESS STEEL 18-8 TYPE 304
		STAINLESS STEEL 18-8 TYPE 316
14	THRUST COLLAR	CAST ALLOY BRONZE ASTM B-22
15	DOWEL PIN	HEAT TREATED STEEL
16	COVER GASKET	GRANITE
17	"O" RING	BUNA-N (RUBBER)
18	RUBBER SEAT	RESILOSEAL-R
19	BONNET	CAST IRON ASTM A48 CLASS 40
20	LOCKWASHERS	CARBON STEEL CAD. PLATED
21	CAP SCREWS	STEEL SAE GRADE 2 CAD. PLATED
22	PACKING RETAINER	ALUMINUM BRONZE ASTM B148 ALLOY "A"
23	PACKING GLAND	BRONZE ASTM B144 ALLOY "3B"
24	FOLLOWER	BRONZE ASTM B144 ALLOY "3B"
25	SELF LOCKING BOLTS	STEEL SAE GRADE 2 CAD. PLATED

△
△

△ 5-1-75	THW	△			
△ 3-10-72	PCJ	TH	△ 6-30-75	ULL	THW
REV. - DATE	BY	APP. ROVED	REV. - DATE	BY	APP. ROVED
PRATT			HENRY PRATT COMPANY AURORA, ILL.		
GENERAL ARRANGEMENT DRAWING TRITON XR-70 BUTTERFLY VALVE PARTS AND MATERIAL SPECIFICATIONS					
DRAWN BY <u>R.C.S.</u>		DATE <u>2-11-79</u>			
CHECKED BY <u>PCJ</u>		SCALE <u>NONE</u>			
APPROVED <u>AK/1/79</u>					

GEMS CODE:
N03-XE12

E-5490

011074

CUSTOMER: DELAVAL TURBINE, INC.
 CUSTOMER P.O.: 500289-003

FACTORY ORDER NO.: 7-5427
 PROJECT: JACKSONVILLE, FLA. #1

ITEM	QUAN.	SIZE	TAG	OPER. POSITION	OPERATOR DESCRIPTION
1	4	60"		A-4	H3BC FOR SMB00-10 MOTOR
2	4	60"		A-8	H3BC FOR SMB00-10 MOTOR
5	4	60"		A-8	H3BC FOR SMB00-10 MOTOR
6	4	60"		A-6	H3BC FOR SMB00-10 MOTOR

ITEMS 4 & 8 TO CONSIST OF (4) EA. SMB00-10 MOTORS TO BE SHIPPED LOOSE AND FIELD MOUNTED.
 ON ITEMS 1 & 5 H3BC REDUCERS BY CUSTOMER.

ITEMS 3 & 7 TO CONSIST OF (4) EA. SMB00-10 MOTORS (WITH SLIDE WIRE TRANSMITTERS AND RECEIVERS), TO BE SHIPPED LOOSE AND FIELD MOUNTED ON ITEMS 2 & 6 H3BC REDUCERS BY CUSTOMER.
 PAINT: INTERIOR OF VALVE TO BE RUBBER LINED (NONE REQUIRED).
 EXTERIOR OF VALVE AND OPERATOR - DUPONT DULUX 67-738 BROWN LEAD PRIMER, 1-COAT.

CURRENT: 460V, 60 CYCLE, 3 PHASE

TAGS: * (2) VALVES #4, (2) VALVES #1
 ** (2) VALVES #2, (2) VALVES #3
 *** (2) VALVES #8, (2) VALVES #5
 **** (2) VALVES #6, (2) VALVES #7

REV.	DATE	BY	APP. ROVED	REV.	DATE	BY	APP. ROVED
1	3-23-74	JMH		2	4-11-75	GPS	
2	5-10-75	JMH		3	2-3-75	ZCL	

PRATT & WHITNEY
 HENRY PRATT COMPANY
 AURORA, ILL.

GENERAL ARRANGEMENT DRAWING
 TRITON XR-70 BUTTERFLY VALVE
 LOW PRESSURE-REPLACEABLE PACKING BONNET
 H3BC OPERATOR - SMB MOTOR

DRAWN BY R.C.S. DATE 12-10-70
 CHECKED BY J.H.W. SCALE NONE
 APPROVED JAK

NOM. VALVE SIZE	A	B	C	D	E	F	G	H
30	21 1/4	23	38 1/2	12	2 1/2	28-1 1/4	36	9
36	25 1/4	26 1/4	46	12	2 1/2	32-1 1/4	42 1/4	9
42	29 1/4	30 1/4	53	12	2 1/2	36-1 1/4	49 1/4	10
48	32 1/4	34 1/4	59 1/4	15	2 1/2	44-1 1/4	56	10
64	36 1/4	38 1/4	66 1/4	15	3	44-1 1/4	62 1/4	10
80	39 1/4	42	73 1/4	15 1/2	3 1/2	52-1 1/4	69 1/4	10
88	43 1/4	46 1/4	80	18	3 1/2	52-1 1/4	76	11
72	46 1/4	50 1/4	86 1/4	18	3 1/2	60-1 1/4	82 1/4	11

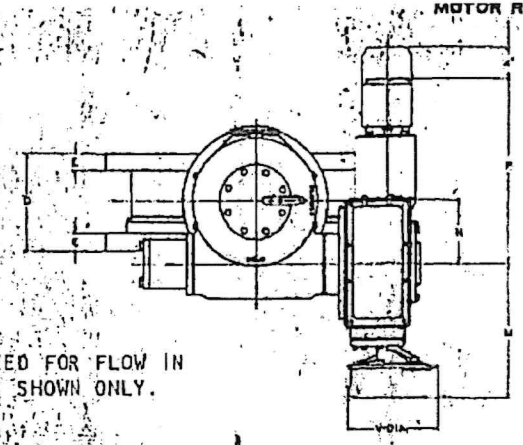
NOTES: All dimensions shown in inches.
 *D ± .005

GEAR OPERATOR	ELECTRIC MOTOR	J	L	M	N	P	Q	R	S	U	V
H3BC	SMB-00	21	6 1/4	13 1/4	3 1/2	17	1 1/2	17 1/4	23 1/4	1 1/4	12
H3BC	SMB-00	21 1/4	6 1/4	13 1/4	4 1/4	17	1 1/2	17 1/4	22 1/4	1 1/4	12
H3BC	SMB-0	21 1/4	6 1/4	17 1/4	4 1/4	23	1 1/2	14 1/4	20 1/4	1 1/4	12
H3BC	SMB-1	22 1/4	6 1/4	16 1/4	4 1/4	24 1/4	1 1/2	15 1/4	21 1/4	1 1/4	12
H3BC	SMB-00	22	6 1/4	13 1/4	6	17	1 1/2	19 1/4	25 1/4	1 1/4	12
H3BC	SMB-0	22 1/4	6 1/4	17 1/4	6	23	1 1/2	16 1/4	22 1/4	1 1/4	12
H3BC	SMB-1	23 1/4	6 1/4	16 1/4	6	24 1/4	1 1/2	16 1/4	22 1/4	1 1/4	12
H3BC	SMB-2	24 1/4	10 1/4	18 1/4	6	26 1/4	1 1/2	18 1/4	27 1/4	1 1/4	18
H3BC	SMB-0	23 1/4	10 1/4	17 1/4	7 1/4	23	1 1/2	18	24	1 1/4	12
H3BC	SMB-1	24 1/4	10 1/4	16 1/4	7 1/4	24 1/4	1 1/2	17 1/4	23 1/4	1 1/4	12
H3BC	SMB-2	25 1/4	13 1/4	18 1/4	7 1/4	26 1/4	1 1/2	19 1/4	28 1/4	1 1/4	18
H3BC	SMB-1	24 1/4	11 1/4	16 1/4	9 1/4	24 1/4	1 1/2	18 1/4	24 1/4	1 1/4	12
H3BC	SMB-2	25 1/4	11 1/4	18 1/4	9 1/4	26 1/4	1 1/2	19 1/4	29 1/4	1 1/4	18
H3BC	SMB-3	28	13 1/4	21 1/4	9 1/4	33	1 1/2	10 1/4	34	1 1/4	24
H3BC	SMB-2	26 1/4	13 1/4	18 1/4	13	26 1/4	1 1/2	17 1/4	30 1/4	1 1/4	18
H3BC	SMB-0	29 1/4	15	21 1/4	13	33	1 1/2	25 1/4	37 1/4	1 1/4	24
H3BC	SMB-4	31 1/4	16 1/4	22 1/4	13	32 1/4	1 1/2	24 1/4	36 1/4	2	24
H3BC	SMB-2	26 1/4	13 1/4	18 1/4	16	26 1/4	1 1/2	26 1/4	35 1/4	1 1/4	18
H3BC	SMB-3	29 1/4	14 1/4	21 1/4	16	33	1 1/2	28	40	1 1/4	24
H3BC	SMB-4	31 1/4	16 1/4	22 1/4	16	32 1/4	1 1/2	26 1/4	40 1/4	2	24

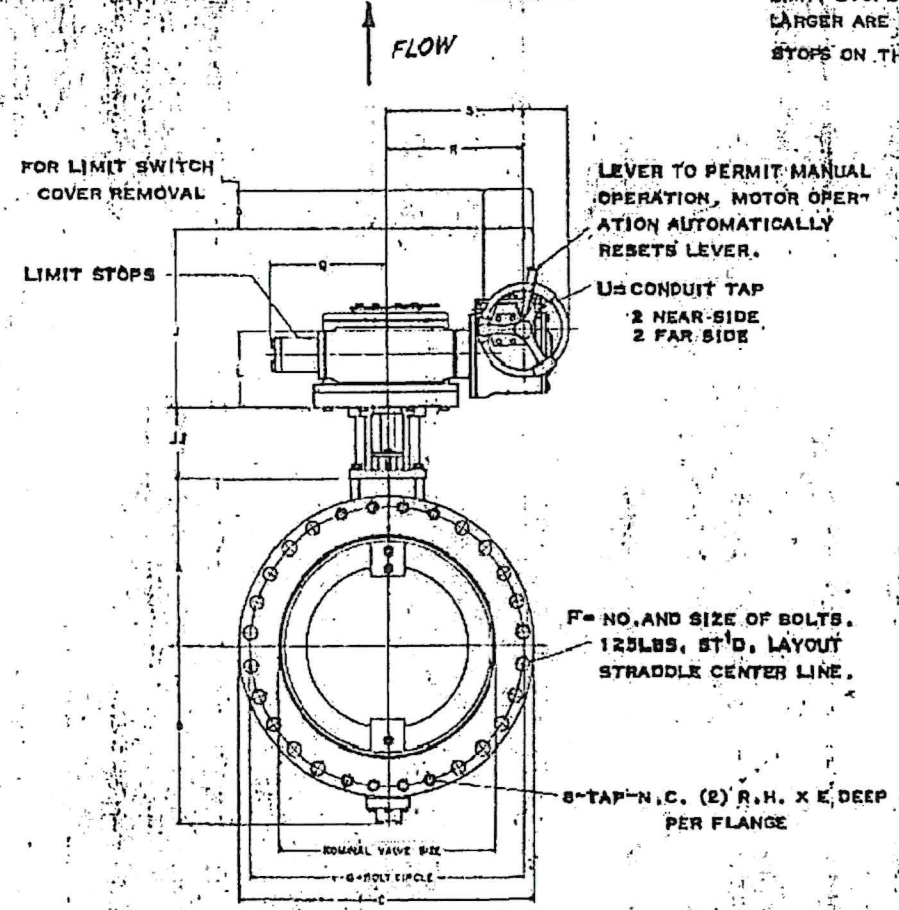
GEMS CODE: NO3-XE12

PART	MATERIAL
BODY	C-1 ASTM A-126; CL. B
DISC	ASTM B-265; CL. 92
SHAFT	SIN. STL. 18-8-T-316
SEAT	RUBBER
BEARINGS	TEFLON LINED
	BRONZE BACKED

- NOTES:
- ALL DIMENSIONS SHOWN IN INCHES. FOR BOLTS SMALLER THAN 1-3/4" DIAMETER, BOLT HOLES WILL BE 1/8" LARGER THAN DIAMETER OF BOLT. FOR BOLTS 1-3/4" DIAMETER AND LARGER, BOLT HOLES WILL BE 1/4" LARGER THAN DIAMETER OF BOLT.
 - DIMENSIONS AND DRILLING OF END FLANGES CONFORM TO THE AMERICAN CAST IRON FLANGE STANDARDS, CLASS 125 (B16.1).
 - SIZES THRU H3BC ARE EQUIPPED WITH EXTERNAL LIMIT STOPS ON THE WORM SHAFT. H4BC AND LARGER ARE EQUIPPED WITH INTERNAL LIMIT STOPS ON THE DRIVE SLEEVE.



OPERATOR SIZED FOR FLOW IN DIRECTION AS SHOWN ONLY.



DISC ROTATION TO CLOSE: VALVES W/ TAG NUMBERS 1,3,5&7 - CLOCKWISE
 VALVES W/ TAG NUMBERS 2,4,6&8 - COUNTERCLOCKWISE

