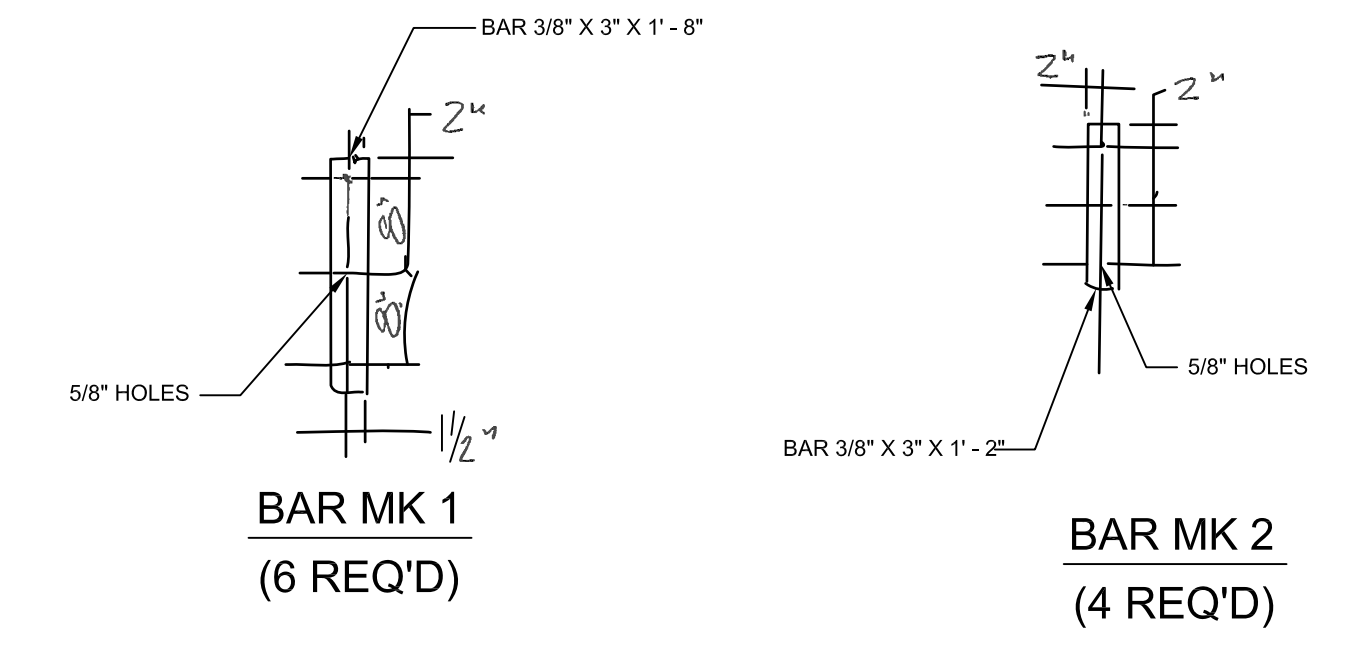
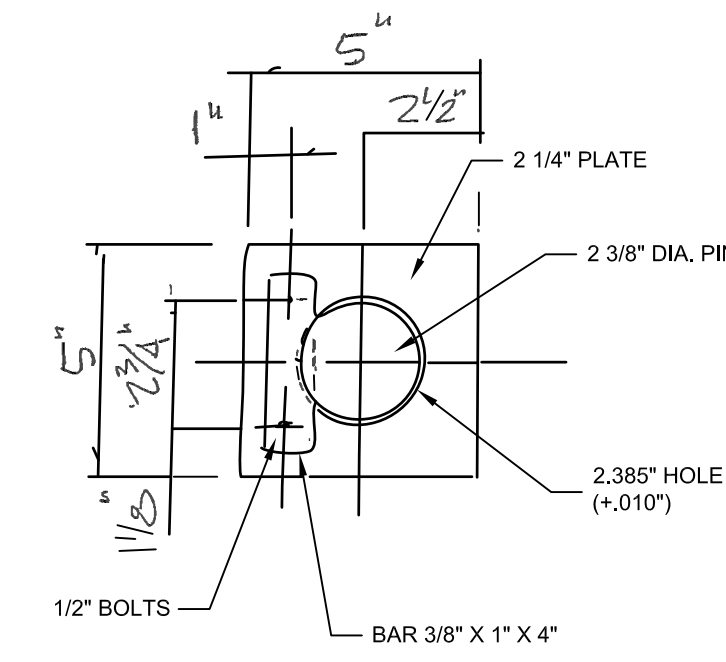
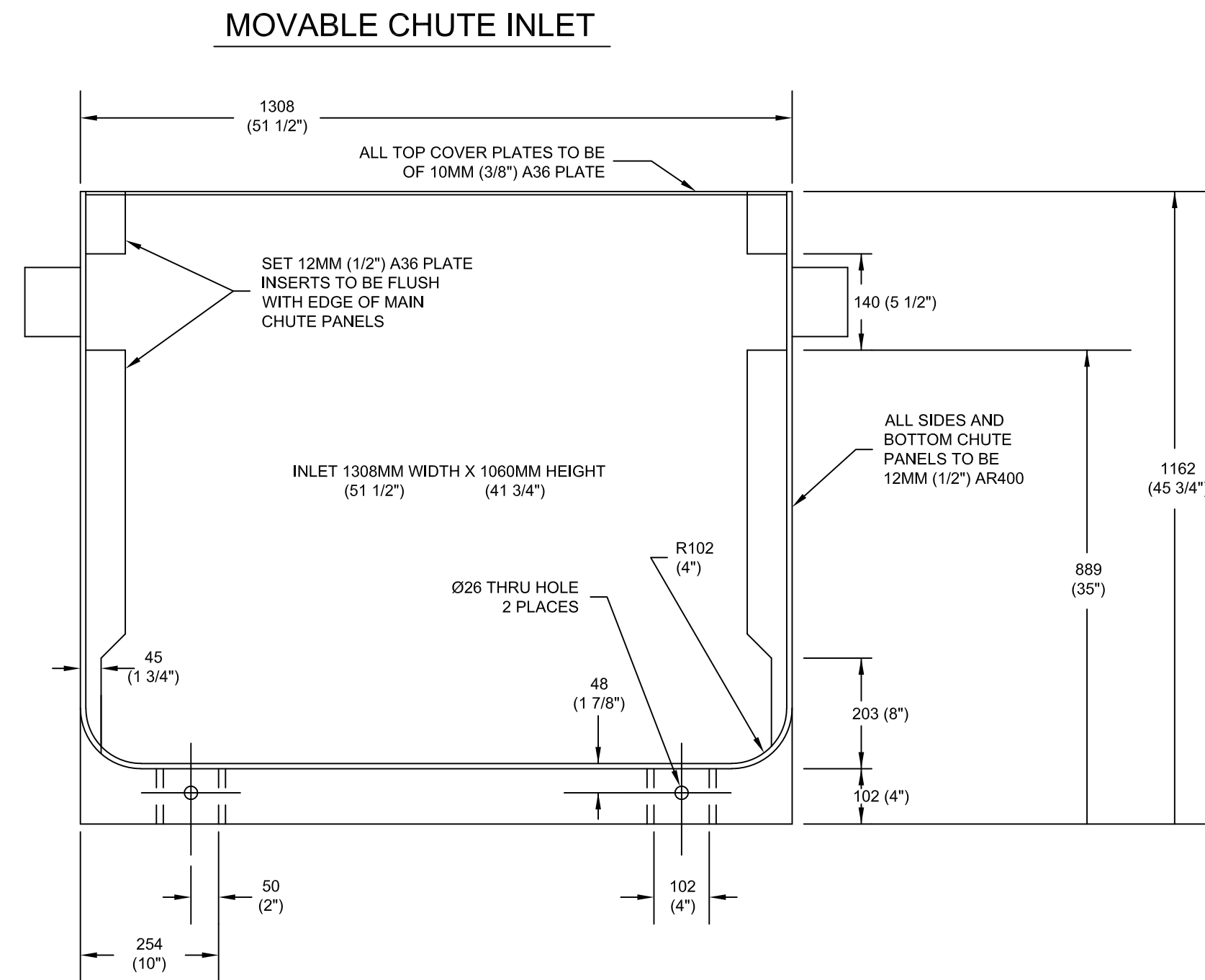
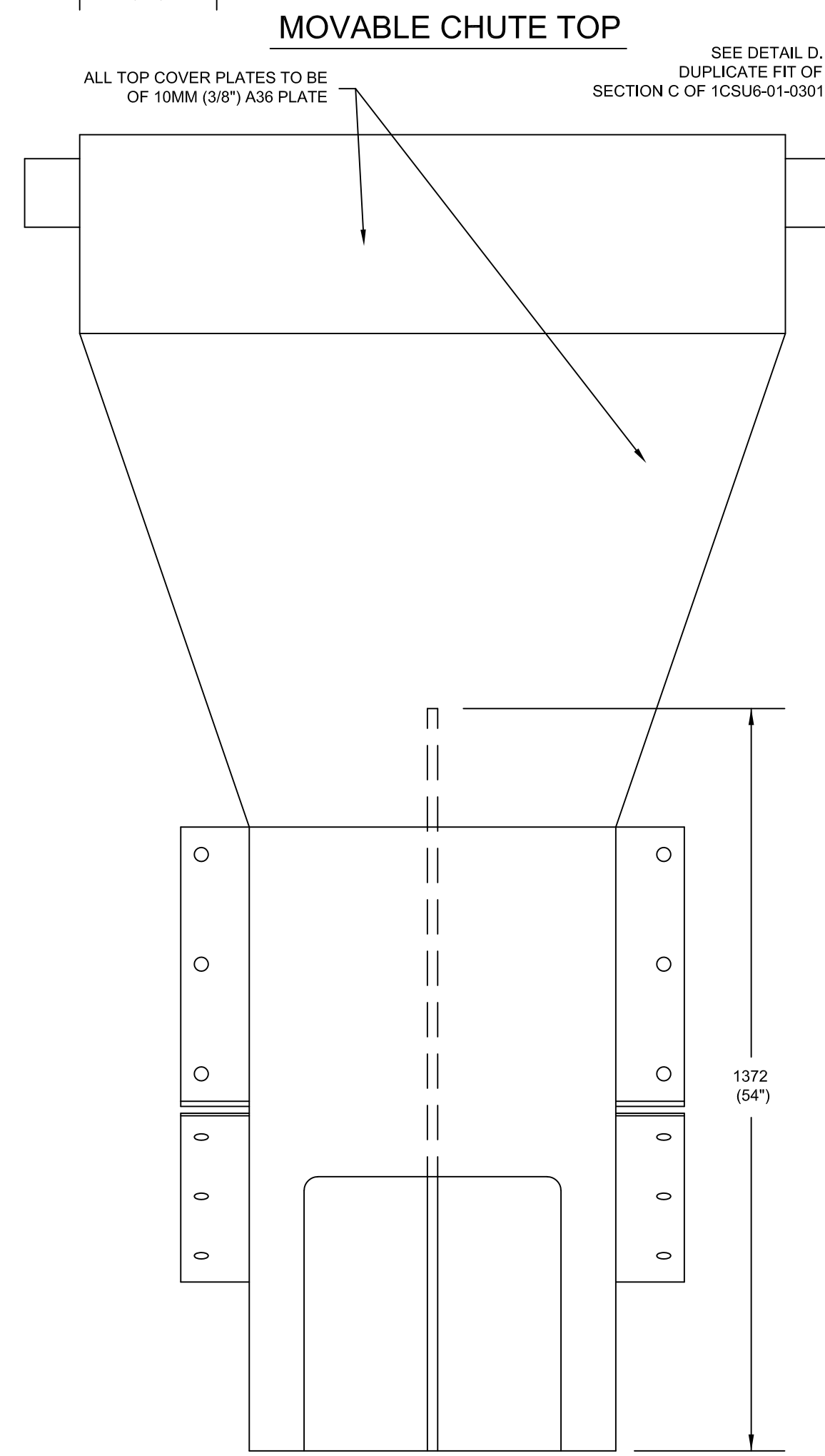
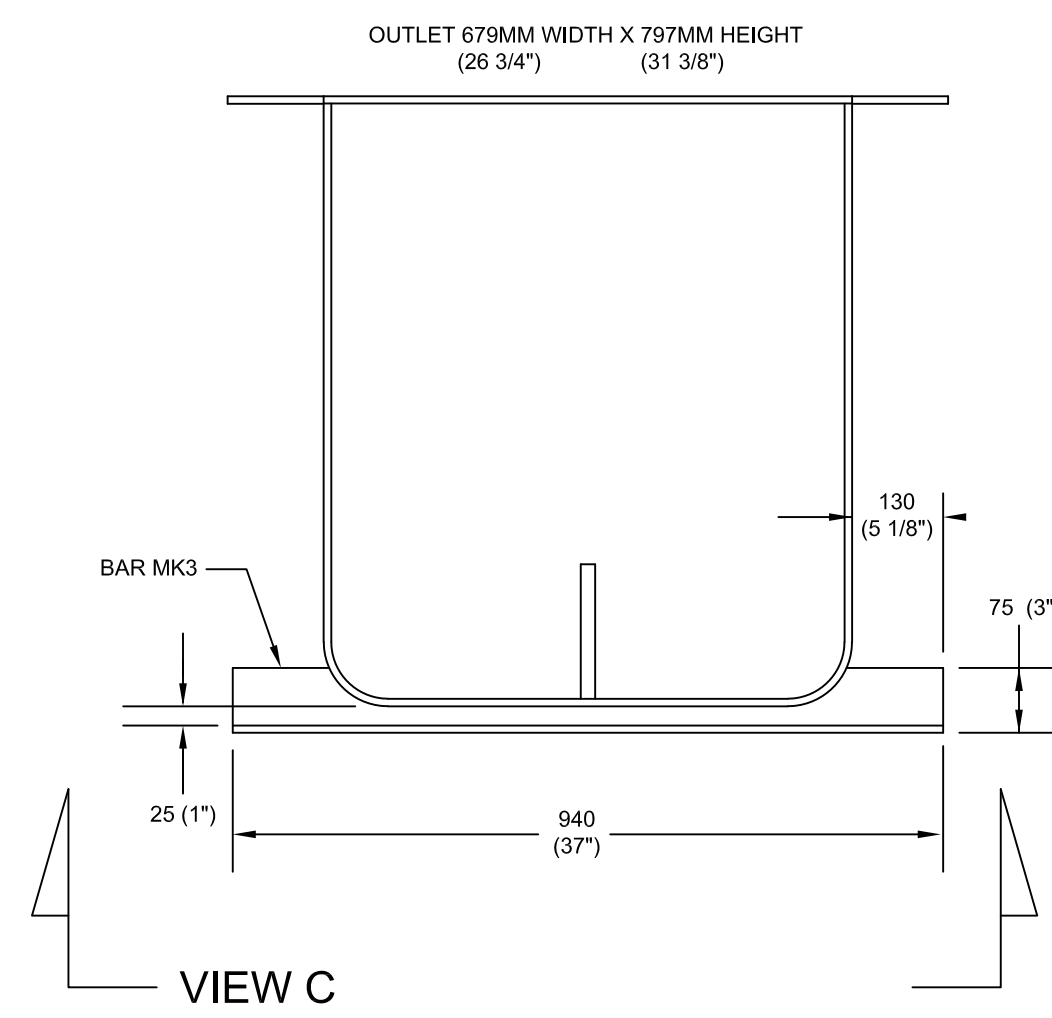


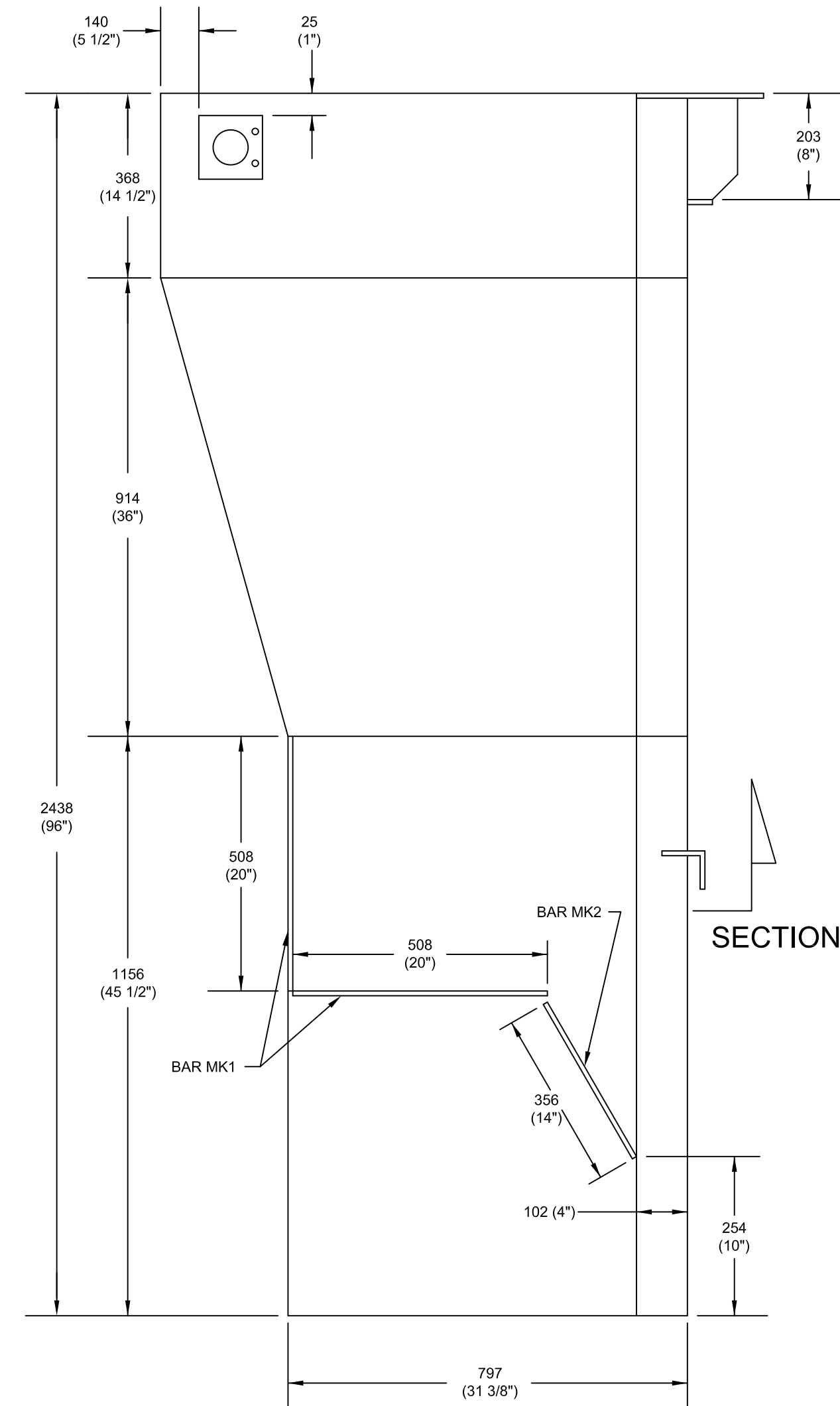
- NOTES:
1. ALL MATERIAL TO BE 10MM ($\frac{3}{8}$ ") THICK AR400 UNLESS OTHERWISE STATED.
 2. THE GIVEN INLET AND OUTLET DIMENSIONS ARE INTERIOR MEASUREMENTS.
 3. FABRICATION METHODS SHALL FOLLOW THE BEST ACCEPTED PRACTICE WITHIN THE INDUSTRY.
 4. PAINTING IS REQUIRED FOR THE COMPONENTS USING ZRC COLD GALVANIZING COMPOUND



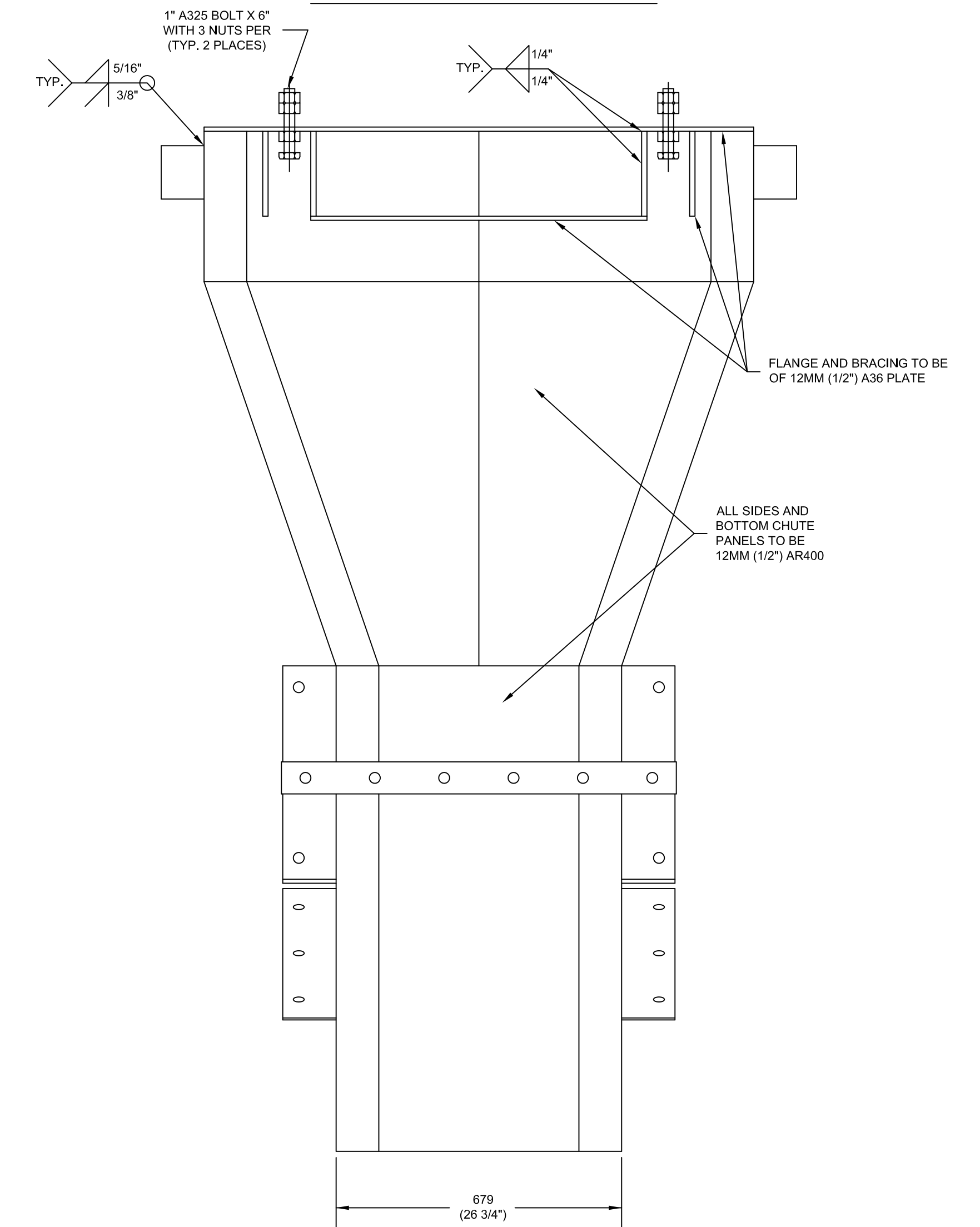
SECTION B-B



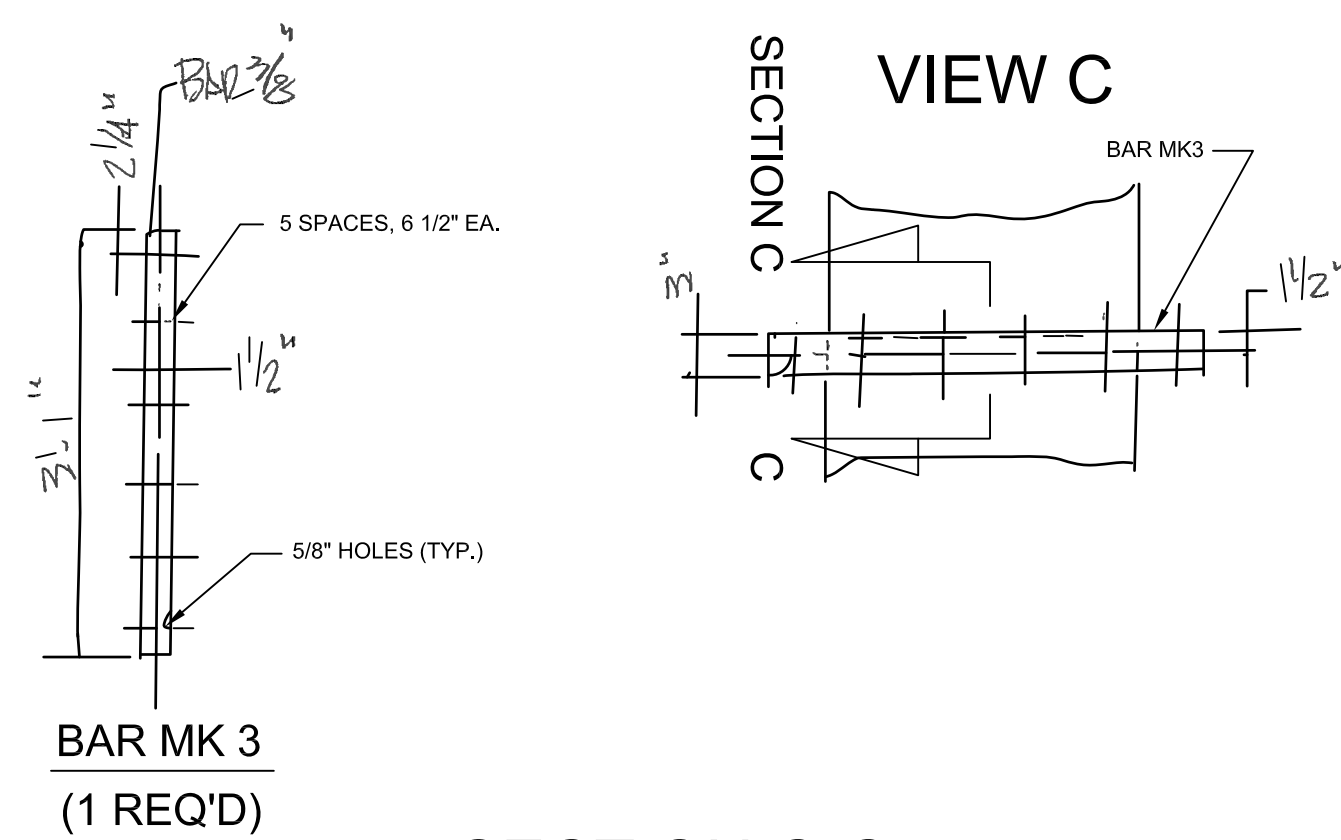
MOVABLE CHUTE SIDE



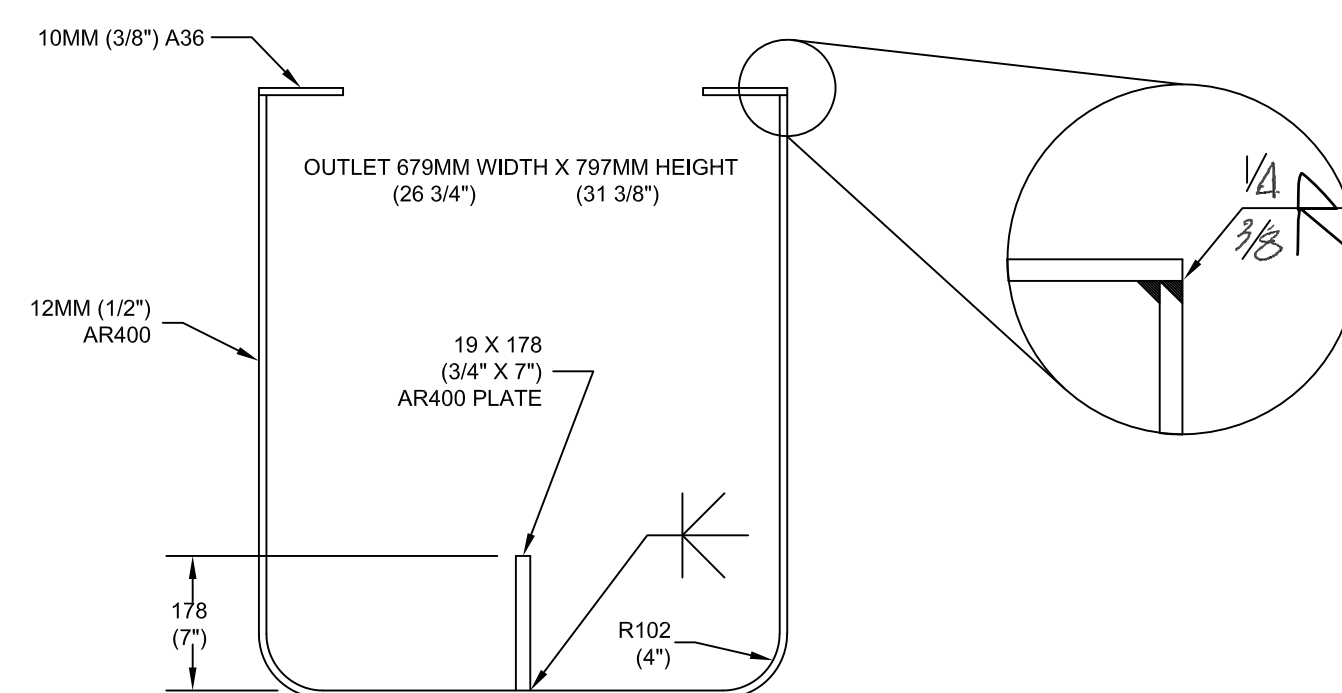
MOVABLE CHUTE BOTTOM



SECTION C-C



MOVABLE CHUTE OUTLET



CONTROL NUMBER: 309528

REV NO.	DRWN BY	DATE	DESCRIPTION	APPR BY
B	JJK	SEP-01-2021	UPDATED NOTES	-
A	JJK	AUG-27-2021	DRAWING COMPILED FROM FABRICATION DRAWINGS	-

**CONTINUOUS SHIP UNLOADER
MOVEABLE CHUTE**

JEA NORTHSIDE GENERATING STATION
Building Community

JACKSONVILLE ELECTRIC AUTHORITY

UNIT: N00
PROJECT DEF: 060-194
GEMS NO: N0#-##
SCALE: NTS
SHT. 1 OF 1

DWG. NO:
1CSU6-01-0324