

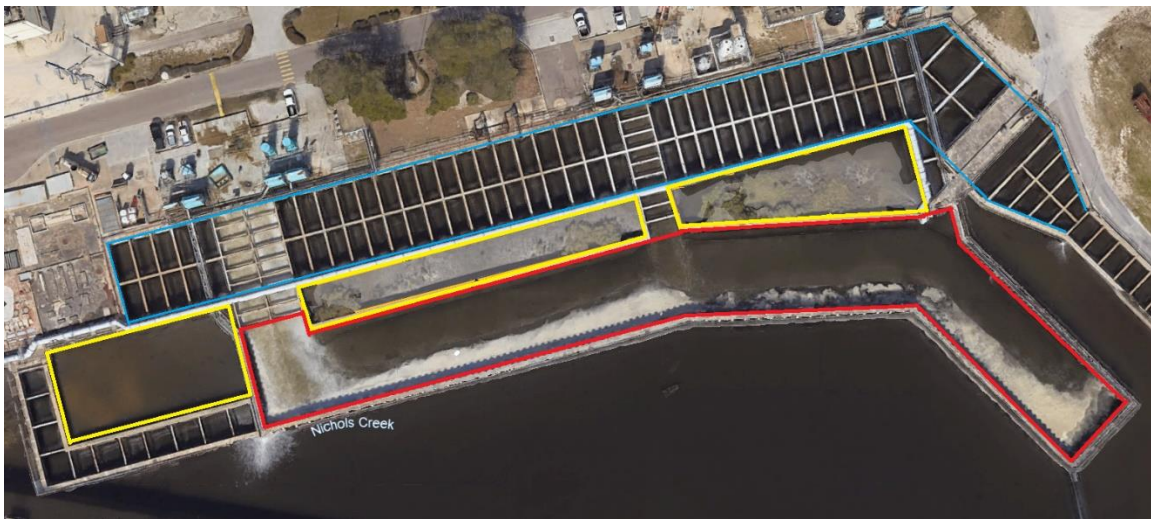
Technical Specification: NGS Discharge Flume Dredging

PREPARED BY: Miranda Johanning

DATE: 4/8/26

1.0 Work Scope

JEA is seeking a qualified contractor to remove silt and organic material from Northside Generating Station's discharge flume. The flume, outlined in red in the below aerial view, is a concrete structure, approximately 650 ft long, 60 ft wide and 30 ft deep.



Over the last decade material from the river has been accumulating in the discharge basin, settling in the structure from the river water used for cooling. A hydrographic survey completed in December of 2024 estimates 10,264 cubic yards of material within the basin.

JEA is requesting the level of material brought to the invert of the discharge pipe at elevation -28 ft to prevent damage to the support pilings. Removed material is to be disposed of in the gaps between the discharge basin and inlet flume, outlined in yellow in the above aerial view.

JEA also requests a hydrographic sonar survey performed across the discharge basin to establish the final profile after dredging. A copy of the survey should be supplied to JEA at the conclusion of the project.

2.0 Attachments

2-1 Hydrographic Survey from December 5, 2024

2-2 General Arrangement Drawings of Discharge Basin