

Tolerance On All Dimensions (+/-) 1/4"

"N" NUMBER OF HOLES	164
DESIGN TEMPERATURE	1300 DEG. (F)
DESIGN PRESSURE	+26" WC
"C" BELT I.D.	205-1/4"

NOTE: BILL OF MATERIALS REPRESENTS (1) UNIT. THERE ARE (2) UNITS ON THIS PROJECT.

THERMAL MOVEMENTS:  
LATERAL OFFSET: 2"  
AXIAL COMPRESSION: 3/4"  
AXIAL EXTENSION: 1/2"  
COLD MIS-ALIGNMENT: 0" (SEE NOTES)

RevNo	Revision note	Date	Signature	Checked

ITEM	QTY	DESCRIPTION	MATERIAL
1	1	FABRIC BELT	HT-1300
2	1	SET OF BACKUP BARS 1/2" X 2" WIDE	A-36 C.S.
3	360	3/8" NUTS, BOLTS, WASHERS	GR-2, ZINC PLATED
* 4	1	BELT SPLICE KIT (COLD BOND)	NOT SHOWN

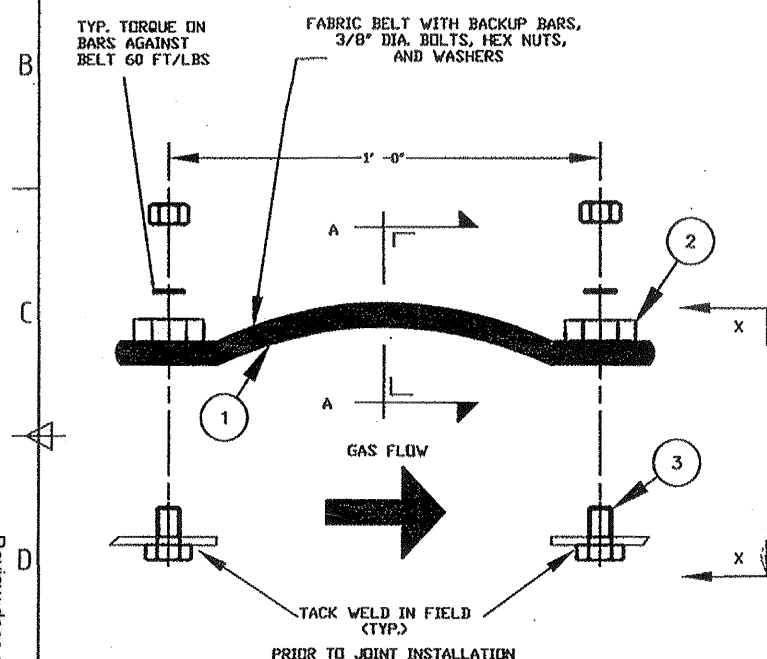
\* NOTE: COMPLETE INSTRUCTIONS FOR FIELD SPLICE OF ITEM (1) IS CONTAINED IN ITEM 4

M010322-201A168 RA

JE A BRANDY BRANCH

10/28/2002

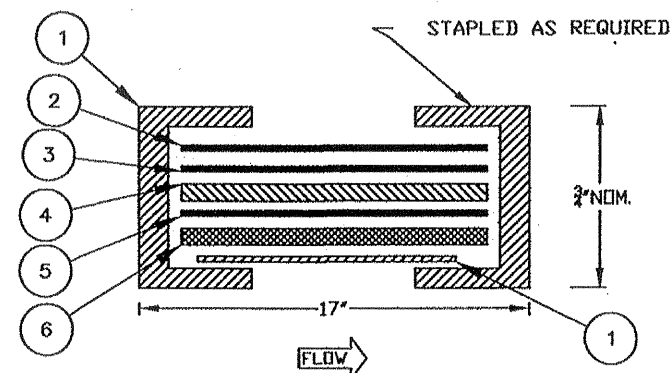
HIGH TEMPERATURE COMPOSITE BELT



164 EACH  
1/2" X 1" LONG  
SLOTTED HOLES IN BELT EQUALLY  
SPACED STRADDLE CENTERLINES. SLOTS  
ARE TO MATCH HOLES IN CASING  
(TYPICAL)

FABRIC  
BELT

"C"  
BELT  
I.D.



#1- HIGH TEMPERATURE FABRIC  
#2- ELASTOMERIC SHEET  
#3- GAS BARRIER  
#4- 1200 DEG (F) INSULATOR  
#5- HIGH TEMPERATURE FABRIC  
#6- 1800 DEG (F) INSULATOR

SECTION A-A

CUSTOMER: NOOTER ERIKSEN  
CUSTOMER ORDER NO: 17593  
CUSTOMER JOB NO: 014143  
OWNER: JACKSONVILLE  
ELECTRIC AUTHORITY

MARK "TOP CENTER" ON FIELD INSTALLED  
EXPANSION JOINT BELTS.

MULTIFAB RE: 99088  
QUANTITY: 2  
EST. WEIGHT: 216 LBS.

PAINTING AND MARKING  
1. EXTERIOR CARBON STEEL  
SURFACES TO BE SANDBLASTED TO  
SSPC-SP6 AND PRIME PAINTED WITH  
CARBOLINE ZINC 11 (GREEN) 3-5  
MILS DRY FILM THICKNESS.  
2. MARK "TOP CENTER" ON FIELD  
INSTALLED EXPANSION JOINTS BELTS.

GENERAL NOTES  
1- DO NOT WELD ON OR NEAR THE FLEXIBLE MATERIAL USED  
IN THE JOINT. WELD SPARKS OR WELDING SLAG WILL  
DAMAGE THE ELEMENT CAUSING A FAILURE OF THE PRODUCT.  
2- EXPANSION JOINT FLEX ELEMENTS HAVING BOLT HOLES  
PUNCHED IN THEIR SURFACES TO ALLOW FOR INSTALLATION,  
DO ALLOW SOME MINOR LEAKAGE IN THE JOINT. THE  
CUSTOMER SHOULD EXPECT SOME LEAKAGE.  
3- INSTALLATION OF MULTIFAB'S EXPANSION JOINTS MUST BE  
PERFORMED BY THOSE PERSONS OR COMPANIES SKILLED AND  
QUALIFIED IN THE TRADE. WE WILL NOT BE RESPONSIBLE  
FOR FAILURE OR CONSEQUENTIAL DAMAGES RESULTING FROM  
A FAILURE AS THE RESULT OF IMPROPER INSTALLATION  
METHODS OR MIS-USE OF THE PRODUCT.  
4. THE SHIPPING BARS PAINTED YELLOW ARE USED TO  
PRESET THE JOINT AT A CERTAIN DISTANCE TO ALLOW FOR  
EASE OF INSTALLATION. THESE BARS SHOULD NOT BE USED  
FOR LIFTING. PRESET OR SHIPPING BARS SHOULD NOT BE  
REMOVED UNTIL PARTIAL BALANCED INSTALLATION OF THE  
JOINT HAS BEEN ACHIEVED. THIS NOTE APPLIES ONLY WHEN  
MULTIFAB IS SUPPLYING FULLY ASSEMBLED EXPANSION  
JOINTS.  
5- THE UPSTREAM AND DOWNSTREAM CONNECTIONS FOR THE EXPANSION JOINT  
MUST BE SUPPORTED PROPERLY PRIOR TO JOINT INSTALLATION.

SECTION  
X-X

NOOTER / ERIKSEN INC.  
VENDOR SUBMITTAL REVIEW

REVIEW OF VENDOR DRAWINGS DOES NOT RELIEVE THE VENDOR OF RESPONSIBILITIES FOR ACCURACY OF DIMENSIONS AND COMPLIANCE TO CODES, NOTED ENGLISH SPECIFICATIONS AND P.D. REQUIREMENTS				
<input checked="" type="checkbox"/>	A REVIEWED AND ACCEPTED			
<input type="checkbox"/>	B REVIEWED WITH COMMENTS (WORK MAY PROCEED)			
<input type="checkbox"/>	C REVISE AND RESUBMIT (WORK MAY NOT PROCEED)			
<input type="checkbox"/>	D REVIEWED FOR INFORMATION ONLY			
RELEASE DATE: 10-21-02		REVIEWERS INITIALS: JKR/RA		
PROJECT: JEA BRANDY		JOB NO.	CODE	SHT
DRAWING NO. 014143-EJ-003		REV	FE	

THIS DRAWING HAS BEEN FURNISHED BY  
MULTIFAB, INC. THE INFORMATION,  
KNOW HOW, AND ALL NEW AND  
PATENTABLE FEATURES ARE THE  
PROPERTY OF MFI AND MUST NOT BE  
COPIED WITH OUT PERMISSION. THE  
FOREGOING IN NO WAY APPLIES TO  
DESIGNS OR FEATURES WHICH ARE OUR  
CUSTOMERS PROPERTY.

Itemref	Quantity	Title/Name, designation, material, dimension etc	Article No./Reference
Designed by BT	Checked by IA	Approved by - date	File name 99088
MULTIFAB, INC. 1200 ELMWOOD AVENUE SHARON HILL, PA 19079 (610) 534-2000		DUCT BOX INLET EXPANSION JOINT	
99088-201		Edition	Sheet 1

Review does not relieve  
contractor from responsibility  
for errors or deviations  
from contract requirements

UTILITY  
ENGINEERING

NO EXCEPTIONS NOTED  
Release for manufacture

EXCEPTIONS NOTED  
Release for manufacture

RETURNED FOR CORRECTION  
Revise and resubmit for authorization