

ELEVATION LOOKING @ COLUMN 'A' WALL LINERS
(AS SHOWN)
ELEVATION LOOKING @ COLUMN 'B' WALL LINERS
(OPP HAND)

Review does not relieve
contractor from responsibility
for errors or deviations
from contract requirements

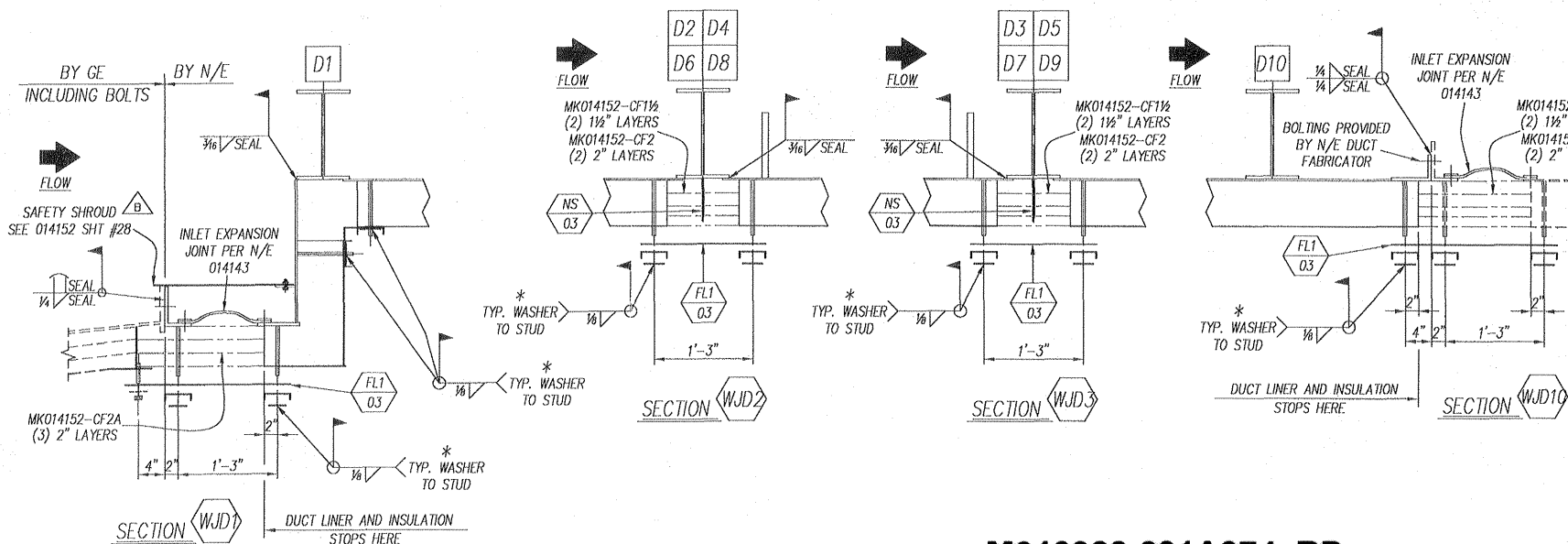
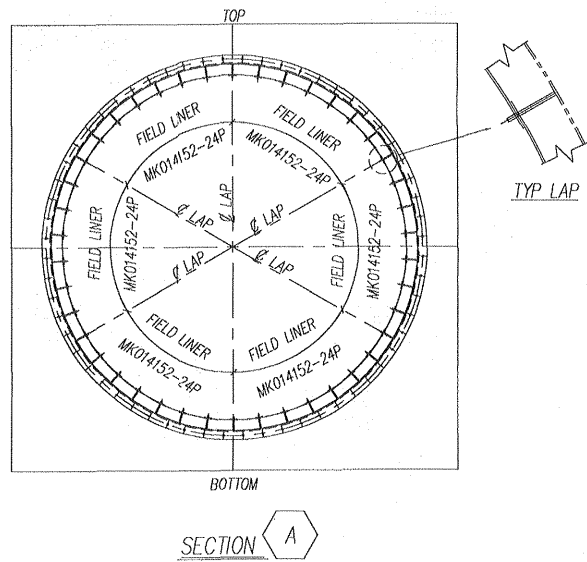
**UTILITY
ENGINEERING**

Donny J. ...

- ☒ NO EXCEPTIONS NOTED
Release for manufacture
- ☐ EXCEPTIONS NOTED
Release for manufacture
Revise and resubmit for distribution
- ☐ RETURNED FOR CORRECTION
Do not proceed
Revise and resubmit for authorization

NOTE: ALL INSUL IS LISTED
ON 014152-FS-003

* BATTEN CHANNELS, CHANNEL WASHERS &
LINER WASHERS ARE SHOP ATTACHED
TO WALL, FLOOR & ROOF PANELS WITH
REMOVABLE PUSH NUTS. FIELD WILL REMOVE
PUSH NUTS, LINER WASHERS, BATTEN CHANNELS &
CHANNEL WASHERS PRIOR TO INSTALLING FIELD SEAM
LINERS. FIELD SEAM LINERS AND INSULATION
FURNISHED BY FIELD SEAM SUPPLIER.
FINAL ASSEMBLY PER FIELD ERECTION DETAILS.



TOTAL OF (2) HRS'G'S REQUIRED

| REV | DATE | REVISION | BY | CHK |
|--|----------|--|----|-----|
| D | 11/26/02 | BOTT OF BASE R COL 1 THRU 7 NOW @ EL 0'-1" | JA | KA |
| C | 11/15/02 | REVISED DIMENSIONS | JA | KA |
| B | 9/24/02 | ADDED SAFETY SHROUD | JA | KA |
| A | 6/18/02 | INITIAL RELEASE | JA | KA |
| REV | DATE | REVISION | BY | CHK |
| NOTER/ERIKSEN INC. VENDOR SUBMITTAL REVIEW | | | | |
| REVIEW OF VENDOR DRAWINGS DOES NOT RELIEVE THE VENDOR OF RESPONSIBILITIES FOR ACCURACY OF DIMENSIONS AND COMPLIANCE TO CODES, NOTER/ERIKSEN SPECIFICATIONS AND P.O. REQUIREMENTS | | | | |
| <input checked="" type="checkbox"/> | A | REVIEWED AND ACCEPTED | | |
| <input checked="" type="checkbox"/> | B | REVIEWED WITH COMMENTS (WORK MAY PROCEED) | | |
| <input type="checkbox"/> | C | REVISE AND RESUBMIT (WORK MAY NOT PROCEED) | | |
| <input type="checkbox"/> | D | REVIEWED FOR INFORMATION ONLY | | |
| RELEASE DATE: 12-02-02 REVIEWERS INITIALS: JK RE | | | | |

| NE NOTER/ERIKSEN | | | | |
|--|---------------|--------|------|------------------------------|
| DWN | JA | CHK | KA | INLET DUCT WALL LINER LAYOUT |
| PM | MHK | PE | GDW | |
| SE | KWM | TE | BCS | |
| OWNER: JACKSONVILLE ELECTRIC AUTHORITY (JEA) PURCHASER: BEAR PROJECT: BRANDY BRANCH PLANT SITE: BALDWIN, FL | | | | |
| PROJECT: | JEA BRANDY | JOB NO | CODE | SHT |
| DRAWING NUMBER | 014152-FS-021 | REV | FE | |

M010322-201A074 RD
JEA BRANDY BRANCH

12/11/2002