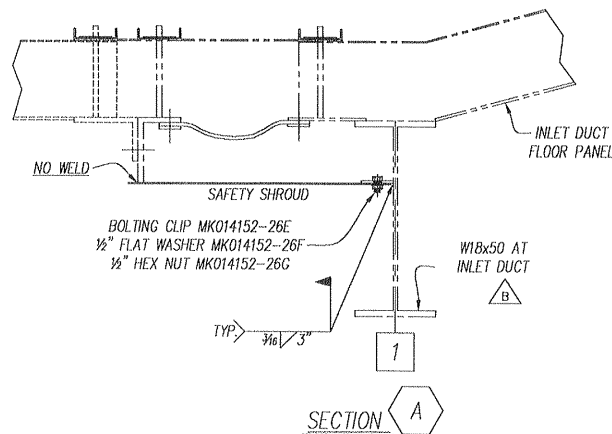
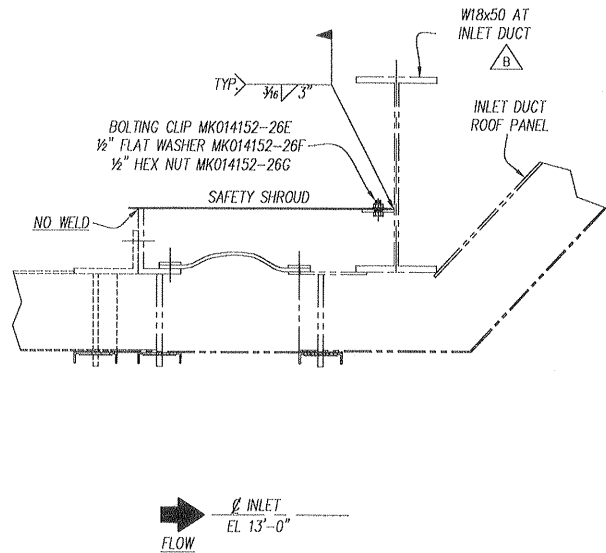
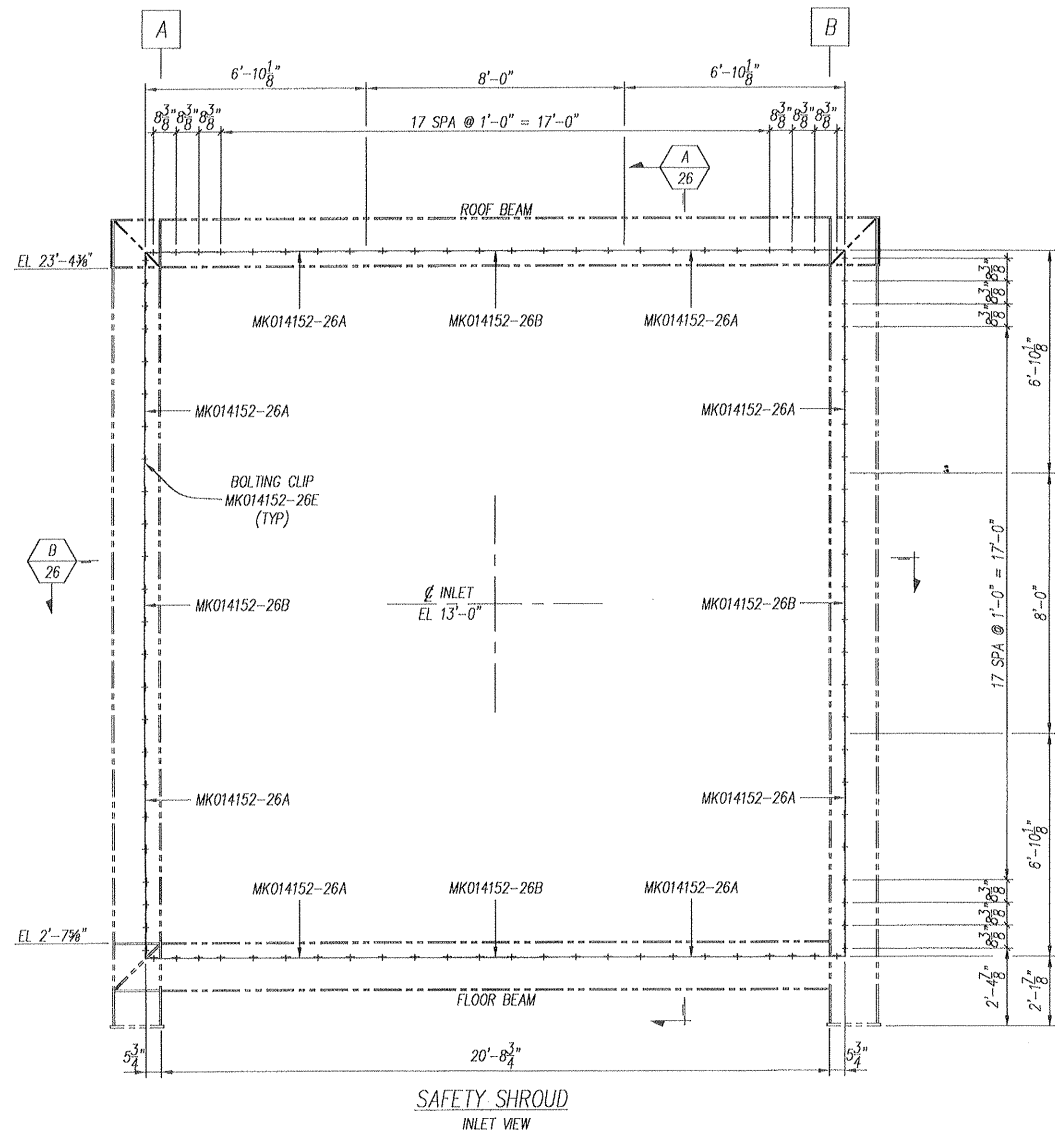
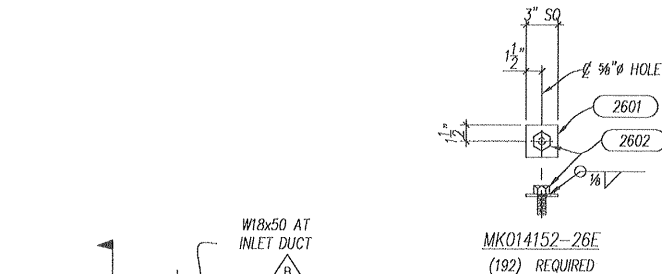
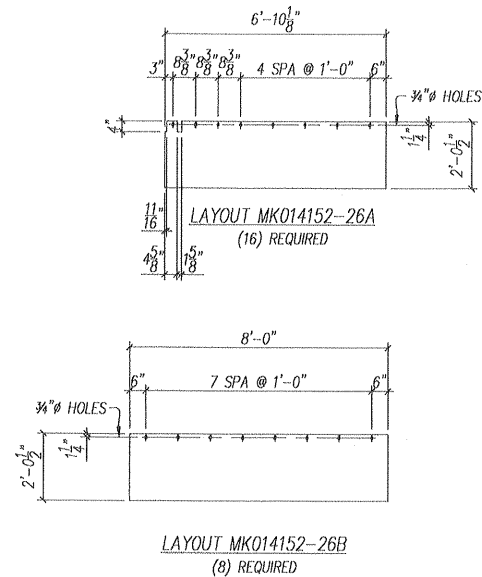
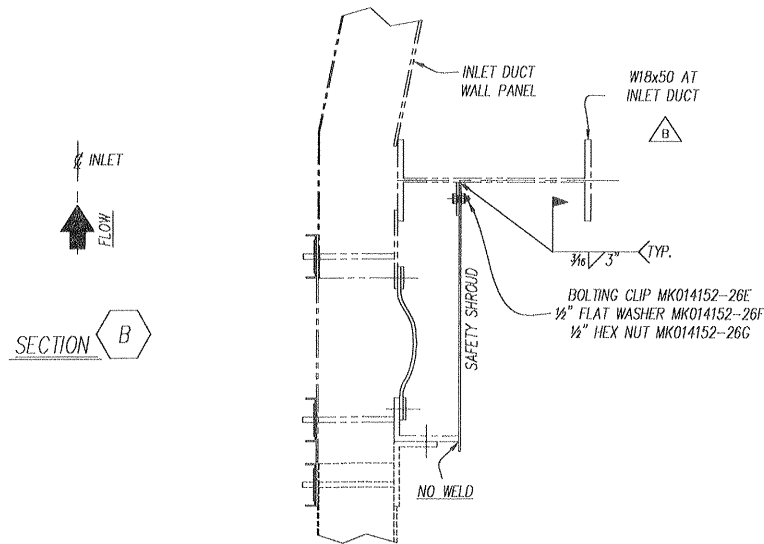
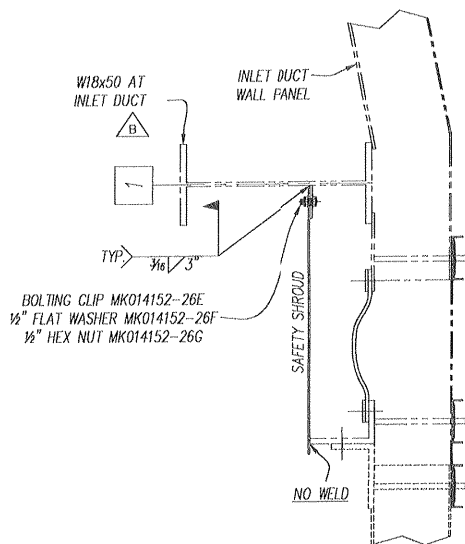


PROJECT:	JEA BRANDY
DRAWING NUMBER	014152-FS-026
JOB NO	014152-FS-026
CODE	B
SHT	1
REV	1



BILL OF MATERIAL				
PC. MK.	QUAN.	DESCRIPTION	MATERIAL	REMARKS
SC MK014152-26A	16	3/4\" NO. 18 FLATTENED EXPANDED METAL 24 1/2\" x 82 1/2\"	A569 GALV	
SC MK014152-26B	8	3/4\" NO. 18 FLATTENED EXPANDED METAL 24 1/2\" x 96\"	A569 GALV	
SC 192		BOLTING CLIP MK014152-26E		
2601	192	BAR 1/4\" x 3\" x 3\"	A36	
2602	192	1/2\" x 1 1/2\" HEX BOLTS	A307	
SC MK014152-26E	200	1/2\" FLAT WASHERS	C.S.	5% ADDED
SC MK014152-26F	200	1/2\" x HEX NUTS	A307	5% ADDED

SPECIAL NOTES:
1.) MAT'L LISTED FOR (2) UNITS
(2) UNITS REQ'D.

M010322-201A164 RB
JEA BRANDY BRANCH
2/10/2003

Review does not relieve contractor from responsibility for errors or deviations from contract requirements

UTILITY ENGINEERING

CJB 2/11/03

☐ NO EXCEPTIONS NOTED
Release for manufacture

☐ EXCEPTIONS NOTED
Release for manufacture
Revise and resubmit for distribution

☐ RETURNED FOR CORRECTION
Do not proceed
Revise and resubmit for authorization

TOTAL OF (2) HRSG'S REQUIRED				
B	1/6/03	REVISED CALLOUT	SL	KA
A	9/24/02	INITIAL RELEASE	JA	KA
REV	DATE	REVISION	BY	CHK
NOTOER/ERIKSEN INC. VENDOR SUBMITTAL REVIEW				
REVIEW OF VENDOR DRAWINGS DOES NOT RELIEVE THE VENDOR OF RESPONSIBILITIES FOR ACCURACY OF DIMENSIONS AND COMPLIANCE TO CODES, NOTOER/ERIKSEN SPECIFICATIONS AND P.O. REQUIREMENTS				
<input checked="" type="checkbox"/> A	REVIEWED AND ACCEPTED			
<input type="checkbox"/> B	REVIEWED WITH COMMENTS (WORK MAY PROCEED)			
<input type="checkbox"/> C	REVISE AND RESUBMIT (WORK MAY NOT PROCEED)			
<input type="checkbox"/> D	REVIEWED FOR INFORMATION ONLY			
RELEASE DATE: 1-17-03		REVIEWERS INITIALS: JKA		
THIS DRAWING HAS BEEN FURNISHED BY NOTOER/ERIKSEN INC. THE INFORMATION HEREON IS FOR INFORMATION ONLY AND IS NOT TO BE USED FOR ANY OTHER PURPOSES WITHOUT THE WRITTEN PERMISSION OF NOTOER/ERIKSEN INC. AND MUST NOT BE COPIED OR REPRODUCED WITHOUT PERMISSION. THE FOREGOING IN NO WAY APPLIES TO DESIGN AND FEATURES WHICH ARE OUR CUSTOMER'S PROPERTY.				
NE NOTOER/ERIKSEN				
DWN JA	CHK KA	INLET EXPANSION JOINT SAFETY SHROUD		
PM MHW	PE GBW	OWNER: JACKSONVILLE ELECTRIC AUTHORITY (JEA)		
SE KHM	TE BCS	PURCHASER: JEA / UTILITY ENGINEERING		
PROJECT:		PROJECT: BRANDY BRANCH		
JEA BRANDY		PLANT SITE: BALDWIN, FL		
DRAWING NUMBER	014152-FS-026	JOB NO	CODE	SHT
		REV	FE	