

M010322-201A075 RC
JEA BRANDY BRANCH
12/3/2002

PROJECT:	JEA BRANDY
DRAWING NUMBER:	014152-FS-022
JOB NO. CODE SHT:	014152-FS-022
REV:	FE

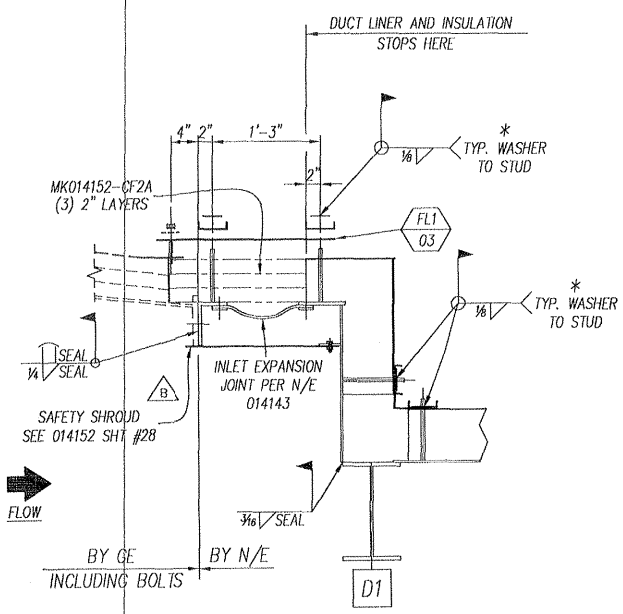
FLOOR LINER VIEW

Review does not relieve contractor from responsibility for errors or deviations from contract requirements

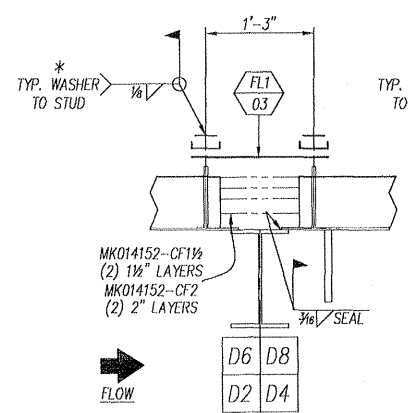
UTILITY ENGINEERING

MRW

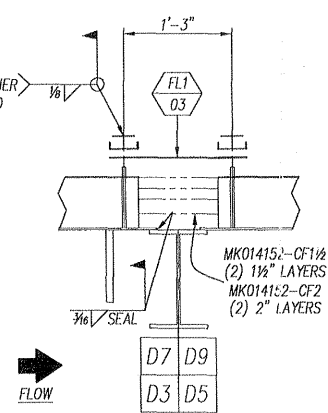
- ☒ NO EXCEPTIONS NOTED
Release for manufacture
- ☐ EXCEPTIONS NOTED
Release for manufacture
Revise and resubmit for distribution
- ☐ RETURNED FOR CORRECTION
Do not proceed
Revise and resubmit for authorization



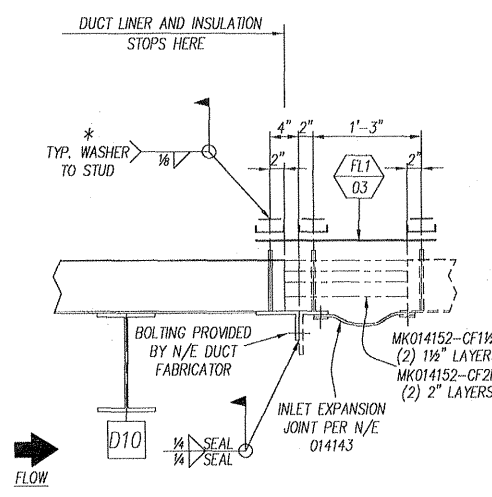
SECTION FJD1



SECTION FJD2



SECTION FJD3



SECTION FJD10

NOTE: ALL INSUL IS LISTED ON 014152-FS-003

* BATTEN CHANNELS, CHANNEL WASHERS & LINER WASHERS ARE SHOP ATTACHED TO WALL, FLOOR & ROOF PANELS WITH REMOVABLE PUSH NUTS. FIELD WILL REMOVE PUSH NUTS, LINER WASHERS, BATTEN CHANNELS & CHANNEL WASHERS PRIOR TO INSTALLING FIELD SEAM LINERS. FIELD SEAM LINERS AND INSULATION FURNISHED BY FIELD SEAM SUPPLIER. FINAL ASSEMBLY PER FIELD ERECTION DETAILS.

TOTAL OF (2) HRS'S REQUIRED

REV	DATE	REVISION	BY	CHK
C	11/15/02	REVISED DIMENSIONS	JA	KA
B	9/24/02	ADDED SFTY SHROUD	JA	KA
A	6/18/02	INITIAL RELEASE	JA	KA
REV	DATE	REVISION	BY	CHK
NOOTER/ERIKSEN INC. VENDOR SUBMITTAL REVIEW				
A		REVIEWED AND ACCEPTED		
B		REVIEWED WITH COMMENTS (WORK MAY PROCEED)		
C		REVISE AND RESUBMIT (WORK MAY NOT PROCEED)		
D		REVIEWED FOR INFORMATION ONLY		
RELEASE DATE:	12-23-02	REVIEWERS INITIALS:	UK	IR
THIS DRAWING HAS BEEN FORWARDED BY NOOTER/ERIKSEN INC. THE INFORMATION HEREIN, AND ALL NEW OR PATENTABLE FEATURES ARE THE PROPERTY OF NOOTER/ERIKSEN INC. AND MUST NOT BE COPIED OR REPRODUCED WITHOUT PERMISSION. THE FOREGOING IN NO WAY APPLIES TO DESIGN AND FEATURES WHICH ARE OUR CUSTOMER'S PROPERTY.				
NE NOOTER/ERIKSEN				
DWN	JA	CHK	KA	
PM	MWK			
PE	GBW			
SE	KWM			
TE	BCS			
PROJECT:	JEA BRANDY	JOB NO. CODE SHT	014152-FS-022	REV FE
DRAWING NUMBER	014152-FS-022	C		