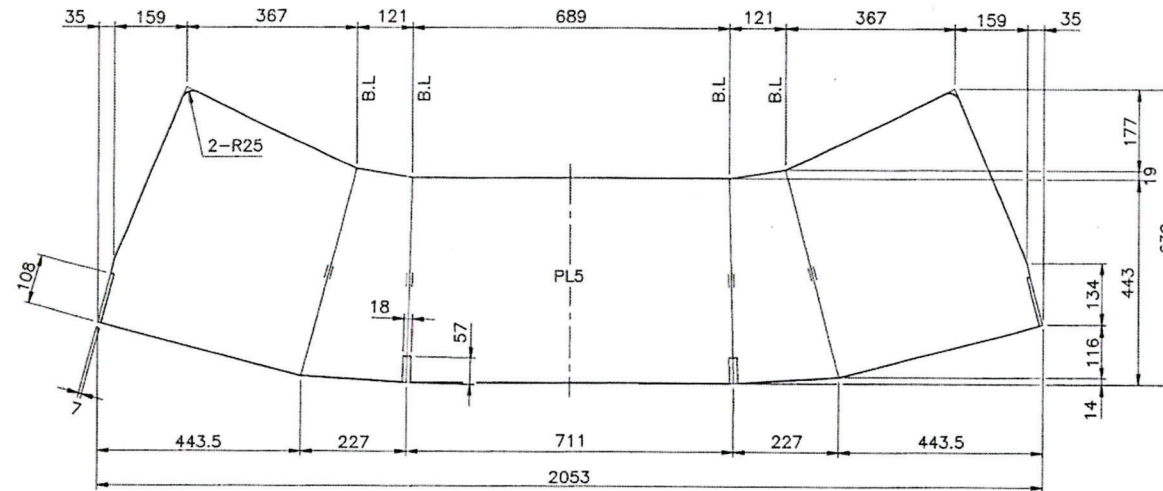
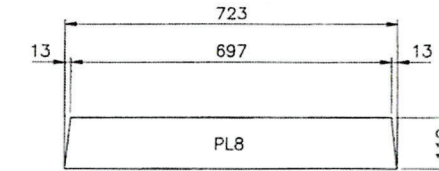


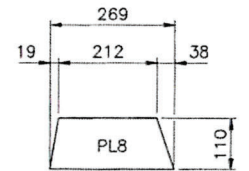
DETAIL 1



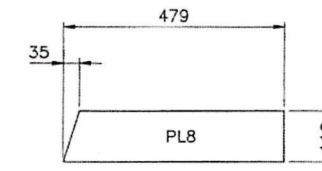
DETAIL 2



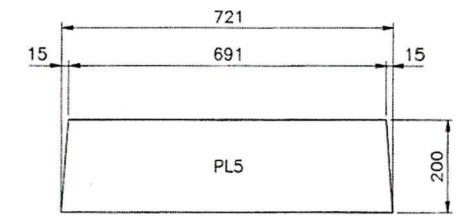
DETAIL 3



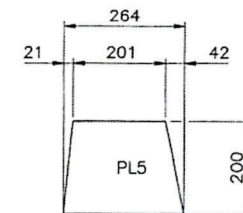
DETAIL 4



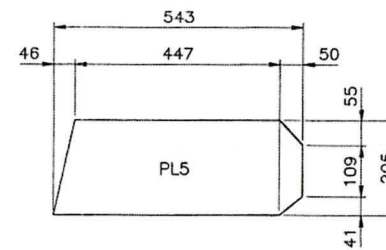
DETAIL 5



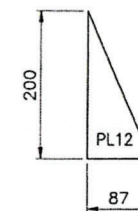
DETAIL 6



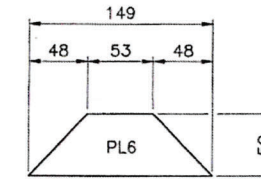
DETAIL 7



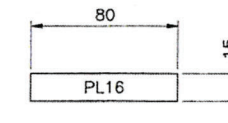
DETAIL 8



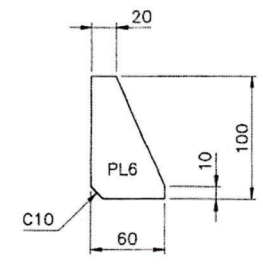
DETAIL 9
(S=1/5)



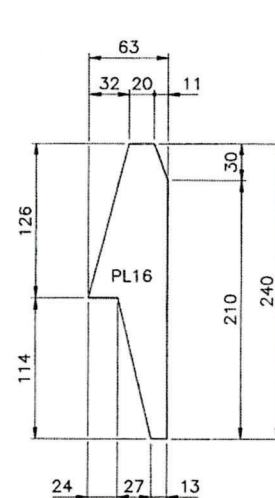
DETAIL 10
(S=1/3)



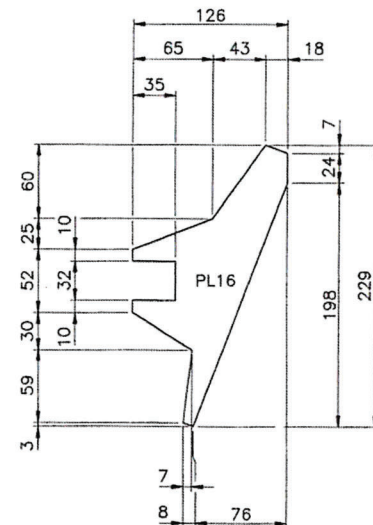
DETAIL 13
(S=1/2)



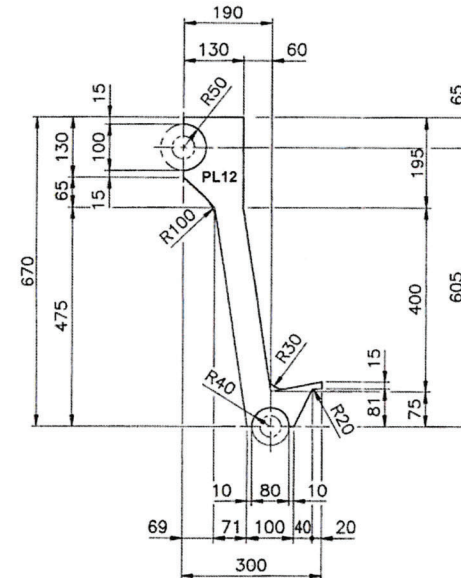
DETAIL 20
(S=1/3)



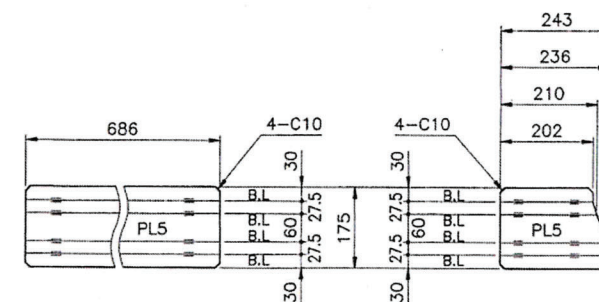
DETAIL 11
(S=1/3)



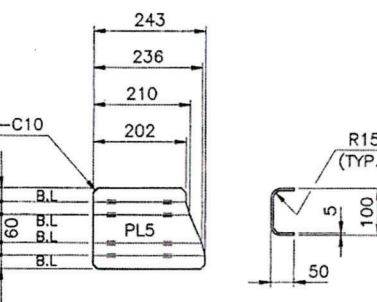
DETAIL 12
(S=1/3)



DETAIL 16



DETAIL 18

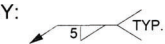


DETAIL 19

(271가 서보 좌우 대칭) (AS SHOWN : 1EA)
(좌우측 제작할것.) (OPP. HAND : 1EA)

NOTE:

1. PRIOR TO CUTTING THE RAW MATERIALS, MANUFACTURER SHOULD MAKE ONE (1) SAMPLE BUCKET.
2. UNLESS OTHERWISE SPECIFIED WELD BY:



ALL DIMENSIONS ARE METRIC

REF: HANJUNG (JEA CONTROL NUMBER: 307426)

DATE	DESCRIPTION	APPR BY
12/19/25	SHIP UNLOADER BUCKET 300L	RWS

CONTINUOUS SHIP UNLOADER
BUCKET 300L (2 of 3)

JEA
Building Community

CONTROL NUMBER: 309995
UNIT: NOO
SCALE: N.T.S.
DWG. NO.: 1CSU6-01-0702_JEA 2