

- NOTES:
- 1. STANDARD ROLLER ASSEMBLY PATTERN WILL FOLLOW THE PATTERN OF TWO (2) STANDARD PINS FOLLOWED BY THREE (3) LONG PINS. SEE DWG 1CSU6-02-0002.
  - 2. REQUIRED QUANTITIES LISTED IN THIS DRAWING ARE THE NUMBER OF PIECES REQUIRED PER BUCKET.
  - 3. FABRICATION METHODS SHALL FOLLOW THE BEST ACCEPTED PRACTICE WITHIN THE INDUSTRY AND SHALL BE IN ACCORDANCE WITHIN THE AISC "SPECIFICATION FOR DESIGN, FABRICATION, AND ERECTION OF STRUCTURAL STEEL FOR BUILDING," LATEST EDITION.
  - 4. USE NGLI #2 THIXOGREASE FOR ASSEMBLY AND LUBRICATION.

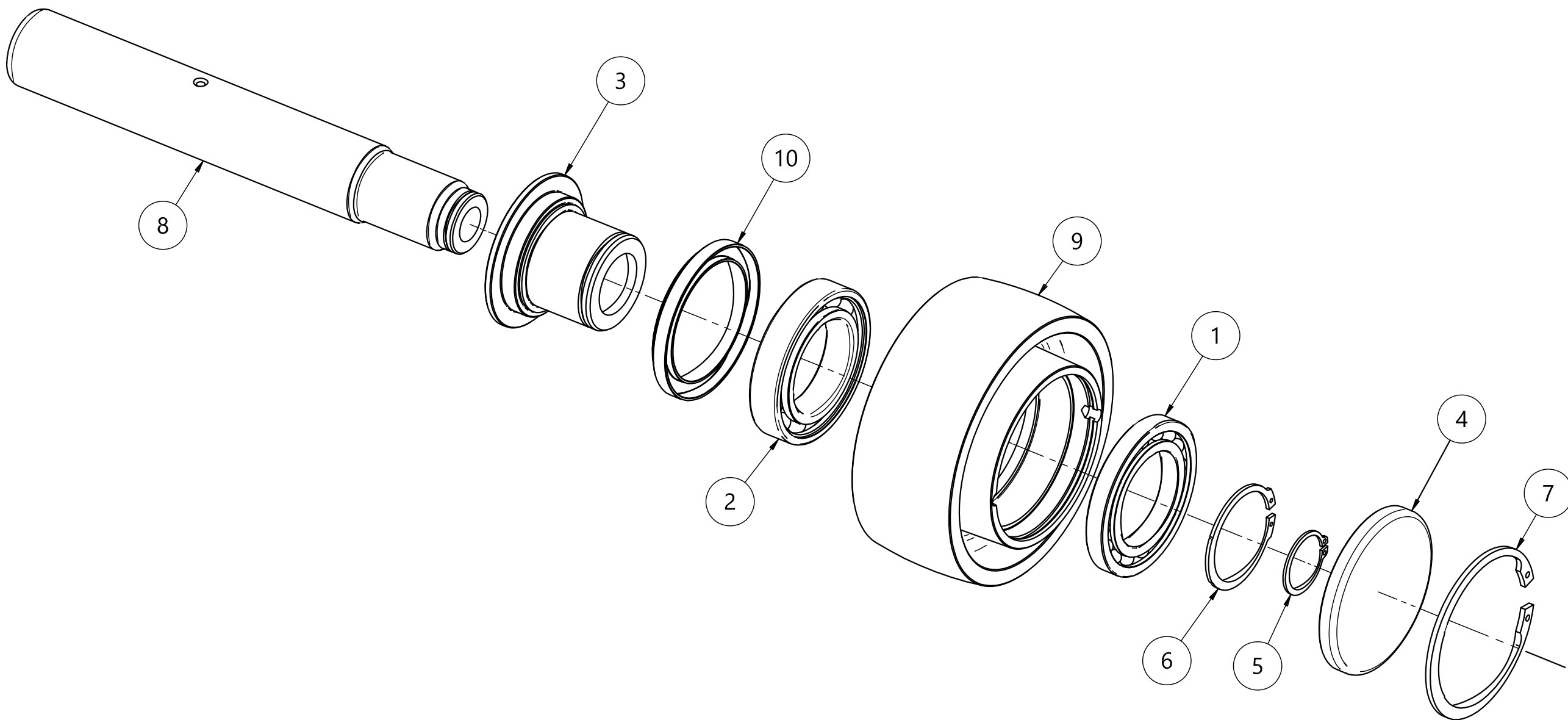
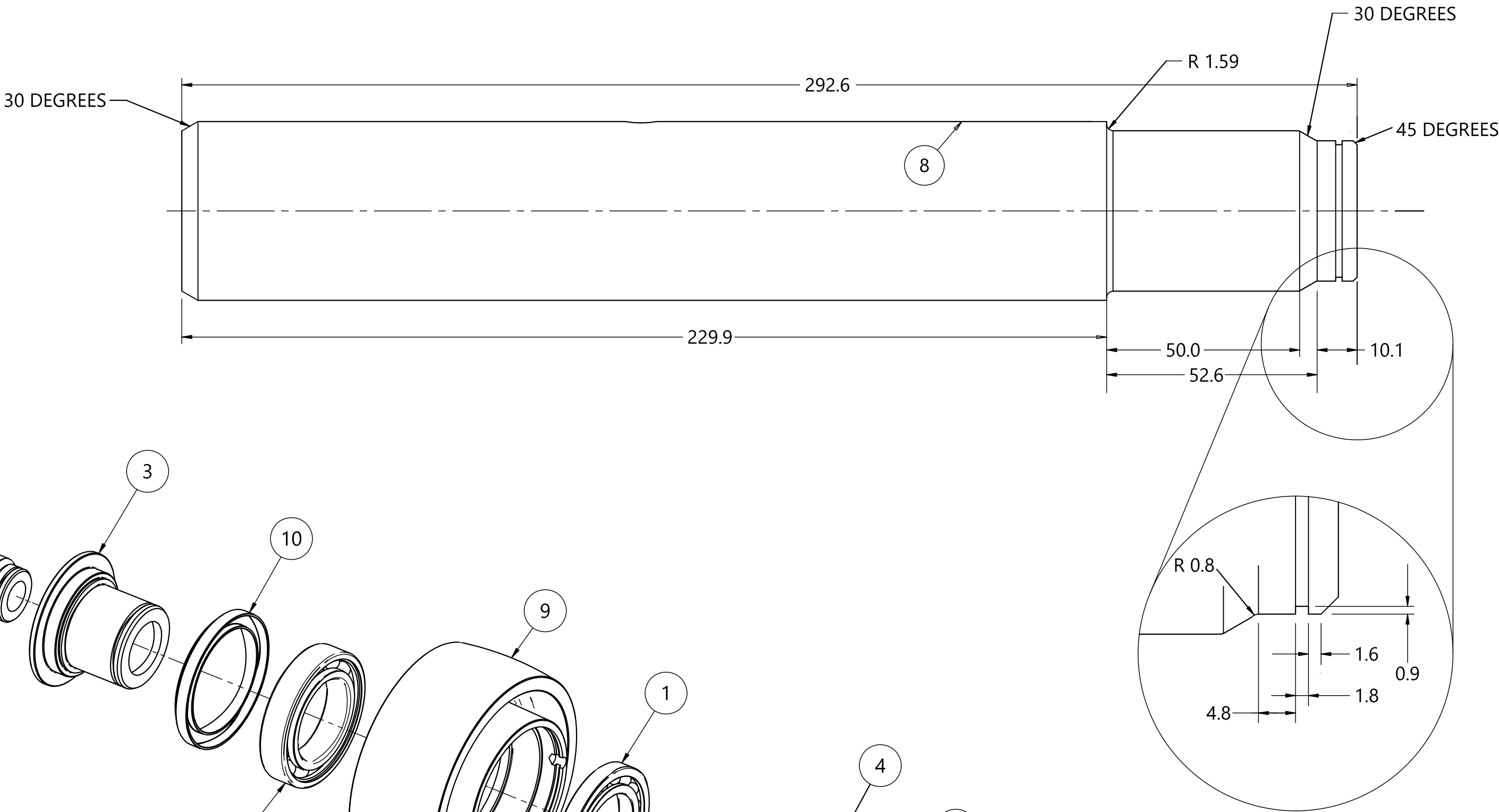
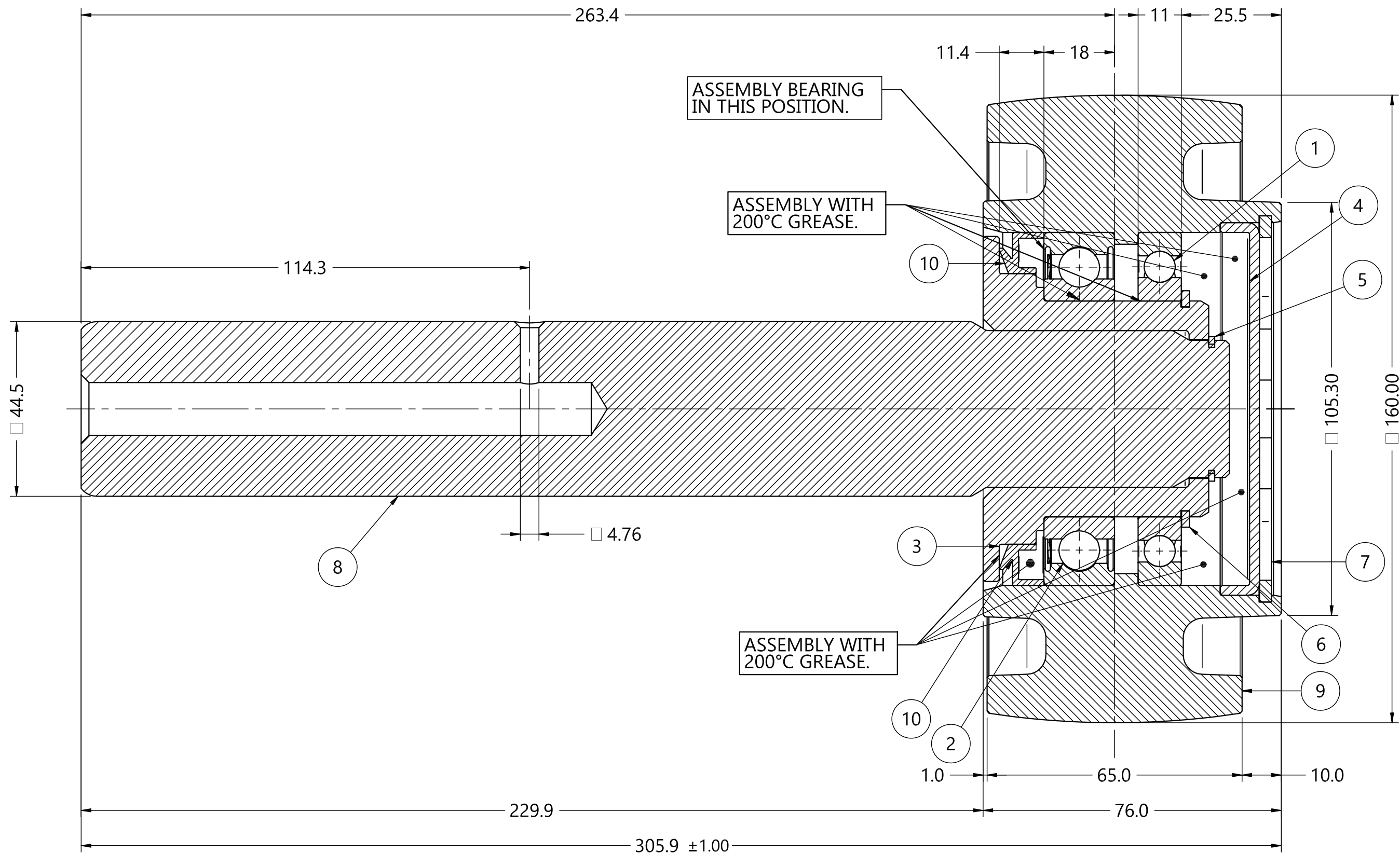
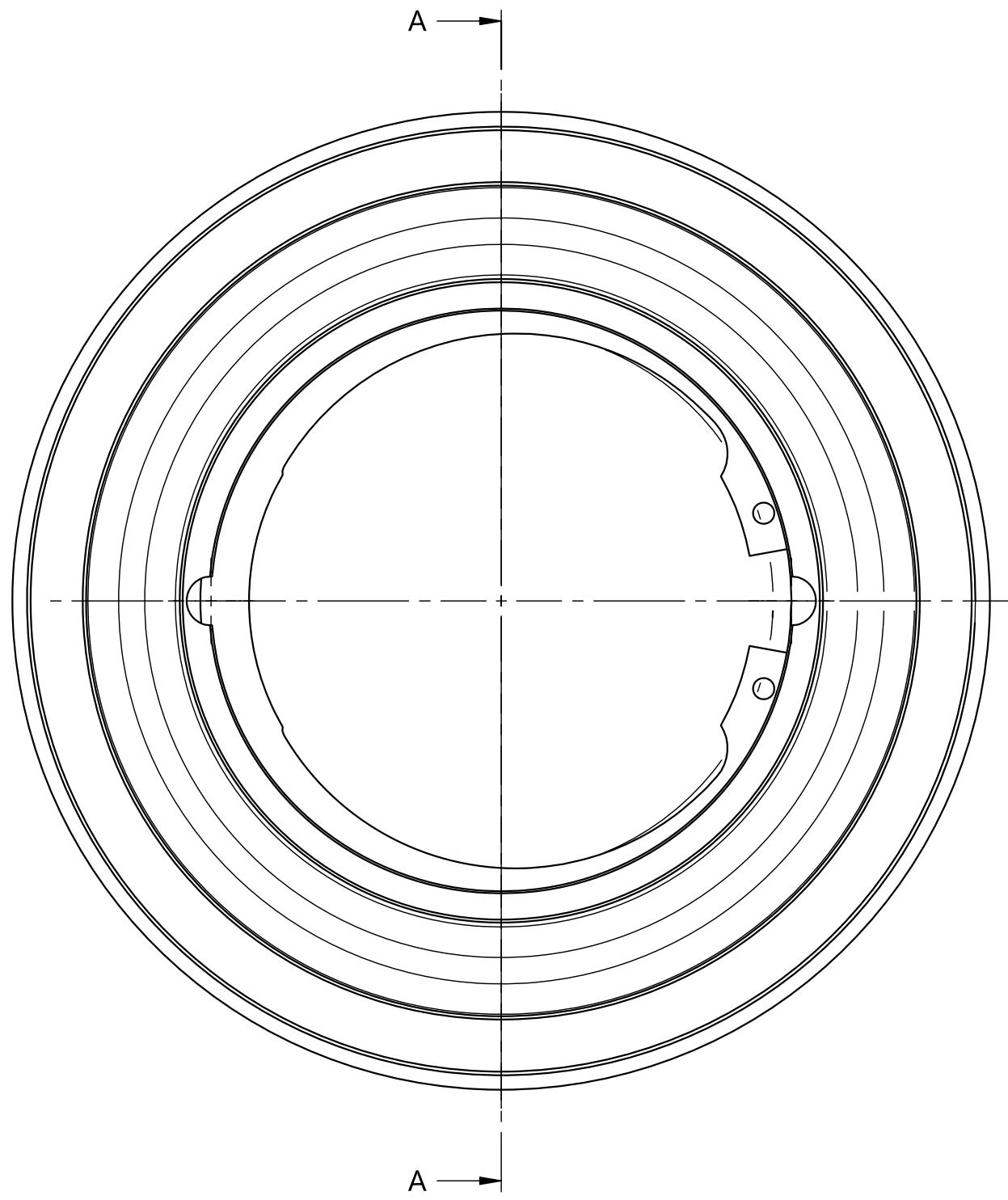
PART LIST			
ITEM	DESCRIPTION	QTY/U	WEIGHT/U
	ROLLER ASSEMBLY		10.647 kg
1	Bearing 16011-C3	1	0.264 kg
2	Bearing 6011-RS1	1	0.388 kg
3	Bushing	1	0.735 kg
4	Cap	1	0.177 kg
5	Circlip A-35	1	0.004 kg
6	Circlip A-55	1	0.012 kg
7	Circlip I-95	1	0.040 kg
8	Long Pin	1	3.243 kg
9	Roller	1	5.700 kg
10	Seal	1	0.085 kg

During assembly, insure pin is assembled with no less than an offset 2.4mm (3/32") from the chain surface.

2.4 MIN.

ROLLER ASSEMBLY  
Weight: 8.889 kg  
Scale: 1:1

Assemble Guide Roller to be as close to the chain as possible while still allowing the wheel to rotate freely.



B	DJO	SEP-13-2021	UPDATED GREASE SPEC. & REMOVED LUBRICATION POINT IN CAP	-	
A	DJO	AUG-25-2021	DRAWING COMPILED FROM APPROVAL DRAWINGS	-	
REV NO.	DRWN BY	DATE	DESCRIPTION	APPR BY	

CONTINUOUS SHIP UNLOADER  
GUIDE ROLLER REPLACEMENT

**JEA**  
Building Community

NORTHSIDE  
GENERATING  
STATION

JACKSONVILLE ELECTRIC  
AUTHORITY

CONTROL NUMBER: 309531

UNIT: N00  
PROJECT DEF: 080-194  
GEMS NO: N0#-##  
SCALE: NTS  
SHT. 3 OF 5

DWG. NO:  
1CSU6-07-0003