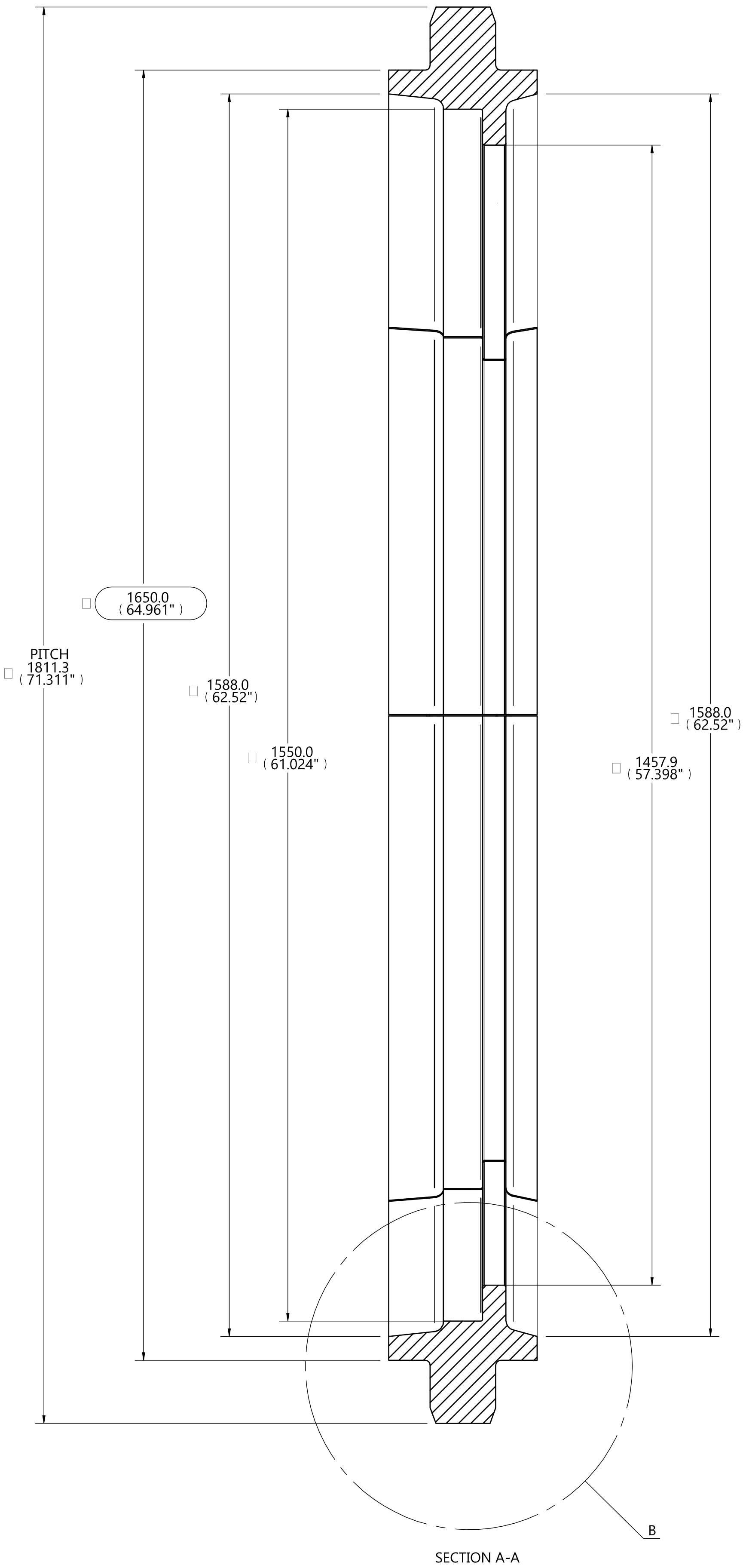
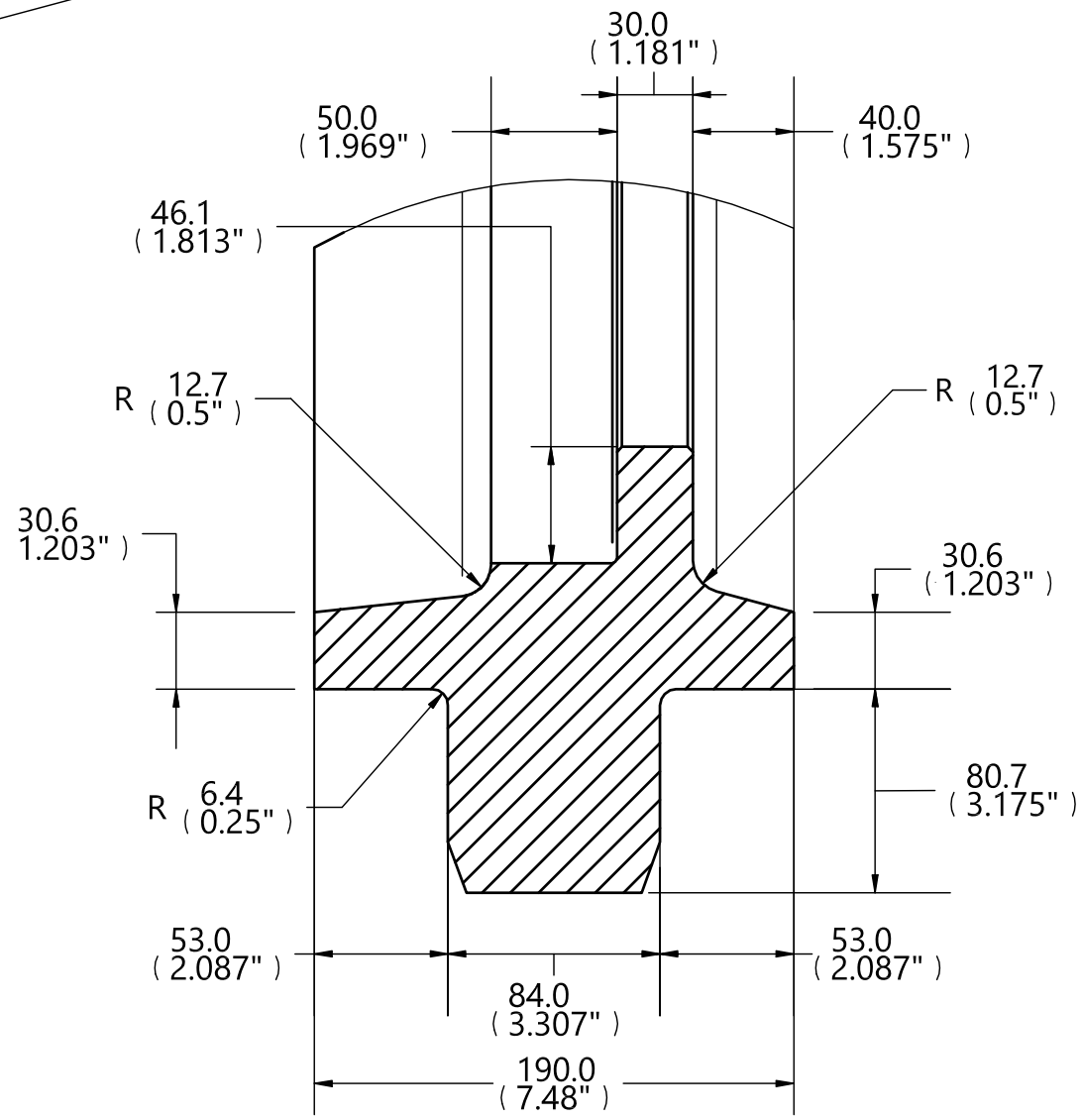


GENERAL DIMENSIONS	
MATERIAL	AISI 1050
Ø OUTSIDE	Ø1811.29mm
Ø PITCH	Ø1811.29mm
No.SEGMENTS	4 LONG - 4 SHORT
No. TEETH	28
Ø BUSHING	Ø73mm
CHAIN	FB-228-273011
CHAIN PITCH	202.8mm



- NOTES:
- USE M20-1.5 x 110mm DIN610, GRADE 10.9 BOLTS FOR ATTACHMENT WITH MATCHING WASHERS AND NUTS. TORQUE TO 595 NM (439 FT LBS).
 - MATCH MARK ALL SEGMENTS OF SPROCKET USING NUMBERS 1-8 FOR EACH JOINT AND LETTERS A & B FOR EACH SPROCKET.
 - FABRICATION METHODS SHALL FOLLOW THE BEST ACCEPTED PRACTICE WITHIN THE INDUSTRY AND IF NOT OTHER STANDARD IS APPLICABLE SHALL BE IN ACCORDANCE WITHIN THE AISC "SPECIFICATION FOR DESIGN, FABRICATION, AND ERECTION OF STRUCTURAL STEEL FOR BUILDING," LATEST EDITION.

REV NO.	DRWN BY	DATE	DESCRIPTION	APPR BY
A	DJO	SEP-14-2021	INCLUDED BOLTING DETAILS IN NOTES & REFORMATTED TO 1:4 SCALE	-
A	DJO	AUG-25-2021	DRAWING COMPILED FROM APPROVAL DRAWINGS	-

CONTINUOUS SHIP UNLOADER
SPROCKET

JEA
Building Community

NORTHSIDE
GENERATING
STATION

JACKSONVILLE ELECTRIC
AUTHORITY

CONTROL NUMBER: **309533**

UNIT: N00

PROJECT DEF: 060-194

GEMS NO: N0#-##

SCALE: 1" = 4"

SHT. 5 OF 5

DWG. NO:
DSE-186-20-1