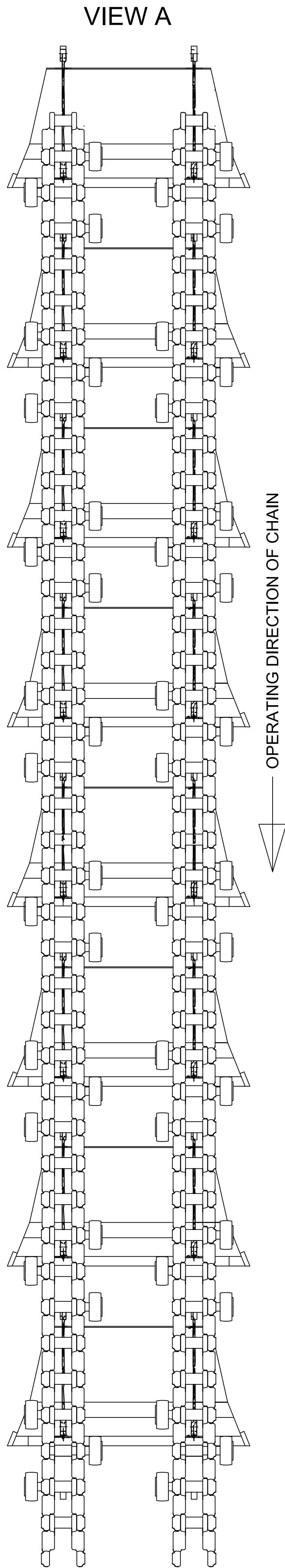
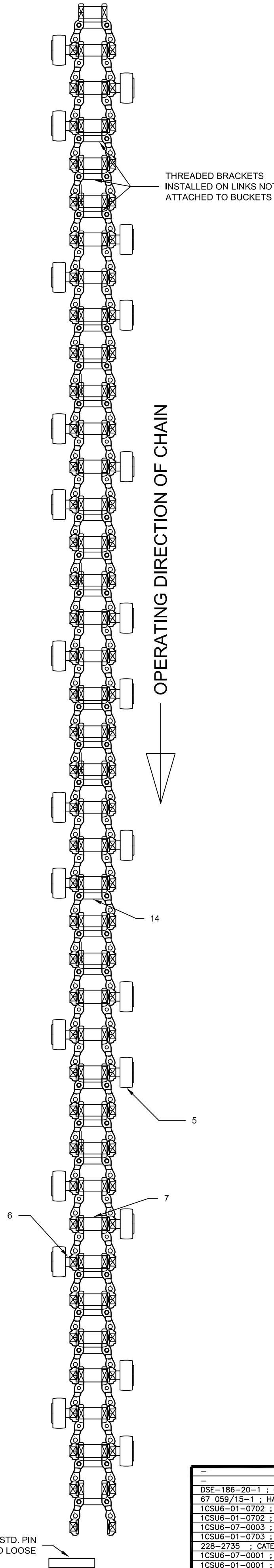


SECTION 1

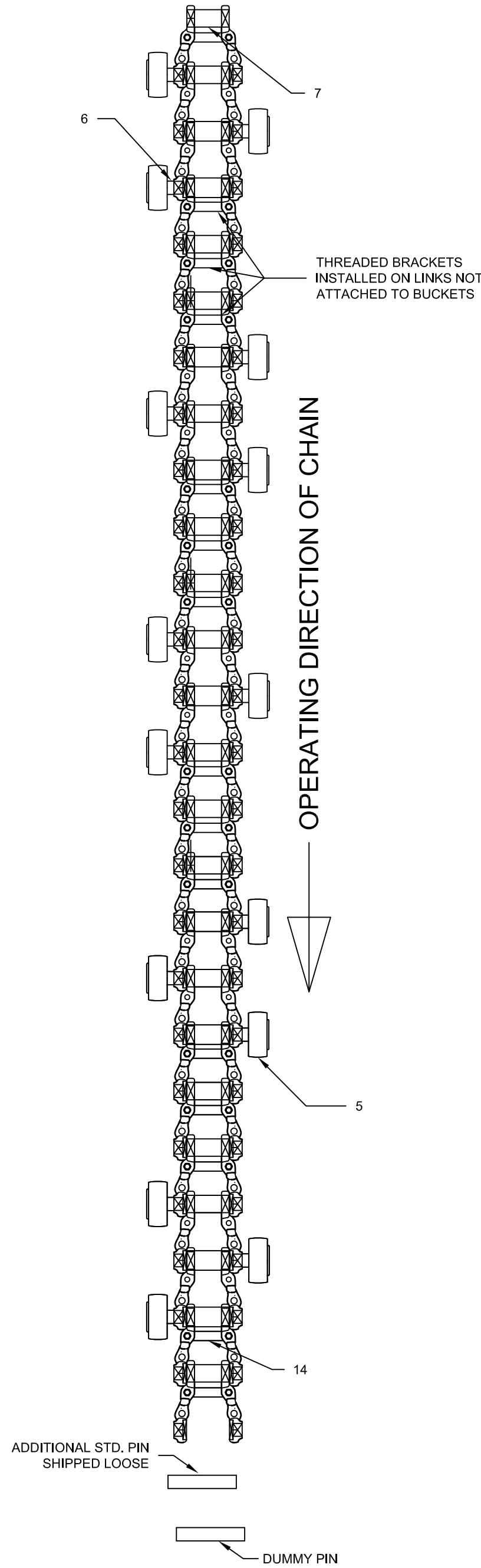


SECTION 1  
PART A  
QTY 10



ADDITIONAL STD. PIN  
SHIPPED LOOSE

SECTION 1  
PART B  
QTY 1

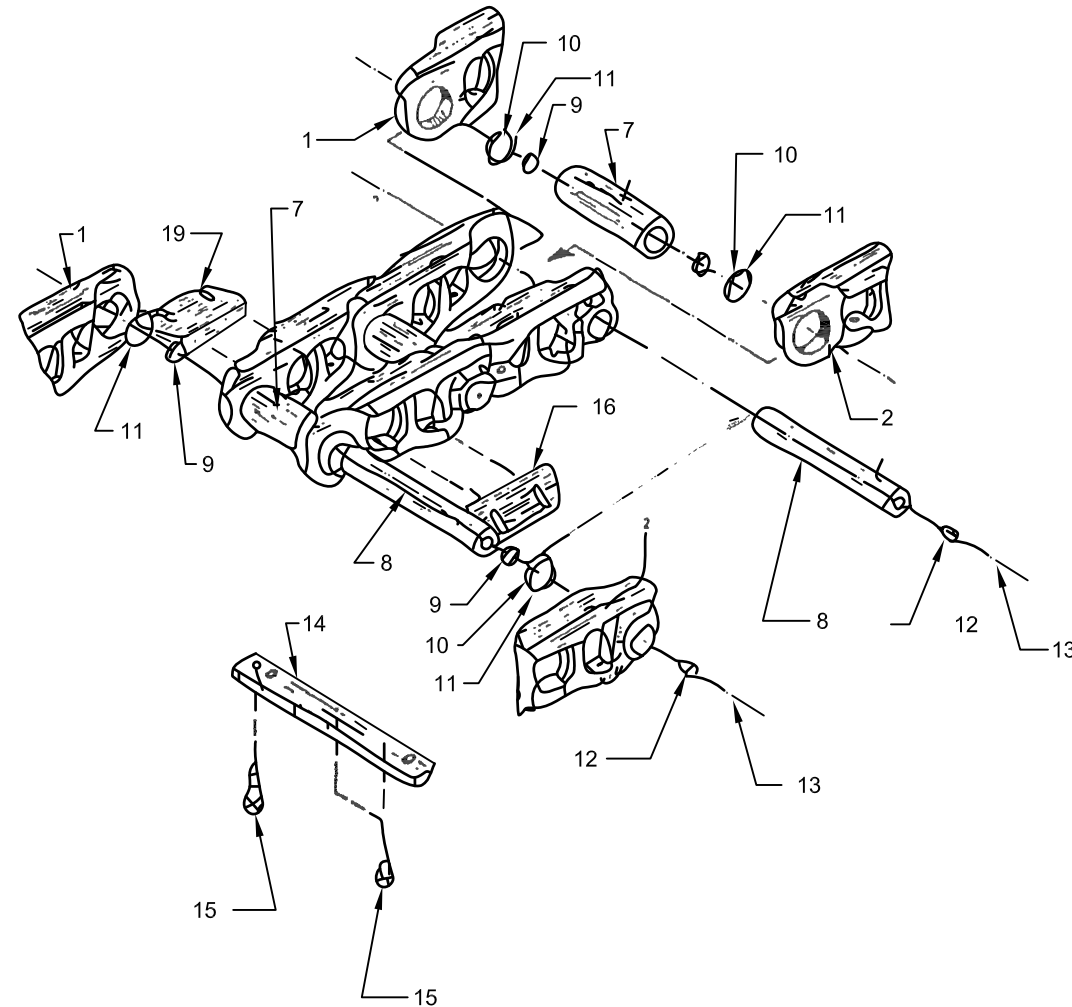


ADDITIONAL STD. PIN  
SHIPPED LOOSE

DUMMY PIN

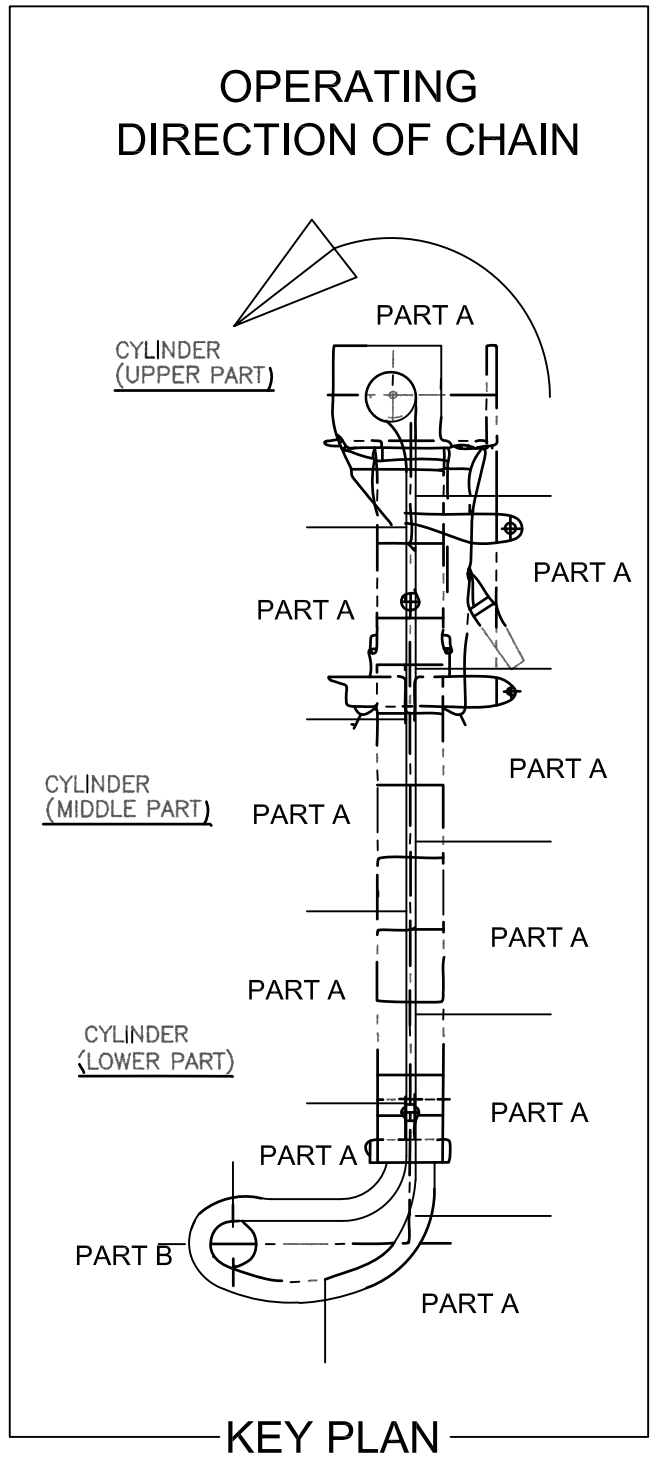
- NOTES:
1. DRAWING IS NOT TO SCALE AND IS PROVIDED FOR ASSEMBLY INFORMATION ONLY.
  2. CHAIN LINK HARDNESS SHALL BE BRINELL 27-30.
  3. CHAIN ASSEMBLY PATTERN WILL FOLLOW THE PATTERN OF TWO (2) STD PINS FOLLOWED BY THREE (3) LONG PINS. THE SIDE THE PINS EXTEND FROM WITH THE ROLLERS SHOULD FOLLOW THAT SHOWN IN PART A, PART B, AND PART C.
  4. ALL ITEMS LISTED IN THIS DRAWING BOM ARE PROVIDED IN QUANTITIES TO ASSEMBLE A SINGLE 425 LINK CHAIN WITHOUT ATTACHMENT HARDWARE OR BUCKETS.
  5. THE FOUR (4) ATTACHMENT POINTS ON THE BUCKET ARE DIMENSIONALLY CRITICAL FOR INSTALLATION. A BUCKET CAN BE LOANED TO THE SUCCESSFUL BIDDER TO INSURE DIMENSIONAL COMPLIANCE.
  6. PAINTING IS REQUIRED FOR THE CHAIN PER MANUFACTURER'S STANDARD.
  7. A TOTAL OF ELEVEN (11) SECTIONS OF CHAIN ARE TO BE SHIPPED. ELEVEN (11) ASSEMBLIES INCLUDING A LONG PIN, STANDARD ROLLER, AND GUIDE ROLLER SHALL BE SHIPPED LOOSE.
  8. TWO LOOSE FIT DUMMY PINS ARE REQUIRED FOR ATTACHING NEW LENGTHS OF CHAIN TO THE PREVIOUSLY INSTALLED SECTIONS. DUMMY PINS ARE TO BE MADE SO THAT THEY HAVE A LOOSE FIT WITH POSITIVE RETENTION ON BOTH SIDES.

STANDARD LINK ASSEMBLY, CAT 3P1113 OR EQUIVALENT  
(SEE DWG. 1CSU6-01-0703 FOR GUIDE ROLLER ASSEMBLY)



A SINGLE 425 LINK CHAIN WILL BE ASSEMBLED  
USING THE PART PATTERN:

A - A - A - A - A - A - A - A - A - A - B



BILL OF MATERIAL (SEE NOTE 4)		
ITEM	DESCRIPTION	ITEM
01	CHAIN LINK SIDE 1	425
02	CHAIN LINK SIDE 2	425
03	NA	NA
04	NA	NA
05	CHAIN GUIDE ROLLER ASSM.	255
06	LONG PIN	255
07	STANDARD ROLLER	425
08	STANDARD PIN	170
09	SMALL SPACER	340
10	LARGE SPACER	340
11	SEAL	340
12	LUBRICATION FITTING	425
13	LUBRICATION CAP	425
14	THREADED BRACKET	255
15	3/4"-10 x 1.625" BOLT	510
16	DUMMY PIN	1

REV NO.	DRWN BY	DATE	DESCRIPTION	APPR BY
1	DJO	AUG-23-2021	REVISED CHAIN SECTION COUNTS AND LENGTHS	
2	DJO	JAN-09-2021	RELEASED FOR INFORMATION.	
3	DJO	JAN-07-2021	REVISED CHAIN SECTION BREAK POINTS AND ADDED NOTES.	
4	DJO	DEC-16-2020	CHAIN 'BOM' AND 'PART' ARRANGEMENT FOR 'MAINTENANCE', 'REPAIR', 'MANUFACTURING, AND/OR ASSEMBLY'	
REFERENCE DRAWINGS				

CONTINUOUS SHIP UNLOADER CHAIN  
ARRANGEMENT

**JEA**  
Building Community

NORTHSIDE  
GENERATING  
STATION

JACKSONVILLE ELECTRIC  
AUTHORITY

UNIT: N00  
PROJECT DEF: 160-194  
GEMS NO: N0#-##  
SCALE: NTS  
SHT. 2 OF 5  
DWG. NO:  
1CSU6-07-0002

CONTROL NUMBER: 309530