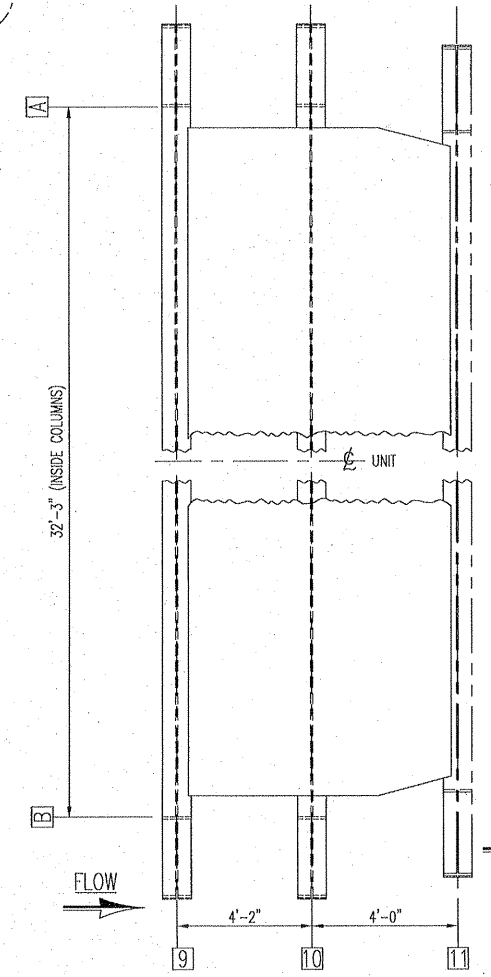
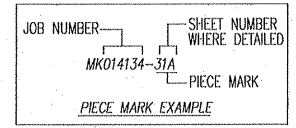


GENERAL NOTES

- EXTERNAL SURFACE TO BE SHOP COMMERCIAL BLASTED PER SSPC SP6 AND SHOP PAINTED WITH CARBOLINE CARBO ZINC 11 PRIMER (GREEN) 3 TO 5 MILS DFT.
- HOLD PRIMER BACK 4" FROM FIELD WELD AND COAT WITH CARBOLINE CARBOWELD 11 (1 MIL DFT).
- FABRICATION TO BE IN ACCORDANCE WITH A.I.S.C., A.W.S. D1-1 LATEST EDITION AND CMC STD # SW-001.
- ALL EXTERIOR WELDS TO BE SEAL WELDS. SKIP WELDING OF STIFFENERS IS NOT ALLOWED.
- CASING PLATE JOINTS SHALL BE WELDED TOGETHER WITH FULL PENETRATION WELDS UNLESS LOCATED BEHIND CASING STIFFENERS.
- ALL ITEMS SHIPPED LOOSE TO THE FIELD SHALL BE IDENTIFIED WITH: TAG NO., JOB NO., UNIT I.D. AND CUSTOMER P.O. NO..

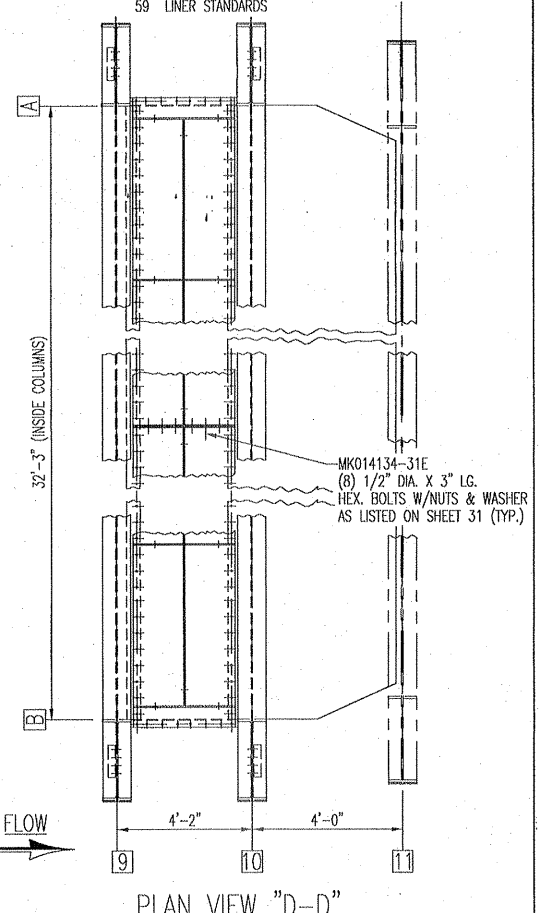
DRAWING INDEX

SHEET #	DESCRIPTION	WALL PANEL
30	CASING ASSEMBLY DIAGRAM	
31	CORNER ANGLE DIAGRAM	
32	WALL PANEL	
33	CASING LAYOUT	
34	COLUMN SECTIONS	
35	WALL INTERNALS	
36	WALL LINERS	
37	WALL PANEL	
38	CASING LAYOUT	
39	COLUMN SECTIONS	
40	WALL INTERNALS	
41	WALL LINERS	
42	FLOOR PANEL	
43	CASING LAYOUTS	
44	FLOOR INTERNALS	
45	FLOOR LINERS	
46	ROOF PANELS	
47	ROOF CASING LAYOUT	
48	ROOF INTERNALS	
49	ROOF LINERS	
50	CATALYST LOADING DOOR PANEL	
51	CATALYST LOADING DOOR CASING LAYOUT	
52	CATALYST LOADING DOOR INTERNALS	
53	CATALYST LOADING DOOR LINERS	
54	WALL LINERS LAYOUTS	
55	WALL LINERS LAYOUTS	
56	FLOOR LINER LAYOUTS	
57	ROOF LINER LAYOUTS	
58	CATALYST DOOR LINERS LAYOUTS	
59	LINER STANDARDS	



PLAN SECTION "A-A"

TOTAL WEIGHT	
WALL PANEL COL. B ASS'Y MK: 014134-32A	X
WALL PANEL COL. A ASS'Y MK: 014134-37A	X
FLOOR PANEL ASS'Y MK: 014134-42A	X
ROOF PANEL ASS'Y MK: 014134-46A	X
ROOF PANEL ASS'Y MK: 014134-46B	X
CATALYST LOADING DOOR ASS'Y MK: 014134-50A	X
CATALYST LOADING DOOR ASS'Y MK: 014134-50B	X



NOOTER/ERIKSEN INC. VENDOR SUBMITTAL REVIEW

REVIEW OF VENDOR DRAWINGS DOES NOT RELIEVE THE VENDOR OF RESPONSIBILITIES FOR ACCURACY OF DIMENSIONS AND COMPLIANCE TO CODES, NOOTER/ERIKSEN SPECIFICATIONS AND P.O. REQUIREMENTS

☒ A REVIEWED AND ACCEPTED

☐ B REVIEWED WITH COMMENTS (WORK MAY PROCEED)

☐ C REVISE AND RESUBMIT (WORK MAY NOT PROCEED)

☐ D REVIEWED FOR INFORMATION ONLY

RELEASE DATE: _____ REVIEWERS INITIALS: _____

PROJECT: JEA BRANDY JOB NO CODE SHT REV FE

DRAWING NO. 014134-DU-030 A X

Chanute Manufacturing Co. A Unit Of Optimus Corp.

SCR ASSEMBLY DIAGRAM

REF. CUST. DWG. : _____

DRAWN BY: S.THB. 07/05/02

CHECKED BY: F.L. 07/10/02

APPROVED BY: _____

DO NOT SCALE THIS DWG.

02036 - AB 75

REV.	1	2	3	4	5	6	7	8
CHANGE ORDER								

- ☒ NO EXCEPTIONS NOTED Release for manufacture
- ☐ EXCEPTIONS NOTED Release for manufacture Revise and resubmit for distribution
- ☐ RETURNED FOR CORRECTION Do not proceed Revise and resubmit for authorization

Review does not relieve contractor from responsibility for errors or deviations from contract requirements

UTILITY ENGINEERING

SHOW LIFT LUG WITH NOTE FOR REMOVAL IN FIELD

FURNISH WEIGHTS

M010322-201A122 RA
JEA BRANDY BRANCH
9/3/2002