

- NOTES:
1. GAS FLOW ARROWS, WEIGHT, CORMETECH IDENTIFICATION/PROJ NO. PAINTED AS SHOWN ON BOTH SIDES.
 2. "MADE IN THE ... " AND MODULE ID NUMBER PAINTED ON DOWNSTREAM SIDE OF MODULE.
 3. MODULES SHALL BE NUMBERED AS SHOWN IN GENERAL ARRANGEMENT.
 4. SAMPLE ELEMENTS ARE REMOVABLE FROM UPSTREAM SIDE OF MODULE.
 5. HIGH TEMPERATURE, RESILIENT GASKET IS ATTACHED TO EACH MODULE BY CORMETECH. THE FIBERGLASS-BASE GASKET IS 2" WIDE BY APPROXIMATELY 1/2" THICK.

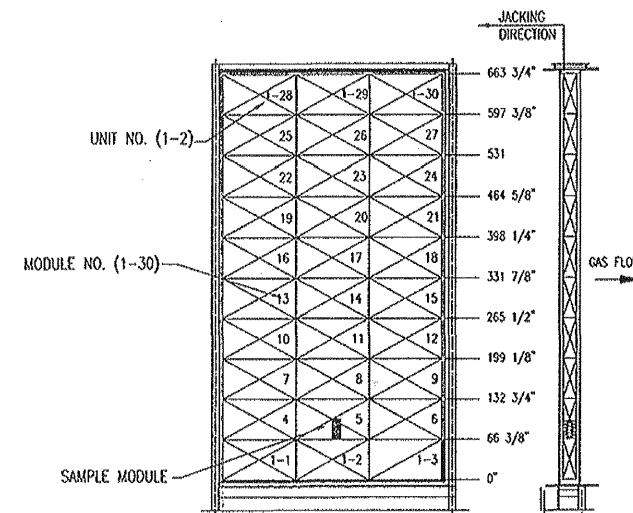
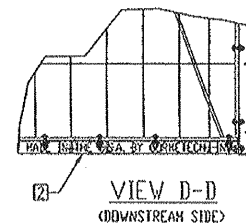
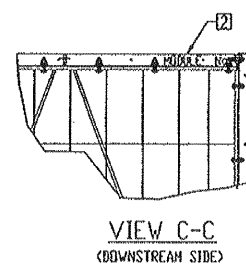
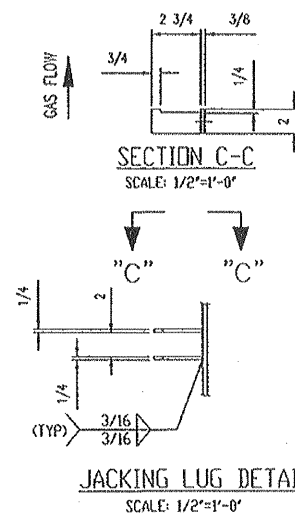
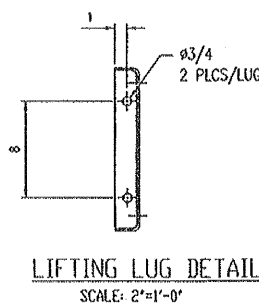
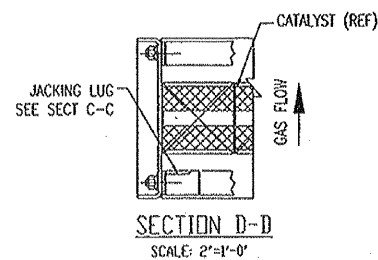
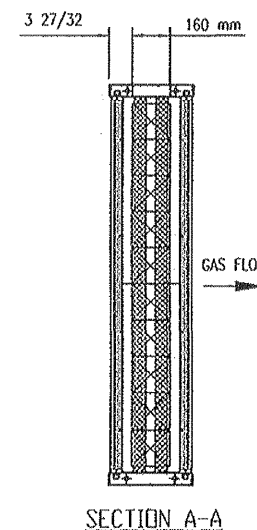
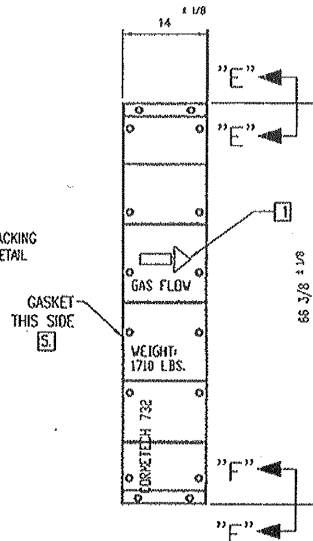
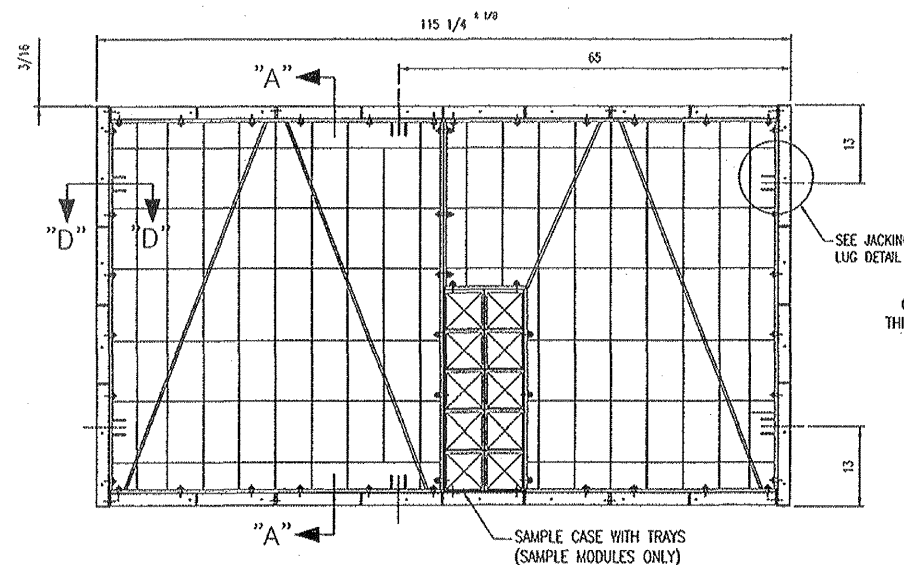
DESIGN CONDITIONS		
1.- WEIGHT (AS SHIPPED)	1550 LBS / REGULAR MODULE 1710 LBS / SAMPLE MODULE	
2.- MODULE QUANTITIES	29 REGULAR MODULES x 2 UNITS = 58 1 SAMPLE MODULES x 2 UNITS = 2	
3.- ELEMENT ARRGT IN MODULE	W x H x D 18 x 10 x 160 mm	

Review does not relieve contractor from responsibility for errors or deviations from contract requirements

UTILITY ENGINEERING

WZM

- ☒ NO EXCEPTIONS NOTED
Release for manufacture
- ☐ EXCEPTIONS NOTED
Release for manufacture
Revise and resubmit for distribution
- ☐ RETURNED FOR CORRECTION
Do not proceed
Revise and resubmit for authorization



GENERAL ARRANGEMENT
SCALE: NTS [3]

M010322-201A008 RB
JEA BRANDY BRANCH

11/6/2002

NOTER/ERIKSEN INC. VENDOR SUBMITTAL REVIEW				
REVIEW OF VENDOR DRAWINGS DOES NOT RELIEVE THE VENDOR OF RESPONSIBILITIES FOR ACCURACY OF DIMENSIONS AND COMPLIANCE TO CODES, NOTER/ERIKSEN SPECIFICATIONS AND P.O. PROCEDURES.				
<input checked="" type="checkbox"/> A	REVIEWED AND ACCEPTED			
<input type="checkbox"/> B	REVIEWED WITH COMMENTS (WORK MAY PROCEED)			
<input type="checkbox"/> C	REVISE AND RESUBMIT (WORK MAY NOT PROCEED)			
<input type="checkbox"/> D	REVIEWED FOR INFORMATION ONLY			
RELEASE DATE: 11-1-02		REVIEWER'S INITIALS: JKD		
PROJECT:	JEA BRANDY	JOB NO	CODE	SHI
DRAWING NO.	014139-SC-100	REV	FE	
		B	X	

PROJECT: NE / BRANDY BRANCH		C		CHANGED JACKING LUG DIM BACK TO 13"	10/28/02	DB
PROPRIETARY		B		REVISED MODULE DESIGN, WEIGHT	10/7/02	DB
CORMETECH INCORPORATED PROPRIETARY		A		SUBMIT FOR CUSTOMER REVIEW	3/25/02	DB
ANY DISSEMINATION OF INFORMATION CONTAINED IN THIS PRINT IS PROHIBITED. ALL PRINTS ARE TO BE RETURNED TO CORMETECH INCORPORATED UPON COMPLETION OF WORK.		REVISION		DESCRIPTION	DATE	INITIALS
TOLERANCES ARE AS FOLLOWS: UNLESS OTHERWISE NOTED, DECIMAL DIMENSIONS ±.1/8, FRACTIONAL DIMENSIONS ±.1/16		DESIGN		CORMETECH	5/16/02	
ALL DIMENSIONS ARE IN INCHES UNLESS OTHERWISE SPECIFIED		DRAWN BY		O. BOVAR		
		CHECKED BY		E. MANCINI		
		DATE		5/16/02		
		SCALE		1"=1'-0"		
		DRAWING NUMBER		0073211		
		SIZE		D		