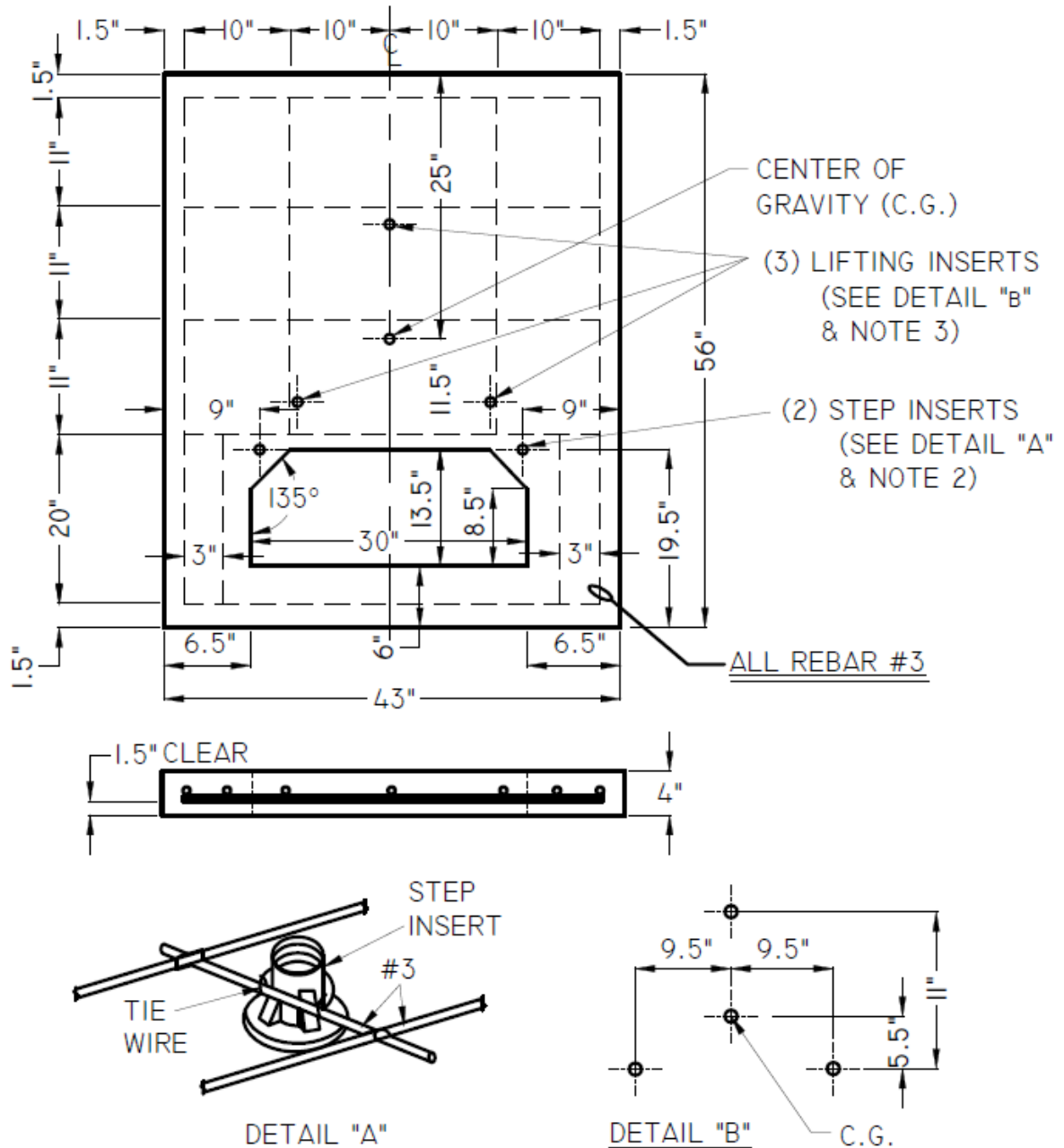


**DRAWING DETAILS****CONCRETE PADS**

<b>JEA ITEM ID</b>	<b>DESCRIPTION</b>
PADCO001	PAD, TRANSFORMER, CONCRETE, 56"L X 43"W X 4"H, SPLAY OPENING-30" X 13", FOR PAD- MOUNT DISTRIBUTION EQUIPMENT, JEA PLATE NO. DMD-56, (WEIGHT 746 LBS. EACH)
PADCO003	PAD, TRANSF. OPEN DELTA, CONCRETE, 86"L X 54"W X 6"H, SPLAY OPENING-26" X 11", (WEIGHT 2300 LBS. EACH) JEA PLATE NO. DMD-73
PADCO006	PAD, CONCRETE, PRECAST, 72" X 72" X 10", SPLAY OPENING 48"X16" TOP & BOTTOM, 3 PHASE TRANSFORMER, COMPACT SIZE, (WEIGHT 3821 LBS. EACH) ORDER AD REQUESTED, DMD-87
PADCO007	PAD, CONCRETE 3 PHASE, 72" X 96" X 10", SPLAY OPENING 54"X16" BOTTOM & MAX OF 56"X18" TOP (WEIGHT 5315 LBS. EACH)
PADCO008	PAD, CONCRETE, 3 PHASE, 96" X 96" X 10", SPLAY OPENING 54"X16" BOTTOM & MAX. 56"X18" TOP (WEIGHT 7307 LBS. EACH)

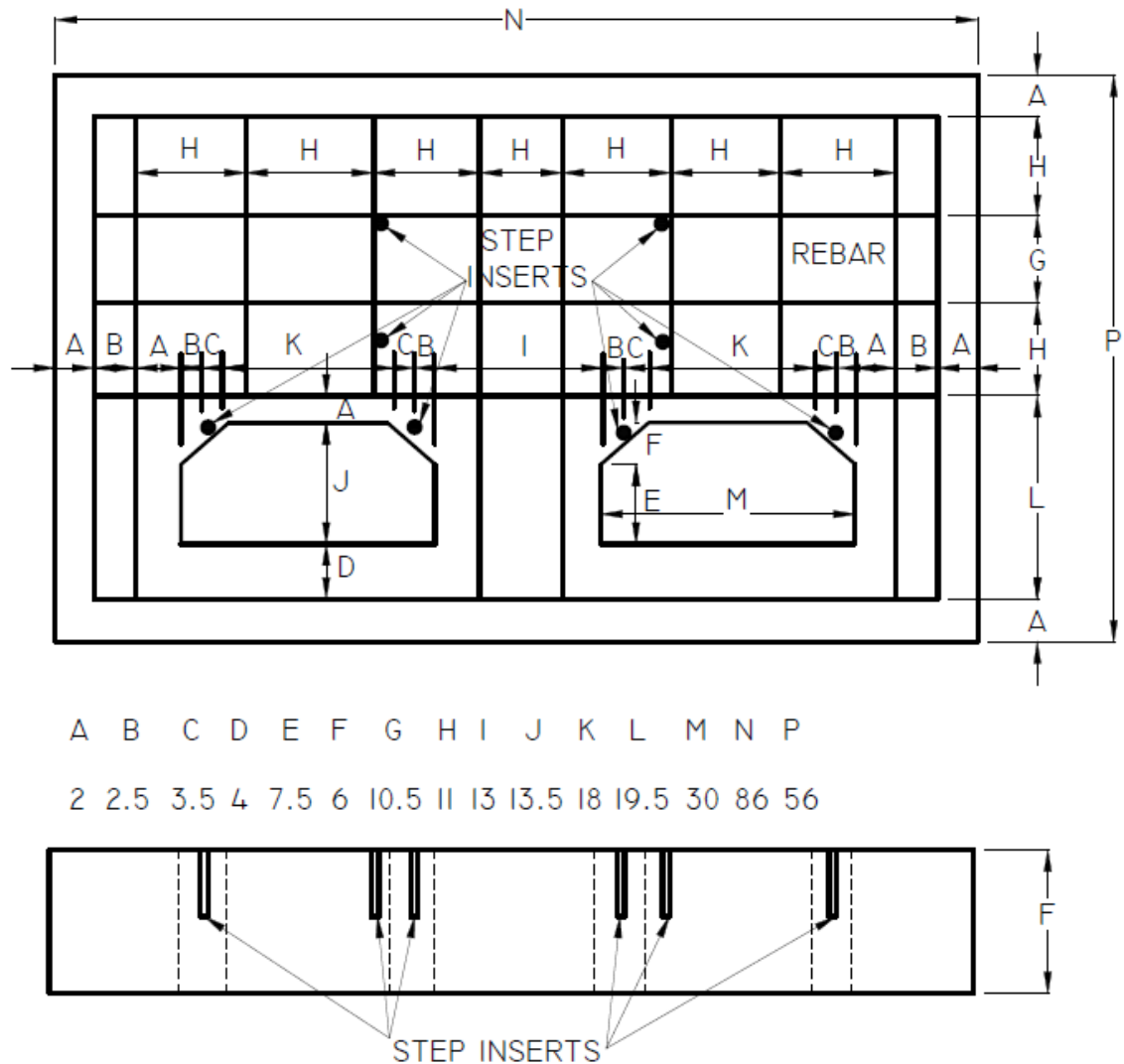
1. **PADCO 001** - PAD, TRANSFORMER, CONCRETE, 56"L X 43"W X 4"H, SPLAY OPENING-30" X 13", FOR PAD- MOUNT DISTRIBUTION EQUIPMENT, JEA PLATE NO. DMD-56, (WEIGHT 746 LBS. EACH)



NOTE:

1. CONCRETE:  $f_c = 3000\text{PSI}$ . STEEL: ASTM A615, GRADE 60
2. STEP INSERT, STAR PRODUCTS CATALOG NUMBER P-45T OR APPROVED EQUAL.
3. LIFTING INSERT, DAYTON SUPERIOR - F44.
4. REBARS MAY BE SHIFTED SLIGHTLY TO ACCOMMODATE LIFTING INSERTS.

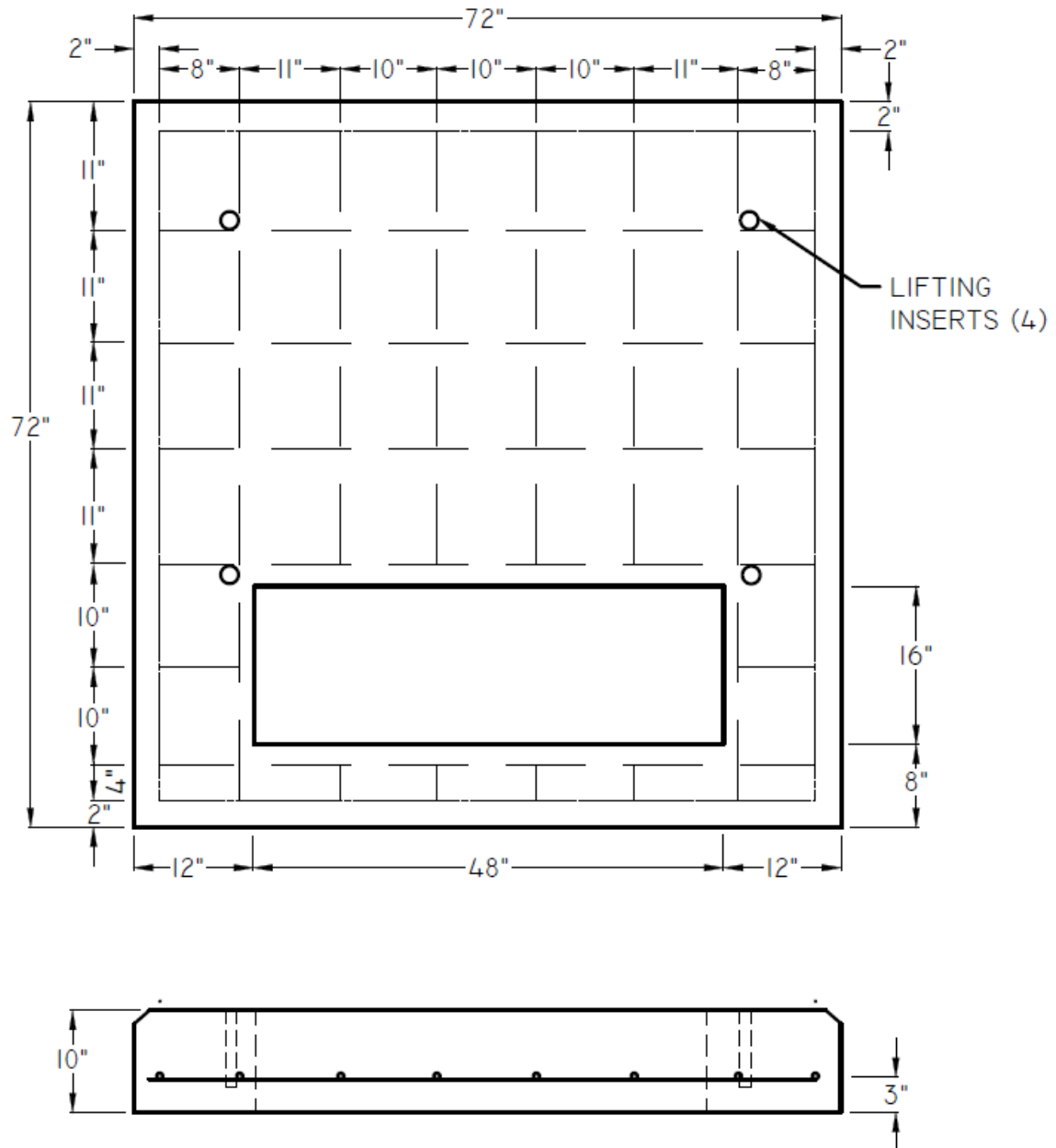
2. **PADCO 003** - PAD, TRANSF. OPEN DELTA, CONCRETE, 86"L X 54"W X 6"H, SPLAY OPENING-26" X 11", (WEIGHT 2300 LBS. EACH)  
JEA PLATE NO. DMD-73



NOTES:

1. CONCRETE TO BE CLASS "A" (3,000 P.S.I.) TYPE, OR APPROVED EQUAL.
2. STEP INSERT, STAR PRODUCTS CATALOG NUMBER P-45T OR APPROVED EQUAL.
3. USE #5 REINFORCING ROD.
4. TIE REINFORCING RODS AT ALL JOINTS.

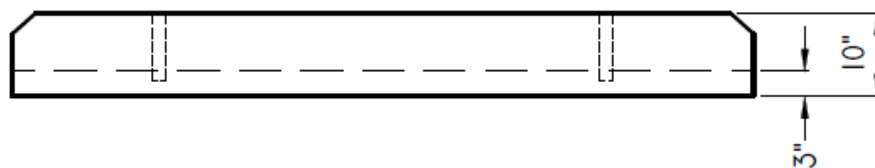
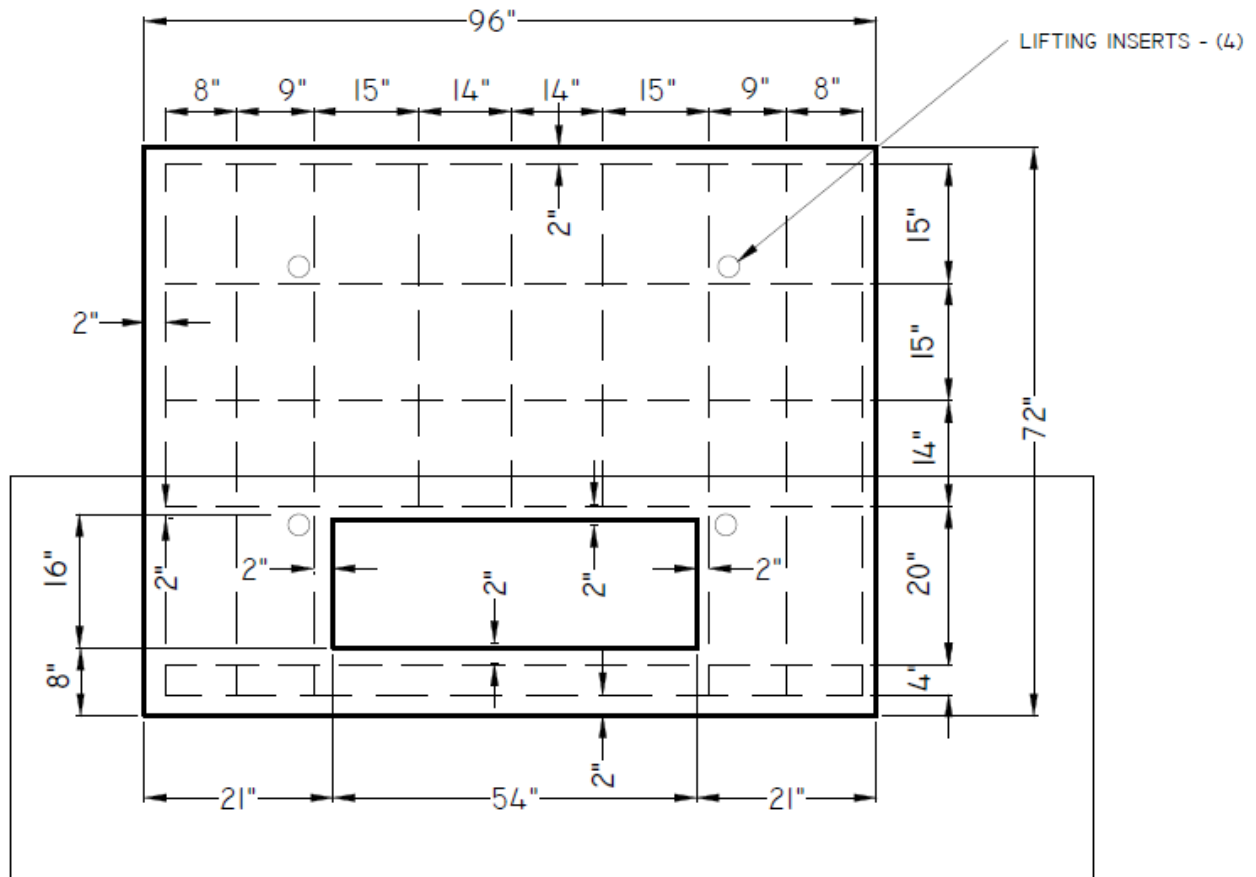
3. **PADCO 006** - PAD, CONCRETE, PRECAST, 72" X 72" X 10", SPLAY OPENING 48"X16" TOP & BOTTOM, 3 PHASE TRANSFORMER, COMPACT SIZE, (WEIGHT 3821 LBS. EACH) ORDER AD REQUESTED, DMD-87



NOTES:

1. CONCRETE: STRENGTH - 3000 PSI MINIMUM
2. REINFORCING STEEL: NO. 5 GRADE 60
3. LIFTING INSERTS: DAYTON SUPERIOR NO. F-53 OR APPROVED EQUAL

4. **PADCO 007** - PAD, CONCRETE 3 PHASE, 72" X 96" X 10", SPLAY OPENING 54"X16" BOTTOM & MAX OF 56"X18" TOP (WEIGHT 5315 LBS. EACH)



NOTES:

1. CONCRETE STRENGTH - 3,000 P.S.I. MINIMUM
2. REINFORCING STEEL - NO. 5, GRADE 60
3. LIFTING INSERT - DAYTON SUPERIOR NO. F-53 OR APPROVED EQUAL

5. **PADCO 008** - PAD, CONCRETE, 3 PHASE, 96" X 96" X 10", SPLAY OPENING 54"X16" BOTTOM & MAX. 56"X18" TOP (WEIGHT 7307 LBS. EACH)

