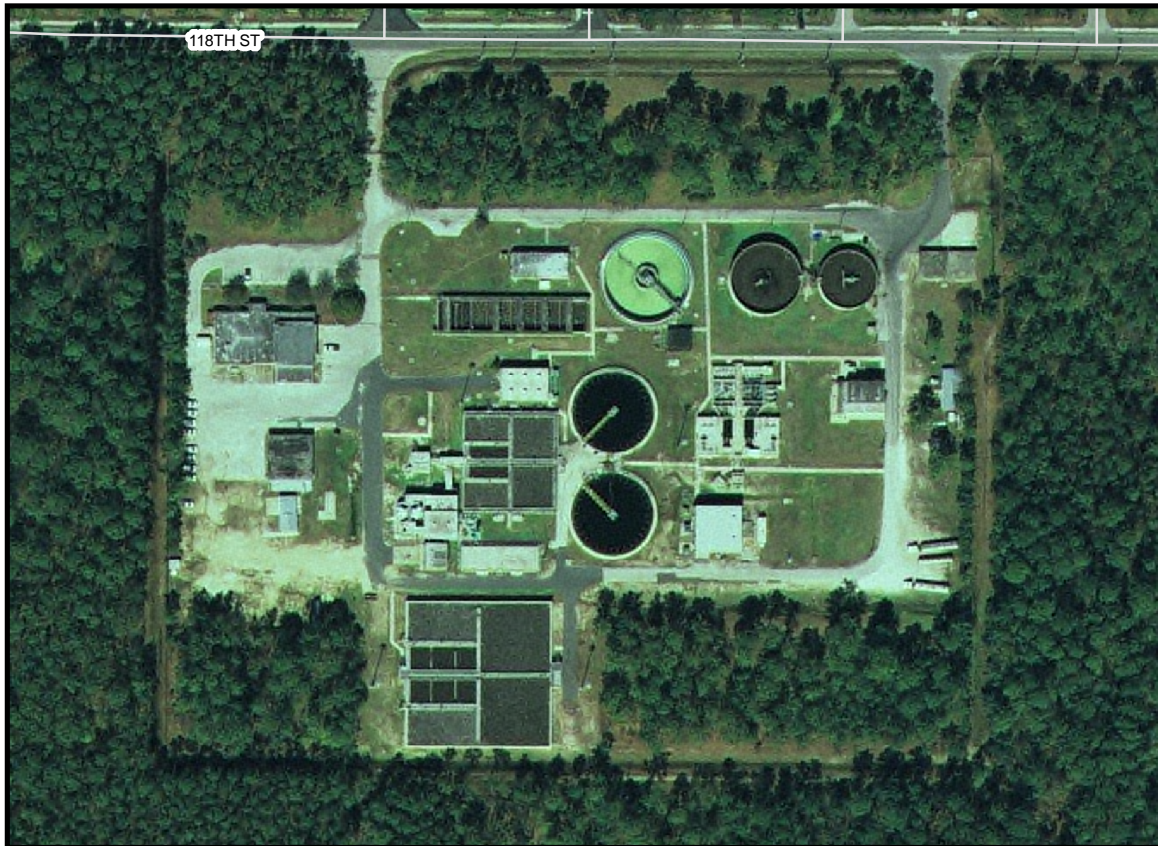




## SOUTHWEST WWTP



SOUTHWEST WWTP  
5420 118TH Street  
Jacksonville, FL 32250



Duval County

**DISCLAIMER OF DOCUMENT INFORMATION AND ACCURACY:**  
This document and the information contained herein has been created exclusively for use by JEA. JEA does not guarantee the accuracy of this document. JEA does not guarantee that this document is free from errors and/or omissions. It is the sole responsibility of any user to determine the accuracy and suitability of this document for any particular use.

0 90 180 360 540 720 Feet



**Start:** 21 W Church St  
Jacksonville, FL 32202-3155, US

**End:** 5420 118th St  
Jacksonville, FL 32244-3002, US

**Notes:**

Spend 10 minutes,  
**you could save hundreds  
on car insurance.**

[GET YOUR QUOTE](#)

PROGRESSIVE.COM  
1-800-PROGRESSIVE

**PROGRESSIVE**  
DIRECT

## Directions

## Distance

**Total Est. Time:** 21 minutes

**Total Est. Distance:** 11.77 miles

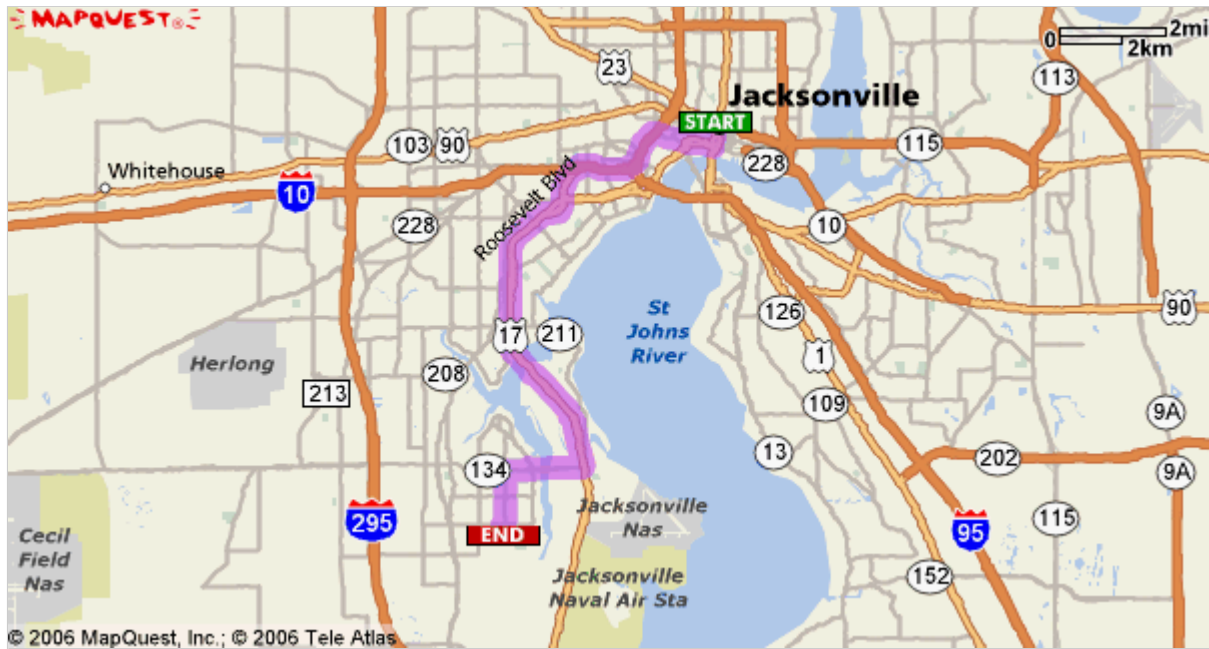
- |  |   |            |
|--|---|------------|
|  | <b>1:</b> Start out going EAST on W CHURCH ST toward N MAIN ST / US-17 S / US-1 S / US-90 E / FL-10 E / FL-5 S.   | <0.1 miles |
|  | <b>2:</b> Turn RIGHT onto N MAIN ST / US-17 S / US-1 S / US-90 E / FL-10 E / FL-5 S. Continue to follow N MAIN ST / US-17 S / US-1 S / US-90 E / FL-10 E. | 0.2 miles  |
|  | <b>3:</b> Turn RIGHT onto W BAY ST / US-17 S / FL-228 W. Continue to follow W BAY ST.   | 0.9 miles  |
|  | <b>4:</b> Merge onto I-95 S toward I-10 W.  | 0.9 miles  |
|  | <b>5:</b> Merge onto I-10 W via EXIT 351B toward LAKE CITY / TALLAHASSEE.   | 0.9 miles  |
|  | <b>6:</b> Take EXIT 361 on the LEFT toward US-17 S / ROOSEVELT BLVD..   | 0.2 miles  |
|  | <b>7:</b> Merge onto ROOSEVELT EXPY.  | 1.3 miles  |
|  | <b>8:</b> Stay STRAIGHT to go onto ROOSEVELT BLVD / US-17 S / FL-15 S.  | 4.6 miles  |
|  | <b>9:</b> Turn RIGHT onto TIMUQUANA RD / FL-134 W.  | 1.4 miles  |
|  | <b>10:</b> Turn LEFT onto CATOMA ST.  | 0.9 miles  |
|  | <b>11:</b> Turn RIGHT onto 118TH ST.  | <0.1 miles |
|  | <b>12:</b> End at <b>5420 118th St</b><br>Jacksonville, FL 32244-3002, US   |            |

**Total Est. Time:** 21 minutes

**Total Est. Distance:** 11.77 miles



Map out great hotel rates on Orbitz



**Start:**  
**21 W Church St**  
Jacksonville, FL 32202-3155, US

**End:**  
**5420 118th St**  
Jacksonville, FL 32244-3002, US



All rights reserved. Use Subject to License/Copyright

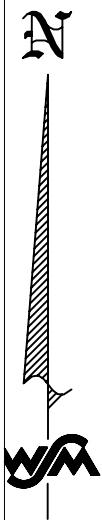
These directions are informational only. No representation is made or warranty given as to their content, road conditions or route usability or expeditiousness. User assumes all risk of use. MapQuest and its suppliers assume no responsibility for any loss or delay resulting from such use.



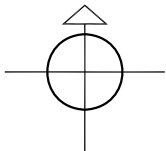


MATCH LINE "C"

MATCH LINE "1"



N



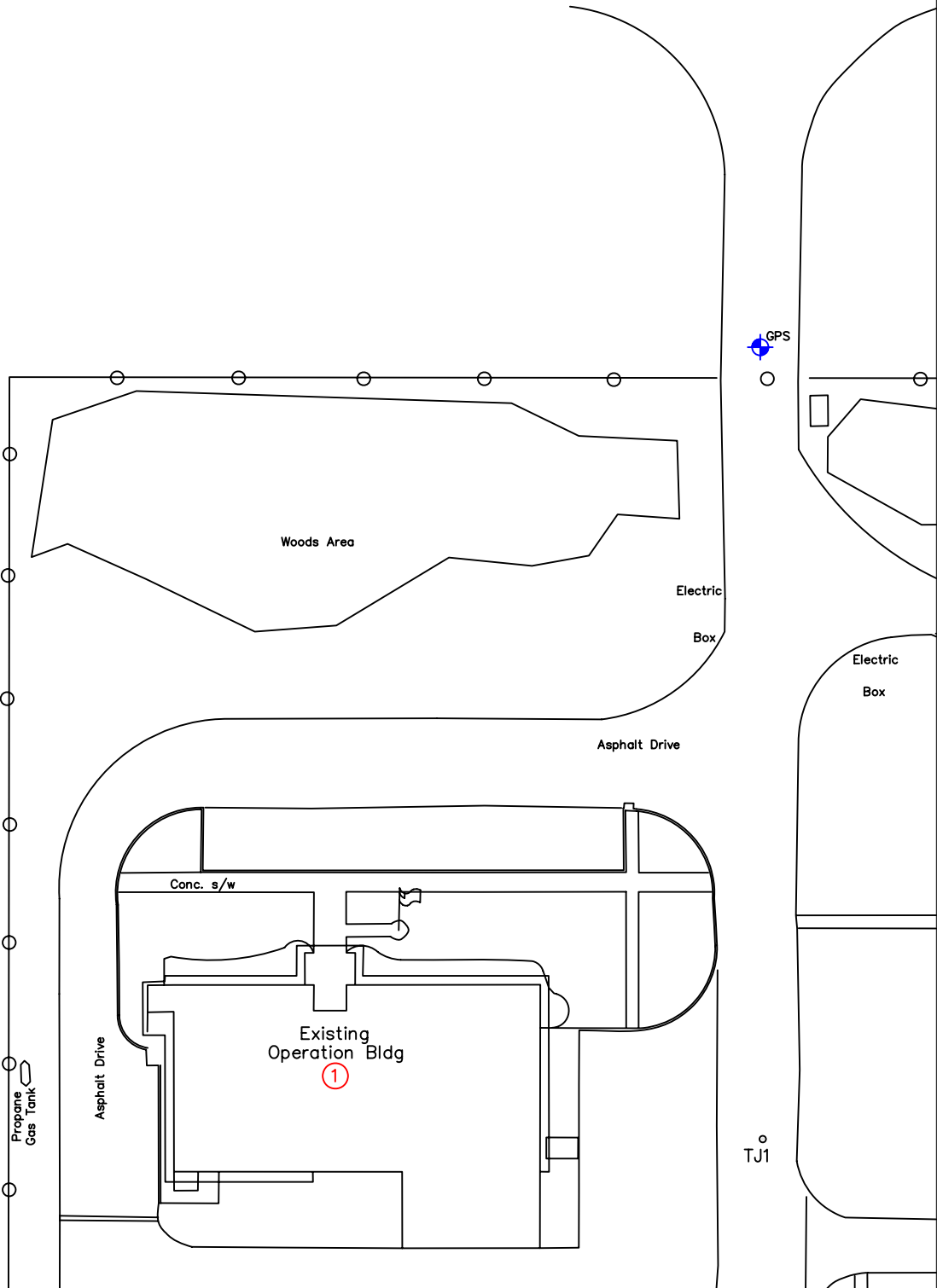
0 12.5 25 50  
SCALE: 1"=50'

MATCH LINE "B" to pg 2



SOUTHWEST WWTP

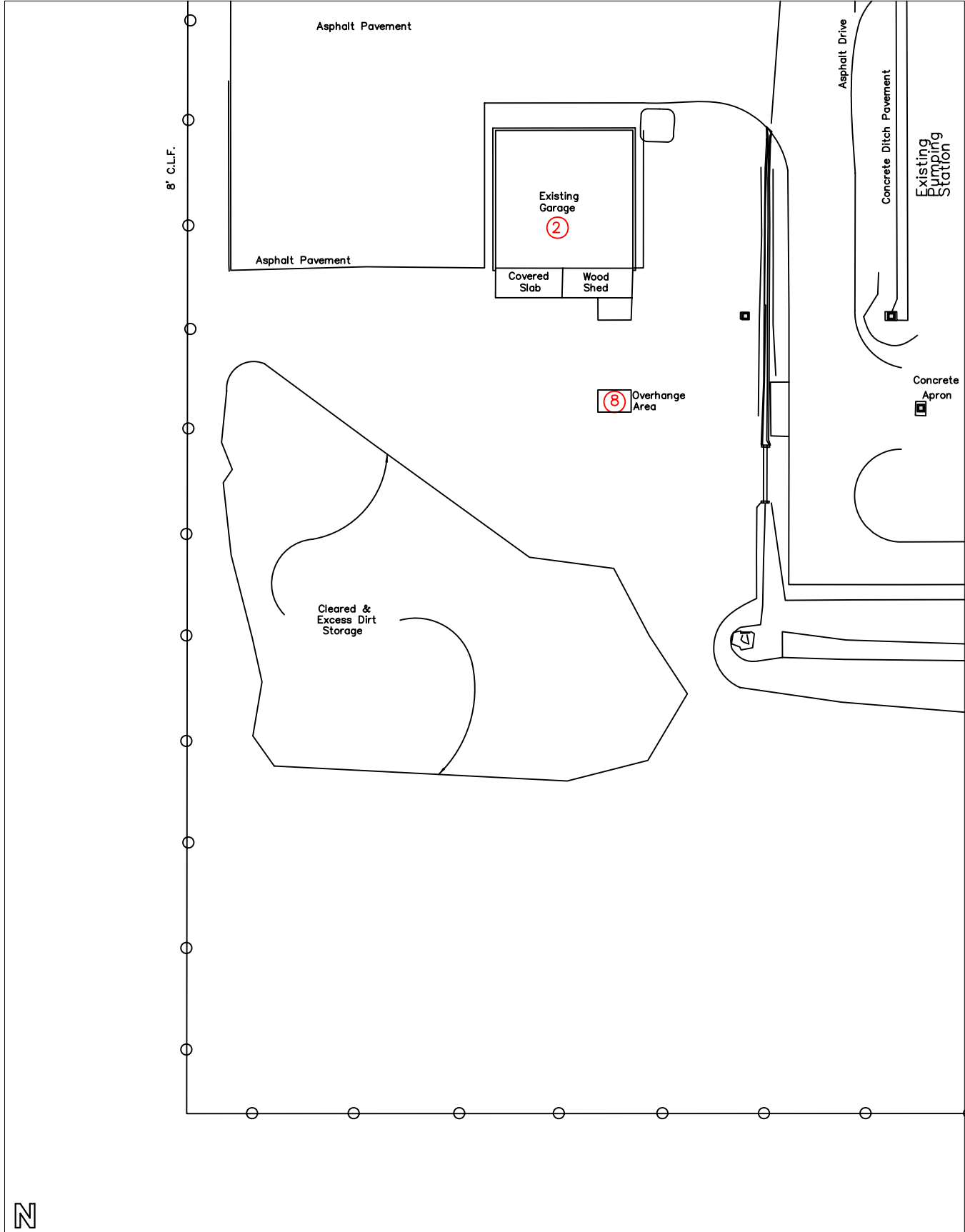
P-1



MATCH LINE "2" to pg 6

MATCH LINE "B" to pg 1

MATCH LINE "1"



MATCH LINE "2" to pg 3

N

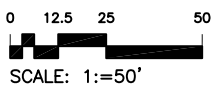
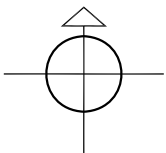
MATCH LINE "A"



Building Community.

SOUTHWEST WWTP

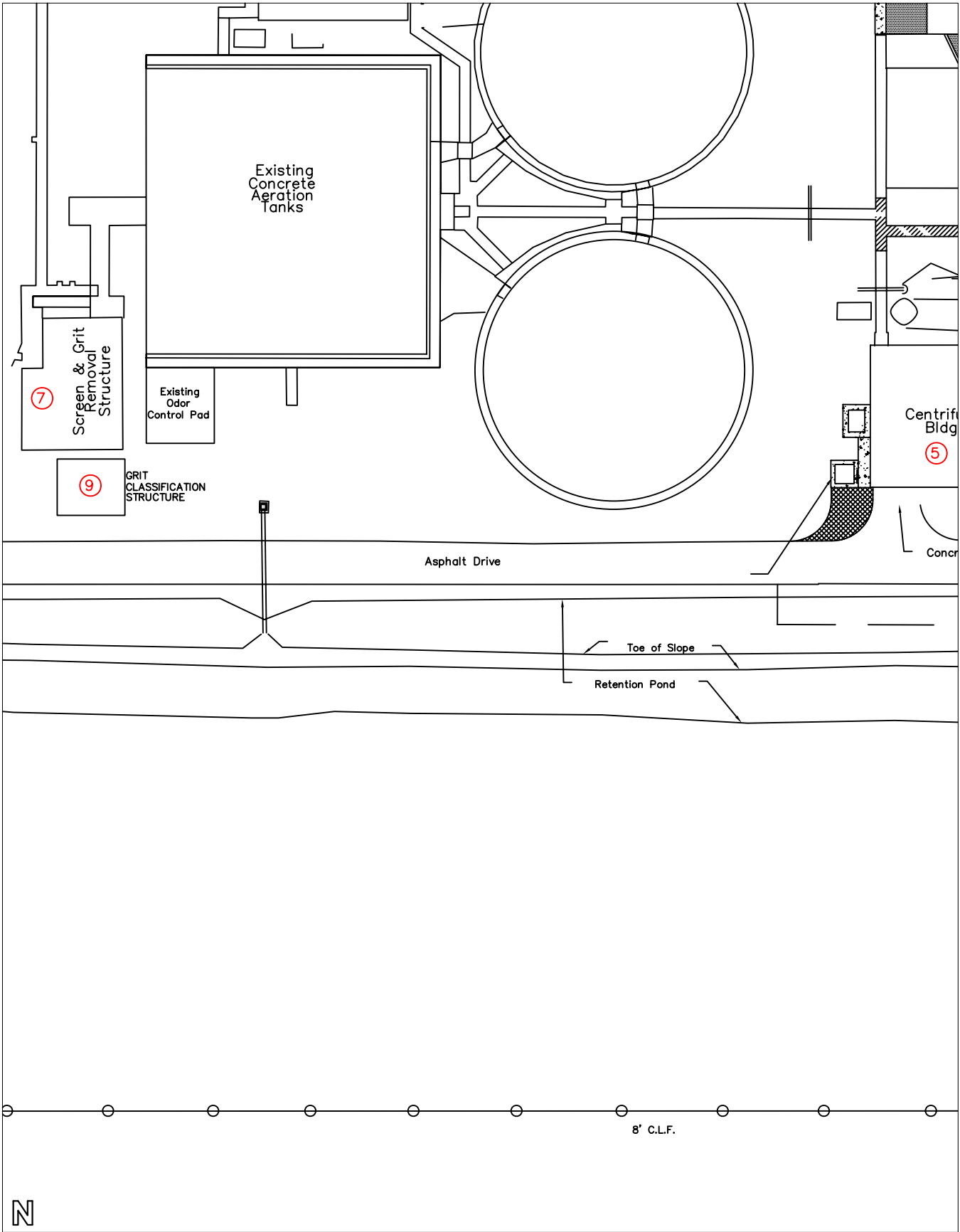
P-2



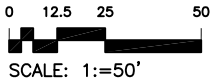
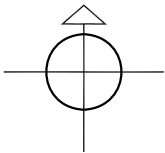
MATCH LINE "B"

MATCH LINE "2" to pg 2

MATCH LINE "3" to pg 4



MATCH LINE "A"

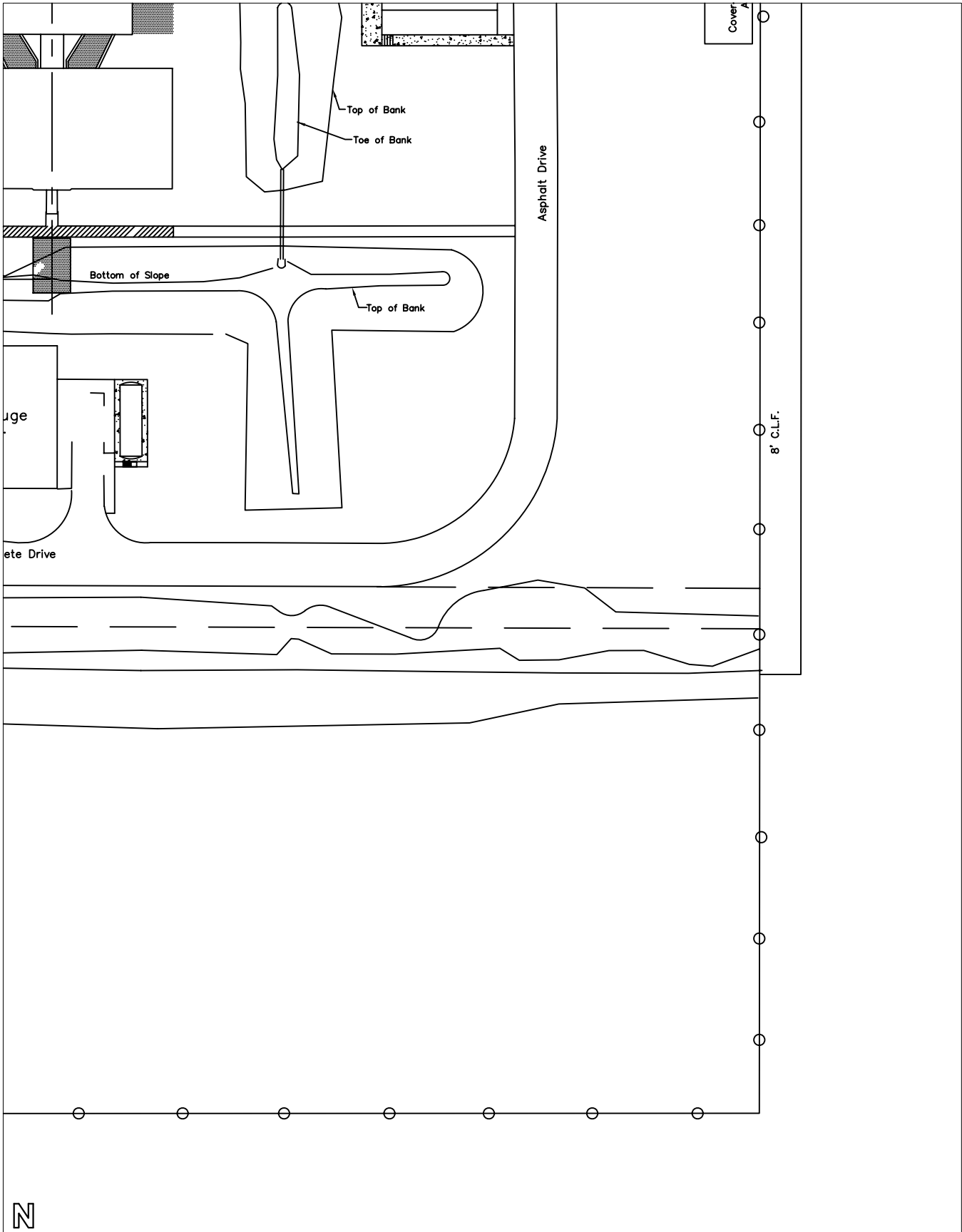


SOUTHWEST WWTP

P-3

MATCH LINE "B" to pg 5

MATCH LINE "3" to pg 3



MATCH LINE "3"

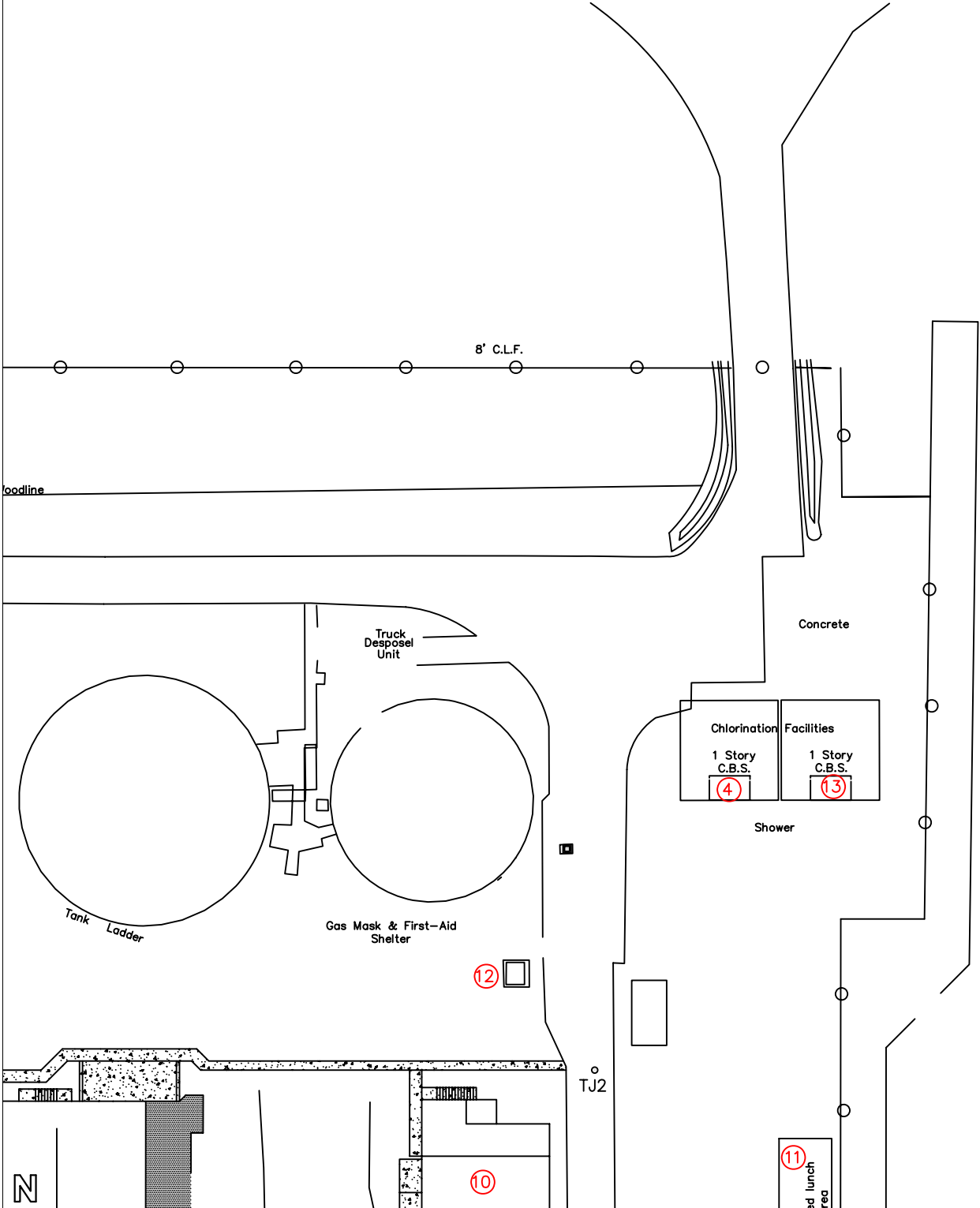
MATCH LINE "A"



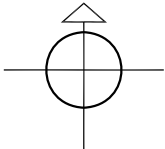
MATCH LINE "C"

MATCH LINE "3" to pg 6

MATCH LINE "4"



MATCH LINE "B" to page 4



0 12.5 25 50  
SCALE: 1"=50'



SOUTHWEST WWTP

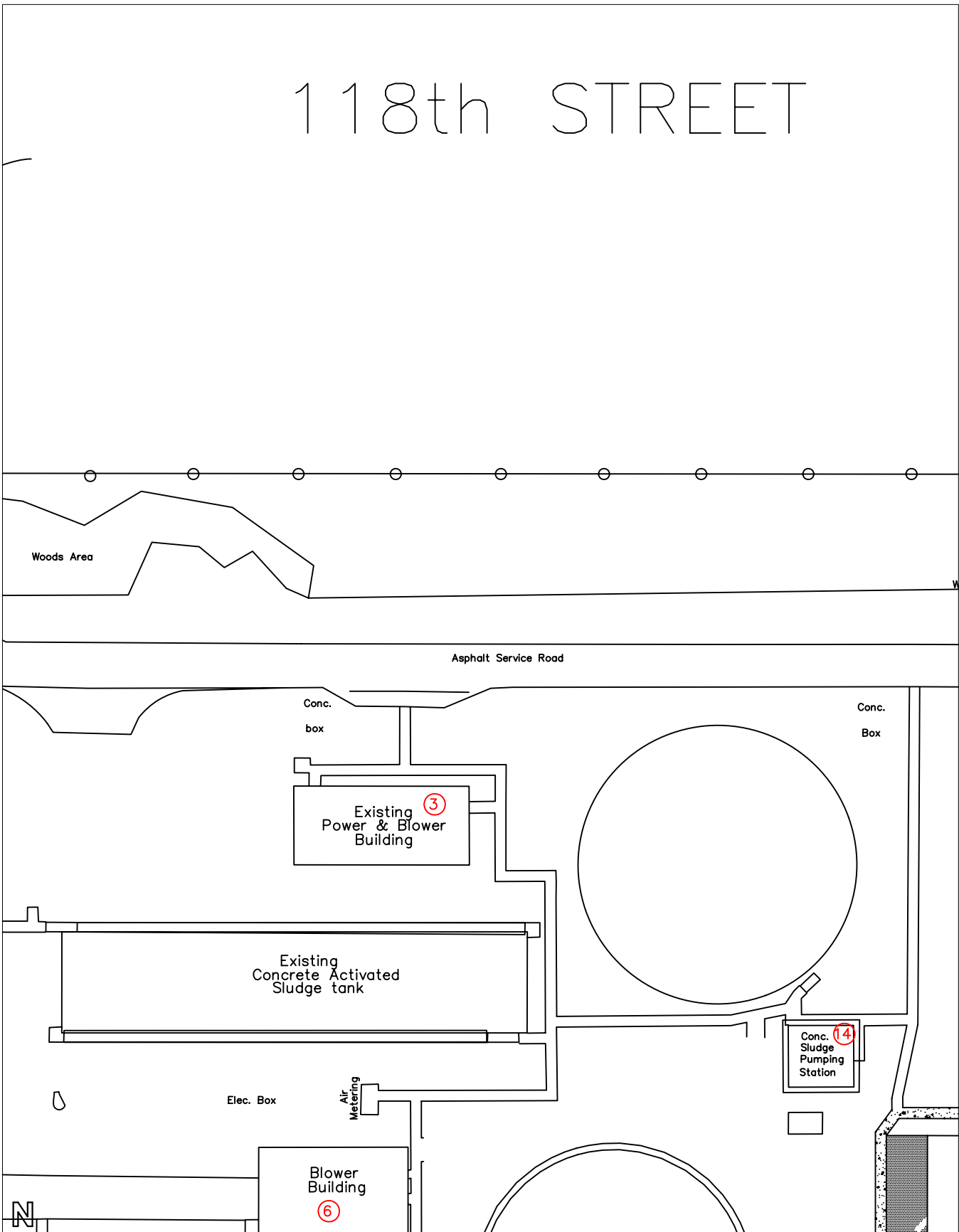
P-5

MATCH LINE "C"

118th STREET

MATCH LINE "2" to pg 1

MATCH LINE "3" to pg 5



MATCH LINE "B"

