

NOTES

1. FOR GENERAL NOTES, DESIGN CRITERIA & DESIGN SPECIFICATIONS, SEE DRAWING CUUU-S5500.

2. FOR FUEL TANK FOUNDATIONS, SEE DRAWING CFOA-S5501.

3. FOR GRADING PLAN SEE CSTF-S3030 SERIES DRAWINGS.

4. EMBED HDPE PPOLYLOCK INTO EACH FACE OF FOUNDATIONS' INSIDE CONTAINMENT AREA AND EXTRUSION HDPE GEOMEMBRANE LINER TO POLYLOCK, SEE DRAWING CFOA-3720 FOR DETAILS.

NOT TO BE USED
FOR CONSTRUCTION

THE DISTRIBUTION AND USE OF THE NATIVE FORMAT CAD FILE OF THIS DRAWING IS UNCONTROLLED. THE USER SHALL VERIFY TRACEABILITY OF THIS DRAWING TO THE LATEST CONTROLLED VERSION.

JEA
GREENLAND ENERGY CENTER
FUEL OIL STORAGE CONTAINMENT
FOUNDATIONS-PIPING SLEEPERS

PROJECT NUMBER:
196116-CFOA-S5503

ENGINEER: PAB
CHECKED:

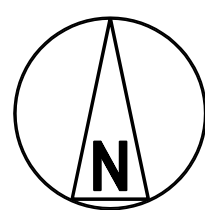
DRAWN: SAJ
DATE:

REVISIONS

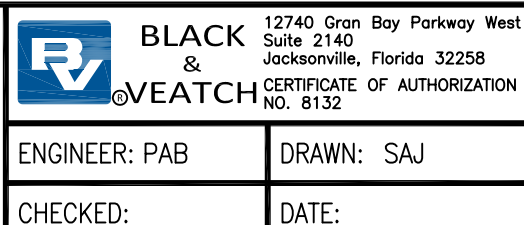
REV
0

JOH57765 ACAD 18.2s (LMS Tech) 07/25/17 13:56:28 34" x 44"

NO	DATE	REVISIONS AND RECORD OF ISSUE	SAJ	PAB	JCB	EEB	DRN	DES	CHK	PDE	APP
0	26/JUL/2017	ISSUED FOR BIDS									



PRINTED COPIES OF THIS DOCUMENT ARE NOT CONSIDERED SIGNED AND SEALED AND THE SIGNATURE MUST BE VERIFIED ON ANY ELECTRONIC COPIES.



ENGINEER: PAB	DRAWN: SAJ
CHECKED:	DATE:

A

B

C

D

E

F

G

H

A

B

C

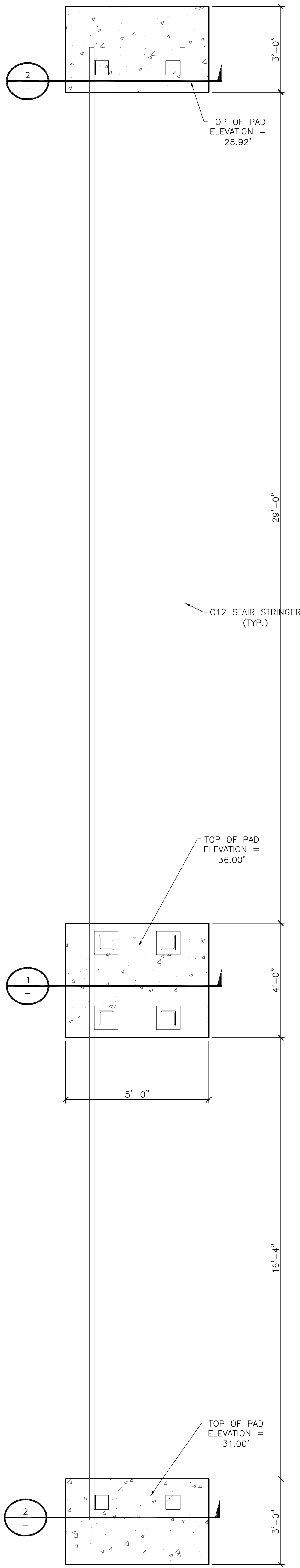
D

E

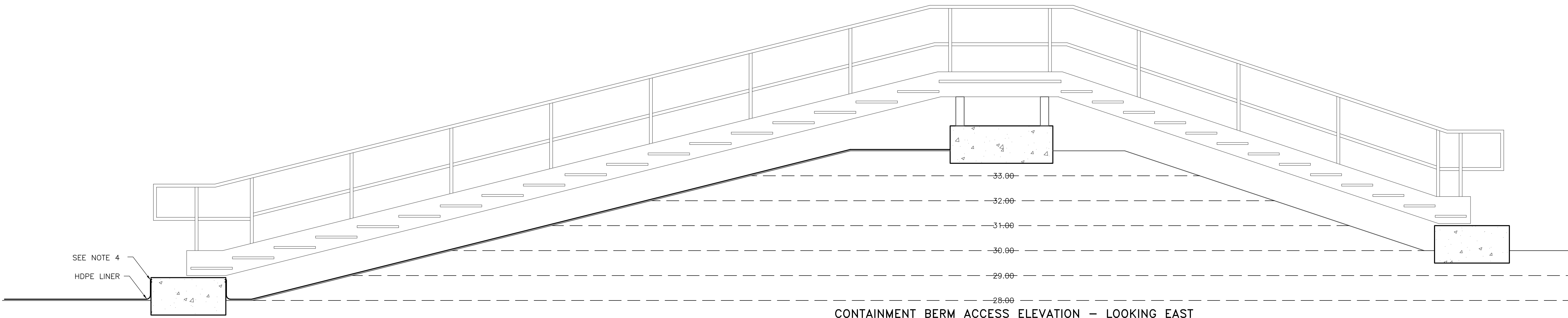
F

G

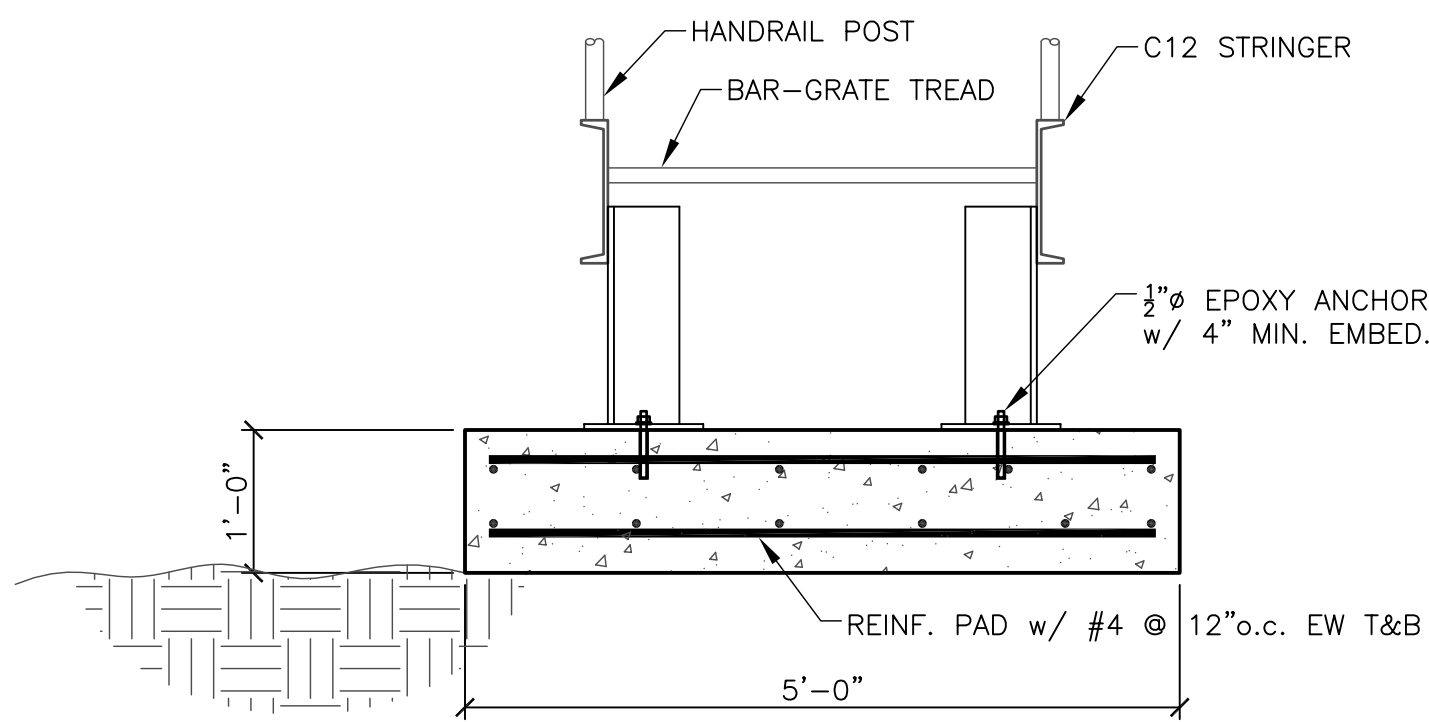
H



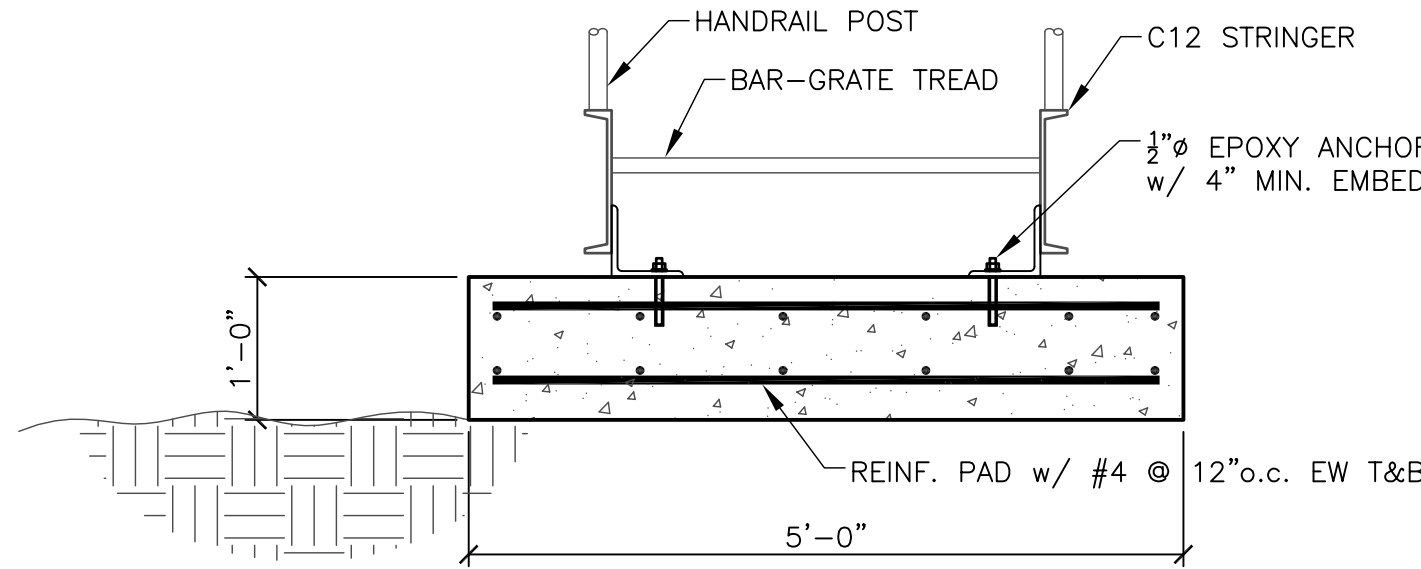
CONTAINMENT BERM ACCESS PLAN
SCALE: 1/2"=1'-0"



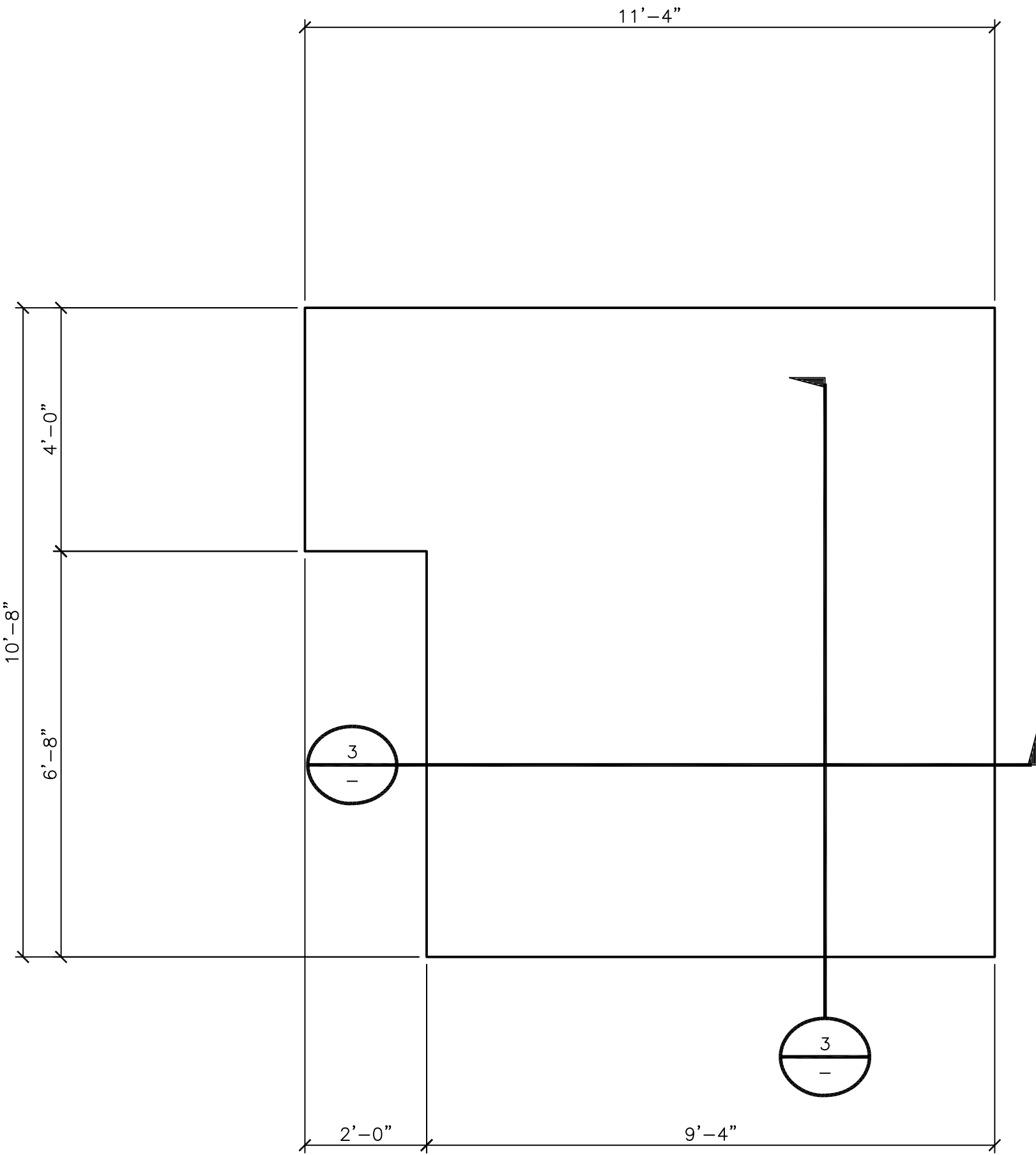
CONTAINMENT BERM ACCESS ELEVATION - LOOKING EAST
SCALE: 1/2"=1'-0"



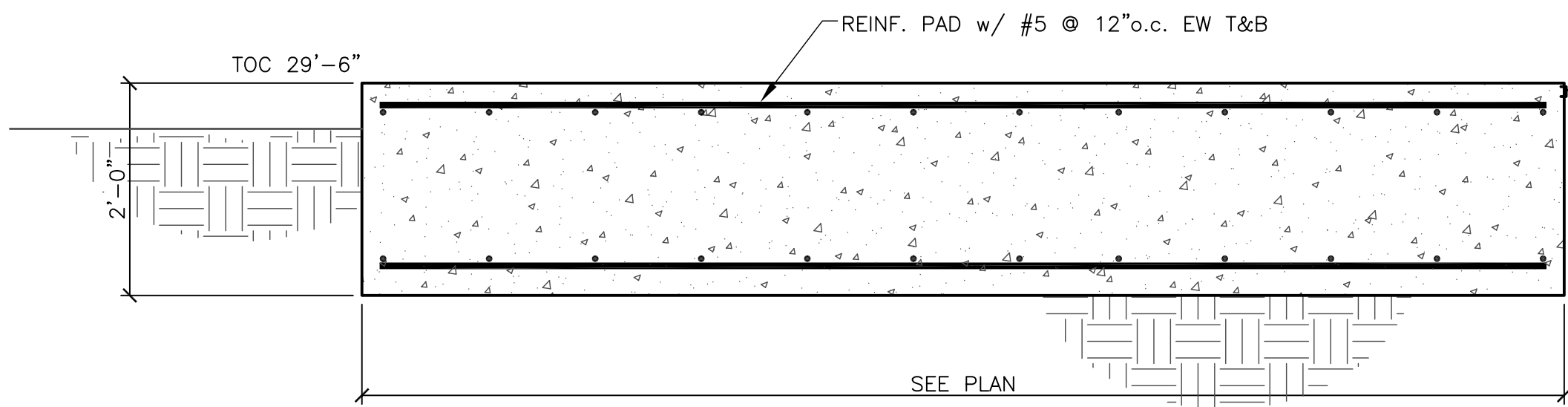
SECTION 1
SCALE: 3/4"=1'-0"
SEE THIS DWG



SECTION 2
SCALE: 3/4"=1'-0"
SEE THIS DWG



FIRE PROTECTION FOAM HOUSE PLAN
SCALE: 1/2"=1'-0"



SECTION 3
SCALE: 3/4"=1'-0"
SEE THIS DWG

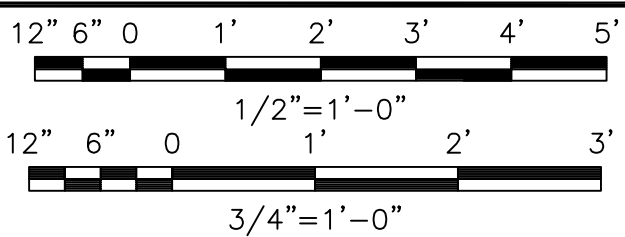
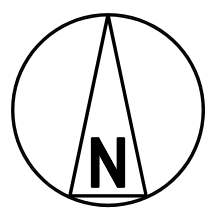
NOTES

1. FOR GENERAL NOTES, DESIGN CRITERIA & DESIGN SPECIFICATIONS, SEE DRAWING CUUU-S5500.
2. FOR STEEL FRAMING OF STAIRS, SEE DRAWING CFOA-S6505.
3. FOR GRADING PLAN SEE CSTF-S3030 SERIES DRAWINGS.
4. EMBED HDPE POLYLOCK INTO EACH FACE OF FOUNDATIONS INSIDE OF CONTAINMENT AREA AND EXTRUSION HDPE GEOMEMBRANE LINER TO POLYLOCK. SEE DRAWING CFOA-S3720 FOR DETAILS.

NOT TO BE USED
FOR CONSTRUCTION

THE DISTRIBUTION AND USE OF THE NATIVE FILE FORMAT OF
THIS DRAWING OUTSIDE OF BLACK & VEATCH IS UNCONTROLLED
AND SHALL BE USED FOR REFERENCE PURPOSES ONLY.

NO	DATE	REVISIONS AND RECORD OF ISSUE	SAJ PAB	JCB EEB	DRN DES	CHK	PDE	APP
0	26/JUL/2017	ISSUED FOR BIDS	SAJ	PAB	JCB	EEB		

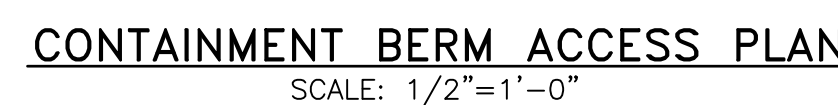
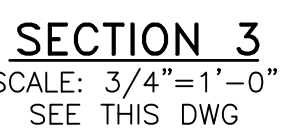
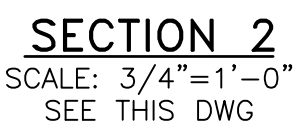
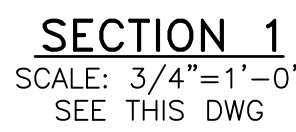
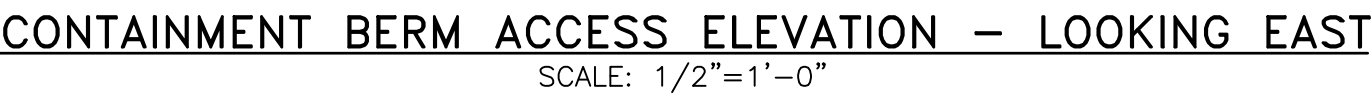


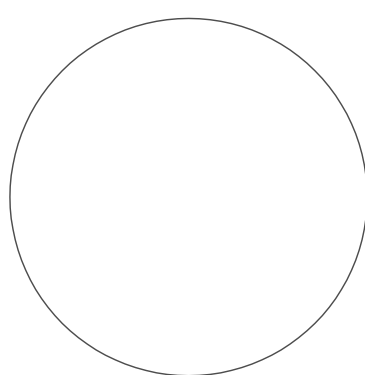
PRINTED COPIES OF THIS DOCUMENT
ARE NOT CONSIDERED SIGNED AND
SEALED AND THE SIGNATURE MUST BE
VERIFIED ON ANY ELECTRONIC COPIES.

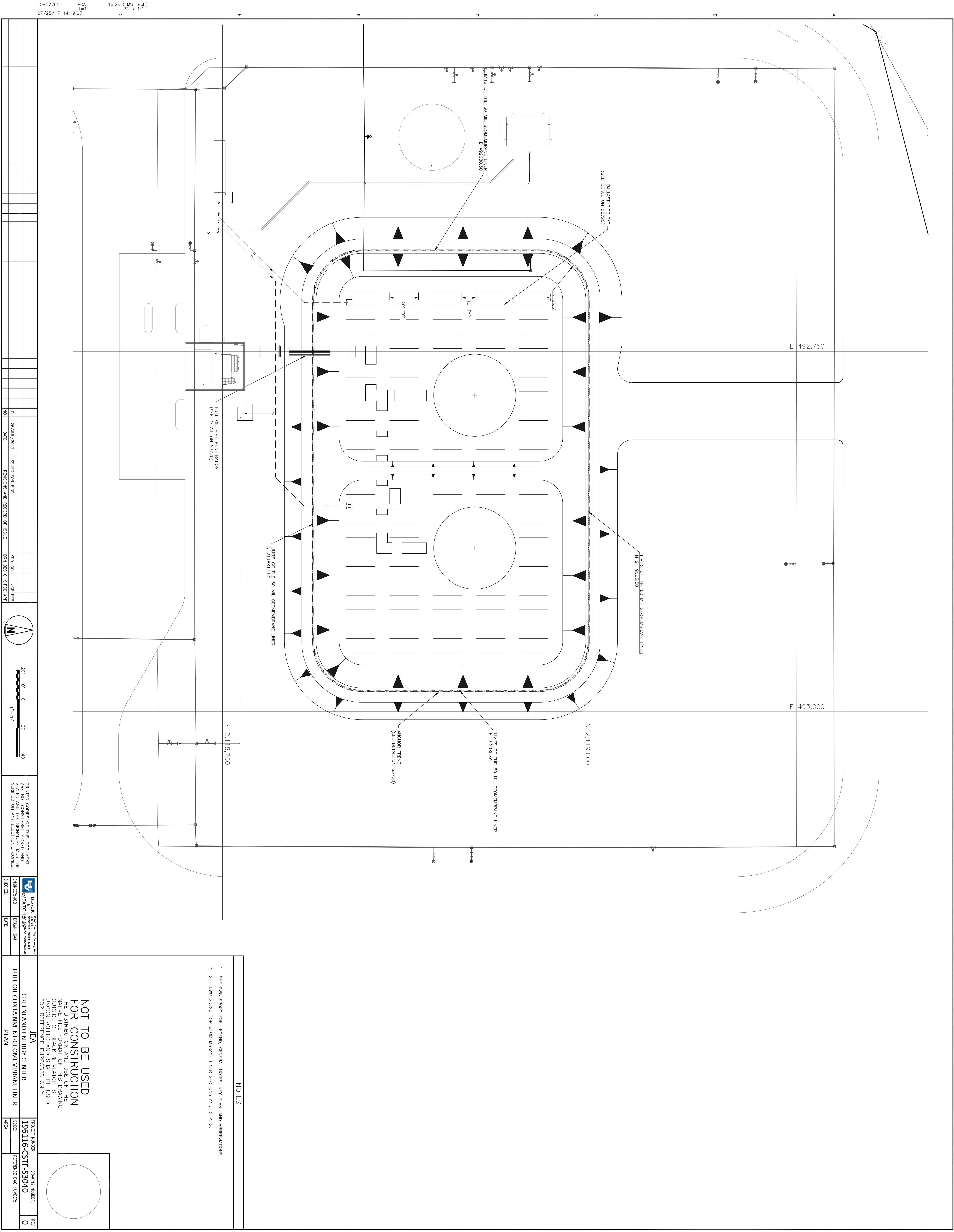
BLACK & VEATCH ENGINEER: PAB CHECKED:	12740 Glen Ray Parkway West Suite 2140 Overland Park, Kansas 66208 CERTIFICATE OF AUTHORIZATION No. 8132 DRAWN: SAJ DATE:
---	---

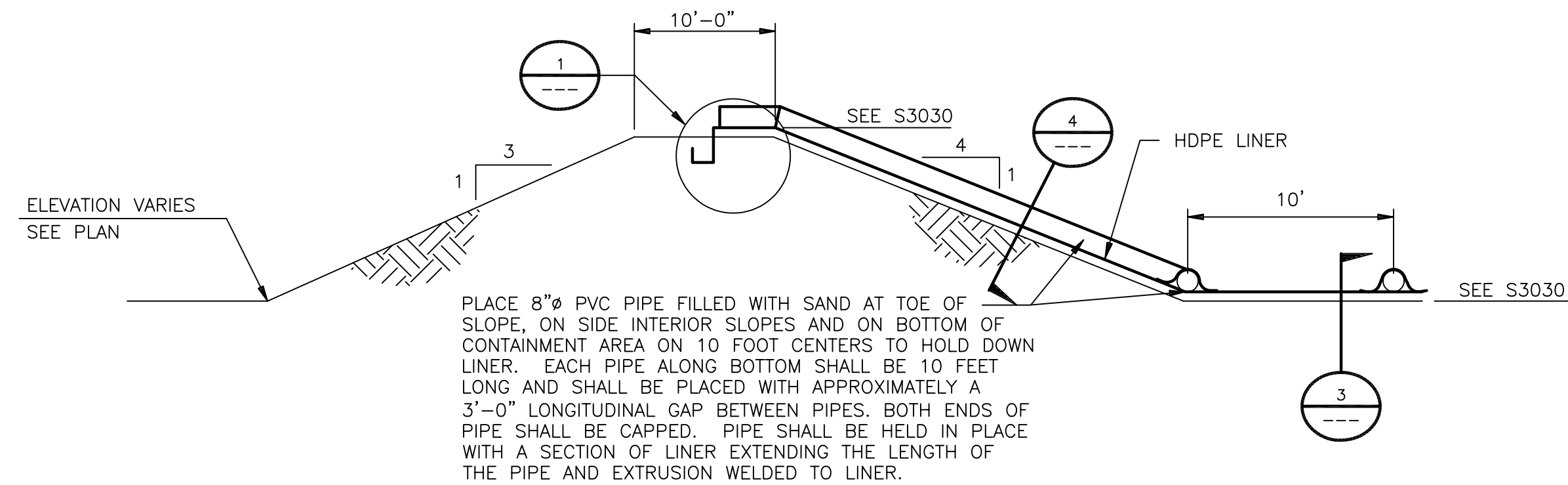
JEA
GREENLAND ENERGY CENTER
FUEL OIL CONTAINMENT
FOUNDATIONS-MISCELLANEOUS

PROJECT NUMBER: 196116-CFOA-S5504	DRAWING NUMBER: 0	REV 0
CODE:	REFERENCE DWG NUMBER:	
AREA:		

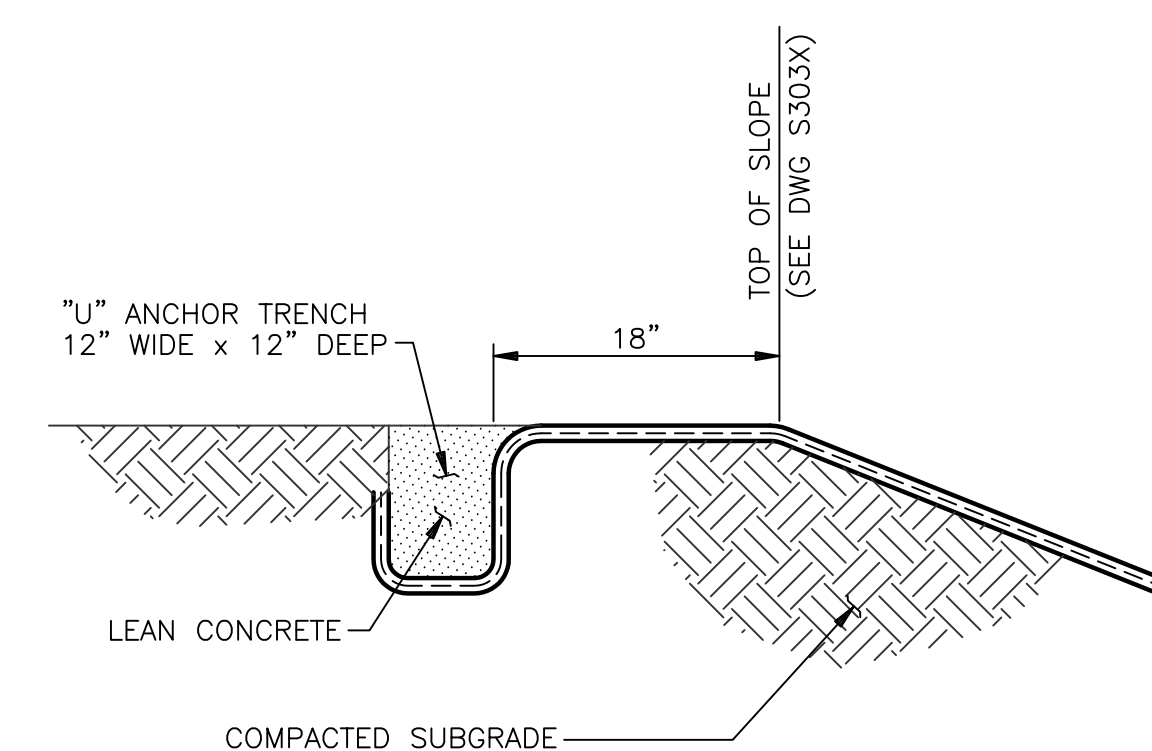


NOTES									
<p>1. FOR GENERAL NOTES, DESIGN CRITERIA & DESIGN SPECIFICATIONS, SEE DRAWING CUUU-S5500.</p>									
<p style="font-size: 24px; font-weight: bold; text-align: center;">NOT TO BE USED FOR CONSTRUCTION</p> <p style="font-size: 12px; text-align: center;">THE DISTRIBUTION AND USE OF THE NATIVE FORMAT CAD FILE OF THIS DRAWING IS UNCONTROLLED. THE USER SHALL VERIFY TRACEABILITY OF THIS DRAWING TO THE LATEST CONTROLLED VERSION.</p>									
<p style="text-align: center; font-weight: bold; font-size: 18px;">JEA</p> <p style="text-align: center; font-weight: bold;">GREENLAND ENERGY CENTER</p>		<table border="1" style="width: 100%; border-collapse: collapse;"> <tr> <td style="width: 50%; padding: 2px;">PROJECT NUMBER:</td> <td style="width: 50%; padding: 2px;">DRAWING NUMBER:</td> <td style="width: 50px; padding: 2px;">REV</td> </tr> <tr> <td style="padding: 2px;">196116-CFOA-S6001</td> <td style="padding: 2px;">196116-CFOA-S6001</td> <td style="text-align: center; padding: 2px;">0</td> </tr> </table>		PROJECT NUMBER:	DRAWING NUMBER:	REV	196116-CFOA-S6001	196116-CFOA-S6001	0
PROJECT NUMBER:	DRAWING NUMBER:	REV							
196116-CFOA-S6001	196116-CFOA-S6001	0							
<p style="text-align: center; font-weight: bold;">FUEL OIL CONTAINMENT STEEL-MISCELLANEOUS</p>		<table border="1" style="width: 100%; border-collapse: collapse;"> <tr> <td style="width: 50%; padding: 2px;">CODE:</td> <td style="width: 50%; padding: 2px;">REFERENCE DWG NUMBER:</td> </tr> <tr> <td style="padding: 2px;">AREA:</td> <td style="padding: 2px;"></td> </tr> </table>		CODE:	REFERENCE DWG NUMBER:	AREA:			
CODE:	REFERENCE DWG NUMBER:								
AREA:									

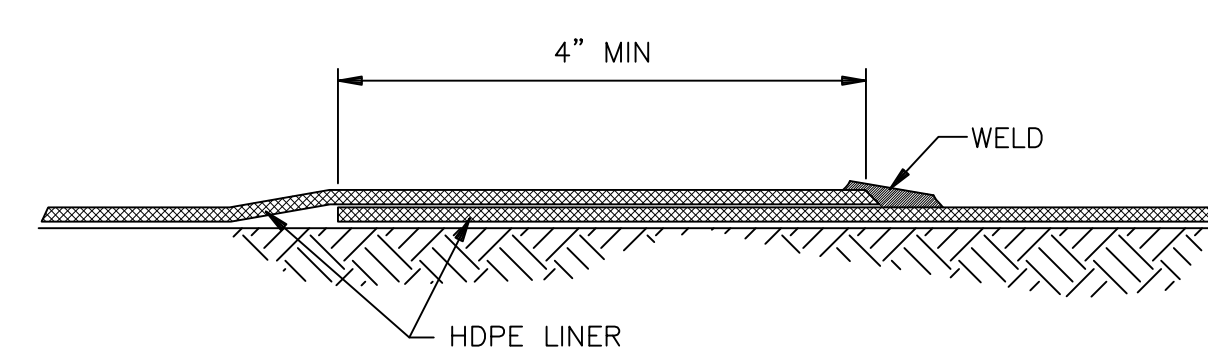




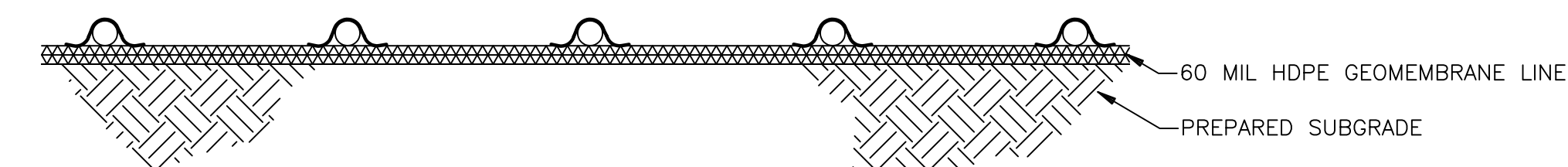
TYPICAL CONTAINMENT BERM SECTION
NO SCALE
SEE DWG S3720



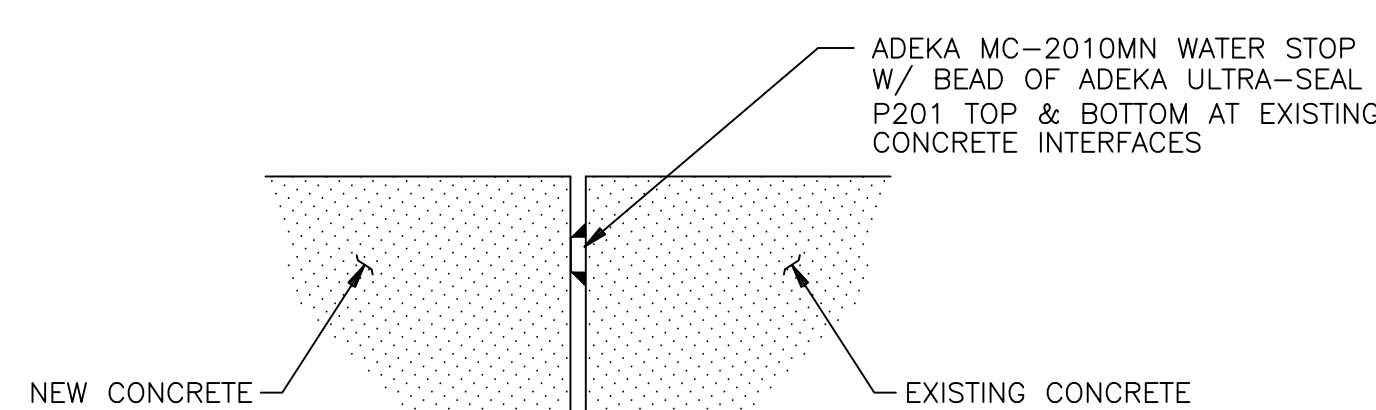
DETAIL 1
TYPICAL "U" ANCHOR TRENCH
NO SCALE
SEE THIS DWG



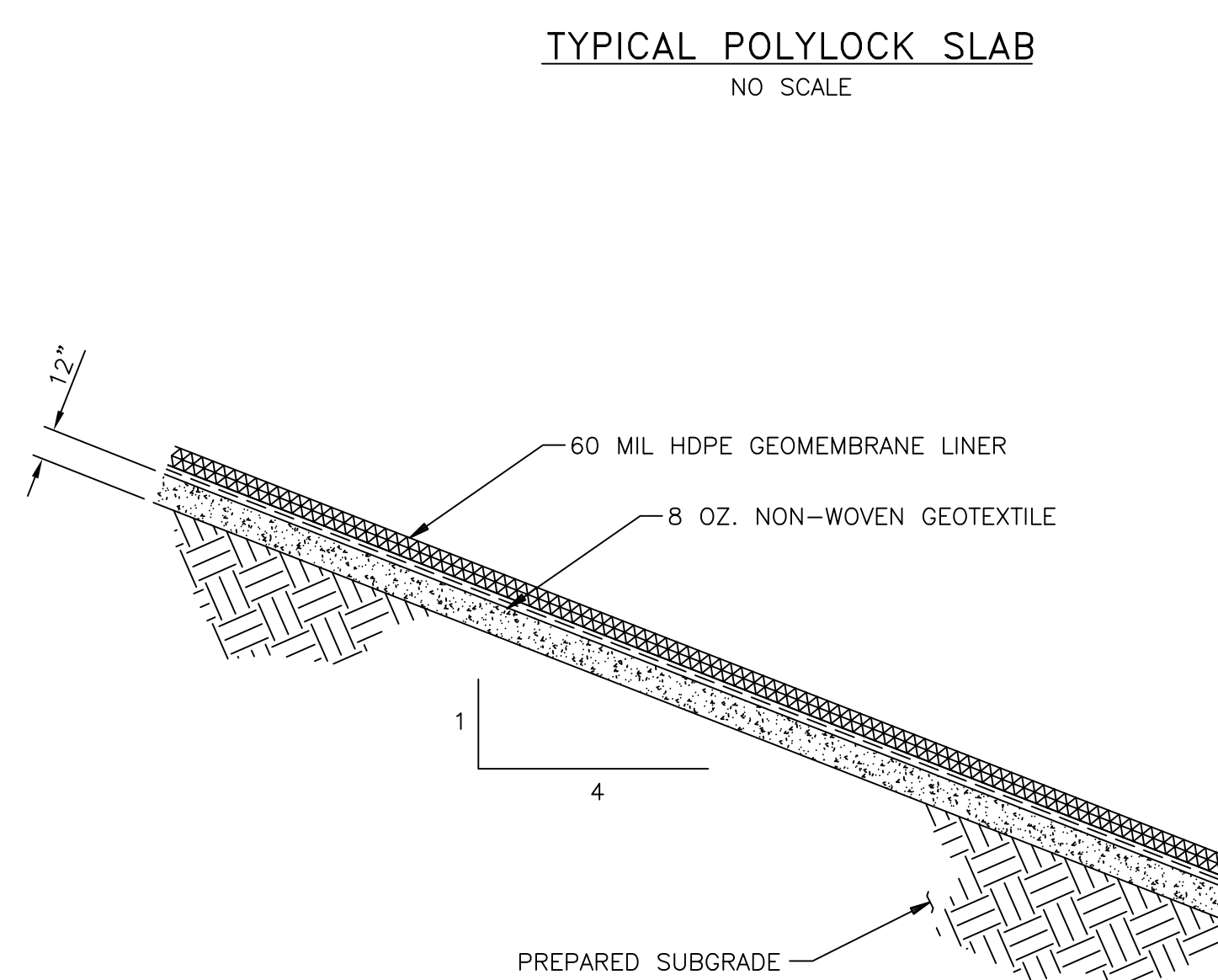
DETAIL 2
TYPICAL FILLET EXTRUSION WELD
NO SCALE



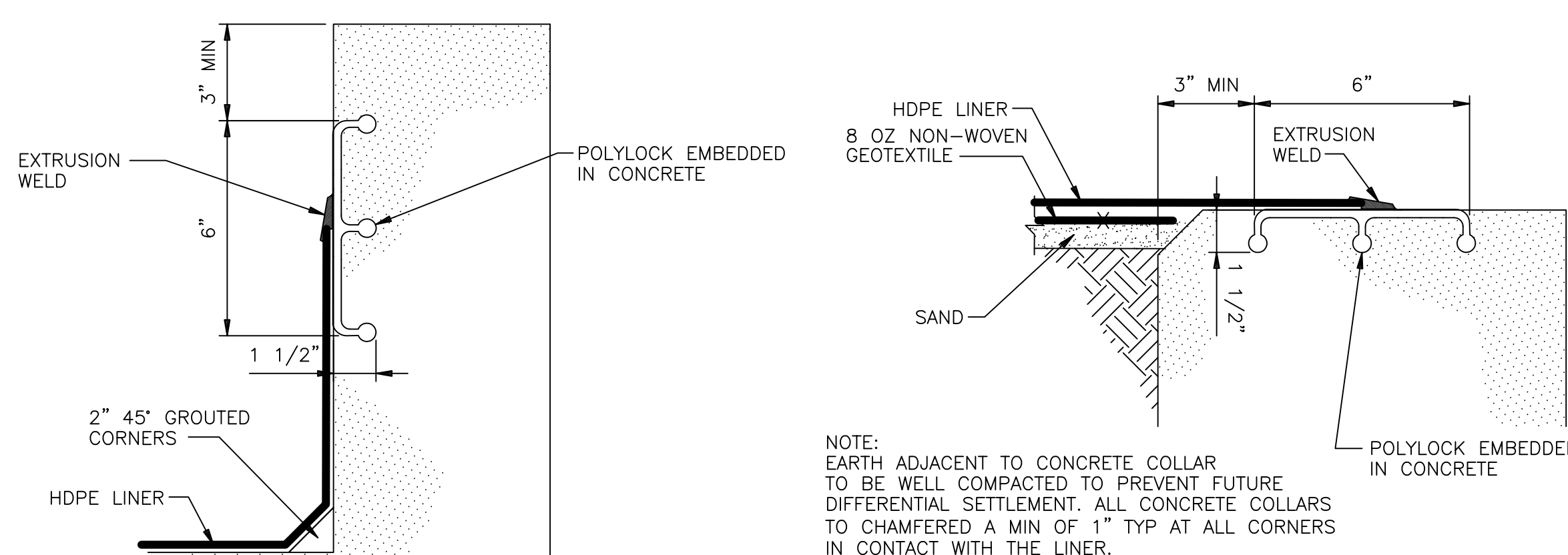
SECTION 3
TYPICAL CONTAINMENT AREA BOTTOM LINER SECTION
NO SCALE



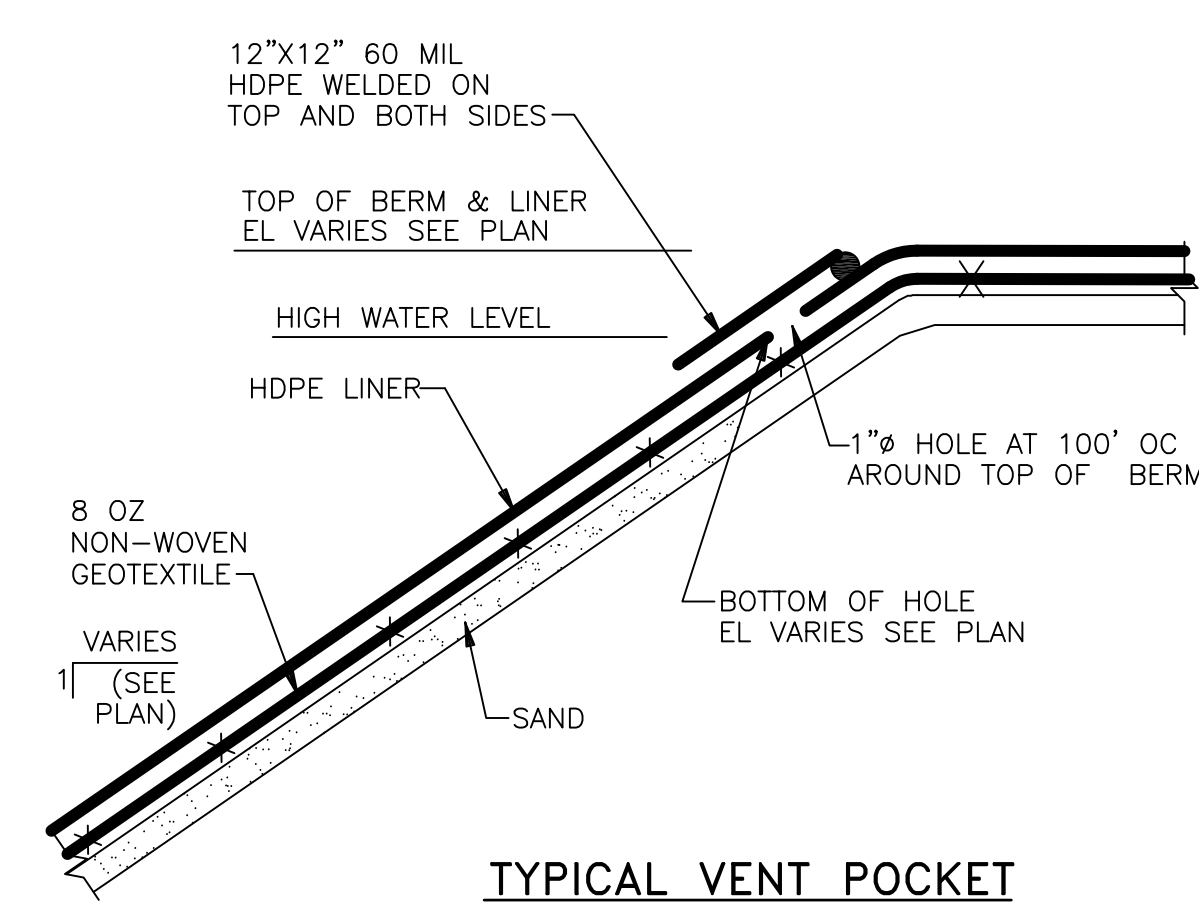
TYPICAL CONTAINMENT AREA CONCRETE CONSTRUCTION JOINT DETAIL



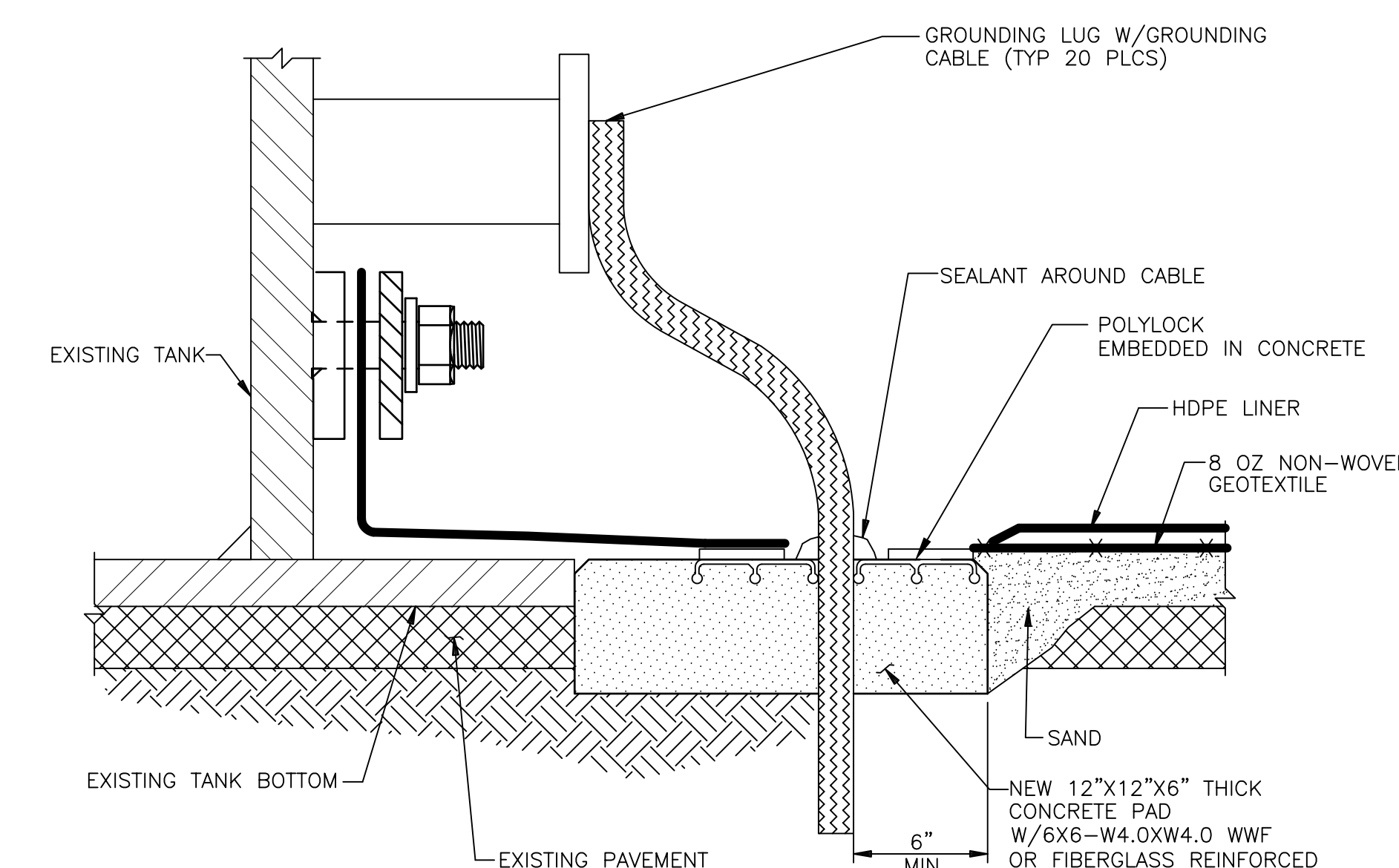
SECTION 4
TYPICAL BERM SLOPE LINER SECTION
NO SCALE



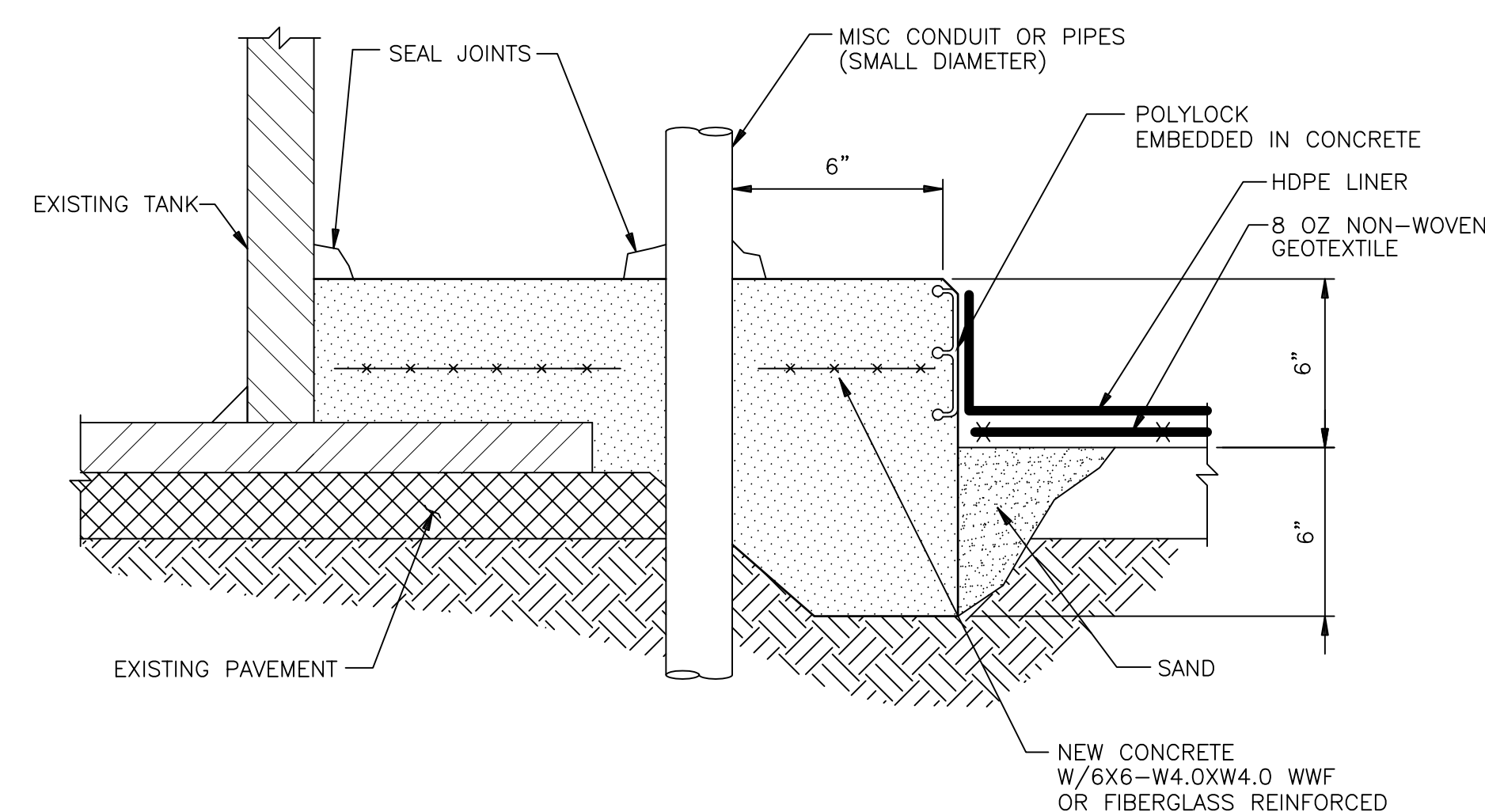
POLYLOCK ATTACHMENT



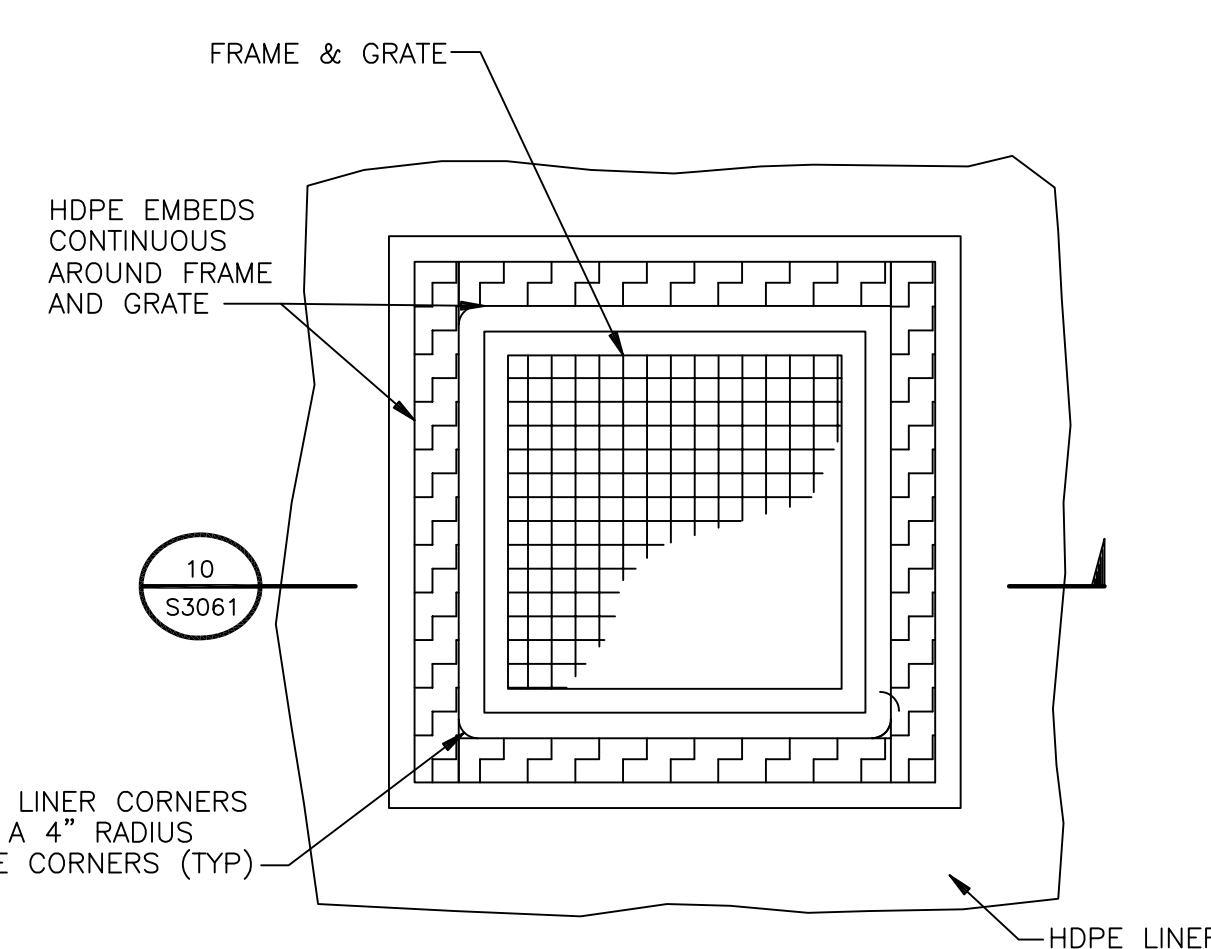
TYPICAL VENT POCKET



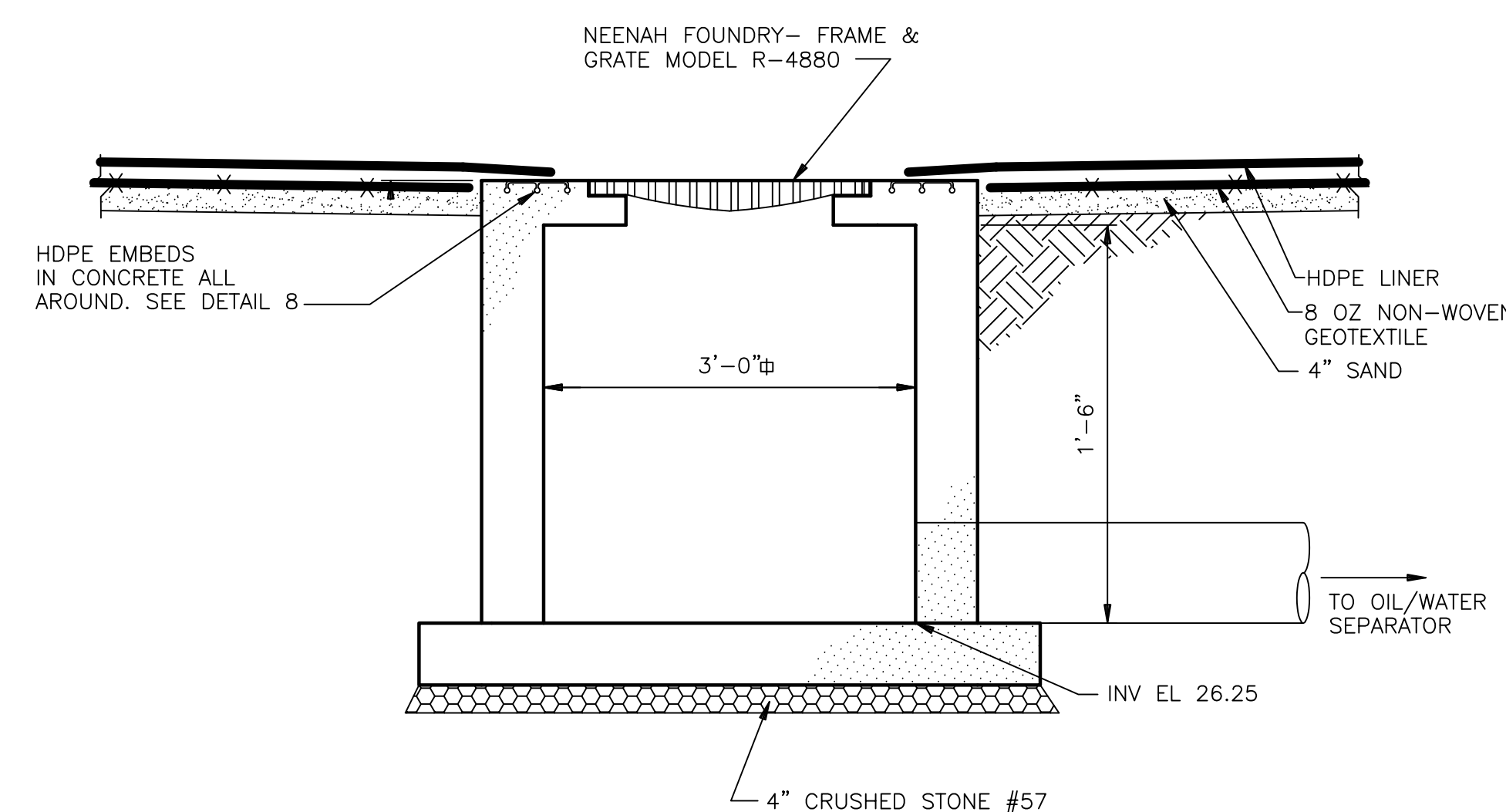
TYPICAL GROUNDING CABLE



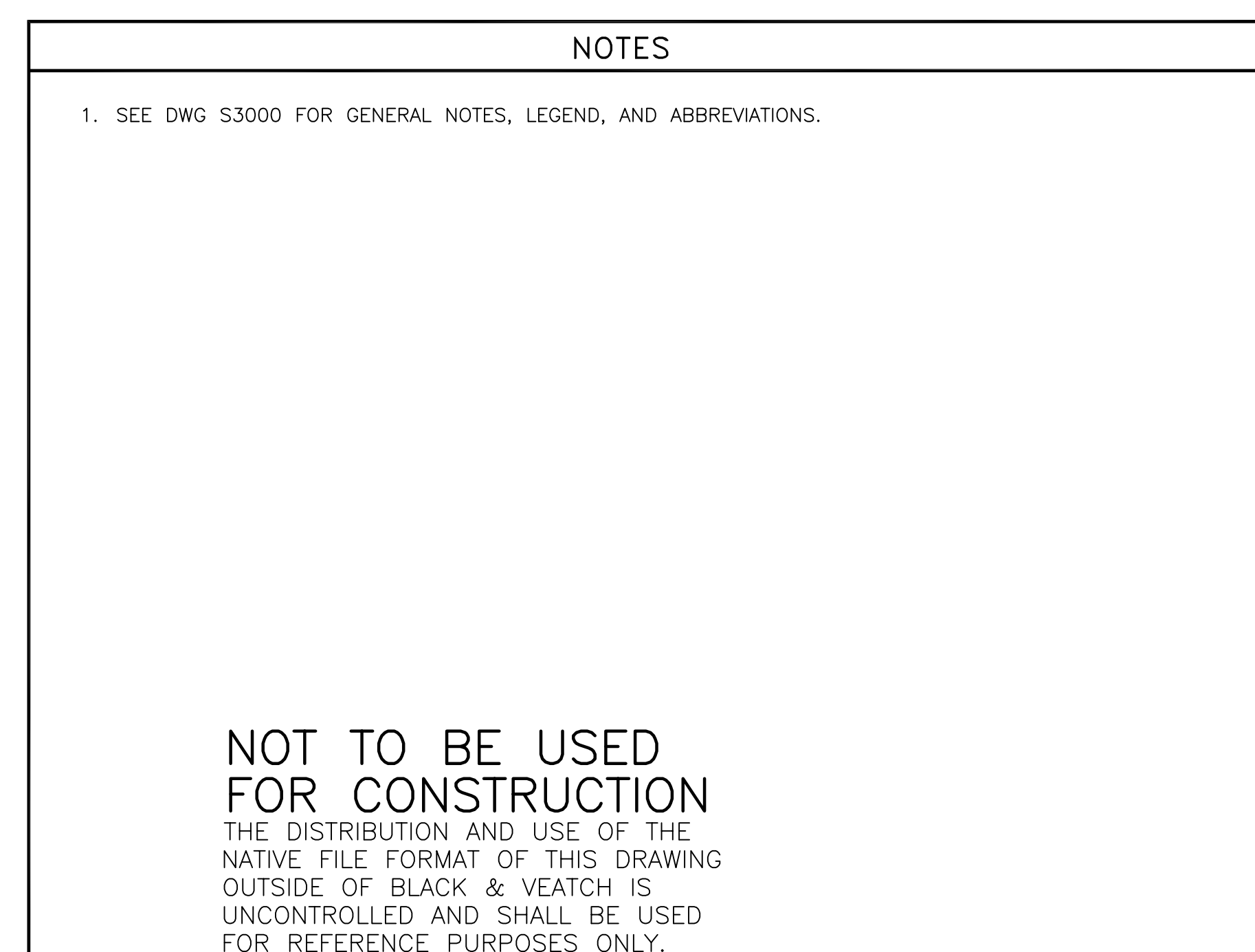
TYPICAL MISC CONDUIT OR PIPE RISER AT TANK



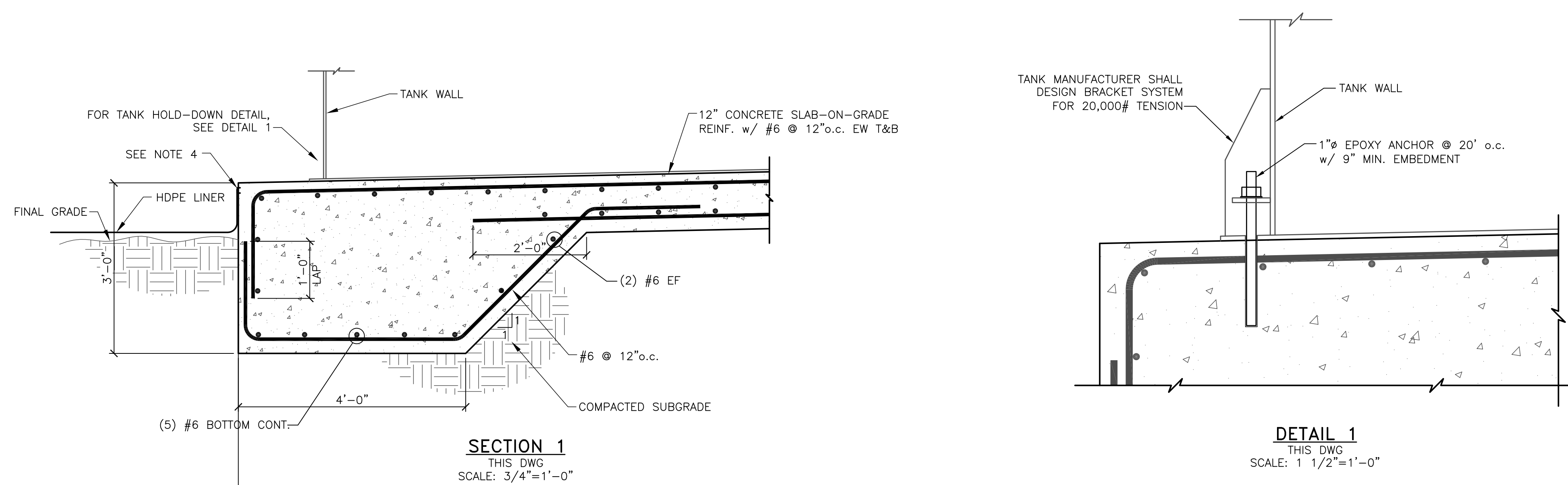
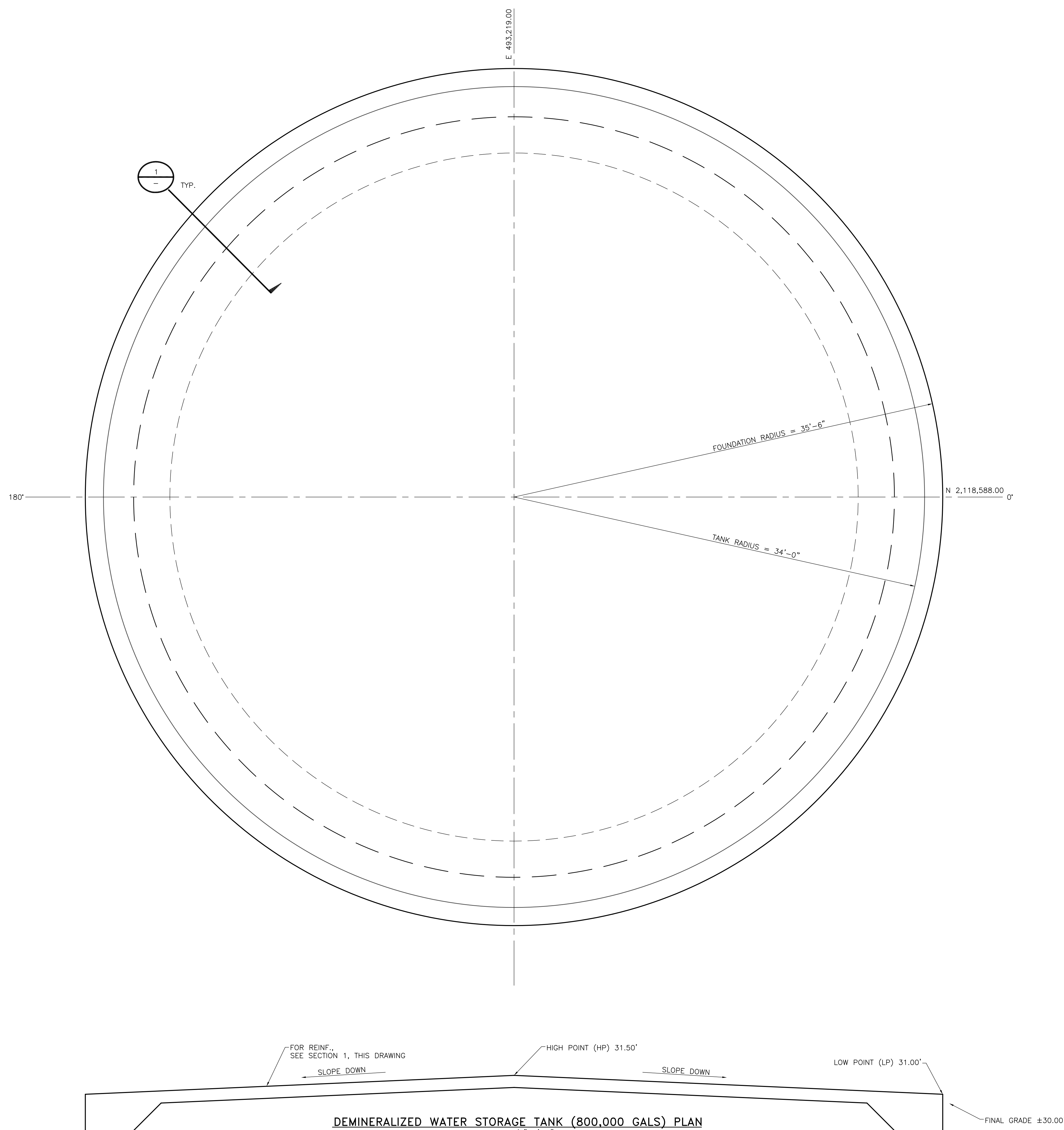
TYPICAL PRECAST CONCRETE DRAIN SUMP



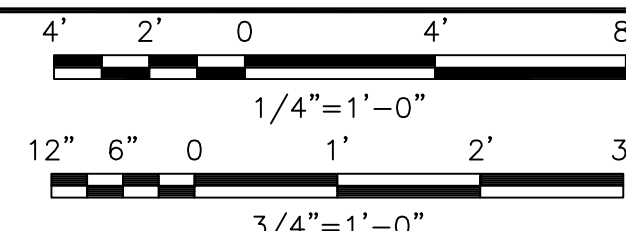
TYPICAL PRECAST CONCRETE DRAIN SUMP


[illegible]

OH57765 1=1 18.2s (LMS Tech)
7/25/17 13:53:28 34" x 44" C



JEA
GREENLAND ENERGY CENTER
DEMINERALIZED WATER SUPPLY & STORAGE TANK
FOUNDATION-PLAN, SECTIONS AND DETAILS

[illegible]

 BLACK & VEATCH	12740 Green Bay Parkway West Suite 2140 Jacksonville, Florida 32258 CERTIFICATE OF AUTHORIZATION NO. 8132
	ENGINEER: PAB DRAWN: SAJ CHECKED: DATE: