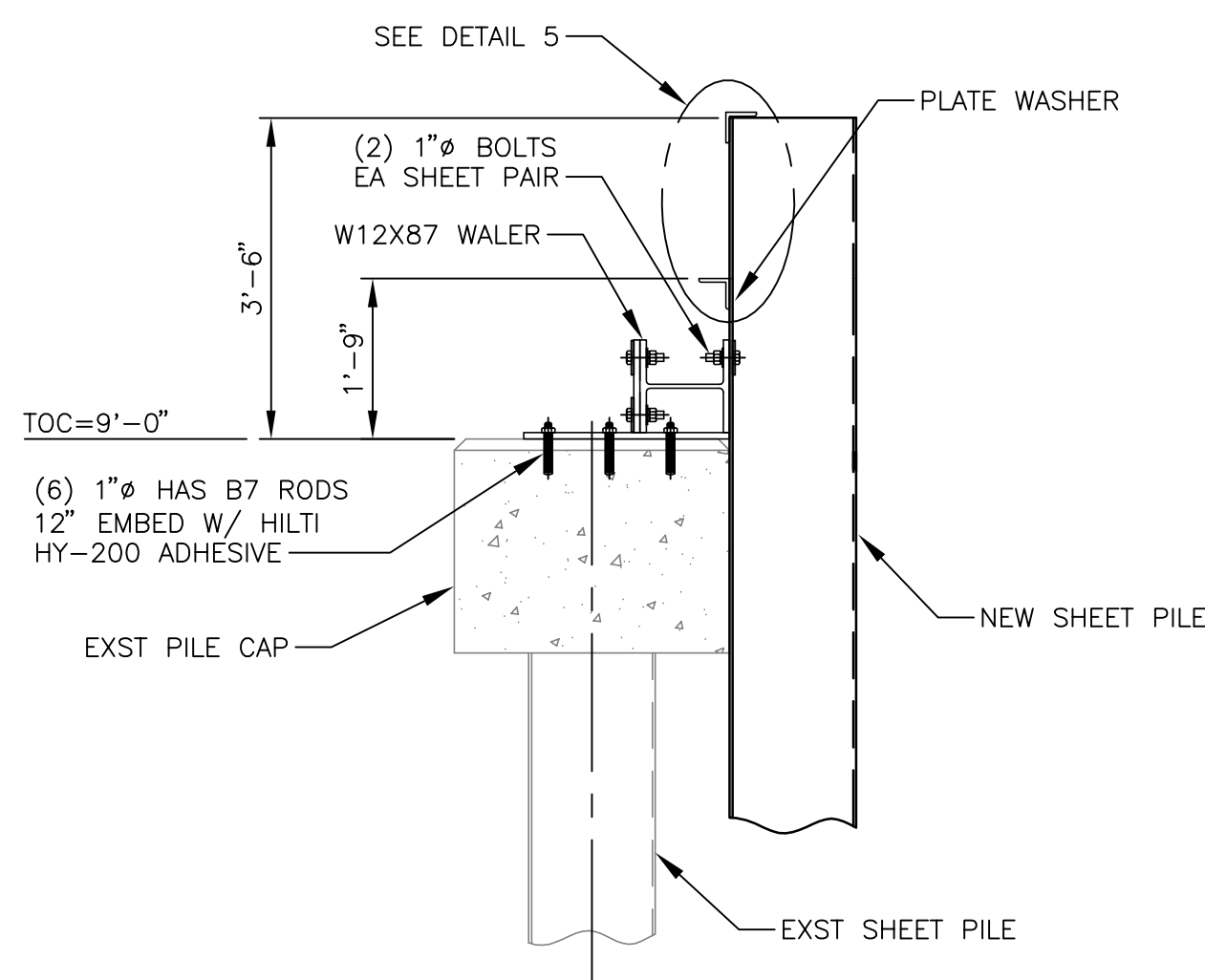
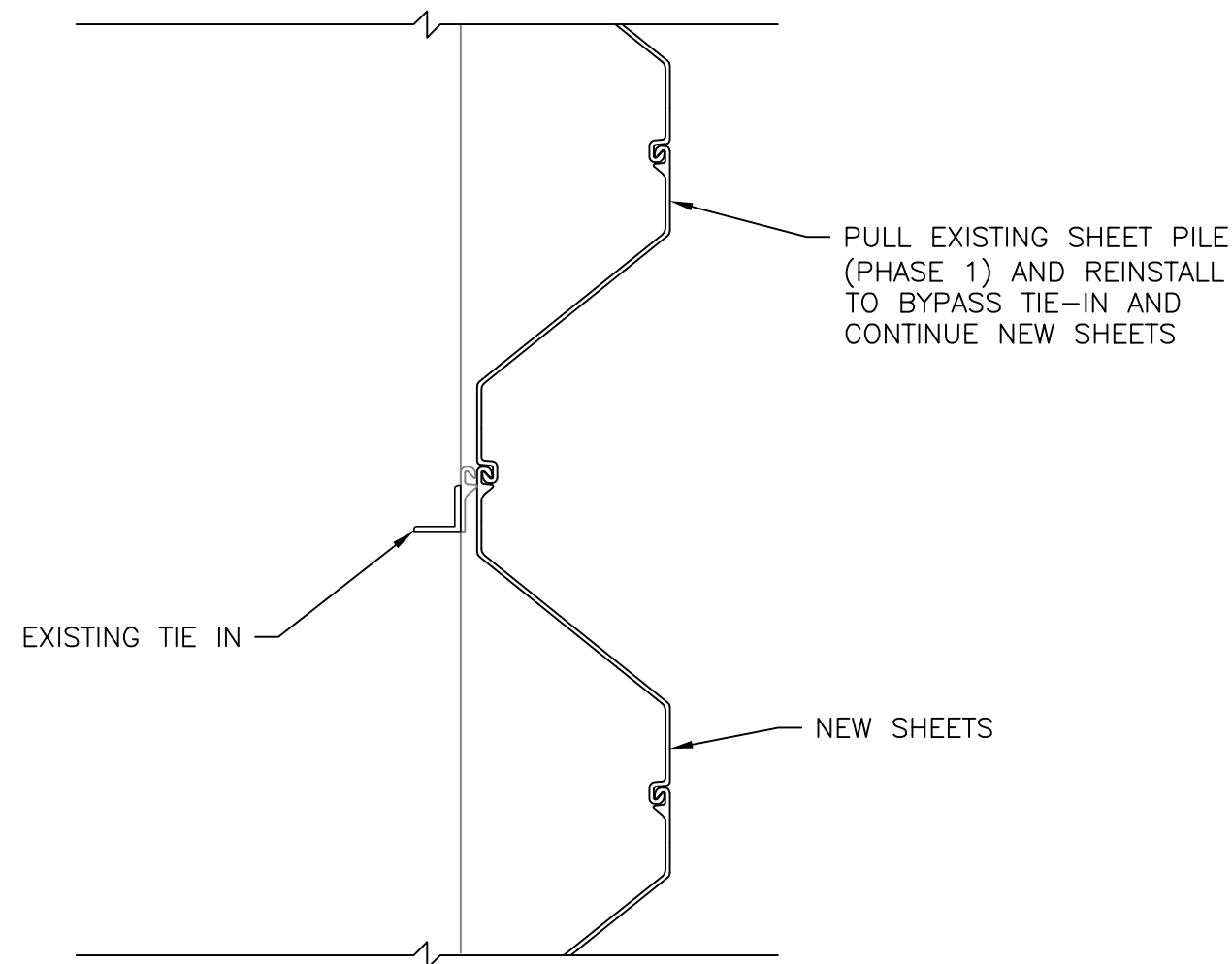


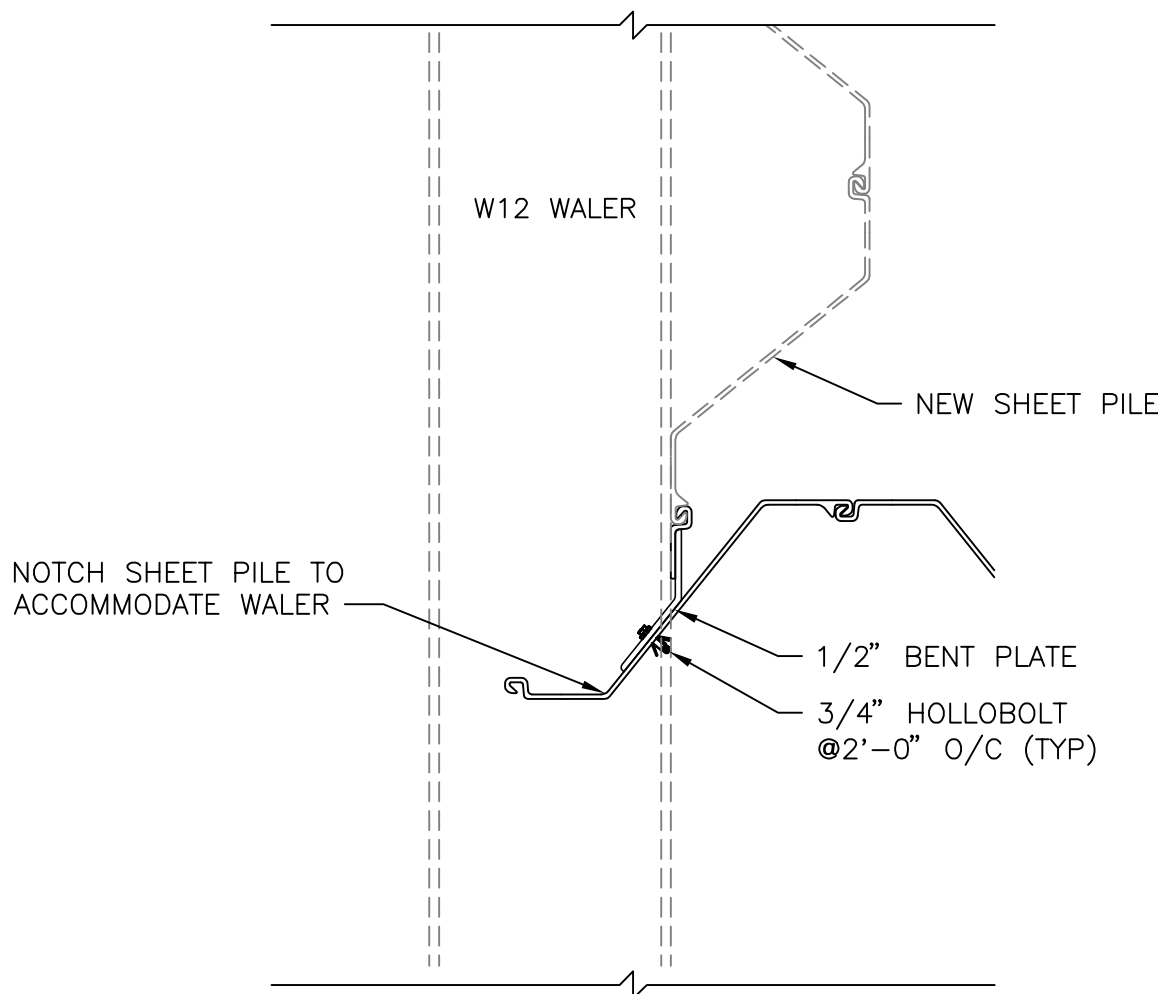
PLAN
3/8"=1'-0"



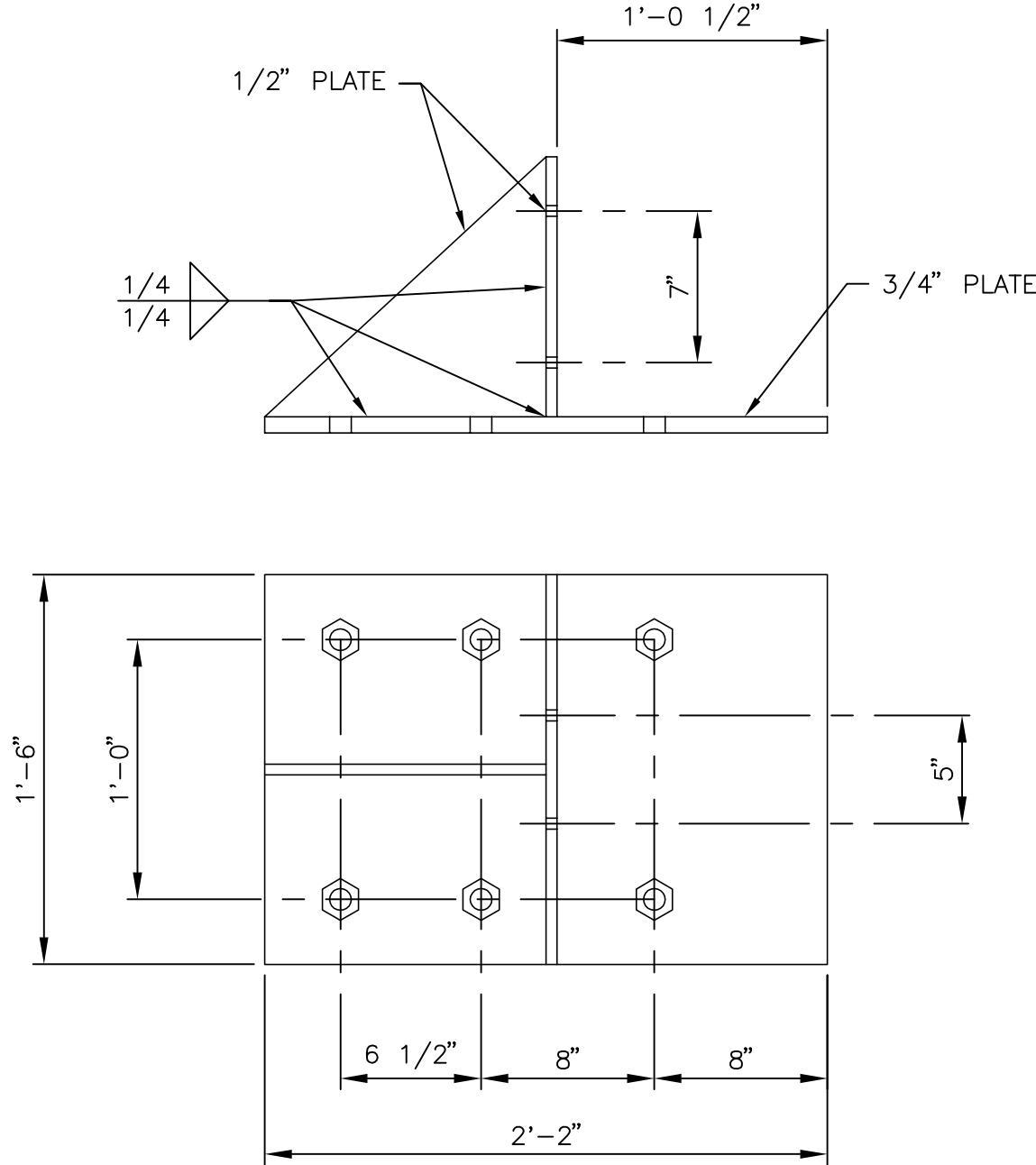
SECTION 1
SCALE: 1/2" = 1'-0"



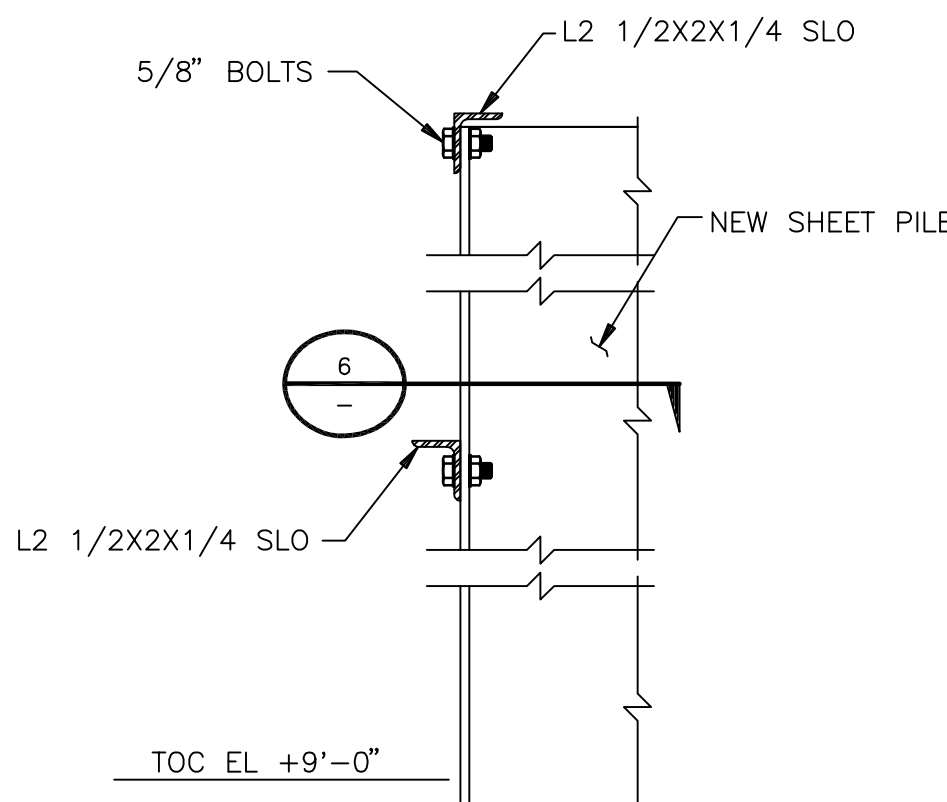
DETAIL 2
SHEET PILE CONNECTION DETAIL
SCALE: 3/4" = 1'-0"



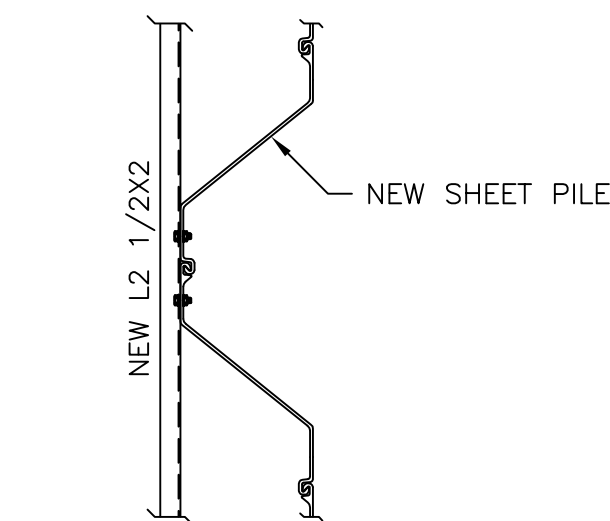
DETAIL 3
SHEET PILE CONNECTION DETAIL
SCALE: 3/4" = 1'-0"



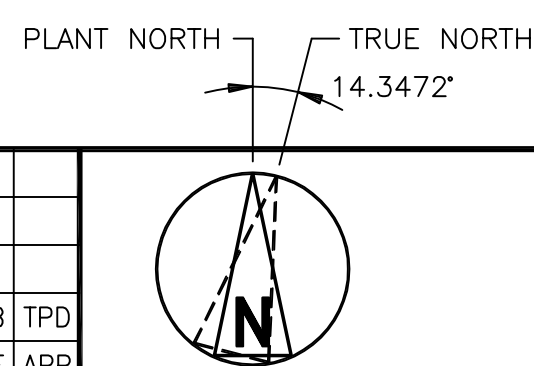
DETAIL 4
WALER CONNECTION DETAIL
SCALE: 1 1/2" = 1'-0"



DETAIL 5
SCALE: 1 1/2" = 1'-0"
SEE THIS DWG



SECTION 6
SCALE: 1 1/2" = 1'-0"
SEE THIS DWG



STRUCTURAL GENERAL NOTES

1. PRIOR TO COMMENCING ANY WORK, THE CONTRACTOR SHALL VERIFY THAT THESE DRAWINGS ARE CONSISTENT WITH EXISTING SITE CONDITIONS. ANY DEVIATIONS SHALL BE BROUGHT TO THE ATTENTION OF THE ENGINEER FOR RESOLUTION.
2. FOR GENERAL NOTES, DESIGN CRITERIA & DESIGN SPECIFICATIONS FOR SHEET PILING, SEE SPECIFICATION 02262 SHEET PILING. SHEET PILES ARE AZ19-700 GRADE A572, 60 FEET LONG.
3. ADHESIVE ANCHORS SHALL BE INSTALLED PER THE MANUFACTURER'S INSTRUCTIONS USING STANDARD EMBEDMENTS AND EDGE DISTANCES UNLESS NOTED OTHERWISE.
4. STRUCTURAL STEEL COMPONENTS SHALL CONFORM TO THE FOLLOWING: WIDE FLANGE SHAPES AND PLATES - ASTM A992 GR 50. CHANNEL AND ANGLE SHAPES - ASTM A36. HSS ASTM A500 (46 KSI).
5. WELDING SHALL CONFORM TO AWS D1.1 (E70 ELECTRODES). WELDING RODS SHALL BE STORED IN ON-SITE OVENS PLUGGED IN AT ALL TIMES. WELDING IS TO BE PERFORMED BY CERTIFIED AWS WELDERS AND CERTIFICATIONS SHALL BE SUBMITTED BEFORE COMMENCING WORK.
6. ALL STRUCTURAL STEEL SHAPES, PLATES, THREADED RE-BAR, AND FASTENERS SHALL BE HOT DIPPED GALVANIZED UNLESS NOTED OTHERWISE.
7. ALL DAMAGES TO COATING SHALL BE REPAIRED AFTER INSTALLATION OF SHEET PILE. EXPOSED EDGES ON THE TOP OF THE SHEETS SHALL BE SMOOTH WITH ANY SHARP EDGES REMOVED PRIOR TO COATING REPAIR AND HAND RAIL SYSTEM INSTALLATION.
8. CONTRACTOR IS RESPONSIBLE FOR RESOLVING INTERFERENCES INSIDE THE BASIN. THIS INCLUDES BUT IS NOT LIMITED TO:
-EXISTING HANDRAIL ATTACHED TO THE EAST SIDE OF THE PLATFORM SHALL BE REMOVED PRIOR TO SHEET PILE INSTALLATION.
9. WHEN THE INTAKE STRUCTURE IS REMOVED IN THE FUTURE THE PORTION OF THE CAP AND SHEET PILE EAST OF THIS LINE SHALL REMAIN IN PLACE FOR STABILITY OF THE DISCHARGE STRUCTURE AND WALIER. SCORE THE TOP OF THE CAP IN THIS LOCATION AND MARK EACH CAP ON THE EAST SIDE OF THE LINE WITH BLACK LETTERS, MINIMUM 3 INCHES HIGH, "DEMOLITION LINE-DO NOT REMOVE".

NOT TO BE USED
FOR CONSTRUCTION

THE DISTRIBUTION AND USE OF THE NATIVE FORMAT CAD FILE OF THIS DRAWING IS UNCONTROLLED. THE USER SHALL VERIFY TRACEABILITY OF THIS DRAWING TO THE LATEST CONTROLLED VERSION.

BLACK & VEATCH
12240 Glen Bay Parkway West
Suite 210
Overland Park, Kansas 66209
A Division of AUTHORITY

JEA
ST. JOHNS RIVER POWER PARK
INTAKE STRUCTURE ISOLATION

PROJECT NUMBER: 198821-CHRC-S3701
DRAWING NUMBER: 0
REV: 0
CODE: REFERENCE DWG NUMBER:
AREA:

ENGINEER: PAB DRAWN: DAS
CHECKED: DATE: