



Building Community®

Procurement Bid Office
Customer Center 1st Floor, Room 002
21 W. Church Street
Jacksonville, Florida 32202

April 9, 2018

ADDENDUM NUMBER: Two (2)

TITLE: Northside Generating Station Phase 1 Corrective Measures Implementation

JEA ITM NUMBER: 078-18

RESPONSE DUE DATE: April 17, 2018

TIME OF RECEIPT: 12:00 PM

TIME OF OPENING: 2:00 PM

**THIS ADDENDUM IS FOR THE PURPOSE OF MAKING THE FOLLOWING
CHANGES OR CLARIFICATIONS:**

REPLACE BID SCHEDULE; DIVISION 01 22 00 MEASUREMENT AND PAYMENT (PAGES 15 AND 16 OF 73); AND DRAWING SHEET C-103 YARD PIPING. THREE (3) BID ITEMS (018, 019 AND 020) HAVE BEEN ADDED. REFER TO ATTACHED MEMORANDUM FOR NARRATIVE DESCRIPTION.

Memorandum

Date: 9 April 2018
To: Jaclyn Vu, JEA
Matt McClure, JEA

From: Rachel Klinger, Geosyntec
Subject: Bid Addendum Number 2
JEA Northside Generating Station
Geosyntec Project: FR2358C

PURPOSE

The purpose of this memorandum is to provide details for the Addendum Number 2 for the JEA Northside Generation Station (NGS) Phase 1 Corrective Measures Implementation project located at 4377 Heckscher Drive in Jacksonville, Duval County, Florida (the “Site”). Three Bid Items have been added to the scope of work.

BID ITEM 018 - Installation of Electrical and CWTS Reuse Piping

This bid item is for the furnishing and installation of approximately 700-linear feet of HDPE pipe as shown on the revised drawing sheet C-103. The HDPE pipe shall be DR-11 and 6-inches in diameter. Reference specifications Division 31 23 33 - Trenching and Division 40 – Process Piping, Hosing and Appurtenances for installation, testing and completion requirements. In addition, two electrical conduits will be installed parallel to this HDPE pipe. The electrical conduits will be 2-inches in diameter, Schedule 40 PVC (1,400-linear feet total). This pipe and conduits will be installed in the same trench as the HDPE pipe to be installed for Bid Item 008. Spacing of the pipe and conduit will be in general accordance with the Details shown on Drawing Sheet C-109. The fittings/details for this include:

- a. Two 6-inch HDPE DR-11 Tees with isolation valves at the end of the two 50-foot sections;
- b. Two 6-inch HDPE DR-11 Tees with isolation valves at the connections to the CWTS;
- c. One 6-inch HDPE DR-11 Tee with isolation valve at the connection to the northern 50-foot section;

- d. Two polymer with polymer concrete lid & ring, 13" x 24" x 18" deep electrical pull boxes at each end of the conduit run;
- e. One polymer with polymer concrete lid & ring, 13" x 24" x 18" deep electrical pull box near the midpoint of the conduit run; and
- f. Miscellaneous angled/elbowed connectors for both 2-inch conduit and 6-inch HDPE pipe.

BID ITEM 019 - Supplemental Work Authorization (SWA) Allowance

This bid item is for contingencies that may be identified during the execution of this project. The budget is set for \$70,000.00. Each Supplemental Work Authorization will have a pre-approved scope and budget that will be applied toward this Allowance Budget. None of this bid item is guaranteed to be spent for this project.

BID ITEM 020 - Flagman for Work Near Railroad Tracks (CSX Transportation, Inc.)

This bid item is for the cost of having a CSX Flagman present during work near the CSX railroad tracks. This is expected to be charged on a daily rate basis, not-to-exceed five (5) work days. If fewer than five days are needed, then payment will be for the actual number of days the CSX Flagman was present.



**NGS Phase 1 Corrective
Measure Design
Implementation**
TECHNICAL SPECIFICATIONS

DIVISION 01

Project: FR2358C
Revision: 01
Date: April 2018
Page 15 of 74

- a. The Unit Rate Price for this item shall be paid based on the CONTRACTOR'S progress and completion of the Work to the satisfaction of the JEA ENGINEER.
- 2. Measurement
 - a. The Work required for this item will be measured on the basis of satisfactory evidence of the CONTRACTOR completing all final punch list items and final submittal of all documentation and sampling results.
- Z. Bid Item 018 – Installation of CWTS Reuse Piping and Electrical Conduits
 - 1. Payment
 - a. One Lump Sum payment will be made upon completion to compensate CONTRACTOR in full for costs associated with all equipment, labor, materials, and procuring permits related to the excavation and installation of all electrical conduits and piping from the CWTS to the hydraulic control system including the tie-in connections. Work includes transport and placement of bedding sand from an off-site source obtained by the CONTRACTOR as shown on the Construction Drawings. The off-site fill source and material must be approved by the JEA and the JEA ENGINEER prior to its use on-site.
 - 2. Unit of Measure
 - a. The Work required for this bid item will not be measured.
- AA. Bid Item 019 – Supplemental Work Authorization (SWA) Allowance
 - 1. Payment
 - a. SWAs may be authorized to address contingencies. Payment will be made upon completion to compensate CONTRACTOR in full for costs associated with all equipment, labor and materials for the execution of the scope of work and cost pre-approved by the JEA and the JEA ENGINEER. Payment may be either Lump Sum or Cost Reimbursable.
 - 2. Unit of Measure
 - a. The Work required for this bid item will be measured in accordance with the pre-approved scope of work for each SWA.
- BB. Bid Item 020 – Flagman for Work Near Railroad Tracks
 - 1. Payment



**NGS Phase 1 Corrective
Measure Design
Implementation**
TECHNICAL SPECIFICATIONS

DIVISION 01

Project: FR2358C
Revision: 01
Date: April 2018
Page 16 of 74

- a. Payment will be made upon completion to compensate CONTRACTOR in full for costs associated with all equipment, labor and materials for subcontracting an authorized CSX Flagman for work done near their railroad tracks.

2. Unit of Measure

- a. The Work will be measured on a per day basis.

1.04 Cited Standards - Not Used

1.05 Noted Restrictions - Not Used

1.06 Safety - Not Used

1.07 Quality Control - Not Used

1.08 Submittals

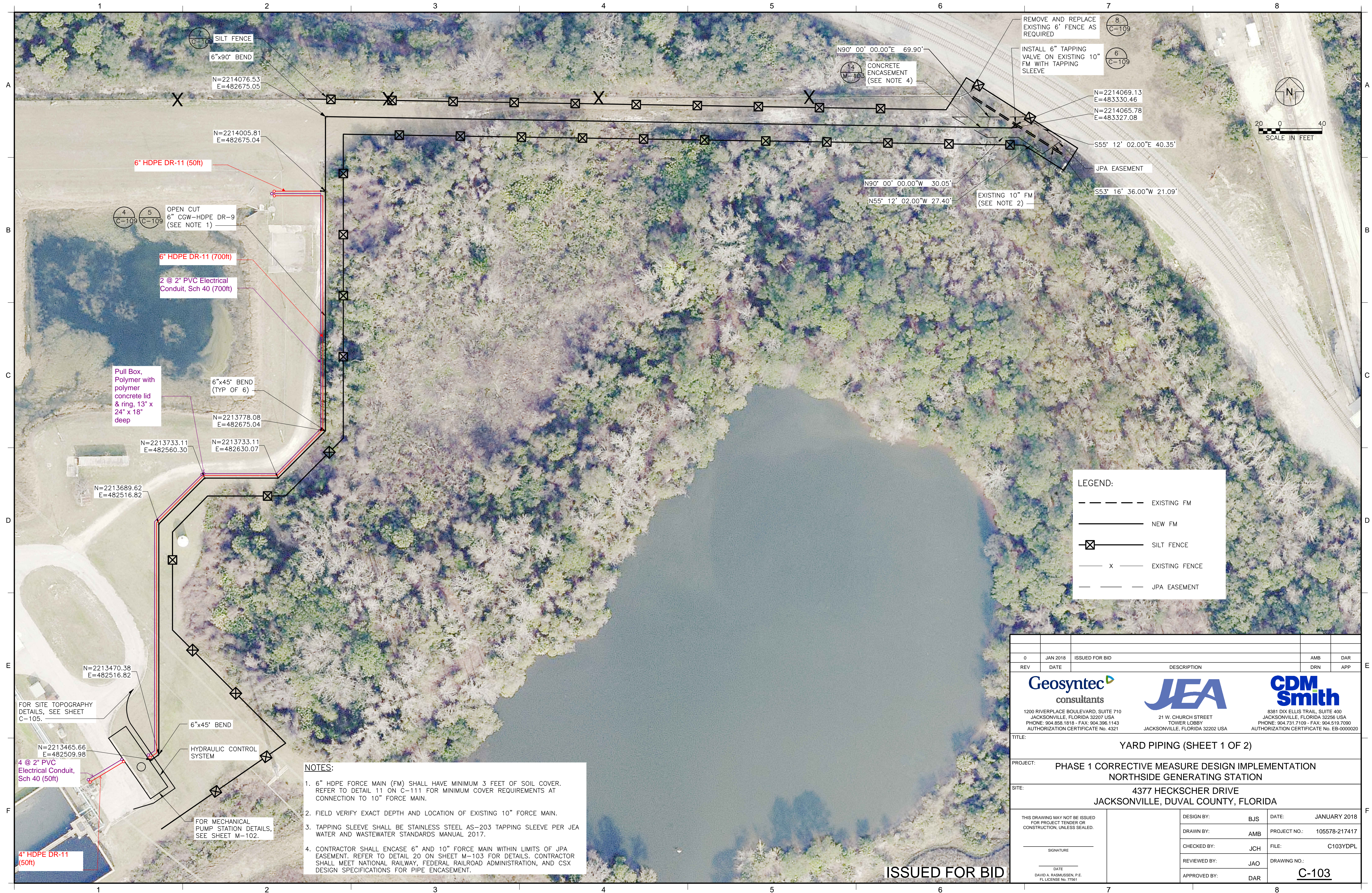
- A. Submittal of invoices shall comply with JEA Contract Documents.

Part 2 Products – not used

Part 3 Execution – not used

END OF SECTION

XREFs: [Title Block-FR2356A-C2, GEOSYNTEC-PAD, CWP000YF] Images: [OP2013_NC_117263_24]
Last saved by: EDWARDSAF Time: 9/26/2017 2:06:25 PM
pw:\pw\cdsmith.com\PW_PL\1105578\11474104 Design Services NM_100%02 Civil10 CADD\C103YDPL.dwg



0	JAN 2018	ISSUED FOR BID		AMB	DAR
REV	DATE	DESCRIPTION		DRN	APP
<div><div><div>Geosyntec consultants</div><div>1200 RIVERPLACE BOULEVARD, SUITE 710 JACKSONVILLE, FLORIDA 32207 USA PHONE: 904.858.1818 - FAX: 904.396.1143 AUTHORIZATION CERTIFICATE No. 4321</div></div><div><div>JEA</div><div>21 W. CHURCH STREET TOWER LOBBY JACKSONVILLE, FLORIDA 32202 USA</div></div><div><div>CDM Smith</div><div>8381 DIX ELLIS TRAIL, SUITE 400 JACKSONVILLE, FLORIDA 32256 USA PHONE: 904.731.7109 - FAX: 904.519.7090 AUTHORIZATION CERTIFICATE No. EB-0000020</div></div></div>					
TITLE: YARD PIPING (SHEET 1 OF 2)					
PROJECT: PHASE 1 CORRECTIVE MEASURE DESIGN IMPLEMENTATION NORTHSIDE GENERATING STATION					
SITE: 4377 HECKSCHER DRIVE JACKSONVILLE, DUVAL COUNTY, FLORIDA					
THIS DRAWING MAY NOT BE ISSUED FOR PROJECT TENDER OR CONSTRUCTION, UNLESS SEALED. _____ SIGNATURE _____ DATE DAVID A. RASMUSSEN, P.E. FL LICENSE No. 77561		DESIGN BY:	BJS	DATE:	JANUARY 2018
		DRAWN BY:	AMB	PROJECT NO.:	105578-217417
		CHECKED BY:	JCH	FILE:	C103YDPL
		REVIEWED BY:	JAO	DRAWING NO.:	C-103
		APPROVED BY:	DAR		

078-18 Appendix B - Bid Workbook - **Addendum 2**
Northside Generating Station - Phase 1 Corrective Measures Implementation

No.	Item	Quantity	Unit ¹	Unit Rate	Total
1	Mobilization/Demobilization	1	Lump Sum	\$	\$
2	Private Utility Locate	1	Lump Sum	\$	\$
3	Installation of Temporary Erosion Controls	1	Lump Sum	\$	\$
004a	Installation of Cap – Clearing and Grubbing	1	Lump Sum	\$	\$
004b	Installation of Cap – Grading Subbase	200	Bank Cubic Yard	\$	\$
004c	Installation of Cap – Subgrade and Final Fill (Protective Cover Soil)	6,800	Bank Cubic Yard	\$	\$
004d	Installation of Cap – Final Grade Fill (Top Soil)	2,750	Bank Cubic Yard	\$	\$
004e	Installation of Cap – Erosion Control Mat and Seeding	1	Lump Sum	\$	\$
004f	Installation of General Fill	500	Bank Cubic Yards	\$	\$
004g	Sodding	1	Lump Sum	\$	\$
5	Installation of Access Road	1	Lump Sum	\$	\$
6	Installation of Temporary Power	1	Lump Sum	\$	\$
007a	Installation of Extraction Wells and Above Ground Enclosure	1	Lump Sum	\$	\$
007b	Installation of Monitoring Wells and Piezometers	1	Lump Sum	\$	\$
8	Installation of Electrical and Hydraulic Transmission Piping	1	Lump Sum	\$	\$
009a	Disposal of Contaminated Soil ² (T&D)	10	Ton	\$	\$
009b	Disposal of Contaminated ² Liquids (T&D)	20	Drum	\$	\$
009c	Disposal of Contaminated Directional Drilling Mud (T&D)	3,000	Gallon	\$	\$
10	Installation of Concrete Pad	1	Lump Sum	\$	\$
11	Installation of Hydraulic Control System Shed, Pumps, Wiring, Instrumentation, and Controls	1	Lump Sum	\$	\$
12	Hydraulic Control System Startup Testing	1	Lump Sum	\$	\$
13	Installation of Pump Station	1	Lump Sum	\$	\$
14	Equalization Tank	1	Lump Sum	\$	\$
15	Installation of Chain Link Fence	1	Lump Sum	\$	\$
16	Site Restoration	1	Lump Sum	\$	\$
17	Close Out Documentation	1	Lump Sum	\$	\$
18	Installation of Electrical and CWTS Reuse Piping	1	Lump Sum	\$	\$
19	Supplemental Work Authorization (SWA) Allowance ³	70,000	Dollar	\$1.00	\$70,000.00
20	Flagman for Work Near Railroad Tracks (CSX Transportation, Inc.)	5	Day	\$	\$
Total					70000

Notes:

- 1- All quantities provided are estimates, bidders should complete their own individual quantity take-offs and note any discrepancies.
- 2- For bidding purposes, Bidder should assume all material is non-hazardous.
- 3- The amount indicated for the Supplemental Work Authorization (SWA) Allowance is set at \$70,000.00 for all Bidders.
Some or none of this amount may be used during the project for contingencies on an as-needed basis.