

**ADDENDUM NO. 4**  
**(November 23, 2020)**

**HOLIDAY ROAD MASTER PUMP STATION SPLITTER BOX REPLACEMENT**

**JEA**

**MITTAUER & ASSOCIATES, INC. PROJECT NO. 0801-40-2**

---

**TECHNICAL SPECIFICATIONS:**

**SPECIFICATION SECTION 15200 - BYPASS PUMPING SYSTEMS:**

Modify the Section 1.01 as follows:

“Bypass Sequence ‘A’: Force main head condition 30 to 40 psig (TDH) at 1,000 to 2,000 gpm from current dry-pit pumps. 3,000 gpm and greater head conditions have force main pressures that ~~exceed~~ **range between 50 to 60** psig. During this sequence, the Contractor shall pump to the existing 18” force main utilizing Pump Connection No. 1 and No. 2 as shown on the Drawings. Pump Connection No. 1 shall be modified prior to bypass activities, and Pump Connection No. 2 shall be constructed prior to bypass activities.”

Modify the Section 1.03(C)(2) as follows:

“The Contractor shall provide for continuous transmission of wastewater by providing a temporary bypass pumping system. The Contractor shall have adequate standby equipment available and ready for immediate operation and use in the event of an emergency or breakdown. The Contractor shall indicate in their submittal sufficient firm capacity to meet the peak hourly flow demands with one pump out of service. A minimum of ~~three~~ **two** pumps will be required for service, with design approach to keep one pump in lag condition at all times. If actual operations require service of all mobilized pumps, then the Contractor shall modify and replace pump selections or add an additional standby pump.”

**DRAWINGS:**

**DRAWING E-4 - TOP FLOOR ELECTRICAL PLAN:**

Revise the LIGHTING FIXTURE SCHEDULE as follows:

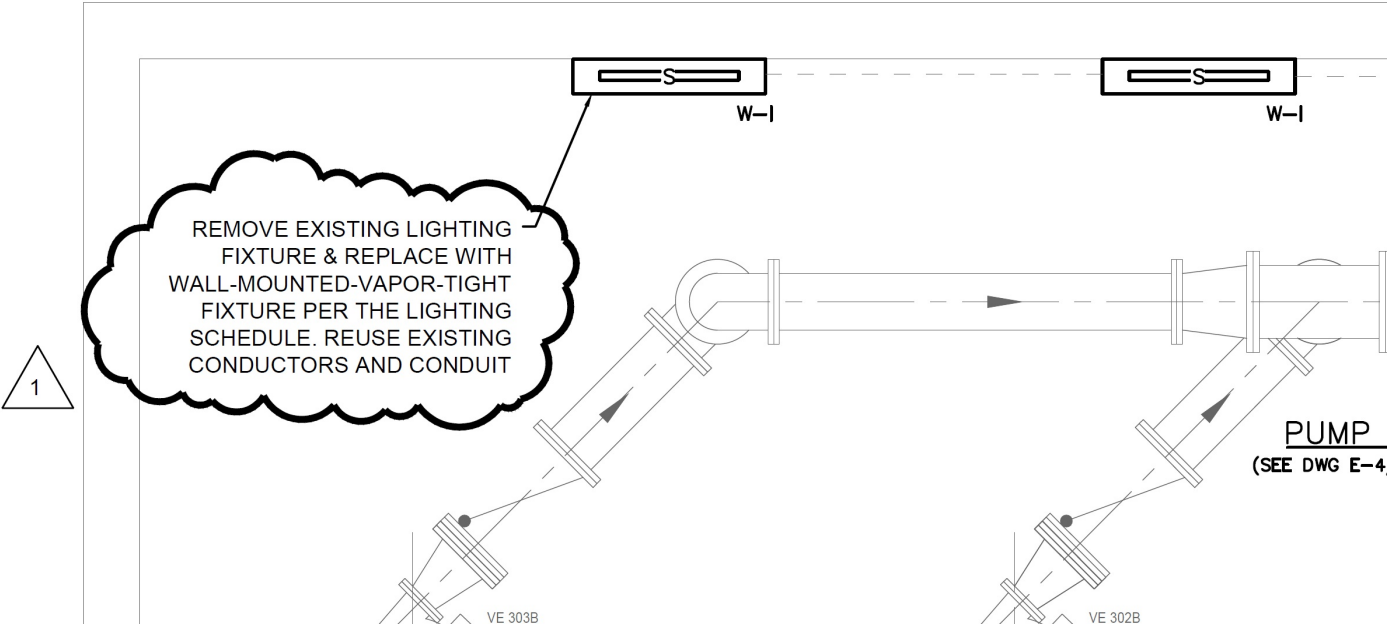
LIGHTING FIXTURE SCHEDULE					
TYPE	MANUFACTURER & CATALOG NUMBER	VOLTS	WATTS	MOUNTING	REMARKS
A	LITHONIA FEM-L48-10,000 LUM-IMAFL-WD-MVOLT-GZ10-40K-80 CRI	120		SUSPENDED	FURNISH BRACKET TO REUSE EXISTING TRAPEZE HANGERS
B	LITHONIA JCBL (18,000 LUM/4,000K/80 CRI)	120		SUSPENDED	PENDANT MOUNT/REUSE EXISTING
B-C	RED SKY BLK - 100-100-272-4000 K-120-HI-CLR-GREY-PEND	120	100	SUSPENDED	CLASS I/DIV I
W-E	LITHONIA TWH-LED 20C - 50K	120	72	WALL MOUNT	CRI 70+. PROVIDE 3-POSITION SWITCH WITH PHOTOCELL TO OPERATE LIGHTS IN AUTO POSITION
W-I	LITHONIA FEM-L48-10,000 LUM-IMAFL-WD-MVOLT-GZ10-40K-80 CRI	120		WALL MOUNT	WET LOCATION FITTING
W-C	RED SKY LNT - 80-100-277-4000 K-110-CLR-GREY-YOKE	120	80	WALL MOUNT	CLASS I/DIV 1

1

PROVIDE 3-POSITION SWITCH IN AUTO

**DRAWING E-6 - BOTTOM ELECTRICAL PLAN:**

Modify the following call out:



**END OF ADDENDUM NO. 4**