

Consolidated Rivertown Water Treatment Plant (WTP) Project Package

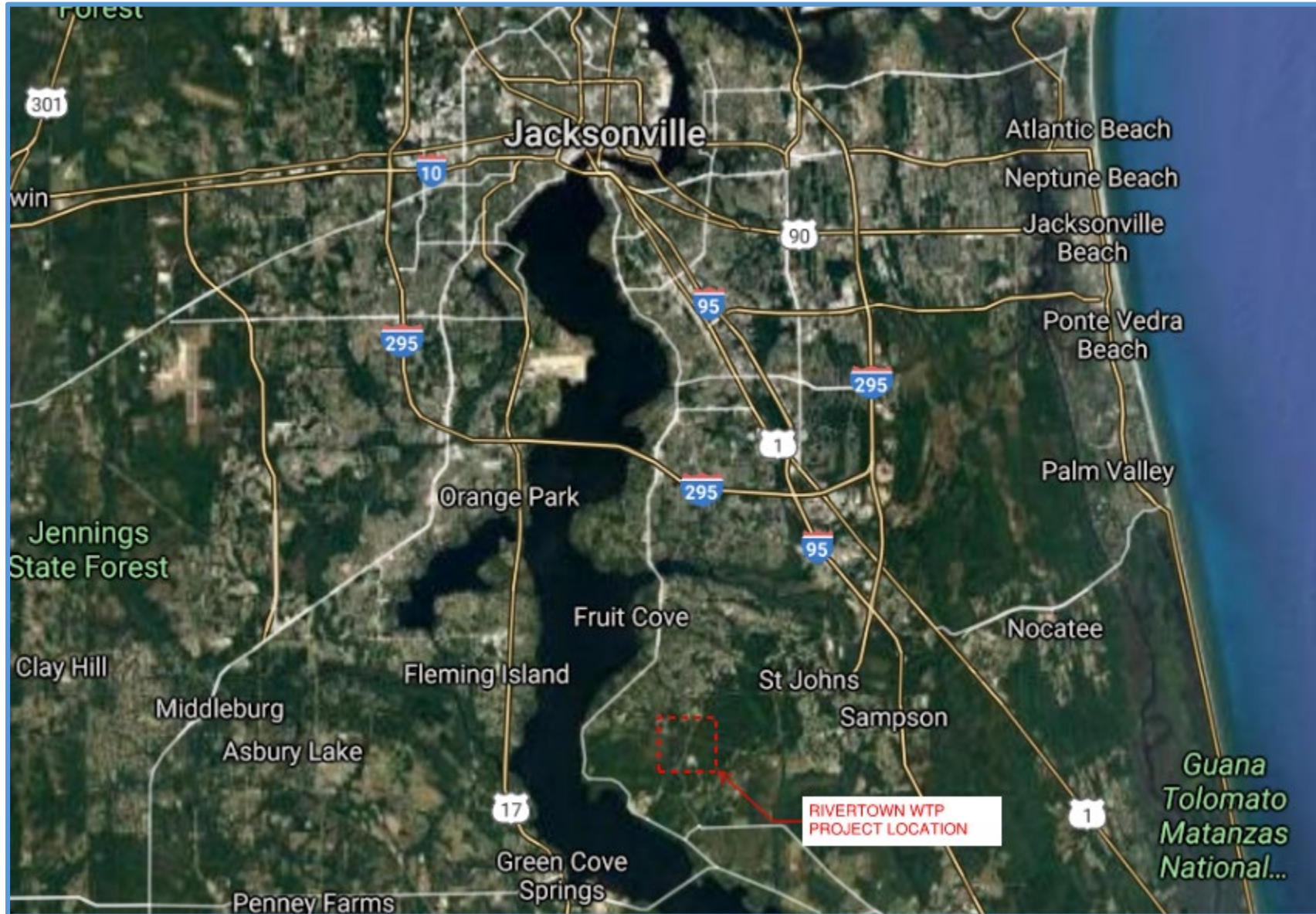
4/28/21

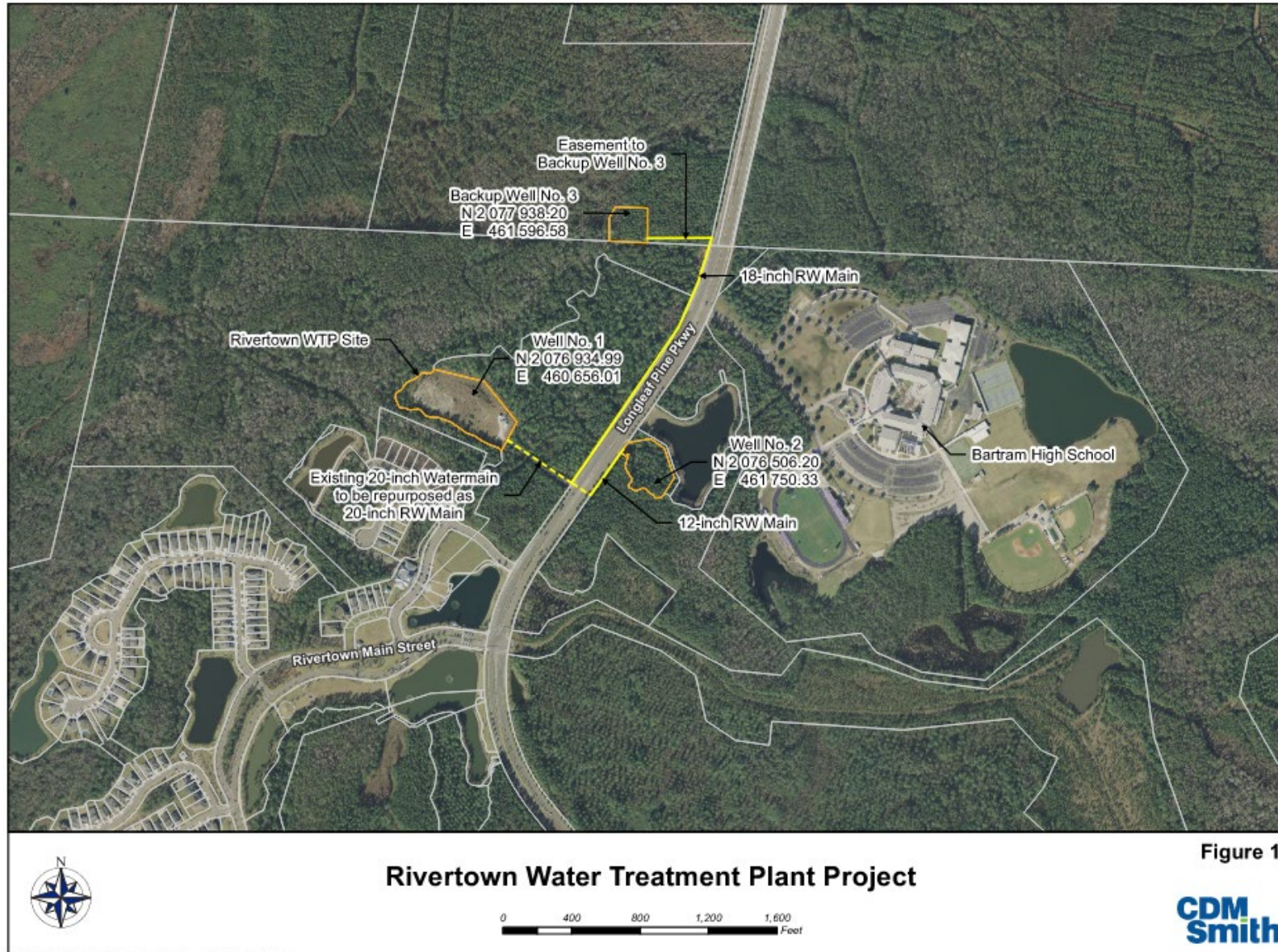


Rivertown WTP Project Purpose and Location

- The Project is being implemented to provide and distribute additional potable water in JEA's service area in northwest St Johns County.
- The Rivertown WTP site and Well No. 1 Site are located at 7612 Longleaf Pine Parkway, St. Johns County, Florida.
- Well No. 2 and 3 sites are located east and north of the WTP site (see following slides).

Rivertown WTP Project Vicinity





Rivertown WTP Project (continued)

- Owner: JEA
- Lead Engineering Consultant for the Project: CDM Smith Inc
- Engineering Consultant for Wells: Jacobs Engineering Group Inc
- Engineering Consultant for Pipeline: 4 Waters Engineering Inc

Rivertown WTP Project (continued)

- The Rivertown WTP Project was developed in 2 packages (e.g., drawings, specifications, bid workbooks, schedules, etc.):
 - Part 1 Package: Well Nos. 1, 2, and Backup Well No. 3, Production Well Drilling, for the Rivertown WTP.
 - Part 2 Package: Rivertown Water Treatment Plant, Wellhead Mechanical and Facilities, and Raw Water Pipelines.
- Due to unexpected delays, both packages are being consolidated into one (1) Invitation for Bids and one (1) construction contract for implementation.

Rivertown WTP Project (continued)

- The consolidation of both packages (e.g., Part 1 Package and Part 2 Package) is described in the document: *Consolidation of Part 1: Well Nos. 1, 2, and Backup Well No. 3, Production Well Drilling, for the Rivertown Water Treatment Plant, and Part 2: Rivertown Water Treatment Plant, Wellhead Mechanical and Facilities, and Raw Water Piping*
- The Contractor shall plan, coordinate, integrate, and perform all work in the Consolidated Rivertown WTP Project Package, which includes the Part 1 Package and the Part 2 Package.

Part 1 Package: Well Nos. 1, 2, and Backup Well No. 3, Production Well Drilling

4/28/21

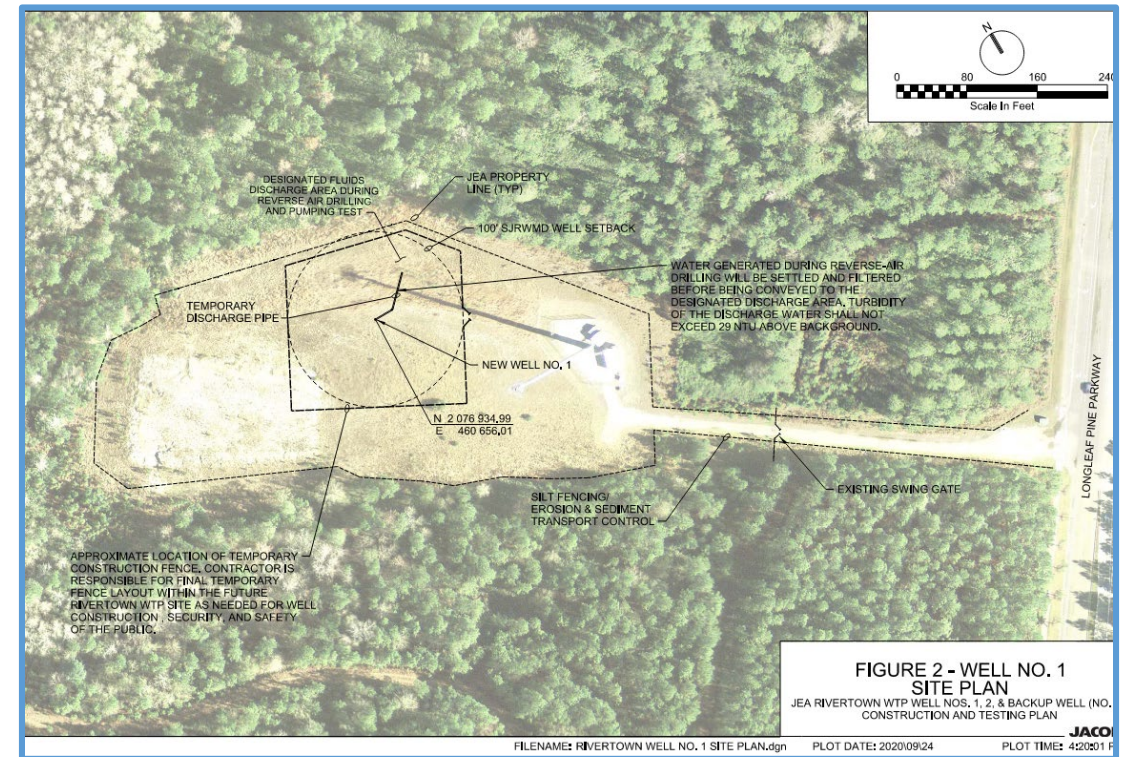


Scope for Part 1 Package

The work includes, but is not limited to:

- Permitting, mobilization, and demobilization.
- Production Well 1:
 - preparing Well 1 site including clearing as needed;
 - installing temporary security fence;
 - installation sediment and erosion control measures;
 - overexcavating unsuitable materials;
 - providing and installing backfill;
 - drilling, constructing, developing, testing, logging/documenting the well, and disinfecting the well;
 - fluid management; and
 - restoration and stabilization.

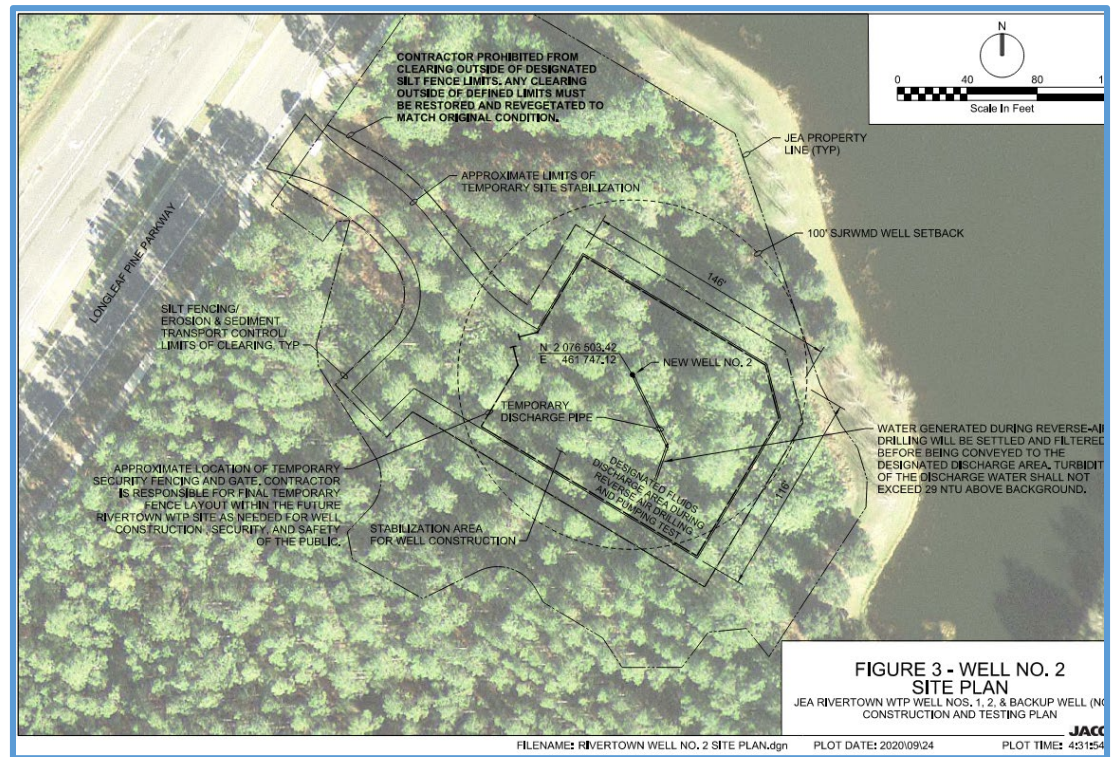
Note 1: See the project specifications and drawings for detailed discussion and description of project scope and requirements.



Scope for Part 1 Package (continued)

- Production Well 2:
 - preparing site and access road including clearing and grubbing;
 - installation of temporary security fence;
 - installation of sediment and control measures;
 - overexcavating unsuitable materials;
 - providing and installing fill;
 - drilling, constructing, developing, testing, logging/documenting the well, and disinfecting the well;
 - fluid management; and
 - restoration and stabilization.

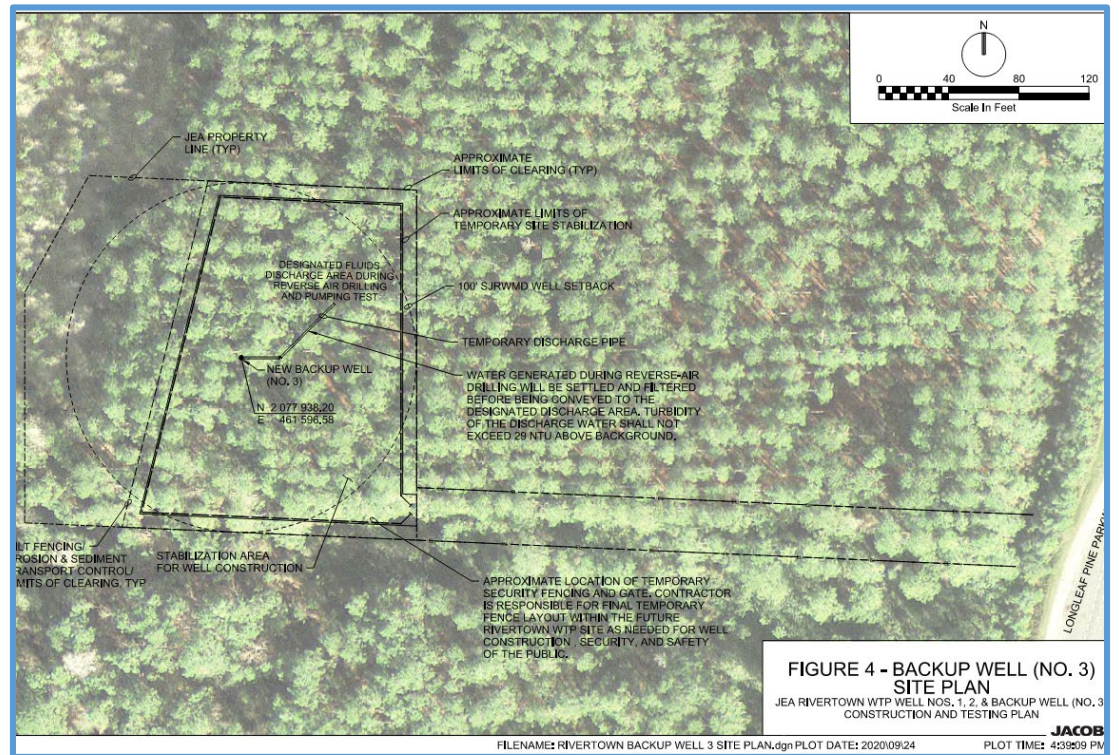
Note 1: See the project specifications and drawings for detailed discussion and description of project scope and requirements.



Scope for Part 1 Package (continued)

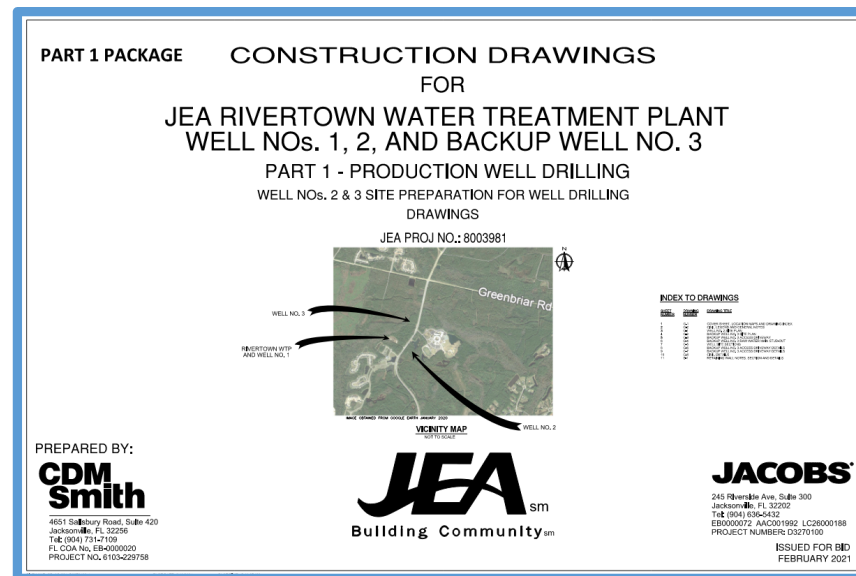
- Backup Well 3 (Alternate Bid Item):
 - preparing site and access road including clearing and grubbing;
 - installation of temporary security fence;
 - installation of sediment and control measures;
 - providing and installing fill;
 - constructing the access road including installation of sheetpile retaining wall, section of raw water pipe, and replacing curb and sidewalk;
 - drilling, constructing, developing, testing, logging/documenting the well, and disinfecting the well;
 - fluid management; and
 - restoration and stabilization.

Note 1: See the project specifications and drawings for detailed discussion and description of project scope and requirements.



Technical Documents

- *Technical Specifications*, including:
 - Geotechnical Exploration and Evaluation Report
 - Test Holes Report
 - Preliminary Wetlands and Listed Species Report
- *Construction Drawings*



Part 1 Package



Part 2 Package: Rivertown Water Treatment Plant (WTP), Wellhead Mechanical and Facilities, and Raw Water Pipelines

4/28/21

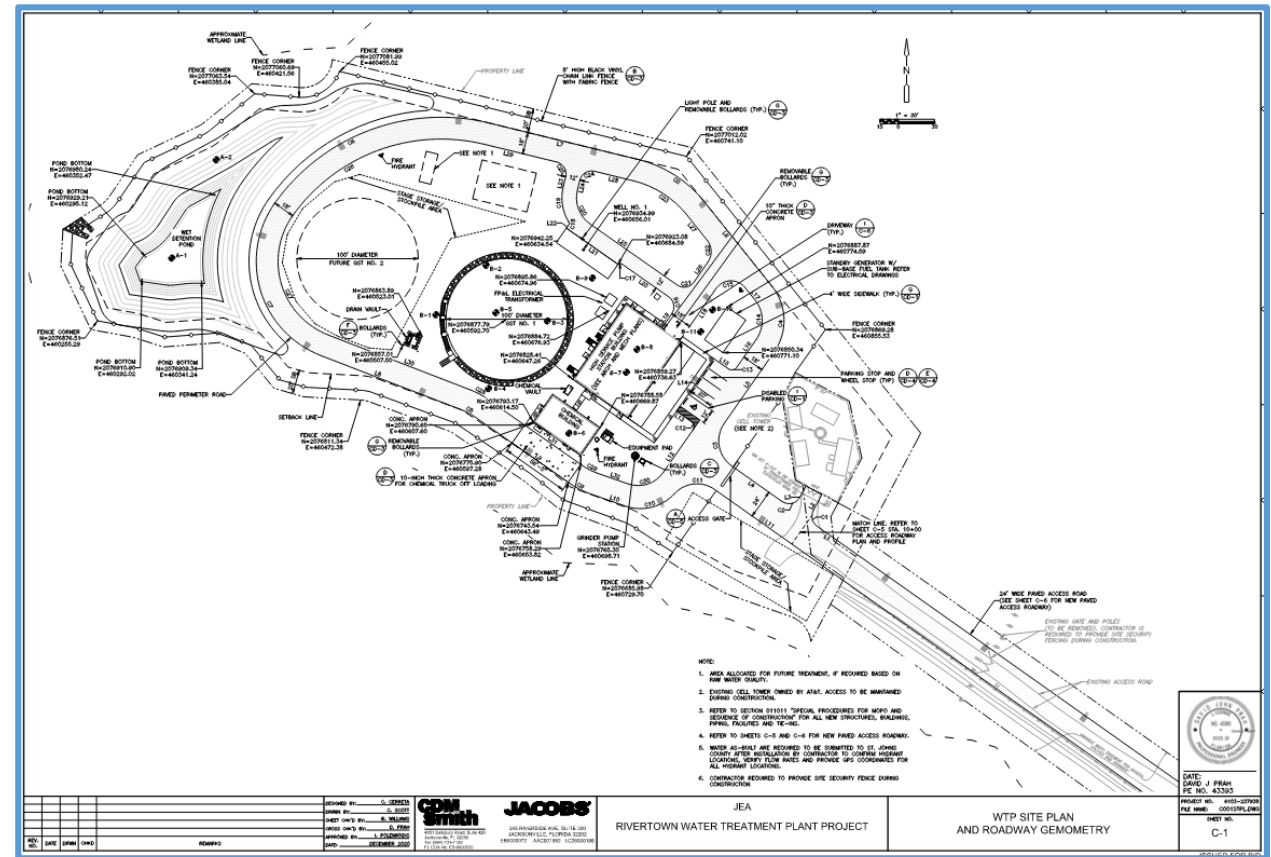


Scope – Part 2 Package

Note: See the project specifications and drawings for detailed discussion and description of project scope and requirements

• Water Treatment Plant:

- Site work including landscaping
- Sanitary sewage (either pump station with force main or gravity sewer—alternate bid items).
- WTP loop roadway
- High Service Pump System & Building
- 2.0 MG Ground Storage Tank
- Sodium Hypochlorite System & Building
- Emergency generator
- 20-inch finished water line connection to existing finished water main
- Over-excavation, dewatering, & importing structural fill
- Stormwater system
- Piping (raw water and finished water), valves, flow meters, & associated components

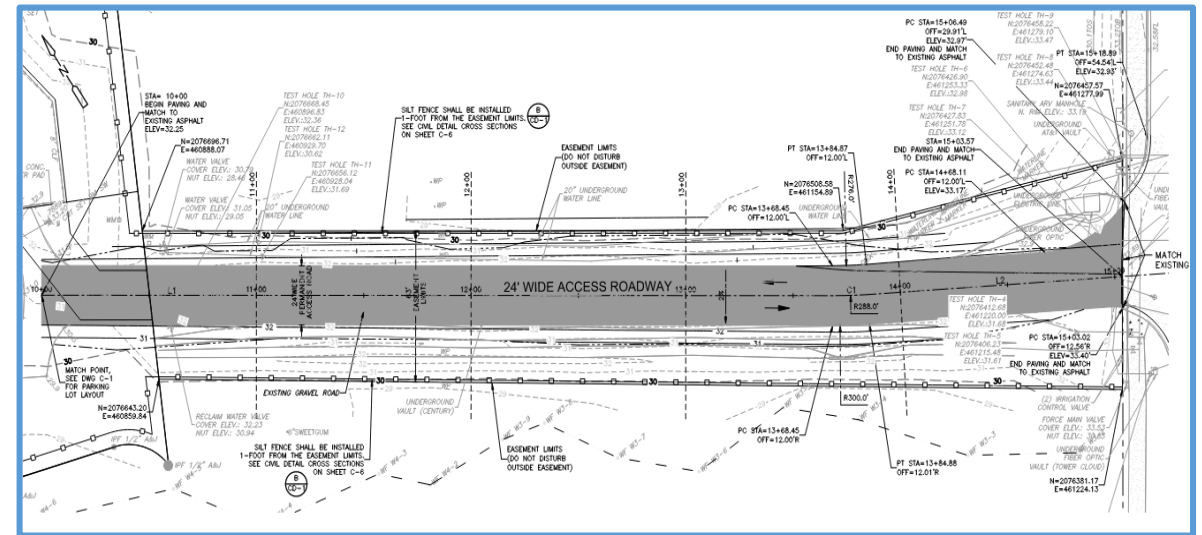


Scope – Part 2 Package (continued)

Note: See the project specifications and drawings for detailed discussion and description of project scope and requirements

• Water Treatment Plant (cont'd):

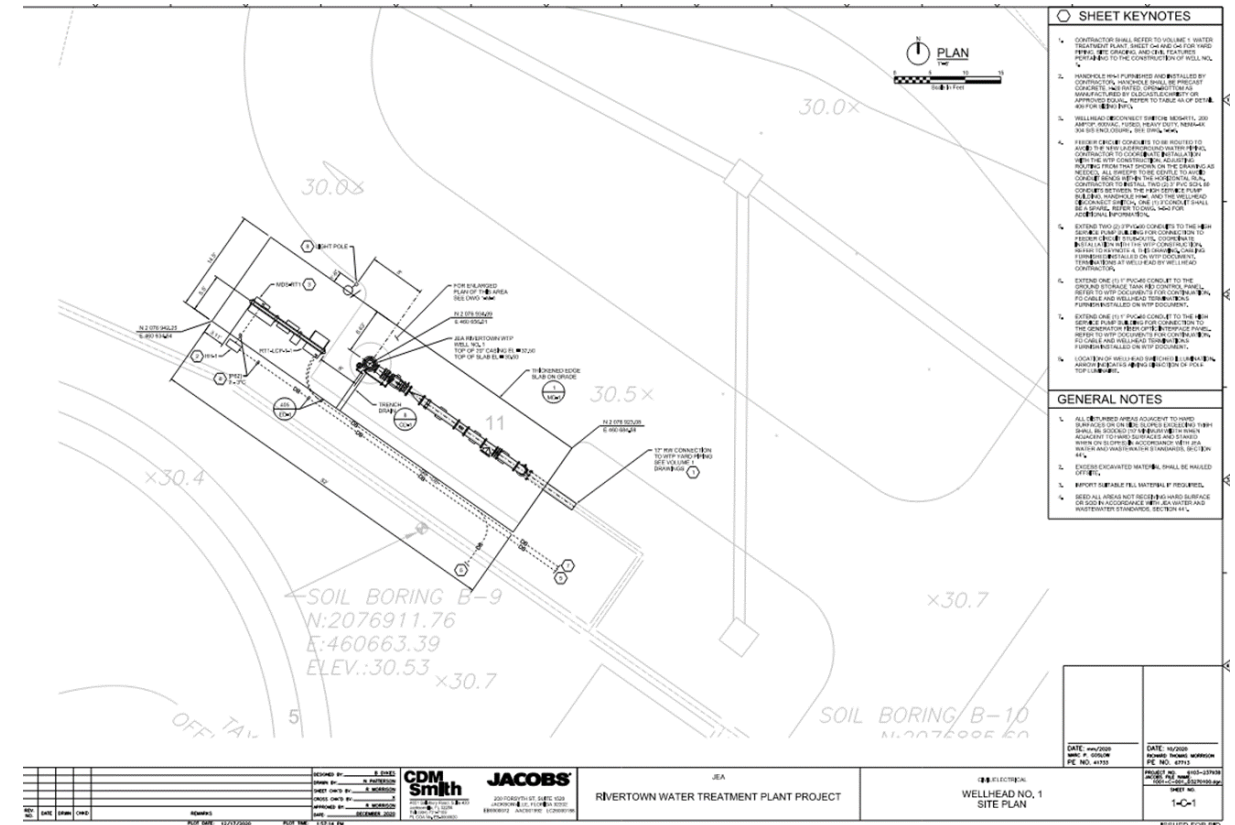
- Access Road (alternate bid item)
- Electrical system
- FP&L electrical infrastructure
- Instrumentation & Controls including SCADA
- Provision & installation of certain security features and coordination with JEA Security including:
 - Temporary security fence
 - Permanent security fence
- Removal and proper disposal of wastes & unsuitable materials/soils



Scope – Part 2 Package (continued)

Note: See the project specifications and drawings for detailed discussion and description of project scope and requirements

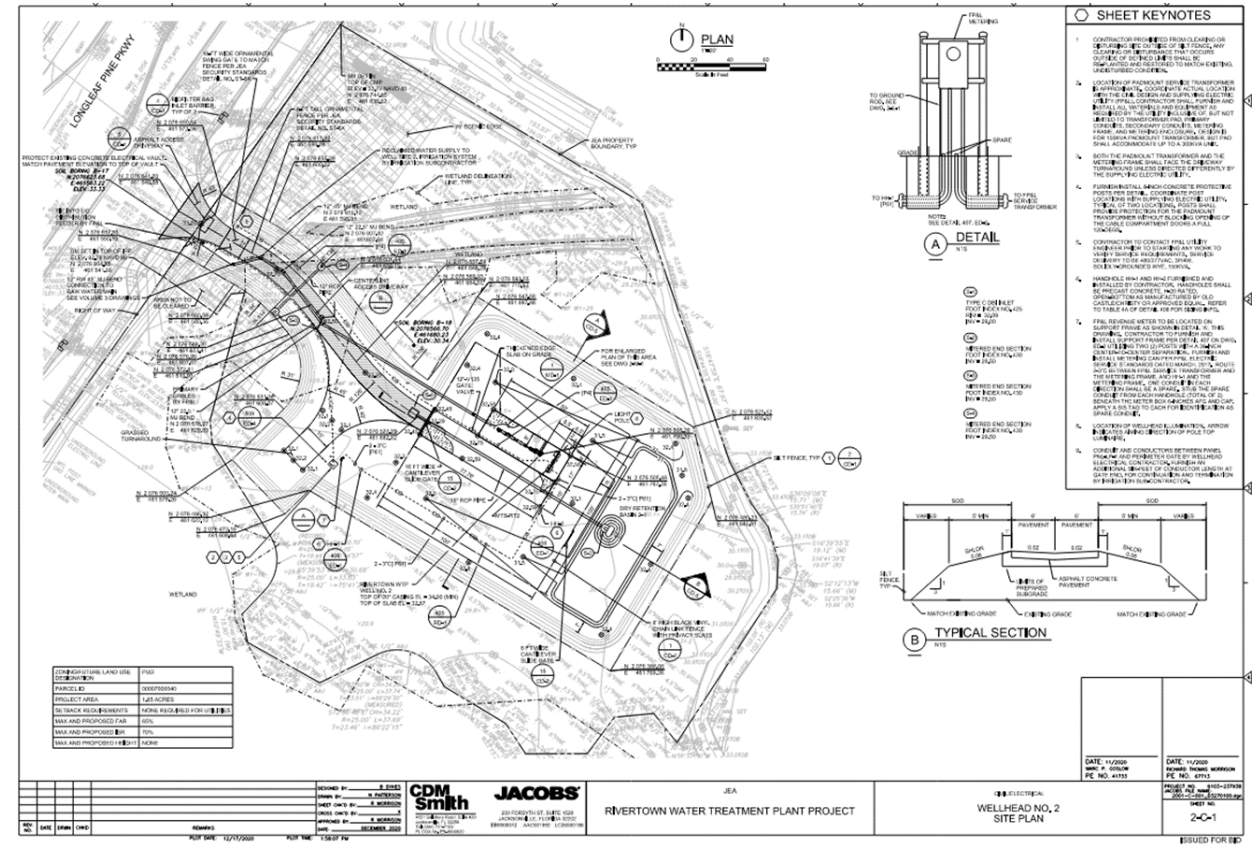
- Well No. 1 (located on WTP site):
 - Site work
 - Well pump
 - Well pad
 - Wellhead piping, valves, flow meters, underground piping, and associated components
 - Electrical system
 - Instrumentation and controls
 - Fiber optic communication
 - Over-excavation, dewatering, & importing structural fill
 - Removal and proper disposal of wastes & unsuitable materials/soils



Scope – Part 2 Package (continued)

Note: See the project specifications and drawings for detailed discussion and description of project scope and requirements

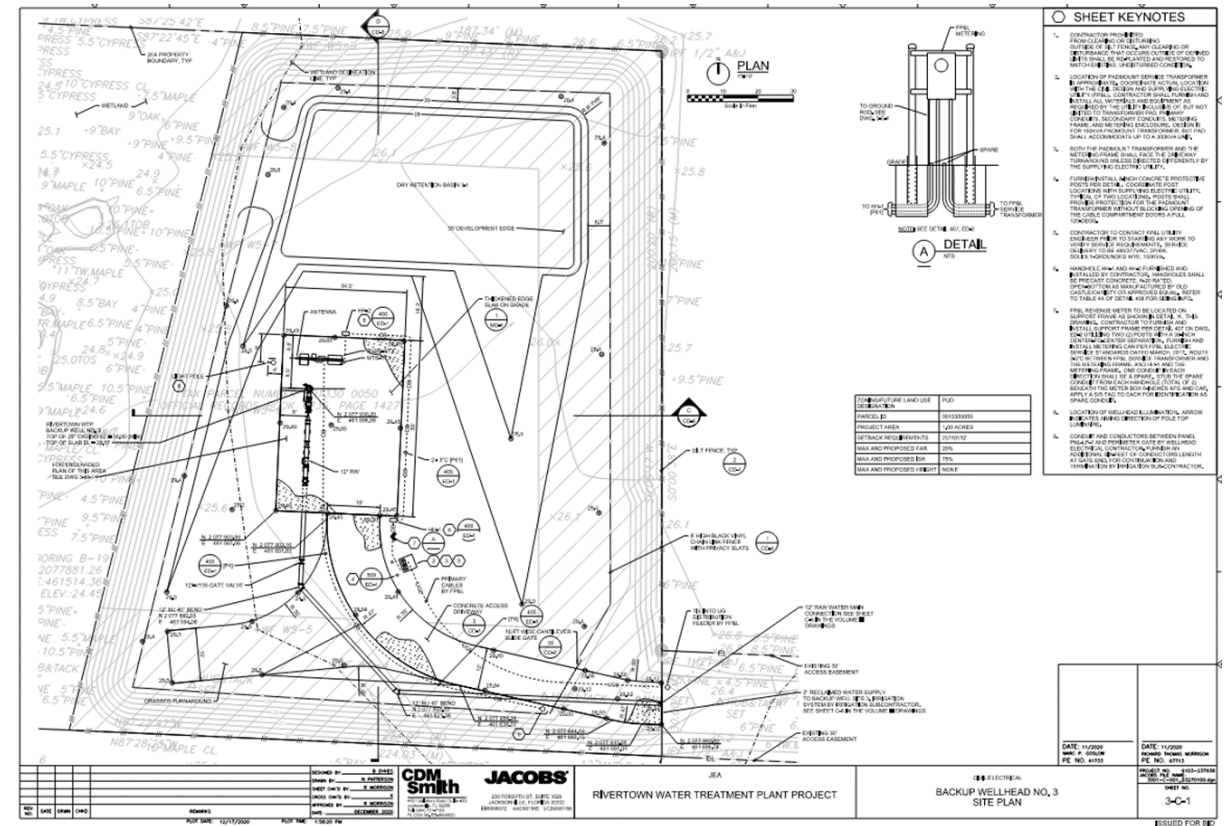
- Well No. 2 & Access Road:
 - Well pump
 - Well pad
 - Wellhead piping, valves, flow meters, and associated components
 - Underground piping (note interface of lump sum bid item versus unit price bid item)
 - Site work
 - Access road
 - Landscaping
 - Stormwater features
 - Lighting
 - Fencing
 - Electrical system
 - FP&L electrical infrastructure
 - Instrumentation and controls
 - Radio communication
 - Over-excavation, dewatering, & importing structural fill
 - Removal and proper disposal of wastes & unsuitable materials/soils



Scope – Part 2 Package (continued)

Note: See the project specifications and drawings for detailed discussion and description of project scope and requirements

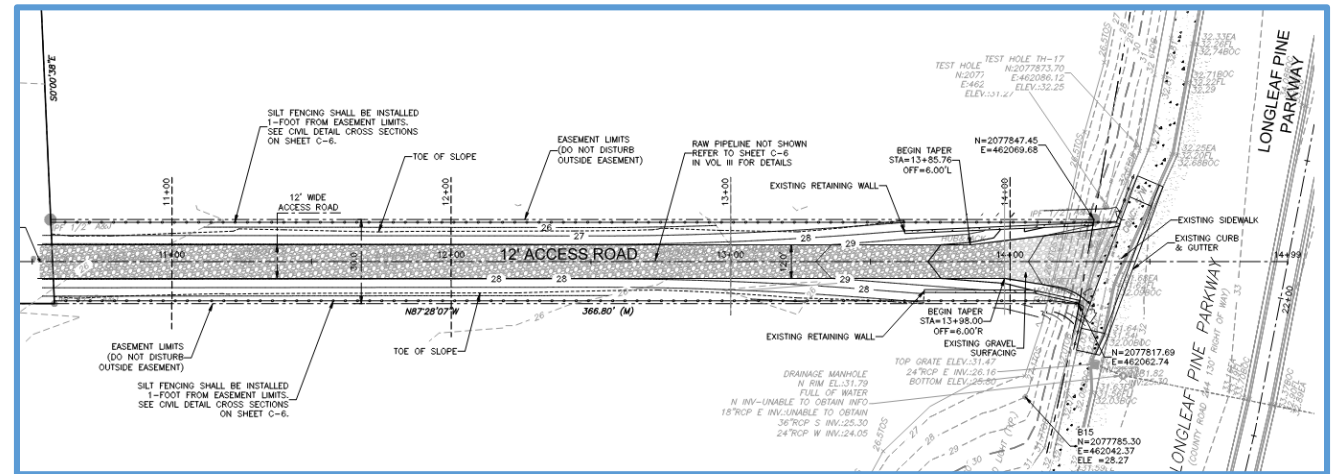
- Well No. 3 & Access Road, Alternate Bid Items :
 - Well pump
 - Well pad
 - Wellhead piping, valves, flow meters, and associated components
 - Underground piping (note interface of lump sum bid item versus unit price bid item)
 - Site work
 - Landscaping
 - Stormwater features
 - Lighting
 - Fencing
 - Electrical system
 - Instrumentation and controls
 - Radio communication



Scope – Part 2 Package (continued)

Note: See the project specifications and drawings for detailed discussion and description of project scope and requirements

- Well No. 3 & Access Road, Alternate Bid Items (cont'd) :
 - Access road
 - FP&L electrical infrastructure
 - Over-excavation, dewatering, & importing structural fill
 - Removal and proper disposal of wastes & unsuitable materials/soils



Scope – Part 2 Package (continued)

Note: See the project specifications and drawings for detailed discussion and description of project scope and requirements

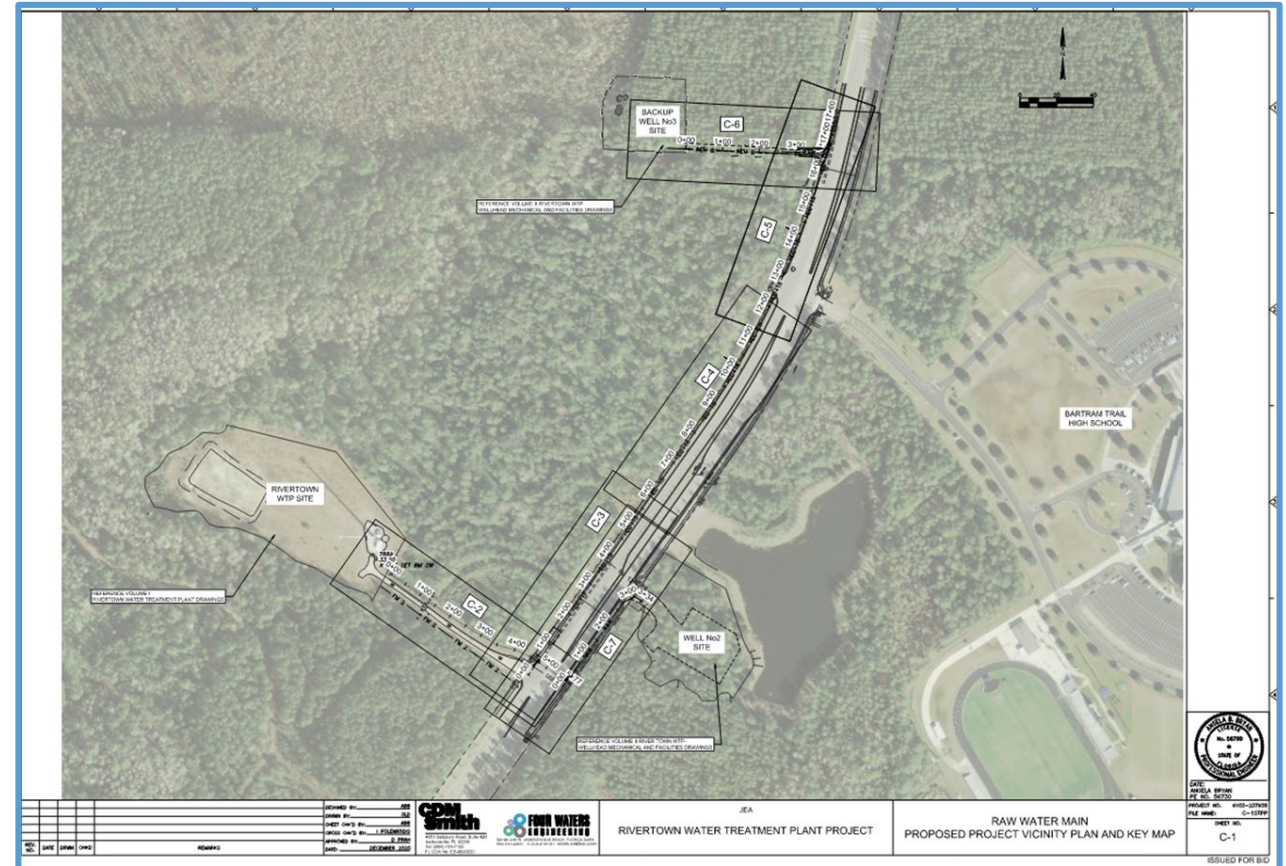
- Raw Water Pipelines:

- From Well No. 2:

- 325 LF of 12-inch DIP open cut (Note: addition pipe footage to be included in Lump Sum for Well No. 2)
 - Disconnect existing east-west run of 20-inch water pipe from north-south run of 20-inch water main, and re-purpose east-west 20-inch pipe to raw water line.

- From Backup Well No. 3 (Alternate Bid Items):

- 1,585 LF of 18-inch DR11 HDPE HDD pipe
 - 125 LF of 16-inch DIP open cut
 - 310 LF of 12-inch DIP open cut (Note: addition pipe footage to be included in Lump Sum for Well No. 3)
 - Connect to 20-inch raw water pipe at intersection of Longleaf Pine Parkway and WTP access road.
- 2-inch PVC reuse water pipe for irrigation.
- Bends, fittings, valves, flushing, air release, and sample tap assemblies.



Scope – Part 2 Package (continued)

Note: See the project specifications and drawings for detailed discussion and description of project scope and requirements

- Florida Power & Light (FP&L) Infrastructure:
 - FP&L Infrastructure (e.g., conduit, transformer pads, pull boxes, etc.) will be installed under this contract. FP&L will install electrical cable, transformers, and make power connections.
 - FP&L will provide materials; however, the materials will have to be picked up at FP&L facility and transported to the job site.
 - Estimated quantities included in bid workbook. Final payment will be based on installed quantities.
 - FP&L Infrastructure for:
 - WTP
 - Well No. 2
 - Backup Well No. 3 (Alternate Bid Item)

Scope – Part 2 Package (continued)

Note: See the project specifications and drawings for detailed discussion and description of project scope and requirements

- All Associated Work to Provide Complete and Operational Facilities:

- Mobilization
- Permits
- Testing
- Landscaping and Site Restoration
- Disinfection and Bact-T Testing
- Test & Check-out of Equipment
- Training for JEA Personnel
- O&M Manuals
- As-Built Drawings
- Demobilization

- Allowances for Base and Alternate Bid Items:

- Testing (i.e., density and concrete) as defined in Solicitation
- Supplement Work Authorization

Technical Documents

- *Technical Specifications, Volume IV-A, Rivertown Water Treatment Plant Project including:*
 - Geotechnical Exploration and Evaluation Report
 - Soft Dig Report
- *Technical Specifications, Volume IV-B, Rivertown Water Treatment Plant, Well No.s 1, 2, and Backup Well No.3, Wellhead Mechanical and Facilities*
- *Technical Specifications, Volume IV-C, for the Construction Rivertown Water Treatment Plant – Raw Water Piping*
- *Construction Drawings for Rivertown Water Treatment Plant, Volume 1 – Water Treatment Plant*
- *Construction Drawings for Rivertown Water Treatment Plant, Well No.s 1, 2, and Backup Well No. 3, Volume II - Wellhead Mechanical and Facilities,*
- *Construction Drawings for Rivertown Water Treatment Plant, Volume III – Raw Water Pipelines*
- Rivertown Water Treatment Plant, *Volume V- FP&L Electrical Power Infrastructure*

Schedule

- The Contractor shall provide a consolidated, comprehensive, and integrated schedule for the efficient and effective performance of the work in the Consolidated Rivertown WTP Project (e.g., Part 1 Package and Part 2 Package).

Note 1: See the project specifications and drawings for detailed discussion and description of project scope and requirements.

Schedule (continued)

- All work to be completed after the Notice to Proceed as follows:

Description	Substantial Completion	Final Completion
Part 1 Package work for Well No. 1 including Drilling, Construction, Development and Water Quality Sampling	130 calendar days after Notice to Proceed	160 calendar days after Notice to Proceed
Part 1 Package work for Well No. 2 including Drilling, Construction, Development and Water Quality Sampling	260 calendar days after Notice to Proceed	290 calendar days after Notice to Proceed
All Part 2 Package work except for Backup Well No. 3 Wellhead Mechanical, Facility, and Access Road	480 calendar days after Notice to Proceed	540 calendar days after Notice to Proceed
Backup Well No. 3 (if authorized by JEA) Wellhead Mechanical, Facility, and Access Road	540 calendar days after Notice to Proceed	570 calendar days after Notice to Proceed

Note 1: See the project specifications and drawings for detailed discussion and description of project scope and requirements.

Permitting/Regulatory Status

- See the document titled: *Permitting / Regulatory Status for the Rivertown Water Treatment Plant Project*.
- Not all permits/regulatory approvals have been received. Field work will not be allowed on each site until all necessary permits/approvals have received for the respective site.

Bid Workbook

- Review Consolidated Bid Workbook for Part 1 Package and Part 2 Package.
 - Base Bid Items
 - Alternate Bid Items
- Limitations on General Conditions:
 - The “Sum of all General Conditions Bid Items plus Mobilization and Demobilization Bid Items” divided by the “Total Bid Price for Part 1 and Part 2” shall not exceed (10%).
 - General Conditions are defined in the Solicitation.

Bid Workbook (continued)

- The bids will be evaluated for contract award based on the “Total Bid Price for Part 1 and Part 2 (Base Bid Items Plus Alternate Bid Items)” price.
- The actual authorization of alternate bid items for implementation will be based on JEA’s best interests and available funding.
- If there are questions/issues on the bid form, please identify early so that they can be promptly resolved.

JEA Standards and Pending Addendum

- Compliance with JEA Standards is required.
- JEA's Water and Wastewater Standards and Approved Materials are available at:
 - https://www.jea.com/Engineering_and_Construction/Water_and_Wastewater_Standards/
- JEA's Facilities Standards are available at:
 - https://www.jea.com/engineering_and_construction/jea_facilities_standards/
- An addendum will be issued to clarify approved I&C integrators and VFD's based on JEA's Standards and Approved Materials

Points to Note

- Overexcavation of unsuitable soil and providing and installing fill.
- Provision and installation of granular backfill complying with the specifications to meet percolation requirements for ERP Stormwater Permitting.
- The sites are near Bartram Trail High school:
 - Installation of temporary security fence is required before and during construction to minimize intrusion and potential safety concerns/injuries.
 - Must consider traffic

Points to Note (continued)

- Rivertown Developer restrictions:
 - Imposed on Well 2 site.
 - Do Not clear/distribute beyond the limits of clearing!!
- Do Not infringe on any Adjacent Properties!!
- Another Developer may perform the following, which will may influence implementation of Alternate Bid Items:
 - Develop road and utilities between Longleaf Pine Parkway and WTP entrance (need to cooperate on WTP access during road & utility construction).
 - Construct wastewater pump station on Developer's property and install sanitary sewer connection to WTP property.
- Other Interfaces:
 - Cellular companies for cell tower facility on east side of WTP site.
 - FP&L for power.

Points to Note (continued)

- Contractor must avoid track-out of mud, dirt, debris, etc onto Longleaf Pine Parkway. Contractor will be responsible for prompt removal and cleanup of any track-out that occurs.
- Contractor will need to provide temporary power and water supply. Options for water service include:
 - Install a temporary construction service off the finished water main in the Longleaf Pine Parkway ROW.
 - Install a temporary well.
- Work area is within JEA property:
 - JEA access badges required
 - Masks are required if social distancing cannot be performed
 - No weapons, alcohol, illegal drugs

Mandatory Site Tour

- *Potential hazards:*
 - *Potential COVID – 19 Exposure*
 - *Heat*
 - *Tripping hazards*
 - *Traffic on Longleaf Pine Parkway*
 - *Stinging insects, ticks, snakes, etc.*
 - *Etc*
- *PPE*
 - *Mask*
 - *Safety boots*
 - *Hard hats (optional)*
 - *Safety glasses*
 - *Reflective vest*
- No weapons, alcohol, or illegal drugs

QUESTIONS