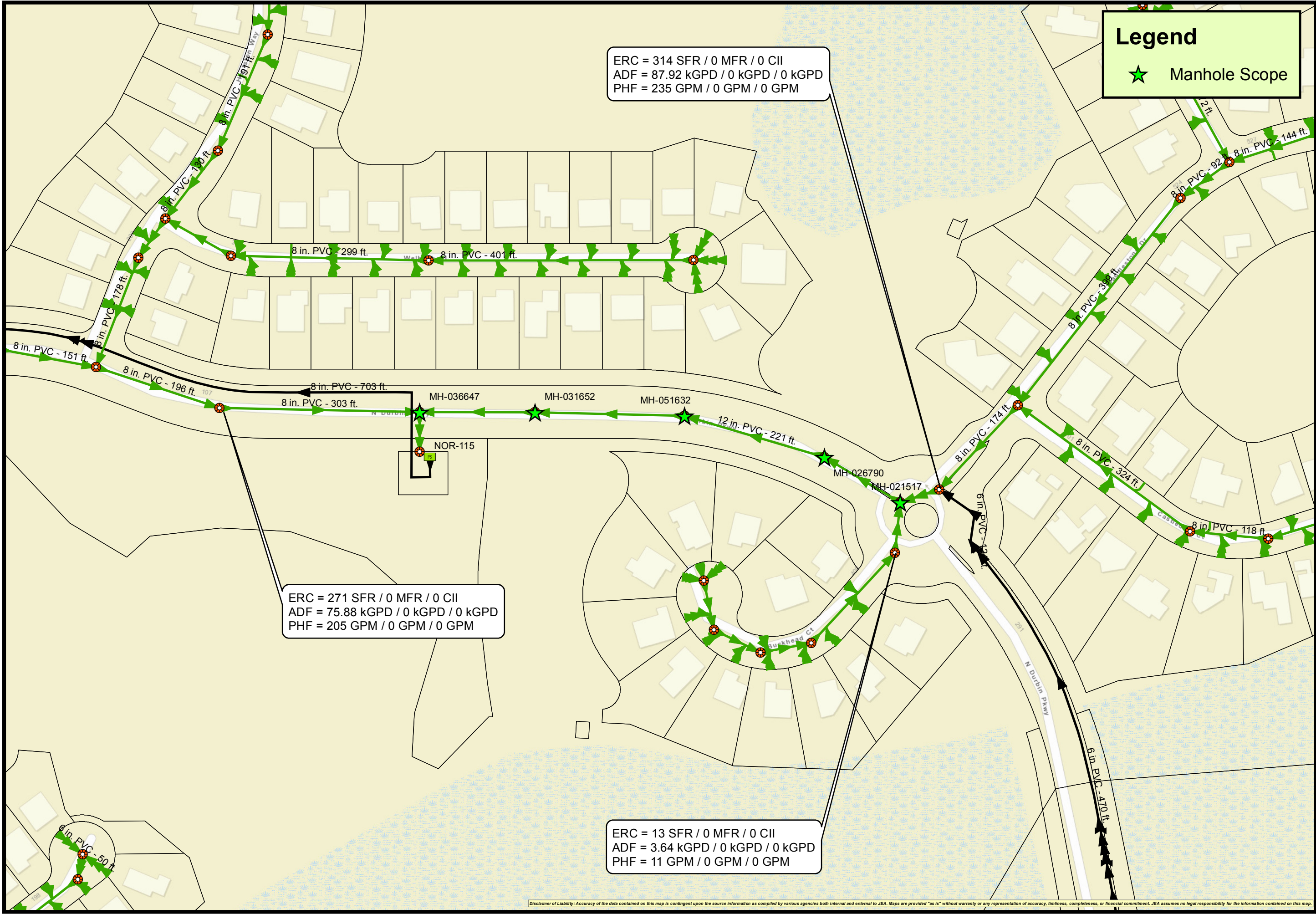


**Legend**

★ Manhole Scope

**Durbin Pkwy N  
 Manhole Replacement  
 Scope of Work**



Disclaimer of Liability: Accuracy of the data contained on this map is contingent upon the source information as compiled by various agencies both internal and external to JEA. Maps are provided "as is" without warranty or any representation of accuracy, timeliness, completeness, or financial commitment. JEA assumes no legal responsibility for the information contained on this map.



# AS-BUILT

AS-BUILT INFORMATION SHOWN THUS

AS-BUILT INFORMATION SHOWN HEREON PROVIDED BY THE CONTRACTOR

## AS-BUILT

INFORMATION PROVIDED BY:

Date: September 23, 2006  
Name: VALLENCOURT CONSTRUCTION COMPANY, INC.  
Address: 1701 BLANDING BOULEVARD  
MIDDLEBURG, FL 32068  
Phone: 904-291-9330

I HEREBY CERTIFY THAT THE MATERIALS AND QUANTITIES USED IN THE CONSTRUCTION OF:

Pavement \_\_\_\_\_  
Curb & Gutter \_\_\_\_\_  
Stormwater & Drainage System \_\_\_\_\_  
Underdrain \_\_\_\_\_  
Water Main \_\_\_\_\_  
Sanitary Gravity System \_\_\_\_\_  
Force Main \_\_\_\_\_  
Lift Station \_\_\_\_\_

ARE IN ACCORDANCE WITH THE APPROVED PLANS AND CITY SPECIFICATIONS, UNLESS OTHERWISE APPROVED BY THE CITY ENGINEER.

Contractor's Signature

Michael A. Valencourt CUC056911  
Contractor's Name and State License Number

### SEWER SERVICES FOR LOTS ALONG WELBECK PLACE & HUNSTON WAY

LOTS	GROUND EL	SERVICE EL	LOTS	GROUND EL	SERVICE EL
1	21.81	18.32	22	23.68	19.10
2	23.33	20.12	23	23.31	19.58
3	23.62	18.66	24	23.13	19.38
4	23.01	18.31	25	22.97	18.78
5	23.06	18.22	26	23.21	19.20
6	22.92	18.26	27	23.36	18.90
7	23.08	18.48	28	23.34	19.91
8	23.21	18.53	29	23.17	19.18
9	23.40	18.36	30	23.05	18.56
10	23.92	18.52	31	23.20	18.50
11	23.95	18.38	32	23.43	18.60
12	23.65	19.13	33	23.09	18.86
13	23.32	18.62	34	23.32	19.06
14	23.73	17.68	35	23.35	20.05
15	23.52	17.37	36	23.43	19.12
16	22.59	16.90	37	22.93	18.81
17	23.40	18.56	38	23.45	19.43
18	23.71	18.74	39	23.44	19.58
19	23.64	18.07	40	23.73	19.15
20	23.90	18.57	41	24.00	19.92
21	24.07	18.32	42	23.78	19.95
			43	23.42	19.20
			44	21.82	18.02

AS-BUILT

INFORMATION PROVIDED BY:

DATE: September 23, 2006  
NAME: ELAND + ASSOCIATES, INC.  
ADDRESS: 615 BLANDING BOULEVARD  
ORANGE PARK, FLORIDA 32065  
PHONE NO: 904-272-1000

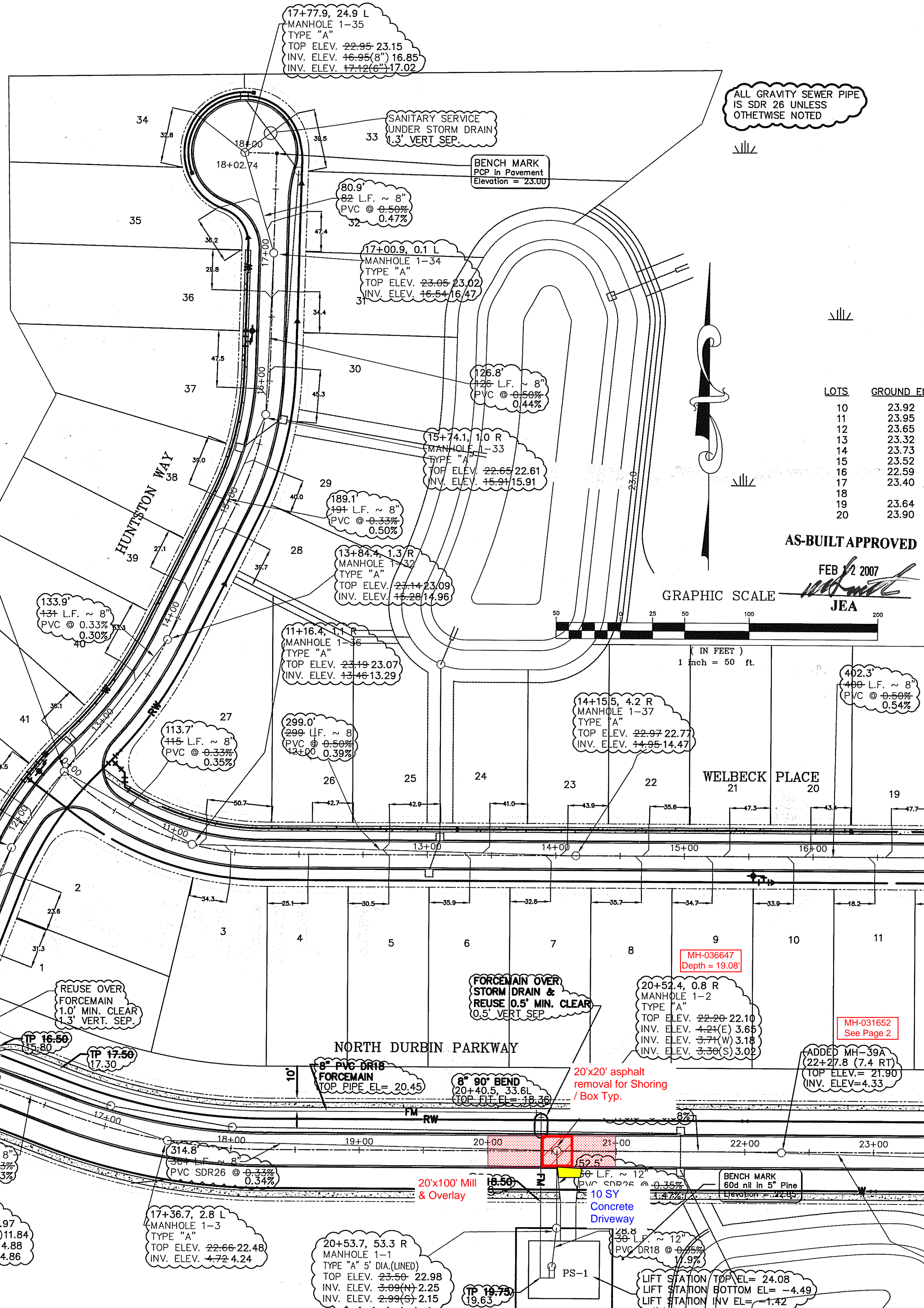
I HEREBY CERTIFY THAT THE

PAVEMENT \_\_\_\_\_  
CURB & GUTTER \_\_\_\_\_  
STORMWATER DRAINAGE \_\_\_\_\_  
SYSTEM \_\_\_\_\_  
UNDERDRAIN CONNECTIONS \_\_\_\_\_

WATERMAIN \_\_\_\_\_  
SANITARY SYSTEM \_\_\_\_\_  
FORCE MAIN \_\_\_\_\_  
REUSE MAIN \_\_\_\_\_

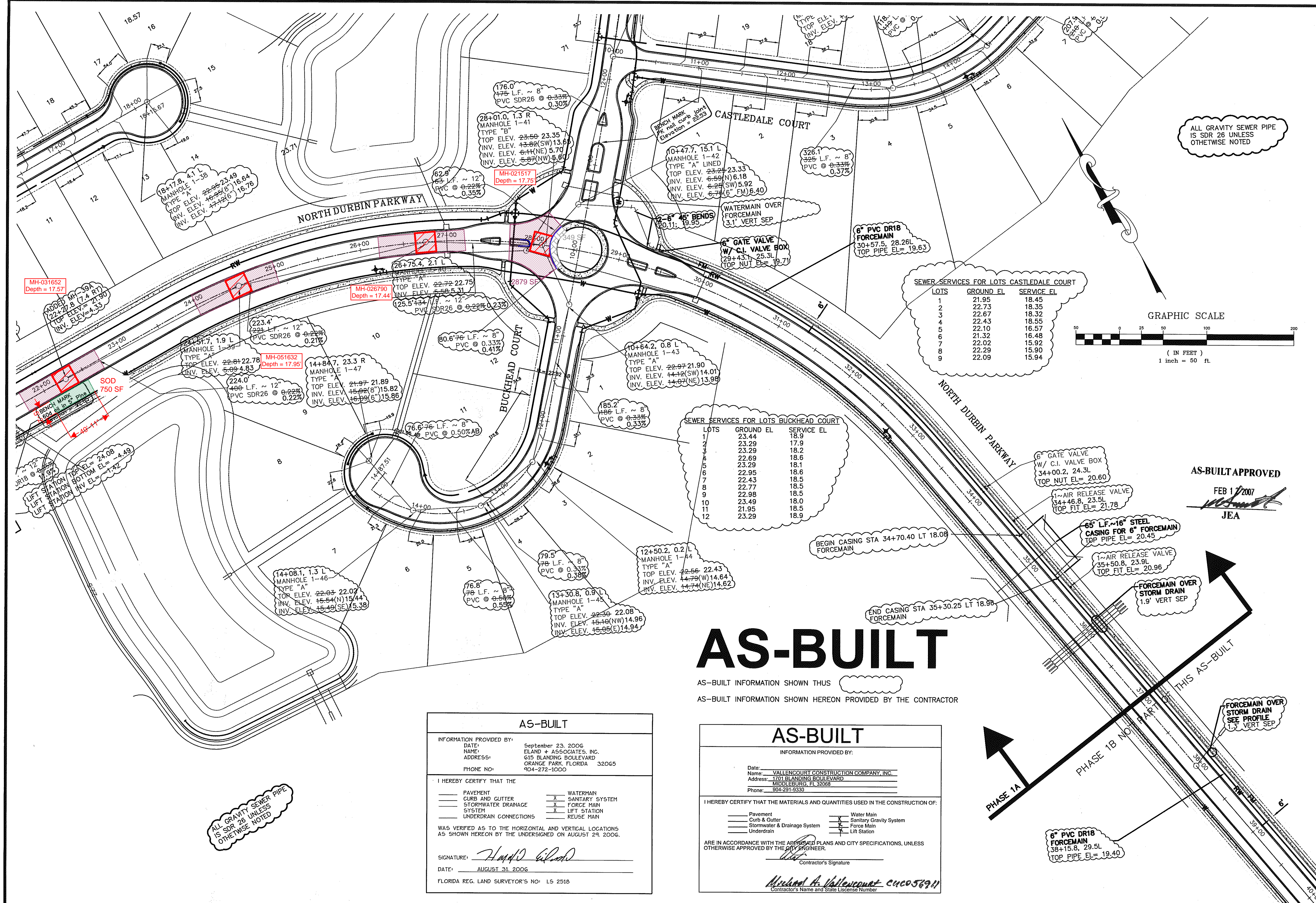
WAS VERIFIED AS TO THE HORIZONTAL AND VERTICAL LOCATIONS AS SHOWN HEREON BY THE UNDERSIGNED ON AUGUST 29, 2006.

SIGNATURE: *Handwritten Signature*  
DATE: AUGUST 31, 2006  
FLORIDA REG. LAND SURVEYOR'S NO: LS 2518

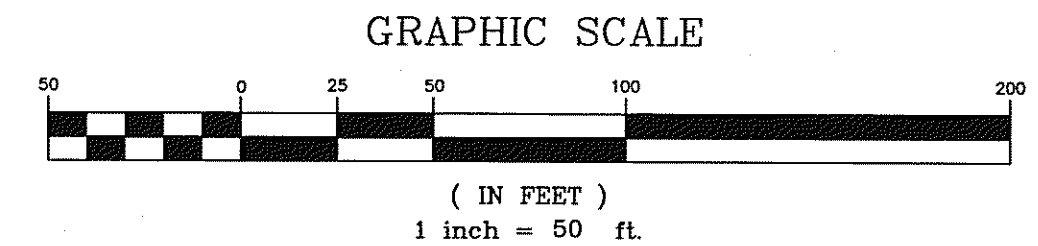




C:\Land Projects\2006\AS-BUILT\SEWER & FM\ang\_28/2007 10:45:53 AM.LDD 2005 /HTE/Eliland & Associates, Inc.



ALL GRAVITY SEWER PIPE IS SDR 26 UNLESS OTHERWISE NOTED



SEWER SERVICES FOR LOTS CASTLEDALE COURT

LOTS	GROUND EL	SERVICE EL
1	21.95	18.45
2	22.73	18.35
3	22.67	18.32
4	22.43	18.55
5	22.10	16.57
6	21.32	16.48
7	22.02	15.92
8	22.29	15.90
9	22.09	15.94

SEWER SERVICES FOR LOTS BUCKHEAD COURT

LOTS	GROUND EL	SERVICE EL
1	23.4	18.9
2	23.29	17.9
3	23.29	18.2
4	22.69	18.6
5	23.29	18.1
6	22.95	18.6
7	22.43	18.5
8	22.77	18.5
9	22.98	18.5
10	23.49	18.0
11	21.95	18.5
12	23.29	18.9

**AS-BUILT**  
AS-BUILT INFORMATION SHOWN THUS  
AS-BUILT INFORMATION SHOWN HEREON PROVIDED BY THE CONTRACTOR

**AS-BUILT**

INFORMATION PROVIDED BY:

DATE: September 23, 2006  
NAME: ELAND + ASSOCIATES, INC.  
ADDRESS: 615 BLANDING BOULEVARD  
ORANGE PARK, FLORIDA 32065  
PHONE NO: 904-272-1000

I HEREBY CERTIFY THAT THE

PAVEMENT	WATERMAIN
CURB AND GUTTER	SANITARY SYSTEM
STORMWATER DRAINAGE SYSTEM	FORCE MAIN
UNDERDRAIN CONNECTIONS	LIFT STATION
	REUSE MAIN

WAS VERIFIED AS TO THE HORIZONTAL AND VERTICAL LOCATIONS AS SHOWN HEREON BY THE UNDERSIGNED ON AUGUST 29, 2006.

SIGNATURE: *Handwritten Signature*  
DATE: AUGUST 31, 2006  
FLORIDA REG. LAND SURVEYOR'S NO: LS 2518

**AS-BUILT**

INFORMATION PROVIDED BY:

Date: \_\_\_\_\_  
Name: VALLENCOURT CONSTRUCTION COMPANY, INC.  
Address: 1701 BLANDING BOULEVARD  
MIDDLEBURG, FL 32068  
Phone: 804-291-9330

I HEREBY CERTIFY THAT THE MATERIALS AND QUANTITIES USED IN THE CONSTRUCTION OF:

Pavement	Water Main
Curb & Gutter	Sanitary Gravity System
Stormwater & Drainage System	Force Main
Underdrain	Lift Station

ARE IN ACCORDANCE WITH THE APPROVED PLANS AND CITY SPECIFICATIONS, UNLESS OTHERWISE APPROVED BY THE CITY ENGINEER.

Contractor's Signature: *Handwritten Signature*  
Contractor's Name and State License Number: Michael A. Valencourt 040058911

SEWER & FM PLAN

DURBIN CROSSING NORTH PH-1A  
(DURBIN CROSSING PUD 2003-16, ORD 2004-07)  
FOR DURBIN CROSSING SOUTH, LLC

Valencourt Construction

1701 Blanding Blvd. Middleburg FL 32068  
PHONE NUMBER (804) 291-9330 FAX NUMBER (804) 291-4922

Durbin's Crossing N  
Phase 1A  
54713

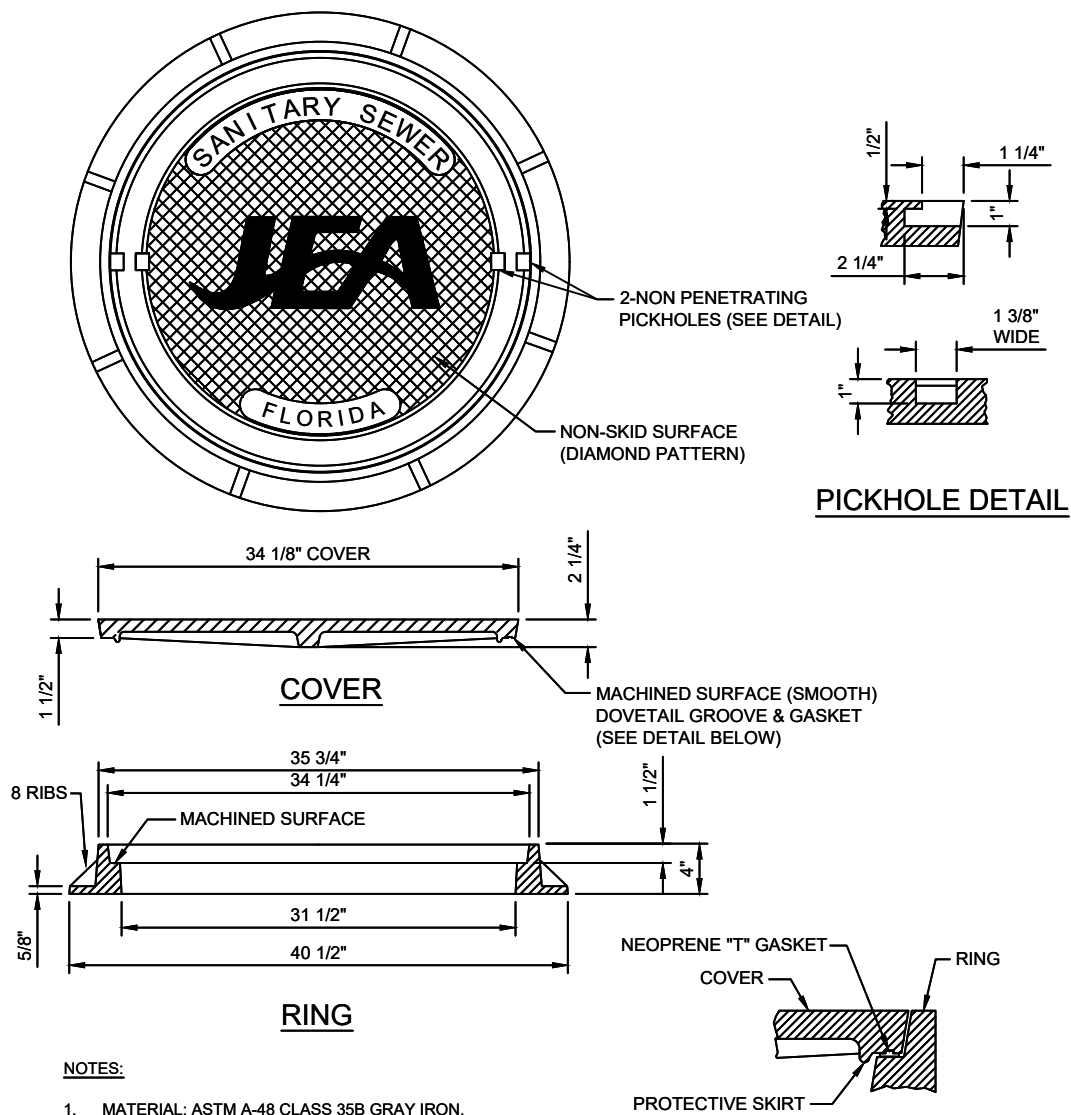
DR-NO

REVISION

REV1	REV2	REV3	REV4	REV5	REV6	REV7	REV8	REV9	REV10	REV11	REV12
ETNO-BOR PROJ-NO	DR-BOR	A.L.D.	DES-BOR	CK-BOR	CHECK	1-15-07					

8B

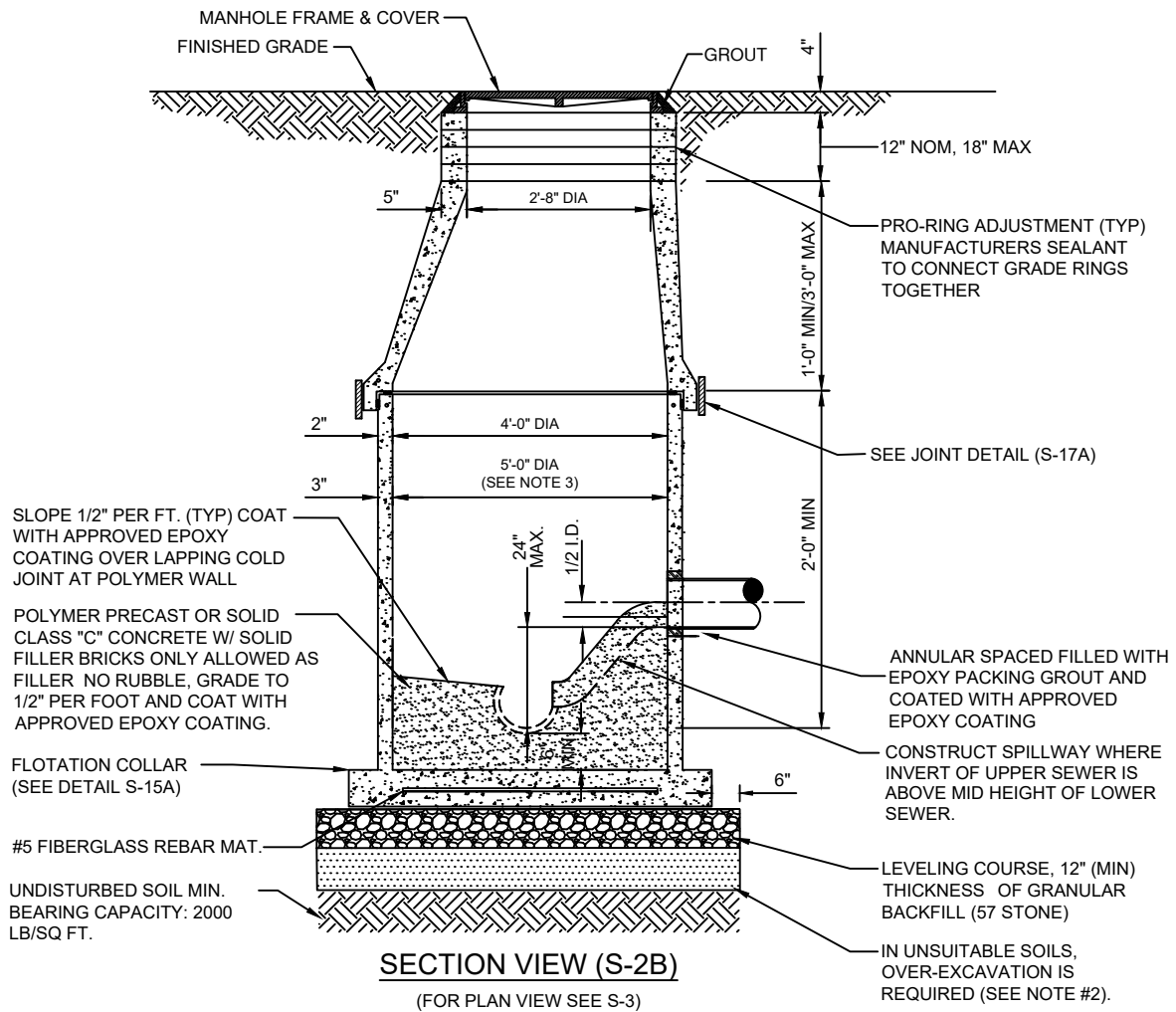




# SANITARY SEWER MANHOLE FRAME AND COVER

JANUARY 2020

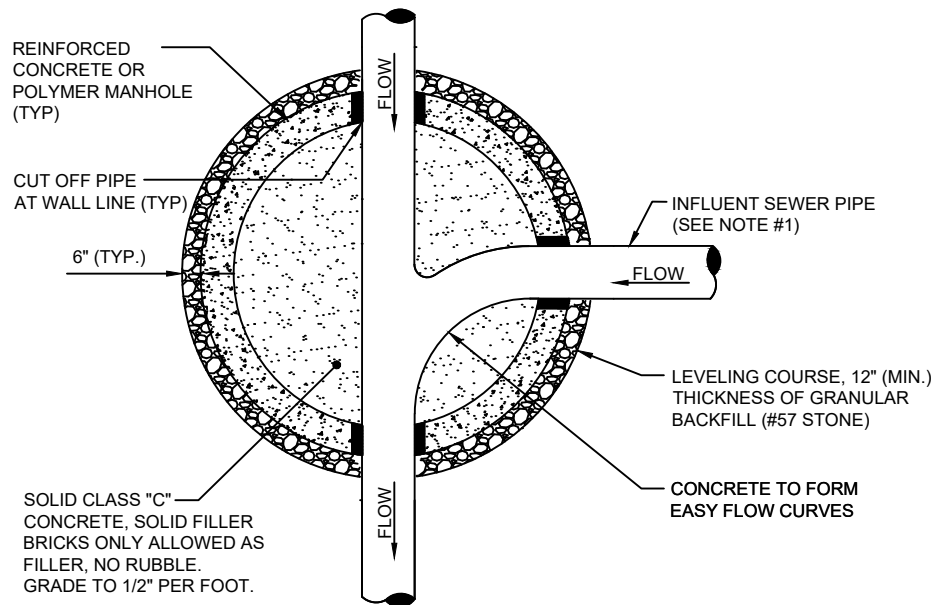
PLATE S-1



NOTES:

1. ALL MANHOLE JOINTS BELOW THE TOP COVER SECTION SHALL INCLUDE A 18" WIDE (MIN) EXTERIOR JOINT TAPE (WITH PRIMER). TAPE ON THE CONE SECTION IS OPTIONAL. SEE PLATE S-17.
2. JUNCTION MANHOLE (CLOSEST TO WETWELL) SHALL BE 5' DIA
3. IN SILTS, CLAY OR HIGHLY ORGANIC SOILS (FINE-GRAINED SOILS INCLUDING SOIL GROUPS ML, CL, OL, MH, CH, OH AND PT) THE SOILS SHALL BE OVER-EXCAVATED AN ADDITIONAL 24" (AT A MIN.) AND BACKFILLED WITH AASHTO CLASS A-3 SOIL (COMPACTED TO 98%, ASTM D1557) OR OVER-EXCAVATE AN ADDITIONAL 12" (AT A MIN.) AND BACKFILL WITH GRANULAR BACKFILL (57 STONE).

## SANITARY SEWER POLYMER TYPE "A" MANHOLE 8"-21" SEWERS



NOTES:

1. THE ANGLE BETWEEN ALL INFLUENT FLOW CHANNELS AND EFFLUENT PIPE SHALL BE BETWEEN 90° - 180° UNLESS OTHERWISE APPROVED BY JEA.

PLAN VIEW (S-3)

(FOR SECTION VIEW SEE S-2, S-2A)





- NOTES:**
1. THE ANGLE BETWEEN ALL INFLUENT FLOW CHANNELS AND EFFLUENT PIPE SHALL BE 90° OR GREATER UNLESS APPROVED OTHERWISE BY JEA.
  2. THE 8" HIGH-LINE, WHERE UTILIZED, SHALL ENTER THE MANHOLE OFF-CENTER AS SHOWN ABOVE.