

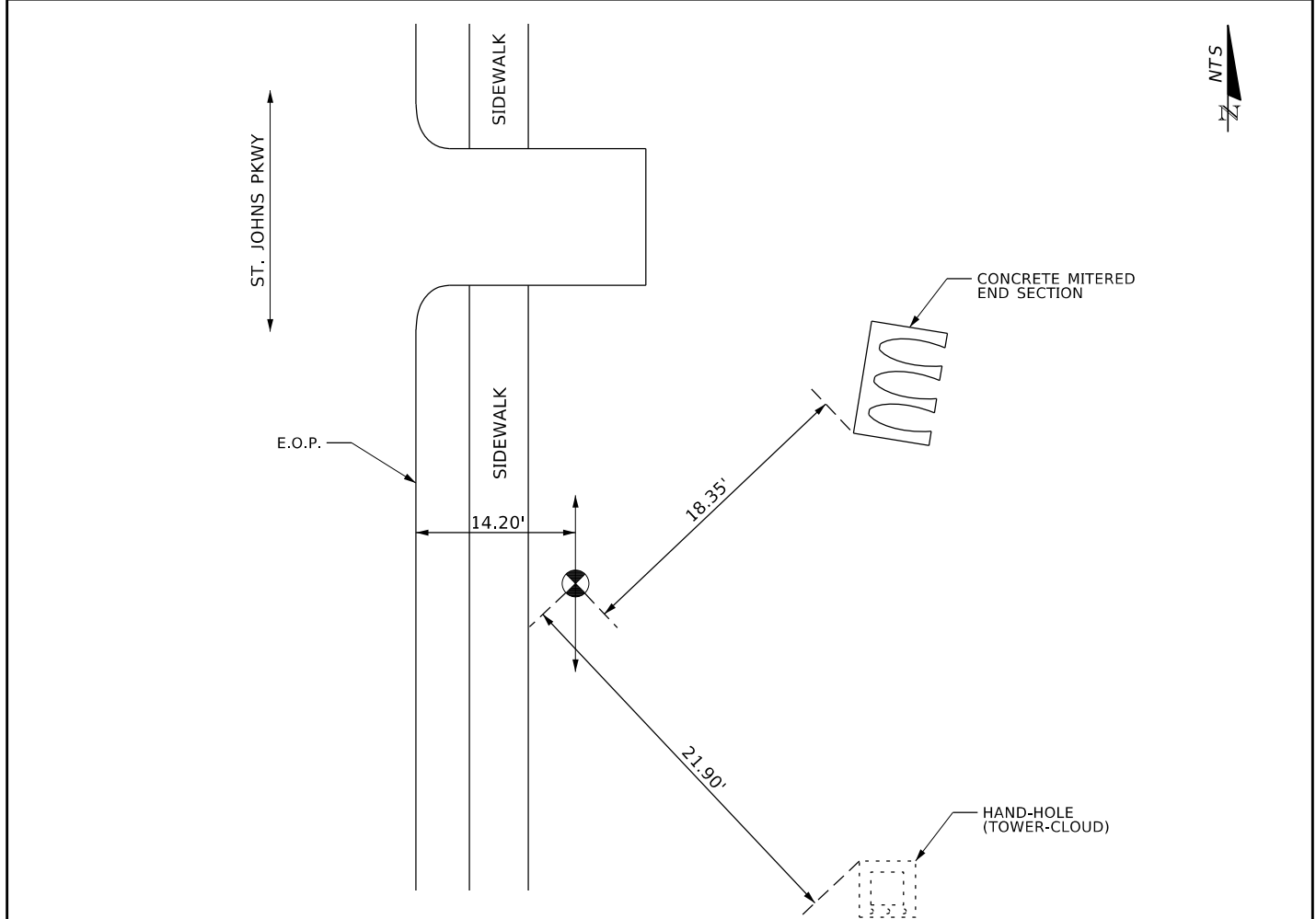
**F.R. ALEMAN**& Associates, Inc.
CONSULTING ENGINEERS & SURVEYORS
6196 LAKE GRAY BLVD., STE. 101, JACKSONVILLE, FL 32244**VACUUM TEST HOLE REPORT**

TEST HOLE NO.: 1

FRA JOB NO.: 2984

WORK ORDER NO.: 5

PROJECT NAME: ST. JOHNS PARKWAY RECLAIM		FORM BY: C. REYES	ASSISTED BY: A. M.
LOCATE REQUESTED BY: R. E. HOLLAND & ASSOCIATES		FORM CHECKED BY: DAILYS TRABA	
REQUESTED LOCATE: FORCE MAIN	NO. HOLES: 1	DATE: 09/06/2017	TIME: -
LOCATED UTILITY: FORCE MAIN	UTILITY OWNER: JEA (WATER & SEWER)		
MATERIAL AS FOUND: PVC	PAVEMENT TYPE: N/A		
SIZE AS FOUND: 16"	SIZE EXPECTED: 16"	PAVEMENT CONDITION: N/A	
UTILITY CONDITION: GOOD	SOIL CONDITIONS: SOFT/DRY/DIRT		
PAINT INSTALLED: GREEN	PROPOSED: N/A		
<p>ELEV SURVEY PIN: N/A</p> <p>COVER (TOP): 5.29'</p> <p>ELEV (TOP): N/A</p> <p>COVER (BOTTOM): 6.86'</p> <p>ELEV (BOTTOM): N/A</p> <p>WIDTH: 1.57'</p> <p>FACING: N&S</p> <p>PAVEMENT: N/A</p> <p>SUB-PAVEMENT: N/A</p>		INSTALLED: HUB	
		AT: CROWN	
		SURVEY PIN LOCATED BY: F.R. ALEMAN & ASSOCIATES	
		JOB MEASUREMENT TYPE: U.S. FOOT	
NOTES: EXCAVATED TO A DEPTH OF 5.29' FOUND A 16" PVC F. M. JEA (WATER & SEWER)			
REFER TO SHEET No. 7 IN THE SITE PLAN			
STATION (±) 50+62.00		OFFSET: 14.20' LT	



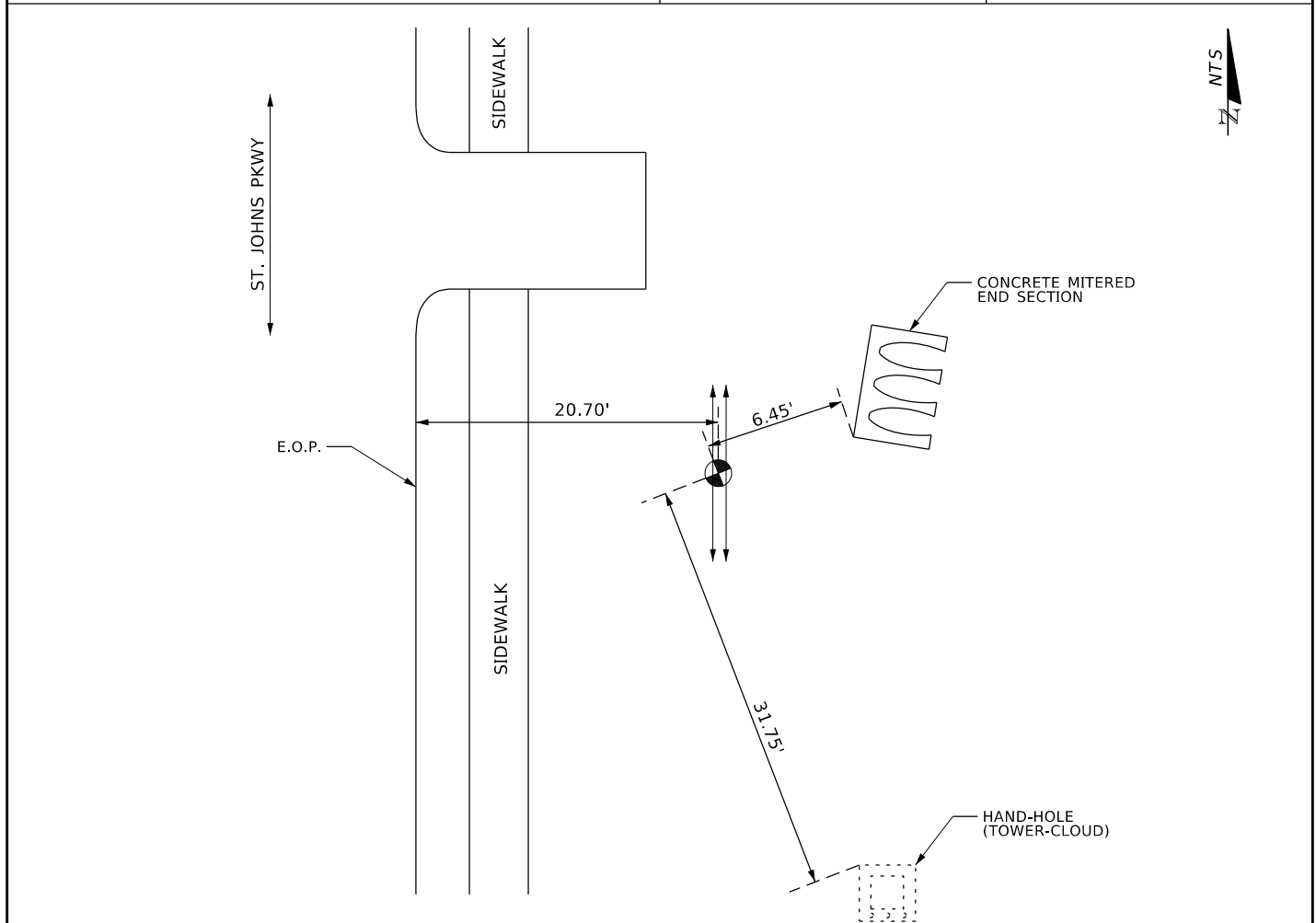
VACUUM TEST HOLE REPORT

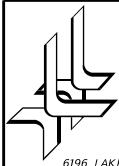
TEST HOLE NO.: 2

FRA JOB NO.: 2984

WORK ORDER NO.: 5

PROJECT NAME: ST. JOHNS PARKWAY RECLAIM		FORM BY: C. REYES		ASSISTED BY: A. M.	
LOCATE REQUESTED BY: R. E. HOLLAND & ASSOCIATES		FORM CHECKED BY: DAILYS TRABA			
REQUESTED LOCATE: COMMUNICATION		NO. HOLES: 1	DATE: 09/06/2017	TIME: -	
LOCATED UTILITY: COMMUNICATION		UTILITY OWNER: F.P.L.			
MATERIAL AS FOUND: PLASTIC		PAVEMENT TYPE: N/A			
SIZE AS FOUND: 1 1/4" (2)	SIZE EXPECTED: 1 1/4"	PAVEMENT CONDITION: N/A			
UTILITY CONDITION: GOOD		SOIL CONDITIONS: SOFT/DRY/DIRT			
PAINT INSTALLED: ORANGE		PROPOSED: N/A			
<p>ELEV SURVEY PIN N/A</p> <p>COVER (TOP) 4.61'</p> <p>ELEV (TOP) N/A</p> <p>COVER (BOTTOM) 4.72'</p> <p>ELEV (BOTTOM) N/A</p> <p>WIDTH 0.22'</p> <p>FACING N&S</p>		<p>PAVEMENT N/A</p> <p>SUB-PAVEMENT N/A</p> <p>INSTALLED: HUB</p> <p>AT: CROWN</p> <p>SURVEY PIN LOCATED BY: F.R. ALEMAN & ASSOCIATES</p> <p>JOB MEASUREMENT TYPE: U.S. FOOT</p> <p>NOTES: EXCAVATED TO A DEPTH OF 4.61' FOUND 1 1/4" (2) PLASTIC COMM. LINES FOC (F.P.L.)</p> <p>REFER TO SHEET No. 7 IN THE SITE PLAN</p>			
		STATION (±) 50+54.00		OFFSET: 20.70' LT	



**F.R. ALEMAN**

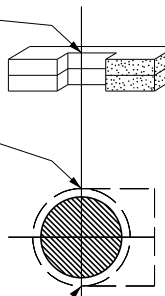
& Associates, Inc.
CONSULTING ENGINEERS & SURVEYORS
6196 LAKE GRAY BLVD., STE. 101, JACKSONVILLE, FL 32244

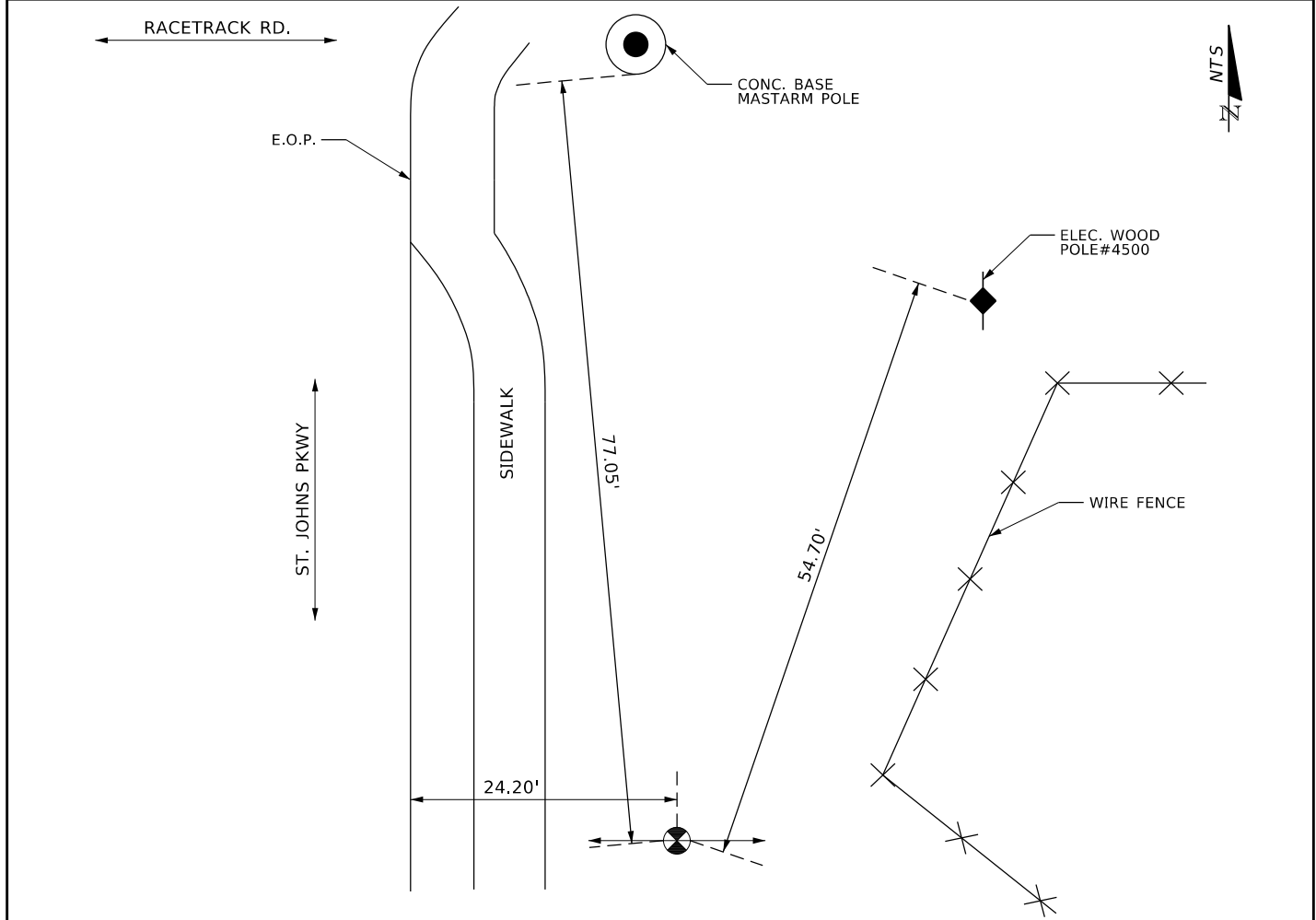
VACUUM TEST HOLE REPORT

TEST HOLE NO.: 3

FRA JOB NO.: 2984

WORK ORDER NO.: 5

PROJECT NAME: ST. JOHNS PARKWAY RECLAIM		FORM BY: C. REYES	ASSISTED BY: A. M.
LOCATE REQUESTED BY: R. E. HOLLAND & ASSOCIATES		FORM CHECKED BY: DAILYS TRABA	
REQUESTED LOCATE: GAS	NO. HOLES: 1	DATE: 09/06/2017	TIME: -
LOCATED UTILITY: GAS	UTILITY OWNER: TECO GAS		
MATERIAL AS FOUND: PLASTIC	PAVEMENT TYPE: N/A		
SIZE AS FOUND: 6"	SIZE EXPECTED: 6"	PAVEMENT CONDITION: N/A	
UTILITY CONDITION: GOOD	SOIL CONDITIONS: SOFT/DRY/DIRT		
PAINT INSTALLED: YELLOW	PROPOSED: N/A		
<div><div>ELEV SURVEY PIN N/A</div><div>COVER (TOP) 2.73'</div><div>ELEV (TOP) N/A</div><div>COVER (BOTTOM) 3.29'</div><div>ELEV (BOTTOM) N/A</div><div>WIDTH 0.56'</div><div>FACING E&W</div></div> <div><div>PAVEMENT N/A</div><div>SUB-PAVEMENT N/A</div></div> 		INSTALLED: HUB AT: CROWN	
		SURVEY PIN LOCATED BY: F.R. ALEMAN & ASSOCIATES	
		JOB MEASUREMENT TYPE: U.S. FOOT	
		NOTES: EXCAVATED TO A DEPTH OF 2.73' FOUND A 6" PLASTIC G. M. (TECO GAS)	
		REFER TO SHEET No. 4 IN THE SITE PLAN	
		STATION (±) 10+90.00	OFFSET: 24.20' LT



**F.R. ALEMAN**& Associates, Inc.
CONSULTING ENGINEERS & SURVEYORS

6196 LAKE GRAY BLVD., STE. 101, JACKSONVILLE, FL 32244

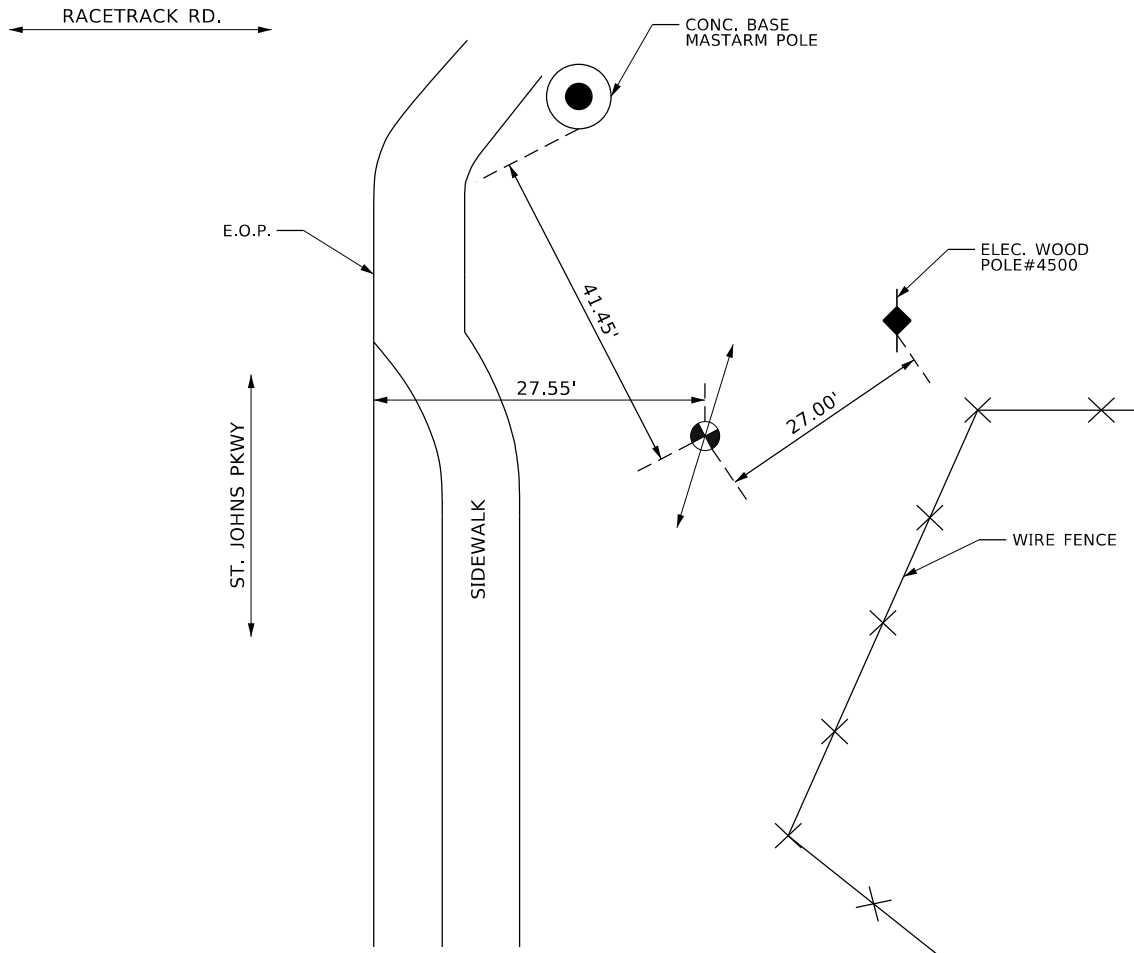
VACUUM TEST HOLE REPORT

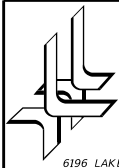
TEST HOLE NO.: 4

FRA JOB NO.: 2984

WORK ORDER NO.: 5

PROJECT NAME: ST. JOHNS PARKWAY RECLAIM		FORM BY: C. REYES	ASSISTED BY: A. M.
LOCATE REQUESTED BY: R. E. HOLLAND & ASSOCIATES		FORM CHECKED BY: DAILYS TRABA	
REQUESTED LOCATE: TEL	NO. HOLES: 1	DATE: 09/06/2017	TIME: -
LOCATED UTILITY: TEL	UTILITY OWNER: AT&T		
MATERIAL AS FOUND: DB CABLE	PAVEMENT TYPE: N/A		
SIZE AS FOUND: 1"	SIZE EXPECTED: 1"	PAVEMENT CONDITION: N/A	
UTILITY CONDITION: GOOD	SOIL CONDITIONS: SOFT/DRY/DIRT		
PAINT INSTALLED: ORANGE	PROPOSED: N/A		
<div><div>ELEV SURVEY PIN N/A</div><div>COVER (TOP) 2.61'</div><div>ELEV (TOP) N/A</div><div>COVER (BOTTOM) 2.69'</div><div>ELEV (BOTTOM) N/A</div><div>WIDTH 0.08'</div><div>FACING NE&SW</div></div> <div><div>PAVEMENT N/A</div><div>SUB-PAVEMENT N/A</div></div>		INSTALLED: HUB AT: CROWN	
		SURVEY PIN LOCATED BY: F.R. ALEMAN & ASSOCIATES	
		JOB MEASUREMENT TYPE: U.S. FOOT	
		NOTES: EXCAVATED TO A DEPTH OF 2.61' FOUND A 1" DB CABLE TEL. (AT&T)	
		REFER TO SHEET No. 4 IN THE SITE PLAN	
		STATION (±) 10+62.00	OFFSET: 27.55' LT





F.R. ALEMAN

& Associates, Inc.
CONSULTING ENGINEERS & SURVEYORS
6196 LAKE GRAY BLVD., STE. 101, JACKSONVILLE, FL 32244

VACUUM TEST HOLE REPORT

TEST HOLE NO.: 5

FRA JOB NO.: 2984

WORK ORDER NO.: 5

PROJECT NAME: ST. JOHNS PARKWAY RECLAIM		FORM BY: C. REYES	ASSISTED BY: A. M.
LOCATE REQUESTED BY: R. E. HOLLAND & ASSOCIATES		FORM CHECKED BY: DAILYS TRABA	
REQUESTED LOCATE: COMMUNICATION	NO. HOLES: 1	DATE: 09/06/2017	TIME: -
LOCATED UTILITY: COMMUNICATION	UTILITY OWNER: F.P.L.		
MATERIAL AS FOUND: PLASTIC	PAVEMENT TYPE: N/A		
SIZE AS FOUND: 1 1/4" (2)	SIZE EXPECTED: 1 1/4"	PAVEMENT CONDITION: N/A	
UTILITY CONDITION: GOOD	SOIL CONDITIONS: SOFT/DRY/DIRT		
PAINT INSTALLED: ORANGE	PROPOSED: N/A		
<div><div>ELEV SURVEY PIN N/A</div><div>COVER (TOP) 2.92'</div><div>ELEV (TOP) N/A</div><div>COVER (BOTTOM) 3.14'</div><div>ELEV (BOTTOM) N/A</div></div> <div><div>PAVEMENT N/A</div><div>SUB-PAVEMENT N/A</div><div>0.11'X2=0.22'</div><div>0.22'</div><div>WIDTH 0.22'</div><div>FACING NE&SW</div></div>		INSTALLED: HUB AT: CROWN	
		SURVEY PIN LOCATED BY: F.R. ALEMAN & ASSOCIATES	
		JOB MEASUREMENT TYPE: U.S. FOOT	
		<p>NOTES:</p> <p>EXCAVATED TO A DEPTH OF 2.92'</p> <p>FOUND 1 1/4" (2) PLASTIC COMM. LINES FOC (F.P.L.)</p>	
		REFER TO SHEET No. 4 IN THE SITE PLAN	
		STATION (±) 10+67.00	OFFSET: 31.15' LT

