

# Subsurface Utility Engineering Test Hole Report



Test Hole: 01

Produced For: J. COLLINS ENGINEERING ASSOCIATES, LLC.

## Site Data

Project Name: JEA - JAMMES RD - WILSON BLVD. TO HARLOW BLVD. - WATER MAIN REPLACEMENT  
 Location: JAMMES RD @ GRAVES ST  
 Road Name: JAMMES RD Utility Owner: TECO  
 WO Number: W104320 Job Number: J062490 Task WO #: N/A City: JACKSONVILLE  
 Client Number: C08867 FPN #: N/A County: DUVAL  
 Station: Offset:  
 Collection Date: 9/30/2019 PM: RWG Ground Cover: ASPHALT Utility Chief: JUBA  
 Weather: CLEAR Soil Type: DIRT Utility Crew: JUBA  
 Time: N/A Soil Condition: HARD-WET Crew Number: 1

## Requested Utility Info

Utility Type: GAS Utility Material: COATED STEEL Size (OD): 6.5 X 6.5  
 Utility Condition: GOOD Testhole Marker: NAIL AND DISK Height (in): 6.5 Width (in): 6.5  
 Top of Pipe: 3.1  
 Utility Note:

## Profile View:

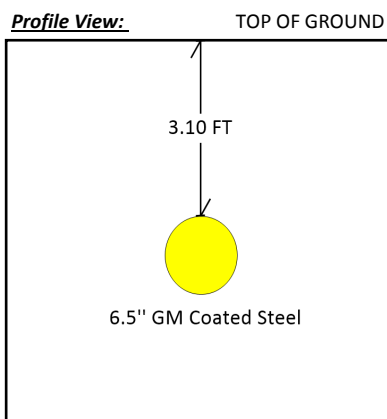


Image is not to scale

Tie	Description	Distance (Ft)	Distance (m)
01	WATER VALVE	24.3	7.407
02	END OF CLK FENCE	19.4	5.913
03	STREET SIGN POST	15.3	4.663

Additional Lines Found	Top of Pipe (ft)	Bottom of Pipe (ft)	Height (in)	Width (in)
Additional Utility 01	0	0	0	0
Additional Utility 02	0	0	0	0
Additional Utility 03	0	0	0	0

## Plan View:

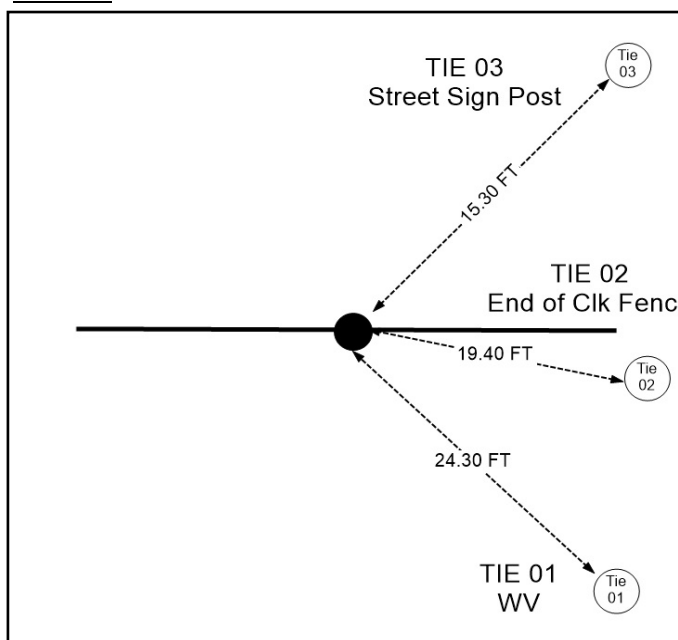
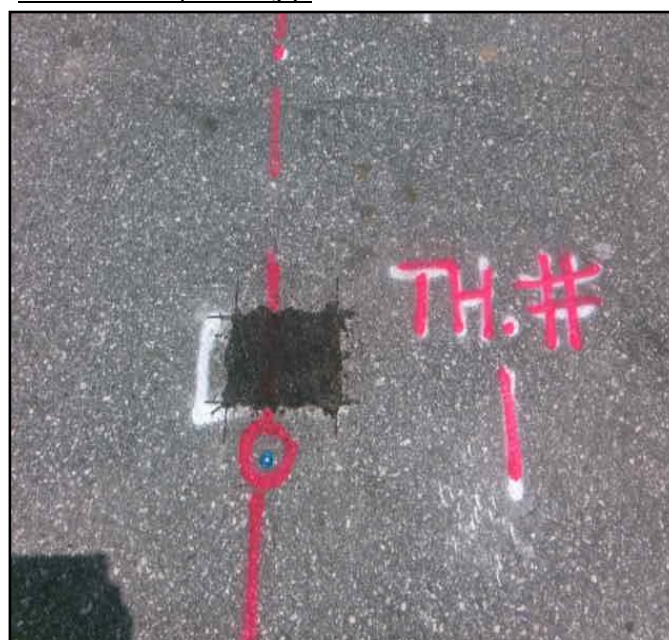


Image is not to scale

## TestHole Location (Main Image):



Southeastern Surveying and Mapping Corp.

# Subsurface Utility Engineering Test Hole Report



Test Hole: 01

Produced For: J. COLLINS ENGINEERING ASSOCIATES, LLC.

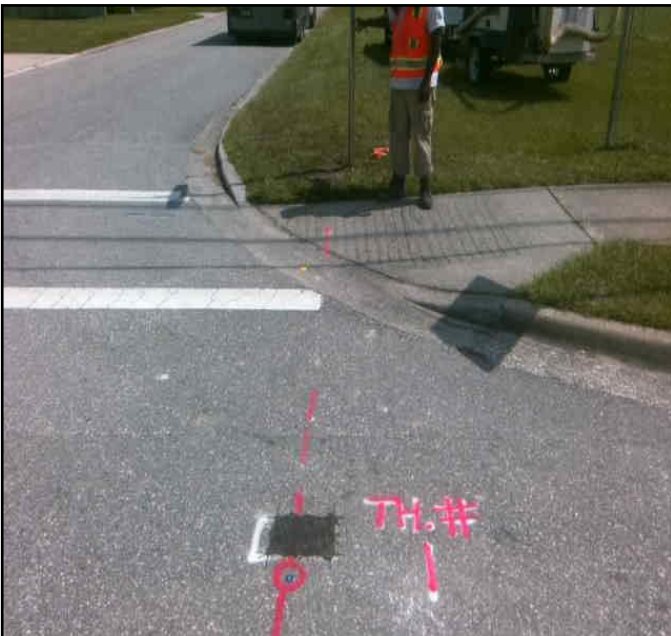
Tie 01 (From Test Hole): WATER VALVE



Tie 02 (From Test Hole): END OF CLK FENCE



Tie 03 (From Test Hole): STREET SIGN POST



# Subsurface Utility Engineering Test Hole Report



Test Hole: 02

Produced For: J. COLLINS ENGINEERING ASSOCIATES, LLC.

## Site Data

Project Name: JEA - JAMMES RD - WILSON BLVD. TO HARLOW BLVD. - WATER MAIN REPLACEMENT  
 Location: JAMMES RD @ HARLOW BLVD  
 Road Name: JAMMES RD Utility Owner: JEA  
 WO Number: W104320 Job Number: J062490 Task WO #: N/A City: JACKSONVILLE  
 Client Number: C08867 FPN #: N/A County: DUVAL  
 Station: Offset:  
 Collection Date: 9/30/2019 PM: RWG Ground Cover: ASPHALT Utility Chief: JUBA  
 Weather: CLEAR Soil Type: DIRT Utility Crew: JUBA  
 Time: N/A Soil Condition: HARD-WET Crew Number: 1

## Requested Utility Info

Utility Type: WATER Utility Material: AC-ASBESTOS CONCRETE Size (OD): 8.5 X 8.5  
 Utility Condition: GOOD Testhole Marker: NAIL AND DISK Height (in): 8.5 Width (in): 8.5  
 Top of Pipe: 3.2  
 Utility Note:

## Profile View:

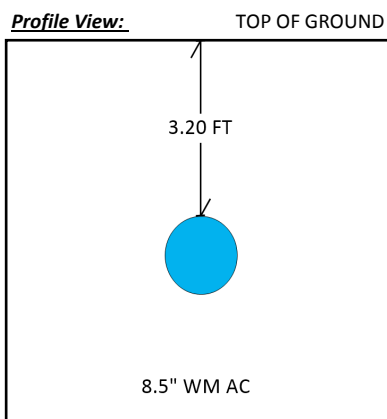


Image is not to scale

Tie	Description	Distance (Ft)	Distance (m)
01	SCHOOL ZONE SIGN	17.1	5.212
02	WOOD POWER POLE	10	3.048
03	MAST ARM	15.65	4.77

Additional Lines Found	Top of Pipe (ft)	Bottom of Pipe (ft)	Height (in)	Width (in)
Additional Utility 01	0	0	0	0
Additional Utility 02	0	0	0	0
Additional Utility 03	0	0	0	0

## Plan View:

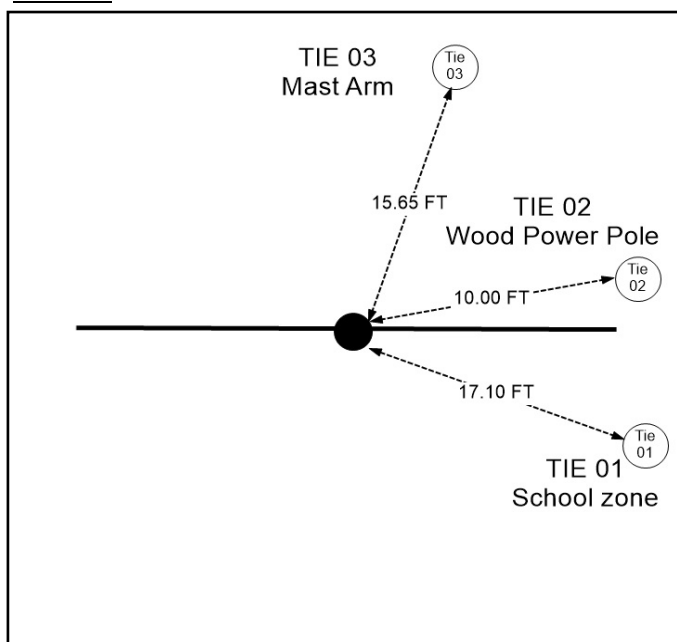


Image is not to scale

## TestHole Location (Main Image):



Southeastern Surveying and Mapping Corp.



# Subsurface Utility Engineering Test Hole Report



Test Hole: 02

Produced For: J. COLLINS ENGINEERING ASSOCIATES, LLC.

Tie 01 (From Test Hole): SCHOOL ZONE SIGN



Tie 02 (From Test Hole): WOOD POWER POLE



Tie 03 (From Test Hole): MAST ARM



# Subsurface Utility Engineering Test Hole Report



Test Hole: 03

Produced For: J. COLLINS ENGINEERING ASSOCIATES, LLC.

## Site Data

Project Name: JEA - JAMMES RD - WILSON BLVD. TO HARLOW BLVD. - WATER MAIN REPLACEMENT  
 Location: JAMMES RD @ BARHOLF AVE.  
 Road Name: JAMMES RD Utility Owner: JEA  
 WO Number: W104320 Job Number: J062490 Task WO #: N/A City: JACKSONVILLE  
 Client Number: C08867 FPN #: N/A County: DUVAL  
 Station: Offset:  
 Collection Date: 9/30/2019 PM: RWG Ground Cover: ASPHALT Utility Chief: JUBA  
 Weather: CLEAR Soil Type: DIRT Utility Crew: JUBA  
 Time: N/A Soil Condition: HARD-WET Crew Number: 1

## Requested Utility Info

Utility Type: WATER Utility Material: GALVINIZED Size (OD): 2.5 X 2.5  
 Utility Condition: FAIR Testhole Marker: NAIL AND DISK Height (in): 2.5 Width (in): 2.5  
 Top of Pipe: 4.55  
 Utility Note:

## Profile View:

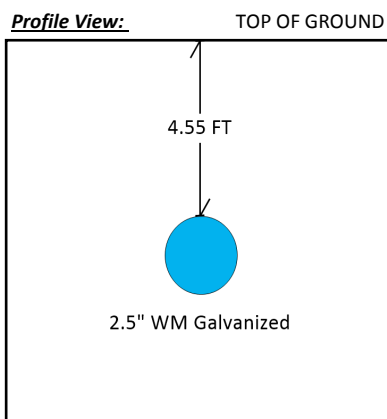


Image is not to scale

Tie	Description	Distance (Ft)	Distance (m)
01	JEA MANHOLE	41.75	12.725
02	STOP SIGN	19.9	6.066
03	WITNESS MARKER	38	11.582

Additional Lines Found	Top of Pipe (ft)	Bottom of Pipe (ft)	Height (in)	Width (in)
Additional Utility 01	0	0	0	0
Additional Utility 02	0	0	0	0
Additional Utility 03	0	0	0	0

## Plan View:

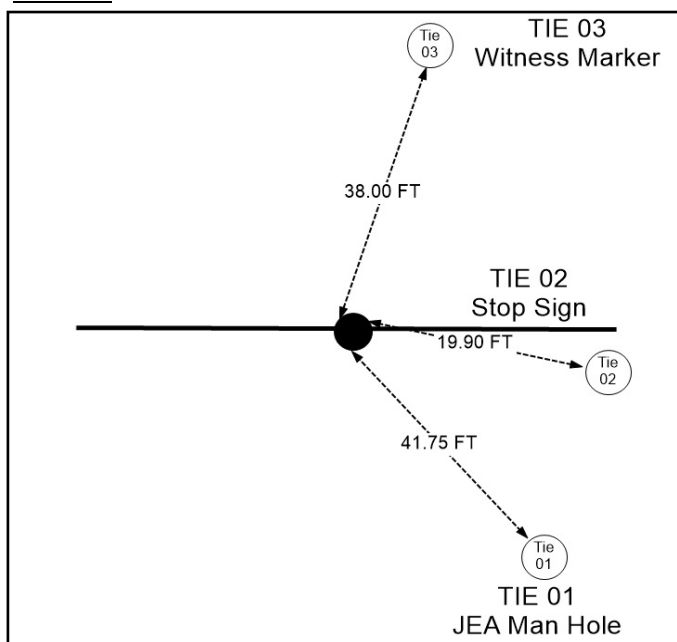


Image is not to scale

## TestHole Location (Main Image):



Southeastern Surveying and Mapping Corp.

# Subsurface Utility Engineering Test Hole Report



Test Hole: 03

Produced For: J. COLLINS ENGINEERING ASSOCIATES, LLC.

Tie 01 (From Test Hole): JEA MANHOLE



Tie 02 (From Test Hole): STOP SIGN



Tie 03 (From Test Hole): WITNESS MARKER





# Subsurface Utility Engineering Test Hole Report



Test Hole: 04

Produced For: J. COLLINS ENGINEERING ASSOCIATES, LLC.

## Site Data

Project Name: JEA - JAMMES RD - WILSON BLVD. TO HARLOW BLVD. - WATER MAIN REPLACEMENT  
 Location: JAMMES RD R/W @ EASEMENT Sta. 45+68.99, 13.36 RT  
 Road Name: JAMMES RD Utility Owner: TECO  
 WO Number: W104320 Job Number: J062490 Task WO #: N/A City: JACKSONVILLE  
 Client Number: C08867 FPN #: N/A County: DUVAL  
 Station: Offset:  
 Collection Date: 9/30/2019 PM: RWG Ground Cover: ASPHALT Utility Chief: JUBA  
 Weather: CLEAR Soil Type: DIRT Utility Crew: JUBA  
 Time: N/A Soil Condition: HARD-WET Crew Number: 1

## Requested Utility Info

Utility Type: GAS Utility Material: STEEL Size (OD): 1.5 X 1.5  
 Utility Condition: GOOD Testhole Marker: NAIL AND DISK Height (in): 1.5 Width (in): 1.5  
 Top of Pipe: 2.6  
 Utility Note: OWNERS MARKS SHOW 3/4 LINE. MOST LIKELY INTERIOR DIAMETER

## Profile View:

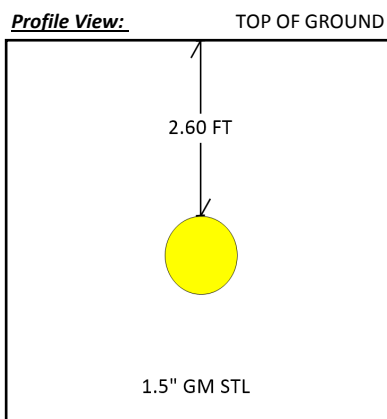


Image is not to scale

Tie	Description	Distance (Ft)	Distance (m)
01	EP	5.1	1.554
02	STORM MANHOLE	18.95	5.776
03	WOOD POWER POLE	37.6	11.461

Additional Lines Found	Top of Pipe (ft)	Bottom of Pipe (ft)	Height (in)	Width (in)
Additional Utility 01	0	0	0	0
Additional Utility 02	0	0	0	0
Additional Utility 03	0	0	0	0

## Plan View:

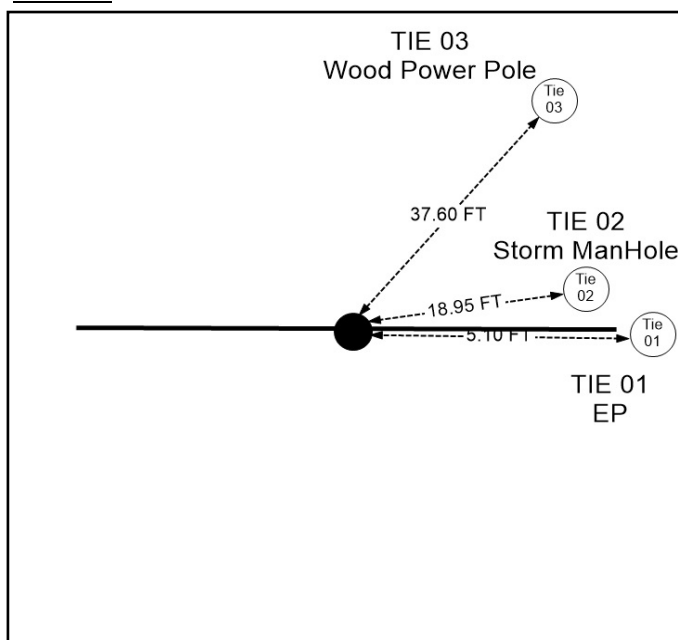


Image is not to scale

## TestHole Location (Main Image):



Southeastern Surveying and Mapping Corp.

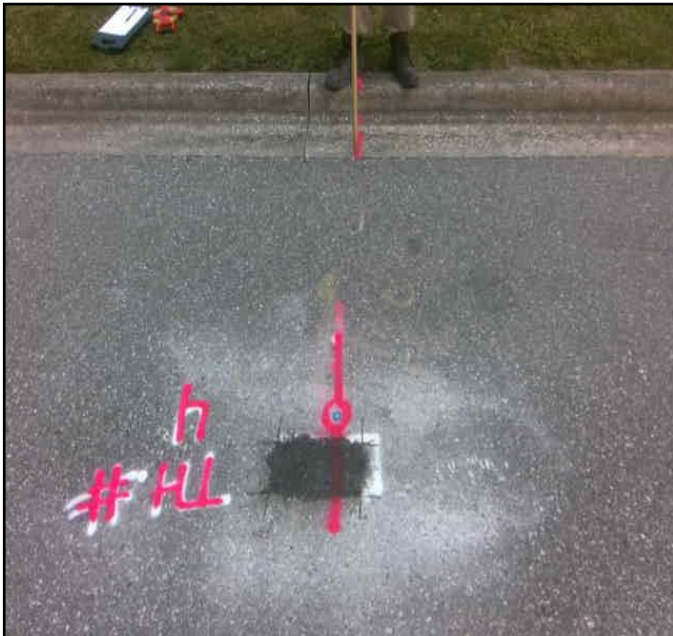
# Subsurface Utility Engineering Test Hole Report



Test Hole: 04

Produced For: J. COLLINS ENGINEERING ASSOCIATES, LLC.

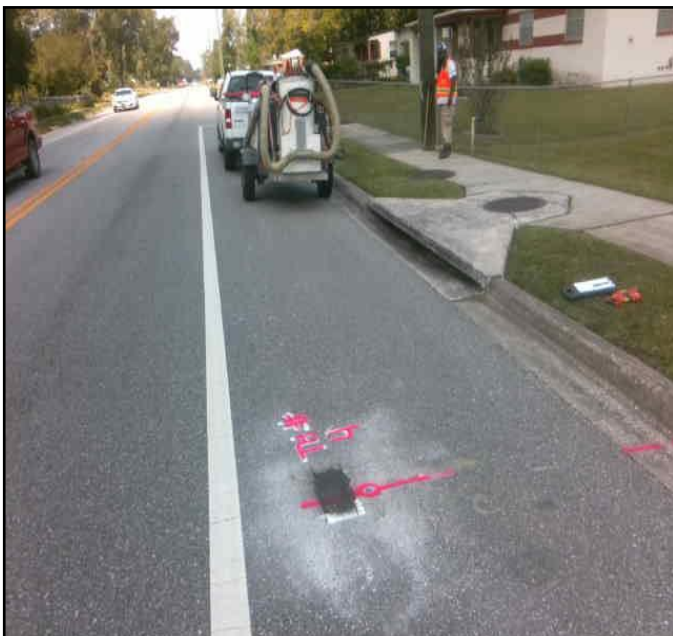
Tie 01 (From Test Hole): EP



Tie 02 (From Test Hole): STORM MANHOLE



Tie 03 (From Test Hole): WOOD POWER POLE





# Subsurface Utility Engineering Test Hole Report



Test Hole: 05

Produced For: J. COLLINS ENGINEERING ASSOCIATES, LLC.

## Site Data

Project Name: JEA - JAMMES RD - WILSON BLVD. TO HARLOW BLVD. - WATER MAIN REPLACEMENT  
Location: JAMMES RD @ BONDY PLACE  
Road Name: JAMMES RD Utility Owner: JEA  
WO Number: W104320 Job Number: J062490 Task WO #: N/A City: JACKSONVILLE  
Client Number: C08867 FPN #: N/A County: DUVAL  
Station: Offset:  
Collection Date: 9/30/2019 PM: RWG Ground Cover: ASPHALT Utility Chief: JUBA  
Weather: CLEAR Soil Type: DIRT Utility Crew: JUBA  
Time: N/A Soil Condition: HARD-WET Crew Number: 1

## Requested Utility Info

Utility Type: WATER Utility Material: GALVINIZED Size (OD): 2.5 X 2.5  
Utility Condition: FAIR Testhole Marker: NAIL AND DISK Height (in): 2.5 Width (in): 2.5  
Top of Pipe: 4.5  
Utility Note:

## Profile View:

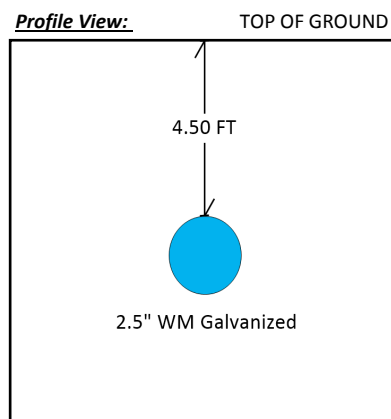


Image is not to scale

Tie	Description	Distance (Ft)	Distance (m)
01	WATER VALVE	24.1	7.346
02	STORM MANHOLE	30.35	9.251
03	STOP SIGN	38.8	11.826

Additional Lines Found	Top of Pipe (ft)	Bottom of Pipe (ft)	Height (in)	Width (in)
Additional Utility 01	0	0	0	0
Additional Utility 02	0	0	0	0
Additional Utility 03	0	0	0	0

## Plan View:

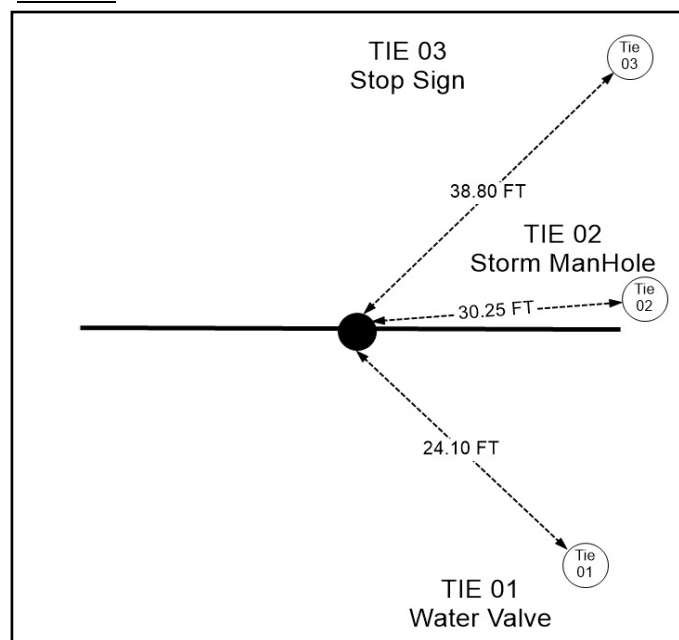


Image is not to scale

## TestHole Location (Main Image):



Southeastern Surveying and Mapping Corp.

# Subsurface Utility Engineering Test Hole Report



Test Hole: 05

Produced For: J. COLLINS ENGINEERING ASSOCIATES, LLC.

Tie 01 (From Test Hole): WATER VALVE



Tie 02 (From Test Hole): STORM MANHOLE



Tie 03 (From Test Hole): STOP SIGN



# Subsurface Utility Engineering Test Hole Report



Test Hole: 06

Produced For: J. COLLINS ENGINEERING ASSOCIATES, LLC.

## Site Data

Project Name: JEA - JAMMES RD - WILSON BLVD. TO HARLOW BLVD. - WATER MAIN REPLACEMENT  
 Location: JAMMES RD @ BALLEJO CT N  
 Road Name: JAMMES RD Utility Owner: JEA  
 WO Number: W104320 Job Number: J062490 Task WO #: N/A City: JACKSONVILLE  
 Client Number: C08867 FPN #: N/A County: DUVAL  
 Station: Offset:  
 Collection Date: 9/30/2019 PM: RWG Ground Cover: ASPHALT Utility Chief: JUBA  
 Weather: CLEAR Soil Type: DIRT Utility Crew: JUBA CAJA  
 Time: N/A Soil Condition: HARD-WET Crew Number: 2

## Requested Utility Info

Utility Type: WATER Utility Material: AC-ASBESTOS CONCRETE Size (OD): 4.5 X 4.5  
 Utility Condition: GOOD Testhole Marker: NAIL AND DISK Height (in): 4.5 Width (in): 4.5  
 Top of Pipe: 4.8  
 Utility Note:

## Profile View:

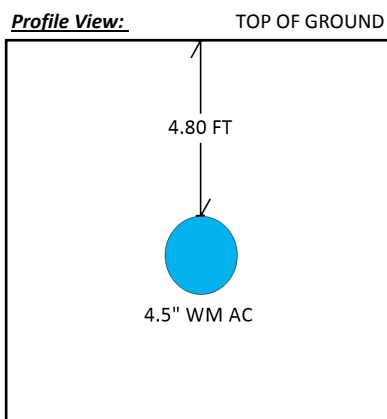


Image is not to scale

Tie	Description	Distance (Ft)	Distance (m)
01	EP	5.85	1.783
02	MAILBOX	11.5	3.505
03	JEAS MANHOLE	38	11.582

Additional Lines Found	Top of Pipe (ft)	Bottom of Pipe (ft)	Height (in)	Width (in)
Additional Utility 01	0	0	0	0
Additional Utility 02	0	0	0	0
Additional Utility 03	0	0	0	0

## Plan View:

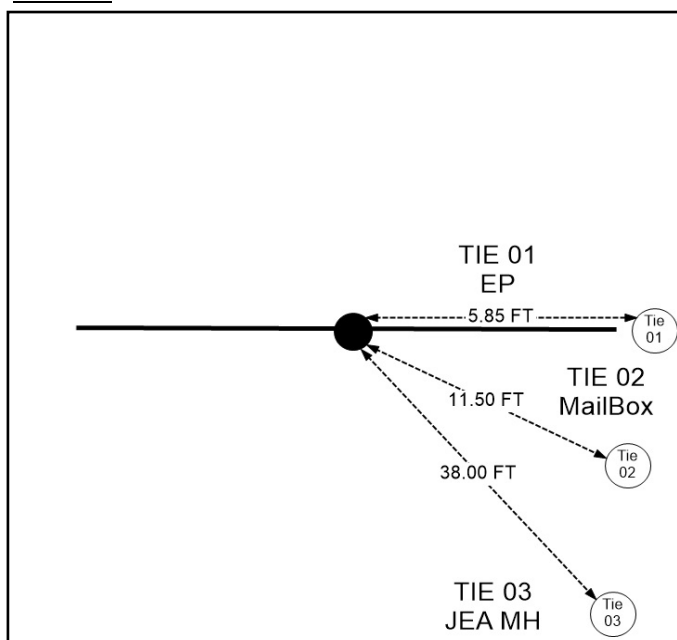


Image is not to scale

## TestHole Location (Main Image):



Southeastern Surveying and Mapping Corp.



# Subsurface Utility Engineering Test Hole Report



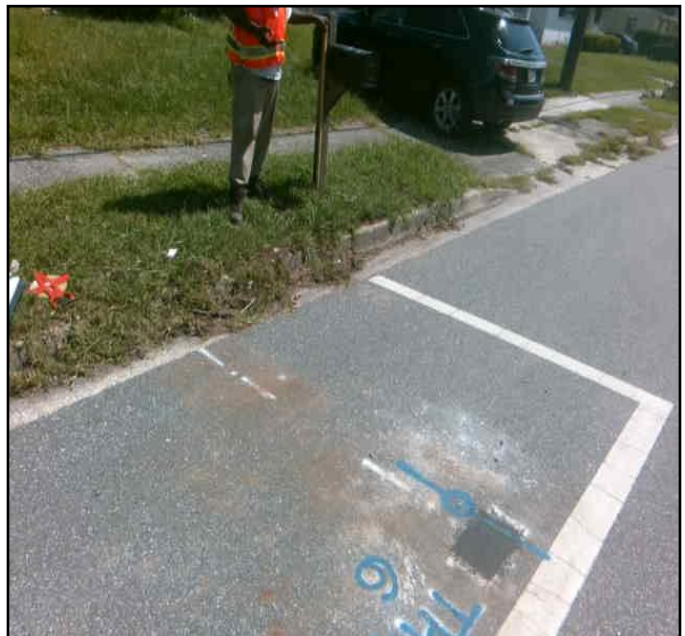
Test Hole: 06

Produced For: J. COLLINS ENGINEERING ASSOCIATES, LLC.

Tie 01 (From Test Hole): EP



Tie 02 (From Test Hole): MAILBOX



Tie 03 (From Test Hole): JEA MANHOLE



# Subsurface Utility Engineering Test Hole Report



Test Hole: 08

Produced For: J. COLLINS ENGINEERING ASSOCIATES, LLC.

## Site Data

Project Name: JEA - JAMMES RD - WILSON BLVD. TO HARLOW BLVD. - WATER MAIN REPLACEMENT  
 Location: JAMMES RD @ GRAVES ST  
 Road Name: JAMMES RD Utility Owner: JEA  
 WO Number: W104320 Job Number: J062490 Task WO #: N/A City: JACKSONVILLE  
 Client Number: C08867 FPN #: N/A County: DUVAL  
 Station: Offset:  
 Collection Date: 9/30/2019 PM: RWG Ground Cover: ASPHALT Utility Chief: JUBA  
 Weather: CLEAR Soil Type: DIRT Utility Crew: JUBA  
 Time: N/A Soil Condition: HARD-WET Crew Number: 1

## Requested Utility Info

Utility Type: WATER Utility Material: GALVINIZED Size (OD): 2.5 X 2.5  
 Utility Condition: FAIR Testhole Marker: NAIL AND DISK Height (in): 2.5 Width (in): 2.5  
 Top of Pipe: 2.9  
 Utility Note:

## Profile View:

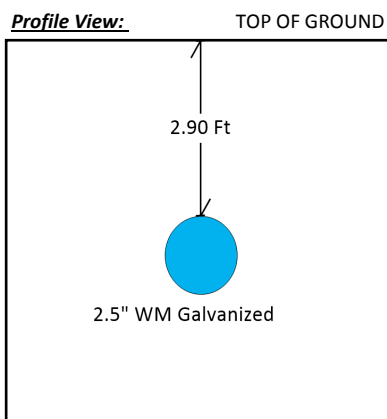


Image is not to scale

Tie	Description	Distance (Ft)	Distance (m)
01	END SCHOOL ZONE	14.5	4.42
02	WOOD POWER POLE	16.1	4.907
03	STOP SIGN	9.35	2.85

Additional Lines Found	Top of Pipe (ft)	Bottom of Pipe (ft)	Height (in)	Width (in)
Additional Utility 01	0	0	0	0
Additional Utility 02	0	0	0	0
Additional Utility 03	0	0	0	0

## Plan View:

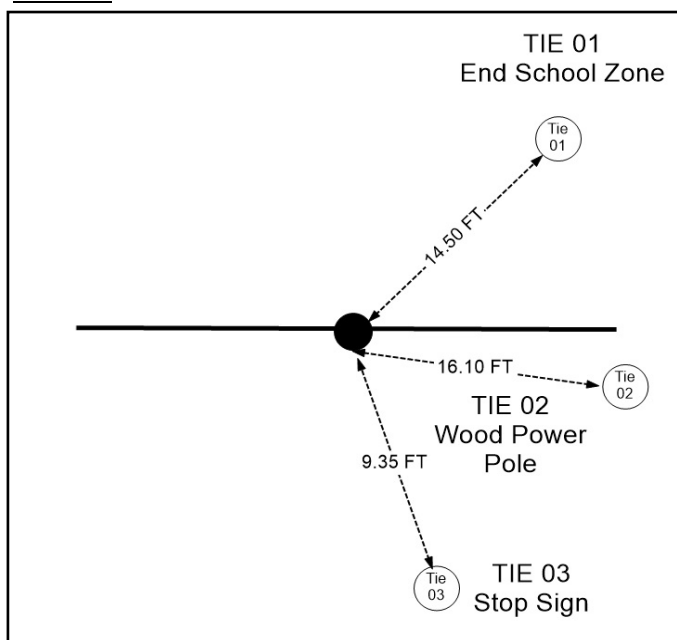


Image is not to scale

## TestHole Location (Main Image):



Southeastern Surveying and Mapping Corp.

# Subsurface Utility Engineering Test Hole Report



Test Hole: 08

Produced For: J. COLLINS ENGINEERING ASSOCIATES, LLC.

Tie 01 (From Test Hole): END SCHOOL ZONE



Tie 02 (From Test Hole): WOOD POWER POLE



Tie 03 (From Test Hole): STOP SIGN





# Subsurface Utility Engineering Test Hole Report



Test Hole: 09

Produced For: J. COLLINS ENGINEERING ASSOCIATES, LLC.

## Site Data

Project Name: JEA - JAMMES RD - WILSON BLVD. TO HARLOW BLVD. - WATER MAIN REPLACEMENT

Location: JAMMES RD SIDEWALK Sta. 49+31.79, 26.57 RT

Road Name: JAMMES RD Utility Owner: JEA

WO Number: W104320 Job Number: J062490 Task WO #: N/A City: JACKSONVILLE

Client Number: C08867 FPN #: N/A County: DUVAL

Station: Offset:

Collection Date: 9/30/2019 PM: RWG Ground Cover: CONCRETE Utility Chief: JUBA

Weather: CLEAR Soil Type: DIRT Utility Crew: JUBA,CAJA

Time: N/A Soil Condition: SOFT-WET Crew Number: 2

## Requested Utility Info

Utility Type: WATER Utility Material: GALVINIZED Size (OD): 2.5 X 2.5

Utility Condition: POOR Testhole Marker: NAIL AND DISK Height (in): 2.5 Width (in): 2.5

Top of Pipe: 3.05

Utility Note:

## Profile View:

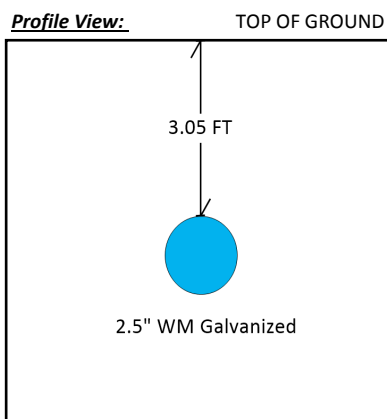


Image is not to scale

Tie	Description	Distance (Ft)	Distance (m)
01	FRONT OF WALK	2	0.61
02	BACK OF WALK	3.1	0.945
03	WATER VALVE	14.4	4.389

Additional Lines Found	Top of Pipe (ft)	Bottom of Pipe (ft)	Height (in)	Width (in)
Additional Utility 01	0	0	0	0
Additional Utility 02	0	0	0	0
Additional Utility 03	0	0	0	0

## Plan View:

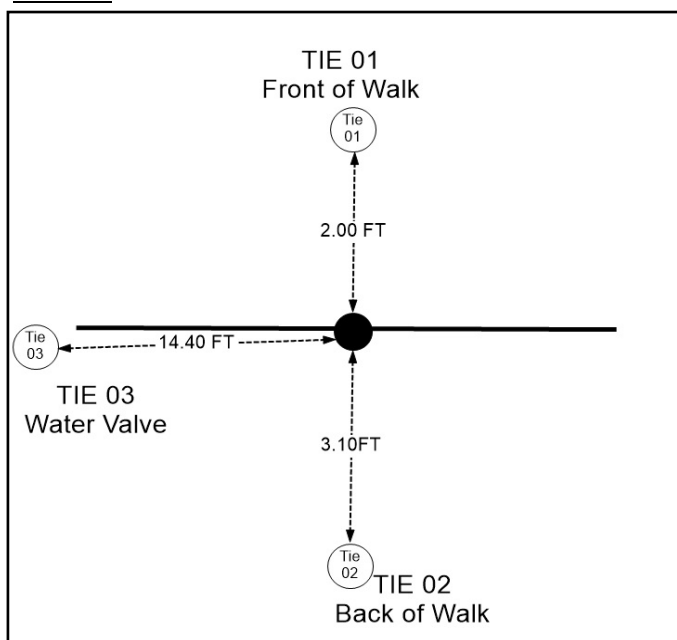


Image is not to scale

## TestHole Location (Main Image):



Southeastern Surveying and Mapping Corp.

# Subsurface Utility Engineering Test Hole Report



Test Hole: 09

Produced For: J. COLLINS ENGINEERING ASSOCIATES, LLC.

Tie 01 (From Test Hole): FRONT OF WALK



Tie 02 (From Test Hole): BACK OF WALK



Tie 03 (From Test Hole): WATER VALVE



# Subsurface Utility Engineering Test Hole Report



Test Hole: 10

Produced For: J. COLLINS ENGINEERING ASSOCIATES, LLC.

## Site Data

Project Name: JEA - JAMMES RD - WILSON BLVD. TO HARLOW BLVD. - WATER MAIN REPLACEMENT  
 Location: JAMMES RD @ BALLEJO CT S  
 Road Name: JAMMES RD Utility Owner: JEA  
 WO Number: W104320 Job Number: J062490 Task WO #: N/A City: JACKSONVILLE  
 Client Number: C08867 FPN #: N/A County: DUVAL  
 Station: Offset:  
 Collection Date: 9/30/2019 PM: RWG Ground Cover: ASPHALT Utility Chief: JUBA  
 Weather: CLEAR Soil Type: DIRT Utility Crew: JUBA CAJA  
 Time: N/A Soil Condition: HARD-WET Crew Number: 2

## Requested Utility Info

Utility Type: SANITARY FM Utility Material: HDPE-HIGH DENSITY POLYETHYLENE Size (OD): 0 X 0  
 Utility Condition: OTHER Testhole Marker: NAIL AND DISK Height (in): 0 Width (in): 0  
 Top of Pipe: 0  
 Utility Note: COULD NOT MAKE CONTACT WITH UTILITY. TEST HOLE WAS FILLING UP WITH WATER, CAUSING POTENTIAL PATCH ISSUES. LANCED TO 10FT. EQUIPMENT SHOWS LINE IS 12FT+.

## Profile View:

TOP OF GROUND

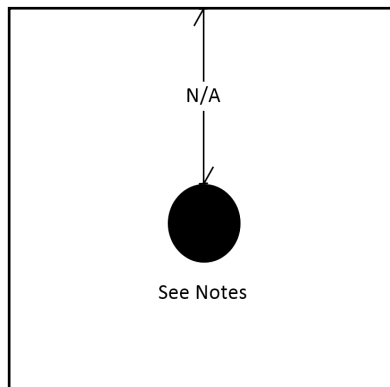


Image is not to scale

Tie	Description	Distance (Ft)	Distance (m)
01	STORM MANHOLE 1	20.1	6.126
02	STOP SIGN	11.45	3.49
03	STORM MANHOLE 2	33.3	10.15

Additional Lines Found	Top of Pipe (ft)	Bottom of Pipe (ft)	Height (in)	Width (in)
Additional Utility 01	0	0	0	0
Additional Utility 02	0	0	0	0
Additional Utility 03	0	0	0	0

## Plan View:

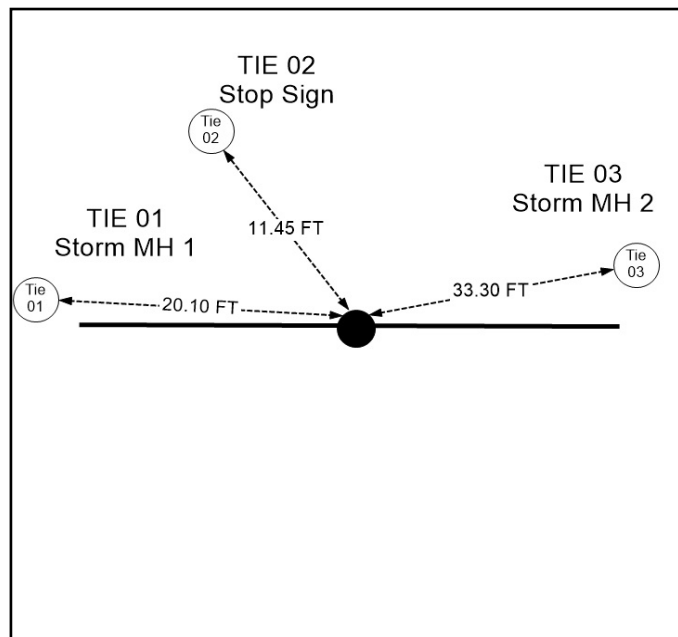


Image is not to scale

## TestHole Location (Main Image):



Southeastern Surveying and Mapping Corp.



# Subsurface Utility Engineering Test Hole Report



Test Hole: 10

Produced For: J. COLLINS ENGINEERING ASSOCIATES, LLC.

Tie 01 (From Test Hole): STORM MANHOLE 1



Tie 02 (From Test Hole): STOP SIGN



Tie 03 (From Test Hole): STORM MANHOLE 2



# Subsurface Utility Engineering Test Hole Report



Test Hole: 11

Produced For: J. COLLINS ENGINEERING ASSOCIATES, LLC.

## Site Data

Project Name: JEA - JAMMES RD - WILSON BLVD. TO HARLOW BLVD. - WATER MAIN REPLACEMENT  
 Location: JAMMES RD @ BALLEJO CT N  
 Road Name: JAMMES RD Utility Owner: JEA  
 WO Number: W104320 Job Number: J062490 Task WO #: N/A City: JACKSONVILLE  
 Client Number: C08867 FPN #: N/A County: DUVAL  
 Station: Offset:  
 Collection Date: 9/30/2019 PM: RWG Ground Cover: DIRT Utility Chief: JUBA  
 Weather: CLEAR Soil Type: DIRT Utility Crew: JUBA CAJA  
 Time: N/A Soil Condition: HARD-WET Crew Number: 2

## Requested Utility Info

Utility Type: SANITARY FM Utility Material: HDPE-HIGH DENSITY POLYETHYLENE Size (OD): 0 X 0  
 Utility Condition: OTHER Testhole Marker: NAIL AND DISK Height (in): 0 Width (in): 0  
 Top of Pipe: 0  
 Utility Note: COULD NOT LOCATE UTILITY DUE TO HARD PAN BEING INPENETRABLE AT 8FT. EQUIPMENT IS SHOWING PIPE AT 11FT+

## Profile View:

TOP OF GROUND

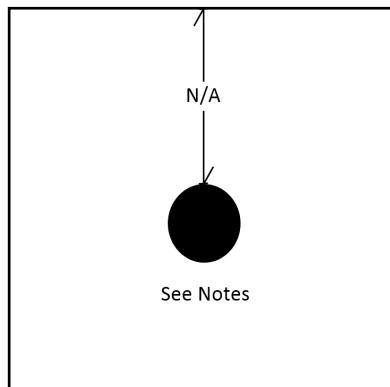


Image is not to scale

Tie	Description	Distance (ft)	Distance (m)
01	STOP SIGN	38	11.582
02	MAIL BOX	56.6	17.252
03	STORM MANHOLE	15.8	4.816

Additional Lines Found	Top of Pipe (ft)	Bottom of Pipe (ft)	Height (in)	Width (in)
Additional Utility 01	0	0	0	0
Additional Utility 02	0	0	0	0
Additional Utility 03	0	0	0	0

## Plan View:

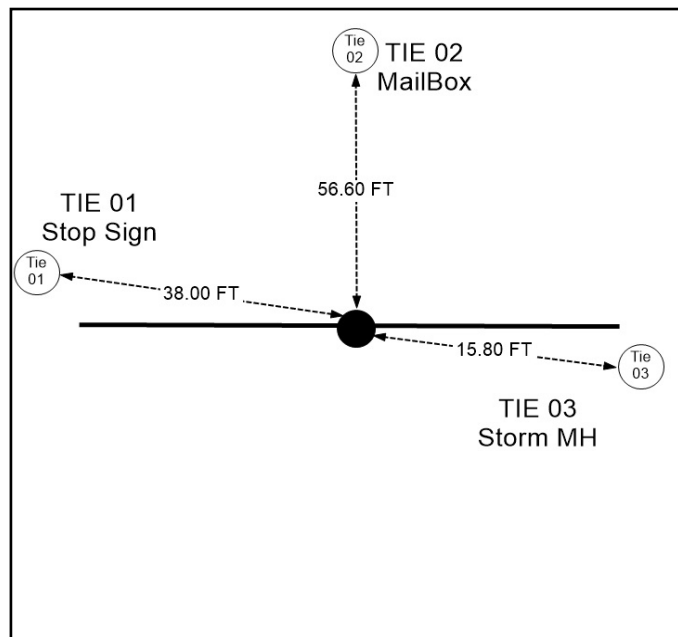


Image is not to scale

## TestHole Location (Main Image):



Southeastern Surveying and Mapping Corp.

# Subsurface Utility Engineering Test Hole Report



Test Hole: 11

Produced For: J. COLLINS ENGINEERING ASSOCIATES, LLC.

Tie 01 (From Test Hole): STOP SIGN



Tie 02 (From Test Hole): MAIL BOX



Tie 03 (From Test Hole): STORM MANHOLE

