

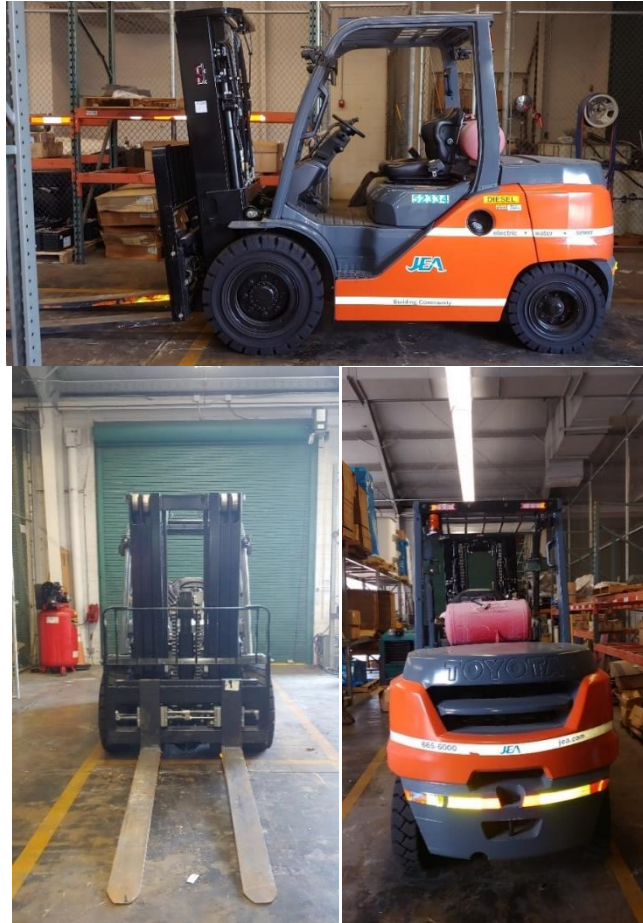
**SPECIFICATION, JEA CLASS 361D FOUR WHEEL SIT DOWN FORKLIFT, DIESEL
(10,000 LB CAPACITY)
UPDATED OCTOBER 2020**

1. SCOPE

It is the intent of the JEA to purchase multiple 10,000 LB CAPACITY 4 WHEEL SIT DOWN DIESEL FORKLIFTS. Units must be tested and delivered to the JEA Fleet Facility (5717 New Kings Road Jacksonville, Florida 32209) in complete operational condition, with all required equipment and documentation by the date specified per awarded contract.

2. MODEL

New Current Model Year 10,000 LB CAPACITY 4 WHEEL SIT DOWN DIESEL FORKLIFT (Example: JEA Current Units, Toyota 8FD45U)



3. DIMENSIONS & WEIGHT (OPEN CAB WITH GUARD). RATED FOR CAPACITY AND APPLICATION

- 3.1 Curb Weight Including Battery/All Components In Stowed/Travel Position (No Load): Not to exceed 16,500 LBS
- 3.2 Overall Width In Stowed/Travel Position (No Load): Not to exceed 60"
- 3.3 Overall Length Including Forks, In Stowed/Travel Position (No Load): Not to exceed 208"
- 3.4 Overall Height In Stowed/Travel Position (No Load): Not to exceed 95"
- 3.5 Under Clearance: Between 4" and 7"
- 3.6 Load Lifting/Carrying Capacity: Between 9000 lbs and 10,000 lbs

SPECIFICATION, JEA CLASS 361D FOUR WHEEL SIT DOWN FORKLIFT, DIESEL
(10,000 LB CAPACITY)
UPDATED OCTOBER 2020

4. ENGINE (Diesel)

- 4.1 Horsepower: Between 70 HP and 85 HP
- 4.2 Torque: Between 200 FT-LB and 240 FT-LB

5. TRANSMISSION

- 5.1 Automatic 2 Speed

6. AXLES

- 6.1 Front Drive Axle
- 6.2 Rear Steer Axle

7. TIRES (SOLID PNEUMATIC)

- 7.1 Tires: Sized and rated for machine capacity and application, aggressive terrain tread

8. ELECTRICAL SYSTEM / BATTERY

- 8.1 12 VOLT System
- 8.2 Battery: Rated for capacity and application

9. TRAVEL SPEED & GRADABILITY

- 9.1 Travel Speeds
 - Forward Speed Unloaded: Minimum 12 MPH
 - Forward Speed Loaded: Minimum 12 MPH
 - Reverse Speed Unloaded: Minimum 12.5 MPH
 - Reverse Speed Loaded: Minimum 12 MPH
- 9.2 Gradability with Full Load: Minimum 28%

10. CONTROLS

- 10.1 Lever and Joystick Cab Controls Acceptable: Must be ergonomic and readily accessible from the operator seat. Must be able to feather / vary the speed of all hydraulic fork and carriage functions.

11. CARRIAGE, MAST, BACKREST & FORKS

- 11.1 Carriage: Between 52" and 59" rated for capacity and application
 - Hydraulic actuated fork-positioning carriage (Left and Right)
 - 4 Position Hydraulic Valve with hydraulic actuated side shifting fork positioner (Retract Inward and Extend Outward)
- 11.2 Mast: 3 stage
 - Maximum Fork Height: Between 185" and 193"
 - Lowered Height: Between 87" and 93"

**SPECIFICATION, JEA CLASS 361D FOUR WHEEL SIT DOWN FORKLIFT, DIESEL
(10,000 LB CAPACITY)
UPDATED OCTOBER 2020**

- Free Lift: Between 41" and 44"
- Tilt: Minimum 8 degrees backward and 6 degrees forward
- Auto Fork Level Function
- Lift Speed: Minimum 95 FPM

11.3 Back Rest: Between 45" and 48" designed for capacity and application

11.4 Forks: 72" rated for capacity and application. Must be painted/coated in bright red

12. ADDITIONAL REQUIRED EQUIPMENT / OPTIONS

NOTE: If not furnished as standard equipment/options, the following items shall be furnished, installed and included in the bid price.

12.1 Digital Display, Operator Console: Must include diagnostic codes, service due reminder/warning, hydraulic temperature/fluid level, battery charging indicator etc.

12.2 LED Work Light Package: 2 front mounted and 1 rear mounted with guards on upper corners of cab

12.3 LED Tail Lights: Running lights and brake lights

12.4 LED Strobe Light: Mount to overhead guard

12.5 OSHA Certified Overhead Guard

12.6 Full Adjustable Suspension Seat and Seatbelt

12.7 Removable Transparent Overhead Guard Cover

12.8 Reverse Travel Alarm

12.9 Power Steering and Adjustable Tilt Steering Wheel

12.10 Operator Seat Sensor: Forklift will not function without operator sitting in the seat

12.11 Parking Brake

12.12 Overload Alarm/Warning

12.13 Removable Rubber Floor Matt

12.14 Dual Rearview Mirrors

12.15 Cup Holder: Dash mounted

12.16 Stability Control System: Must meet all ANSI and other regulation standards to include rear axle stability.

12.17 Programmable Speed Limiter

12.18 Load Display

12.19 Grab handle with horn button mounted to right, rear, upright of the overhead guard

SPECIFICATION, JEA CLASS 361D FOUR WHEEL SIT DOWN FORKLIFT, DIESEL
(10,000 LB CAPACITY)
UPDATED OCTOBER 2020

13. MANUALS, VIDEOS, KEYS & OPERATOR ORIENTATION

- 13.1 One (1) set of operator manuals per unit (hard copy). (1) Electronic Copy maintenance, repair & parts manuals
- 13.2 Provide three (3) complete sets of keys per unit including attachments, bins and tool boxes. Key bins and tool boxes alike. Stamp/Engrave JEA provided 5 Digit Unit Number on all keys. If not able to stamp keys, provide a brass key tag
- 13.3 One (1) on-site JEA Operator Orientation Training
- 13.4 One (1) on-site JEA Maintenance Orientation Training

14. PARTS AVAILABILITY AND VENDOR SUPPORT

- 14.1 Oil Filters, Hydraulic Filters, Hydraulic Lines, Tires, Sprockets, Pins, Rollers Etc. must be readily available within 48 hours
- 14.2 Awarded Vendor must have a Facility located in the JEA Service Area. The vendor must be certified to perform Preventive maintenance, repairs and warranty repairs on the equipment

15. COLOR/GRAPHICS

- 15.1 Manufacturer's standard color. Forks must be painted bright red.
- 15.2 Delete all vendor and manufacturer identification decals except required safety & reference identification tags, decals, data plates & placards.

16. WARRANTY

- 16.1 Two (2) Year Unlimited Hours Full Machine Warranty including Parts, Travel Time, Transport and Mileage. Must include and list all standard manufacturer's warranties. Include and list all Standard Component Warranties.
- 16.2 Warranty period starts when units are received at JEA's fleet facility and are inspected and accepted

17. OTHER JEA REQUIREMENTS

- 17.1 Install JEA provided decals
- 17.2 Current Service Inspection with decal installed lower left outside corner of unit. Include current date, current hours, next service due date and next service due hours.
- 17.3 Include a paper copy specification / build sheet in all units including key codes
- 17.4 Must include/document the VIN number/serial number, make, model, description, JEA PO # and JEA provided 5 digit unit # on all invoices
- 17.5 Awarded vendor must complete and submit the JEA provided Vehicle and Equipment Attribute Data Spreadsheet

NOTE: All units, attachments, products and services must meet and comply with all applicable regulations and specifications including but not limited to Federal and State Laws, OSHA Regulations, ANSI Standards, DOT Regulations and ASTM Standards. All units must be delivered to the JEA Fleet Facility with a minimum ¾ tank of fuel if applicable. Contact Thurman McGlothlin at 904-576-9382 48 hours prior to delivery. Delivery times are Monday through Friday 07:00 AM – 03:00 PM at 5717 New Kings Road Jacksonville Florida, 32209